



August 28th, 29th
and 30th, 1998

WISCONSIN'S
LESBIGAYTRANS PRIDE CELEBRATION

The Official Publication Of



HENRY W. MAIER
Milwaukee, WI

TM

FESTIVAL PARK
Wisconsin



GENERAL INFORMATION

PRIDEFEST HOURS

FRIDAY, AUG. 28

5 p.m. to Midnight
Opening ceremony at 7 p.m.

SATURDAY, AUG. 29

11 a.m. to Midnight

SUNDAY, AUG. 30

11 a.m. to 11 p.m.
Interfaith service at 10:30 a.m.

ADMISSION PRICES

\$5 at the gate

\$12 three-day pass

Children 12 and under free when accompanied by an adult.

Three-day passes will be for sale at the gate Friday night.

Advance ticket outlets for \$12 three-day passes are AfterWords Book Store, 2710 N. Murray Ave., Milwaukee and Designing Men, 1200 S. 1st St., Milwaukee; Za's in Green Bay. Advance tickets are also available by mail from Tickets, PrideFest, P.O. Box 93852, Milwaukee, WI 53203. Mail orders must be received by Aug. 15 to guarantee shipment.

FREE ADMISSION

Saturday and Sunday from 11 a.m. to 1:30 p.m. when you wear your black pre-festival PrideFest button. Buttons are available for \$2 each at AfterWords Book Store, 2710 N. Murray Ave., Milwaukee; Designing Men, 1200 S. 1st St., Milwaukee; and This Is It, 418 E. Wells St., Milwaukee.

All day, every day with your Pride Card, available through Proud Crowd sponsorship.

Friday from 5 to 9 p.m. and Saturday from 11 a.m. to 2 p.m. when you bring four or more non-perishable food items for local food pantries.

Sunday from 2 to 4 p.m. with your Milwaukee Journal Sentinel Press Card.

VISITOR INFORMATION

For more information, contact PrideFest at (414) 272-FEST or <www.pridefest.com>.

For hotel and special travel information contact the Greater Milwaukee Convention and Visitors Bureau at (800) 554-1448.

THE PARK EAST HOTEL

For five years the official hotel of PrideFest, the Park East Hotel, offers a special rate of \$72 plus tax for up to four people in a room when you mention PrideFest. Call (800) 328-7275 or (414) 276-8800 by Aug. 1. The Park East is in downtown Milwaukee less than a mile from PrideFest grounds and offers free parking. Shuttle bus service will be available between the hotel and PrideFest on Saturday and Sunday.

YOUR BEST ROUTE TO PRIDEFEST

Take I-94 east from Madison, I-43 south from Green Bay, or I-94 north from Chicago to the I-794 spur east in Milwaukee's downtown Marquette Interchange.

Exit right at Plankinton Avenue (Exit 1D) or exit left at Jackson Street (Exit 1E) or exit left at Lincoln Memorial Drive (Exit 1F).

Follow the green and white signs with red smiley faces to the Henry W. Maier Festival Park at the lakefront.

This year, be especially alert to highway construction on eastbound I-94 between Waukesha and downtown Milwaukee. At various times this summer, certain ramps onto eastbound I-94 will be closed, including the ramp in the Zoo Interchange from southbound Highway 45 to eastbound I-94.

For daily ramp schedule updates call the Highway Department hotline, (414) 548-5684. For statewide road conditions, visit <www.dot.state.wi.us> and for a live congestion map check <www.dot.state.wi.us/dtd/hdist2.cams.html>.

TABLE OF CONTENTS

GENERAL INFORMATION	3
ID Bracelets	3
Shuttle Buses	4
Welcome	5
Theme	6
SPONSORS: Damron, American Airlines	8
SPONSOR: ARCW	11
AIDS Walk	11
PrideFest Council	12 & 13
Organizations Can Make Money	14
Volunteers Welcome	14
PrideFest Awards	16 & 18
Fireworks	26
SPONSOR: Miller Brewing Company	26
SPONSOR: Challenging Party	28
PrideFest Wins HRL Award	28
Good Eats	30
PrideFest Souvenirs	30
Possum Queen	32
'70s Dance Party	32
SPONSOR: Westridge Labs/ID Lube	37
ENTERTAINMENT	
Joi Cardwell	38
Les Lokey	38
Men Out Loud	40
Sometimes Y	40
Mrs. Fun	42
Jillian Clark	42
Mystique	44
Jessica Halem	44
Mia Montenegro	46
Jack Sunday	46
Ronnie Nyles	46
Atahualpa	52
Ballet Wisconsin	52
Framing Army	52
Dorian Gray	54
Powerplay	54
Nuna	54
Robert Nugent Jones	54
Fweep	56
Side By Side	56
Tracey Rose	56
Teri Vann	58
Stardust	58
Uppity Women Stiltwalkers	58
SPONSOR: Q-Voice & In Step	60
SPONSOR: Cream City Foundation	60
More Stages, More Acts	64
Volleyball	64
SPONSOR: Milwaukee Journal/Sentinel	66
Children's Day	72
Hunger Task Force - Free Admission	72
Interfaith Service	72
Proud Crowd	78
PrideFest on the Web	80
Youth Activity Area	80
Take Your Vows - Commitment Ceremony	80
PrideFest Parade	85
Kudos	88
DIRECTORY	89-94
PrideFest Advance Ticket/Button Outlets	94

ID BRACELET

Get carded, stay carded

Many festivals and fairs have experienced a growing problem with underage drinkers. PrideFest, in its attempt to reduce the likelihood of this problem and to reduce the constant hassle of carding people of legal drinking age, is doing what many other special events are doing — ID bracelets.

Festival-goers who plan to drink need only show their ID once and have a bracelet snapped on their wrists. The bracelets, sponsored by ID Lube, will be available at the information area and all drink ticket booths. "ID Lube" banners will mark places where the bracelets are available.

Bracelets are required regardless of age and apparent wrinkles for anyone buying or consuming alcohol. Different colored bracelets will be provided each day of PrideFest. Patrons without a bracelet spotted with beer or wine by security personnel may be challenged to provide proof of age.

SHUTTLE BUSES ARE BACK

A free bus will carry people to and from the festival grounds from 11 a.m. to midnight Saturday and from 11 a.m. to 11 p.m. Sunday.

"Last year was a first try" for the shuttle, says Mike Hall, the festival's Operations Coordinator. This year there will be more attention to scheduling.

The bus will loop through the downtown and northern areas, stopping at the Park East Hotel and other businesses that agree to sponsor the bus. It will also loop through the southside bar district. Bus stops will be marked.

Publishers
1998 PrideFest Council & Havlicek & Associates
Writer
Sue Burke
Cover/Official Logo Design
Barb Peterson, Wild Child Design
1997 Festival Photos
Gary Hawkins, Douglas Krimmer
PrideFest Council Photo on page 12 by Photo Banks

©1998 PrideFest Council and Havlicek & Associates; all rights reserved. No portion of this publication may be reproduced in any manner without the expressed consent of the publishers. Publication of the name or photograph of any person, business or organization in articles or advertising is not to be construed as any indication of the sexual orientation of such person, business or organization. The 1998 PrideFest Council and Havlicek & Associates disclaim any responsibility for claims made by advertisers. The views expressed by contributors are not necessarily those of the 1998 PrideFest Council and/or Havlicek & Associates.

Welcome

The remarkable civil rights movement of the modern Lesbian, Gay, Bisexual and Transgender community – over 25 years of rebellion and reform, tragedy and triumph – has manifested itself as a series of Pride celebrations throughout the world. Where once there were political marches, there are now parades. Where there were roars from angry throngs, now there are roars from adulating audiences. Our rallies have become festivals where we gather and celebrate our history, culture, heroes and accomplishments.

But what is "Pride?" To those outside our community, Pride is "a reasonable or justifiable self-respect." While that is an accurate description of how many of us feel about ourselves, Pride has a much different meaning, and is easier to demonstrate than define.

Pride is the craning of the neck to see someone's Rainbow Flag hanging from the porch. It is the acknowledging nod and smile to a stranger wearing Freedom Rings. Pride is the speeding up in the car to wave at the driver who also has a rainbow sticker across the bumper. Pride means recognizing community in each other no matter where in the world we find ourselves.

Often people say that they wish PrideFest could last all year. They are not referring so much to the decorations, banners, music and crowds that make up a festival; they are referring to the feelings that come when one is allowed to be exactly who they are within a supportive, embracing and affirming gathering of people. True, the festival is just for three days, but Pride can be all year round.

We welcome all people who come through our gates who support, embrace and affirm each other as we gather to celebrate "Many Worlds, One Community."

DAMRON



travel guides for a whole world of queers

Now debuting Damron Amsterdam all-in-one gay tourist's city guide!

available for only \$9.95 at AfterWords, and other queer-friendly bookstores

Get our FREE catalog • (800) 462-6654 • <http://www.damron.com>



FOR TRAVELERS, THERE'S DAMRON

For over 30 years, the Damron Company has forged the way for lesbian and gay travelers. In addition, this year it has become a new PrideFest sponsor.

Even if you haven't used a Damron guide before, you've probably heard of the Damron Address Book or other Damron gay and lesbian travel guides published in the company's 34-year history as a gay-owned and run publisher. The San Francisco-based company publishes four titles annually, and recently added its first city guide — Damron Amsterdam.

The Damron Address Book, the original gay travel guide, is still the best-selling book of its kind in the country. Covering the U.S., Canada, Mexico, the Caribbean, and several major European cities with over 9,000 listings, "the Guide" (as it's affectionately known by almost 1 million readers) has been recognized by the New York Times, Out & About, the Advocate, and Out as the most comprehensive guide for gay travelers.

The Damron Women's Traveler, now in its ninth year, provides lesbian travelers with all the information they need to plan the perfect vacation. It includes an extensive Travel & Tours section listing local and national women's events, a comprehensive camping and RV park index, and city overviews that highlight women's businesses.

The Damron Road

Atlas covers major North American, Canadian, and European cities and pinpoints accommodations, bars, restaurants, and bookstores that welcome lesbians and gays. Its easy-to-read color maps and larger format make it a favorite with both business and vacation travelers.

Damron Accommodations sets a new standard for lesbian and gay guides. The premier edition, which appeared in 1995, charmed travelers and travel professionals alike with its stunning color photographs and clean, elegant design. The third edition will be available in early summer of 1998 and will include new listings for Europe and Australia, in addition to the U.S., Canada, Mexico, and the Caribbean.

Damron Amsterdam is designed to be the only guide a lesbian or gay traveler needs, stuffed with all the usual tourist information, in

addition to queer-specific listings. The book features detailed full-color and 2-color maps that show the exact locations of accommodations, museums, and lesbian/gay centers; bookstores, bars, and nightclubs; plus both gay and straight points-of-interest, tram lines, taxi stands, parks, and much more. All this in a portable 4" x 5" format at only \$9.95.

Guiding queers into the 21st century, Damron is determined to remain the "First Name and Last Word in Gay Travel" for decades to come. Damron can be contacted at (415) 255-0404, (800) 462-6654, <http://www.damron.com>.

AMERICAN AIRLINES New PrideFest Sponsor

American Airlines has become a new sponsor of PrideFest, and its involvement with the gay and lesbian community runs deep. It strives to make travel special and enjoyable for every traveler.

American Airlines' gay and lesbian marketing department, Rainbow TeAAm, is the first of its kind in the Fortune 100.

The airline is recognized as the first U.S. carrier to include gays and lesbians in employment non-discrimination guidelines.

Its gay and lesbian employees may designate discount passes to anyone, including their domestic partners.

American Airlines offers reduced bereavement fares for domestic partners, not only for legal spouses.

American Airlines Admirals Club members can purchase lower cost spousal membership for domestic partners of same-sex couples.

Its gay and lesbian employee group, GLEAM, is officially recognized by American's management and consults with management on issues critical to gay and lesbian employees.

American Airlines was one of the first mainstream members of the International Gay and Lesbian Travel Association (IGLTA) and helps support more non-profit gay and lesbian organizations than any other airline.

To learn more about American Airlines, visit its website at www.americanair.com, or contact the Rainbow TeAAm at 1-800-858-1466.



SPONSORS

PRIDEFEST AWARDS

Service, Spirit, and Leadership

Each year, PrideFest presents awards to individuals or organizations that have demonstrated leadership, community service, and notable achievements. This year's winners are Jan Uebelherr, Thomas Reed, and Mark Mariucci, Community Service Awards; the Kelly-Jones Family and Scott Gunkel, Stonewall Awards; and J. Robert Moore, Lifetime Achievement Award.

They will be invited to ride in Sunday's parade as honorary marshals, and will be presented with plaques at the Harley Davidson Stage after the parade, about 3:30 p.m. on Sunday, Aug. 30.

Community Service Award

The donation of time and energy to organizations is priceless. The community service award is presented to individuals or organizations who have made exemplary contributions to the community and its members.

JAN UEBELHERR is a journalist and assignment writer for the Milwaukee Journal Sentinel. Her coverage of PrideFest has been consistently fair and objective, which has resulted in a more positive image of the festival and the LGBT community overall. Jan has always contacted representatives of the LGBT community to get direct information. Her level of professionalism as a reporter and her desire to work directly with our community representatives has given the LGBT community a stronger voice in Milwaukee through the city's largest daily newspaper.

THOMAS REED, director of strategic planning and programs for Miller Brewing Co. and Philip Morris Management Corp., has been with the company for 15 years. Miller has been a leader in funding LGBT programs and in the fight against AIDS. Tom has testified on behalf of Miller in front of state legislatures in support of gay rights bills. Miller is the only alcoholic beverage company to do so.

Tom has helped local organizations such as Cream City Foundation, Saturday Softball League, Lesbian Alliance of Metro Milwaukee, the United of Madison, Holiday Invitational Tournament, and AIDS Resource Center of Wisconsin obtain corporate funding from Miller. Miller Brewing Company has been the largest and most loyal corporate sponsor of PrideFest, having provided \$55,000 since 1994, which was made possible through the doors Tom Reed opened for us.

MARK MARIUCCI is owner and publisher of Quest magazine and one of the founders of

Rainbow Over Wisconsin. He grew up and lived most of his life in the Green Bay-De Pere area. He has made a conscious decision to improve the quality of life for LGBT people in the Fox Valley area in an effort to keep people from moving to larger urban cities. His goal is to make it possible for LGBT people to live their lives within their hometowns, no matter how small, with a support network of friends and family, and with the acceptance of the community at large.

Mark was instrumental in the formation of Rainbow Over Wisconsin, a non-profit organization that hosts fund raising events, disbursing the money to other LGBT organizations in the Fox Valley area. As owner and publisher of Quest magazine, now in its fifth year, he has given a voice to the LGBT communities outside Milwaukee and Madison. He is also owner of ZA's in Green Bay, which hosts many fund-raising events and has been a contestant himself in the Guernsey contest, a fund-raising campaign similar to Milwaukee's Possum Queen.



Stonewall Award

This award goes to individuals or organizations who have demonstrated the spirit of the Stonewall Riots by fighting to bring about change for the benefit of others. Usually their fight begins as a personal crusade against an injustice, but often leads to a far-reaching impact for the good of the community.

SUNSHINE JONES, JOANN KELLY, and their daughter, **SOL**, of Madison, have been active participants in the quest for equal rights for gay and lesbian families with children. Sunshine and Joann were both instrumental in the founding of Madison's Lesbian Parents Network in 1989. This group continues to provide much needed support and advocacy to more than 150 Madison-area families. Sunshine was also instrumental in the founding of Gays, Lesbians, and Allies for Diversity in Education, a group working change in Madison's schools.

In the past year, Sunshine, Joann, and Sol offered testimony at four state legislative hearings on bills affecting LGBT family rights. Their most recent testimony was against AB 104, the same-sex marriage prohibition bill. Their testimony, given in Wausau, provided the legislators with specific insights into the joys and problems of two lesbians raising a family. Sunshine and Joann have been in what they describe as "a lesbian marriage relationship based on love, fidelity, commitment, and spiritual faith" for nineteen years. In 1987 Sol was born and both moms have shared the journey of parenting in all aspects of her life.

Their own activism and their support of Sol's involvement in LGBT family rights truly exemplifies the spirit of the Stonewall Award, designed to recognize those who fight to bring about change for the benefit of others.

SCOTT GUNKEL's energy and enthusiasm has touched many, many organizations including the Cream City Foundation, Human Rights League, Lambda Rights Network, Cream City Business Association, Community Election Coalition, American Civil Liberties Union-Milwaukee Chapter, Wisconsin Research Center, Sherman Park Rainbow Association, Milwaukee Lesbian and Gay Pride Committee, PrideFest, and ACT-UP.

Scott's dedication to the community goes beyond being a volunteer. He has committed himself to securing better lives for all LGBT people through his work for gay civil rights legislation and improved relations between elected officials and our community. Scott has consistently called for equal rights and justice for all people whether they are black, white, male, female, queer, or straight.

He has worked long and hard, and believes in a day when everyone will be able to share the same unalienable rights and privileges that were never meant to be special privileges, but inalienable rights of all people. The number of hours he has given to the community are countless; the benefits he has helped achieve for us are priceless.



PFLAG MILWAUKEE

P. O. Box 21853
Milwaukee, WI 53221-0853
(414) 299-9198

At present we live in a society where our loved ones are not accepted by certain segments of society due to myths, misconceptions, restrictive beliefs and fear of the "unknown." We want to put a loving singular "human face" to the generally negative landscape that is frequently portrayed of our loved ones.

PFLAG is a national, educational, family support and advocacy organization whose members, predominantly non-Gay, serve as role models for Gays/Lesbians/Bisexuals providing love and support

We **SUPPORT** families.

Lifetime Achievement Award

This is presented to an individual who has demonstrated ongoing leadership and commitment to the LGBT community. Individuals who have received this award in the past have been instrumental in changing the course of the community's history.



J. ROBERT MOORE's involvement in Milwaukee's LGBT community goes back more than 25 years. Shortly after arriving in Milwaukee in 1971, he quickly lent his energy to existing organizations. He served as

treasurer for the Gay People's Union, hosted the opening reception for the Cream City Business Association, served on the board of the Lambda Rights Network, and currently serves as the sports director for PrideFest, where he spends countless hours recruiting volleyball teams to participate in the tournament, sponsored by Miller Lite.

However, what significantly stands out in Bob's contributions to the community is the number of times he played a key role in the formation of new organizations or served in a leadership capacity. The list is impressive: organizer of the walking component of Frontrunners of Milwaukee; co-founder of the Public Officials' Reception Committee; co-founder of Cream City Squares; founder and officer of the Log Cabin Club of Wisconsin; founder, treasurer, president, and editor of Milwaukee's GAMMA; co-chair of the first national assembly in July, 1978, of Lutherans Concerned-Wisconsin. All these organizations are still going strong.

Bob's contribution to the missions of these very diverse organizations has had a direct impact on literally hundreds, if not thousands, of people, and has enhanced our community as a whole by providing LGBT people with the means to funnel their energies for various causes. We are fortunate that Bob's path led him to Milwaukee; our history is richer for it, and our future holds greater opportunities for LGBT people to be participants within our own community.



Tommy Baldwin

The 
Chanticleer
GUEST HOUSE

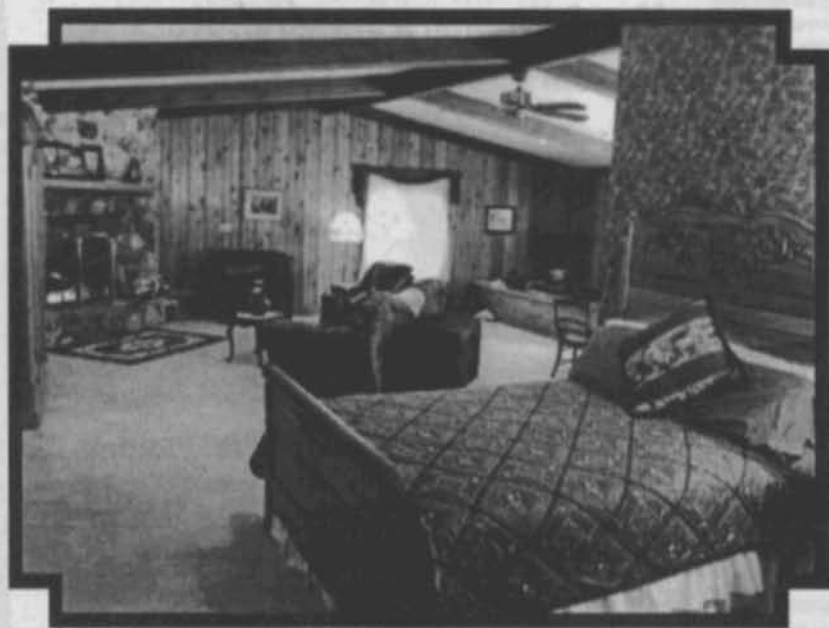
*Door County's
most luxurious
Bed & Breakfast
located on
30 private acres.*

The Chanticleer Guest House is a quaint, country bed & breakfast that includes a heated pool and hiking trails.

You may relax in your own private whirlpool suite next to a crackling fire or step out on your private balcony and watch the morning sun rise above our pond.

In the afternoon you may relax pool side, sit in the Gazebo, or stroll through our flower gardens.

State Parks, Fine Dining, Antique Shops all within 10 minutes from our door.



All suites include:

- Double Whirlpool
- Fireplace
- Breakfast delivered to your room
- TV/VCR, CD & Stereo
- Private bathroom with shower
- Refrigerator
- A/C
- Balconies

8 Uniquely Appointed Suites in Refurbished House & Barn
New Heated Pool & Hiking Trails

*For reservations or a color brochure, please
call Bryon and Darrin at (920) 746-0334*

4072 Cherry Road (Hwy H.H.) • Sturgeon Bay • Wisconsin 54235

www.chanticleerguesthouse.com

CHALLENGING PARTY New PrideFest Sponsor

Ten years ago, some friends wanted to help the Milwaukee AIDS Project raise some funds for a residence for people with AIDS, so they threw a party and asked everyone attending to donate at least \$250 to MAP.

The party has become an annual event called the Challenging Party, and it is usually held during the first weekend after Memorial Day for 80 to 100 people. It has raised roughly \$233,000 over the years. The funds now go to the AIDS Resource Center of Wisconsin and other gay and lesbian projects. This year's recipients include the LGBT Community Center and PrideFest. The Challenging Party remains informal, says Shelli Marquart, one of the challengers. There's no headquarters, no

mailing address, and no archives. She began attending



SPONSOR

parties four years ago and eventually was asked to become a challenger, one of eight this year.

"You have to be willing to underwrite the cost of the event to be a challenger," she said, which means that every dollar donated goes to charity. Challengers also invite organizations to make presentations for funds so they can select the recipients of each year's party donations. "There's always a strong lean toward ARCW because they're the original organization," she says, but in the past, recipients have included the BESTD Clinic, Sage, the Lesbian Alliance of Metro Milwaukee, and the Human Rights League.

Those who attend the party can divide their donation among the year's recipients any way they chose.

Challengers send out the invitations to the party, although anyone can be invited. "Mostly it started out as a core group of people and it spread by word of mouth, friends inviting friends," Marquart says. Those interested in being invited to next year's party can call the Challenger chairperson, Dave Stowe, 962-7366.

Challengers usually rotate over the years, Marquart says, and 16 people have served as challengers since the beginning. "When someone is leaving, they find someone to replace them," she says.

"I think the important thing is that every dollar donated goes directly to the organizations and supports the gay and lesbian community. It's raised a lot of money over the years."

PRIDEFEST WINS HUMAN RIGHTS LEAGUE AWARD

PrideFest won a Cream City Brick Award for Group Spirit this year from Milwaukee's Human Rights League (HRL) for Lesbians and Gays. The award recognizes PrideFest as the largest gathering of the LGBT community in the state.

In addition, Susan Cook, co-director and volunteer coordinator of the festival, won HRL's President's Award; and Michael Lisowski, vice president and booth coordinator, won the Ambassador Award.

Cream city bricks, a yellowish brick distinctive to early Milwaukee architecture, have been presented as awards for years in the LGBT community.

"PrideFest culminates in a weekend," says Scott Gunkel, HRL's legislative public policy chair, "but anyone who works on it knows that it's a year long event and helps the community a lot throughout the year just by bringing it together to work on projects." It's also the most out activity of the community, reaching closeted people and the straight community.

Cook received her award for longtime service to PrideFest, the Milwaukee Gay and Lesbian Pride Celebration, Grapevine, the Lesbian Alliance of Metro Milwaukee, and other organizations.

Lisowski has worked on PrideFest, MLGPC, Gay Youth Milwaukee, AIDS Resource Center of Wisconsin, CAIR, the Queer Show, and Tri-Cable Tonight, crossing between the straight and gay community.

HRL organizes local activities for National Coming Out Day, including a reception for public officials and a community dance; and a friends, families, and allies "Straight But Not Narrow" event co-sponsored with Parents and Friends of Lesbians and Gays.

It also organizes informational forums. It has provided training for new recruits to the Milwaukee Police Department since 1993, so now more than 60 percent of the current force has attended a three-hour program on LGBT issues. HRL members also attended the Creating Change Conference to connect with activists from around the country.

HRL organized testimony against a bill in the Wisconsin Legislature to ban same-sex marriages, and has organized rallies with the National Organization for Women. It participates in community coalitions, including election endorsements and the Domestic Partnership Task Force.

HRL's board has proposed expanding the name, bylaws, outreach and activities of the organization to include bisexual and transgender programming.

POSSUM QUEEN:

Simply Hoopla

Be prepared for fun, but not the "typical fashion beauty diva drag queen show" when the Possum Queen Campaign takes the Alyn Hess Stage from 8:30 to 10:45 Friday night, August 28. "It's going to be like a hoopla variety show," says Max Bennett, director.

Expect about 14 Possum Queen candidates to do — well, something on stage, or send someone out in their place. Maybe a magic show, tap dancing, live vocals, or a few brief and sweet words for the crowd, who knows?

There's tradition behind the laughs. In 1991, two individuals known best as Lizzie Bordeaux and Charlotte Lorraine sat in the M&M Club bar discussing what they thought was the funniest ever episode of the "Beverly Hillbillies," in which Ellie Mae ran for Possum Day Festival Queen. Their re-enactment mystified many but was a lot of fun. The next year they did it again, culminating in a well-received stage show. The following year, they got really organized, recruited a lot more Possum Queen candidates from Milwaukee bars, and made it a fundraiser for AIDS causes. The one who raised the most money became queen.

From there, "this thing has grown so quickly, so big, so unexpectedly," says Bennett, himself a contestant in the early years. "There are no rules," he adds, so candidates and their sponsoring bars raise money with everything from a "trailer park trash" stage show to bus trips to dinners to pie tosses to — well, anything legal. The 1998 campaign has been more enthusiastic than ever, he says.

The official fund raising period ran from April 19 to June 6. This year, with PrideFest moved to August, the fundraising may be over in June . . . or maybe not. "As there are no rules, whatever happens is up for grabs," Bennett says.

Last year, contestants brought in just over \$26,000, and Jack E. O. Gasm, of the M&M Club, won by raising \$10,000. Contestants can pick their recipient charity, but over the years \$88,000 has gone to AIDS causes, earning the Possum Queen Campaign the Red Rose Award earlier this year from the AIDS Resource Center

of Wisconsin.

The campaign will also award the Tommy Polubinski Trophy to the person involved with the campaign who best embodies its cause: fun and goodwill. Polubinski, the 1994 queen, died in 1996 of AIDS. Last year's recipient was Cathy Kau, proprietor of Cathy's Nut Hut.

Last year was the first year PrideFest hosted the Possum Queen show, and the campaign's Steering Team is glad to return this year. Like last year, Lizzie Bordeaux will plan the show and keep the backstage organized, in spite of the candidates.

'70s DANCE PARTY

"Come radical, come Afro-puff, come fly-guy collars, dress the part," says Charles Daniels, PrideFest's entertainment coordinator, who is organizing the Friday night Dance Tent Dance Party.

"We're going to relive the '70s and '80s," he says, "when people could enjoy the music and enjoy themselves." A community survey early this year asking what people want at PrideFest found that '70s and '80s music was the most requested. And there were requests to do something on Friday night besides the Alyn Hess performances, so the ideas were combined.

The party will start at 7:45 p.m. Friday, Aug. 28, with a deejay spinning the retro tunes that made the '70s a decade to remember. At 9:30 p.m. Joi Cardwell, a leading dance singer, will take the stage live. After that, the deejay will "house the evening up with today's house music until closing time," Daniels says.

The Dance Tent has been the most popular site at the festival. The tent tripled in size in 1997, using the largest canvas available in addition to two adjoining permanent buildings and hosting two beverage areas. But that was not big enough. The tent will be even bigger this year.

"There will be more room to party and to mingle," Daniels says. "We're giving people the time and place to enjoy themselves and meet new people — and have a flashback."



Q-VOICE AND IN STEP Sponsoring the Stonewall Tent

As a continuing PrideFest sponsor, Q-Voice Magazine and In Step Newsmagazine are supporting the Stonewall Stage, the "soapbox" where speakers can bring their messages to festival-goers and where organizations can meet with the LGBT community.

Launched in 1995, Q-Voice Magazine is Wisconsin's queer lifestyle monthly. Published in an oversized magazine format, it provides in-depth interviews with local, statewide, and national celebrities of interest to our community. Q-Voice includes unmatched coverage of Wisconsin's art scene including artist profiles and reviews. Coupled with popular features like *Out of the Closet*, *The Casual Observer*, and *Juicy Bits* by W.W. Wells, Q-Voice has quickly gained respect and accolades through-out the gay and non-gay community for its editorial content and design.

Q-Voice is distributed free of charge at over 130 locations in Wisconsin, Illinois, Minnesota and Indiana. Subscriptions are available for \$35 (first class).

Q-Voice Magazine can be reached at P.O. Box 92385, Milwaukee, WI 53202, (414) 278-7524 voice, (414) 272-7438 fax, and <http://www.qvoice.com>.

Founded in February of 1984, In Step publishes 12,000 copies every two weeks in a tabloid format, making it the state's oldest and largest LGBT publication.

In Step provides LGBT Wisconsin with the most up-to-date, comprehensive statewide and national news, a complete calendar of events, an indispensable guide to Wisconsin LGBT and supportive businesses and organizations, and the state's most effective classified ads. In Step includes extensive coverage of the arts, Wisconsin's LGBT nightlife and club scene and features regularly appearing columnists and cartoonists.

In Step is distributed free of charge at over 130 locations in Wisconsin, Illinois, Minnesota and Indiana. Subscriptions are available for \$35 (third class) and \$50 (first class).

In Step can be reached at 1661 North Water Street, Suite 411, Milwaukee, WI 53202, (414) 278-7840 voice, (414) 278-5868 fax, and by e-mail at instepnews@aol.com.

CREAM CITY FOUNDATION Sponsoring PrideFest and More

The Cream City Foundation operates simply: it raises money to fund organizations and projects that benefit the Milwaukee and Wisconsin LGBT community.

Giving has gone up each year, says Tony Rhodes, president of CCF. Much of that has been due to donations from the Miller Brewing Co. and from money raised by A Choice.

A Choice collects money in the workplace for groups who are not part of the United Way. When a United Way representative visits a workplace, employees can use donor option C to designate CCF or Cream City Foundation, or if they prefer to give to a non-gay organization, to designate A Choice, which gives a portion of its donations to its member groups, including CCF. A Choice raised \$20,000 last year for CCF.

"The funds that come through A Choice come directly from our own people through the vehicle of A Choice," Rhodes says. A

Choice money is community money. In addition, CCF raises funds through mailings and phone banks. In all, CCF will be able to donate more than \$34,000 this year.

CCF's Grants Committee reviews requests every quarter. This year it gave \$5,000 to PrideFest, and over the years, CCF has given \$42,000 to PrideFest, making it "one of our most loyal sponsors," says PrideFest Co-Director Susan Cook. "CCF made it possible for this festival to get off the ground in the very beginning."

CCF also has funded the Gay and Lesbian Film Festival at UWM, the Legal Aid Society for LGBT projects, the Human Rights League for 1997 Coming Out Day activities, CESA 7 for educator training films about lesbian and gay students, the Gay Youth Milwaukee hotline, PFLAG outreach, the Saturday Softball League's

annual Milwaukee Classic, the Women's Crisis Center, the Milwaukee LGBT Community Center, and the Holiday Invitational Tournament.



County Executive
Thomas Ament



SPONSORS

A BIGGER FESTIVAL More Stages, More Acts

Now in its third year at Summerfest grounds at Henry Maier Festival Park, PrideFest keeps growing. The 1998 festival will include the Harley Davidson Stage for additional national entertainment acts.

"The bigger we get, the better we get, and the more acts that will perform," says Jill Clark, entertainment coordinator. "A lot of bands come here because they have a great time."

PrideFest mailed 2,000 surveys in January to solicit community input on a variety of festival topics, including entertainment. Requests came in for '50s and '60s bands, blues, jazz, big band, classical, country western, gospel, punk, R&B, show tunes, and ethnic music. With that in mind, Clark and Charles Daniels, PrideFest's other entertainment coordinator, began recruiting.

Both the Harley Davidson Stage and the Miller Oasis Stage will host live performers and large performances, such as Friday evening's opening ceremonies and Friday night's Possum Queen competition on the Alyn Hess Stage. Miller will also present Mrs. Fun, Men out Loud, Musique, and Joi Cardwell.

Harley's acts will include Stardust, Sometimes Y, JackSunday, PowerPlay, and the Les Lokey Band.

Another prime performance area is the Dance Tent, which will hold a '70s dance party Friday evening, with a guest appearance by Joi Cardwell. On Saturday, Aug. 29, from noon to 5 p.m., female impersonators from all over will take the stage in the Dance Tent, including Mr. and Mrs. Mystique Wisconsin, Dynasty's Divas, Mystique Magic, and male entertainments.

"We're giving back what people asked for," Daniels says. "There's going to be more this year

plus all the excitement and energy from last year."

Other performance areas include the Variety Stage, which will host children's programming on Saturday; the Rainbow Cafe with folk, R&B, and improv; the Stonewall Stage with guest lecturers and meetings; and new this year, a Youth Activity Area with skits, shows, and games.

VOLLEYBALL Tournament and Pick-Up Games

Sixteen teams from the upper Midwest are expected to compete in this year's Miller Light-PrideFest Volleyball Tournament.

Round robin play will be underway when the festival gates open Saturday morning, Aug. 29. Tournament elimination play will begin at 1 p.m. and should end around 5 p.m. Prizes, including game balls, will be awarded at about 5:30 p.m. at the Children's Stage.

The courts have been moved this year onto festival grounds. Three grass courts will be located behind the fountain area, and will include bleachers for spectators. Miller Lite is sponsoring the games, and GAMMA, a Milwaukee social-athletic volunteer organization, is running them.

On Sunday, Aug. 30, the courts will be open from noon to 6 p.m. for pick-up games. All players are welcome regardless of ability.



MON. TUE. WED. FRI. SAT.
10AM TO 5PM
CLOSED THURSDAY &
SUNDAY

Sheboygan Antiques

(BILL) WILLARD M. JEPSEN
336 SUPERIOR AVENUE
SHEBOYGAN, WI 53081
PH. 920-452-6757

The Queer Program

LIVE	Tuesday	7pm
REPLAY	Thursday	4pm
	Saturday	12pm



Produced by
Michael Lisowski
414/265-8500
Charles "D"
414/345-3479

QUEER TV
P. O. Box 090441
Milwaukee, WI 53209

A live, weekly call-in show about the Queer community.

Serving Our Community Since 1987

GLINN PUBLISHING CORP.

GLINN Network One - America's Gay Owned/Operated Internet Provider
Gay/Lesbian International News Network

GLINN Internet Services BBS

GLINN Community Voice Mail

GLINN.COM - A Multi-Purpose Gay Site: News, OnLine Shopping, Media Database, Wisconsin Gay Guide, OnLine Gay Games, & Much More.

GLINN NETWORK ONE

Nationwide and Right Here in Milwaukee

56K Unlimited Internet Access as Low as \$12.95 Monthly

Use Your Account in Any GLINN City - Many Exclusive Features

10% Of Gross ISP Access Revenue Directly Returned to the Community

Free 10 Meg. Web Space, 3 E-Mail Accounts, Web Accessible E-Mail

35,000+ News Groups -- Low Cost Worldwide Roaming -- Free Gay Websites

GLINN NETWORK ONE

America's Gay Owned and Operated Internet Service Provider

See Us on the Web at: WWW.GN1.NET or Call (414) 289-8640

Web Site Hosting for Your Business or Organization

Milwaukee's Only Out-Front Gay Web Hosting

The Best Prices -- The Best Exposure -- The Most Value for Your Money

If You Have Internet Access Now

VISIT ALL OUR SITES -- The BIGGEST Gay Presence on the WWW

www.glinn.com, www.gn1.net, www.glinn.net, www.gayadult.com,

www.gayhome.com, www.gayglobe.com, www.gaystore.com,

www.gaycards.com, www.reality-street.com, www.cashkey.com

GLINN Internet Services BBS

Online Since 1987 Serving Our Community. Free Access.

Use any Terminal Program, Any Computer. 28.8 Modem # 289-0145

Free Files, Free Internet E-Mail and Other Features.

The First OnLine Service Listed in the Ameritech Yellow Pages.

GLINN Community Voice Mail

Since 1988. Totally Free Voice Personals -- Community Resources

Detailed Information on GLINN Network One and Other Services.

Call with a Touch Tone Telephone 24 Hrs. (414) 289-8780

GLINN's Gay Adult Entertainment Club

Only on the World Wide Web: <http://www.gayadult.com>

Big Free Level: Hot Images, Original Models, Fiction, Personals, Games

Adult Validation Level & Giant Low Cost Paid Level.

See Milwaukee's Hottest Guys Like You've Never Seen Them Before.

GLINN Publishing Corp. (414) 289-8640 or 1-888-791-8360

PARADE WILL TAKE PRIDE TO THE STREETS

Wisconsin's Pride Parade will step off at 2 p.m. Sunday, Aug. 30, and follow the same route through downtown as in the past two years. As in past years, rainbow flags hung from streetlight poles will decorate the parade route, with two new flags on Water Street located to be especially visible from City Hall.

PFLAG (Parents, Families, and Friends of Lesbians and Gays) will again serve as color guards. PFLAG members from around the state have been invited to participate. PFLAG also hopes to place several billboards around the Milwaukee area in August to celebrate pride and to share their message that "someone you know and love is gay or lesbian."

In the past, the parades had started at noon. The new, later starting time will allow people to attend church or have brunch, says Rick Finger, the parade coordinator, and will allow participants with costumes a couple more hours to get ready.

Marching units, decorated cars, and floats can enter for \$25 by Aug. 8, or \$35 after Aug. 8. Forms are available from the PrideFest office.

Prizes will be awarded to the first place marching unit, first place decorated car, and first place float, with a special award for the best use of the theme, "Many Worlds, One Community." Elaborate floats are encouraged. All units will pass the judges' stand on Chicago Street in front of the Survival/Revival Resale store, 246 E. Chicago.

Individuals may join a marching group, join in at the end of the parade for free, or line the

streets to wave and cheer.

Marchers and units will assemble at PrideFest grounds. The parade will leave from the north gate, head north on Harbor Drive to Michigan Avenue; west on Michigan to Cass Street; north on Cass to Wisconsin Avenue; west on Wisconsin to Water Street; south on Water to Chicago Street; and east on Chicago back to the festival.

The parade will leave from the north gate, head north on Harbor Drive to Michigan Avenue; west on Michigan to Cass Street; north on Cass to Wisconsin Avenue; west on Wisconsin to Water Street; south on Water to Chicago Street; and east on Chicago back to the festival.

Participants' costumes and clothing must comply with state obscenity statutes and city public decency ordinances. No jock straps, G-strings, bras, panties, or see-through clothing will be permitted. For example, anyone wearing chaps

must have jeans or other suitable attire under the chaps. Decisions about the propriety of attire will be made by the parade coordinator. These laws also apply to the festival grounds.

Finger has been coordinating the parade for five years, and treasures the feeling of watching the parade step off. "I think everyone should be the parade coordinator for one year to see what it's all about. There's something symbolic about the parade. It's our way of telling the straight world that we are here."

Chris Klein, who has helped with the organizing, recalls "goose bumps to see the pride and excitement" as the parade comes together on Sunday. "It's the community that makes the parade," she says. "PrideFest just gets the permits and provides the place. All the rest is the community."

Congratulations PrideFest '98 - Enjoy the Festival

*Nearly forgotten treasures of the past await you.
A comfortable homelike setting showcasing collectibles,
primitives & advertisements.*



**CLINTON STREET
ANTIQUES**

1100 South 1st Street • Milwaukee •
414/647-1773





DIRECTORY

AfterWords Book Store & Espresso Bar, 2710 North Murray, Milwaukee, WI 53211; 414/963-9089. Afterwords is Wisconsin's exclusive LGBT bookstore with an extensive selection of fiction and non-fiction titles, travel guides and AIDS-related literature. Afterwords also features a wide variety of gift items, cards, CDs and cassettes, videos, T-shirts and magazines. Our Espresso Bar features coffee drinks, cold beverages, and freshly baked goods.

Alternative Business Association, P. O. Box 93867, Milwaukee, WI 53202.. A business organization of Gay/Lesbian and Gay friendly business owners.

American Airlines, 333 West Kilbourn Avenue, Milwaukee, WI 53203; 800/433-7300. American Airlines and American Eagle, along with our worldwide network affiliates now offer more than 3,900 daily flights to more than 250 destinations in 40 countries. For more information, please visit our worldwide website at www.americanair.com. American Airlines, something special in the air!

American Family Insurance - Alethea Banks, 3927 South 76th Street, Milwaukee, WI 53220; 414/329-4111. Sales and service of all insurance products.

American Realty, 414/483-8819. Real estate.

Ameritech, P. O. Box 254, Milwaukee, WI 53201-0254; 414/384-9285. We are a diverse group of Ameritech employees and retirees, both non-management and management, spread across the Ameritech business units. GLEAM is primarily targeted at Ameritech LGBT employees, but is open to all Ameritech employees and retirees, regardless of their sexual orientation.

ARCW, 820 North Plankinton, Milwaukee, WI 53203; 414/273-1991 or 800-359-9272. The AIDS Resource Center of Wisconsin (ARCW) is the AIDS service

organization for 59 of Wisconsin's 72 counties. ARCW is one of the Midwest's largest and one of the nation's leading comprehensive AIDS service organizations providing health and social services for people affected by HIV disease; aggressive AIDS prevention programs; advocacy for responsive public policy on AIDS; and clinically-based treatment research.

Ballgame, 196 South 2nd Street, Milwaukee, WI 53204; 414/273-7474. Cocktail • Sports Bar. The best special prices in town.

BESTD (Brady East STD) Clinic, 1240 East Brady Street, Milwaukee, WI 53202-1603; 414/272-2144. BESTD Clinic is entirely volunteer managed and staffed providing health care services to the LGBT Community since 1974. Services include anonymous HIV antibody counseling and testing; STD diagnosis, testing and treatment for both men and women; Hepatitis A & B vaccinations; support groups for HIV+ gay men and partners, lovers and spouses and an Early Intervention Program for newly diagnosed HIV+ persons.

Boot Camp Saloon, 209 East National Avenue, Milwaukee, WI 53204; 414/643-6900. Milwaukee's Levi/Leather Bar. Home of the Brew City Bears, Firebirds, Wisconsin Leather Men's Association. Visit us at www.execpc.com/~Bootcamp.

CA Klein Accounting Services, PO Box 07744, Milwaukee, WI 53207-0744; 414/384-1640. Specializing in personal and business taxes, accounting, bookkeeping and payroll consulting. Member Milwaukee APA & ABA.

Caffe a GoGo, 414/372-JAVA. Caffe a Go Go is Milwaukee's only "Espresso Bar on Wheels" serving the finest in hot and iced specialty coffees. We are proud to serve our own "Coffee with a Conscience Blend" - grown globally and roasted locally by Stone Creek Coffee. Meet your friends in our line - it's worth the wait.

Continued on page 90

DIRECTORY

Castaways, M.C., PO Box 1697, Milwaukee, WI 53201-1697. The Castaways M.C. of Milwaukee was founded in 1979 as a leather/levis social club. The organization meets on the last Sunday of the month at the M&M Club at 4pm. The Castaways hold an anniversary run each year on the third weekend of August.

Challenging Party, P. O. Box 13241, Milwaukee, WI 5321309241; 414/681-3353.

Chan's Concessions, 7205 West 14th Street #2, Forest Park, IL 60130; (708) 366-7050. Some of the best Chinese food that comes to you. Been serving the Pennsylvania, Florida, Illinois, Wisconsin and Michigan regions for 15 years.

Chanticleer Guest House, 4072 Cherry Road (Hwy HH), Sturgeon Bay, WI 54235; 920/746-0334. A romantic country inn on 30 acres. All suites include whirlpool, fireplace, private bath, entertainment center, A/C, balconies and breakfast. Heated pool, hiking trails, Gazebo. Check out our web site: www.chanticleerguesthouse.com.

Charles D. Productions, 2900 W. Highland Blvd, #312, Milwaukee, WI 53208; 414/345-3479. The Mr. & Miss Mystique National Pageant is one of the most honestly run pageant systems around that brings business and diversity to Milwaukee's Gay community with five years of experience and integrity.

Clinton Street Antique Center, 1110 South 1st Street, Milwaukee, WI 53204; 647-1773.

Cream City Foundation, Box 204, Milwaukee, WI 53201; 414/265-0880. Foundation that supports Wisconsin's LGBT Community by raising funds needed to enhance, support and form LGBT organizations and programs within the Wisconsin LGBT Community.

DA Leonard Properties, 4400 N. 74th Street, Milwaukee, WI 53218; 414/860-4502.

Damron Company, P. O. Box 422458, San Francisco, CA 94142-2458; 800/462-6654. For over 30 years the Damron Company has forged the way for lesbian and gay travelers. Please check out our Damron Address Book, Damron's Women's Traveller, Damron Road Atlas and Damron Accommodations. Visit us at <http://www.damron.com>.

Designing Men, 1200 South First, Milwaukee, WI 53204; 414/389-1200. Wisconsin's largest LGBT gift, jewelry and T-shirt store. Many new items to choose from.

Dignity Milwaukee, 3318 North 37th Street, Milwaukee, WI 53216; 414/444-7177. Dignity/Milwaukee is LGBT Catholic community that worships every Sunday evening at St. Pius X at 6pm. All are invited to attend.

Dish, 235 South 2nd Street, Milwaukee, WI 53204; 414/273-DISH. Wisconsin's premiere Women's night spot (men welcome). Enjoy great dance music every weekend. Casually elegant and fun. Outdoor seating available.

Financial Planning Services, PO Box 92396, Milwaukee, WI 53202; 414/445-5552. Serving our community's investment, retirement and insurance needs for 15 years. 80% of all Americans are NOT properly prepared for retirement and/or disability. Let me help you REVIEW all your finances!

First Source Mortgage, 2433 N. Mayfair Road, Milwaukee, WI 53226; 414/258-5404. Real estate related loans.

Fluid, 819 South 2nd Street, Milwaukee, WI 53215; 414/645-8330. A popular cocktail lounge where the martini is king and so is the customer. Fluid has a jazzy, warm atmosphere where everyone is welcome.

Friday Creations, P. O. Box 333, Elm Grove, WI 53122-0333; 414/860-1829. Come visit Tami Friday at the Friday Creations booth. Tami offers unique, handcrafted jewelry for the queer community. Show off your pride!

G/L Community Center Trust Fund, PO Box 1686, Milwaukee, WI 53201; 414/643-1652. Operating an Endowment & Building Fund for the establishment of

Milwaukee's Community Center. A 501(c)3 tax deductible organization.

Galano Club, 2408 North Farwell Avenue, Milwaukee, WI 53211; 414/276-6936. The Galano Club is an organization which provides a safe place where gay people can participate in 12-step recovery programs, attend meetings and socialize with teach other. AA, Al-Anon, NA and SCA meetings are held at the club on a regular basis.

Gallery H2O, 221 North Water Street, Milwaukee, WI 53202; 414/271-8032. A showcase of contemporary art located in the historic Third Ward. Exhibiting both local and internationally known artists of all disciplines including fiber arts, metal sculpture, painting, photography and printmaking.

Gay Youth Hotline, P. O. Box 090441, Milwaukee, WI 53209; 414/265-8500. GYM is a support group for LGBTQ youth under 18 years of age which provides a safe space to meet and discuss their issues and concerns. GYM is devoted to promoting health, inspiring dignity, self-esteem and pride and developing advocacy among LGBTQ youth.

GLINN Publishing, 1618 N. Jackson Street, Milwaukee, WI 53202; 414/289-8640. GLINN Publishing Corp., parent of Gay/Lesbian International News Network and GLINN Network One, America's Gay/Lesbian ISP.

Hair Wrap Jewelry, 207 West Wisconsin Avenue, Appleton, WI 54911; 920/731-1223. EZ Comb Clip On Hair Wrap gives you the look of a hair wrap without the weaving in. Alternative jewelry shows self expression. We do the traditional hair wraps, too.

HIT (Holiday Invitational Tournament), P. O. Box 0899, Milwaukee, WI 53201-0849; 414/332-7142. Holiday Invitational Tournament (HIT) is an organization dedicated to producing the longest running gay and lesbian bowling tournament in the US, Canada and Australia. We invite you to become a part of the many opportunities that HIT has to offer.

DIRECTORY

Human Rights League, 1928 N. 55th Street, Milwaukee, WI 53208; 414/228-1921. The purpose of the Human Rights League (HRL) is to advance the political interests of the LGBT Community in metropolitan Milwaukee by influencing local, state, and national politics, legislation, and public policy. HRL accomplishes this mission through a wide variety of working groups, coalitions and initiatives.

Hume Law Offices, 5665 South 108th Street, Hales Corners, WI 53130; 414/529-2129. General practice law firm specializing in estate planning, business development, real estate and family law. Proudly serving the LGBT community of the greater Milwaukee and Waukesha areas.

In Between, 625 South 2nd Street, Milwaukee, WI 53204; 278-9611.

In Step Magazine, 1661 North Water Street, Suite 411, Milwaukee, WI 53202; 414/278-7840. Wisconsin's LesBiGay community newspaper. Serving the community with professionalism and integrity since 1984. Featuring news, interviews, group notes, The Classics, The Calendar, The Guide and much more!

Instinct Magazine, 4235 Arch Drive, #301, Studio City, CA 91604; 888/454-6784; 818/505-9205. Instinct Magazine is a gay men's national publication about the everyday things in life that gays deal with. We take a "be any kind of gay you want to be" approach to it, and focus on the brighter side of gay life. No politics, no hardcore queer activism, just regular gay guys talking about regular gay things from relationships to getting married; to fashion, grooming, health and fitness; to single life, party life, sex life and more. . .

Kathy's Nut Hut, 1500 West Scott, Milwaukee, WI 53204; 414/647-2673. This much fun should be illegal.

La Cage/Dance, Dance, Dance, 801-807 South 2nd Street, Milwaukee, WI 53204; 383-8330.

DIRECTORY

LAMM - Lesbian Alliance of Metro Milwaukee, P. O. Box 93323, Milwaukee, WI 53203; 414/264-2600. LAMM is an organization of Lesbian and Bisexual women committed to the education, advancement and promotion of equal rights of our community. We endeavor to achieve political and economic power through working in coalition with other organizations.

Landmark Theatre, 2230 N. Farwell Avenue, Milwaukee, WI 53202. **Oriental Theatre** (414) 276-8711 - Milwaukee's premier home for independent and foreign films.

Legal Aid Society of Milwaukee, Inc., 229 East Wisconsin Avenue, Milwaukee, WI 53202; 414/765-0600. Working in partnership to combat prejudice and discrimination.

M&M Club, 124 North Water Street, Milwaukee, WI 53202; 414/347-1962. Splendid dining in a glass-enclosed atrium. Serving lunch and dinner daily and Sunday brunch.

MACH 7, 6450 West Fond du Lac Avenue, Milwaukee, WI 53218; 414/466-9990; Racine 414/633-3883; Kenosha 414/652-1470. Mach 7 - Home Safe Home. The ultimate crime deterrent system. Put Mach 7 in today - keep the thief out tonight.

Mama Roux Bar & Grill, 1875 North Humboldt Avenue, Milwaukee, WI 53212; 414/347-0344. A well diverse crowd. Your east-side alternative.

Medical College of WI, Dept of Psychiatry & Behavioral Medicine, 1210 North Prospect Avenue, Milwaukee, WI 53202; 414/456-7700/800-644-1615. The Center for AIDS Intervention Research (CAIR) at the Medical College of Wisconsin is the only nationally-funded AIDS prevention research center between the east and west coasts. CAIR researchers devote full effort to developing new strategies for HIV/AIDS prevention and to improving the care of those living with HIV.

Miller Brewing Company, Inc., 3939 West Highland Boulevard, Milwaukee, WI 53208. Proud Sponsor of PrideFest '98.

Milwaukee Journal Sentinel, 333 West State Street, Milwaukee, WI 53203; 414/224-2000. The Milwaukee Journal Sentinel is written and published by diverse employees to be a true reflection of our state's diverse people and their communities, culture and celebrations. Call 1-800-759-NEWS for subscription information.

Milwaukee LGBT Community Center, P. O. Box 93278, Milwaukee, WI 53203-0278; 414/483-4710. The Milwaukee LGBT Community Center is a community-based organization represented by more than 100 volunteers and over 250 members. For more information, call our Hotline at (414) 483-4710 or visit us at www.mkelgbt.org.

Milwaukee Men Together (MMT), P. O. Box 100608, Milwaukee, WI 53210. MMT is an affiliated chapter of the NABWMT with 30 chapters nationwide and 10 chapters in the Midwest for men interested in interracial relationships or dating.

Outpost Natural Foods, 100 East Capitol Drive, Milwaukee, WI 53212. Outpost Natural Foods Cooperative offers consumer ownership of a community resource for whole foods, products, services and information which promote healthful living. We're a full service natural food market open 7-days-a-week.

Park East Hotel, 916 East State Street, Milwaukee, WI 53202; 800/328-7275. Milwaukee's downtown destination hotel overlooking Lake Michigan. Complimentary parking, downtown shuttle service and breakfast buffet. Call 800/328-7275 for reservations.

PFLAG Milwaukee Chapter, P. O. Box 21853, Milwaukee, WI 53221; 414/768-9485. Support, education & advocacy. PFLAG is a national organization whose members, predominantly non-Gay, serve as role models for LesBiGays by providing love and support.

Pride in Wisconsin Government, c/o The United, P.O. Box 310, Madison, WI 53701-0310; 608/255-8582. Pride in

Wisconsin Government is a statewide, non-profit, non-partisan membership organization for LGBT public sector employees and their allies. Goals include providing networking opportunities and assuring employment equity for LGBT public sector employees. Web: www.execpc.com/~dross/pride.

PrimeCo Personal Communications, 700 West Virginia Street, Suite 300, Milwaukee, WI 53204; 800/PRIMECO (774-6326). PrimeCo offers the latest technology in digital wireless phones and services.

Q-Voice Magazine, PO Box 92385, Milwaukee, WI 53202; 414/278-7524. Wisconsin's Gay & Lesbian monthly with comprehensive news, interviews, features, entertainment, fashion, humor, lots of eye candy and much more. Published the third Thursday monthly.

Queer Program, P. O. Box 090441, Milwaukee, WI 53209. A live, weekly call-in show about the Queer Community on Tuesday evenings from 7-8pm. Call us at 414/272-6282.

Sheboygan Antiques, 336 Superior Avenue, Sheboygan, WI 53081; 920/452-6757. Closed Thursday and Sunday.

Sherman Park Rainbow Association, Box 76115, Milwaukee, WI 53216; 414/777-3986 (voice mail). Monthly meeting, social activities, volunteer opportunities. Focus on neighborhood, health and civil rights issues. LesBiGay people in and around Sherman Park neighborhood.

Shoreline, Box 92273, Milwaukee, WI 53202-0273. Milwaukee's own gay & lesbian country dance group promoting country music in the gay community.

Shorewest Realtors - Jack H. Smith, 4559 North Oakland Avenue, Shorewood, WI 53211; 414/961-8314 ext. 199. Award winning! For all your Real Estate needs. Serving entire Milwaukee metro area.

Silver Dollar Cafe, 831 S. Chavez Drive, Milwaukee, WI 53204; 414/645-8860. Home of Milly's famous Farmers Omelet.

St. Camillus AIDS Ministry, 10101 West Wisconsin Avenue, Wauwatosa, WI 53226; 414/259-4664. St. Camillus HIV/AIDS Ministry provides spiritual,

DIRECTORY

emotional and physical support for persons infected and affected by HIV disease. Programming includes support groups, volunteer services, housing, health care and retreats.

Survival Revival Resale, 246 East Chicago Street, Milwaukee, WI 53204; 414/291-2856. Survival/Revival Resale, Milwaukee's best resale shop, is located in Milwaukee's Historic Third Ward. The shop features furniture, clothing, tapes and CDs, small kitchen appliances, dining and cookware and many unique, one-of-a-kind items. All donations to the shop and sale proceeds benefit the AIDS Resource Center of Wisconsin.

This Is It, 418 East Wells Street, Milwaukee, WI 53202; 414/278-9192. Milwaukee's premier cocktail lounge! Great drinks, great music, great people, great fun! Open daily at 3pm.

Westridge Labs/ID Lube, 16842 Mullikan Avenue, Irvine, CA 92606; 714/975-8522. I-D Sensual Lubricants, Juicy Lube (flavored lubricants) and Millenium (silicone based lubricant).

Windy City Rodeo '98, P. O. Box 14878, Chicago, IL 60614; 773/592-4962. Windy City Rodeo '98 is a Miller Lite IGRA Rodeo produced annually by the Illinois Gay Rodeo Association to benefit community charities. This year's Rodeo is held at the Lake County Fairgrounds, just off I-94 near Gurnee Mills & Six Flags. Shoreline-Milwaukee hosts a country western dance on Saturday, August 29 at the Hyatt Deerfield to benefit Camp Heartland.

Wisconsin Community Fund, 122 State Street, #507A, Madison, WI 53703, 608/221-0916 and 1422 North Farwell, Suite 100, Milwaukee, WI 53202, 414/225-9965. The Wisconsin Community Fund raises and disburses money to progressive groups working for democracy, justice and social and economic equality. Wisconsin Community Fund also supports grassroots activism through outreach and education, technical assistance and coalition building.

Continued on page 94

DIRECTORY

Wisconsin Electric/A Wisconsin Energy Company, 231 West Michigan Street, Milwaukee, WI 53203; 441/221-2106.

Wisconsin Light, 225 South 2nd Street, Milwaukee, WI 53204; 414/226-0075. Same commitment to Wisconsin's LGBT Community. Same great paper, brand new look. Stop by and visit us at our New Office - 225 South 2nd Street. Watch for many new, exciting changes. Fax: 414/226-0096.

Wisconsin Research Center, P. O. Box 92041, Milwaukee, WI 53202; 414/272-9984. The Wisconsin Research Center is an information clearinghouse which monitors the political activities of the Radical Right in Wisconsin.

Woody's, 1579 South 2nd Street, Milwaukee, WI 53204; 414/672-0806. Great place to play pool, shoot darts and have a fun time.

Wychwolde, 8321 Antioch Road (Rt. 83), Salem, WI 53168; 414/843-4209. Wychwolde sells gold and silver jewelry and unusual art from Mexico, Africa as well as southwestern US. Jewelry repairs, custom design and appraisals.

SILVER DOLLAR CAFE
831 S. Chavez Drive
(16th Just South Of National)



*Home of the Famous
Farmers Emelet*

MON - THU 6am - 6pm
FRI - SAT 12am - 6pm

PrideFest Advance Ticket and Button Outlets

AfterWords Book Store
2710 North Murray Street
Milwaukee, WI
414-963-9089

Designing Men
1200 South 1st Street
Milwaukee, WI
414-389-1200

This is It! (Buttons only)
418 East Wells Street
Milwaukee, WI
414-278-9192

Zas
1106 Main Street
Green Bay, WI
920-435-5476



LADIES AND GENTLEMEN.

We're sensitive to the distinct insurance needs of both men and women. Call today for the right kind of coverage.

Alethea Banks Agency
3927 S. 76th Street
Milwaukee, WI 53220
414-329-4111 - Office
414-205-3824 - Pager
www.amfam.com

AMERICAN FAMILY INSURANCE
AUTO HOME BUSINESS HEALTH LIFE

American Family Insurance Group
Madison, WI 53783