

THE OFFICIAL PUBLICATION OF PRIDEFEST

*P***roud**
FROM THE INSIDE AND OUT
PrideFest® *2000*



Wisconsin's
Lesbigaytrans Pride Celebration
June 9th, 10th and 11th

PRIDE GUIDE SPONSORED BY



HENRY W. MAIER FESTIVAL PARK

General Information

DATES/TIMES OF PRIDEFEST 2000

(All times subject to change if weather conditions or other unforeseen circumstances develop)

Friday, June 9, 2000 (Market Place not open on Friday)

Miller Oasis open	5:00pm
Opening Ceremony	6:30pm
Parade Step-Off	7:30pm
Festival closes	Midnight

Saturday, June 10, 2000

Gates open	Noon
Fireworks Saturday night	10:15pm
<i>(Raindate: Sunday, August 8, 1999, 10:15pm)</i>	
Festival closes	Midnight

Sunday, June 11, 2000

Interfaith service	Noon
General admission opens	Noon
Festival closes	10:00pm

ADMISSION PRICES

- \$6 at the gate
- \$15 three-day pass
- Three-day passes will be for sale at the gate Friday night.
- Children 12 and under free when accompanied by an adult.

FREE ADMISSION

- Get in Free all day, every day with your Pride Card.
- Saturday and Sunday, Noon to 2:00pm when you wear your PrideFest button.
- Friday, 5:00pm to 9:00pm, and Saturday, Noon to 2:00pm when you bring four or more non-perishable food items for local pantries.
- Sunday, 2:00pm to 4:00pm with your Milwaukee Journal Sentinel Press Card.

FESTIVAL SITE

2000 will see PrideFest at the Henry W. Maier Festival Park (Summerfest grounds), along Milwaukee's lakefront for the fifth consecutive year.

HOTEL AVAILABILITY & VISITORS INFORMATION

For more information, contact PrideFest at 414-645-3378 (Fest) or <www.pridefest.com>. For hotel and special travel information, contact the Greater Milwaukee Convention & Visitors Bureau at 1-800-554-1448.

Publishers: 2000 PrideFest Council and Havlicek & Associates. Writer: Susan Cook. Cover/Official Logo Design: Barb Peterson, Wild Child Design. 1998 Festival Photos: Douglas Krimmer. ©2000 PrideFest Council and Havlicek & Associates; all rights reserved. No portion of this publication can be reproduced in any manner without the expressed consent of the publishers. Publication of the name or photograph of any person, business or organization in articles or advertising is not to be construed as an indication of the sexual orientation of such person, business or organization. The 2000 PrideFest Council and Havlicek & Associates disclaim any responsibility for claims made by advertisers. The views expressed by contributors are not necessarily those of the 2000 PrideFest Council and/or Havlicek & Associates

General Information

YOUR BEST ROUTE TO PRIDEFEST

Take I-94 east from Madison, I-43 south from Green Bay, or I-94 north from Chicago to the I-794 spur east in Milwaukee's downtown Marquette Interchange.

Exit right at Plankinton Avenue (Exit 1D) or exit left at Jackson Street (Exit 1E) or exit left at Lincoln Memorial Drive (Exit 1F).

Follow the green and white signs with red smiley faces to the Henry W. Maier Festival Park at the lakefront.

Please be especially alert to highway construction and lane closings. We want everyone to arrive at PrideFest and return home afterwards in safety. For statewide road conditions, visit <www.dot.state.wi.us> and for a live congestion map check <www.dot.state.wi.us/dtd/hdist2.cams.html>.

PARKING

Ample parking is available both in privately operated lots for a fee, or along city streets (meter parking). Disabled parking is available in Lot G for a fee. Vehicles must display handicap plates or permit. Vendors with booth spaces will receive directions to specific gates for loading/unloading.

LODGING PACKAGES AT BEST WESTERN

Looking for a bit of elegance while attending PrideFest? The Best Western - Inn Towne Hotel has put together three special packages for you to choose from! Inn Towne Hotel is located in the heart of downtown Milwaukee, and just minutes from the festival with ample shopping opportunities within walking distance along Wisconsin Avenue.

Package One includes preferred room accommodations at the Inn Towne Hotel. It also includes free parking at the hotel, deluxe continental breakfast, tickets and transportation to PrideFest and a four-course dinner for two at the elegant Boulevard Inn. Cost is only \$149 for double occupancy, inclusive for 2.

Package Two includes all of the above except replaces the dinner with a \$15 gift certificate towards dinner for two. Cost is \$99 for double occupancy. Package Three includes room, tickets and transportation only at a cost of only \$89 for double occupancy.

Join in on Wisconsin's largest LGBT celebration, located at the best outdoor festival facility in the nation. To make a special PrideFest package reservation, or for more information, call the hotel toll-free at 1-877-ITHOTEL. Space is limited so make your reservations early!

Downtown Auto Body
 3425 North Holton Street
 Milwaukee, WI 53212


"If we can't fix it,
 We'll bury it"

Fender Repair
 Refinishing
 Wrecks Rebuilt
 General Repairs

Phone
964-7170

Fax
964-5010

E-Mail
<http://www.angelfire.com/wi/downtownautobody/>



Kate Wishaar, Ph.D.
 Psychotherapist

Psychotherapy
 Art Therapy

Individuals
 Couples

Sliding Fee Scale
(414) 276-4664

WELCOME

PrideFest 2000: Proud From the Inside and Out

As a Lesbian, Gay, Bisexual or Transgendered person, we each have a point in our personal history that marks the change in the direction our lives took. We call it our "coming out story." Coming out stories are as diverse as the people who can tell them. For some of us, the coming out story is interspersed with heartache, while for others, coming out was as easy as naming a favorite color.

The coming out story covers a fairly precise period and it is marked with distinct memories of the people who were around us at the time. And it almost always starts with the one person it was hardest to tell our "secret" to — ourselves. It is our self-acceptance, and inner pride, that makes it possible to come out to ourselves, and as that pride works its way out, it becomes possible to come out to those around us.

PrideFest is one of those places where we all can tap into our inner pride and let it out so as to proclaim our self-acceptance to each other. However, it would be a great disservice to the LGBT community if our self-affirmations stopped at the gates on the way out of the festival. In order to bring about the societal changes needed for LGBT people to claim their equal rights, it is necessary to tell our stories to those people outside of our community, including our families, neighbors and co-workers. By telling other people about ourselves, we make it impossible for them to ignore our aspirations because we have put faces on the issues.

We welcome you to PrideFest 2000 where we will be celebrating "Proud From the Inside and Out." Come and celebrate our community, share in the camaraderie of "family" and, when it's all said and done, take the spirit of PrideFest back with you, out to the rest of the world, and tell **your** story.

FROM MILWAUKEE, WITH PRIDE: HISTORY OF THE LGBT PRIDE OBSERVANCE

The Gay People's Union was the first organization in Milwaukee to host an event that had Pride appeal, with over 350 people attending the GPU Ball in 1974. Other dances and parties were hosted in the years that followed, but it wasn't until after the 1987 March on Washington did the Pride Movement take a strong hold in Milwaukee.

The first official Pride events were hosted by the Milwaukee Lesbian/Gay Pride Committee in 1988, complete with a softball tournament and picnic at Mitchell Park, a formal ball, town hall meeting with elected officials and a film festival. Several hundred people participated in the week-long events.

In June 1989, the MLGPC organized a march and approximately 500 sign-carrying people walked the two miles from the Walker's Point bar district to Cathedral Square for a rally where another 500 people had gathered.

This particular event generated a great deal of controversy in the City of Milwaukee, mainly because the proclamation issued by Mayor John Norquist ended with the words, 'We are proud of who you are.'

Both the mayor and county executive were threatened with recall campaigns initiated by religious-based conservative groups. By the end of the day, the MLGPC march and rally was the opening story on all three major news telecasts and featured on the front page of the Sunday Milwaukee Journal. The city could not ignore its LGBT citizens because the LGBT community would no longer allow it to.

The march and rally were held at Cathedral Square again in 1990. In 1991, 1992 and 1993 the rally was moved to Juneau Park along the lakefront, an area that could accommodate the growing crowds. Entertainment and food were added, creating a festival atmosphere.

In 1994, the original MLGPC was dissolved and the new PrideFest was incorporated. Having outgrown the Juneau Park area, PrideFest moved to Veterans Park featuring exhibits, three stages, a few dozen crafts people and vendors, and a full

two days of activity. This was repeated for PrideFest '95 with the addition of the 'Light Up the Sky with Pride' pyrotechnic and laser light show. PrideFest was the first Pride event in the nation to host its own fireworks display.

1996 found PrideFest moving again, this time to the spacious Henry W. Maier Festival Park, the best festival facility in the U.S. With permanent stages complete with professional lighting, food buildings, vendor pavilion and support from the staff of Milwaukee World Festivals Inc, the managing body of the park, PrideFest joined 14 other festivals that used the park for their events. In fact, PrideFest had the distinctive honor in 1996 of kicking off the festival season for Milwaukee, which has the unofficial slogan 'City of Festivals.' The hours were expanded to 2 1/2 days. Despite a stationary cold front, complete with driving torrential rains, 9640 brave souls attended. The 1996 festival has been fondly remembered as 'RainFest' ever since.

By 1997, PrideFest was hosting entertainment on four stages, presentations and lectures in two activity areas, the Miller Lite Volleyball Tournament, the Pride Parade, a religious ceremony on Sunday, the mass wedding/commitment ceremony, and fireworks show. In addition, over 100 vendors sold merchandise or promoted the services of their organizations. The biggest piece of canvas was set up for the largest Dance Tent ever, holding over 600 people at any one time. Friends, family members and lovers danced to the music of the tribute band, 'Bjorn Again,' leaving the festival with a sense of fulfillment. More than once people hesitated to exit through the gates from our fantasy-land come true. It was a family reunion for 12,278 people.

A record crowd of 14,478 people attended PrideFest '98. Not only were the festival grounds expanded to include another premier stage, for the first time PrideFest had August dates. The date change was necessary to accommodate the 95th Harley Davidson Anniversary Celebration, which was already scheduled years in advance to

Continued on page 8

PRIDE WEEKEND



MADISON

JULY 13-16, 2000

Madison's Pride Rally, March & Celebration

Sunday, July 16, 2000

Rally: 1:30pm, State St. Steps of Capitol

March: 2pm, Capitol to Brittingham Park

Celebration: 2:30pm - 6pm, Brittingham Park

All events are ASL interpreted for enjoyment by all.

<http://www.madisonpride.org> - info@madisonpride.org - 608.848.2239 (David)

These events are generously co-sponsored by:

AIDS

NETWORK

Continued from page 6

occur in June. Fortunately, the month of August had five weekends in 1998, making way for a late summer Pride celebration. The incredible August weather played well to the success of this banner year.

PrideFest was fortunate again in 1999 to have August dates. This time it was due to the five weekends that fell during the month of July. African World Festival, one of the other festivals that used the grounds, opted to take late July dates rather than their traditional first weekend in August, giving PrideFest the opportunity to have another late summer celebration. Despite thunderstorms in surrounding counties, only a few showers fell on the festival on Saturday, with the weather clearing again in time for the Sunday parade. 13,455 attendees passed through the gates and enjoyed three days of camaraderie. The headliner for the festival was Kathy Sledge and her "We Are Family" echoed in the community for many months thereafter.

With only four weekends in the months of July and August, PrideFest 2000 returns to the traditional Pride observance month of June when it, once again, has the honor of kicking off the festival season. And while tradition plays heavily at the festival, PrideFest organizers look at the start of the new century as an opportunity to have a new beginning for the festival. We'll see you June 9, 10 and 11 when a new chapter in our history will be written.



Kathleen A. Neville MS, CICSW
Psychotherapist
 Lakeshore Clinic
 3970 North Oakland, Suite 501
 Shorewood, WI 53211
 414 . 332 . 3331

ID BRACELET: GET CARDED, STAY CARDED

There is nothing like an ice cold beer or wine cooler to quench the thirst while attending PrideFest! Of course, state law requires all festival patrons to be of legal drinking age. To best comply with this law, and to reduce the constant hassle of carding people of legal drinking age, PrideFest is doing what many other special events are doing — ID bracelets.

Festival-go'ers who plan to drink need only show their ID once and have a bracelet snapped on their wrists. The bracelets will be available at the information area and all drink ticket booths. Banners will mark places where the bracelets are available.

Bracelets are required regardless of age and apparent wrinkles for anyone buying or consuming alcohol. Different colored bracelets will be provided each day of PrideFest. Patrons with beer or wine and without a bracelet that are spotted by security personnel may be challenged to provide proof of age.



5 Applegate Ct. - Madison, WI. 53713
 (608)277-9700 fax(608)277-8704
 Club5Q@aol.com www.Club-5.com
 TOLL FREE 1-877-648-9700



Live DJ Nightly at 10pm
Club 5 Restaurant

NEW CHEF - NEW MENU

Outdoor Patio Open for Dining
 Dinner Tues-Sat 5-10pm, Sun 5-9pm
 Lunch Mon-Fri 11-2pm
 Sunday Brunch 10:30am-2pm
 Fri & Sat Late Nights 12midnight-3:30am
 Live Entertainment Every Sunday

WHY WE MARCH

This letter was prepared in response to the debate of whether the community's taking to the streets during PrideFest was a march or a parade:

March 15, 2000

Ms. Roseann St. Aubin
Permits and Communications Manager
City of Milwaukee - Department of Public Works
841 North Broadway, Room 516
Milwaukee, WI 53202

Dear Ms. St. Aubin:

It has come to our attention that there has been discussion as to how to classify PrideFest's annual march. I hope this letter will provide you with the necessary information to assist you with that decision.

Since 1969, lesbians, gays, bisexuals and transgenders have celebrated the anniversary date of the start of their modern civil rights movement with marches and rallies during the month of June. LGBT people view the historical significance of the Stonewall Riots in the same light as the African American community regards the marches on Selma, Alabama. In the past, these events had a very strong political message pertaining to the civil rights for all people regardless of their sexual orientation.

During the past 30 years, the LGBT community has made significant gains in the areas of public acceptance, political influence, equal application of justice, and the ability to exercise more of the personal freedoms outlined in the US Bill of Rights. Because of this, the old-time political marches have evolved into more celebratory events, such as what PrideFest hosts each year.

However, even with the addition of a band and a few floats, the significance of our event is still political. At no other time can LGBT people walk arm-in-arm down the city streets of Milwaukee, affirming publicly as to who they are. This is both a personal and political defiant statement to those who still believe LGBT people should not have the same civil rights as those in the major society, and a reflection of the same vision the marchers in Selma had some 30 years ago.

The units that march reflect that political statement. As of this date, the groups that have signed up to march include the Log Cabin Club, a Gay Republican Organization; Milwaukee Public School L/G Advisory Group; Parents & Friends of Lesbians and Gays (PFLAG); Gay Father's support group; and the AIDS Resource Center of Wisconsin. Each one of these non-profit organizations shares a message regarding the social and political needs of LGBT people everywhere. And, we do have one auto body business that has submitted an application to have a car in the event.

It is true that PrideFest is trying to do something a little different this year with the march, but for those who walk the route, or watch from the streets, the Pride "parade" is still the bold political statement, "We are here!" It is a celebration of what we have gained so far, but since it can only occur once a year, it is still a reminder of the work that lies ahead of us.

I hope this letter helps clarify the nature of our event, and that the Permits Office recognizes it as a march rather than a parade. Thank you for considering our letter in the decision-making process. Should you have any questions, please do not hesitate to contact me at 645-3378.

Sincerely,

Rick Finger
Pride Parade Coordinator

Sponsors

MILLER

PrideFest wishes to express its sincere appreciation to the Miller Brewing Company for its outstanding continued support. Miller has been PrideFest's most faithful corporate donor, and has had a significant impact on the growth of the festival over the years. Miller's contribution has made it possible for us to present the "Light Up the Sky with Pride" fireworks extravaganza, and host our largest entertainment line-up on the five star Miller Stage.

Miller's generosity toward PrideFest should come as no surprise to anyone. The company is well known for its commitment to diversity in all phases of community life. Miller has supported many LGBT events such as the International Gay Rodeo Association; NAGAAA World Series, and Pride celebrations in New York, Los Angeles, San Francisco, and other cities across the country.



Also a leader in the fight against AIDS, Miller has given millions to local and national AIDS organizations throughout the US. What may not be known is that Miller was the first and continues to be, the largest corporate contributor in the fight against HIV/AIDS in the State of Wisconsin. Miller has also produced an AIDS awareness advertisement campaign in support of local AIDS organizations.

The festival planning council thanks Miller Brewing Company for making it possible for PrideFest Inc. to produce Wisconsin's largest Pride event.

ID LUBE: SPONSORING ID BRACELETS

Westridge Labs, which manufactures ID Sensual Lubricants, is returning as a PrideFest sponsor.

"We are committed to support the LGBT community," says Michael Brown, director of promotions. "We are proud to be a sponsor of



Wisconsin's PrideFest celebration."

In addition, ID Lube works closely with non-profit organizations, and through a company called Total Access, provides its product at a discount to groups like AIDS outreach organizations and Planned Parenthood clinics.

"We are 100 percent dedicated to consistency and quality of the product, as well as allocating a great deal of our yearly profits by giving back to our customers through our sponsorships and promotional programs in the community," said Nelson.

The product line comes in regular, Plus with nonxynol-9, and Juicy Lube in nine flavors. It is one of the top selling lubricants on the market and was rated best in a product test by Men's Confidential magazine.

FLUID SPONSORS VOLLEYBALL SOCIAL

Milwaukee's very popular bar, Fluid, will host the 2000 PrideFest Volleyball Social. Last year was the first year the volleyball games were available for casual pick-up games, and the courts were popular for both players and volleyball watchers.



The volleyball courts are located on the greens, just south of the Dance Tent. Ample bleacher seating is available to catch both the

action and some sun rays. The volleyball equipment is provided courtesy of GAMMA, a local social and athletic organization. GAMMA volunteers are also on hand during the entire festival to help, as-needed, during the games.

Fluid, located at 819 South 2nd Street, is a unique martini bar with a friendly atmosphere and beautiful decor. So whether you are a local, or visiting Milwaukee, be sure to stop in and share in some of your favorite drinks among friends.

Sponsors

FOR TRAVELERS, THERE'S DAMRON

For 36 years, the Damron Company, a gay-owned publisher, has forged the way for lesbian and gay travelers. In 2000, it has renewed its commitment to our community by once again becoming a PrideFest sponsor.

Even those who haven't used a Damron guide before probably know of the Damron Address Book or other Damron gay and lesbian travel guides. Many gay men and lesbians find them indispensable.

The Damron Address Book, the original gay travel guide, is still the best-selling book of its kind in the country. Covering the U.S., Canada, Mexico, the Caribbean, and several major European cities with over 9,000 listings, "the Guide" (as it's affectionately known by almost 1 million readers) has been recognized by the New York Times, Out & About, the Advocate, and Out as the most comprehensive guide for gay travelers.

The Damron Women's Traveler, now in its tenth year, provides lesbian travelers with all the information they need to plan the perfect vacation. It includes an extensive Travel & Tours section listing local and national women's events, a camping and RV park index, and city overviews that highlight women's businesses. Both the men's and women's travel guides now cover highlights of Paris, London, Berlin, Amsterdam and Spain.

The Damron Road Atlas covers major North American, Canadian, and European cities and pinpoints accommodations, bars, restaurants, and bookstores that welcome lesbians and gays. Its easy-to-read color maps and larger format make it a favorite with both business and vacation travelers.

Damron Accommodations sets a new standard for lesbian and gay guides. The premier edition, which appeared in 1995, charmed travelers and travel professionals alike with its stunning color photographs and clean, elegant design. The third edition includes new listings for Europe and Australia, in addition to the U.S., Canada, Mexico, and the Caribbean.

If you're making a quick trip somewhere and don't want to buy the whole guide, you can search for the information you need in Damron's online database. You can search most categories for free, and it's only \$9.95 for 3 months of unlimited searches. But consider, also, that all Damron travel guides are 20% off when purchased through Damron's online store.

Guiding queers into the 21st century, Damron is determined to remain the "First Name and Last Word in Gay Travel" for decades to come.

Damron can be contacted at (415) 255-0404, (800) 462-6654, and on the web at <<http://www.damron.com>>.

Photo by Doug
Krimmer
PrideFest '99



INTERFAITH SERVICE - SUNDAY, JUNE 11

People of all faiths are welcome at an ecumenical service scheduled at Noon on Sunday, June 11 at the Miller Stage. The Rev. Andrew Warner will officiate. Rev. Warner currently serves the Associate Pastor of Plymouth Church in Milwaukee, Wisconsin.

"The service is going to be the most open we can have," says coordinator Ted Berg, who is arranging for representation from both Christian and non-Christian faiths. The United Church of Christ, Dignity, and Metropolitan Community Church are already involved, and he is continuing to invite participants.

Warner earned a degree from Colgate, and his Masters of Divinity from Harvard University. He has worked in a hospital chaplain training program for a year in Minneapolis. He has been a minister for 3 years.

Andrew's ministerial duties are: Preaching, running the Christian Education Program,

officiating at LGBT unions, and coordinates "Maybe Baby" (A support group of LGBT people wanting to adopt. He and his lover, Jay, are in the process of adopting).

One of the new additions to this year's service is a special corporate prayer for the diversity of our community. The prayer will be said while various representatives from the spectrum of our community light multi-colored candles. This is a symbolic act of commitment from the Affirming, Reconciling and Open Churches to the diversity of our community. It unites a supportive spiritual community and festival go'ers with a symbol of love.

An hour of Fellowship will follow the service in the Rainbow Cafe tent. All LGBT welcoming churches are invited to send literature to be placed at a table during the Fellowship Hour.



Clarity Writing & Research

J. Jamakaya

- Grant Proposals
- Business Writing
 - Newsletters
 - Press Materials
- Corporate & Organizational Histories

Phone: 414/276-6935

Email: Jamakaya@aol.com

*Proudly documenting the feminist, labor,
and gay and lesbian communities
in Milwaukee for 24 years.*

SOUVENIRS

Attention PrideFest shoppers: Official PrideFest logo merchandise can be purchased at the souvenir stand located on the northeast side of the Miller Oasis. Whether you are shopping for yourself or a friend, you will find a great selection to choose from. Shirts will come in a variety of styles and colors. For those who collect pins, be sure to pick up a four-color PrideFest cloisonné. This year's selection includes souvenirs with the special 2000 slogan design, as well as the PrideFest corporate logo. Also, by popular demand, the souvenir stand will have disposable cameras, film, aspirin, sun block and other sundries.

Souvenir cups will also be available at the PrideFest Merchandise Booth, as well as other locations throughout the grounds, for \$2. When used on the festival grounds, visitors get three additional ounces of beer or soda at the same cost of the disposable cups. Not only are the cups inexpensive souvenirs, they also help cut down on waste by reducing the number of throw-away cups.

Take a little bit of PrideFest home with you!

YOUTH ACTIVITY AREA - BY AND FOR YOUNG PEOPLE

Due to its success last year, the Youth Activity Area, has been relocated to the area just south of the Main Gates. Youth Area Coordinator Justin Lockridge is helping to organize a full weekend of activities for Wisconsin's LGBT youth. "We want LGBT youth to be in the forefront at PrideFest. What better place to be than just inside the main gates," said Lockridge.

The Youth Activity Area, which made its debut in 1998, has become a very popular area to see and be seen. Programs range from panel discussions to variety shows. Lockridge summed up the program planning. "Whatever youth want to do, we will help them make it happen."

Young people from around the state are encouraged to participate in the program planning. Anyone with an interest or inquiry can contact Justin by calling the PrideFest office at 414-645-3378 or e-mailing him at <pridemilw@aol.com>.

books

gifts

cards

music

videos

espresso

PRIDE!



R-E-L-A-X

Take a break from the Fest!

Discover our newly remodeled espresso bar & explore everything Afterwords has to offer! FREE beverage with any \$25 purchase on June 10 & 11

Afterwords' PrideFest BIG Book Sale

15% Off Paperbacks • 20% Off Hardcover
in store only, June 10-11, 2000



cards, books, coffee & more!

AFTERWORDS • 2710 N. Murray Ave. • (414) 963-9089 • www.afterwords.com

DOUGLAS KRIMMER: OFFICIAL PRIDEFEST PHOTOGRAPHER

Because of the outstanding photographs Doug Krimmer took at PrideFest the past few years, he has now been named the Official Photographer of PrideFest. His brilliant color photos of last year's festival adorn the brochure for this year's fest.

"I started taking photos at PrideFest even before they knew I was doing it," Doug recalls. "I started shooting PrideFest in 1994 as a self-assignment. I'm not a gay guy but I find the gay community very interesting. There's a special energy there – something that I just really like."

Doug took almost 700 photos at PrideFest in 1998. He mounted an exhibition called "PrideFest Portfolio" at Gallery H2O (a gallery he co-owns with PrideFest logo artist Barb Peterson and two others) last October. "I try to let the photos speak for themselves, though I think I bring a sense of empathy and even a bit of pride

myself," Doug says. "I wanted to show a side of the community that people don't expect. I mean, it isn't just the drag queens. It's the commitment ceremony, the kids, the older folks – it's a tremendously diverse culture within the gay community."

He isn't uptight about being a straight man among LGBT people and he's never felt any hostility for being different. "I have the feeling that in this community there really are no outsiders. Everyone is accepted, and I really like that."

As the official photographer, Doug has carte blanche to wander the PrideFest grounds and take photos of anything that catches his eye. The photos will be used in various publicity materials for PrideFest. They also contribute to documenting its history.

Gallery H2O is located at 907 South 1st Street and is a neighbor of PrideFest's.



BOOTCAMP

MILWAUKEE'S LEVI/LEATHER BAR

209 EAST NATIONAL AVENUE • MILWAUKEE, WI • 414•643•6900
www.execpc.com/~bootcamp

CHILDREN'S DAY

If you know someone 12 years old or younger, be sure to bring them to PrideFest on Saturday, June 10 for Family Day. Fun activities to celebrate families will be offered from Noon to 5:00pm in the Children's Area, located towards the center of the festival grounds. Children 12 and under can enter the festival free when accompanied by an adult.

The Uppity Women stilt-walkers, who were a big hit in 1998, will be returning to PrideFest specifically for Children's Day between the hours of 1:30 and 4:00pm. Creative Connections will be providing materials to make a PrideFest hat from 1:00-3:00pm, followed by the song troupe Side-By-Side. The Pride Band will then make a special appearance in the Children's Area at 4:00pm. Other activities also in the works are jugglers, face painting, clowns, balloon sculptures, sing-a-longs and more. The Children's Play Area, complete with towers to climb, slides and other fun activities, will also be open unless the grounds are overly wet.

Starting at 7:00pm, entertainment for the balance of the evening will be more suitable for adult audiences.

CRUISE AROUND THE FESTIVAL GROUNDS

The Spirit of Milwaukee, one of the finest cruise yachts in Milwaukee Harbor, will be taking 600 lucky festival go'ers out on Lake Michigan as part of the activities surrounding PrideFest weekend. Four separate cruises will depart from the berth alongside the restaurant, Pieces of Eight, which is located at the east end of Michigan Avenue. For two hours the ship will sail around the lake, giving everyone on board a chance to enjoy a unique view of the festival grounds and cityscape.

Those on board will enjoy appetizers, drinks and the spinning of DJ Ty, formerly of La Cage in Milwaukee and Kirby's in Madison. A special fireworks cruise will depart at 9:30pm Saturday night. Other cruise times are Saturday, 7:00-9:00pm and two cruises on Sunday, 4:00-6:00pm and 6:30-8:30pm.

Cruises are limited to 150 people each. Tickets are \$45 for the standard cruises and \$50 for the special fireworks cruise. Cruise fees also include a free ticket to PrideFest.

For more information or to obtain tickets, call 414-961-1117.

Photo by Avery Photography, Inc.

MAKE THE DIFFERENCE

IN A CHILD'S LIFE

Provide a Full or Part Time
Nurturing Home

• Treatment Foster Care •
• Respite Care •



St. Aemilian-Lakeside, Inc. 414-463-1880 x256

Food & Drink

FOOD, FOOD AND MORE FOOD!!

When you come to PrideFest this year, bring your appetite!

PrideFest visitors will have no problem looking for a bite to eat. Since moving to Maier Festival Park in 1996, PrideFest has been working on expanding the food offerings, and this year is no different. Food vendor applications are coming in every day, but here is the list of confirmed vendors with just some of their menu items:

3-B's Concessions: The tradition continues with corn dogs from 3-B's! And don't forget those memorable Italian or Polish sausages served thick with onions and green peppers! You'll find them in their usual place alongside the main walkway, just inside the Miller Oasis.

Anderson's Corn: What's a festival without delicious, hot-buttered corn? The sweet aroma of roasting corn will lead you directly to their booth, along the walkway in the Miller Oasis.

Di Vinci's Pizza: Order pizza by the slice or share a whole one with friends! You'll find a variety of toppings to choose from. Di Vinci's Pizza is located on the east side of the Miller Oasis and is proudly staffed by volunteers from

the Galano Club who will be earning a percentage of gross sales.

Gloria Jean's Coffees: Need a little pick-me-up? Freshly brewed coffees can be had, along with your favorite special flavored java. Located in the trailer across from the PrideFest souvenir stand, on the east side of the grounds.

Gus' Mexican Cantina: Burrito, tostada, enchiladas. So much to choose from. Can't make up your mind? Order the Plato Cambinado and go wild! You'll find Gus smiling from the window on the east side of the Miller Oasis.

Juicy Fruits: Need something cold and creamy to quench the thirst. Stop by and get a smoothie, a ice cold blended fruit drink. Also apple, orange and cranberry juices and fresh fruit cups. Also ice tea and fresh lemonade. For-all the Frankfurter lovers out there — a build your own weenie bar! Located on the east side of the Miller Oasis just south of the Children's play area.

K & E Concessions: Looking for some tangy Bar-B-Q pork or sassy chicken sandwiches?

Follow your nose to the large trailer next to the Pride Grill on the west side of the Miller Oasis, and be sure to add a side of mozzarella marinara or sour cream & chive french fries.



Photo By Doug Krimmer
PrideFest '99

Continued on
page 32

**Congratulations
on 12 Years!**

**WISCONSIN
ELECTRIC
is a proud
sponsor
of
PrideFest 2000**

Proud
FROM THE INSIDE AND OUT
PrideFest® 2000



*Committed to meeting the
needs of our employees,
customers and community.*

Karen's Big Olaf Supercones: Hot weather is time for cool treats! Try a waffle cone with some of the smoothest ice cream around! And for the serious ice cream lover, try a Turtle Sundae or Banana Split! You'll scream for ice cream on the east side of the Miller Oasis, next to the Children's area (of course!)

Lar's Lil Orbits: And when you're looking for something to satisfy that sweet tooth, check out the donut stand. And there are bags of dippers for those who like to add their own sugar or icing.

Pride Grill:
PrideFest's "main kitchen" is located in the large building on the west side of the Miller Oasis. You'll find some traditional festival fare such as burgers and brats, and some not-so-traditional fare, such as vegetarian burgers and honey dipped chicken sandwiches. The Pride Grill is proudly staffed by volunteers from the AIDS Resource Center of Wisconsin who will be earning a percentage on the gross sales.



South of the Border: Some like it hot and spicy, and those who do should pick up an order of grilled Texas Rib-eye or deep-fried beer batter finger steaks. Would you like some jalapeno poppers or haystack onion rings with that? They're cooking up a storm just north of the Pride Grill on the west side of the grounds!

Stevens Concessions: Craving for a Chicago-style porkchop sandwich. How about a Philly steak or Louisiana Cajun sausage? You'll find them all at the back of the Miller Oasis.

Be sure to pick up your PrideFest program at the gates for a complete listing of food vendors.

Sponsors

PEPSI RETURNS AS PRIDEFEST SPONSOR FOR GARDENS AREA

Pepsi is a sponsor of thousands of events nation-wide, including many in the Milwaukee area. This is Pepsi's second year as a sponsor of PrideFest, and the Pepsi banner will be proudly displayed over the Gardens Area. Bill Robinson, Pepsi Representative, made a commitment to PrideFest before the proposal was even received.

The Gardens Area features dance groups such as the Shoreline and Cream City Squares. Shoreline is the midwest's premiere LGBT performance dance group. Since 1992, Shoreline has planned charitable and social events, providing the community a safe country & western environment. The Cream City Squares is a square dance club of healthy, active, fun-loving people. Both groups will demonstrate basic dance steps and then invite audience participation.

And when you have a thirst, be sure to cool it with any of the Pepsi products available at many food outlets on the festival grounds.



Safety First!

HINKS SECURITY BELIEVES SAFETY AND SECURITY IS EVERYONE'S BIGGEST CONCERNS AND WE'D LIKE TO HELP.

SECURE YOUR HOME AGAINST, BREAK-INS, FIRE AND BASEMENT FLOODS WITH A NEW HOME SECURITY SYSTEM.

FREE Home Security System!*

Free system includes keypad, motion sensor, master control panel, up to 3 door contacts, alarm and battery back-up

CHOOSING A HOME SECURITY SYSTEM HAS NEVER BEEN EASIER!
TO SET AN APPOINTMENT FOR YOUR HOME EVALUATION, CALL:

HINKS SECURITY

1-888-565-2477

*Working contract and credit approval required. Starting as low as \$29.95 per month. Other restrictions may apply.

This is NOT your father's square dancing.

Cream City Squares is Milwaukee's LGBT square dancing club.

- Open to both men and women (single or couples)
- Join a growing gay activity (coast to coast)
- Enjoy high energy dance styling (great exercise)
- Meet fun active people outside of the bar scene
- Dance either the male or female position (or both)
- Wear casual dress (leave your crinolines at home)
- Travel to other cities for dance weekend events

Please come and join us at the PrideFest Garden Area
Saturday 5-8 PM or Sunday 3-6 PM
(beginners are welcome)



414-445-8080

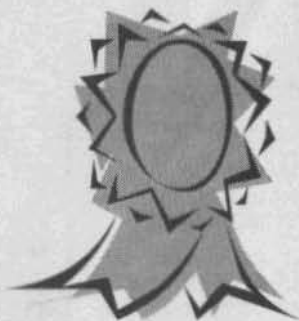
e-mail: Don_Dilges@juno.com
www.fagsdc.org/creamcitysquares

Visit our booth
in the exhibitor area
for more information

Awards

PRIDEFEST AWARDS

By Jamakaya



This year, PrideFest received a record number of nominations for its annual awards. The result is a record number of awards to organizations and individuals who have done important work for the LGBT community. The winners profiled below have been asked to serve as marshals for the Pride Parade on Friday night, June 9. They will receive their awards in a ceremony at PrideFest that night.

The **Community Service Award** is presented to individuals or organizations who have made exemplary contributions to the LGBT community. This year's recipients are Justin Lockridge and the Possum Queen Campaign.

Justin Lockridge is just 20 years old, but the Community Service Award recognizes the critical role he played in establishing Project Q, the program for LGBT and questioning youth based at Milwaukee's LGBT Community Center. Project Q, run by and for youth, provides social activities, meeting space and support for LGBTQ individuals ages 15-24.

"We saw the need for youth to organize things on their own behalf and so decided to start our own group," Justin explained. "I feel it's really because of all the people who became involved with Project Q that I'm getting this award." Justin is also serving as the Youth Area Coordinator for this year's PrideFest.

The **Possum Queen Campaign**, a uniquely queer beauty/talent/drag/camp/fundraising competition, has been spreading hilarity through Milwaukee's LGBT community for ten years now and raising tens of thousands of dollars for AIDS services in the process. Rarely has community service been this outrageously funny! In the campaign, contestants compete to raise the most funds for AIDS care. This they do through special events, direct solicitations, begging, borrowing and, well, just about any money-making gimmick that's legal! It all climaxes with the Possum Queen Show at PrideFest where contestants entertain the crowd who appreciatively toss more money on stage (or into the garters of the dazzling divas). The contestant bringing in the most money is crowned Possum Queen. PrideFest says of this award: "Congratulations, Possum Queen organizers, for your unselfish, entertaining efforts, and God Save the Queen!"

The **Stonewall Award** goes to individuals or organizations that have demonstrated the spirit of the Stonewall Riots by fighting to bring about change for the benefit of others. Usually their fight begins as a personal crusade against an injustice, but often leads to a far-reaching impact for the good of the community. This year's honorees are Rev. Joe Ellwanger, Susan Cook, Patrick Flaherty and Dignity/Milwaukee.

Rev. Ellwanger is the much-loved pastor at Cross Lutheran Church on Milwaukee's west side. Over the past 30 years, he has led his congregation in community activism, especially championing civil rights causes. In 1990, Cross Lutheran became a "Reconciled in Christ" congregation, fully accepting of its gay and lesbian members. Rev. Ellwanger has conducted many commitment ceremonies between



Photo by Doug
Krimmer
PrideFest '99

Continued on page 38

same-gender couples. He has spoken out publicly in support of LGBT people, their families and their rights. He presides over an annual "Coming Out" service at Cross, and he drives the church's van in the Pride Parade every year.

"I'm delighted and humbled to get this award," he said. "Since Cross Lutheran became a Reconciled congregation, we have grown and been enriched by the presence of our gay and lesbian members. It has been a wonderful journey."

In 1982 or '83, **Susan Cook's** roommate took her to her first meeting of Grapevine, a lesbian social group. "I was very excited about meeting and getting involved with people like myself," she recalls. Susan was soon attending weekly meetings, helping with potlucks and organizing camping weekends at Point Beach. "I got the organizing bug and never stopped." In 1988, she organized gay and lesbian support for Jesse Jackson's presidential campaign, and the next year she became a founder of the Lesbian Alliance. She joined the Pride Committee back in 1987, worked for the festival through its many years of growth, and served as Co-Director of PrideFest from 1996-98. She now serves as its Marketing Director.

"I believe strongly that we all have to work on our own behalf - nobody's going to do it for us," Susan says. "We need to be informed and vigilant and active. That's what Stonewall was all about. I'm grateful for this recognition."

Patrick Flaherty has been active for about ten years, ten very busy years. "I've always been a political person," he says. Patrick started organizing in college and then got more deeply involved with ACT UP and Queer Nation. In 1996, he became involved in the fledgling effort to establish the LGBT Community Center in Milwaukee and contributed mightily to the cause. The following year he co-founded the Domestic Partnership Task Force, which succeeded in getting the city to create a Domestic Partners Registry. He continues his activism on the DP Task Force and as a board member of the Political Action Committee of the Human Rights League.

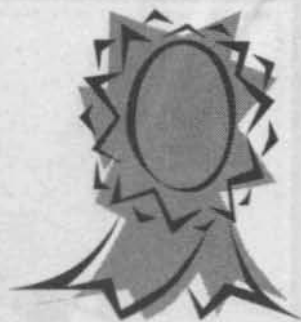
"The support we got from all sectors of the community for the DP Registry was so satisfying," Patrick says. "To have that great experience and then get an award for it is really fantastic. What a nice community Milwaukee is to work in!"

Dignity/Milwaukee, a group for gay and lesbian Catholics seeking to integrate their spirituality and sexuality, was founded in 1975. Dignity meets the second Sunday of each month in the chapel connected to St. Pius X Church in Wauwatosa. There is a liturgy at 6pm with a meeting afterward. The group hosts socials and occasional retreats and works with other liberal Catholic groups like Call to Action to educate and reform the church.

"There's more acceptance of gays and lesbians in the Catholic Church than people might expect," according to Donald Dilges of Dignity. "Many times it depends on the support of the local bishops. A lot of parishes are more accepting now, certainly more than 25 years ago, and we think some of that is due to the influence of Dignity. We believe it's important to work for change inside the church. We appreciate this award because it recognizes the work we've been doing for quite a long time."

The **Lifetime Achievement** Award is presented to an individual who has demonstrated ongoing leadership and commitment to the LGBT community. Past winners of this award have been instrumental in changing the course of our community's history. This year's winners are **Michael Lisowski** and **Gary Hollander**.

Michael has been active in Milwaukee's LGBT community for more than 20 years. In 1979, he helped establish Gay Youth Milwaukee. He served on a Task Force which succeeded in passing policies within the Milwaukee Public School system pledging safety and non-discrimination toward LGBT students. In 1996, he helped launch the Gay Youth Wisconsin Hotline. In addition to his commitment



CECE PENISTON TAKES CENTER STAGE SATURDAY NIGHT

Dance club diva CeCe Peniston will be at PrideFest on Saturday, June 10, taking center stage in the Miller Oasis at 9:00pm.

Peniston was only 21 years old when she and Felipe "DJ Wax Dawg" DelGado produced her first single, *Finally*, which became an instant dance club hit in the US. By the fall of 1991, *Finally* began its rise on the pop and R&B charts and became a Top Five single in Great Britain. With her song climbing the charts, Peniston headed into the studio to record a full album. *Finally* would eventually reach the Top Five of the pop, R&B, and dance album charts and earn gold certification.

Peniston's next hit, *We Got A Love Thang*, rocketed to Number One on Billboard's Club Play chart within a month of its release. With another single on the charts, Peniston began a year of touring clubs and small theaters in the US and abroad. While on tour she saw *Inside That I Cried*, *Crazy Love*, and *Keep on Walkin'* join the list of hits from her debut album.

In 1993 she released *Thought Ya Knew* on A&M Records, along with the first single *I'm in the Mood*. "I guess that title tells you where I'm coming from with the new album," Peniston stated in her A&M biography. "It's like I thought ya knew I could do it, that I was coming right back at ya, real and honest."

In 1995, Peniston began work on *Movin' On*, a detour from her prior work in the pop genre. She wanted to explore other creative aspects of music. She felt R&B was a part of her spirit, and decided to tackle that aspect. Since then she also released the single *Nobody Else* in 1998.

Besides the work on her own albums, Peniston contributed to Columbia Pictures' *Ready To Wear* Motion Picture soundtrack. She has appeared on television shows such as *The Rosie O'Donnell Show*, *Showtime at the Apollo*, *Access Hollywood*, *Jay Leno*, *Arsenio Hall*, *Regis and Kathy Lee*, *Vibe*, *BET with Donnie Simpson*, and *MTV with Downtown Julie Brown*. Recently, Peniston toured with Peabo Bryson, Grace Jones, Tasha Scott and Tony Terry in **THE WIZ**.

The best is yet to come. Besides making great music, acting is another creative area CeCe intends to explore. She would love to move into the area of motion pictures.

One thing is for sure: CeCe Peniston will continue to make her mark on the world over as a talent extraordinaire. PrideFest welcomes her to Milwaukee!



LISA, LISA BRINGS LATIN RHYTHMS

Let the Latin rhythms wash over you on Sunday, June 11 at 8:00pm.

In spite of the fact that Lisa Lisa is the voice behind so surprisingly little is known about the Puerto Rican native of the world of Latin hip-hop and dance music. Born Lisa Velez, were raised by a single mother in Manhattan's most well-known neighborhood, the age at which she met legendary producers Full Force (a matter of speculation, however, is the success that Full Force (who recorded one of rap's most famous songs, *Roxanne*, in divas who recorded a response to the inflammatory original).

As the front woman for **Full Force's Cult Jam**, Lisa Lisa with *I Wonder if I Take You Home*. Released by Full Force plenty enough of a stir to secure the group a recording contract with **Cult Jam with Full Force**, built upon the success of *I Wonder Out*. Covered by R&B girl-group **Allure** in 1997, *All Cried Out* charting single and catapulted the album to platinum status release, **Spanish Fly**, also achieved platinum sales with keeping **Cult Jam** on the charts and making Lisa Lisa a

A two-year recording gap resulted in the release of more R&B feel, while still maintaining the funky beats of 1991, the group released their final album together, another successful hip-hop/dance outfits. Entitled, *Straight Outta Her* one of their most consistent efforts ever. With production credit and-coming production duo Robert Clivilles and David Cole, and *Love Will Get Us By* offered the dance floor-ready tracks

Though not a vocal dynamite, Lisa Lisa more than holds realism to slower songs, such as *Where Were You When I* same Every Girl quality that made a hit out of *All Cried Out*. *Sensuality* exhibited yet another - more sensual - side of Lisa experimentation that would not fully manifest itself for another three years.

Having relinquished her position as vocalist for Cult Jam Lisa Lisa was left to her own devices, a prospect that frightened her some. "Someone said it was all over for me," she explained in Lucy O'Brien's *She Bop*, "I cried. But then wipe your eyes, walk out there and figure how to kick those people in the ass. It was time for Lisa to come out on her own and grow up."

And grow up she did. In 1994, Lisa Lisa returned with her first solo effort, *LL77*, a more sensual and less dance-oriented production than her collaborations with **Cult Jam** and Full Force. *LL77's* singles - *When I Fell In Love* and *Skip to My Lu* - barely scratched the surface of the playfully veiled sensuality of tracks such as *Covers* and *Acid Rain*.

Though Lisa Lisa has not released a follow-up to her debut project, she is neither inactive nor forgotten. As a participant in the 1999 *Billboard Magazine* dance music conference in New York, Lisa Lisa assumes the mantle of dance music authority and legend. As one of the first Latin divas to gain international notoriety performing English language material in the rock era, Lisa Lisa is truly a marvel. By incorporating elements of rap, hip-hop, dance and pop into her own personal musical landscape as a Puerto Rican resident of one of New York's toughest ghettos, she has achieved what many have only attempted. While her many chart-topping singles have earned her a permanent place within the lexicon of American music, it is her frankness, pride and beauty that mark her a diva.

YTHMS TO PRIDEFEST

Friday, June 11 as Lisa Lisa takes the spotlight on the Miller Stage

ice behind some of the 1980's most memorable songs, can native of New York's Hell's Kitchen who would one day rule on Lisa Velez, it is said that Lisa, Lisa is one of ten children who most well-known Latin borough. Also a subject of conjecture is Full Force (with reports ranging from sixteen to twenty). Not a that Full Force had already achieved with artists such as Utfo s, *Roxanne, Roxanne* and the real Roxanne (one of many rap atory original).

am, Lisa Lisa enjoyed a string of chart-topping songs, beginning Full Force productions, *I Wonder if I Take You Home* created g contract with Columbia Records. Their debut album, **Lisa Lisa & ss of I Wonder if I Take You Home** with the ballad *All Cried 1997, All Cried Out* earned **Lisa Lisa & Cult Jam** their second o platinum status. Released in 1987, their sophomore im sales with singles such as *Head to Toe* and *Lost Emotion* g Lisa Lisa an international star.

ie release of *Straight to the Sky* which featured a decidedly funky beats of **Cult Jam** and **Full Force** were famous. In together, ending a six-year run as one of the world's most ght *Outta Hell's Kitchen*, **Lisa Lisa & Cult Jam's** swan song is production credits split equally between Full Force and then-up David Cole, songs like *Like the Beat Hit 'Em, Let the Music Play*, r-ready tracks which fans had come to expect.

re than holds her own within her genre, while bringing emotional *You When I Needed You* and *Don't Say Good-bye*. It was this *All Cried Out* several years before. *You + Me = Love* and i- side of Lisa Lisa and foreshadowed an inclination towards self for another

t for Cult Jam, ct that over for me," ed. But then you o kick those out on her own

Lisa Lisa L77, a more oduction than d Full Force. e and *Skip to My the playful Acid Rain.* o her debut solo s a participant in ference in New music authority ain international in the rock era, ments of rap, musical f New York's y have only s have earned erican music, it er a diva.



SOMETHING FUNNY ABOUT MICHELE

As long as Michele Balan has been performing, she has been popular with gay audiences. She has been a regular on the gay and lesbian leisure circuits, gay men's cruise lines, women's festivals...lots of jobs on the water or in the mountains. Wherever she performs she is asked back.

The strong feeling that gay and lesbian audiences have for Balan reciprocated on her part. An out lesbian who has had opportunity to lots of cross over gigs in mainstream, straight venues, Balan cherishes her gay audiences, men and women alike, because they get it... and they get her.

"Straight people in the same places are just not as hip." Balan says, echoing the sentiments of many other performers. "I hate to say that but its true. Sometimes, playing for straights is just like, you know, wind in the air. Gay audiences, they read, they know..."

Last spring, Balan appeared as one of the six headliners at the Dinah Shore Golf Weekend in Palm Spring, the premiere event on the women's party circuit. The others on the bill? Them you might have heard of... Kate Clinton, Roseanne, Margaret Cho, Lea DeLaria and Wynona Judd. Of course, you can't judge Balan just by the company she keeps, but the star caliber of the bill gives you an idea of how highly promoters and producers consider her. The Dinah Shore Weekend audience is pretty demanding.

"It's so funny, it's supposed to be a golf weekend," observes Balan. "I'm at the airport and like 6,000 women get off the plane, and not one golf club. Is anyone golfing?"

It seems a shame, as funny and winning and hard working as she is, that everyone has had more exposure to Michele Balan. Very early on, Balan got a taste for performing. Winning audiences came naturally to her. "I used to do Bette Midler," she recalls. "My friends talked me into entering a talent contest with all these drag queens. They were doing Diana Ross, Shirley Bassey, and there's Michele doing Bette Midler. But I won the contest."

"My absolute goal is to have a big TV show, earn enough money and retire." Balan bottomlines. "Look, we all want that. I'm open to anything, writing, acting in a sitcom, creating a sitcom. I am at a point in my career I do what I can. If it happens, it happens."

"And if it doesn't happen," she sighs, "I can always open a Jewish gift shop."

Be sure to catch Balan's show at PrideFest on Saturday night at 8pm at the Miller Oasis.

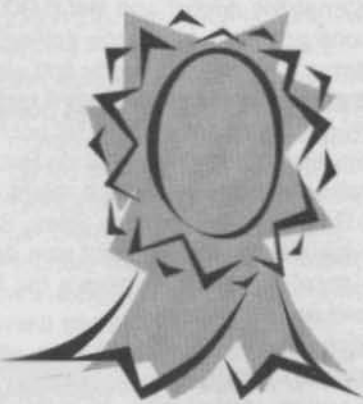


Awards

to youth issues, Michael was an active member and officer in Black and White Men Together for many years. He has worked for the AIDS Resource Center of Wisconsin and participated in HIV/AIDS and of "The Queer Program" on public access cable. He became involved with local Pride festivals in the late 1980s and, this year, is Co-Director of PrideFest.

"I like to think this award is really for the gay youth," Michael said, suggesting that his work for gay youth has been his most important contribution. "It recognizes the struggles they've gone through, the silent battles they've had, and the determination they've shown."

Gary Hollander came out at age 16 and says he's always been out since then, whether at school, work or in the community. A psychologist, he wrote his dissertation on gay men and depression. In 1973, he facilitated gay identity groups, where men could come and sort through their feelings. In the 1980s, he was instrumental in starting "Commitment," the annual roundup of local LGBT 12-step recovery groups. In his capacity as co-chair of the



Wisconsin HIV Prevention Planning Council, Gary started a youth development program called "Diverse and Resilient" and secured grants from the Centers for Disease Control which have fostered the growth of dozens of LGBT youth groups statewide. He was a founder of the Human Rights League and is currently Chair of the Wisconsin AIDS Fund.

"I've tried to start things that can sustain themselves into the future and bring about continued growth for our community," Gary commented. "I'm only 51," he said of his Lifetime Achievement Award. "You ain't seen nothing yet!"

Entertainment

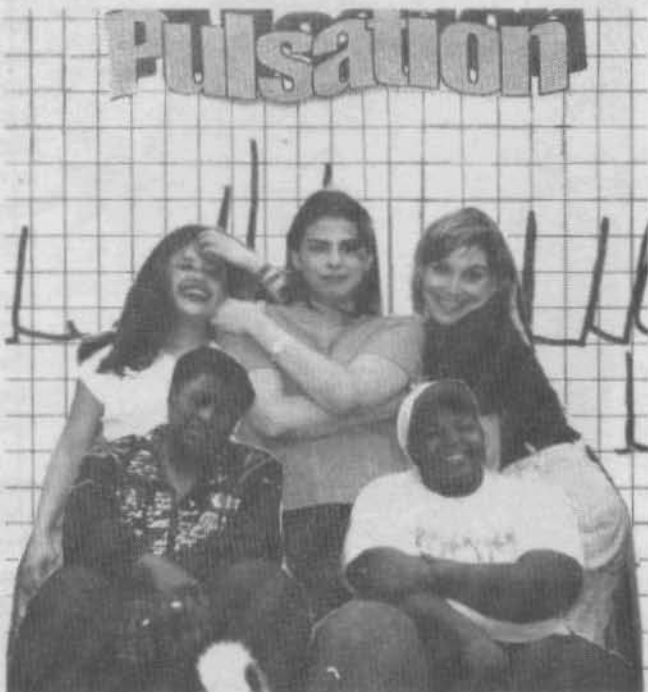
PULSATION'S BRING CHICAGO STYLE ENERGY

Chicago's dynamic all-women multiethnic band, Pulsation, will be rocking PrideFest on both Saturday and Sunday in the Miller Oasis. Catch both shows, 2:00pm and 4:00pm respectively, because you never see the same act twice. Our sisters to the south have an uncanny ability to get even the most shy festival-go'er on his or her feet, rocking out to their infectious music.

Pulsations plays a variety of rock, R&B and pop standards from *If I can't have You*, and *Freeway of Love* to *Ain't Too Proud to Beg* and *Lady Marmalade*. They also perform original works.

The band includes lead vocalist and trumpeter Denisa Clark, vocalist and dancer Ceydi Mendoza, keyboardist and bassist Rhonda Dennis who also writes some of the band's music, vocalist and guitarist Tracey Sweeney, and Shelle "Drummer Girl" McGugin.

Pulsation has been performing for almost eight years at clubs and benefits throughout the Midwest. We know many PrideFest attendees will be thrilled to have them back.



Entertainment

SOMETIMES Y MAKES 4TH APPEARANCE AT PRIDEFEST

Sometimes Y is making its fourth appearance at PrideFest this year, playing on the Miller Stage, Saturday evening, June 9 at 7:00pm.

Sometimes Y is the collaboration of four Milwaukee musicians connected by blood, marriage and longtime friendships. Singer/songwriter Laura Nigro teamed with guitarist Kevin Roberts to create core arrangements, then sought the talents of Rob McWilliam on bass and keyboards and

drummer/ percussionist Jeff Gaudes. Vincent Gaudes produced and recorded the ensemble, whose sound is a blend of orchestral and organic elements that create a soulful listening experience.

Sometimes Y released its first CD last year, *I Am*. Critic Dave Luhrssen commented: "Their relatively quiet music strangely echoes some of the progressive rock of the mid-1970s, especially the orchestral textures and unusual compositional symmetries of such British groups as Renaissance. Singer Lora Nigro lends a fragile but resilient presence to the proceedings, and her lyrics infuse the songs with a thoughtful intelligence."

Check out these Milwaukee originals.



Photo by Doug Krimmer, PrideFest '99

Milwaukee's newest HOT spot!

Club
BOOM

625 S. 2nd St. • 277-5040

shake your pride.

FIREWORKS – LIGHTING UP THE SKY WITH PRIDE

All eyes will look to the skies and the air will be punctuated with long “ooooohs” and “ahhhhs” for the spectacular PrideFest fireworks display planned for Saturday night, June 11 at approximately 10:00pm after the main stage show, and then again when a final volley sends off the crowds on Sunday at 9:00pm. Rockets will be launched from the island in Lake Michigan just east of the festival grounds, so the best viewing spot will be at the lakefront. The rain date is Sunday night.

The tradition of festival fireworks started in 1995, and PrideFest was the first pride festival in the country to have them. Since then, following Wisconsin’s lead, two more festivals have initiated their own fireworks displays.

The Miller Brewing Company will underwrite the costs of this year’s display, which should last about 15 or 20 minutes. Wisconsin’s own Bartolotta Fireworks Co., one of the nation’s foremost fireworks and pyrotechnic producers, will create the fireworks, design the show, and light the fuses. This is the same company that produces the astonishing July 3rd fireworks display on Milwaukee’s lakefront.

Over the years some aspects of the fireworks show have remained the same, but some have been refined. It takes months to plan a fireworks display, starting with the explosives themselves. Because Bartolotta’s makes its own fireworks, it designs each show to fit the customer. In PrideFest’s case, this includes bright rainbow colors and continuing attempts to create pink triangles. Bartolotta’s also strives to meet the standing request for plenty of loud explosions. Ultimately, the show builds to a climax that will thrill the eyes and ears of spectators.

Enjoy! And feel free to “oooooh” and “ahhhhh” to your heart’s content!

Photo by Doug Krimmer PrideFest '99



BRING FOOD, GET IN FREE

This year, PrideFest will sponsor its third food drive for the Hunger Task Force of Milwaukee. You can get free admission to the festival if you bring four or more non-perishable items of food to the gate from 5:00-9:00pm Friday and Noon-2:00pm Saturday. Over 1.5 TONS of food have been collected at PrideFest during the past two years, and the community is encouraged to continue its generosity.

The Hunger Task Force will distribute the food to the Emergency Food Pantry Network, comprised of 90 pantries, mostly in churches, which are staffed by more than 700 volunteers and serve about 44,000 people each month in the greater Milwaukee area.

Preferred food items are: Canned tuna, canned and dried beans, peanut butter, macaroni and cheese, canned stews, meat, and chili. Canned fruits and vegetables such as corn, green beans, and peas. Boxes of corn flakes, oatmeal, saltines, and muffin mixes. All soup products, canned or packaged. Pasta, rice, and boxed potato mixes. Powdered and canned milk. Baby formula of any type is always in need.



**HUNGER
TASK
FORCE**
of Milwaukee

SINCE 1974

HUME LAW OFFICES



Kathleen E. Hume, Esq.

Specializing in Estate Planning, Partnerships & Living Wills

Protecting & Acknowledging the Rights of Wisconsin’s LGBT Families

529-2129 fax: 529-9545
5665 S. 108th Street
Hales Corner, WI
53130



STONEWALL GIVES PEOPLE A CHANCE TO TALK

PrideFest is proud to present an opportunity for members of the community to share their thoughts and words with others through the Stonewall Tent. This space is set aside for anyone to talk about just about anything, from financial planning, health care, political strategies, prejudice within the LGBT community, and services offered by organizations.

Use of the Stonewall Tent is free.... PrideFest provides the space and sound system. The community provides the rest. Presentations can run from 30 to 60 minutes, and table space is available for publications or business cards.

At time of publication, there were still a few time slots available for others. If you are interested in sharing your message, contact the PrideFest Stonewall Stage Coordinator, Russ Reiter, at 414-645-3378.

CURRENT LINE UP FOR THE STONEWALL TENT:

Saturday, June 10

- Noon Fighting for Your Spiritual Life, Cory Lieberman, Chapel of Hope
- 1pm Pride In an Age of Shame, Dawn Kruebger, MSW
- 2pm Fighting the Radical Right, Susan Matulis, Wisconsin Research Center
- 3pm Hate Crimes and Our Community, Ralph Navarro
- 4pm Are You Gay? Are You Straight? Are You Sure? Steve Butler and Nikki Schlaishunt, Bi Definition
- 5pm Open slot
- 6pm Open slot

Sunday, June 11

- 1pm Domestic Partnership, Patrick Flaherty
- 2pm Men of Color, Kelvin Adkisson, AIDS Resource Center of Wisconsin
- 3pm Dignity Couples Ministry, Joe Zopp, Dignity
- 4pm Safer Sex Game Show, Brian Bacon and Mike Goertz, AIDS Resource Center of Wisconsin
- 5pm Open slot
- 6pm Open slot

PrideFest 2000 Advance Ticket & Button Outlets

AfterWords Book Store /Espresso Bar

2710 North Murray
Milwaukee, WI 53211
(414) 963-9089

Designing Men & Womyn

1200 South First
Milwaukee, WI 53204
(414) 389-1200

This Is It (Buttons only)

418 East Wells Street
Milwaukee, WI 53202
(414) 278-9192

BARB PETERSON: LOGO ARTIST EXTRAORDINAIRE

Barb Peterson, a Milwaukee area graphic designer, created the elegant logo for this year's PrideFest celebration just as she has created the logos for PrideFest for the previous seven years.

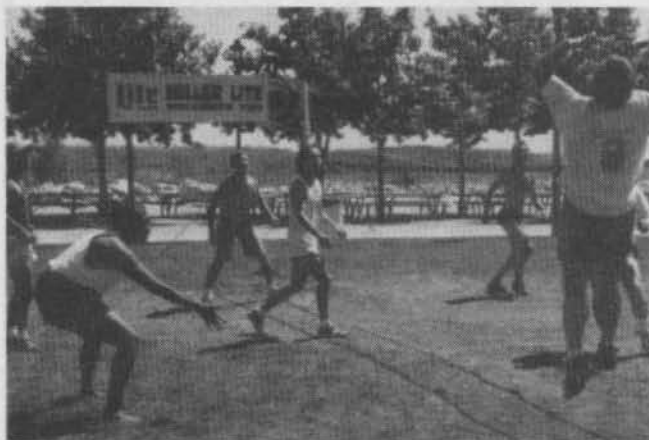
"We are incredibly fortunate to have such a talented artist working with us," PrideFest Co-Director Christine Klein said of Peterson. "The images she creates always match the PrideFest theme just perfectly."

Barb first designed the PrideFest logo in 1994, the year of the 25th anniversary of the Stonewall Rebellion. Each year since, she has been informed about the designated theme/slogan by the Pride Council and gone to work on her artistic renderings. She presents the Pride Board and Council with her work and they make comments and, ultimately, give it the thumbs up.

"It's been great working with PrideFest," Barb says. "It's an event I really support wholeheartedly. Hats off to all the committee members and volunteers who keep it alive."

Barb is part owner of Gallery H2O at 907 South 1st Street. Feel free to stop by and view more of her work.

Photo by Doug Krimmer
PrideFest '99



STONEWALL MADE NATIONAL LANDMARK

The Stonewall Inn was designated a national landmark in March 1999. The New York bar is the first gay site to be given that status by the US Department of the Interior. A National Historic Landmark designation is given only to those places that are meaningful to the history and culture of the United States, and only three percent nominated receive that designation.

Built in 1846 as a horse stable, the Stonewall was a gay bar in 1969. Because serving liquor to gays was illegal at that time, the bar was unlicensed and subjected to raids by New York police. In June, a police raid of the bar provoked a riot that launched the modern LGBT civil rights movement. Before 1969 there were fewer than 200 gay organizations around the country. A year after the riots, there were over 1000 organizations nationwide.

Get
interactive...
www.arcw.org

ARCW

AIDS RESOURCE CENTER OF WISCONSIN

HIV information and
opportunities updated
regularly.

2000 Proud Crowd

DIAMOND LEVEL

Elaine & Pat
Downtown Auto Body
Andy Banaszynski & Ron Benner
James A Berger & Timothy S Talsky
Boot Camp Saloon
J Goldberg
Jerome Higgins
Stephanie Hume
C A Klein
Rich & Keith Kurde-Ruff
Jim McFarland & Ed Aguirre
Tom Mielke
Paul Nowak & Mark Straight
Dawn Schaefer & Linda Le Gros
Andy Schaidler & Brian Buchberger
James A Skiba & Tom D Kroscher
Robert Starshak & Ross Draegert
Cornelius Sterling
Richard Strong & John Grant
Gary & Ross
Ross & Erv Walker-Uecker

PLATINUM LEVEL

Cindy & Mort
Mark P Behar, PA-C
Ellen Giesler & Amy Cicero
David Glenn
Dan Lagerman
Lil Lau
George Litts & Kevin Quader

Ralph F Navarro
Anonymous
Patrick E Prudlow
Cristine Schirmer & Kim Brunner
S & M
R Zizzo & R Hicks

GOLD LEVEL

Jane Baudelaire
Ted Berg
Richard Braatz & Don Dilges
Gerald A Brown
Lori Buss & Debbie Wright
Derik Chapman & Max Barnett
Susan K. Cook
William E Edwards & Morris Plath
Ted Eslinger & Todd Liebsch
Aric Fisher & Keane Weinreich
Dan Hahm
Beth & Sue Hancock-Nevala
Cliff Heise
David Heuer & Jim Chiolino
Mary Rita Hurley & Gwen Kibbe
Tom & Vicki Kaluzny
Lori M Kreklow
Patrice Krukowski & Jewel Fipps
D A Leonard
Sharon Mahos
Anonymous
Kathy Miller & Julie Berkopec
Sylvia Odegaard & Donna Winker
Jacque H Reidelberger

2000 Proud Crowd

Mark Hagner & Greg Young
Terrance J Rohloff
Todd Siefert & Mark Groeschel
Tony & Del
Jon Tschachler
Craig Waltress
Patricia Boehn & Cheryl Neils

SILVER LEVEL

Anonymous
Chris R Briere
Monica Cassidy & Sheri Goldberg
Milw Co Treasurer Dorothy Dean
Ann Dorschel & Dawn Griffin
Anonymous
Laurie Fountain
Joe Frazier & Robert Woodman
Anonymous
Elna Hickson
Stephanie Knuteson & Barb O'Connor
Roger krawiecki
Rita LeGros
Anne Maloney
Donald C Millbrook
Anonymous
Anonymous
Lowell Peterson & John Goff
Jeannie Polinske
Wendy & Elaine Radish
Anonymous
Craig Thelen & Joe Karpfinger

BRONZE LEVEL

Mark & Jerry - Foreven and a Day
Brian Akey & David Van Winkle
Chris, CJ & Jacki
Anonymous
Chuck Brotz
Gerry Coon & Steward Dempsey
Chuck Ellingson & Brian Mickelson
Joshua Feyen
Patrick Finn & Mike Weber
G/L Community Center Trust Fund
Jerry Gantner & Ron MacDonald
Bill Hanel
Ron Helizon
Gregg Hutterer & John Murges
Julie Kleppin & Holy Loveland
Anonymous
Anonymous
Margaret Pafahl & Linda Plagman
Anonymous
Barb Robertson & Joel Ottoson
Lee Santkuyl & Allan Kohl
Nikki Scott Schlaishunt
Anonymous
Randy Torkelson
Brigitte J Vojcsik
Jerry Warzyn & Brian Rochon
Wild Rose Guest House
Anonymous
Anonymous
Anonymous

WHEELCHAIR ACCESSIBILITY GUIDE

In compliance with the 1990 Americans with Disabilities Act, the property management of Henry W. Maier Festival Park is striving to make the festival grounds barrier-free and wheelchair accessible. Persons with physical challenges will find the following accommodations at PrideFest:

Parking: Accessible parking spaces are located through Summerfest parking lots. Lots can be found along Harbor Drive and Chicago Avenue. Vehicles must have disabled plates or a permit to park in these lots. All parking is on a first-come, first-served basis. Fees vary.

Drop Offs: During the festival, drop offs can be made at the Mid-Gate area, located at the intersection of Harbor Drive and Chicago Avenue. Wheelchairs and strollers can be taken through the wide gates located on the far right-hand side.

Wheelchairs & Stroller Rental: PrideFest is sponsoring the wheelchair and strollers this year, making them available to users free of charge. Wheelchairs and strollers are available at the Milwaukee Journal Sentinel Information Booth directly across from the Mid-gate. Users will be required to provide a valid picture ID or driver's license and leave a \$20 deposit for each

wheelchair and/or stroller checked out. There are a limited number of wheelchairs and strollers available therefore they are provided on a first-come, first-served basis.

First Aid: During the festival, the First Aid station will be staffed by volunteers from the American Red Cross. The First Aid Station can be found on the west side of the grounds just south of the Miller Stage. In case of extremely hot temperatures, "mist stations" will be available for a quick cool-off.

Drinking Fountains: Drinking fountains are located outside each restroom area and are accessible to wheelchair users.

Drinking fountains can also be found near the Children's Play Area.

Stage Area Seating: Stage areas throughout the festival grounds are supplied with accessible picnic table seating where marked. A designated viewing area for wheelchair users is available at the Miller Oasis.

Telephones: Wheelchair accessible public telephones are located outside each restroom area. To accommodate the hearing impaired, many of the phones have amplified handsets. In addition to this service, a Telecommunication Device for the Deaf (TDD) is available near the First Aid Station.

Milwaukee World Festivals Inc. welcomes comments and ideas on accessibility issues. You can reach them by calling 414-273-2680 or on-line at <www.summerfest.com>.



Photo by Doug Krimmer
PrideFest '99

PRIDEFEST 2000 COUNCIL MEMBERS

TED BERG, Vice President of PrideFest and Family Day Coordinator – Ted has volunteered with PrideFest since 1993. He became a member of the Council in 1997 and was elected Vice President in 1999. Ted is an amateur clown who has recruited other clowns for the festival. He is also a minister and is Director of the Ecumenical Service scheduled for Sunday, June 11. "Being Gay is a special gift," says Ted. "It should be celebrated, nurtured, and loved. PrideFest is my simple way of returning the love the community has given me."

SUSAN COOK, PR and Marketing – Susan was involved with the original MLGP Committee back in 1988 and 1989, and later joined the PrideFest Council in 1995 after moving back to Milwaukee. She served as co-director from 1996 through the 1998 festival and currently serves as PR & Marketing Director. "Being on the PrideFest planning committee is some of the hardest work I have ever done as a volunteer," says Susan. "It is also the most rewarding."

RICK FINGER, Parade Coordinator - Rick has been coordinating the Wisconsin Pride Parade for seven years, planning the route, getting the permits, and — the biggest challenge — lining up the lively parade participants so the parade can step off in an orderly manner. He's looking forward to the Friday night parade.

SHERI GOLDBERG, Volunteer Coordinator – Sheri became involved with the LGBT community first through the Sherman Park Rainbow Association. She first became a member, then served as co-chair two years later. Sheri loves being part of a neighborhood group. She volunteered for the AIDS Walk, and later became more involved by serving as the Route & Security Chair. "There is nothing I wouldn't do to help people in need," says Sheri. PrideFest is also important to her. "To me, PrideFest is our community coming together while we share and enjoy the company of family and friends in a safe space."

CHRISTINE A. KLEIN, Co-Director and Administrator – Chris started with PrideFest in 1995 as the Treasurer and was elected Co-Director in 1999. She serves as the initial point of contact for all callers seeking information about the festival, entertainers, volunteers, and vendors. "I enjoy working with the Pride Council and the community in producing the festival," she says. "Planning PrideFest takes a year to do. At times the work can be very time-consuming and stressful. However, during the week of the festival, setting up the grounds and watching everyone pull together to make our dream a reality makes all the time and energy worthwhile."

LINDA LE GROS, Operations and Merchandise Coordinator – Linda joined the council in early 2000. Her responsibilities include the lay-out of the festival grounds, the placement of flags along the downtown streets, and the ordering of the official PrideFest souvenirs. Linda's involvement is "giving her a better understanding of the festival and what it does, and it gives me a chance to meet new people."

MICHAEL S. LISOWSKI, Co-Director and Marketplace Coordinator – Michael has been involved with PrideFest since 1993 and became Co-director in 1999. "PrideFest is the one time during the year that our entire community can come together and celebrate, young and old, white, people of color, men, women, singles and couples, gay and non-gay. To work so hard every year and see everyone else enjoy themselves is worth it." Michael has also spent many years working with Gay Youth Milwaukee and produces the local MATA television show, The Queer Program.

JUSTIN LOCKRIDGE, Youth Activity Area Coordinator – Justin was elected to the Council in November 1999. He is responsible for recruiting, planning and coordinating the activities within the Youth Area. Justin volunteered in the Youth Activity Area for the past two years prior to coming on board as coordinator.

PRIDEFEST 2000 COUNCIL MEMBERS

PETE MINNS, Beverage Coordinator – This is Pete's first year on the PrideFest Council. After being a volunteer in the community for a number of years and for PrideFest last year, Pete was recruited to the PrideFest Council last fall. His main reason for being involved? "I strongly believe in giving back to our community, and being involved with PrideFest is an important part of that," he says. Pete is active in being a three-year crew veteran for the Twin Cities-Wisconsin-Chicago AIDS Ride. "Each of us has an ability to make our world a better place," says Pete. "Giving my time and energy to make an event such as PrideFest happen is the least I can do."

DARREN PITTMAN, Entertainment Coordinator – Darren joined the PrideFest Council in 2000 and has the enormous challenge of recruiting, scheduling and coordinating a diverse entertainment line-up for the three day festival. Darren's first involvement with PrideFest began as an entertainer.

JOHN PRENTICE, Legal Advisor – John joined the Pride Council in 1996. He renders legal advice to both the Executive Board and the full Council.

RUSS REITER, Stonewall Stage Coordinator – Russ has volunteered for PrideFest since 1997, when he started clowning around at the first Family Day. He believes strongly that volunteering enriches the volunteer as well as those he or she serves "because as you give, you also receive."

DAWN SCHAEFER, Vice President and Treasurer – Dawn has been a volunteer for PrideFest for five years, having worked in the cash room since 1995. She was elected as PrideFest Treasurer in 1999 and the position of Vice President in 2000. Dawn, who has owned her own insurance agency for the past twelve years, brings with her a strong business background. When you get your beer tickets and change right away, it's because Dawn has ensured that all behind-the-scenes cash handling procedures are working properly.

SHELDON SCHUR, Secretary and Security Coordinator – Sheldon has been with PrideFest since 1993. During that time, he served as parade coordinator for several years. In 1999 he took on the duties of Security Coordinator where he manages the army of volunteers who assist in making PrideFest a positive experience for everyone. In 2000, Sheldon was elected to the position of Secretary for the organization.

DELBERT SLOWIK, Food Services Coordinator – Del's been involved with PrideFest since 1991. As a former bar owner, he had experience catering special events, and he used those skills to become involved with the festival's food management in 1994. He says he knows how to feed crowds delicious food with "limited funds, limited space, limited time, and limited help." His reason for involvement: "Just crazy I guess! I do feel a commitment to give back to the community at-large. It is an instilled family value."

JERRY SPILLNER, Food Coordinator – Jerry joined the council in 1999. The number one reason he wanted to be involved is "so that I could be a part of one of the most important festivals of the summer. I have worked in the food industry since I was 14 years old and am still doing it today. I work for a local hotel as set-up manager of the banquet area, which deals with food, beverages, and customer relationships."

Photo by Doug Krimmer



RAINBOW FLAGS ADD COLOR TO CITY OF FESTIVALS

Ever since 1995, PrideFest's flags have added both color and symbolism to Wisconsin's City of Festivals as the flags acknowledge Milwaukee's Gay, Lesbian, Bisexual and Transgender citizens. The Rainbow Flags say, "We are here!"

That tradition is going to continue through the generosity of those people who donate through the annual Proud Crowd campaign, PrideFest's major pre-festival fund raising event. This year, the funds raised through the campaign will be used to replace and maintain all of the Rainbow Flags along Milwaukee's downtown streets, most of which mark the route for the annual Pride Parade.

"The Rainbow Flags really generate a lot of emotional comments from people," said PrideFest Co-Director Christine Klein. "Last year while we were fixing one of the flags, two visitors from San Francisco stopped us and said they hadn't seen so many flags in any other town but their own. They said they felt like they were home — and we told them that they were."

Designed by Gilbert Baker in 1978, the Rainbow Flag is internationally recognized as the rallying banner of the LGBT community. According to its designer, each stripe represents a different aspect of life: Red is for Life; Orange is for Healing; Yellow is for Sun; Green is for Nature; Blue is for Art; and Violet is for Harmony.

When all costs are added, including flags, unfurlers, poles, holders, permits and contractor costs, each flag costs PrideFest just under \$150.

"Some members of the community are under the impression that the city buys and hangs the flags when in actuality this is all done by PrideFest," commented Co-Director Michael Lisowski. "But, we know how important it is to the community that we continue this tradition, and we hope people come through by contributing to the Proud Crowd campaign."

People have several donation levels to choose from starting at \$15. All contributors to the campaign receive the Pride Card which serves as a three-day pass to the festival. In addition to the premiums, contributors are also invited to a special Proud Crowd reception on Friday, June 9 at the festival grounds.

To receive a Proud Crowd brochure, visit the self-service area at the PrideFest office, 907 South 1st Street in Milwaukee, or call (414) 645-3378, or visit the PrideFest 2000 web site, www.pridefest.com.



Entertainment

MONTENEGRO PACKS THEM IN

Listen for the roar of the crowd on Saturday night at 6:00pm when Mia Montenegro steps up to the mic. This very popular performer packs them in, and you better arrive early if you want a chance to sit close to the stage because Mia's connection with her audience keeps the crowd on its feet

Montenegro is one of Wisconsin's top female singer/ songwriters and is ever popular at PrideFest. Mia delivers powerful versions of songs by artists such as Janis Joplin, Fleetwood Mac, and the Indigo Girls, as well as a huge list of her own original compositions. Her debut solo CD, *Somewhere in Between*, displays her versatility as a songwriter, from slammin' acoustic rock tunes to ballads — all complete with hook-laden melodies. She admits being strongly influenced by Melissa Etheridge and Cheryl Wheeler.

Mia played the coffeehouse circuit during her college days. She was a member of acoustic rock trio Suburban Gypsies, favored for their three-part harmonies and interaction with the audience. The group was nominated for a Wisconsin Area Music Award. As a solo performer, Mia has played at PrideFest, Summerfest, State Fair, Shank Hall and a number of clubs



throughout the state. If you have never seen her act, be sure to catch her this year in the Miller Oasis.

RONNIE NYLES RETURNS WITH CLASSIC COUNTRY AND ROCK

Ronnie Nyles, one of Wisconsin's best country/rock artists, is booked for PrideFest once again. This year, she's performing at the Miller Stage at 12 Noon on Saturday, June 10.

Nyles knew at age six she wanted to sing. She found early success in the country duo LadySmith, which won the Wisconsin Area Music Industry (WAMI) award in 1989 for Country Artist of the Year. She won the same award as a solo performer in 1990. After that, she joined the Sky Harbor Band, Milwaukee and Chicago's top country band.

Now, as a soloist, Nyles is doing a little bit of everything, going from Mary Chapin Carpenter to Wynonna to Melissa Etheridge. "Doing a solo act you have to be able to do a lot of different material to survive," she says. "So when I'm doing a country song, to some people it sounds country, but to other people — one of the best compliments I got was, 'We're not really into country, but we really like what you do.' It's appealing to a wider audience, basically."

She describes her own sound for original songs as "more diverse," drawing on a variety of influences from country to folk to classic rock



that she's been exposed to over the years. The stage show remains energetic. "I just can't seem to sit still when I'm on stage," she says. "When the music moves me, I have to go with it."

PrideFest, Inc.
Balance Sheet
For Year Ended December 31, 1999

Current Assets:

Cash in Bank and on Hand	\$47,072.00
Accounts Receivable	\$1,375.00
Furniture & Fixtures	\$7,327.00
Inventory	\$2,349.00
Prepaid Expenses	\$3,675.00

Total Assets **\$61,798.00**

Liabilities:

Firststar Bank Payable	\$938.00
Food Booth Deposits	\$145.00

Total Liabilities **\$1,083.00**

Net Assets:

Operating	\$(134,894.00)
Festival	\$195,609.00

Net Assests **\$60,715.00**

Total Liabilities and Net Assets **\$61,798.00**

PrideFest, Inc.
Statement of Activities
For Year Ended December 31, 1999

Revenue	Operating	Festival	Total
Festival Income	\$209,152.95	\$209,152.95	
Grant Income	\$29,000.00	\$29,000.00	
Fund-Raising Events			
Fund-Raising Income	\$17,021.34	\$17,021.34	
Fund-Raising Expenses	\$(8,978.70)	\$(8,978.70)	
Interest Income	\$1,283.29	\$1,283.29	
Total Revenue	\$9,325.93	\$238,152.95	\$247,478.88
Expenses	\$-	\$-	
Management and Supporting Services	\$48,804.58	\$-	\$48,804.58
Festival - Related Expenses	\$-	\$203,213.10	\$203,213.10
Total Expenses	\$48,804.58	\$203,213.10	\$252,017.68
Change in Net Assests	\$(39,478.65)	\$34,939.85	\$(4,538.80)

*Note: Audited financial statements are available upon written request.
Above information is based on our unaudited Financial Reports.*

VOLUNTEERS ARE WELCOME

Volunteers make PrideFest happen!

We pride ourselves on the fact that PrideFest is a volunteer supported event. Last year, nearly 1,000 people donated their time and skills to help out in all areas of the festival, including set-up, security, entertainment, food service, bartending and break-down/clean-up.

Volunteers are needed again for this year, especially for Sunday, to make PrideFest 2000 another successful event.

You are invited to join the 2000 Volunteer Corps. It can be hard work, but it's also a lot of fun. What better place to share in the spirit of PrideFest than in the company of friends and family while providing services to the community?

As a volunteer, you will receive free admission on the day or days you work. If you assist

with pre- or post-festival tasks, you will receive a complimentary ticket to the festival. All volunteers get a special badge to identify you as a volunteer, a complimentary meal at the festival, and an invitation to the volunteer party later in the

year. All this and the satisfaction of knowing you did your part for the most exciting Pride festival in Wisconsin!

Two volunteer orientation sessions will be offered and can be especially helpful for first time volunteers: Saturday, May 27, 10:30 am to noon at the LGBT Community

Center, 170 South Second Street in Milwaukee; and Wednesday, June 7 6:30 to 8:00pm at the Youth Activity Area on the PrideFest grounds (Henry W. Maier Festival Park), 200 North Harbor Drive along the lakefront (park in Lot A south of the Summerfest Administration building and enter Gate 6).

Continued on page 72

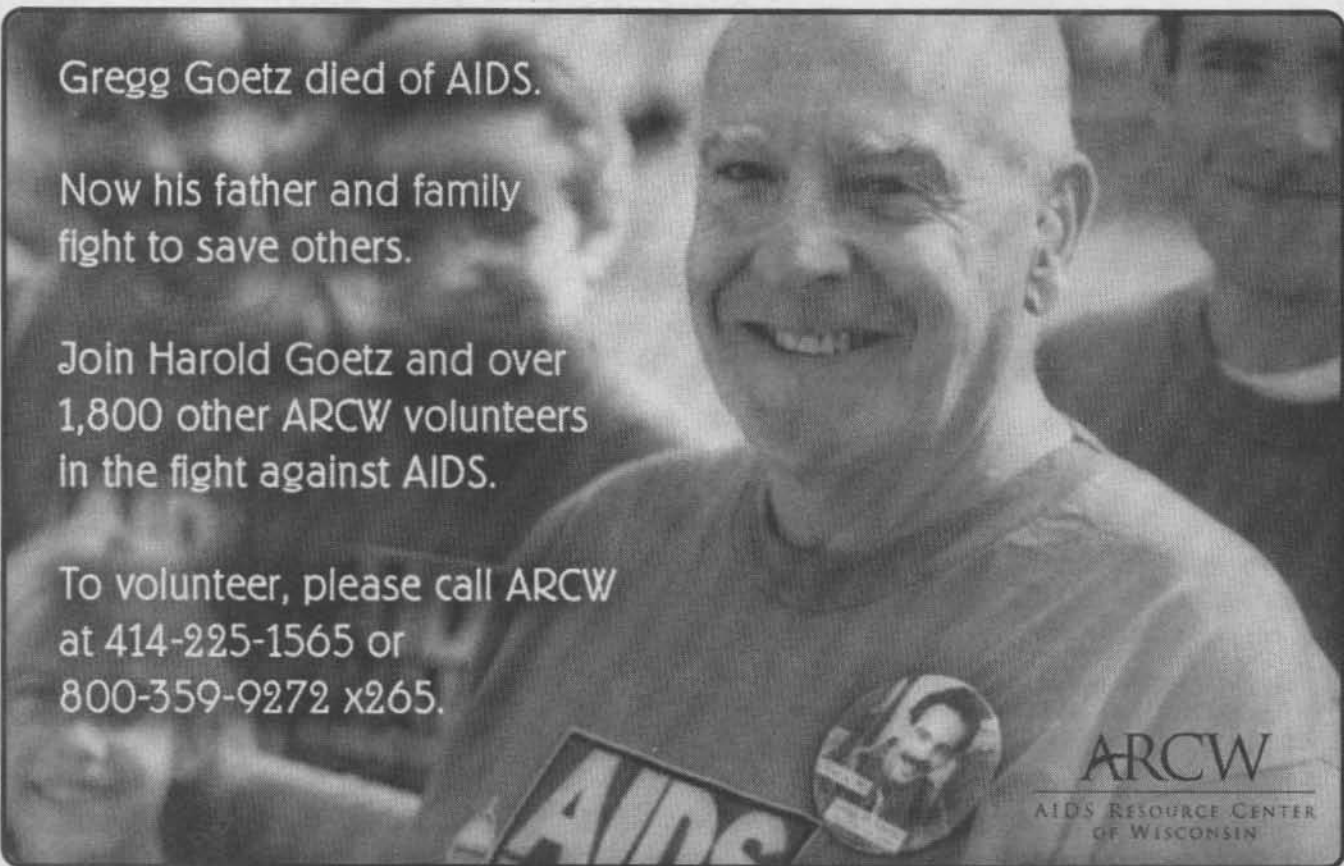


Gregg Goetz died of AIDS.

Now his father and family fight to save others.

Join Harold Goetz and over 1,800 other ARCW volunteers in the fight against AIDS.

To volunteer, please call ARCW at 414-225-1565 or 800-359-9272 x265.



TAKE YOUR VOWS - COMMITMENT CEREMONY

Make or renew your vows as a couple at a commitment ceremony from 4:00-4:30pm Sunday, June 11, at the Dance Tent. The Rev. Lew Broyles, pastor of Milwaukee's Metropolitan Community Church, will officiate, as he has at the past six PrideFest commitment ceremonies.

"What makes the mass wedding better and better every year is the growing seriousness of commitment on the part of participants," Broyles says. "It would tear your heart just to see it."

It's hearts and flowers - and cake. Last year's cake, big enough to serve all participants and guests, was a fruit-filled white cake with rich, creamy frosting. It will be that big this year again, and depending on the whim of the cake-maker, may be adorned with pillars or fountains, as it has been in previous years.

Just like last year, there will be the availability of private ceremonies for those couples who want to have a more personal celebration. Private ceremonies will be held in a quite grassy area near the lakefront.

Couples who plan to participate must pre-register at the Metropolitan Community Church booth in the Marketplace area. For the mass wedding on Sunday evening, the cost is \$15, and couples will receive flowers or a boutonniere, a picture in front of a decorated trellis, cake, and a certificate. A fee of \$40 will be charged for private ceremonies.

Broyles expects 125 couples to participate this year, depending on the weather. Past weddings have included couples from four states away, he says.

For more information on the commitment ceremonies, contact the Rev. Lew Broyles at 414-383-1100.



ORGANIZATIONS CAN MAKE MONEY

When organizations provide volunteers for PrideFest, they get paid for the work. With no up-front costs, it is a guaranteed fundraising event for any organization.

Organizations simply guarantee the number of volunteers required for particular assignments. A work roster is provided to the organization and it is their responsibility to fill in the roster for the day. Volunteers might staff a food stand, a beer pod, or a ticket booth for Friday, Saturday, or Sunday, or help with clean-up on Monday. Organizations can divide up shifts as it suits their members. One group earned as much as \$1,200 one year. All volunteers receive passes for free admission on the days they are assigned to work, along with a complimentary meal.

Assignments can be made to match the number of volunteers an organization can guarantee. Applications will be taken through mid-May if there are openings.

"If they wait too long, they might lose out on some good money-making areas," warns PrideFest Volunteer Coordinator Sheri Goldberg. "Some of the things are just a flat fee, like taking tickets. At the food booths they earn ten percent of the gross, and drink areas earn five percent."

PrideFest depends on organizations for this kind of support. "We really appreciate the organizations who lend us a hand," Goldberg says. "A lot of people think they don't want to work during the festival, but before you know it, they're having a good time. They're helping us out, they're earning money for their organizations, and they're volunteering with their friends, so it's really a great opportunity."

Applications are available from the PrideFest office. Call (414) 645-3378.

Sponsors

INSTEP SPONSORING STONEWALL TENT AND COMEDY STAGE

As a continuing PrideFest sponsor, IN Step, Wisconsin's LGBT Community Newspaper, is supporting the Stonewall Tent, the 'soapbox' where speakers can bring their messages to festival-go'ers and where organizations can meet with the LGBT community.

"It is especially appropriate that we are sponsoring the Stonewall Tent where different groups and individuals in the LGBT community come to speak out because IN Step exists to provide a forum for everyone in our community," said IN Step Editor William Attewell.



In the evening, the Stonewall Tent changes format and becomes the Comedy Stage for both national and local stand-up acts.

Founded in February of 1984, IN Step is the state's oldest LGBT publication. It also has a vibrant presence on the web at www.instepnews.com.

IN Step provides LGBT Wisconsin with the most up-to-date, comprehensive statewide and national news, a complete calendar of events, an indispensable guide to Wisconsin LGBT and supportive business and organizations, and the state's most effective classified ads. IN Step is respected for its unmatched coverage of Wisconsin's art scene, including regular artist profiles and reviews. IN Step covers Wisconsin's LGBT night life and club scene extensively and features popular local and national columnists.

IN Step is distributed free of charge at many locations throughout the state of Wisconsin and at gay-friendly locations in 34 other states. Subscriptions are available. IN Step can be reached at 1661 North Water Street, Suite 411, Milwaukee, WI 53202, 414-278-7840 voice, 414-278-5868 fax, and by e-mail at editor@instepnews.com.

Volunteers can get applications by visiting the lobby area of the PrideFest office at 907 South First Street in Milwaukee, or contacting PrideFest at (414) 645-3378, pridemilw@aol.com, www.pridefest.com or P.O. Box 511763, Milwaukee, WI 53203. Applications should be returned as soon as possible.

Volunteers must commit to 4-1/2 continuous hours of volunteer time. You can sign up to work with a friend and be assigned to the same time and location. You will receive confirmation of your assignment shortly after registering, and will receive a card for free admission about two weeks before the festival.



Here are some of the duties PrideFest can use your help with:

Security

Ticket Seller - You can be the very first person to meet and greet the visitors by working at the front gates selling tickets.

Information Booth - Serve as our Goodwill Ambassadors for the many visitors who are from out-of-town and need a little guidance finding their way around the grounds.

ASL Interpreter

Parade Hand (Friday only)

Food Service

Ticket Taker

Volunteer Check-In - You'll assist with getting all the volunteers and entertainers checked-in at Gate 6 and headed in the right direction.

Bartender (Must be 21 or older)

Children's Activity Area - Assist in special children's activities including face-painting, games, singalongs and clowning around.

Set-up

Food Preparation (Friday only)

Clean Up (Monday only)

Parade

STRIKE UP THE BAND....

Strike up the band with music of celebration! Illuminate the night with pride! Show the world there are more stars and glitter in our parade than in the heavens as our community sparkles in a Mardi Gras-style Pride Parade.

This one-time night parade was endorsed by the majority of parade participants who returned their surveys last year. "This is a unique way to kick off the Pride Weekend," said Rick Finger, Parade Coordinator. "In other cities, night parades have been extremely successful."

Wisconsin's Pride Parade will step off at 7:30pm Friday, June 9th. The route has changed slightly from past years. Marchers and units will assemble along North Harbor Drive. At step-off they will head north to Michigan Avenue; west on Michigan to Cass; north on Cass to Wisconsin Avenue; west on Wisconsin to Milwaukee Street; south on Milwaukee to Chicago Street; and then east to the front gates of the festival. PrideFest Rainbow Flags already line the route.



The Police Band will return for a second year. They are comprised of volunteers from the police force. A new participant this year is the Milwaukee County Sheriff's Department. PFLAG (Parents, Friends of Lesbians and Gays) will serve, once again, as color guard with members from around the state being invited to participate.

This year's judges are Margaret Henningsen, Alderman Paul Henningsen, Alderman Mike DAmato and County Supervisor Dorothy Dean. There will be awards for first place marching unit, first place decorated car and first place float. Units are advised to incorporate this year's festival theme, "PrideFest 2000: Proud from

Continued on page 72



NEW ROUTE!

Marchers and units will assemble along North Harbor Drive. At step-off they will head north to Michigan Avenue; west on Michigan to Cass; north on Cass to Wisconsin Avenue; west on Wisconsin to Milwaukee Street; south on Milwaukee to Chicago Street; and then east to the front gates of the festival.

Parade

the Inside and Out" into their decorations. Elaborate floats are encouraged for the joy of all. If participants need instructions on illuminating a float, please contact the PrideFest office for a booklet. The Marching Units, decorated cars, and floats can enter for \$35 till May 19th and \$50 after May 20th. Parade applications are available at the PrideFest office.

While parade organizers encourage marchers to have fun, participants are reminded that costumes and clothing must comply with the state obscenity statues and city public decency ordinance. Decisions on the propriety of attire will be made by the parade coordinator. These laws also apply to the festival grounds.

Finger has been coordinating the parade for seven years, and treasures the feeling of watching the parade step off. Finger has recruited volunteers to serve on a committee and helped organize the units before the parade. The 1999 parade was the largest to date, this year's parade should be as exciting.

Entertainment

The acts and activities listed on the following pages comprise a small portion of all the things to see and do at PrideFest 2000.

Fabulous Food - This year the biggest variety yet, everything from standard fare to the exotic.

PrideFest Marketplace (open **ONLY** Saturday & Sunday) - The BEST in shopping. Featuring clothing, jewelry, arts/crafts, books and PrideFest 2000 collectibles.

Volleyball Social - Where you can sit and watch or join in on the fun.

Children's Activities and Youth Activity Area - Saturday, June 10 is Family Day. And the Youth Area is produced by, with and for youth with a stage for programs and a juice bar.

Ecumenical Service on Sunday - Bringing together people of all faiths to share in a service of prayer and thanksgiving.

"Light Up The Sky" Pride Fireworks - We were the first in the nation to take to the heavens.

INSIGNIA

Sales & Solutions

4-Color Brochures
Business Cards
Statements/Invoices
Labels

Stationery/Envelopes • Laser and Continuous
Filing Products • Any Business Printing

PROVIDING QUALITY SERVICE TO OUR COMMUNITY

(262) 783-7456 voice

(262) 783-7435 fax

Entertainment

Friday

MILLER STAGE

5:30	Shoreline - Milwaukee
6:30	Opening Ceremonies
7:00	Petra Luna
8:00	Singsational Productions
9:00	Awards
9:30	TBA
10:30	Parade Awards
10:45	TBA
Midnight	Closed

THE GARDENS

5:00	Gay Youth - TBA
Midnight	Closed

The Rainbow Cafe is Closed Friday

THE DANCE TENT

8:00	Mardi Gras Dance Party
Midnight	Closed

Saturday

MILLER STAGE

Noon	Ronnie Nyles
1:00	EDEN
2:00	Pulsation Band
3:00	Petra Luna
4:00	Men Out Loud
5:00	Deborah
6:00	Mia Montenegro
7:00	Sometimes Y

Saturday

MILLER STAGE (CONT)

8:00	Michelle Balan (Comedy)
9:00	Ce Ce Peniston
10:00	Fireworks
11:00	Lily White Review
Midnight	Closed

STONEWALL/COMEDY

7:00	Comedy - Open Mic Night
9:00	Comedy - TBA
10:00	Fireworks
11:00	Comedy - TBA
Midnight	Closed

A LITTLE BIT OF NEW ORLEANS COMES TO PRIDEFEST

In keeping with the Mardi Gras theme with this year's parade, PrideFest will be hosting a Mardi Gras party in the Dance Tent, Friday June 9. Music starts at 8:00 and will include a mix of zydeco, cajun and, of course, dance music. And, to add to the fun, all festival goer's who arrive at the gates in costume will get in FREE! Costumes can range from full-body to just feathered masks.

"The Dance Tent will be have special decor for this year's party," said Co-Director Michael Lisowski. "What's Mardi Gras without a little glitz and beads?"

So, if you missed the main event in New Orleans, be sure to check out the jesters at the Dance Tent where volunteers from the Brew City Bears will be more than happy to keep your cups full with some of the best drink this side of Louisiana.

Entertainment

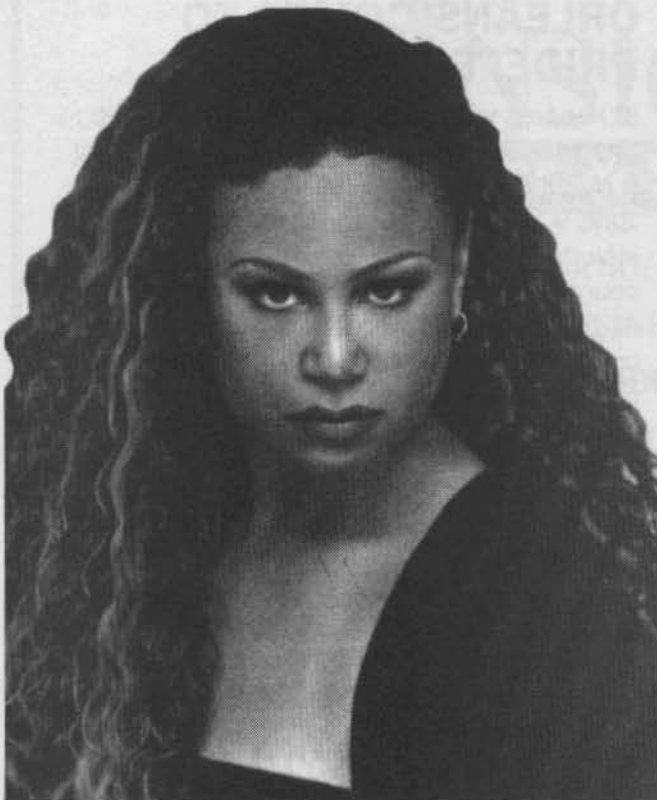
Saturday

THE GARDENS

Noon	TBA
1:00	TBA
2:00	Shoreline - Milwaukee
4:00	Pride Band
5:00	Cream City Squares
8:00	TBA
9:00	TBA
10:00	Fireworks
11:00	TBA
Midnight	Closed

THE RAINBOW CAFE

1:00	TBA
2:00	TBA
3:00	Cream City Chorus



Page 74

Saturday

THE RAINBOW CAFE (CONT)

4:00	John Scuduto (Jazz)
5:00	Jeff Bailey
6:00	Fest City Singers
7:00	Entertainers Against AIDS
8:00	Mr. & Miss PrideFest
	USofA 2000
Midnight	Closed

THE DANCE TENT

2:00	Dance
10:00	Fireworks
11:00	Dance
Midnight	Closed

Sunday

MILLER STAGE

Noon	Interfaith Services
1:00	Jeff Bailey
2:00	Singsational Productions
3:00	Rufus
4:00	Pulsation Band
5:00	bent
6:00	Alpha Dog
7:00	Men Out Loud
8:00	Lisa Lisa
9:00	Fireworks
10:00	Closed

CECE PENISTON will perform Saturday, 9pm on the Miller Stage.

Entertainment

Sunday

STONEWALL/COMEDY

6:00	Comedy - Flaming Dykasaurus
7:00	Comedy - Michelle Balan
8:00	Comedy - TBA
10:00	Closed

THE GARDENS

Noon	TBA
1:00	TBA
2:00	TBA
3:00	Cream City Squares
6:00	TBA
7:00	TBA
8:00	TBA
10:00	Closed

THE RAINBOW CAFE

Noon	Closed
1:00	Interfaith Fellowship
3:00	TBA
4:00	TBA
5:00	Mia Montenegro
7:00	Miss PrideFest USA
10:00	Closed

THE DANCE TENT

4:00	Mass Wedding followed with a reception in the Miller VIP area
5:00	Dance
10:00	Closed

Directory

2-Burn, 11708 West North Avenue, Wauwatosa, WI 53226. **414-607-7000**. Wisconsin's only showroom of ventless fireplaces. Preferred dealer of Firelight hand-blown glass candles. We also carry a huge assortment of incense, oils and holders.

Action Wisconsin, PO Box 342, Madison, WI 53701. **608-283-3251**. A statewide, nonprofit, nonpartisan organization working to advance and protect civil rights for Wisconsin's Lesbian, Gay, Bisexual and transgendered citizens and their families. We monitor the media, research legislation, communicate with elected officials and work with individuals and organizations from across the state toward this goal.

AfterWords Book Store & Espresso Bar, 2710 North Murray, Milwaukee, WI 53211. **(414) 963-9089**. Afterwords is Wisconsin's exclusive LGBT bookstore with an extensive selection of fiction and non-fiction titles, travel guides and AIDS-related literature. Afterwords also features a wide variety of gift items, cards, CDs and cassettes, videos, T-shirts and magazines. Visit our espresso bar featuring coffee drinks, cold beverages and fresh baked goods.

AIDS Resource Center of Wisconsin, 820 North Plankinton, Milwaukee, WI 53203. **800-359-9272**.

Best Western - Inn Towne Hotel Milwaukee, WI. **414-224-8400 or 877-ITHOTEL**. Downtown value priced hotel. Inquire about our special PrideFest packages including tickets and transportation.

Bi Definition, 170 South 2nd Street, Milwaukee, WI 53204. **414-774-5055**. Bi Definition is a social, support and activist organization for bisexuals, people questioning their orientation, those who dislike labels, and our friends and families. We exist to facilitate the development of and maintain a cohesive bisexual community in metropolitan Milwaukee. Bi Definition meets often for a variety of activities, publishes a quarterly newsletter, and warmly invites new people to join us!