



Give the People Light and they will find their own way.

The Wisconsin Light

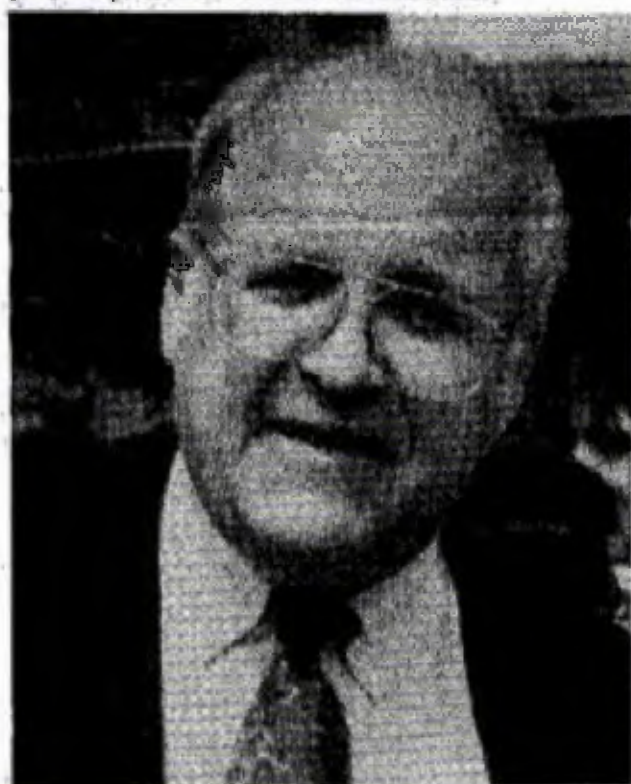
Major State Political Races Too Close To Call for September 8th Primary

Congressional Races Too Close to Call

[Milwaukee]- Sources close to various campaigns have told *Wisconsin Light* that Democratic Primary elections in the Fifth and Second Congressional Districts and for the U.S. Senate are too close to call.

In all three races Gays and Lesbians have a good chance to elect staunch advocates of Gay and Lesbian rights. "There's no question about it," said one political analyst. "On September 8th, Lesbians and Gays can be the deciding factor in at least two Congressional races and possibly even the U.S. Senate primary."

Voter turnout on September 8th is expected to be about 33% of all eligible voters. Lesbians and Gay voters account for about 10% of Wisconsin voters. If all of them voted they could provide up to 33% of all votes cast. That would be more than enough to swing the election to pro-Gay and Lesbian candidates.



FRED KESSLER

In the Fifth Congressional District, former Judge Fred Kessler is said to be in a dead heat for the lead in his race. Kessler is the only candidate to extensively campaign within the Gay and Lesbian community. He rented a booth at Pridefest 92, held a coffee for Lesbian and Gay activists and has even campaigned in Lesbian and Gay bars. He has issued a comprehensive Gay and Lesbian Issues paper calling for an end to all forms of discrimination against Lesbians and Gays.

TURN TO KESSLER, PAGE 12

Boycott Against United Way Grows Over Boy Scout Funding

[Milwaukee]- In an update on a story in the August 20-September 2 issue of *Light*, Queer Nation (QN) Milwaukee has officially announced that it will form a Queer Scouts working group and join the growing national boycott of United Way, the largest funder of the Boy Scouts of America (BSA). United Way contributed \$90 million last year to BSA or one third of BSA's annual budget. United Way Milwaukee allocated \$760,000 to the local Boy Scouts last year.

Candy Walton, Director of Marketing and Communications for United Way Milwaukee was asked to comment on QN Milwaukee's decision. She was reluctant to do so because, she said, to her knowledge, United Way Milwaukee had received nothing from QN Milwaukee on their position or decision.

QN has announced that there will be a meeting between QN members and "top

Moody and Feingold Seek Gay Support

By John Quinlan

[Madison]- Gay and Lesbian voters throughout Wisconsin will have the opportunity to choose among two out-spoken proponents of their rights in the Democratic Primary for U.S. Senate on September 8. Both Milwaukee Congressman Jim Moody and State Senator Russ Feingold (D- Middleton) have actively solicited support among Wisconsin's Gay and Lesbian community and would work for federal Gay rights legislation if elected, they say.

Moody and Feingold are running in a hotly contested three-way race with Milwaukee businessman, Joe Checota, on the road to challenging conservative incumbent Senator Robert Kasten in November. Feingold, considered to be the underdog early on, has surprised pundits by pulling ahead of Checota to claim second place in recent polls.

Feingold: A Viable Alternative

These polls indicate that both Checota and Moody have been hurt by a series of attack ads that they had launched at each other. Feingold, with a fraction of his opponents' television ad budget, has positioned himself as a viable alternative in innovative ads such as a "David Lettermanesque" video in which he visits the homes of his opponents.

With his new position in the polls, Feingold seems to have overcome the perception that he is a "spoiler," preventing Moody from receiving the votes he needs to beat Checota. Through his hard work in building a grassroots organization, Feingold supporters say that their candidate has now positioned himself as a viable alternative to both of his opponents.

Feingold Endorsed By Lesbian/Gay Leaders

Moody has gained the respect of Milwaukee's Gay and Lesbian community through his outspoken support of civil rights initiatives. Two weeks ago, for example, he received the editorial endorsement of the *Wisconsin Light*.

Perhaps less known, however, is Feingold's exemplary record of support for Gay and Lesbian civil rights issues. Feingold's candidacy has received the endorsements of Dick Wagner, Tammy Baldwin, Marc Pocan, and John Neess — the state's current delegation of openly Lesbian and Gay officials. His supporters also include Milwaukee activist Tom Zander.

TURN TO FEINGOLD, PAGE 11

Clarenbach In Tight Madison Primary Race

By John Quinlan

[Madison]- David Clarenbach is facing the political fight of his life in his race to become the Democratic nominee and run against incumbent Congressman Scott Klug (R-WI). Clarenbach is facing a strong challenge from Native American activist Ada Deer in a race that pollsters are calling too close to call.



REP. DAVID CLARENBACH

Clarenbach, who has long considered a run for the seat that had been held for thirty years by his political mentor, Robert Kastenmier, began the year with a large political war chest. However, in terms of fundraising in 1992, Deer has proved to be extremely competitive with Clarenbach.

Clarenbach

Clarenbach was the author and chief proponent of Wisconsin's landmark civil TURN TO CLARENBACH, PAGE 9

Early Intervention Program For People With HIV Begins

[Milwaukee]- The Milwaukee AIDS Project (MAP) in collaboration with STD Specialties Clinic, has implemented a new program for individuals who recently have tested positive for HIV. The program is called "Positive Approaches To Health" or PATH.

According to Doug Nelson, Executive Director of the AIDS Resource Center of Wisconsin (ARCW) PATH, two years in the planning, is aimed at the approximately 6,500 people infected with HIV in Milwaukee. Many of these people, he said, are not receiving information on how to live with the disease, or how to stop its spread.

Nelson said that early intervention is a strategy to encourage newly-infected people with HIV to take advantage of health and social service systems so that life-prolonging interventions can be quickly implemented.

"PATH fills the gap between initial HIV infection and the onset of symptoms," said Nelson. He noted that it is "a collaborative effort integrating MAP's health education, case management and risk-reduction expertise with the health assessment practices of the STD Specialties Clinic."

STD Specialties Clinic is an anonymous HIV counseling and testing site that provides medical and laboratory assessments, and diagnosis and treatment for sexually transmitted diseases.

PATH is available to persons throughout metropolitan Milwaukee and

ACT UP Surveys, Meets With Candidates

By Patrick Flaherty

[Milwaukee]- ACT UP Milwaukee, the local chapter of the AIDS Coalition To Unleash Power, on August 31, released the results of its survey of candidates for the 5th Congressional District and Bob Kasten's Senate seat. The AIDS activist group reported a successful return rate for its questionnaire, sent out in early August to determine politicians positions on AIDS issues.

Three of the five major senatorial candidates returned the survey, as did three of the four major Democratic Congressional candidates for the 5th District, vacated by Jim Moody for his Senate run.

ACT UP also organized follow-up interviews with campaigns wishing to meet with members of the AIDS community before the September 8 Primaries. The group hopes voters will use the information gathered to select sound candidates in the up-coming elections.

Surveyed Candidates

In all, nine candidates were surveyed by certified mail. These were: Senatorial candidates Kasten, Republican challenger Roger Faulkner and Democrats, Moody, Joe Chicota and Russ Feingold. The four Congressional candidates were: Tom Barrett, Fred Kessler, Marc Marotta and Terrence Pitts.

ACT UP noted that it lacked the resources to do an exhaustive, district-by-district evaluation. The 5th District was targeted because it has a high AIDS caseload as well as being the home district of the Milwaukee AIDS Project (MAP). The group only sent the survey to Democratic candidates in the 5th District because of the area's history of solid Democratic representation.

Faulkner, Feingold and Moody TURN TO CANDIDATES, PAGE 11

incorporates the following components: physical and mental health assessments, health status monitoring, health, educational and cooperative therapies.

Physical and Mental Health Assessments

The physical health assessment includes a complete head-to-toe physical exam, laboratory testing, and a health history review. Each is performed by a qualified nurse clinician under the supervision of a licensed physician.

Mental health assessments help determine how the PATH client is coping and what types of support might help. A complete mental health history is provided to all PATH clients.

Physical and mental health assessments and screenings are used to facilitate appropriate referrals to area treatment providers. Medical care and treatment for HIV disease are not provided by the PATH program.

Health, Education and Cooperative Therapies

The PATH program assists clients in assuming responsibility for their own health and well-being through health promotion therapies and educational activities directed at stimulating the body's own healing process.

Reiki, massage therapy, nutritional counseling and additional cooperative therapies are available and provided by trained professional practitioners.

For further information on how you can participate in PATH, call the PATH Coordinator at MAP, (414) 273-1991.

TURN TO BOYCOTT, PAGE 5