



Give the People Light and they will find their own way.

The Wisconsin Light

LAMM Proposes Lesbian Community Center

[Milwaukee]- At a recent meeting of the Lesbian Alliance of Metro Milwaukee (LAMM), four women presented plans for a proposed Lesbian social facility.

Bonnie Austin, Rosemary Caravella, Mimi Memmel and Jill Sanfilippo advised the group of representatives from various Lesbian organizations that they have formed a core committee to initiate the action necessary toward the purchase or rental of a building to serve as a gathering place for Lesbians.

The proposed building will be called "The Women's Cultural Community Center" and will operate as a non-profit facility, the purpose of which will be to provide a chemical free and smoke free social and event space for Lesbians in the greater Milwaukee area.

Stating that they had recognized the need for and are willing to take the initiative to create such a place, Memmel told the group that the core committee had originated at a West Side Dykes Association meeting in response to a strong interest and support for a centralized space for socializing, such as experienced at Apple Island in Madison.

A Unifying Force

Caravella elaborated on the purpose of the committee by stating that it was their intention to provide and maintain a facility to be used as a social and information center for Lesbians in the Greater Milwaukee area; to centralize the availability of services for Lesbians; to provide a supportive and safe environment for women's gatherings; to function as a unifying force among organizations and individuals serving Lesbians; and to reinforce and maintain the ideals and principals of feminism.

Among the committee's goals, Sanfilippo listed: The acquisition of a women's building and the centralization of information and activities occurring in the Milwaukee Lesbian community.

Austin presented a chart that showed that the development and operation of the proposed center would be handled by a Board of Directors. Various committees would be formed. Among these are: activity, information, cultural diversity, event production, facilities management, finance, fundraising, membership, newsletter/publicity and volunteer coordination.

The core committee said that they were in the process of incorporation. The members urged their listeners to demonstrate their support by completing one of the volunteer questionnaires that they had distributed.

Those interested in giving their time and energy to this project should write to: WC, c/o P.O. Box 71230, Milwaukee, WI 53211.

NOW Endorses John Benson For State Superintendent of Schools

[Madison]- At a press conference in the Senate Parlor in the Capitol in Madison, the Wisconsin National Organization for Women (NOW) on March 23, 1993, endorse John Benson in the election for State Superintendent of Public Instruction.

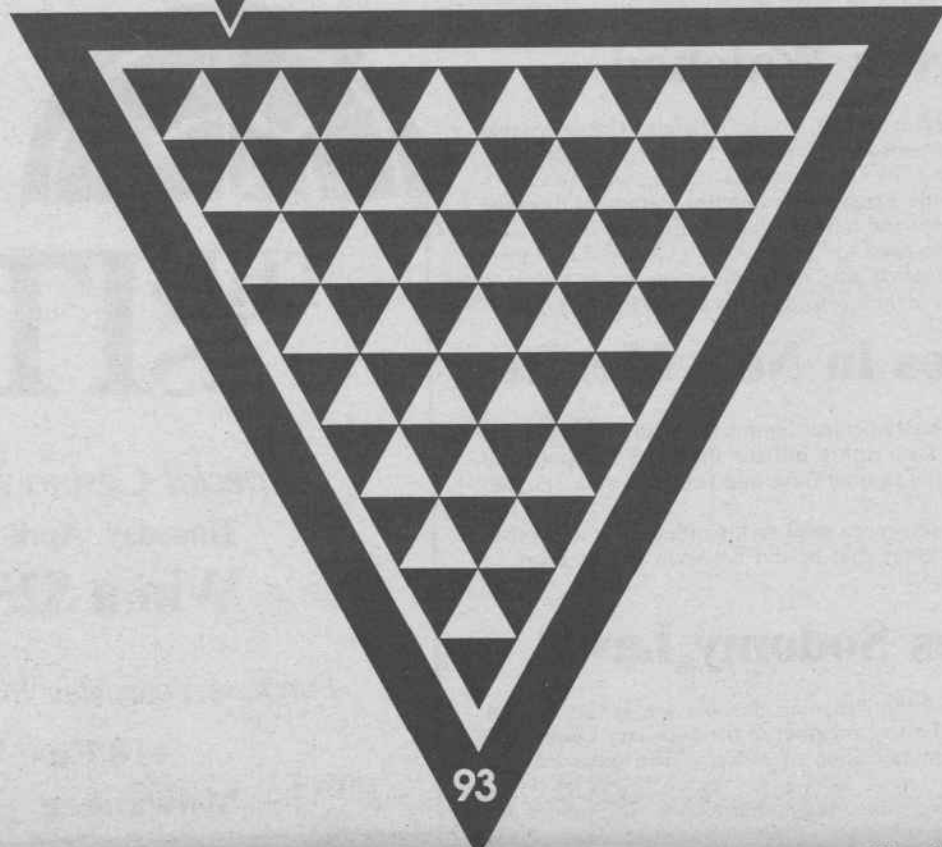
According to Wisconsin NOW President Margaret McMurray, Benson is the best candidate to ensure that thousands of Wisconsin school children are protected against discrimination. McMurray said that Benson has "promised to name women to half of the appointive positions in the department and will work hard to ensure more employees of color are recruited for the agency."

By contrast, McMurray noted how Linda Cross, Benson's opponent in the race, is unfamiliar with basic laws supporting the prohibition of discrimination in public schools, despite her years in the classroom.

Cross supports abstinence-only sex education programs that have met rejection from experts around the state

Angry Neighbors Threaten Madison's Scheel AIDS House

F O R W A R D
I N P R I D E



The Milwaukee Lesbian/Gay Pride Committee has announced that the above art work will be this year's logo for the June 12-13 Parade and Festival.

Students Asking Marquette To Help Stop Campus Homophobia

[Milwaukee]- In mid-October, 1991, when Katherine Leinart, then a Junior at Milwaukee's Marquette University, walked into her Physiology class, she got quite a shock. On the side of the blackboard where announcements are written, she read, "Gay Beating Contest, Saturday, 1:00 p.m., Schroeder Beach."

In the nearly year and a half since then, over 20 incidents of Gay-bashing have been documented on the Jesuit campus. The incidents range from name-calling to anonymous signs to physical violence, over half of them directed at women.

Incidents like these happen all the time according to Steve Wilger, a member of REASON, an acronym for Rights and Equality for All Sexual Orientations. Wilger said that REASON had been in existence for under a month.

In October, 1991, the Marquette

University Student Government asked that sexual orientation be included in the university's non-discrimination policy. The resolution was sent to Father Albert DiUlio, Marquette's President, but, Wilger said, there was no response. REASON was formed to force a response.

REASON does not consider itself either a protest or activist group, but only a group of Lesbian, Gay, Bisexual and heterosexual (more than half) students who are frustrated at what they consider to be the University's lack of response to the violations of rights on campus.

Wilger was asked what it was like to be Gay on Marquette's campus. He answered, "It's pretty bad. It's just a very oppressive atmosphere. It's not one at all in which anyone would feel comfortable in coming out." Wilger said that of Marquette's some 10,000 students, only approximately 50 are out. "That's insane," he said.

Marquette has other problems besides homophobia. Wilger painted a picture of the University that is, as he said, an "institution that is predominately white, predominately upper-class." There is racism directed at African Americans, Hispanics and Asians along with sexism directed against women.

Asked about faculty attitudes, Wilger said that "there are extremes." For example, he said, the Psychology Department has included sexual orientation in their non-discrimination policy as has the English Department, the Theatre Department and the Social Work Department.

Wilger was asked what REASON wanted from Marquette. He replied that they wanted the university to acknowledge that "we exist." We want some "basic human dignity," he said. "We want a statement from the administration that this kind of behavior (anti-Gay violence) will not be accepted."

A Demonstration for Rights

On Tuesday, March 16, 18 students and one alumnus poured into O'Hara Hall to deliver a letter to DiUlio. The letter asked two things. 1. An official, written

By John Quinlan

[Madison]- A number of residents of an east side neighborhood responded with homophobic invective and threats of arson when given the news that a special facility for people with AIDS would be built nearby.

About two dozen highly inflammatory calls were received at the Madison AIDS Support Network and the homes of members of a MASN housing committee in the days following the sending of a letter to neighborhood residents describing the new facility. Persons who heard a tape recording of some of the telephoned threats were deeply shaken by the intensity of the anger — and the ignorance — of the callers. Several callers explicitly made threats to burn the facility down. The Madison police are investigating.

The developments come at a time when years of hard work are beginning to pay off. The Rodney Scheel House, named after the late community leader and Gay bar owner, is envisioned to be a 23 unit building for people with AIDS who can't live on their own. Over \$60,000 has been raised privately, which will be combined with a \$1.2 million grant from the federal Department of Housing and Urban Development (HUD).

HUD will provide rental subsidies under a 20 year contract that will keep the units affordable. While MASN and other community agencies will provide basic support services, the house is not planned as a medical treatment facility.

Callers who identified themselves as potential neighbors of the project betrayed an ignorance of the means of transmission of the AIDS virus. Several remarked that a nearby park would no longer be safe for themselves or their children. In a front page article in the *Capital Times*, an elderly resident said that she could live with a house for the elderly or the poor, but that she was afraid that the presence of the house would put her at risk for AIDS.

Inquiries with AIDS support organizations elsewhere in the country reveal that making the location of such a facility well known is very much the exception rather than the rule. One agency official compared such a facility to a battered women's shelter in that the administrators of both types of facilities generally try to keep the location of the facility a secret in order to protect the occupants from people who would do them harm.

MASN Scheel House Committee Chair R. Richard Wagner explained that, in this case, construction of the house required a conditional use permit that necessitated a public hearing. "We wanted to get out the word in advance of that hearing — to introduce ourselves to the neighborhood," he told the *Light*. "Besides, this is a town that requires that there be a public process."

Wagner emphasized that "there are many in the neighborhood who are supportive. To those great and kind individuals we offer our thanks." Both Mayor Paul Soglin and Ald. Henry Lufler have also been highly supportive of the project.

The Hauk Avenue site is in the neighborhood several blocks north and west of the East Washington Avenue Ella's Deli. It has many multi-unit buildings similar in size to the proposed facility and it is believed the new facility will blend in with the surrounding neighborhood. The site was also chosen because of its closeness to buslines and other vital services in the context of a quiet neighborhood.

Wagner praised the efforts of those who have worked for many years to make the house a reality. He expressed great satisfaction with the design arrived at by the development team.

Wagner said that he wasn't so much

TURN TO MARQUETTE, PAGE 15

TURN TO HOUSE, PAGE 15

NATIONAL NEWS BRIEFS

Wheaton Alumni Organizing

[Wheaton, IL]- Paul Phillips, an alumnus of Wheaton College in Wheaton, Illinois, has been busy organizing a Gay and Lesbian alumni group from their alma mater. The College is a strictly conservative, Fundamentalist Christian school.

Phillips said he got the idea after hearing about a young student at Wheaton who had committed suicide because he was Gay. "I wanted to prevent this from ever happening again," Phillips said.

In just a few months with minimal advertising, more than 60 Gay/Lesbian alums have signed on with the group. For more information, contact Phillips at 369 Montezuma #209, Santa Fe, NM 87501.

Victory In Anti-Gay Military Fight

[Washington, D.C.]- The Lambda Legal Defense and Education Fund announced a victory on March 17 in the United States Court of Appeals for the District of Columbia. The Court denied the government's motion to stay proceedings in "Steffan v. Cheney", a challenge to the military ban on Lesbian and Gay servicemembers, and ordered the clerk to schedule the case for briefing and argument.

The lawsuit was filed on behalf of Joseph C. Steffan, a former midshipman at the U.S. Naval Academy who was discharged in 1987, six weeks before he was to graduate, because he is Gay. The Administration had asked the Court to put the case on hold pending the outcome of current Congressional hearings on the military ban.

Members of Congress Watched

[Washington, D.C.]- A group of former senior White House officials, Congressional staffers, and lobbyists who have organized themselves into The Nathan Hale Brigade, continues to gather evidence of misconduct by members of Congress. Accessing established networks of Washington insiders the Brigade is compiling details of financial misconduct, marital infidelity, sexual harassment and other such improprieties.

According to the Brigade the evidence will be used to "persuade members of Congress to consider all the ramifications of a vote against the President's Executive order to secure the right of Gay men and Lesbians to serve their country in its armed forces."

Gay Rights Bill Dies In New Mexico

[Santa Fe, NM]- On Thursday, March 18, the Judiciary Committee of the New Mexico House of Representatives killed a proposed Gay rights bill for the 1993 session. The Committee tabled the bill banning discrimination against Gays and Lesbians on a 7-5 vote after a one and a half hour hearing.

Gov. Bruce King said the issue had prompted more mail to his office than any other single bill he could remember. King made it clear that he did not want the measure to reach his desk.

Arkansas Continues Sodomy Law

[Little Rock, AK]- A lone lawmaker who said that learning that his son is Gay helped him to come to grips with his prejudices, was the sole member of the Judiciary Committee of the Arkansas Senate to vote for the decriminalization of sodomy. The measure was defeated on a 3-1 vote.

Arkansas remains one of five states that have same-sex sodomy laws. The others are Nevada, Montana, Texas and Kansas. Laws in other states prohibit certain kinds of sex between heterosexuals as well as homosexuals.

Escort Service Grows In Aspen

[Aspen, CO]- A heterosexual escort service, Aspen's Escorts, is doing so well that its owner has decided to offer Lesbian and Gay companions as well for the next ski season. The service currently has 40 men and 40 women heterosexual employees. Charges range from \$300 to \$500 per escort per day. The service said that upon announcing their intent to add Lesbians and Gays, over 200 people applied.

Tom Hines, president of the Aspen Chamber Resort Association said Aspen is tolerant. "As long as anything is done with taste and not rubbed in anyone's face, Aspen will allow it to go on."

Oliver North Apologizes For Jokes

[Richmond, VA]- Former Marine Lt. Col. Oliver North said he was sorry if a joke he told at a recent GOP event offended some Gays, but said that he was even sorer that his remarks gave the media ammunition against him.

At a March 12 dinner honoring former Rep. Stan Parris, North joked that he had trouble getting through to the White House until he used an exaggerated lisp to tell the operator, "Excuse me..."

"That remark was a serious mistake on my part," North said. "It allowed the Washington Post and the assembled media to make me personally and conservative Republicans less than what I know us to be."

Schalala Quote Pulled From Book

[New York, NY]- Not too long ago, Book-of-the-Month Club and Quality Paperback Book Club launched their new Triangle Classics Gay and Lesbian literature series by publishing Rita Mae Brown's Lesbian classic, *Rubyfruit Jungle*. Included on the dustjacket was the following quote: "Molly Bolt is a genuine descendant — genuine female descendant — of Huckleberry Finn." The quote is from Donna Shalala, Secretary of Health and Human Services.

Book-of-the-Month Club spokeswoman Katherine Burkett told the *Advocate* that when the Bantam Book edition of the book was published that the quote had been pulled. "We had no idea how prominent she'd become," Burkett said.

Calvin Klein Idol Is Tarnished

[New York, NY]- Singer, Calvin Klein underwear model and the idol of many Gay men, Marky Mark has a murky past.

In 1986 Mark and some of his friends were charged with pelting some African American children with stones while yelling "Kill the nigger!" Mark avoided prosecution by signing a restraining order.

In 1988, came a conviction for assaulting two Vietnamese men over a case of beer. Mark served 45 days of a two-year sentence.

In January, 1993, Mark appeared on British TV and defended reggae singer Shabba Ranks' condemnation of Gays as sinners against the laws of God.

Marks' manager, Dick Scott, insists that the singer is not homophobic. Matt Foreman, executive director of the New York City Gay and Lesbian Anti-violence Project said, "It's not that we expected to find a mind behind the body, but we certainly didn't expect to find a homophobic racist being peddled to make money off our community."

Mark has issued a statement saying, "I want to make it clear that I condemn anti-Gay hatred and violence."

News Briefs are compiled by the Editor from mainstream newspapers and wire services, organizational press releases and Gay and Lesbian papers from across the U.S.

Annual Casino Night To Be Held In Milwaukee For CCF On May 16

[Milwaukee]- Milwaukee's Cream City Foundation (CCF) will be holding its Seventh Annual Casino Night on Sunday, May 16, 1993, in the Ballroom of the Park East Hotel.

CCF is Greater Milwaukee's grant making, community based foundation whose purpose is to support the needs of the Gay and Lesbian community. Since its origin in 1982, the Foundation has funded a wide variety of projects by making grants to a number of organizations. Among these are: the Milwaukee AIDS Project, the Milwaukee Lesbian/Gay Pride Committee, the Lambda Rights Network, the Lesbian Alliance of Metro Milwaukee, Channels 10/36 (for the showing of *Long Time Companion*), the UWM/Great Lakes Film Festival among many others.

To help continue its work, the Foundation holds several fundraisers throughout the year, but the largest attended event is the annual Casino Night. This Las Vegas-type evening enables CCF supporters and their friends to enjoy Blackjack, Craps and Roulette.

There will be, as usual, food, soda, beer and gambling chips. This year there will be a chance to win two round-trip tickets to anywhere in the U.S. donated by Continental Airlines.

In addition, during the evening, attendees will be able to purchase tickets for mini- raffles for many exciting prizes.

The cost of admission is \$10.00 and casual dress is suggested. Tickets can be purchased at upcoming Casino Night promotions or by mail order to CCF, P.O. Box 204, Milwaukee, WI 53201.



THIS IS IT!

Special Casino Night Promotion

Thursday, April 15 from 7-9 P.M.

Win a \$25 Bar Tab!

Purchase Your May 16 Casino Night Tickets Here

418 East Wells Street

Milwaukee

278-9192

*Joe, June and Staff
Wish You and Yours
A Happy Easter*

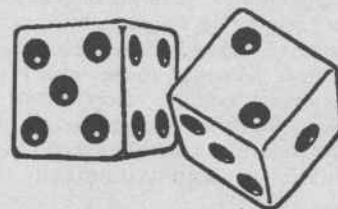
Sponsored by Milwaukee's
Cream City Foundation



Major Sponsorship by
Miller Brewing Company



Shake Rattle & Roll!



Casino Night '93!

SUNDAY, MAY 16, 4-8^{pm}

PARK EAST HOTEL

TICKETS: \$10 advance, \$15 at the door

Admission Includes: Food, Beer, Soda, Gambling Chips,
Entry to Grand Prize.

PROMOTIONAL SPONSORS*

Wed, April 14	M&M Club	8-10pm
Thur, April 15	This Is It	7-9pm
Fri, April 16	BJ's	10-Midnight
Sat, April 17	Wreck Room	10-Midnight
Wed, April 21	Vuk's Place	9-11pm
Thur, April 22	Partners	10-Midnight
Fri, April 23	3B's Bar	9-11pm
Wed, April 28	1100 Club	8-10pm
Thur, April 29	Triangle	9-11pm
Fri, April 30	Ballgame	7-9pm

*Buy a Casino Night ticket during these hours and get special deals... (see bar ads).

State Backs Down — Will Not Cut AIDS Funding By 50%

[Milwaukee]- In response to the front page lead article in the last issue of *Light*, Ken Baldwin, Director of the Wisconsin Bureau of Public Health, wrote a letter to the paper denying a statement made by Doug Nelson, Executive Director of the Milwaukee AIDS Project (MAP) Nelson had said that the Bureau intended to cut AIDS prevention grants by 50%. Baldwin claimed that the "statement is incorrect."

Baldwin maintained that "Nelson's concerns" had "apparently" stemmed from a routine meeting with Dr. Vergeront, Director of the AIDS/HIV Program. "I can assure you," Baldwin wrote, "that we intend to provide continued funding for the AIDS Service Organizations (ASO) through the federal Prevention Block grant."

"Ken Baldwin would make an outstanding revisionist historian," Nelson said in response. Nelson said that he was at the ASO meeting where the matter was discussed and "he (Baldwin) was not."

Nelson went on to say that Vergeront "very precisely" reported that the HIV prevention contracts would be cut as of July 1, 1993. Nelson added that "Anyone understanding simple math could quickly calculate that it represented a 50% cut in state prevention funding."

Attempts were made to contact Baldwin. He did not return calls.

Nelson went on to say that "Rather than trying to revise the history of that meeting, Ken Baldwin should acknowledge the truth of the situation and that is that the state has changed course due to state-wide pressure from ASOs like MAP. They have decided not to cut the prevention funding."

Nelson called this "a small victory" and said that he was grateful to the

John Utes to Perform for BestD Clinic April 14

[Milwaukee]- Two diverse benefits will be held in the coming months for Brady East STD Clinic. On April 14, John Utes, renowned Baritone, will hold a concert at Villa Terrace. Utes, currently living in Chicago, is well-known in the Milwaukee community. Utes and his accompanist, John Komasa, are donating their talents to this fundraiser for the Clinic. The concert begins at 7:30 p.m. and a donation at the door is requested. All proceeds from this concert will go to the Clinic.

Wreck Room Benefit

On May 8, the Wreck Room bar will be holding a fundraiser for the Clinic. Billed as the "Best Damn Underwear Party and Wet Shorts Contest," the event will take place the same weekend as the Daddy/Daddy's Boy Weekend. The party is scheduled to run from 3:00 p.m. to 8:00 p.m. A \$3 donation at the door is requested with all proceeds going to the Clinic.

Prizes will be given to the top three contestants in the Wet Shorts Contest. Free clothes checking will be available for those who wish to show "it" off. Due to City Ordinances, a No Thongs or Jockstraps rule will be enforced.

BestD Continues On Cable

The BestD cable program, "BestD Clinic Answers Your Questions on HIV," is in its third month of cablecast on MATA Channel 47. The program airs at 7:00 p.m. every Thursday night.

The first segments dealt with testing and transmission. Currently, the topic is safer sex practices.

Bob Ambelang, Clinic Director, said that the number of calls has increased tremendously since safer sex became the issue. "People are concerned about their risk of exposure to this virus," Ambelang said. "They are sexually active and want to know how to prevent its spread. We issue a disclaimer that we are not on the air to moralize, but rather to discuss in a clinical way how to halt the spread of HIV."

Ambelang said that the program did get a "few crank calls" in the first weeks, but "those folks either got bored or realized that we were not promoting what they considered immorality."

For more information about any of the services offered by the Clinic, call (414) 272-2144 afternoons after 3:00 p.m.

"powers that be at the Bureau."

Nelson went on to say that he had asked Baldwin to increase AIDS prevention funding from "approximately \$300,000 to \$500,000 in 1994."

"If Mr. Baldwin and the state truly care about the devastation of this epidemic, they will publicly announce their support of this crucial request for more funding," Nelson said.

Prison System Reforms

Nelson said that as a result of the article, the State Department of Corrections had asked him to meet with officials there. The purpose of the meeting, Nelson said, would be to talk about a time-table for the implementation of HIV policy reforms for the present system.

Senator Kohl

Nelson said he had met with Senator Herb Kohl's Chief of Staff and "pleaded for Kohl's understanding" of the importance of supporting President Clinton's economic stimulus package.

Kohl is focusing his greatest attention on reducing the deficit. However, Nelson said, he believes that the deficit can be reduced at the same time that federal moneys redirected to fighting the AIDS epidemic. Clinton's stimulus package would do this.

Nelson urged all readers of *Wisconsin Light* to call or write Kohl to urge him to support the President. (See Kohl's Senate address and phone numbers in the editorial, this issue.)

Minnesota Governor Expected To Sign Gay Rights Bill

[Minneapolis, MN]- Opponents used words like "immoral," "destructive," and "outrageous." But supporters of a Gay rights bill tipped the balance with impassioned speeches of justice, equality and understanding.

A Gay rights bill that has been debated by Minnesota lawmakers for about two decades won preliminary approval Thursday, March 18, 1993 in the State Senate by a vote of 37 to 30, and final passage in the House with 78-55.

The bill went to a conference committee on Friday, March 19. According to Cynthia Scott, Editor and Publisher of *Equal Time*, a final vote is expected by Wednesday, March 31. Scott said that the governor is expected to sign the bill when it reaches his desk.

The House measure was sponsored by Rep. Karen Clark, who is openly Lesbian. The Senate bill was sponsored by Senate President Allan Spear, who is openly Gay.

The bill includes Lesbians and Gay men in the state's human rights statute. It would outlaw discrimination based on sexual orientation in housing, employment and education.

Both measures include amendments making clear that they do not protect child sex abusers. Both bills also exempt churches and religious groups from the bill's provisions, so that churches could refuse to hire Gay people for any position.

Both chambers also approved an amendment that exempts Boy Scouts, Girl

Scouts, and other youth organizations, so the groups could choose not to hire Gay people.

Seeing is believing



Makes puffiness...dark circles... even nasty little lines disappear

New CamoCare® Under-Eye Therapy

People who've tried it say it works better than department store brands...costs less... and contains natural ingredients -- no harsh chemicals.

Reduces the appearance of puffiness, dark circles and lines so dramatically -- you won't believe your eyes.

Contains the unique skin-smoothing ability of a patented Camomile. Like magic, it smooths the surface of your skin. Your under-eye area feels firmer, looks smoother, and glows with youthful freshness.



NOW TAKE 25% OFF

Call for Free Catalog and/or to place an order:

1-414-355-1000 or FAX 1-414-355-3385

M-F 9-5 PM Sat 9-1 PM

or visit us at 7970 N. 47th St. in Brown Deer

VitaMail Plus

FINALLY, LONG DISTANCE CALLING FOR GAYMERICA



Call anywhere in the world with simple dial-1 service from your home-just like you have now. We provide a calling card to use away from home-just like you have now. Customer service and long distance operators are available 24 hours a day-just like you have now.

WE MUST ADMIT, THERE IS A DIFFERENCE...

OFFICIAL LONG DISTANCE



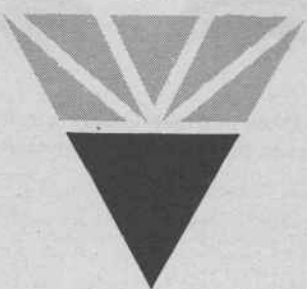
2% of your long distance charges are donated to the gay, lesbian, bi and AIDS groups of your choice.

You can save up to 25% off your long distance charges compared to the rates of AT&T, MCI or Sprint.

MAKE THE SWITCH TODAY
1-800-546-0551

Give the People Light and they will find their own way.

The Wisconsin Light



Executive & Editorial Offices

1843 N. Palmer

Milwaukee, WI 53212

(414) 372-2773

Light FAX: [414] 289-0789

PROFESSIONAL STAFF

Publisher

Jerry Johnson

Executive Editor

Terry Boughner, Ph.D.

Madison News Bureau

John Quinlan

(608) 256-8100

Arts & Entertainment Editor

Geno

Advertising Manager

Jerry Johnson

372-2773

Madison

Advertising Representative

John Quinlan

(608) 256-8100

COLUMNISTS

Maytee Aspuro, Jamakaya, Karen Lamb, Ph.D., Bill Meunier, Deb Procknow

REPORTERS

Eugene Brzenk, Ph.D., Sue Burke, Darren J. Foster, Jamakaya, Julie Kleppin, Bill Meunier, John Quinlan, Mary Shafer, Carl Sztarmay, Woodrow Thalberg

Typography & Process Graphics
C.S.P., INCORPORATED

THE WISCONSIN LIGHT is published biweekly by NOVO GRAPHICS, LTD., with offices at 1843 N. Palmer, Milwaukee, WI 53212. Advertising and copy deadline is the Thursday prior to publication. Opinions expressed by writers in WISCONSIN LIGHT are not necessarily those of the publisher, editor, or our advertisers. Any reference made to any individual or organization should not be construed as an indication of the same's sexual or affection orientation or preference. All copy, text, design, photos, and illustrations in advertisements are published with the understanding that the advertiser is fully authorized and has secured proper written consent for the use of names, pictures, or testimonials of any living person, and WISCONSIN LIGHT may lawfully publish and cause such publication to be made; and the advertiser agrees by submitting ads to indemnify and save blameless the publication of any error that may be contained in said ad. WISCONSIN LIGHT does not accept any responsibility for any claims made by advertisers. The entire contents of WISCONSIN LIGHT are © Copyrighted and protected under the Federal Copyright Act and International Conventions. Reproduction of any portion of any issue will not be permitted without express written permission of NOVO GRAPHICS, LTD. Legal venue is Milwaukee County, Wisconsin. Printed in the U.S.A.

Copyright © 1993

By Novo Graphics, Ltd.

Office Hours:

Monday-Friday-9:00 a.m.-5:00 p.m.

24-hour recording

SUBSCRIPTIONS

First-class subscription rate is \$24.95 for one year (25 issues).

Third-class subscription rate is \$11.95 for one year (25 issues).

Foreign subscription rates available upon request.

Institutional Member



GAY AND LESBIAN
PRESS ASSOCIATION

EDITORIAL

Where Is Senator Herb Kohl? Sitting on the Fence at Usual

As the battle builds over Lesbians and Gays in the military, one thing is blatantly clear. As one of our letter writers says, Sen. Herb Kohl is still sitting on the fence.

It should be pointed out, we think, that Sen. Kohl has not stood tall on Gay/Lesbian issues. He has not signed on to the Gay Civil Rights Bill. His office reports that he is still studying the matter.

Now, he refuses to commit himself on lifting the ban on Gays in the military.

In the not too far distant future, Sen. Kohl is going to be asking for our support in his re-election campaign. Our question is and will be: What has he done to deserve it? What is Senator Kohl doing now?

Wisconsin Light urges readers to contact Sen. Kohl at: 330 Hart Senate Office Building, Washington, D.C. 20510 or call: [202] 224-5653; [414] 297-4451; [608] 264-5338

Jeffrey Kremers Deserves Our Vote For Milwaukee Circuit Court

On April 6, Milwaukee County residents will have the opportunity to vote for a Branch #6 Circuit Court candidate who has what we need: vast legal experience, administrative acumen, and a broad base of support. That candidate is Judge Jeffrey A. Kremers.

As Assistant District Attorney, Kremers headed the County's Sensitive Crimes Unit and supervised sexual assault, child abuse, and neglect cases. As a partner in a prestigious Milwaukee law firm, he handled a vast array of civil cases. As a newly appointed judge, he has already streamlined the backlog of cases and instituted a new procedure for calling police officers for testimony — a saving of many hours of overtime.

Judge Kremers has convinced us he will be tough on "hate" crimes perpetrated against our community. During this campaign, he met with a group of Gay leaders and answered tough questions in a forthright and candid manner. He is very aware of our concerns.

Kremers has been endorsed by Mayor Norquist, Sheriff Artison, Governor Thompson, and both candidates for Tom Barrett's old State Senate seat. In a recent Milwaukee Bar Association survey, Kremers received 903 "qualified" votes and 134 "unqualified." His opponent received only 364 "qualified" votes, with 610 "unqualified" votes.

While Judge Kremer's opponent has been a sensitive, responsive, and effective member of Milwaukee's City Council, she has no experience in civil law, nor has she ever prosecuted a case. "I'm a quick learner," she states.

Although we have no dispute with that claim, how can we ask plaintiffs or defendants to appear before her as she climbs the judicial learning curve? While we "owe" her support, it should be in a field she knows — the legislative branch of government.

Judge Jeffrey A. Kremers certainly merits our support for a full six-year term. We urge your vote for him on April 6.

FROM THE EDITOR'S DESK

'For Better Or For Worse' Cartoon Takes On a Gay Theme

By Terry Boughner

I don't see that it would do much good, but I do have a recommendation to give to President Clinton about a possible Supreme Court nominee.

The person I have in mind is highly qualified with all of the necessary academic credentials in order. Further this person is articulate, not afraid to stand up for what they believe in, and seems to be neither a conservative nor a liberal, but a fair-minded person who has been through the mill.

The person I have in mind is Anita Hill.

Once in awhile, perhaps more often than we think, Clio, the Muse of History, indulges herself in irony. I think this could be one of those times.

On another note. How many of you read the Milwaukee Journal's Green Sheet? If you haven't been doing that, you should.

There's a comic strip there called "For Better Or For Worse" by Lynn Johnston. In case you're not familiar with it, it's about a middle class Canadian family, Mom, Dad, three kids. I've always liked it, but now I like it even better.

The reason is that the family's teen-age

son, Mike, has just had to face his best male friend telling him that he's fallen in love — but not with a girl.

How it's going to develop, I don't know. I called the Journal and, as might be expected, all the bigots and yahoos are crawling out from under the rocks to scream their heads off.

I can guess what they're all upset about. Mike tells his friend, "You're not Gay, okay? You're just confused." To which the guy replies, "Mike, my mind is crystal clear. Everyone else is confused."

According to Johnston's agent, Johnston's phone has been "ringing off the hook." She's not taking calls.

Such is the sad penalty you pay in this country when you talk about reality, a reality that doesn't fit with some bigot's conception of the facts.

In any case, if you don't read the Green Sheet, I think it would be worth your time to do so now — and call the Journal to voice your appreciation. The number is (414) 224-2000. Ask for the editor of the Green Sheet.

LAMM Makes Recommendations For April 6 Election

[Milwaukee]- The following endorsements of political candidates running in the April 6, 1993 general election have been endorsed by the Lesbian Alliance of Metro Milwaukee (LAMM).

State Superintendent of Public Instruction — — — John Benson

The race for State Superintendent of Public Instruction pits school superintendent John Benson against teacher Linda Cross. The State Superintendent is an important leader on school policy, curriculum and materials issues statewide.

Benson has proven his leadership abilities and commitment to multiculturally inclusive schooling and safety for all students while a school district superintendent.

Cross is widely known for crossing her union's picket line and has recently made statements supporting local banning of textbooks and literature deemed "inappropriate." She has clearly staked out a conservative constituency for support.

In this important race, the Lesbian Alliance of Metro Milwaukee [LAMM]

strongly urges voters to select John Benson.

State Senate District # 5 — — David Cullen

Nothing less than control of the State Legislature is at stake in this race to pick the successor to Congressman Tom Barrett. Democratic State Representative David Cullen faces off against Republican State Representative Peggy Rosenzweig in this important race. The winner is likely to determine which party controls the State Senate.

If the Democrat, Cullen, wins, the Democrats will likely retain control of the State Senate and the all important Committee Chair assignments.

If the Republican, Rosenzweig, wins, the Republicans will likely gain control of the Senate.

A Republican controlled Senate will pave the way for anti-choice and anti-Gay and Lesbian legislation. In this scenario, with a Rosenzweig victory, we would almost certainly see anti-choice and anti-Gay legislation this year. For this reason, this is the most important race for Lesbians and Gay men this April 6

Cullen is a proven supporter of

Wisconsin Light April 6 Election Recommendations

**State Superintendent
Of Schools**

John Benson

•••

**First Congressional
District Primary**

Peter Barca or

Jeffrey Neubauer

•••

State Senate Districts

David Cullen (5)

Joseph Wineke (27)

Jerome Dachel (23)

•••

**Madison's Municipal
Judge**

Shelley Gaylord

•••

Madison School Board

Carol Carstensen

and

Peter Williams

•••

**Milwaukee County
Circuit Court #6**

Jeffrey Kremers

Lesbians and Gay men. He is also one of only a handful of State Legislators who stood up to the Right to Life last session during the minor's access debate.

Rosenzweig, a moderate Republican, is a recent convert to the pro-choice camp. She has taken heat from radical right wing opponents in the past, but she is certainly no champion of the Gay and Lesbian cause. Despite her moderate positions, a Rosenzweig victory could spell disaster for our communities.

LAMM urges all voters to support the Cullen campaign.

To volunteer for the Cullen campaign, call [414] 442-1212.

Judge Branch #36 — — — Lorraine McNamara-McGraw

Quite possibly our strongest supporter in Milwaukee's City Hall, Alderwoman Lorraine McNamara-McGraw is seeking to advance to the bench in this election. McNamara-McGraw has been a long-time advocate for Gay and Lesbian civil rights and as an attorney, fought for civil rights and recognition under the laws for all people. The popular Alderwoman will make an excellent Judge, carrying her concern for equal protection under the law to the bench.

LAMM urges all Lesbians and Gay men to support electing our ally, Lorraine McNamara-McGraw, Judge for Bench #36.

Milwaukee School Board — — — District #4 — Jared Johnson; District #5 — Mary Bills

LAMM asks all friends to support Jared Johnson and Mary Bills for Milwaukee School Board. Both Johnson and Bills are current school board members who have proven their support for multicultural education and for the tolerance curriculum proposed last year. Both Bills and Johnson have come under fire from Fundamentalist Christian organizations and the right. Now, we have the opportunity to support our supporters.

Johnson is unopposed in his race. But if you live in District #4, please show your support by voting for him.

Bills faces a tough challenge from her conservative opponent, Edith Radtke. Bills placed second in the primary election to Radtke and must come from behind to hang on to this school board seat. Lesbians and Gay men cannot afford to let homophobes gain control of the Milwaukee Public School Board.

LAMM urges all friends to support Mary Bills in whatever way possible and residents of the 4th and 5th Districts to vote for Jared Johnson and Mary Bills respectively.

President Clinton's Gay Non-Combat Duty Remarks Upsetting

[Milwaukee]- President Clinton's remark that he might consider restricting Gays to non-combat duties brought a variety of reactions ranging from indifference to outrage.

Clinton's remark, which came during a White House news conference, March 23, the first one of its kind of his administration. Clinton said that he would not rule out the possibility of duty restrictions for Gays in the military. The next day, he seemed to back down.

Appearing on CBS Evening News, Clinton told Dan Rather that, "What I said was, if they made a recommendation to me (in the Aspin Report due in July), would I review it? Of course, I would. I mean, I asked them to study this. I can't refuse then, to get the results of the study and act like — that my mind is made up."

Congressional Reaction

Rep. Barney Frank (D-MA) told **Light** that Clinton had made a "mistake" and that he had "backed off."

Frank said he did not think that Clinton was endorsing the segregation of Gays in the military. "Clinton has too much confidence in his ability to talk his way in and out of things," Frank said, and added, "I'm glad this is behind us now."

Rep. Gerry Studds' (D-MA) office told **Light** that Studds was treating the whole idea as a "trial balloon." Studds will hold off judgment "unless the idea gains strength."

Sen. Russ Feingold's (D-WI) office told **Light** that the Senator stands as before; "the ban (against Gays in the military) should be lifted fully."

Senator Kohl's office simply said that the Senator had no statement; that he was "waiting for the hearings."

Other Congresspeople speaking for background voiced similar sentiments. However, one cautioned that there was "great concern" among some Democrats that Clinton's reputation for compromising was getting him into trouble.

As one Congressperson told **Light**, "What he (Clinton) should have done was to end the ban with a stroke of his pen. Then, if Congress wanted to override it, so be it. Clinton should have let Congress be the fall guy."

All the six offices and officials who **Light** talked to said the story was not much of a story — unless it is a "symptom of things to come in this administration," one warned.

Gay Outrage

Both the National Gay and Lesbian Task Force (NGLTF) and the Human Rights Campaign Fund (HRCF) issued strongly worded statements protesting Clinton's remark.

However, the most strongly worded statement of all came from David Mixner, an openly Gay man who was one of Clinton's highest ranking campaign advisors.

Speaking to the Metropolitan Community Churches in Dallas, Texas on March 27, Mixner reminded the President of the Gay/Lesbian community's support in the last election. However, he warned, "There can be no further compromises with our dreams, our rights and our futures."

Mixner went on to say that "Separate assignments and separate units is no more than old-fashioned segregation."

"Do not underestimate Gays and Lesbians," Mixner warned the President. "We are willing to lose our jobs for freedom. We are willing, if necessary, to go to jail. We are willing to do anything except return to the slavery of self-hatred and low self-esteem."

Great Desserts Await Sweet Sunday Guests

Valentine's Day is coming a little bit late this year. That's right, you didn't miss it. The Madison AIDS Support Network's Sweet Sunday (which has been a Madison institution during February for years) will take place on Sunday, April 18th at 1:30 pm.

Delectable desserts, good company and wonderful prizes will await you at Sweet Sunday's traditional locale, the Wilson St. Grill on S. Hamilton St., just two blocks off of the Capitol Square.

Sweet Sunday is one of two Madison-based events that provide significant support for the many important services like prevention, education, outreach and direct-care that MASN offers to people who are affected by AIDS and HIV. Last year, Sweet Sunday raised more than \$18,000; let's make this April 18th an even sweeter Sunday!

Local restaurants and bakeries are donating a variety of cakes, cookies and chocolate delights. An all expenses paid bicycle getaway in France for two, or two tickets to anywhere Midwest Express flies are among the dozens of valuable prizes donated by area businesses.

A donation of \$20 is requested. To volunteer, or for more information, call MASN at (608) 238-6276 or (800) 486-6276.

Subscribe to Wisconsin Light

1 Year (25 issues)
First Class \$24.95
Third Class \$11.95

1843 N. Palmer St.
Milwaukee, WI 53212

MASN Changes 'Picture Times' Newsletter With New Format

[Madison] - There's a new face to the newsletter of the Madison AIDS Support Network. Evolving from its beginnings as a chronicle of happenings at the agency itself, the newsletter has taken on a new name, **Positive Times**, a new sophisticated look and a new mission.

"As promised, our newsletter has a new face, and it will bring to you readers the many issues of AIDS and HIV," writes Mary Alice Mowry in her Executive Director's Report in the first edition of the re-vamped publication. "As a network we attempt to impact public policy, provide services to those affected by AIDS and HIV disease and carry forth effective programming and support to reduce the spread of HIV infection. **Positive Times** is a link for us all."

The March issue of the quarterly publication contains a variety of articles

including a cover story on The Changing Face of AIDS, articles on nutrition and maintaining a healthy outlook, a first person essay by a person with AIDS, an article on spirituality by a local pastor and an article written from the perspective of a nurse who works with AIDS patients.

Editor and MASN Community Relations Coordinator Dale Johnson anticipates that many of the issues will take on a specific focus. For example, the next issue, due out in early summer, will focus on Alcohol and Other Drug (AODA) issues, including profiles of MASN clients who are I-V drug users. Johnson and the agency welcome public input. To receive a copy of the **Positive Times**, or for more information, contact MASN at (608) 238-6276 or (800) 486-6276.



THE KARK GROUP
HAIRDRESSING

50% Off
YOUR NEXT HAIR DESIGN
Including Consultation, Cut & Style

PLEASE USE THIS ON YOUR VERY FIRST VISIT. SELECTED STYLISTS ONLY.

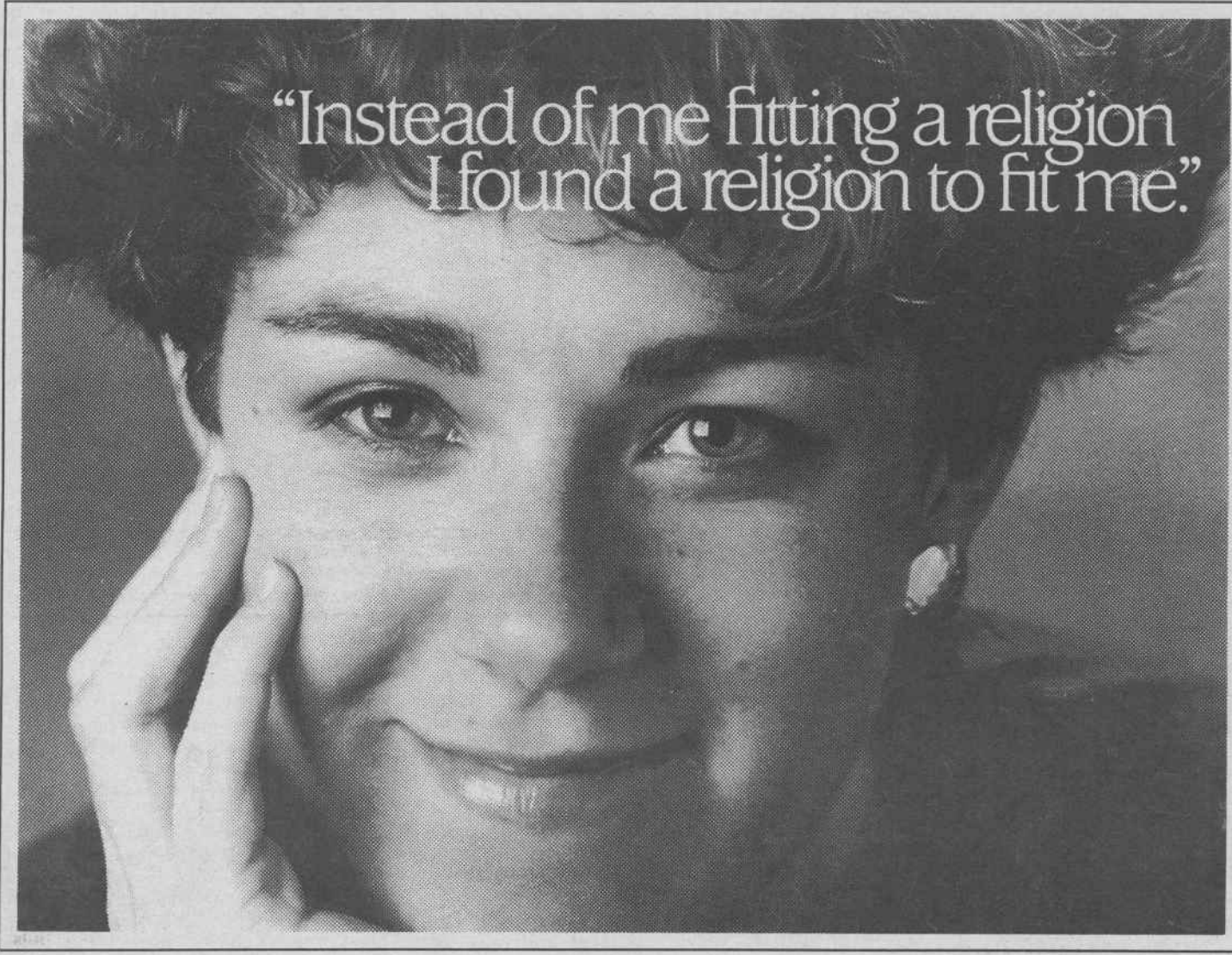
773 NORTH JEFFERSON STREET / 224•1783 • HOURS: 10 A.M. - 8 P.M.

WSA COMMUNITY PHARMACY
nutritious holistic body care co-op

bulk herbs & herbal formulas, tinctures & teas, homeopathics, vitamins, nutritional supplements, safe & fun pleasure products, natural hair & body care, holistic health books, aromatherapy, essential, fragrance & massage oils, quirky & informative staff, and a full prescription pharmacy.

All this with a staff that is gay and lesbian friendly (sometimes very friendly). Come see us, we won't necessarily give you the straight answer.

341 State Street (Entrance on Gorham)
Madison, WI (608) 251-3242



"Instead of me fitting a religion I found a religion to fit me."

"I remember telling my Sunday School class and my father that I didn't believe in God. But it wasn't God I didn't believe in, it was God as an old male Caucasian with long white hair.

"I spent years probably not going to church once. Then, senior year in college, I started looking into a Unitarian Universalist church in town. I remember thinking, this is very odd. I'm making this choice on my own. I was going because I wanted to go, because something was missing on Sunday morning.

"One of the things I value most about being a Unitarian Universalist is being able to question. To step back from what I had previously 'believed in.' Nobody says to me I can't believe, nobody is saying I haven't the right to question.

"Unitarian Universalism encourages openness. It encourages dialogue. When I tell my friends that, they're amazed it's still considered a religion. And they want to know more about it."

EASTER SUNDAY SERVICES
10 a.m. April 11 at
First Unitarian Church,
1342 N. Astor St., Milwaukee
273-5257

The Light LIVELY ARTS



Dr. Noel Benedict (Karen Trumbo) exchanges views on life with Claire Jabrowski (Trisha Todd) at a seaside resort bar in "Claire of the Moon."

'Claire of Moon' Director Speaks Up To Support Her Film

By Maytee Aspuro

Nicole Conn, writer, director and executive producer of the film *Claire of the Moon* discussed her film with **LIGHT** reporter Maytee Aspuro.

M. The last big event in regards to Lesbian filmmaking was *Desert Hearts* in 1985. How do you feel about the span of 7 years between films? Do you ever foresee that that is going to narrow?

N. The only way that I think that it's really going to narrow is two things. If the mainstream industry realizes that there is a core audience that will support the film, much like *Claire* has and are willing to basically reinvent their marketing so that they can do the kind of exposure to get good strong audiences. Another way that it will happen is if Lesbians have more financial backing in doing their work. This was a very, very tough road... It is extremely difficult to make a film this small budgeted and then to distribute it without any money is almost impossible. We are extremely in debt. I wake up every night with the sweats trying to figure out how I'm going to pay off all the bills.

M. How much did *Claire* cost?

N. Well, *Claire* costs in the pure filmmaking aspect of it about \$325,000. It was about \$180,000 to put it in the can, meaning that we finished filming and then with post-production it ended up being somewhere in the neighborhood of \$325,000. We spent the last \$200,000 trying to expose the film. We are about a \$325,000 feature. That is nothing. It's a drop in the bucket compared to studio features but when you don't have the money it's a tremendous amount of money. You cannot expose film, you cannot do any marketing without money.

M. Has basically your whole marketing plan been targeted to the Lesbian audience?

N. We definitely think our core audience is the Lesbian audience but we also feel the film has an extremely strong crossover potential for art house theatre goers who aren't freaked by Lesbianism... There is a lot of straight couples that have seen the film and have absolutely loved it because it is a love story and they can enjoy something that is not a shoot them up, bang-um, flasher film. And a lot of straight women who are in that sort of crossroads of their life really relate to the film or realize that they are Lesbian.

M. About the excellent soundtrack...

N. For me music is one of the key ingredients in filmmaking...I knew when I was making *Claire* since we had such a limited amount of money...one of the things we could do was do music. Michale Allen Harrison and I had known each other for years... My mother is a classical pianist and she played all the classical piano. I have a classical background and I hear stories in music and visa versa...

M. When *Desert Hearts* was released with Helen Shaver and Patricia

Charbonneau, they were two well known heterosexual actresses. Did you consider that?

N. I really didn't consider that when I cast. When I read the actresses... if you have seen *Claire of the Moon* "Moments" The Making of... I read Trisha Todd for Noel and you'd see a completely different reach she gave for Noel as opposed to the reach she read for *Claire*. It was really a matter of sensing who they were when it happened. We got Karen in the last minute hour. I had lost my lead four days before we started shooting and we got Karen Trumbo by the Goddess above thing...I will let you know one of them is a Lesbian. I'm not going to say which.

M. One thing in the way the story is told is that drinking and bar scenes are definitely shown throughout the film and of course drinking and the bar scene are very much a part of the Lesbian world. How important was it to show that realism?

N. I only considered it in the sense that I wanted to stay true to the characters. It is an unfortunate thing... The reality is that there is a lot of drinking and smoking. We want to see our images up on the screen. We have to be willing to see ourselves realistically. I did not think of the political ramifications when I went out to make this movie. I am not a political dyke at all. I'm totally not P.C. Probably as bad as you can be. I basically wrote the characters to be true to who they are. Maggie is a raving alcoholic and there is no way around it, that's who she is and *Claire* is in a crossroads in her life and very self-destructive. I think it's not uncommon when people are at a retreat situation like that to drink more and party more... not that it's necessary o.k. but it's reality. That's what happens with people. I think it also helps them to have more courage to investigate intimacy issues and whether that be good or bad it's real and my commitment as a filmmaker, as a story teller, is to be true to the characters. People think that I'm so naive because I did not think of the political backlash that I would get.

M. Have you gotten a political backlash?

N. Yes. From real politicized communities I have. In San Francisco we got extremely backlashed. Los Angeles loved this film. Straight and Gay audiences loved this film. We got critics choice in the *L.A. Reader*. In the *L.A. Times* we got a glowing review. It's so amazing the different climate each Lesbian community has. Austin, Texas loved us. When we talked to the New York people they said that they wouldn't have any problem with the smoking and drinking, "this is New York..."

M. ...as a writer I personally feel that PC is too much censorship and we can do better than that.

'Claire of Moon' Is Over Written, Over Acted and Over Directed

By Mary Shafer

"Boring, humorless and embarrassing."

Not my words, but ones I won't strenuously debate. This comment was from Jamakaya whom I joined in viewing *Claire of the Moon* before the official opening of its run at the Downer Theater (2589 N. Downer Ave., Milwaukee). she expressed this opinion during our post-viewing discussion at Ma Fischer's — we had worked up quite an appetite giggling our way through this much-hyped directorial debut by Nicole Conn.

As a Lesbian, I hate to have to give thumbs-down to an obviously earnest and committed effort on the part of another woman-loving-woman. However, in the interest of objecting reviewing, I must, in all good conscience, not recommend this film. Despite two gorgeous leading ladies, incredible coastal Oregon scenery and some interesting camera work, *Claire* falls short of its promise as a groundbreaking Lesbian film.

Cliches Is The Word

From the first "flashback" scene, *Claire* is mired in an excruciating mix of cliched story devices, stilted dialogue, wooden acting and lack of consistent momentum. In my mind, the most glaring problem with this movie is that it is "over" — overwritten, overacted and over directed.

I believe that if the approach had been understated — even minimalist — this might have been a real gem. The plot might have been left a bit more open, the script have allowed for a great deal more interpretation, the dialogue been more subtle.

Instead, the audience is bludgeoned with heavy-handed lecturing in the guise of intellectual analysis at every opportunity, redundant scenes meant to stress the tension developing between the two main characters and a storyline so predictable that it's insulting.

PR vs. Reality

Here is the story as disclosed in a publicity sheet:

"*Claire of the Moon* focuses on two very different writers who unwittingly share a cabin at an annual writer's retreat. The film stars Trisha Todd as the wild and uninhibited satirist Claire Jabrowski, and Karen Trumbo as the Lesbian author/psychoanalyst, Dr. Noel Benedict. Claire and Noel clash from the start, but their personal journey unfolds from there."

A charming premise, full of possibilities. Unfortunately, the actual scenes turn into an orgy of excessive alcohol and cigarette consumption, posing, mind games and occasional mean-spiritedness — not the kind of Lesbian images I like to see projected, either to our own culture or to the rest of the world.

Eye Candy

The tension between Claire and Noel is built up through an endless series of bitchy encounters and ends up (surprise!) in what is supposed to be, according to the press kit, "an intensely moving sex scene."

Well, I found this "chase" sequence to be tedious and frustrating. Apparently, I'm not the only one, as I read a computer bulletin board posting describing it as "the world's longest feminine hygiene commercial."

And as for the sex scene, I personally got a lot more aroused during the several "fantasy sequences" of sex that never actually happened. I credit this to the fact that there was probably less direction on those sequences, since they were only "eye candy" instead of actual plot advances, and were consequently more spontaneous and real.

All this adds up to the "boring and embarrassing" labels. The "humorless" assessment comes from the fact that this movie just takes itself way too seriously. There is so much

manufactured intensity between the characters that a bit of levity would go a long way toward relieving the viewer's feelings of being beaten to death with "message." There is an attempt made at humor with the introduction of Maggie (Faith McDevitt), apparently the owner/operator of the retreat, facilitator of writer's discussions and long-time friend of Dr. Benedict.

The problem with this is that it remains only an attempt. Maybe it's just a personal thing on my part, but I found Maggie to be so excessively butch as to be distracting.

Maybe Maggie is intended to be a relief from all the mannered dialogue between the other "writers" in the cast, who include the requisite New Age "ozone head," a "lust in the dust" novelist and a "Susie Suburban" frustrated housewife. I got the feeling they were all trying out material from their latest tomes on each other instead of really talking.

Go See It Anyway

I could go on with this kind of thing but, let me instead point out the reasons you should go see this movie anyway.

First of all, Karen Trumbo and Trisha Todd are hot, no two ways about it. Whether you like blondes or brunettes, this movie is excessively easy on the eyes.

There is plenty of sex, of both the garden variety het type and, of course, the more scintillating Lesbian encounters.

In fact, if they were to edit out all but the last half hour, *Claire* would make a decent erotica short. It will register on the Wetness Scale, if that appeals to you.

Then, there is the fact that this was a labor of love by Lesbians, for Lesbians. And that in itself is a good reason to support it. It was a first attempt. Remember that the rest of the cinematic world has had nearly a century of film making practice. We're just getting started, and we're allowed our share of shortcomings and mistakes. So let's give Nicole Conn and crew recognition, praise and support that they deserve for having the courage to try, and the encouragement to try again.

Go see *Claire of the Moon*. If you go with the attitude that you're doing it to support one woman's vision and not to be bowled over by great cinema, you might actually enjoy it.

Shafer to Sign New Book June 19

[Park Falls, WI]- Former Milwaukeean and author Mary Shafer will be at the McCullough-Skepton Pharmacy in Delavan on June 19, 1993, to sign copies of her new book, *Wisconsin: The Way We Were*. The pharmacy is located at 107 S. Third Street in Delavan and the book signing will last from 10:00 a.m. to 4:00 p.m. Store hours are 8:00 a.m. to 6:00 p.m.

Shafer's book is a popular history of Wisconsin, spanning the hundred years from just before statehood in 1845 through the end of the Second World War in 1945. *Wisconsin: The Way We Were* has a particular emphasis on the people who built the state from its beginnings as a haven for French fur traders to its standing as a major industrial force supporting America's efforts in the war, and features many never-before-published photographs.

Published by Heartland Press, an imprint of NorthWord Press in Minocqua, Wisconsin, the book retails for \$19.95 and will be officially available to the public in July. A certain number of advance copies are being sent to Delavan for the book signing.

Shafer will also be signing copies of other works published by NorthWord Press, including Aldo Leopold's *Round River*, Jim Dale Vickery's *Open Spaces* and two volumes of the new children's Field Guide/Coloring Book series *Who Lives Here?*, all of which she illustrated.

Going to the March? Washington Is Very Easy To Explore on Foot

By Terry Boughner

All Washington is divided into four parts: Northwest, Southwest, Northeast and Southeast. That happy configuration makes the city wonderfully easy to get around. Just remember what quadrant you're in or which one is your destination, and you'll be able to find what you're looking for.

The District of Columbia is a ten-mile-square area. The lettered streets all go east and west. The numbered streets go north and south. The Avenues, most of them named after the states, shoot out from the circles like arrows piercing the whole grid.

A Little History

Washington was built on what once was a swamp and, for the most part, is below sea level. It was designed by the French engineer Pierre L'Enfant who wanted to make it look like Paris; a city of tree-lined boulevards and gracious circles where life of candle lights and shadows could be experienced in the slow lane of elegance.

The city's location was a compromise, picked because Washington's Secretary of the Treasury, Alexander Hamilton, wanted Southern votes for a financial package he was trying to get through Congress. The actual site was chosen by Washington himself. He owned much of the land and figured there was a killing to be made on real estate — which there was, but not by him. Unfortunately, he died in 1799 from an excess of blood letting.

When John Adams moved into the White House in 1800, he found the Potomac River came nearly to his back door and that he should shoot ducks in the marshes on Pennsylvania Avenue. Adams said the city would never amount to much and spent as much time in Massachusetts as he could.

Jefferson was equally appalled. He told the British Ambassador that the White House was big enough for "Three emperors, two kings, the Dalai Lama and the pope."

By 1825, things hadn't improved much. President John Quincy Adams used to go swimming where the Washington Monument now is. That proved to be his undoing.

When he steadily refused to give a woman reporter an interview, she followed him one morning and hid in the bushes until he had stripped and gone in. Then, she came out, sat on his clothes and, to his consternation, refused to move until he'd answered her questions.

What To Wear

Remember, as I said, the city is below sea level. Washington can get hot, sticky, steamy hot. In April, it shouldn't be as bad as in July or August, but don't count on it.

Forget your heavy coats, scarves and gloves. Take light clothing — and even shorts. Pack some rain wear too. April is a wet month in D.C.

While you're at it, take along a pair of good, comfortable walking shoes. Not only will you be doing a lot of tramping around, but the rally will be held on the Mall. That was once part of the river that came to John Adams' door. It's been filled in, of course, but it can still back-slide to a memory of what it once was.

What To See

The monuments and buildings most people want to see are all right on the Mall. Looking east, there is the Capitol sitting magnificently on its hill. L'Enfant said that hill was a pedestal waiting for a monument, and he was right. The Capitol is one of the most awe-inspiring sights in the world.

The cornerstone was laid by President Washington (he was a Mason). When the government went to D.C. from Philadelphia in 1800, the building was just a small square. It was this that the British burned during the War of 1812. You can still see the smudge marks from the fire if you know exactly where to look.

The dome was completed during the Civil War. At one time you could climb up into it, but they stopped that in the 1950's. Too many people were jumping off.

On either side of the Mall, stretching down to the Washington Monument, are the buildings of the Smithsonian, appropriately called, "The nation's attic." That's not one museum. There are six major ones and as many smaller ones (all free). My personal favorite is the Museum of American History. If you have time for a quick run-in, go take a look.

The Washington Monument (Washington's last erection, so it is called), sits on a little hill made from land scooped out to form the Tidal Basin

(that's where the cheery trees are and the Jefferson Memorial). The obelisk was begun, then stopped because they ran out of money. When work was started again, they didn't match the stone. If you look closely, you can see the difference in color about a third of the way up.

It's exactly one mile from the Capitol to the Washington Monument. If you have the time and energy, go another mile to the Lincoln Memorial. On your way, you'll pass the Vietnam Memorial. It's one of the most moving sights in the whole city. Take my word for it.

Navigating The Metro

Washington's Metro is a fully automated subway system. There are four lines — red, blue, yellow and orange. All of them converge in downtown Washington at either Metro Center or Gallery Place. The blue and yellow lines go out to Washington National Airport.

Look for the "M" or "Metro" signs on medium sized pillars on the street. Each station has easily read maps telling you which line to take to get where, how much it will cost and how long it will take to get there.

Most tickets are 80 cents. They are dispensed from large machines near the maps. Buy your ticket, then go to the turnstile, put it in the slot and go through.

Important: The machine will spit out the ticket. Take it and save it. You'll need it to get out at the other end.

The stations are clean, very modern and safe. You shouldn't have any hesitation about using the Metro.

Keep in mind that the Metro does not run all night. Make note of the "last train" posting at stations you'll be using. Most trains make their last run a little before or after midnight.

Dupont Circle

Dupont Circle and its immediate environs IS Lesbian and Gay life in D.C. There are bars in abundance, the largest Gay/Lesbian bookstore in the world (Lambda Rising) and hosts of little restaurants, most with their sidewalk cafes.

By all means, go to Dupont Circle (easily reached on the red line of the Metro) and do whatever comes to mind (well, almost whatever).

Bar Life

There are over 30 Lesbian and Gay bars in D.C. There is no way I'm going to recommend one over the others. What I'd do is get a copy of the *Washington Blade* (it's free) and read the bar listings.

Two things to remember. One is that

D.C. has no laws against nude dancing. They strip to the buff and they do it well. Many times the strippers will come out into the audience for tips. The money is to be placed in various parts of their anatomy. 'Nough said.

Another thing is that the bars are going to be packed to the rafters. They're also all going to have heavy cover charges with beer alone priced to meet the national debt.

There's no way on earth that I'm going to try listing places to eat. You'll find those for yourself anyway.

Two Million Now Expected To March in Washington April 25

By Terry Boughner

We reported last time that the momentum for the March on Washington was building. It still is. Publications coming into *Light* from all over the country, say that more and more people are planning to attend.

The mainstream media, including the *San Francisco Examiner* and the *Washington Post* are saying that the crowds coming for the March will reach a million plus. The *Post* reports that hawkers of T-shirts and buttons are expecting an "Olympic-sized bonanza."

Dean Williams, manager of the Holiday Inn at C Street near the Mall, said, "We are approaching 4,000 reservation denials."

Washington Blade publisher, Don Michaels (a native of Pittsburgh) said that his newspaper plans to print 75,000 papers (double the usual number) with color photographs as well as a 32-page pull-out section that will have a map and list the activities surrounding the march.

Support for the March is coming, not only from Lesbians and Gays, but from our friends as well.

March on Washington (MOW) Co-Chair, Nadine Smith, reports that more than 200,000 people of color from both the Gay/Lesbian and heterosexual communities are expected to attend. "This March is unique in that people of color communities are not on the periphery this time, but have been involved on every level and at every stage of the planning for this event," Smith said.

Congresswoman Maxine Waters (D-CA) has announced that on April 22 she will sponsor congressional hearings on issues related to homosexuality in the African American community as part of March-related activities. This is the first time the topic has been opened for debate on Capitol Hill.

The March has been endorsed by civil

April 1, 1993—April 14, 1993—WISCONSIN LIGHT—7

One word of caution though, take along your own food to the March and Rally. There'll be vendors, but they'll be expensive and, like everywhere else, they'll be jammed. In fact, in any restaurant in the city, you can probably count on a couple of hours wait, so plan accordingly.

Help Lines

If you should encounter problems, here are some numbers to remember: Gay and Lesbian Hotline: (202) 269-0122 and the Lesbian Line: (202) 628-4666 or (202) 628-4669.

rights organizations including: The Southern Christian Leadership Conference, the Union of American Hebrew Congregations, the Evangelical Lutheran Church in America, Amnesty International, and The National Organization for Women, to mention only a few.

The *Washington Blade* reports that one reason for the outpouring of support from groups nationwide is the feeling exists that this is not just a Gay/Lesbian event. This is everyone's march.

The National Gay and Lesbian Task Force (NGLTF) adds that the existence in the country of "hate-filled far Right Christian groups" and their "war against civil rights" has galvanized the country into taking a stand.

Poster Boy Nunn

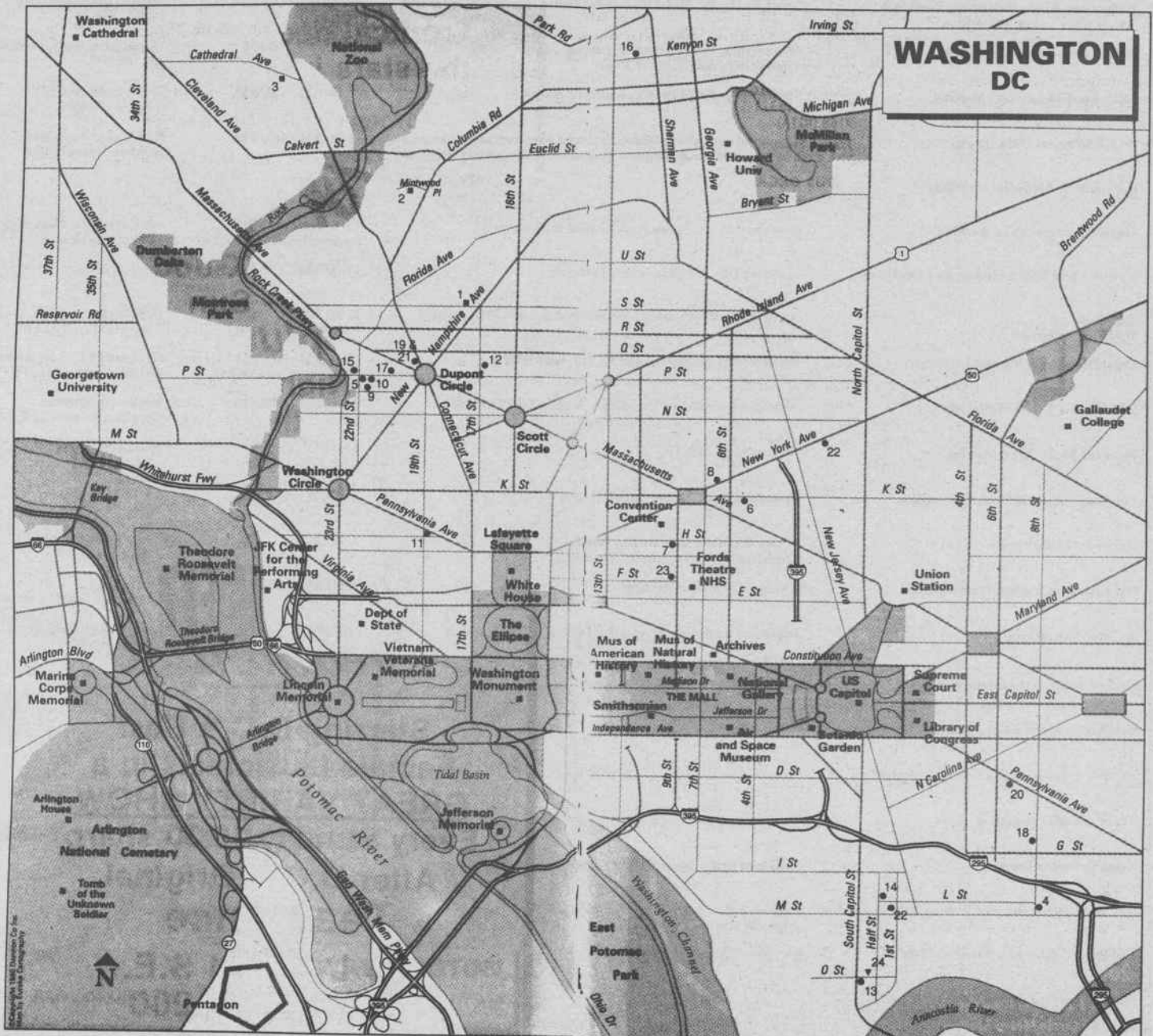
March spokesman Billy Hileman said that Sen. Sam Nunn (D-GA), Chairman of the Senate Armed Services Committee, should be "the unofficial poster boy" for the March. His anti-Gay stance has created more sympathy and support for Lesbians and Gays than he could ever have known," Hileman said.

Comparing the March to the 1963 demonstration that mobilized support for major civil rights legislation, Tim McFeeley, director of the Human Rights Campaign Fund (HRCF), said both events "are about civil rights and about discrimination, both involving significant groups of people who feel that they have been left out of the mainstream of society."

Clinton: President In Absentia

According to MOW and other sources, there has been speculation for weeks that President Clinton would address the March. Now, however, MOW spokespeople are saying that they have been told that Clinton will be "unavailable due to his involvement with the situation in Russia."

TURN TO MARCH, PAGE 9



Map Courtesy of 'The Damron Road Atlas.'

The March On Washington Events Schedule

ALL EVENTS LISTED ARE SUBJECT TO LAST-MINUTE CHANGES — PLEASE CALL THE CONTACT PERSON TO VERIFY COSTS, LOCATIONS, ETC.

What	Description/Sponsor(s)	Time(s)	Where	Cost	Who to Contact
Historical Exhibit (April 21 - May 2)	Sponsored by One in Ten, a nonprofit, gay/lesbian cultural and education organization, based in D.C.	10:00 AM - 9:00 PM (tentative hours)	Stables Art Gallery 410 8th St NW	N/C (donations accepted)	Thomas Ham (202) 319-7208
Lobbying - MOW, NGLTF, HRCF, and Mobilization Against AIDS	(de-briefing centers will be established by HRCF & NGLTF—details for lobbying will be available at the March)	TBA	TBA	N/C	HRCF Natl HQ (202) 628-4160
National Bear Gathering (April 22 - April 24)	An informal, unstructured gathering for men who identify with the bear movement	12:00 PM	Lincoln Memorial	N/C	John Runyan (206) 624-1195
Prejudice Reduction Leaders Institute (April 23 - April 25)	Sponsored by National Coalition Building Institute	TBA	Natl Coalition Bldg Inst 1835 K St NW	\$425 (includes 3 lunches)	Sherry Brown (202) 785-9400
BiNet - USA Annual Meeting	BiNET USA is a national bisexual political, educational, and networking organization working for equal rights	9:00 AM - 6:00 PM (proposed)	GWU	N/C to members	Deb Kolodny (202) 736-1755
AIDS Cure Now demonstration/ACT-UP	Sponsored by ACT-UP	10:00 AM	HHS Building	N/C	Jim Hill (414) 483-0376
Our Place at the Table/Public Policy Institute	Sponsored by NMAC	10:00 AM - 3:00 PM	Hyatt Regency 400 NJ Ave	\$150/nonmembers	NMAC (202) 544-1076
Legal Documents Workshop	Sponsored by National Center for Lesbian Rights	12:00 - 2:00; 2:00 - 4:00; & 4:00 - 6:00 (all times are PM)	Georgetown U. Law School 600 New Jersey Ave NW	N/C (except to purchase documents)	Stephanie Smith (415) 621-0674
Asian+Friends Welcome Reception		7:00 - 11:00 PM	Chastleton Apts. 1701 16th St NW	N/A	Gil Aurellano (301) 345-1230
HRCF Gala Dinner	A dinner to advance the campaigns for a Gay & Lesbian Civil Rights Bill and Gays & Lesbians in the military	7:00 (cocktails) 8:00 (dinner)	Mayflower Hotel 17th & K Sts	\$500/person (order tix by phone)	HRCF Dinner Hotline (202) 298-1122
Harmonic Convergence	A Gay/Lesbian Choral Mini-Festival sponsored by the Gay Men's Chorus of D.C. (Information available through Lambda Rising)	8:00 PM	Lisner Auditorium/GWU 21st and H St NW	\$22, \$18, \$11 (purchase from LR)	Lambda Rising (202) 462-6969
A Reading - To Benefit Lesbian Health Care	Sponsored by The Mautner Project for Lesbians with Cancer	8:00 - 9:30 PM	GWU/Marvin Center 21st and I (Eye) St NW	N/A	Carol-Ann Smalley (202) 332-5536
Shabbat evening service	Sponsored by Congregation Bet Mishpachah	8:30 PM	Natl City Christian Church 5 Thomas Circle	N/C	(202) 833-1638
HOE-DOWN! '93	A Country-Western dance sponsored by Atlantic States Gay Rodeo Assn.	9:00 PM - 2:00 AM	Natl. Building Museum 401 F St NW	\$20 (purchase tickets prior to event)	ASGRA (has message) (202) 298-0928
Lesbian Country-Western Dance	Sponsored by Bon Vivant	9:00 PM - 2:00 AM	Blossoms @ Old Post Office 1100 Pennsylvania Ave NW	\$10/nonmembers \$5/members	Katherine Windrex (301) 840-8402
National Women's Ball	Sponsored by NOW, featuring the Kit McClure Band (an all woman big band), with Kate Clinton	9:00 PM - 2:00 AM	National Press Club 529 14th St NW, 13th Floor	\$100/advance \$125/at the door	Christine Rice (202) 331-0066
Drag Show Extravaganza	Sponsored by the Transgender Conference	—	—	—	David Turner (202) 265-5891
Gay, Lesbian, & Bisexual Encampment	Sponsored by Gay, Lesbian, & Bisexual Veterans of America	—	—	—	Gene Barfield (802) 479-7934
Park Beautification Project	Sponsored by Forgotten Scouts	—	—	—	Ken McPherson (415) 626-8299
HRCF Field Training	—	—	—	—	Cathy Nelson (202) 628-8299
Rainbow Alliance of the Deaf Conference (April 23 - April 25) Registration and party	—	—	—	—	Jules Nelson (301) 270-5484 (V & TTY)
Historical Exhibit	(see entry for Friday, April 23)				
National Bear Gathering	(see entry for Friday, April 23)				
Prejudice Reduction Workshop	(see entry for Friday, April 23)				
Rainbow Alliance of the Deaf/Workshops	(see entry for Friday, April 23)				
Queer Scout Cookie Sellathon	Queer Scout Cookies are baked by a Queer Nation group based in Seattle, and will be sold throughout the day at the named locations	Throughout the day	Lambda Rising Bookstore The Wedding	\$3 (as in "queer as a three dollar bill")	Terry Kennedy (206) 328-0790
Gay Spirit Meditation	Sponsored by Gay Spirit Meditation Coalition; this service will be non-denominational and will feature singing and guided meditation	7:45 AM - 9:00 AM (service starts at 8:00 AM)	Lincoln Memorial	N/C (donations)	Patrick McNamara (505) 986-8172
HRCF Leadership Conference	Sponsored by HRCF	8:30 AM - 5:30 PM	Mayflower Hotel Connecticut betw. L & M	\$60 (if possible, please pre-register)	HRCF Natl HQ (202) 628-4160
Second Annual Bisexual Conference	Sponsored by ECBN/BiNet-USA/AMBi AU	9:00 AM - 5:00 PM	American University	\$60 (\$35 students)	ECBN (617) 247-6683
Washington Blade Welcoming Breakfast	Sponsored by the Blade, for Gay & Lesbian members of the media	9:00 AM - 11:00 AM	Washington Blade office 1408 U St NW	N/C	Don Michaels (202) 797-7000
Biblical Self-Defense Workshop	Sponsored by Presbyterians for Lesbian & Gay Concerns/D.C. Conducted by Rev. Lindsay Bittle	9:30 AM - 5:00 PM	Westminster Presbyterian 400 I St NW	\$30 (includes material and lunch)	Bill Moss (202) 397-5585
Asian-Pacific Lesbians Meeting	Sponsored by Asian Pacifica Lesbian Network	10:00 AM - 2:00 PM	2111 Florida Ave NW (Dupont Circle)	N/A	V K Aruna (301) 589-4462
NAMES Project Quilt Display	Sponsored by NAMES Project, featuring a quilt composed entirely of new panels, re-creating first quilt at 1987 March on Washington	10:00 AM - 6:00 PM	Natl Mus of Amer Hist or White House Ellipse	N/C (donations)	NAMES Project (415) 403-3627
Harvey Milk Memorial Unveiling	—	11:00 AM	—	—	Ken P. Pherson (415) 621-6367
Soccer Tournament on the Mall	Sponsored by DC Sports Assn (limited to 60 players)	11:30 AM - 4:00 PM (registration at 11:00 AM)	two fields betw Wash Mon. and Lincoln Memorial	\$20 (must pre-register) (N/C to spectators)	J C Cummings (202) 965-1549
Victory Fund Board Meeting and Luncheon	Honoring Gay & Lesbian elected officials	11:00 AM - 1:00 PM	Capitol Hilton	\$100 (call or write for tickets)	Kathleen DuBold (202) 842-8679
The Wedding	An Interfaith Ceremony of Commitment, Sponsored by UFMCC	11:00 AM follows the Wedding	IRS Building Tracks (1111 1st St SW)	\$10 for Certificate \$5 donation	UFMCC/L.A. (213) 464-5100
Legal Documents Workshop	Sponsored by National Center for Lesbian Rights	12:00 PM - 6:00 PM (6 one-hour workshops)	Georgetown U. Law School 600 New Jersey Ave NW	N/C (except to purchase documents)	Stephanie Smith (415) 621-0674
S/M Leather Fetish Conference	Workshops, booths, etc., relating to leather, S/M, fetish scenes	12:00 PM - 6:00 PM	Mellon Auditorium Constitution betw. 12 & 14 NW	\$5 donation	Barry Douglas (212) 989-4692
Fight the Right Town Meeting	Sponsored by NGLTF	1:00 PM - 4:00 PM	Washington Hilton	N/C	Scott Nakagawa (503) 221-0115
The Purple Circuit Theatre Reception	Sponsored by the Purple Circuit Theatre	1:30 PM - 4:30 PM	The Source Theatre 1835 14th St NW	N/C (members only meeting)	Bill Kaiser (213) 661-1982
Harmonic Convergence	A Gay & Lesbian Choral Mini-Festival sponsored by the Gay Men's Chorus of D.C.	2:00 PM	Lisner Auditorium/GWU 21st and H St NW	\$22, \$18, \$11 (purchase from LR)	Lambda Rising (LR) (202) 462-6969
Old Lesbians Organizing for Change	Steering Committee Meeting	2:00 PM - 5:00 PM	Holiday Inn Laurel MD (3400 Ft Mead Rd)	N/C	Ruth Heidelberg (301) 490-6735
An interfaith service	Sponsored by the Washington Area G/L Interfaith Alliance	3:00 PM	Church of the Epiphany 1317 G St NW	N/C (collection taken for area organizations)	Allan Armus (703) 525-4261
Lutherans Concerned Reception	Sponsored by Lutherans Concerned	4:00 PM - 7:00 PM	Washington Marriott 22nd & M Sts	\$5 donation	Mike Carson (803) 356-0320
Youth Empowerment Speakout (YES)	—	4:00 PM - 6:00 PM	N/A	N/A	Jenie Hall (215) 241-7133
Reception Honoring Sen. Dianne Feinstein	Sponsored by UFMCC (as an AIDS fundraiser)	5:00 PM - 7:00 PM	MCC of Washington 474 Ridge St	N/A	UFMCC (213) 464-5100
TransLation/TransNation	An Evening of Creative Reading by South Asian Lesbians	6:00 PM - 8:30 PM	Hung Jury 1819 H St NW (Alley entrance)	N/C	V K Aruna (301) 589-4462
Texas Two-Step Party	Sponsored by the Texas Human Rights Foundation	6:00 PM - 10:00 PM	Tracks 1111 1st St. SE	\$25 (write for tickets at MOW Natl HQ)	Deborah Bell (800) 832-2889
Gay and Lesbian Parent Coalition International	Banquet and reception, activities provided for children during the dinner	6:30 PM - 9:00 PM	Hyatt Rosslyn, VA	\$10 (register at door)	Jim Fagelson (301) 762-4828
March on Washington Freedom Gala	Reception, Dinner, Speeches	6:30 PM - 12:00 AM	Ritz Carlton Pentagon City	\$250-\$500/person	MOW Natl Hdqtrs. (202) 628-0493
Asian & Pacific Islander Dinner and Social	—	7:00 PM	Tony Chang's Restaurant 519 H St NW (Chinatown)	\$35 pre-paid \$45 at the door	Gil Aurellano (301) 345-1230
Lesbian/Gay Bands of America Concert	A gathering of lesbian and gay bands from across America	7:30 PM	Warner Theater E & 13th Sts	\$25, \$20, \$15 (tix avail. at Ticketmaster)	(800) 551-SEAT (for tickets)

FRIDAY, APRIL 23

SATURDAY, APRIL 24

The March on Washington Events Schedule Continued

Event	Sponsor	Time	Location	Cost	Contact
AA & Al-Anon Speakers & Dance	Sponsored by 1993 Capital Round-Up and the Triangle Club	8:00 PM - 9:30 PM	The Market Place GWU	N/A	Wade P. (202) 797-1358
Harmonic Convergence	A Gay & Lesbian Choral Mini-Festival sponsored by the Gay Men's Chorus of D.C.	8:00 PM	Lisner Auditorium/GWU 21st and H St NW	\$22, \$18, \$11 (purchase from LR)	Lambda Rising (202) 462-6969
Evening of Jewish Lesbian Entertainment	Havdallah service followed by concert, sponsored by Bridges, a Journal for Jewish Feminists and Friends	8:00 PM	NY Ave Presbyterian Church 1313 NY Ave NW	\$10 (suggested)	Elly Bulkin (617) 983-5251
Tribute Players - Tribute to Memory of You	Sponsored by NAPWA	8:00 PM	—	\$8 - \$10	—
NGLTF Fundraiser	Romanovsky & Phillips, Margie Adams, Sponsored by NGLTF	8:00 PM	UDC Auditorium	\$18	Jeanette Paroly (202) 244-2163
Bisexual Dance	Sponsored by East Coast Bisexual Network (ECBN)	9:00 PM - 1:00 AM	GWU	N/A	ECBN (617) 247-6683
Gay Rites Dance	A benefit for HRCF/NGLTF/MOW	9:00 PM - 4:00 AM	Washington Hilton 1919 Connecticut Ave	\$22/\$30 (tickets avail. through Ticketmaster)	(800) 551-SEAT
Student Dance	Sponsored by GWU LGB Alliance and USSA	9:00 PM - 12:00 AM	GWU	\$8	Steven Raiche (202) 338-1582
Women's Dance	Sponsored by Bon Vivant	9:00 PM - 2:00 AM	Blossoms @ Old Post Office 1100 Pennsylvania Ave NW	\$10/nonmembers \$5/members	Katherine Windrex (301) 840-8402
March on Washington Party	Sponsored by Tracks	10:00 PM - (not closing)	Tracks	TBA	Ed Bailey (202) 488-3320
A Dance to Benefit Lesbian Health Care	Sponsored by The Mautner Project for Lesbians with Cancer	10:00 PM - 1:30 AM	GWU/Marvin Center 21st and I St NW	—	Carol-Ann Smalley (202) 332-5536
Prisoner Proxy Project	—	—	—	—	Jan Elliot (904) 378-3246
Celebration of Women's Survival	Sponsored by National Coalition of Feminist and Lesbian Cancer Projects	—	—	—	Susan Lindroff (510) 548-9286
Taps Ceremony - GLB Vets of America	—	—	—	—	Gene Barfield (305) 531-3534
Teach-in/Workshop Sponsored by Whitman Walker Lesbian Health Service	—	—	Whitman Walker Clinic	—	(202) 797-3585
Time to Shine: Day of Healing for PWAs	—	—	—	—	Bart Casimir (415) 255-8436
Historical Exhibit	(see entry for Wednesday, April 21)	—	—	—	—
Prejudice Reduction Workshop	(see entry for Friday, April 23)	—	—	—	—
Rainbow Alliance of the Deaf Conference	(see entry for Friday, April 23) Brunch	—	—	—	—
Pre-March Breakfast	Sponsored by GAYLAW & NLGLA	8:00 AM	GWU Marvin Center	—	Mark Agrast (202) 332-6920
Lutherans Concerned Service	Sponsored by Lutherans Concerned	8:30 AM	Augustana Church New Hampshire & V NW	N/C (donations)	Mike Carson (803) 356-0320
UFMCC Communion Service	Sponsored by UFMCC—service will include the communion and a christening	8:30 AM	Lincoln Memorial	N/C (donations)	UFMCC/LA (213) 464-5100
NAMES Project Quilt Display	Sponsored by the NAMES Project (see Saturday, April 24, for details)	10:00 AM - 6:00 PM	Natl Mus of Amer Hist or White House Ellipse	N/C (donations)	NAMES Project (415) 403-3627
Presbyterian Breakfast & Service	Sponsored by Presbyterians for L/JG Concerns-D.C. Janie Spar will give the address	11:00 AM	Westminster Presbyterian 400 I St NW	N/C (donations)	Bill Moss (202) 397-5585
THE 1993 MARCH ON WASHINGTON FOR LESBIAN, GAY, AND BI EQUAL RIGHTS AND LIBERATION					
Opening Stage and Assembly Rally		9:00 AM - 1:00 PM	White House Ellipse		MOW Natl. HQ (202) 628-0493
The March		12:00 PM	—		
Main Stage and Rally		2:00 - 6:00 PM	—		
Dance on Washington	Sponsored by America Foundation for AIDS Research (AmFAR)	7:00 PM - 2:00 AM	Natl Building Museum Grand Hall	\$25 (tickets avail. through Ticketmaster)	(800) 551-SEAT (to order tickets)
MCC Evening Service	Sponsored by UFMCC	7:30 PM	Lincoln Memorial	N/C	UFMCC/LA (213) 464-5100
Divas Simply Singing	A gala event, sponsored by the NMAC, featuring Thelma Houston, Melba Moore, Liz Torres, Dionne Warwick, and many more	7:30 PM	Warner Theater	\$25 - \$20,000	Ellen Goodman (202) 544-1076
Guys and Dolls	Sponsored by the March on Washington (reception follows performance)	8:00 PM	Kennedy Center	\$100 (includes reception with cast)	Jaime Rodriguez (202) 628-0493
Freedom Rings Dance	Sponsored by NGLTF	9:00 PM - 2:00 AM	Washington Hilton	\$20/\$30 (tickets avail. through Ticketmaster)	(800) 551-SEAT (for tickets)
Missing In Action	Sponsored by Missing in Action Committee	All day	The Mall	—	Danny Blitz (212) 853-3908
Lesbian Physicians Conference (April 25 - April 28)	Sponsored by the American Association of Physicians for Human Rights	—	—	—	Lydia Vaia (215) 476-7462
Wreath Laying at the Tomb of the Unknown Soldier	Sponsored by Gay, Lesbian, and Bi Veterans of America	—	—	—	Gene Barfield (802) 479-7934
March Volunteer Thank You Reception	—	—	—	—	(202) 628-0493

SATURDAY, APRIL 24

SAT., APRIL 24

SUNDAY, APRIL 25

DON'T MISS THIS ONE!

Washington DC APRIL 25, 1993



DON'T MISS THIS ONE!

Washington DC APRIL 25, 1993

Wisconsin Marchers To Meet in D.C.

Because of potential last minute alterations to MOW's line-up procedure, **Light** and **In Step** have decided to ask all Wisconsin participants to meet at the park across from Constitution Hall located at 17th N.W. and C Street N.W. The papers ask all Wisconsin Marchers to meet at that location between the hours of 9:00 a.m. and 10:00 a.m. on March Day, April 25. By 10:00 a.m. we should be able to find out our exact line-up location and we will then proceed to that assigned spot.

There will be highly visible banners Milwaukee, Madison and Wisconsin banner designating our location.

MARCH Continued from Page 7

Nevertheless, Smith said, "The March is a chance to let the White House and the rest of the country know that we have demands and that we want to have them met, that we're on the outside and we want to be let in."

The Route of March

Originally MOW planners wanted to use the Ellipse as a staging area for the March. However, the Park Service nixed that idea because of reseeding going on there. MOW was advised to use city streets and create two parade routes, one from the Pentagon and another from the far east end of the Mall that would

converge on the Washington Monument grounds. That has changed.

MOW spokespeople told **Light** that marchers would assemble on the Mall around the Washington Monument. From there, they will march to the Capitol. (Please see map, this issue.)

In addition, MOW says that there will be a March information booth at the airport as well as information booths at strategic locations around the city.

Bisexual Visibility

According to MOW, the March will

include "the largest gathering of bisexual men and women" in history. Bisexual events during the March weekend include the annual meeting of BiNet USA at George Washington University and a Bi Erotic Reading at American University.

On Saturday, participants will gather for an all-day conference celebrating bisexuality followed by a Bi-dance held in conjunction with the U.S. Student Association of George Washington University.

Going to the March on Washington?



Proudly Carry A 3' x 5' GAY RAINBOW FLAG

or a GAY AMERICAN FLAG (Rainbow Flag with 50 Star Field)

We Have Both Flags In Stock \$24.95 Each

(Wisconsin residents add \$1.37 sales tax per flag) On sale at the address below or by mail order (Mail orders add \$2 per shipping per order)

The Wisconsin Light 1843 N. Palmer, Milwaukee, WI 53212 414-372-2773

Freedom Reigns

AT THE D.C. ARMORY

A Dance Benefiting the
March on Washington
Join over 10,000
brothers and sisters
at the Largest Dance during
March on Washington Weekend

Saturday
April 24, 1993

The D.C. Armory
2001 East Capitol St., Washington, D.C.

Special Guest National Recording Artists

Ce-Ce Peniston

In A Full Band Concert plus...

Sabrina Johnston
"Peace In The Valley"

8pm -2am

Tickets \$30 Available Through
TicketMaster Nationwide
Call (800) 551-SEAT
\$35 At The Door If Available

MUSIC J.D. ARNOLD/JON MOTT
LIGHTING DESIGN GARY ARCHER
VISUAL DESIGN DAVE HEMMER
ARTWORKS HOWIE KECK
PHOTO TOM BIANCHI
GRAPHICS PAUL ENGLAND

Madison Judge Race: Gaylord Can Advocate For Gay, Lesbian Families

Second of two parts
By John Quinlan

[Madison] - If Shelley Gaylord makes history on April 6 by becoming Wisconsin's first openly Lesbian or Gay judge, it won't be the first time that she's done pioneering work for our community in the legal arena.

Gaylord, whose overall record of achievement as a litigator has earned her an impressive slate of endorsements in the race for Madison Municipal judge, has a national reputation because of her advocacy for Gay and Lesbian families. Last year, she was a featured presenter at the national Lavender Law Conference in Chicago.

"I've done all of the nuts and bolts things in terms of Gay and Lesbian relationships," Gaylord explained during an interview at her near east side home. "I've represented Gay and Lesbian people who are married and getting divorced. I've worked with Gay and Lesbian people who want to have children with their partner and helped them arrange that. I've dealt with wills, powers of attorney, custody on break-up, the equivalent of Gay/Lesbian divorce, domestic abuse... everything."

Gaylord was the Family Law chair of former Governor Tony Earl's Gay and Lesbian Task Force. She has brought her perspective as an openly Lesbian attorney and activist to a variety of other assignments. Chief Justice Nathan Heffernan, of the Wisconsin Supreme Court, appointed her to his Equal Justice Task Force. She has also served on the Dane County Bar Professionalism Committee on Civility.

"Pretty much anytime I've served in any role, whether it's been explicitly Gay or Lesbian-related or not, I've brought up Gay and Lesbian issues," she said. "So when I deal with family law, I bring up a Gay and Lesbian perspective... Because people forget. They tend to think of things in exclusively heterosexual terms. And it's important to have someone say that 'all of the things you've just talked about are nice, but they don't really match with Gay and Lesbian experience,' or 'the generalizations you're making don't fit.'"

Exploring New Legal Territory

Wisconsin's decision, in 1983, to be the first state to add sexual orientation to its list of protected classes has allowed Gaylord to explore some exciting new legal territory. However, many legal barriers still stand in the way before Gay and Lesbian families are given equal treatment under the law.

"You run into these circular arguments," she said. "You can't be a parent or get benefits because you can't get married, and that's not our fault."

She cites as an example the legal arguments against extending health insurance benefits to Lesbian and Gay partners. "We have a law that says you shouldn't discriminate based on sexual orientation, and a law that says you shouldn't discriminate based on marital status. And it should be obvious that if you extend an employment benefit like health insurance to married people that you don't extend to unmarried people, you are paying the married people more and that is unfair discrimination."

A recent example of this was Gaylord's advocacy in a case brought by state employee Jerri Linn Phillips who sought to include her life partner, Lorri Tommerup, on her health insurance. Gaylord successfully documented the fact that the Lesbian couple's relationship was analogous to that of a married

heterosexual couple's in virtually every significant way.

Despite this, Gaylord said, the court's decision, which went against the couple, "boiled down to things like 'the legislature couldn't have intended this.' Well, what do you mean? They intended to get rid of discrimination. But they're saying they didn't. They didn't intend to get rid of 'privilege,' essentially."

"In general, what they say is that when the ordinance about marital status discrimination was passed, married people were getting these benefits and unmarried people were not, so the legislature must not have intended to change that. Well, that's like saying that there were Jim Crow laws, and as soon as you passed anti-discrimination laws, they intended to keep the Jim Crow laws. That's not a real argument; it's a rationalization."

Legislative Solutions

I asked Gaylord about what kind of legislation she thought should be passed in order to achieve equity for Gay and Lesbian families. Knowing of the depth of her belief that Gay and Lesbian relationships were just as legitimate as heterosexual ones, my assumption was that she wouldn't want to support legislation that represented anything less than full parity for Gay and Lesbian couples. However, she responded with a more politically pragmatic and incremental approach.

"In terms of what to do, my response to that is, life is the art of the possible. Do whatever you can, whenever you can. Get it. Get the benefit. Worry about whether something else is going to come down the road about your particular theory later."

"Do you want to have Gay marriage? Do you want to have domestic partnership? I think that people can debate that until the cows come home. What I say is, if you can get the political capital together to get either one of those passed, pass them."

Gaylord is expected to be an important participant in the discussions that Rep. Tammy Baldwin will be holding with attorneys and community leaders in deciding the form of the domestic partnership legislation she plans to introduce later this year.

"They may be imperfect, but I think when you're talking about a population that is as unrecognized and underserved as this population, it's like talking to a starving person. You don't argue about a half a loaf. You take a half a loaf so you can sustain yourself and then move on."

"Look at the lifetime of a human being. It's relatively short. And I think that to say to people, 'Well, we're going to suffer for two more generations because this is only half a loaf,' I think that's nuts. I think that it's very important to help people so that they can help other people who can then solve the next round of problems that come up. There will always be problems to solve. And we have to sustain ourselves somehow."

A "Child-Focused" Approach to Parental Rights

Current law offers no recognition of the parental rights of the Gay or Lesbian partner of a child's non-biological parent, even though they are that child's co-parent in every significant way. Wisconsin will also not allow two people who are not legally related to adopt a child together; one Gay or Lesbian partner must go through the motions of a "single parent" adoption, even though that denies the reality of their partner's relationship with the child. Gaylord believes that the current system must change to recognize the child's reality.

"I think in general what has to happen is that it has to be more child-focused, less parental-focused and more child-focused... If a child has a very substantial relationship with some adult, I think that it should be possible to have that reviewed to determine what's in the child's best interest for continuing that relationship."

"As things stand right now, you can't get the people into court to have that looked at. You're just cut out, you're just obliterated. And I think that's what's wrong is that it is not individualized enough."

Gaylord says that, following human nature, the courts tend to want to keep things as simple as possible. "Let's use marriage, let's use biology as the standard." Instead of psychology. Because what I'm talking about is a psychological bond. It's very grey. But it's extremely important. It's very damaging for a child to cut them off from someone who they knew as a parent. I certainly don't think that there should be a complete and utter barrier to doing that, which is basically how things stand right now."

Gaylord, whose docket will include a large number of truancy cases if elected, has had extensive experience in working with family law and with children as a court-appointed guardian. In part one of this interview, she spoke of being excited by the prospect of making a difference in the lives of the children who appear before her.

This is reflected in her desire to include children in her personal life. "There have been substantial periods of time when I have lived with children... It was important for me to live in a household where there were children. The most profound experience of my life is that I come from such a large family and I desire that lifestyle."

Running Openly as a Lesbian: Weaving It In

In many other parts of the country, the press has responded to openly Lesbian or Gay candidacies by focusing in on the openly Gay aspect of the person and ignoring the numerous other qualifications the person brought to the job. As I write this, the press has downplayed the openly Lesbian aspect of Gaylord's candidacy almost completely, as evidenced by the absence of any mention of its significance in a recent Capital Times editorial endorsement.


For the most part, the press had been fairly good at keeping the openly Lesbian aspect of State Rep. Tammy Baldwin's campaign in proper perspective. It received mention, but in the context of Baldwin's pledge to introduce civil rights

legislation for the Lesbian and Gay community. One exception was a pre-primary editorial summary in the Wisconsin State Journal which described Baldwin as "the most politically correct candidate" because she was running as an open Lesbian. It said nothing about her qualifications, in stark contrast to the profiles of her opponents.

With this example in mind, I asked Gaylord how she would like to be portrayed. "I think that I would weave it in as an important experience that is a qualification. But it is one among many. I think that when you're comfortable with your sexual orientation, that it's not necessarily the first thing that you think of in terms of your life. It's certainly part of what I live and breathe. But I am many things."

"I think that it's important to be who you are. But I think that it's also important to be everything that you are."

For Gaylord, that means bringing a diversity of talent and experience that would serve her well if elected. As the Light editorialized in its previous issue: "Following in the traditions of Wisconsin's openly Lesbian and Gay politicians, Shelley Gaylord exemplifies the high caliber of candidates that our community has to offer. It is with great pride that we urge you to do everything possible to make history by electing Shelley Gaylord as Madison Municipal Judge on April 6."



**Gay, Lesbian,
Bi-Sexual Veterans
Of America
Southeast Wisconsin
Chapter**

Are You a Veteran?

Please join us at our next meeting:
Thursday, April 29 — 7P.M.
at the
M&M Club (upstairs)
124 N. Water St. Milwaukee

For additional information
call Bob at (414) 744-0343.



**M&M Club
Milwaukee**

**Lunch ~ M-F ~ 11:30 ~ 2:30
Sat. ~ noon ~ 3
Sun. Brunch ~ 11 ~ 4
Dinner ~ nightly ~ 5 ~ 11**

Major Credit Cards Accepted!

124 N. Water St. 347-1962

Dykes To Watch Out For

**2
minds**

No one in Clarice & Toni's baby group has had an actual baby yet, so our mothers-to-be are visiting a more established gathering in search of guidance and inspiration.



POLITICALLY SPEAKING

It's Time To March in Washington

Last November we marched to the polls. Now this April we have to march to Washington.

There are those in the federal government who would deny us what we won at the ballot box. They say the American people couldn't care less about us. They claim that we are so few in number that we can be ignored. "Why," they ask, "should the Federal government spend time and resources on such a small group?"

Its time to answer them. Its time to answer them in a way that even the most cynical among them can not ignore. On April 25th, we will give them that answer.

April 25, 1993 will be a historic day. On that day an expected 2,000,000 Gays and Lesbians will march through the streets of Washington for Lesbian and Gay rights. From Alaska to Maine, and from California to Florida, hundreds of thousands of Lesbians and Gays along with those supporting equality for Lesbians and Gays are preparing to join together in a united plea for justice.

If you have ever wanted to be part of history, then come to Washington. This march will be biggest march ever seen in our country.

If you want to remind the President of his promises to us, then come to Washington. Nothing will remind Bill Clinton of our role in putting him into office better than two million voices parading past the White House.

If you want to show Congress that despite all of the phone calls they have received from the fundamentalists, there is a solid support for lifting the ban on Gays and Lesbians in the military, then come to Washington.

If you want to send a message to the federal government that we are impatient with its progress on the AIDS crisis, then come to Washington.

March for those who are too sick to march. March for those who can not come. March for yourself.

This march will be so large that no one in office will be able to ignore it. This march will smash the belief that we are so few in number that we can be safely ignored. This march will expose the lie

that we are politically impotent.

We shouldn't have to do this. But in politics it's not a question of what you should or should not have to do, it is a question of what you will and can do.

We need this march. We need it to galvanize our resistance to people like Sam Nunn. We need it to make those who follow him and his fellow bigots like Jesse Helms think twice before they write us off.

More than anything else politics is a game of numbers. Senators and Congresspersons know that. They also know that it is easy for one person to make twenty phone calls promoting bigotry, but that people in a march only get counted once. A million Gays and Lesbians marching past their offices demanding justice can't be ignored, swept aside as a fluke or dismissed as some sort of trick.

This is our chance, lets not blow it. We put Bill Clinton into office. We expected great things from him. Perhaps he will still be able to deliver them. The events of the last few months have shown, however, that he will need our help. The election in November wasn't the end of the struggle, it only opened a new chapter.

Now we must continue to write that chapter. We must regain our momentum. There is no better way to do that than to present the nation's capital with the biggest demonstration it has ever seen.

Take a bus, a train, a plane or get together with some friends and come by car. Come for the day or the weekend, but come. Don't miss being a part of this. Buses are leaving from Madison and Milwaukee. Many of us are traveling on our own. Ask around and you will find someone who is going. Put together your own carload if you have to, but come.

It's time that we made it clear that we will control the agenda. It's time that we showed the world that we will no longer tolerate being second class citizens in "the land of the free." It's time to stop relying on others to make our case to the American people. It's time to make that case ourselves.

It's time to march on Washington.

FRESH NUTRITIOUS Food...



Food SERVICES PROGRAM

FOR PEOPLE WITH HIV DISEASE

- HOT MEAL PREPARATION
- GROCERY DELIVERY
- FOOD PANTRY
- HOLIDAY DINNERS
- SHARE PROGRAM

WE CAN PROVIDE YOU WITH FRESH, NUTRITIOUS FOOD.

MILWAUKEE AIDS PROJECT
(414) 273-1991

SOUTHEAST WISCONSIN AIDS PROJECT—KENOSHA
(414)657-6644



AIDS RESOURCE CENTER OF WISCONSIN, INC.
P.O. Box 92505
MILWAUKEE, WISCONSIN 53202



Jerry Johnson

A sold-out, record breaking crowd of 975 people raised \$83,500 at the Make-a-Promise Dinner in Milwaukee at the Historic Pfister Hotel grand ballroom.

NAMES Project AIDS Quilt On Display in Oshkosh April 29

[Oshkosh, WI]- A flurry of activity is scheduled for the final weeks leading up to the display of the NAMES Project AIDS Memorial Quilt in Oshkosh. The Quilt will be displayed at Kolf Sports Center on the University of Wisconsin-Oshkosh campus from April 29 to May 2, 1993. A series of fundraisers is planned.

April 18, Sunday: "Art's Desire," a silent art auction at the Granary in Oshkosh. Works by Wisconsin artists, antiques, hand made quilts, exotic desserts, coffee and wine. 4:00 p.m., \$7.50 advance, \$10 at the door.

April 25, Sunday: Performance by Northern Lights, a Green Lake folk group, in the Downunder Room, Reeve Union, on the University campus. Sponsored by UWO Women's Center. 6:00 p.m. Admission \$7, \$5 students.

Area residents who have lost loved ones to AIDS are busy completing panels to be presented during the display. Each 3 by 6 foot panel is as unique as the person being remembered and reflects the love and pain of affected family and

friends.

The opening ceremony will take place at 6:00 p.m., Thursday, April 29. The names of those remembered in the Quilt will be read by local people who have been personally affected by this disease. The names will then be read continuously during the four days of the display.

Friday, April 30, has been designated "Youth Day" and classes from area schools have been invited to attend.

The closing ceremony is slated for 3:00 p.m., Sunday, May 2. New panels will be formally added to the Quilt and the sections will be folded.

Display Hours

Thursday, April 29: 6:00-10:00 p.m.
Friday, April 30: 8:00 a.m. to 8:00 p.m.
Saturday, May 1: 10:00 a.m. to 8:00 p.m.
Sunday, May 2: 10:00 a.m. to 3:00 p.m.

To volunteer, call Jack Talbot, (414) 235-7883 or (414) 424-4090. To make a panel, call Judy Pope, (414) 733-3537.

Kick Off DC March With United's March on Hotel Washington

[Madison]- One week before a million of us descend on the District of Columbia for the long awaited March on Washington, a much smaller, but extremely lively, group will arrive in Madison for the "March on the Hotel Washington." No marching involved, actually, but whether arriving by car, on foot, or by bicycle, all are invited to the New Bar on Saturday, April 17th from 4-8 pm for a benefit for the Madison Community United.

The United, which will be celebrating its 15th anniversary at a gala dinner in early June, is Wisconsin's only social

service/social action agency serving the needs of Lesbians, Gay men and bisexuals. It's a chance to get down and dance to some great music in celebration — whether you'll be at the Washington March in person, or, just as importantly, there in spirit.

Hors d'oeuvres will be served and there will be a cash bar. The United is asking for a \$5-10 donation. The New Bar is at 625 W. Washington Avenue. For more information, call the United at (608) 255-8582.

LETTERS

Gays In Military

TO THE EDITOR:

I have listened, perhaps for too long, in silence to the debate surrounding the compatibility of homosexuals in the military. The recent delay in establishing a new policy at least allows for a more calm, considered discussion of the subject. I hope I can provide a first-hand perspective that generals, admirals and social activists have not.

Political and social beliefs aside, in this issue my concern is for the good of the service. I served a six-year enlistment in the U.S. Navy, most of that time at sea.

As the debate resumes, please consider:

1. **The policy divides the service.** And this issue will continue to divide the armed forces until it is finally and definitively put to rest. There are, always, always been and there will always be homosexuals in the armed forces. The only logical step is to render the private, consensual, off-base habits of armed forces personnel a complete non-issue.

2. **The policy wastes the resources of the service.** These witch hunts, prying into the private lives of otherwise productive members of the armed forces, are both a fiscal and political drain for the Department of Defense. Cost of enforcement aside, this policy represents a pointless distraction from the mission of the armed forces.

In addition, it is a waste of talent and training. I have known some fine sailors, with years of expensive training and experience, with actual demonstrated value to the Navy, who were needlessly discharged because of an arbitrary, frivolous policy that has no actual demonstrated value to the service.

The policy corrupts the morale of the service. Banning or limiting the service of homosexual personnel trains dedicated young men and women to lie with amazing facility. Worse than being uncomfortable with the possible advances of your shipmate, be more afraid of how well his situation has taught him to conceal and deceive.

The defense of this policy injures the credibility of the military. When the military stridently resists a change mandated by the civilian government, it sends disturbing ripples through one of our most basic principles: military subordination to civilian control.

Moreover, the military's defense of the current policy has appeared pathetically bumbling, putting forth embarrassing, inept and insupportable arguments. Instead of citing morale, security or how to handle social functions, the military would have gained more respect by honestly saying, "We just don't like 'em."

The policy promotes violence against the innocent. As recent incidents in North Carolina and Japan point out, official sanctions can provide some individuals with presumably endorsed targets for harassment and violence. But hate and violence, once set in motion, tend to lack the fine distinctions that writers of policy may possess: not one of the men I saw harassed or assaulted for alleged homosexuality during my tour of duty turned out to be Gay. They were just different, and therefore, became victims.

More than ever, we need reasons to work together, rather than excuses to define ourselves by differences.

The parallels between this situation and the move to desegregate the armed forces in 1947 are striking. The military is even using some of

the same arguments. But separate facilities, separate units and separate duties are no more of a solution today than they were 45 years ago.

What seemed like a bold step then, is now viewed as the overdue correction of an archaic and counter-productive rule. Although the record appears to slight the courage and tenacity such a change requires, please, Mr. President, do not lose your resolve to see this through. Sometimes, making history simply consists of ensuring that what is correct, what is right and what is inevitable occurs more or less as it should.

— Robert Davolt
Madison

Editor's Note: A copy of the above letter has also been sent to President Clinton

Lobby Kohl

TO THE EDITOR:

With hearings now underway, it is of the utmost importance that our Wisconsin legislators hear directly from as many members of the Gay community as possible concerning the Gays in the Military issue. This applies to currently serving members of the armed forces, veterans and civilians, alike.

We can be sure that our bigoted opponents will be mobilized to defeat this effort, because they realize what a dramatic change opening the U.S. military to Gays and Lesbians will bring about, and how important this issue is to all of us.

As a six year veteran of the U.S. Army (Active and Reserve), I took it upon myself to write letters to the entire Wisconsin Congressional delegation, the President, and Chairmen Dellums and Nunn. It would appear that Senator Feingold is already quite convinced of the justice of our cause.

His letter to me of February 26 stated, "I support rescinding the ban against Gays and Lesbians in the military;" and "I have co-sponsored S. 71, legislation which would prohibit discrimination by the armed forces on the basis of sexual orientation."

My letter from Senator Kohl was less encouraging — he has yet to make up his mind.

In part, he stated, "I am hopeful that a policy can be developed which will recognize both the requirements of military service and the right of military personnel to have a private life when not on duty."

He went on to say that, "I will be following the hearings closely and look forward to evaluating the recommendations developed by the Committee, the Secretary of Defense and all other interested parties." This letter was dated March 3.

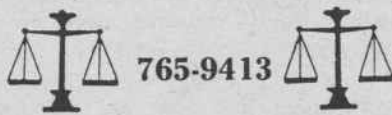
It's clear that our collective and individual lobbying efforts must be directed at Senator Kohl who, while seemingly sympathetic, remains noncommittal. Not only that, but the President's recent, shocking pronouncements that he might consider some sort of segregated status for Gays and Lesbians in the armed forces has shown just how tenuous and susceptible his real position is: even he can't be taken for granted.

I urge every one of you to call or write your Congressman and the President within the coming weeks and months, and I urge both **In Step** and **Wisconsin Light** to keep those addresses and phone numbers within their pages until we have won this vital battle for our freedom.

— John Arthur Jahn
Milwaukee

DIRECTORY OF PROFESSIONALS

Thomas E. Martin
ATTORNEY AT LAW
General Practice of Law
Fifteen Years Experience



765-9413

SHARON MAHOS
MASSAGE THERAPIST
LICENSED — CERTIFIED

Specializing In Massage
Therapy For Women

- Stress Reduction • Facials
 - Relaxation • Pain Relief
 - Neuro-Muscular Therapy
- 414-769-6242

Serving the Lesbian and Gay Community.

PROCKNOW
ATTORNEY AT LAW

Domestic partner protection (wills, power of attorney, etc.), Unemployment Compensation, Equal Rights, Family Law, Landlord/tenant, and Social Security disability.

Home Visits Arranged

Call Deb Procknow (414) 769-7265

OFFICE HOURS BY APPOINTMENT



THEODORE I. FRIEDMAN, Ph.D.
COUNSELING PSYCHOLOGY

Private, discreet services in a non-medical setting, by a highly experienced professional.

Suite 206, 2266 N. Prospect Avenue
MILWAUKEE, WI 53202; (414) 272-2427
Suite 2506, 55 E. Washington
CHICAGO, IL 60602; (312) 726-5241

BESTD
C.L.I.N.I.C

1240 East Brady Street • Milwaukee, Wisconsin

HIV Counseling and Testing
Sexually transmitted disease diagnosis, testing and treatment
Alternative Womens' Clinic
HIV Support Group
Call for Information and Appointment
272-2144

ELECTRONIC FILING

Get your refund in about two weeks!
We will file your return electronically whether you prepare it or have us prepare it. Electronic Filing \$20.00 Tax Preparation \$25.00 and up depending on forms and schedules. 10% to AIDS Prevention.

Ambelang Tax Preparation
933-1572

BOTTOM LINE TRAVEL

964-6199 or 800 933-8330

GAY OWNED & OPERATED

CONTINUING TO SERVE
OUR COMMUNITY

MEMBER: I.G.T.A.

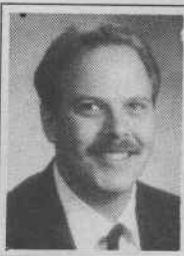
3610 N. OAKLAND AVE.

Portrait Photography

Business • Personal
Passports
Old Photographs
Copied & Restored
Theatrical
Pets

Breitlow Studio
7405 West Harwood Ave.
Wauwatosa, WI

476-3777



Alan Strozak
Realtor®

Moving across town?
Moving across state?
Moving across country?

I have the answers to your relocation concerns.

COLDWELL BANKER
SVEUM REALTORS®
2817 Fish Hatchery Road
Madison, WI 53713

REAL ESTATE

IF YOU ARE BUYING OR SELLING,

PLEASE CALL ME:

DAVID CHESTER

(414) 964-3900

10% of my commission at closing will be donated to the AIDS charity of your choice when you mention this ad.

Lake Drive Tudor— Looks like a page out of Architectural Digest.

Knickerbocker Condo— Grand New York style, coupled with generous room sizes, top flight restaurants in your lobby, and an out of pocket cost of less than \$800 per month adds up to solid value.

Carriage House Condo— This sophisticated & unusual East Side unit (located behind Stone Henge) features 2 bedrooms, 2 bathrooms, 3 exposures, gorgeous hardwood floors, natural millwork, modern kitchen, plus circular stairs to loft bedroom & bath. A superior value at \$97,500.

Prime East Side— Smashing 3 level townhouse condo with private garden & heated parking. Walk to Coffee Trader & Sendiks. Loaded with costly upgrades.

**Federated
Realty Group, Inc.**
We're your home team.

6000 N. Port Washington Rd., Milwaukee, WI 53217

S&M Arts and Leathersexuality Column Begins By Defusing Myth

By Dieter Fuchs

As a confirmed leatherman, I've been asked by the *Light* to contribute a series of informational columns on the SM arts and leathersexuality. In these first few issues, I'll explore basic SM concepts before moving on to more specialized areas of the lifestyle. And with each column, I'd like to attempt to debunk one myth that confronts the SM community, as presented to us by other Gays and "straight" society.

Since much of the SM world involves fantasy and the world of make-believe, allow me to confess what you probably already have guessed: my nom de plume, "Dieter Fuchs," is not my name as recorded on my drivers license.

It is a pen name and serves two purposes: one, it protects my desire to write about the "sexual underground" with my right to privacy undefiled and, two, it creates for me — and you — a fantasy role from which we can, together, explore the "sacred mysteries of the sacraments" known as the SM arts, leathersexuality, leatherspirituality.

I'll begin with the basic premise that most Gays are interested or are, at least, curious about SM, but may not know much about the lifestyle. And what is known, may, in fact, be part myth/part stereotype.

SM, S and M or "Sado-Masochism" refers to a sexual, emotional and/or spiritual relationship between two (at times more) partners where there is a dominant-submissive component. The giving and receiving of pain — along with the fantasy that is being acted out, should give all involved pleasure in a genuine SM scene.

Each of the partners should know each other fairly well, as to interests, limits, any health problems (e.g. HIV status), and there should be a sense of mutual trust.

For SM to be pleasurable, each of your limits should be understood and established prior to a scene and then communicated and respected during the actual scene itself.

SM, as in all sexual situations, must be an activity that seeks to give both partners/all participants pleasure, so therefore, it must be consensual. All possible safety concerns need to be addressed.

Myth

"All men 'into SM' are old social misfits."

This stereotype can be debunked by going to any leather bar. Whether I've been at The Men's Room in Minneapolis, The Outpost in St. Paul, or Ruds in Madison, I have individually met, shot pool with, guzzled tap beers with, partied with and have even (less frequently) tricked with elementary school teachers, psychologists, attorneys, nurses, realtors, accountants, in their 20's to age 60 and up.

Truth

As members of America's greater "10% society," we Gay SM/Leathermen also represent all socio-economic and educational levels and we are of all ages, careers and backgrounds.

EROTIC GROUP ACTION
GAY & BI-MEN
TALK OR JUST LISTEN

1-800-934-DUDE
3833

\$2/Min. 18 Plus
No Credit Card Needed

WISCONSIN
MEN SEEKING MEN

1-900-903-MALE

Real phone numbers
from real men!

\$1.99/min. 18+, 415-281-3183

**I'VE
GOT
IT!**

**CALL NOW!
TALK LIVE!**

1-900-LOVE-MEN

BILLED TO YOUR TELEPHONE

1-800-666-9666

BILLED TO YOUR VISA OR MASTERCARD

Billed As "Real People" • Must Be 18 Or Older • Prices Subject To Change Without Notice
\$3 Per Min. • Touch Tone Phone Only • ©1993 Real People, Ltd.

FULLFILL YOUR FANTASIES
LIVE
PARTY LINE



**NO CREDIT
CARD NEEDED**
Find out how!

1-800-876-8477

Mature Adults Over 18 Only.

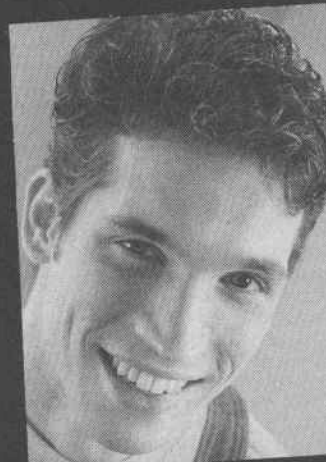
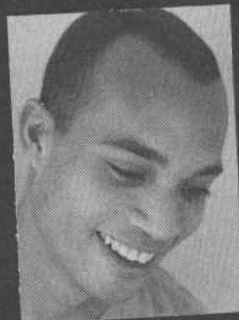
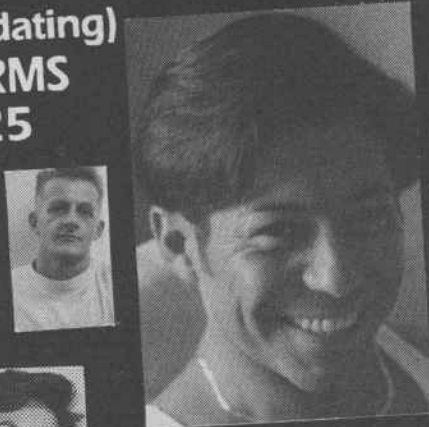
GJ-20

WISCONSIN Phone
Personals

ONE phone call. Over **1000** Men.

Meet the boy next door in our local Wisconsin section. Or search the country for your type of guy in one of our specialty categories of "talking personals." Respond to over 1000 gay/bi ads! Record your own local and specialty ads today!

FRIENDSHIP (non-dating)
MILITARY/UNIFORMS
YOUNG/UNDER 25
PHONE FRIENDS
INEXPERIENCED
BODYBUILDERS
RELATIONSHIPS
BLACK GUYS
TVS/X-DRESS
MARRIED/BI
WRESTLERS
COUPLES
LEATHER
LATINS
ASIANS
BEARS
HAIRY
HIV+
40+



1-900-454-3325 \$1.25/min.

Must be 18; Touch-tone Required; Paradise Enterprises, P.O. Box 19149, Washington, DC 20036

'Claire of Moon' Director Interviewed

CLAIRE
Continued from Page 6

N. I agree...that PC stuff is very inhibited in terms of creative outlet. In fact I asked this interviewer in San Francisco how do we bridge the gap between a Lesbian who is not PC, who is an entertainer essentially with somebody who is PC who believes every movement you make is a political statement. She was baffled and said, "I don't know" and I said, "I don't know either but I think a part of it is unconditionality." Like live and let live.

M. Women I have talked to have said that they were so tense at the end of the film... I feel that with Lesbians there is a tendency to do a relationship dance of coming and going... I had read that Claire was based on someone in your real life. How important was it to present a story where there was this tension and difficulty of coming together?

N. Claire in some ways is an exorcism of a relationship I had with a straight woman that I lived with for three years and we never touched each other. Talk about tension... Another part of Claire is me. That was my struggle with my Lesbianism. I was a raving alcoholic. I went back and forth between men and women more times than I care to remember. I just could not cope or deal with it and so it's a combination of an exorcism of an ancient history relationship and myself. And I think that Lesbians, do do this dance and a lot of people recognize it for that and yes they're teased but that is part of the fun of the film. Everyone pretty much knows they are going to get into bed, it's just a matter of when. I think when they stop looking for that they can watch the film on a different level.

M. I saw it twice and I have to admit that I liked it better the second time. I was just more relaxed.

N. We have been taking counts and it seems that the fourth time is everyone's favorite. I don't know why that is or what it means but I think the first time it is very tension filled for people. I think after that they really start watching the nuances of the story.

M. I had one problem with the film and that was that the other writers came close to borderline parody. Especially the southern one.

N. She was definitely played for camp. It wasn't a well executed idea. Our rough cut was 2 hours and 40 minutes long. When I chose to go with what I needed to tell the story I wanted to follow Claire's journey. That was essentially the story for me. So I ended up slicing the supporting characters to shreds and a lot of that is simply that I was naive in my first venture out...

M. When it comes to the nuances. I read two reviews by male writers and I felt that they didn't get it. What I believed they didn't get was the nuance.

N. A lot of men aren't going to get the nuance, period. Simply because they are not going to get it. End of story. A lot of people don't get the nuance because they are not aware of nuance in their general daily lives... A lot of people go into this film and don't like it all. They don't understand anything that I'm trying to do. They don't understand why I made the movie. One of the comments you made in your article which I really loved was about the scrutiny. I feel like in the terms of our community there was been this magnifying glass that was invented by NASA because no other film is looked at like this. People go to a movie and they like it or don't like it and then they go out to dinner and discuss it for about 15-20 minutes and go on with their lives. With Claire, they either really, really love it or really, really hate it and they end up talking about it for days and days. Some of the vicious attacks have been unwarranted in some cases but if nothing else Claire does start dialogue and that is partly because it is the first film to be released since Desert Hearts but it's not like a mainstream feature. Its just not o.k. to be a film and has to be this other thing.

M. When it comes to nuance, part of it is just an understanding of the community or having the inside information as opposed to straight viewers. As a filmmaker did you consider that?

N. I've seen this in packed Lesbian houses and this film is a whole different experience than when you go to a regular movie theatre and its half straight people and half Lesbian. When you are in a Lesbian house the Lesbians get all the humor because its our community and we're laughing at ourselves in a lot of

cases. Straight people tend to take this film so much more seriously. You can have an extremely serious viewing of this film. You can hear a pin drop during the entire film with the exception of a few pieces of laughter. I did not go for letting people be comfortable. Maggie said a line, "If you eat pussy, you eat pussy." I argued with my editor and my producer for three weeks about keeping that line in. I said that's Maggie's character and that is what she would say. That is the bottom line of this entire film. They were like you're going to totally alienate your audience and I was like I didn't think I was going to totally alienate the audience.

think that they are either going to feel uncomfortable with it because of their own issues or they're going to get it. One of the two. It was probably, maybe stupid from a marketing standpoint but I just couldn't see cutting some of those things...

M. When it comes time to focus on a new piece what would you like to do next?

N. I have six other screenplays. Four, which are mainstream women's features and the others are two Lesbian features. One is contemporary and one is a period piece. The period piece is the love of my life. Its called Cynra. Its like a Howards End meets The French Lieutenant's Woman to quote The Player. Its about a woman's struggle with her artistic integrity paralleled to another woman's struggle with her sexual integrity and it takes place in Paris in the '30s. I think its my best script but I didn't want to make that first because I wanted to learn more about what I was doing. And secondly, it requires a \$3 million dollar budget, 10 times the budget that Claire was.

M. What comments have you received about Claire that has made you believe that it was all worth while?

N. Easily, coming out of screenings having Lesbians come to me and grab my forearm with tears burning out of their eyes and saying, "Thank you so much." The fan letters we get saying how it has touched their lives. Things like they have fallen all over in love with their partner to it touched them on a deep emotional level. They felt something for the first time in years. Things that are life changing. To me the film is highly, highly successful in that end and in from the standpoint that people just really enjoy it and get the opportunity to see their lives on the screen whether they relate to the two main characters or not.

M. Any other comments?

N. I urge the community to realize that this is one women's story and I really thank the community for supporting us with such open arms. I have been extremely touched by that.

Naid Press will be publishing the novel in June. Claire posters, cassettes, CDs, clothing, and "moments" videocassettes are available through Demi-Monde Productions by calling 1-503-436-0938. Claire's Jaguar will be given away through a promotion when the Claire video is released either in November or January.

MARQUETTE Continued from Page 1

affirmative or negative statement regarding the inclusion of sexual orientation in the University's anti-discrimination policy; 2. A meeting, within the next 10 days, to formulate a place for the inclusion of Gay, Lesbian and Bisexual people at Marquette.

Some 50 minutes later, DiUlio delivered his response.

It said in part, "the University will not include the words 'sexual orientation' in its written anti-discrimination policy." The reason given was that "legal reasons connected with the recognized right of church-related institutions to govern themselves in accordance with their religious traditions;

Secondly, a future meeting which the students had requested would be held.

The meeting with University officials was held Wednesday, March 24. The meeting lasted for two hours.

Among the things the students asked for was sensitivity training for every facet of the campus; the inclusion of sexual orientation as part of the anti-harassment policy in the student handbook and wherever else it appears; that there be a form created for harassment cases, no matter what the cause. No such form now exists.

Wilger said that he was "cautiously optimistic."

"I think," Wilger said, "that there was finally some realization that there are problems on campus. I think that was one of the most positive things to come out." However, there was nothing concrete decided, Wilger said.

One of the students' requests was that there would be another meeting within three weeks. The officials agreed to that, but no time has been set.

'Women En Large' Slide Show Madison April 13

[Madison]- Women En Large, a forthcoming book of photographs of fat nudes, is both a work of liberation and of fine art. The creators of Women En Large — photographer Laurie Edison and writer Debbie Notkin — believe deeply that their book will help get out a message that fat women are beautiful, healthy, active, and lead lives as rich and varied and full as any other group of women.

Now that the book is almost completed, Notkin and Edison are taking their slide show on the road and Edison will be appearing at the Wil-Mar Neighborhood Center, 953 Jenifer Street, Madison, on Tuesday, April 13, at 8:00 p.m. Sliding admission: \$4 to \$8.

This is more than a slide show of fine photography. Edison will discuss slides of the photographs, and engage the audience in a passionate discussion of size issues. The first performance of Women En Large, at Mama Bear's in Berkeley, California, was sold-out, with dozens of people turned away at the door. Participants on April 13 will include Madison's Fat Chance Theatre.

Bicycling Club Forming In Madison April 13

[Madison]- Different Spokes of Madison is a newly formed bicycling club for Gays, Lesbians, Bisexuals and friends.

Different Spokes invites interested bicyclists to its upcoming information and planning meeting. The meeting will provide an opportunity for like-minded bicyclists to learn about and comment on planned early season rides and help to plan additional rides.

The meeting will be held April 13, 1993, at 7:00 p.m. at The United, 14 W. Mifflin Street in Madison.

For more information, call Dean Hutchens or Dave Parsons at (608) 241-8184.

HOUSE Continued from Page 1

surprised as saddened by the incidents. "Somehow you like to think you're making progress on these things," he said. In an interview with the Capital Times, Wagner predicted that the fear and the harassment would continue.

But he expressed no doubts about the fact that the Scheel House would be built. "The project will move ahead," he told the Light.

An informational meeting is scheduled in the neighborhood on April 13th. The building's conditional use permit is tentatively scheduled to be considered by the city's Plan Commission on April 19th.

CLASSIFIEDS

Accommodations

BE-YOURSELF INN

Time to get-away to Minneapolis/St. Paul? Relax in our executive setting B&B. Close to Mall of America, Gay nitelife, large deck for natural sunning. Call Jon/Phillip: (612) 698-3571.

Buy/Sell

FURNITURE

Love seat early American high back & wide arms wood trim lie new beige \$250. Rug 8x11 Oriental Wood, Shades of Dusty Rose, Brown & Beige, \$450. (414) 372-5130. g

FREEDOM RINGS!!

Pendants, Keychains, Earrings, Ring Sets. VIKTOR-VICTORIA 3470 N. Oakland Ave. or 19035 W. Bluemound Road (414) 964-1945. h

CLASSIFIEDS

CLASSIFIED ORDERS: Completely fill out this form and mail to WISCONSIN LIGHT, 1843 N. Palmer, Milwaukee, WI 53212.

RATES ARE \$2 for each line. Each line can contain up to 42 characters, (including spaces). Indicate if you would like a BOLD HEADLINE of up to three words above your ad for an additional \$2.50. Also indicate classification under which your ad is to be run.

DEADLINE for placing a classified ad in WISCONSIN LIGHT is noon Wednesday prior to publication. If you mail your ad we must receive it on or before Wednesday. NO CREDIT or BILLING SERVICES are offered, and we DO NOT accept any classifieds on the phone for placements or renewals.

NAME	ADDRESS	PHONE
CITY	STATE	ZIP CODE

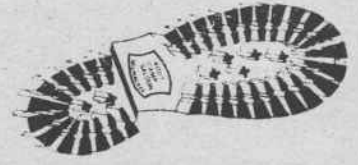
PLEASE CHECK THE ISSUE(S) IN WHICH YOU WOULD LIKE YOUR AD TO APPEAR.

April 15; April 29; May 13; May 29

Subscribe to Wisconsin Light

1 Year (25 issues)
First Class \$24.95
Third Class \$11.95

1843 N. Palmer St.
Milwaukee, WI 53212



BOOT CAMP SALOON
MILWAUKEE'S
LEATHER / LEVI BAR

209 E. National
Milwaukee, WI
414-643-6900



SUNDAY, APRIL 4 — 9 PM
Brittney Morgan
Presents a fundraiser for
Milwaukee AIDS Project

"Easter Basket"
\$3 Cover

Country Dancing
Mon.-Tues.-Fri.-Sat.

672-5580

1753 S. Kinnickinnic Milwaukee, WI 53207

Housing/Rent

Milw/Walker's Pt., 517 W. Bruce, Smaller, Bdrm, stove, refrig., \$245, (414) 224-8220.

Milwaukee's Riverwest: N. Pierce St. cozy 2 brm lower in owner occupied duplex. Newly decorated, appliances, yard deck, security system, garage space and laundry avail. \$430 + sec/utl. May 1 (414) 372-3934. m

Historic District: Mediterranean-style Revival building of early 1920s in Beaux-arts tradition. Complete historic renovation. Two-bedroom Apartment. Very bright, open, expansive. Brand new interiors. Includes heat. Ideal for 2+ Roommates. \$411+. Call for Appointment: 781-2009.

COOP HOUSING

In Madison. We are a diverse group of individuals who are non-heterosexual, non-sexist, non-racist, non-anti-semitic. Cost \$198 — \$270 + \$64/mo. food. Call 256-3131 or stop by for dinner, Sun.-Thu. 6 p.m. 636 Langdon St. k

General Services

Penis Enlargement— Vacuum pumps & prof. instruction. Dr. Joel Kaplan (415) 739-5847. l

Organizations

Volunteers & Ideas Needed Hurricane Productions Womyn's Music & Culture, P.O. Box 71268, Milwaukee, WI 53211.

National Gay Pilot's Assoc. 703-660-3852.

GALANO CLUB. A social club serving the recovering Gay and Lesbian community. Regularly scheduled AA, NA, Al-Anon, ACOA and other 12-step meetings. Open nightly. 2408 N. Farwell Avenue, (414) 276-6936. x

Real Estate

I understand your special needs. Please see my display ad in the "Directory of Professionals" in this issue. David Chester, Federated Realty (414) 964-3900. z

Crucial Choices Must Be Made On April 6 Election Day

Commentary By John Quinlan

The April 6th elections represent important choices for Lesbians and Gay men throughout Wisconsin, community leaders say.

Statewide, the State Superintendent of Schools race represents a clear choice between Linda Cross, a fundamentalist candidate of the Far Right with dubious credentials and John Benson, a well-qualified moderate. (See accompanying articles.)

In Wisconsin's First Congressional District, which stretches along the southern border from Janesville/Beloit to Racine/Kenosha, we have a choice between two candidates in the Democratic primary who are actively seeking Lesbian and Gay support: Peter Barca and Jeffrey Neubauer.

A potential Republican takeover in the State Senate — with the result of a leadership that is completely hostile to Gay and Lesbian rights — is at stake in three special elections. Milwaukee's David Cullen, greater Madison's Joe Wineke and Chippewa Falls's Jerome Dachel all face opponents with markedly more conservative records.

In Madison, progressives are very nervous because a gun referendum is likely to bring out a disproportionate number of conservative voters. At stake, is the progressive majority on the City Council at a time when major strides are about to be made for alternative family rights.

The Madison school board race represents choices that could also have a major effect on our lives. The race pits Carol Carstensen and Peter Williams — candidates who have been extremely responsive to the concerns of Gay and Lesbian parents, youth and educators — against two extremely conservative opponents. One is the cofounder of the CARE Committee, a group whose leadership has been openly homophobic

'Art of Healing' Shows the Beauty and Power of the Human Spirit

By John Quinlan

The Art of Healing, an exhibition of the works of over 60 Wisconsin artists who use their art in healing from childhood abuse, will open in Madison on Friday, April 16th. Over 160 works will be displayed in the Commonwealth Gallery of the Madison Enterprise Center, 100 S. Baldwin St.

The exhibit opens with a reception beginning at 4:30 pm, followed by a reception featuring a speech by University of Wisconsin Dean of Students Mary Rouse. Rouse, who has been a special friend of the Lesbian and Gay community, has also earned the admiration of many who know her for her willingness to speak out about her own very difficult childhood.

As a close friend of one of the organizers of the show, I've had the chance to view these powerful works and see this project take shape over the last year. For my friends who are survivors of childhood sexual abuse, the very process of creating the art and bringing this show into reality is a powerful statement of the triumph of their spirits in the face of horrendous circumstances.

Some of the art is disturbing: violent and ugly thrusting imagery that evokes the horror of the abuse. But much of the art in this exhibit shines forth in strength and beauty....

While the art evokes deep emotions, one isn't likely to walk away with a feeling of devastation. For this exhibit of work by "survivors" represents so much more than just "surviving." In viewing these pieces, you get an overwhelming sense of our ability as human beings to persevere, to draw strength and hope from the darkness.

The exhibit, which runs from April 16 through May 13, will be open on Wednesdays, Thursdays, and Fridays from 3 to 8 pm and on Saturdays and Sundays from noon to 2 pm. At least one in seven men, and one in four women are survivors of childhood sexual abuse. For more information on the show and resources available for survivors, contact the Wisconsin Committee For the Prevention & Treatment of Child Abuse & Neglect at (608) 256-3374.

in the past. The other, who has virtually no record of community service, is Gov. Tommy Thompson's Operations Manager.

For Lesbians and Gay men who ask "why are these school races important to me?" there are several important answers. As a recent letter circulated by Rep. Tammy Baldwin (D-Madison) states: "We must think about the impact that school policy has on both children from Gay and Lesbian families and on children who are beginning to come out themselves. If we have reactionary policies in our schools, we are really doing great injury to our youth."

"What happens in our schools helps set the climate that we all live in... If we are to diminish the violence caused by homophobia in our society in the long run, we need to make sure we're electing school board members and school superintendents who will demand that tolerance and respect for Gays and Lesbians be part of the school curriculum."

The Spring elections are traditionally low turn-out times. The forces of the Religious Right have shown themselves to be extremely effective in mobilizing political power that is out of proportion to their numbers. That's why we as a community must be equally organized and come out in massive numbers on April 6.

Get-out-the-vote efforts on election day could be crucial. For more information on the special Senate races, call (608) 266-3520 in Madison or (414) 442-1212 in Milwaukee. For information on how to help with the Madison school board races, call Carol Carstensen at (608) 255-5931 or Peter Williams at (608) 256-9092.

New York's Mayor Supports Mayor Norquist in Colorado Boycott

[Milwaukee]- In late February, Milwaukee Mayor John Norquist sent a letter to Mayor David Dinkins of New York City regarding the Gay/Lesbian boycott of Colorado in the wake of the passage of Amendment 2. On March 12, 1993, Dinkins replied. The following is the text of Dinkins' letter.

Thank you for your letter of support regarding the travel boycott of the State of Colorado.

While the boycott by itself will not solve the problems caused by the enemies of justice and fairness, we must always take a strong stand against actions which discriminate against members of our society.

I am grateful for your support and I am pleased that my colleagues at the United States Conference of Mayors (USCM) followed the lead of other national organizations to move our annual meeting to another state, one which is more supportive of social justice and equal protection under the law for our Gay brothers and Lesbian sisters.

Given New York City's commitment to Gay and Lesbian rights as well as its obvious amenities, I offered the City of New York as an appropriate alternative site to Colorado. I am delighted that on January 19th, the USCM voted to hold the convention here in New York City.

Mayor Wellington Webb of Denver made the point — and I very much agree — that any and all actions that we take in retaliation to this odious amendment should not be seen as a repudiation of the hundreds of thousands of Colorado voters who opposed this amendment. Indeed,

the citizens of Denver, Boulder and Aspen voted overwhelmingly against the proposition.

I thank you for your firm stand against Amendment 2. I look forward to working with you and our colleagues at USCM in solidarity in order to advance the issues on our nation's urban agenda.

The letter is signed by Mayor Dinkins.

IT'S TIME FOR A SPRING BREAK!

2 people, 3 nights: \$90 plus tax; 2 people 5 nights: \$140 plus tax. Sun-Thurs. excluding holidays at your bed-&-breakfast second home in the great north woods. (Ask about Northstar House for group outings!)

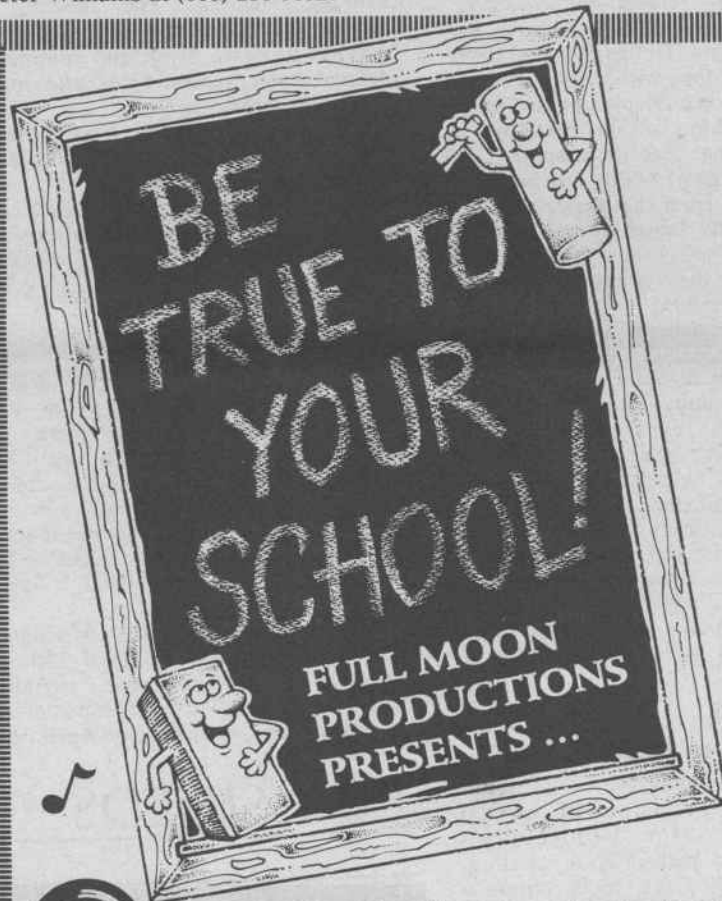
NORTHLAND HOUSE
609 Hwy. 77, Pence, WI 54550
(715) 561-3120



CK'S OUTBACK
"A WOMYN'S PLACE TO EXPERIENCE"

Camp in the beautiful woods of South Central Wisconsin. Enjoy the outdoors and relax in a safe space for womyn.

Reserve your site today!
(608) 847-5247



THE SECOND ANNUAL WOMYN'S

OLDIES DANCE

SATURDAY, APRIL 10
LAKE PARK PAVILLION

8:00 P.M.
till midnight

\$6 at the door

(Located at Lake Dr.
& Newberry Blvd.
Milwaukee)



REMEMBER THE '50s & '60s?

DA's and Bobby Sox, Poodle Skirts and Leather Jackets, Gladys Knight, The Supremes, & Little Eva. And real school spirit!

Here's your chance to wear all those great old clothes, fix your 'do and share a whole lotta shakin' with your friends! Dress up or come as you are.

Music by Professional DJ, spinning your fave platters. Cash bar with non-alcoholic drinks available.

