

Give the People Light and they will find their own way.

Wisconsin Light

In This Issue...

Packers Apologize
for Reggie
Page 2

Wisconsin's Favorite
DJs Tell All
SPOTLIGHT SECTION
Page 16



"NEW"
Tidbits From
Tittletown
Page 5

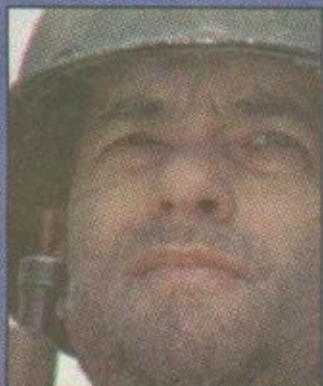
Madison Pride
Weekend Recap
Page 13



Color Photos
Pages 14-15

Election Coverage
Page 8

"Unforgettable"
Private Ryan
Page 19



MILWAUKEE
LGBT CENTER
SELECTS SITE
PAGE 3



PFLAG
Parents, Families and Friends
of Lesbians and Gays
920-735-1025

**Homosexuality Is
Not A Family Value.**

It Is A Sin.

Appleton

Madison

Milwaukee

**Someone you know
and love
is gay.**



For more information, call: (414) 299-9198

An Exclusive Wisconsin Light Report

BATTLE OF THE BILLBOARDS

by Bill Meunier

Wisconsin Light has learned that PFLAG chapters in Milwaukee and the Fox Valley will be erecting 10 Gay positive billboards within the next month. Coming on the heels of the anti-Gay billboard controversy in the Madison area, the PFLAG signs seem almost certain to escalate the public debate over homosexuality.

PFLAG-Milwaukee's signs will go up in five locations on or about August 3. "We wanted to put them up for PrideFest," said

Elna Hickson, of PFLAG Milwaukee. Hickson said that PrideFest is a critical time for families with Gay and Lesbian children, because a number of them choose that time to tell their parents of their sexual orientation.

The Milwaukee billboards will convey a simple message, "Someone you know and love is Gay" plus the PFLAG-Milwaukee hotline number. The signs are intended to make those who have Gay or Lesbian family members aware of the group and its services.

Hickson credits Brigitte Vojcsik with

doing all the work for the signs. Vojcsik, whose 25-year-old son, Marc, is Gay, told Wisconsin Light that she wanted to make other parents of Gay and Lesbian children become aware of PFLAG.

Vojcsik says, "It's high time for the City of Milwaukee to get a little wake up call." She says that she wants people, who are wrestling with issues surrounding a Gay or Lesbian family member, to realize that help is available. "When you reach out to people, usually doors open up and about 25 people are

Please see Billboards, Page 12