

2011 OFFICIAL  
PRIDE FEST

**QUEST**

SPECIAL  
EDITION

VOL. 18 ISSUE 8

MILWAUKEE

# PRIDE GUIDE

FRIDAY  
JUNE 10  
**MO'NIQUE**

SATURDAY  
JUNE 11  
**SALT-N-PEPA**

SUNDAY  
JUNE 12  
**LEANN RIMES**  
W/SPECIAL GUEST  
CHELY WRIGHT

## YOUR COMPLETE GUIDE TO PRIDEFEST WEEKEND!!!

WHERE MIDWEST PRIDE MEETS  
ON MILWAUKEE'S  
LAKEFRONT

- OVER 200 FOOD  
& MARKETPLACE  
VENDORS
- OVER 150 ACTS
- ON 8 STAGES



# Love, hope, success, family, security.

## Some things we all have in common.

There's nobody like State Farm® to protect the things we all value.

**Like a good neighbor, State Farm is there.®**

CALL AN AGENT OR VISIT US ONLINE TODAY.



# State Farm™

statefarm.com®



# WELCOME to the 24th Annual PrideFest Milwaukee!

## HOURS:

Friday, June 10th, 3PM - Midnight  
Saturday, June 11th, 12PM - Midnight  
Sunday, June 12th, 12PM - 10PM (grounds), and  
12Midnight (PUMP! Dance Pavilion)

## Purchasing Tickets

PrideFest patrons have the opportunity to experience a number of benefits: International entertainment, education and advocacy, music and dancing, fun family and youth activities, shopping and dining, performances, and more! Attendees can gain even more benefits by taking advantage of some of PrideFest's special promotions:

## Pre-Festival Discount Tickets

(Available at [www.pridefest.com](http://www.pridefest.com) until June 10th at 1PM)

**Single-Day Admission - \$16**

(save \$2 from gate price)

**Three-Day Weekend Pass - \$40**

(save \$14 from gate price)

**Block of 25 tickets -**

contact the PrideFest Ticket Hotline: 414-241-4088

Reserved seating tickets for Headliner shows available online until Friday, June 10, 1PM. Afterwards, reserved seating tickets may be purchased at the main gate (based on availability).

Reserved seating begins approximately 45 minutes prior to the start of the headline show each night.

## PrideFest Weekend - Ticket Prices at the Gate:

One-Day General Admission - \$18

One-Day VIP - \$100

One-Day Reserved Seating -

\$75 - Mo'Nique, June 10

\$49 - Salt-N-Pepa, June 11

\$75 - LeAnn Rimes w/special guest

Chely Wright June 12

**12 years and under - Free**

## PrideFest is produced by PrideFest, Inc.

The PrideFest Office is located in the Milwaukee LGBT Community Center Suite 204M, 252 E. Highland Ave Milwaukee, WI 53202 414.272.3378  
[www.pridefest.com](http://www.pridefest.com) 414.272.3378

## Mailing address:

PrideFest, Inc.  
P.O. Box 511763 Milwaukee, WI 53203

*Publication of the name, photograph or other likeness of any person or organization in the Official 2011 Pride Guide is not to be construed as any indication of the sexual, religious or political orientation, practice or beliefs of such persons or members of such organizations. PrideFest assumes no responsibility for advertisers' claims. PrideFest is a registered trademark. Entire contents ©2011 by PrideFest, Inc. except where specifically noted otherwise. All rights reserved. Reproduction, either in whole or in part, is prohibited. Please continue to check [www.pridefest.com](http://www.pridefest.com) for updates and new information.*

## PrideFest's Mission

The mission of PrideFest is to celebrate the diversity of Lesbian, Gay, Bisexual and Transgender (LGBT) culture and community.

## Get the VIP experience at PrideFest!

From - day to 3-day Ultimate VIP,  
PrideFest has a special experience for you:

**1-Day VIP - \$100**

**3-Day VIP - \$225**

**VIP Ultimate w/ Meet & Greet \$350-\$500**

depending on artist.

(1-Day VIP also available at gate during weekend)

These VIP tickets help support the festival's mission and operations while letting you experience PrideFest in style! 1-Day VIP includes admission for the day, and 3-Day gives you admission for the entire weekend. The Meet & Greet package is also a 3-Day admission pass, and includes a special backstage meeting with your favorite artist. By purchasing a VIP ticket, you will gain access to the Miller Lite VIP Oasis, an exclusive lounge area with great views of the Miller Lite Main Stage, enhanced sound for headline entertainment shows, and these amenities:

Complimentary Miller Brewing Products, soda & water

Complimentary hors d'oeuvres

Private bathrooms

Relaxed table seating

Elevator

Dedicated bar service



## Special Deals

Did you buy your ticket at our main gates? Hold on to it and take advantage of the generous offer from Potawatomi Bingo Casino printed on the back of the ticket. You can redeem your ticket at any Firekeepers Club Booth (FKC) at Potawatomi Bingo Casino for \$10 in FKC Reward Play (After 10 slot points earned in your same day visit) It's valid June 10-September 30. To be eligible, you must be at least 21 years old, and be a member of the FKC. Membership is free! Valid only at Potawatomi Bingo Casino, 1721 W. Canal Street, Milwaukee Wisconsin. View full details on the ticket stub. Good luck!



[www.paysbig.com](http://www.paysbig.com)

**Free Entrance with Donation of Four Non-Perishable Food Items to benefit the AIDS Resource Center of Wisconsin's Food Pantry**



How would you like to obtain free admission into PrideFest AND help a great cause? Just bring four non-perishable food items to the AIDS Resource Center of Wisconsin (ARCW) Food Pantry for free admission. Available 12 p.m. - 2 p.m. on Saturday, June 11th and Sunday, June 12th at the Main Gate.

Additional promotions, including VIP Reserved Seating, are available at [www.pridefest.com](http://www.pridefest.com). Continue to check PrideFest's web site for updates.

## Paper or Plastic? PrideFest accepts both.

All food, beverage and PrideFest merchandise can be purchased directly with cash or by credit card.



**June 10th, 11th and 12th, 2011**

**Midwest Pride Meets On Milwaukee's Lakefront**  
**Henry W. Maier Festival Park**  
**(Summerfest Grounds)**

# QUEST

**2011 Official PrideFest Pride Guide**

**Published by Quest Magazine**

P.O. Box 1961 Green Bay, WI 54305

800-578-3785

Mark Mariucci, Production and Design  
Kate Sherry, Editor



### **PrideFest Task Force and Production Team**

PrideFest is produced through the dedicated efforts of a volunteer team. The Board of Directors oversees the festival year-round and the Production Team develops and carries out the day-to-day planning of the festival.

### **2011 PrideFest Board of Directors**

Scott Gunkel - President  
Gary Petersen - Secretary  
Francisco Araiza  
Tim Kitzman - Treasurer  
Paul Masterson  
Peter Minns  
Kate Sherry  
Gregg Hutterer

### **2011 PrideFest Production Team**

Festival Producer  
Arts Building Director  
Children & Family Activities Director  
Assistant Children & Family Activities  
Communications Director  
Media Grounds Concierge  
Entertainment Director  
Assistant Entertainment Director  
Entertainment Assistant  
Entertainment Assistant  
Dance Pavilion Stage Manager  
Dance Pavilion Assistant Stage Manager  
PUMP! Manager  
PUMP! Manager  
Entertainment Hospitality Manager  
Entertainment Merchandise Manager  
Entertainment Security Manager  
Entertainment Security Manager  
Entertainment Security Manager  
Entertainment Photographer  
Entertainment Photographer  
Entertainment Videographer  
Food and Beverage Director  
Assistant Food and Beverage Director  
Community Services Director  
Hospitality Coordinator

Peter Minns  
Paul Masterson  
Brendan Barrett  
Eva Williams  
Kate Sherry  
Roehelle Herrmann  
David Charpentier  
Jason Dombrowski  
Julie Thorsen  
Drew Magathan  
Tony Bilot  
Jason Whitley  
Gregg Hutterer  
John Murges  
Annette Holvey  
Chris Segedy  
Maribel Santiago  
Alan Grabowski  
Sue Jarvela  
Daniel Bissing  
Sarah Paske  
Abeni Garrett  
Tim Talsky  
Eloisa Balderas  
Ritchie Martin  
Marie Schneider

Marketplace Director  
Assistant Marketplace Director  
Milwaukee Gay Art Center Stage Director  
Miller Lite Main Stage Manager  
Operations Director  
Assistant Operations Director  
Proud Crowd/VIP Director  
Assistant Proud Crowd/VIP Director  
Rainbow Stage Manager  
Religious Activities  
Religious Activities Assistant  
Security Director  
Security Assistant  
Social Media Director  
Sponsorship Director  
Stonewall Director  
Stonewall Assistant Director  
Volunteer Director  
Assistant Volunteer Director  
Assistant Volunteer Director  
Volunteer Captain  
Volunteer Captain  
Volunteer Captain  
Youth Activities Director  
Assistant Youth Activities Directors

Derrick Soto  
Sylvester Brown  
Alan Piotrowicz  
Dave Glenn  
George Schneider  
Chaz Erdall  
Mike Bellagio  
Martino Angeles  
Colin Gawronski  
Jeffrey Montoya  
Samuel Christensen  
Terrance Raffee  
Glen Failenbeck  
Michail Takach  
Scott Gunkel  
Jacquie Lindo  
Dawn Schmidt  
Sean Duerr  
Greg Bach  
JR. Witt  
Courtney Kopacz  
Bob Geist  
Minh Nguyen  
Miranda Larocque  
Jay Botsford

### **Organizational Volunteers**

Several organizations provide volunteer support for the beer pods, front gates and ticket booths. Be sure to tip them well, because these groups will keep their tips to support their programming. Organizations providing volunteer support this year include:

Milwaukee LGBT Community Center  
Castaways MC  
Washington Heights Rainbow Association  
16th Street Community Health Clinic  
Milwaukee Gay Arts Center  
Galano Club  
Lesbian Alliance  
WISCRAD - Wisconsin Rainbow Alliance for the Deaf  
Women's Voices Milwaukee



**"Flowers are like men, they can never be too fresh or too big."**

- Annuals, Perennials, Hanging Baskets
- Cacti & Succulents • Florida Tropicals
- Unique Pottery Selection

**TIGERLILY**

**Tiger Lily Garden Market 414-254-5925**  
1645 N. Water Street (Corner of Water and Pleasant)



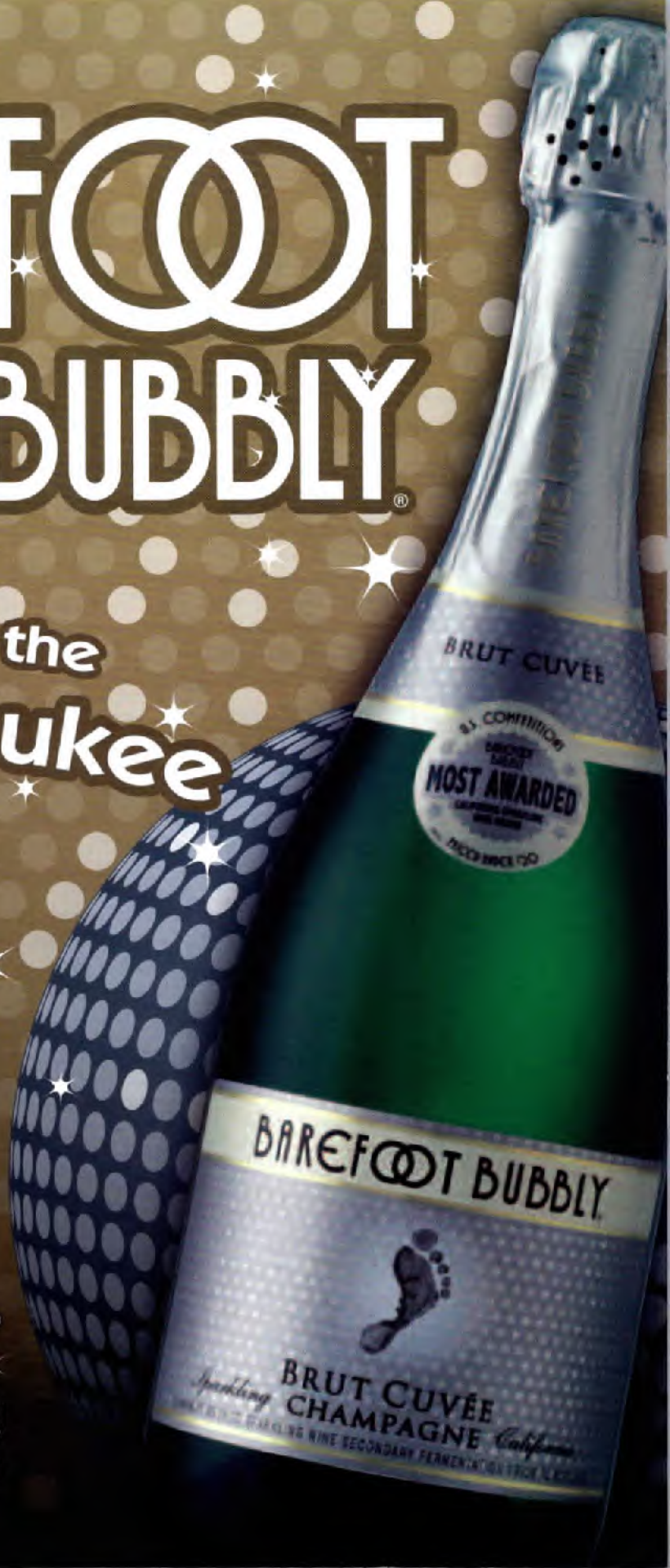
# BAREFOOT WINE & BUBBLY

Proud to Support the  
**2011 Milwaukee  
Pride Fest!**

Supporting the  
LGBTQ Community  
for more than  
20 Years!

**GET BAREFOOT  
AND HAVE A GREAT TIME!**

800.750.8828 • [gay.barefootwine.com](http://gay.barefootwine.com)





### Volunteer Corps

The Volunteer Corps is made up of hundreds of individuals who volunteer during festival weekend to help ensure that everyone has a good time. Thank you to every member of the Volunteer Corps for their assistance!



### OVER 21 - ID Bracelet: Get carded & stay carded

PrideFest takes a proactive approach to preventing under-age drinking at the festival by using ID bracelets to allow patrons of legal drinking age to purchase alcoholic beverages throughout the festival grounds without being carded every time. All patrons who wish to drink alcohol must show an ID as proof that they are of legal drinking age. Each beer pod and cocktail bar will be checking ID's and distributing ID bracelets. These bracelets must be worn at all times by everyone who will be purchasing or drinking alcoholic beverages. Those who are not wearing a bracelet while drinking alcohol will be escorted to an ID station and asked to provide proof of age.

### Fireworks

One of the many things that put Milwaukee's Pride festival on the map, is the fact that it was the first Pride event in the nation to produce a fireworks show! 9:30 p.m. during the Saturday headline show, the rockets will be launched from Lakeshore State Park located east of the festival grounds.



### Milwaukee Pride Parade



The Milwaukee Pride Parade Committee organizes the parade, which steps off this year at 2 p.m., Sunday, June 12th on South Second Street between Lapham and Greenfield. It travels north on 2nd street past gay & lesbian businesses. For more information about the parade, visit [www.prideparademke.org](http://www.prideparademke.org).

### ACCESSIBILITY

PrideFest is dedicated to supporting and assisting our patrons who have disabilities. In compliance with the 1990 Americans with Disabilities Act, PrideFest is proud to state that we are continuously striving to make our festival accessible to everyone. We welcome your comments! You can reach us by calling (414) 272-3378 (voice) or e-mailing [accessibility@pridefest.com](mailto:accessibility@pridefest.com).

#### Stage Area Seating

During PrideFest, the major stage area, the Miller Lite Main Stage, will offer raised platforms and accessible picnic tables (where marked) for patrons who use wheelchairs. Accessible seating at picnic tables is located throughout the grounds.

#### Braille Schedules

Braille entertainment schedules will be available at all information centers on the grounds.

#### Sign Language Interpreters for Performances

Sign language interpreters will be provided for our national acts at the Miller Lite Main Stage in the evening. However, an interpreter can be provided for specific performances upon request by contacting the PrideFest at [info@pridefest.com](mailto:info@pridefest.com). A minimum of two weeks prior notice is required so an interpreter can be secured and materials/lyrics can be obtained from the artist/speaker.



#### Drinking Fountains

Drinking fountains are located outside each restroom area and are accessible to all patrons. Drinking fountains can also be found near the Children's Area.

### TRAVELING TO PRIDEFEST/WHERE TO STAY

#### DOUBLETREE HOTEL MILWAUKEE CITY CENTRE

611 W. Wisconsin Avenue  
Milwaukee, WI 53203  
Phone: 414-273-2950  
Fax: 414-273-7662



We are pleased to say the DoubleTree Hotel Milwaukee City Centre will once again be PrideFest's host hotel. Specially negotiated PrideFest rates will be available at this contemporary downtown hotel that provides close proximity to downtown amenities and features warmly furnished upscale guest rooms. At the DoubleTree Hotel in the center of vibrant downtown Milwaukee, you will experience warm Wisconsin hospitality in the perfect location.

**To Make a reservation**, visit the personalized PrideFest reservations site at DoubleTree or find it on [www.pridefest.com](http://www.pridefest.com). If you prefer to make your reservations by phone, call the hotel at 414-273-2950 OR 1-800-222-TREE. Be sure to mention that you would like the PrideFest group rate.

#### General Mitchell International Airport (MKE)

This busy airport is a quick 10-minute drive from the festival grounds. Reserved valet parking is available. Also check out VISIT Milwaukee at [www.visitmilwaukee.org](http://www.visitmilwaukee.org).

### Food and Bar Assistance

If you need any assistance carrying food and beverages on the festival grounds, please ask the food vendors' employees and they will be happy to assist you. Or, please contact a PrideFest "Courtesy Staff" member for assistance.

### Telephones & TTY

Accessible public telephones are located outside of each restroom area. Many of our phones have volume-controlled handsets. A text telephone (TTY) is available behind the Harley-Davidson Roadhouse southwest of the Marketplace.

### Wheelchair/Stroller Rental

A limited number of wheelchairs and strollers can be rented during PrideFest. Wheelchair/stroller rental stations are located just inside of the Main Gate. Scooters are also offered by our third-party vendor, APSCO - On the Go, and are available at the Main Gate. Rentals are on a first-come, first-serve basis, meaning no reservations will be taken, and all rentals require a minimal deposit.

#### Please Note:

Service animals are allowed on the grounds provided the animal does not pose a danger or threat to other service animals or patrons. Owners of service animals are responsible for the animal's personal care. A relief area for service animals is located near the Respite Pavilion.

For accommodations for people who are deaf, hard of hearing, blind or have low vision and other services not mentioned, please contact the PrideFest Accessibility Director at [accessibility@pridefest.com](mailto:accessibility@pridefest.com).

### Greater Milwaukee Convention & Visitors Bureau

You can find more information about travel to Milwaukee and its surrounding areas at the Greater Milwaukee Convention & Visitors Bureau by calling (800) 554-1448 or visiting [www.officialmilwaukee.com](http://www.officialmilwaukee.com).

### HOW TO GET TO PRIDEFEST

For updated information on roadwork, call the Department of Transportation hotline at (800) ROADWIS or visit the D.O.T web site at [www.dot.state.wi.us](http://www.dot.state.wi.us).

### PARKING AT THE FESTIVAL

Ample parking is available both in privately operated lots and along city streets. Fees vary. Vendors with booth spaces will receive directions to special unloading areas at the gates.

### LOCAL BUS TRANSPORTATION

We are pleased to announce that PrideFest receives Festival Shuttle bus service from the Milwaukee County Transportation System. Shuttle service to PrideFest begins approximately one half-hour prior to the start of the festival and ends a half-hour after the event. Shuttles run approximately every 15 minutes along Wisconsin Avenue.





# DOUBLETREE<sup>®</sup> HOTEL

MILWAUKEE CITY CENTER

The  **Hilton** Family

Wisconsin's newest DoubleTree Hotel in downtown Milwaukee has already been rated as a Top 10 DoubleTree nationwide by smart travelers just like you. The great location, generous amenities and recent renovation will win you over, too!

- Across from the Midwest Airlines Convention Center
- Walking distance to the Bradley Center, Marquette campus and Grand Avenue Mall
- 24-hour covered valet parking
- Business center and fitness center
- On-site Avenue Bar & Grill
- Complimentary high-speed wireless Internet



611 W. Wisconsin Avenue • (414) 273-2950  
[www.DoubleTreeMilwaukee.com](http://www.DoubleTreeMilwaukee.com)

# Upgrade. Downtown.



## Opening Ceremonies



### 8:00 PM Friday, Miller Lite Main Stage

The Opening Ceremony officially opens the PrideFest weekend. Since 1987 the city's Lesbian, Gay, Bisexual, and Transgender (LGBT) community has assembled to celebrate its diversity and unity in the great Milwaukee tradition of a "fest." Now in our 24<sup>th</sup> year, we are proud to see tens of thousands of LGBT people, their friends, families and allies attending the internationally recognized PrideFest.

## PrideFest Awards



Awards have been part of PrideFest for most of its 24-year history. They recognize community leaders, organizations and volunteers for their tireless dedication to the cause of LGBT equality. All contribute to the betterment of our LGBT life and to our mutual goal of creating positive change in our community. Please see this year's schedule for a brief description of this year's recipients, Maria Cadenas, and Diverse & Resilient. Following the award presentations, PrideFest President Scott Gunkel will officially declare the opening of PrideFest 2011.

## Take a Part of PrideFest Home With You

Show off the fact that you were here! The Official PrideFest Merchandise Booth offers a variety of festival products to remember the good times at PrideFest. T-shirts, caps, sweatshirts and more! Stop by and pick up a souvenir! The Merchandise Booth is just inside and to the south of the Main Gate.

## The PrideFest Marketplace

No visit to PrideFest is complete without a walk through the marketplace. With its diverse mix of supportive community businesses and community organizations, the Marketplace offers a unique mix of products and ideas. Marketplace vendors come from all over the country to be a part of PrideFest. *(following are the 2011 vendors as of publication.)*

### Acupuncture & Holistic Health Association

Annapurna Treasures

Asian Creations

Barefoot Wines

Bath Fitters

Bishop Farm

C3 Designs

Camel

Campit Outdoors Resort

Central Bark Doggy Day Care

Cereal City Advertising

Chiropractic Care Center-Franklin

Dazzle Body Art

Designs In Wire

Dykes on Bikes

Equality Wisconsin

Event Toyz

Everdry

Fair Wisconsin

Famous Cigars

Fusion Radio

Gina the Psychic Reader

Glass Rainbows

Grab Magazine

Heart of the Sky

Hollywood Threndz

Home Improvement Network

Home Pride Remodeling

Human Rights Campaign

Illumine I Titanium LLC

Jam's Jewels

Jiva Jewelry

Judy and Company

KB Designs

LGBT Center of Southeast Wisconsin

LGBT Film Festival

Liberty Gifts

Mamayek Heating & Cooling

Manhunt

Milwaukee LGBT Community Center

Milwaukee Police Department

MRM

Musekraft LLC (Martin Locke)

Our Lives

Out! Wear

Outwards Books

Pabst Theater

Planned Parenthood



Potawatomi Bingo

PrideFest Booth

Rachael Sage

Risque Business

Ryan Cassata Music

SEWUUC

Sonia & Disappear Fear

Star Ship Tattoo

State Farm Insurance

Suicide Prevention

The Law Center for Children & Family

Tool Shed

Tret Fure

USA Sunglasses

Waukesha County Technical College

Wisconsin Humane Society

## A Variety of Food Choices

With many food vendors serving a variety of delicious entrees, PrideFest has something for every taste. Beer, wine, water and soda will be available at several booths throughout the grounds. Current food vendor menus can be found online at [www.pridefest.com](http://www.pridefest.com). Enjoy!





**The first thing  
that should go on between  
two consenting adults.**



**HIV infection rates are increasing among  
young gay men. Protect yourself.  
Use a condom. Get tested for HIV.**

For free condoms or to schedule an HIV test visit  
the **ARCW booth** in the **Health and Wellness Area**  
at **PrideFest** or call **ARCW** at **414-225-1608**.

**ARCW**  
AIDS RESOURCE CENTER OF WISCONSIN  

---

*Excellence in HIV Health Care*



# Exercising Pride

## PrideFest Health & Wellness



- >> *The Exercising Pride: PrideFest's Health & Wellness Area* was created as a space to increase the visibility of LGBT non-profit organizations and programs and to showcase their robustness and viability.
- >> Each booth has fun and creative activities that engage participants and promote health and wellness of the LGBT communities and oftentimes *free gifts!*
- >> The first 500 people to visit booths in the Health & Wellness Area each day will receive special prizes and a *chance to win a Trek bike!*
- >> *Expanded HIV testing hours* at BESTD's Big Tent of Testing!  
 Friday, 3pm – 8pm  
 Saturday, Noon – 8pm  
 Sunday, Noon – 8pm



*PrideFest's Health and Wellness Area*  
*Hours: Open Sat & Sun, Noon to 6pm*

### SPONSORS:



Complimentary water provided by:  
**Premium Waters, Inc.**  
MAKING WATER BETTER



# *Thank you* to this year's agencies for participating in Pridefest's Health and Wellness Area!

## *Exercising* **Pride** PrideFest Health & Wellness

- ARCW
- BESTD Clinic
- Cream City Squares
- Diverse & Resilient
  - Connexus
  - African American Gay & Bisexual Men's Leaders Group
  - Lesbian & Bisexual Women's Leaders Group
  - SHEBA
  - Youth Advisory Board
- FORGE
- Galano Club
- HIV Prevention Health Promoters
- Lesbian Alliance
- Milwaukee GAMMA
- Milwaukee Gay Arts Center
- Milwaukee Gay Volleyball Association
- Milwaukee LGBT Community Center
  - Anti-Violence Program
  - Breast Health Program
  - rm2breathe
- Milwaukee Metropolitan Community Church

- Milwaukee Reiki Association
- PFLAG Milwaukee
- Q-BLOK/Pathfinders
- SAGE Milwaukee
- Shoreline Milwaukee
- Sixteenth Street Community Health Clinic
- The Queer Program
- UMOS
- The Universal Anglican Church
- Vets Do Ask, Do Tell
- Wisconsin Anti-Violence Effort
- Women's Voices Milwaukee



#### SPONSORS:





# PRIDEFEST 2011 FRIDAY STAGE LINEUP

3:00p.m. MILLER LITE MAINSTAGE

**The Duke of Uke and His Novelty Orchestra**  
Champaign, IL, Orchestra Pop



<http://www.facebook.com/dukeofukemusic>  
Energetic and unabashedly romantic, The Duke of Uke & His Novelty Orchestra enchants audiences with witty lyrics, complex vocal harmonies and funky rhythms.

3:00p.m. RAINBOW STAGE

**Süss**

Winnipeg, Canada,  
Queer Folk  
Cabaret

Süss's ingenious song construction and ironic lyrics sometimes play with time signatures leading into either queer or gory themes.

<http://www.sussmusic.com>



3:00p.m. PUMPI DANCE PAVILION

**Fred Astaire Dance Demonstrations & Teachings**  
Brookfield, WI

**Dance**

The moment you walk inside a Fred Astaire Franchised Dance Studio, you'll quickly realize why we're steps above the rest.

<http://www.fredastairebrookfield.com>



4:00p.m. RAINBOW STAGE

**London Bridgez**

Boston, MA,  
Spoken Word  
[www.londonbridgez.com](http://www.londonbridgez.com)

The writer and performer London Bridgez pushes the expectations of spoken word. "London" builds "Bridgez" between poetry and music.



4:30p.m. MILLER LITE MAINSTAGE

**Ronnie Nyles & Tallulah Who**  
Milwaukee, WI, Rock/Alternative/Pop

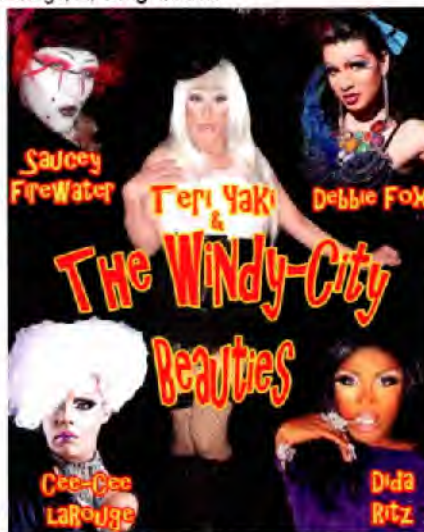
<http://www.ronnienylen.com>



Nominated by the Wisconsin Area Music Industry for 2011 "Rock Artist of the Year", Ronnie Nyles & Tallulah Who will rock and roll their way into your hearts.

4:30p.m. PUMPI Dance Pavilion

**Windy City Beauties**  
Chicago, IL, Drag Queens



These fierce gals are returning to our stages for year number 4 and are ready to shake it up Chicago style. Don't miss a great show and catch the girls throughout this year's events.

5:45p.m. RAINBOW STAGE

**Immigrant Punk**  
Denton, TX, World Music

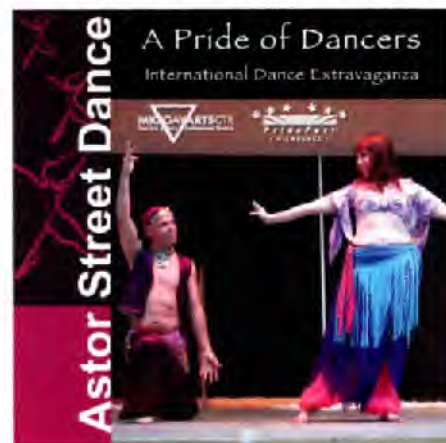
[www.immigrantpunk.com](http://www.immigrantpunk.com)

Mexican singer, songwriter, and poet Rocio "Roe" Aranda as Immigrant Punk broke into the rap/folk scene in 2010 with live album, en Vivo 2010. Soon after Aaron Gallegos and Jim Fellow joined her adding a



Spanish flamenco, jazzy spice fusion touch.

6:00p.m. Milwaukee Gay Arts Center (MGAC) Stage  
**A Pride of Dancers - International Dance Extravaganza**



[www.milwaukeebellydance.com](http://www.milwaukeebellydance.com)

Shaia Fahrid and the Astor Street Dance Studio dancers and friends in their fifth consecutive year of performing at PrideFest present "A Pride of Dancers". See Shaia and her troupes Extreme Taqsim and The Dreamy Genies, along with Ty King's African Dancers, Tamarind Tribal, and soloists Kish Kish, Jasmine, Layali, Shelby Daft and Jeannette Daft.

6:30p.m. STONEWALL STAGE

**PrideFest Interfaith Prayer Service**

Join local LGBT-friendly clergy to kick-off PrideFest with an interfaith prayer service, which will include beautiful music, an inspiring reflection and prayer. Join your sisters and brothers from diverse faiths as we embrace our spirituality in this beautiful outdoor venue.

**Participating congregations include:** Village Church, Universal Anglican Church, Milwaukee MCC, SS Cyril and Methodius United Independent Catholic Church, Divine Word Lutheran Church, Pentecost Evangelical Lutheran Church, Underwood Baptist Church, Unitarian Universalist Church West, Our Savior's Lutheran Church, Prince of Peace, Cross Lutheran Church, Lake Park Lutheran Church, Plymouth Church (UCC), Milwaukee Friends Meeting (Quakers) and more!

7:00p.m. RAINBOW STAGE

**Katie Quick**  
Nashville, TN  
Country

[www.katiequick.com](http://www.katiequick.com)

With her powerhouse vocals and captivating stage presence that has even the most prominent music industry execs turning their heads, Katie Quick is destined to become a household name.





## 2011 FOOD VENDORS

(Please visit vendor on grounds for full menu)

PIETRO PIZZA  
KOKOPELLI'S  
SAZ'S  
BELLA CAFFE' COFFEEHOUSE  
AUNTI ANN'S PRETZELS  
PACIFIC ORIENT  
JOEY'S SEAFOOD  
COUSINS SUBS  
RIVIERA MAYA  
ALADDIN  
OLDE COUNTRY STYLE ALMONDS  
COWBOY KETTLE KORN  
ANDERSON CORN ROAST  
3B CONCESSIONS  
NULINE HOMEMADE ICE CREAM  
TONER DES CONCESSIONS  
SIL'S DRIVE-THRU  
DAIRY TREAT SHOP  
WISCONSIN FRIED CHEESE CURDS  
SCARDINA BAKERY & DELI  
BUDDY'S DOG HOUSE  
PACIUGO GELATO  
KOEPEL'S FESTIVAL

## PrideFest Art and Culture Building

Presented by the Milwaukee Gay Arts Center



The PrideFest Art and Culture Building is located on the north side of the PrideFest grounds next to the dance pavilion. This year, the PrideFest Art and Culture Building presents an array of exhibitions including the History Project and the UWM Library LGBT Archive and the work of local artists.

### Milwaukee Gay Arts Center presents prints by Todd Rongstad

Todd Rongstad's poster-like prints present a look at LGBT consciousness and same-sex bonding of those early pre-Stonewall days. Rongstad has collected vintage images that contain more than a hint of LGBT relationships. In their innocence these old photographic documents belie an era in which overt expressions of LGBT behavior were rarely articulated. Rongstad enhances the original captured moment with texts to memorialize the individual images.

### The Milwaukee LGBT History Project

Since 2003, PrideFest has been honored to present the The History Exhibit, a collection of historical images, documents and time-line of our LGBT community. The Milwaukee LGBT History exhibit celebrates the rich history of Milwaukee's lesbian, gay, bisexual, and transgender community through displays and programs. The display is housed in the PrideFest Arts and Culture building, and is coordinated by the Milwaukee LGBT



# Hybrid

*"Where Milwaukee Meets!"*  
707 East Brady St.

Friday	Saturday	Sunday
4PM - 8PM <b>2-4-1</b> on all Beer & Rail and <b>2-4-1</b> from 12AM - 1AM	10AM - 4PM 4 Bloodys Mosas & Long Islands 4PM - 8PM <b>Beer Bust</b> \$8 domestic \$12 import & craft 12AM - 1AM <b>2-4-1</b>	\$4 Mosas Bloodys Long Islands Skyy Mixers <b>ALL DAY!</b>



## FREE PRIDEFEST SHUTTLE FRIDAY & SATURDAY!

FIND US ON FACEBOOK & HYBRIDLOUNGE.NET!

History Project, which works to uncover our city's LGBT history and make it more easily available to all. This year's display includes an interactive time-line of significant moments in our community's history - feel free to add your memories and stories! Also featured are selections from interviews with community members and historical items from the LGBT collection of the University of Wisconsin-Milwaukee Libraries.



The History Project is also pleased to screen an American Experience film, *Stonewall Uprising*, brought to you by local PBS affiliate, Milwaukee Public Television. This documentary tells the story of the Stonewall riots, a major turning point in the modern LGBT civil rights movement. The film is scheduled to screen continuously in the History Exhibit throughout PrideFest weekend in the PrideFest Arts and Culture Building.

## Children and Family Activities



All day activities (Saturday & Sunday 12:30-6:00pm) Sponsored and run by Wisconsin Rainbow Families, this area showcases a variety of activities and events for children of all ages on Saturday and Sunday. The 2011 Children's area continues its focus on providing a balance

of activities and entertainment for LGBT and alliance families! From magic to comedy to interactive family fun, there is something for everyone!

### Youth Stage

Various programming for children and teenagers is available throughout the weekend. Create, dance, play!



### PrideFest Volleyball Tournament



Located in the both the Health and Wellness area, and Urban Park Courts this year! Open volleyball play for PrideFest attendees will commence in the H&W area after tournament play both days and continue until dark. On Saturday from 12:4:30PM, at the Urban Park Courts, there will be "round robin" play to establish seeding. Sunday, from



12-4:30PM, will be the Tournament Competition also at Urban Park Courts. The action then moves back to the H&W area, where open play has been going on, and from 2:30-4:30 the remaining teams battle it out at the finals! Awards presentations to follow final games.

### SkyGlider

The SkyGlider will be open to give you a bird's-eye view of PrideFest. For a small fee, you can take a ride above the treetops and check out PrideFest the way the seagulls see it. The SkyGlider is located on the north end of the grounds near the Dance Pavilion.



### Group Celebration of Our Relationships

(formally the Mass Commitment Ceremony)

Recognizing your relationship at the festival's beautiful lakefront location can help make your experience even more memorable. Clergy will lead a beautiful service of celebration and blessing. All couples will receive a certificate, flowers and partake in a wonderful cake (compliments of Simma's Bakery). Individual commitment ceremonies may also be scheduled throughout the day on Saturday & Sunday. Register online [www.L-O-G.org](http://www.L-O-G.org) or at the Love of God Cathedral booth during the festival.

**HARBOR ROOM**

**A Man's Bar**  
~ Home of Milwaukee's Leather Community ~

established 2000

**SHIRTLESS MEN DRINK HALF PRICE**  
Anytime, All The Time!

**117 E. GREENFIELD AVE. • MILWAUKEE**  
E-mail: [greggfitzpatrick@att.net](mailto:greggfitzpatrick@att.net) <http://www.harbor-room.com>

**OPEN 8 AM 7 DAYS A WEEK**  
**HAPPY HOUR 3 TO 8 PM**  
**MONDAY THROUGH FRIDAY**

**414.672.7988**

## GETTING TO KNOW THE GROUNDS

### Miller Lite Main Stage



**Sponsored by Miller Lite**

Located in the heart of the PrideFest grounds, the Miller Lite Main Stage presents a non-stop lineup of national, regional and international acts.



### Dance Pavilion

Featuring the PUMP! DJ Showcase

**PUMP!**

**Sponsored by:**  
Barefoot Wines  
David Gruber Law  
IG DESIGNS



**GRUBER LAW OFFICES...**  
"fine call... that's all"  
414-276-6666

During the day, the Dance Pavilion provides a host of performances. At night, the space becomes the biggest outdoor dance party on Lake Michigan! Located north of the main gate entrance and fountain area.

### Rainbow Stage

The Rainbow Stage is host to many fabulous acts, and shows, so be sure to stop on by to check it all out – you may just find a favorite new artist to follow!

### Health & Wellness Area and Stage

Sponsored by ARCW, BestD Clinic, Diverse and Resilient, FORGE, Milwaukee LGBT Community Center, PrideFest, and Swiss Navy



Diverse & Resilient



Located directly inside the Main Gate with the Health & Wellness Stage at the Lake Michigan end of the area. The Exercising Pride: PrideFest's Health & Wellness

Area was created as a space to increase the visibility of LGBT non-profit organizations and programs and to showcase their robustness and viability. Each booth has fun and creative activities that engage participants and promote health and wellness of the LGBT communities...and oftentimes free gifts! The first 500 people to visit booths in the Health & Wellness Area each day will receive special prizes and a chance to win a Trek bike. Special thanks to Premium Waters, Inc. for providing complementary water.

**Premium Waters, Inc.**

### HIV testing hours at BESTD's Big Tent of Testing in the Health and Wellness Area

Friday 3pm-8pm  
Saturday Noon-8pm  
Sunday Noon-8pm

### PrideFest Arts and Culture Building

Sponsored by The Milwaukee Gay Arts Center

Located just north of the PUMP! Dance Pavilion.



### Milwaukee LGBT History Project

The 2011 LGBT History Project exhibit is inside the PrideFest Arts and Culture Building, and features an interactive time-line of significant moments in our community's history. Also screenings of "Stonewall Uprising" documentary will take place all weekend.



# Premium Waters, Inc.

bottled water solutions

5 gallon home and office delivery

Office coffee systems

Filtration coolers

Custom label small bottle



Custom H<sub>2</sub>O  
Label Solutions



Premium Waters, Inc.  
Is proud to support the  
2010 Pridefest Festival

CHIPPEWA<sup>®</sup>  
Spring Water

Contact us today for our  
New Customer Offer.  
[premiumwaters.com](http://premiumwaters.com)  
Eddie Zeman - 414-397-7357



### Stonewall Stage

Located on the Southeast end of the grounds, this smaller stage area hosts intimate performances and discussions on topics important to the LGBT community. Sunday, couples take part in private and group commitment ceremonies. After hours, be sure to stop in for 8:00PM film screenings by the Milwaukee LGBT Film Festival.

### Youth Village Stage

Youth have the opportunity to enjoy PrideFest as well. Various programming for children and teenagers is available throughout the weekend. Play games, create art, win prizes! The Youth Village Stage is behind the food vendors, east of the Marketplace.



### Children's & Family Stage Area

**Sponsored by Wisconsin Rainbow Families (WRF)** - a volunteer organization and community space dedicated to supporting LGBT Families and friends located throughout the State of Wisconsin.

The Children's & Family Stage is a fun place for families to come and enjoy Pride. We have many different types of acts and activities for children of all ages. Magic, music, storytelling, exciting animals and family game shows!

### Milwaukee Gay Arts Center Stage

**MKEGAYARTSCTR**  
Fine Arts Gallery & Performance Theatre

After 6:00pm, the Children's & Family Stage turns itself over to theater, and art presented by the Milwaukee Gay Arts Center. From belly dance, to musical theatre, to comedy there is something for all artistic tastes.

The Wisconsin Cream City Chorus presents... <sup>women</sup>

# SHAKESPEARE IN SONG

Under the direction of Kristen L. Weber

Unitarian Universalist Church West  
13001 W. North Avenue • Brookfield, WI

Advance tickets: \$15.

\$20 at the door.

Get more info at [creamcitychorus.org](http://creamcitychorus.org).

**Like us on Facebook!!**

**Saturday,  
June 18,  
at 5 p.m.  
& 7:30 p.m.**

**"Dinner Theater Lite"**

Doors open a half hour early for seating and food service. Please come early!



Join us next year for our

**25<sup>th</sup> Anniversary Season!**

Dozens of old favorites, and all the best you've come to expect from the WCCC!

Watch our website & Facebook page for details.

### Food Vendors

Several restaurants and other food vendors offering a variety of foods can be found to the east and north ends of the Miller Lite Main Stage and throughout the grounds.

### Marketplace

Need to shop? We can help! Visit the Marketplace on the south end of the Miller Lite Main Stage for a great variety of business vendors.

### Organizational Vendors

Learn about and support local and national LGBT and LGBT-friendly organizations. Their booths can be found throughout the grounds stretching from the main gate entrance to the lake shore.

**D.I.X.  
PRIDEFEST PARTY  
JUNE 10TH - 12TH**

**DRINK SPECIALS  
DJ & DANCING  
FRI-SUN**

**739 S. 1ST STREET**





**When he asks. You should know.**  
**Get Tested. It's Free!**



Be sure to  
stop in at  
our booth  
at PrideFest  
this year!

**BESTD**  
**CLINIC**

**Hours:**  
**Mondays & Tuesdays**  
**6:00pm - 8:30pm**

**We Provide:**

- Hepatitis B Vaccinations for straight men and women.
- Anonymous or name associated HIV testing & counseling.
- STD testing and treatment for men.
- Hepatitis A & B Vaccinations for gay or bisexual men.

**1240 East Brady St • Milw., • 414-272-2144 • [contactus@bestd.org](mailto:contactus@bestd.org)**



7:00p.m. **MILLER LITE MAINSTAGE**

Vassy Los Angeles, CA, Pop/Soul/Rock

[www.kissMyVassy.com](http://www.kissMyVassy.com)



The mysterious dark haired beauty hails from the tropics of Australia, and her unique soulful and quirky voice can be heard all over US television from her national TV Campaign for The Ladders, to Grey's Anatomy.

7:30p.m. **Milwaukee Gay Arts Center (MGAC) Stage**



No composer is safe from these audacious vocalists who dare to "defy gravity," confront "taboos," and can't wait "one day more" to go "out tonight" and "all that jazz." [www.milwaukeegayartscenter.org](http://www.milwaukeegayartscenter.org)

8:00p.m. **MILLER LITE MAINSTAGE**

**PrideFest 2011 Opening Ceremony**

Since 1987 the city's Lesbian, Gay, Bisexual and Transgender (LGBT) community has assembled to celebrate its diversity and unity in the great Milwaukee tradition of a "fest." Our first Pride gatherings were humble. Attendance numbered dozens. Now, 24 years later, tens of thousands of LGBT people, their friends, families and allies attend our internationally renowned PrideFest. With top name entertainment and a broad spectrum of offerings from belly dance to volleyball, it is one of the world's greatest Pride celebrations.

The opening ceremony begins with a presentation of our nation's flag by the Veterans Do Ask Do Tell Color Guard. A quartet from the Florentine Opera chorus under the direction of chorus master Scott Steward will sing our National Anthem. PrideFest president, Scott Gunkel will then introduce its board of directors, community leaders and sponsors, the people who make PrideFest possible.



**PrideFest Medal Honors**



Awards have been part of PrideFest for most of its 24-year history. They recognize community leaders, organizations and volunteers for their tireless dedication to the cause of LGBT equality. All contribute to our mutual goal of creating positive change in our LGBT community.

This year, PrideFest production director Peter Minns presents the PrideFest Medal for Community Achievement to Maria Cadenas, former executive director of Cream City Foundation for her extraordinary development of philanthropy in the



# CHICAGO

## GO PRIDE

OUT & ABOUT

## NEWS REVIEWS NIGHTLIFE

Scan me!

Everything you need to navigate Chicago's LGBT community on the **GO!**

iTunes is a trademark of Apple Inc., registered in the U.S. and other countries. The iTunes logo is a trademark of Apple Inc.

iTunes

*Use your iphone to scan the code or go online to visit* **ChicagoPride.com**

Find it in the iTunes app store



Improving the lives of  
**transgender** individuals,  
loved ones, and providers  
since 1994:

- providing resources
- building strong connections
- empowering personal growth





LGBT community and to Diverse & Resilient, Milwaukee's capacity building organization, for the five year anniversary of the PrideFest Health & Wellness Area.



**Diverse & Resilient**

This year PrideFest recognizes two volunteers for their PrideFest service.

Following the award presentations, Scott Gunkel will officially declare the opening of PrideFest 2011. To conclude the Opening Ceremony, members of Women's Voices Milwaukee and the city's gay men's choir, City of Festivals Men's Chorus sing "Stand Up and Be Proud." Composed by Tori Fixx, Scott Malcom, Corky Morgan and Yolanda Roth.

#### 8:15p.m. RAINBOW STAGE

<http://www.catherineholder.com>

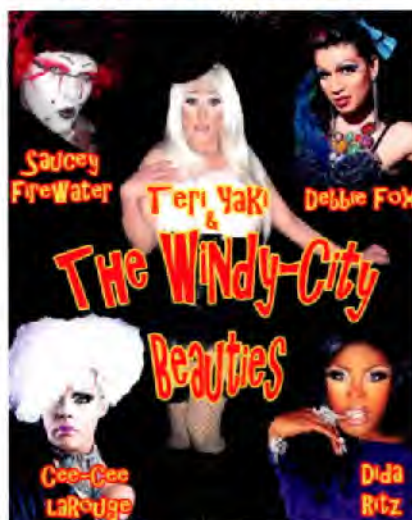
**Catherine Holder**



Nashville, TN  
Pop/ Blue-eyed Soul

Combine the voice of Dusty Springfield or a female Michael Buble with the energy & stage presence of Tina Turner or Beyonce, and you get Catherine Holder.

#### 8:45p.m. MILLER LITE MAINSTAGE



#### 9:00p.m. Milwaukee Gay Arts Center (MGAC) Stage

**Brian Myers.** Milwaukee, WI, Rhythm & Blues  
Milwaukee native Brian Myers is a versatile performer and composer, with roles in musical theatre, opera, and drama to his credit. He is most in his element singing his own brand of New Orleans-stained rhythm and blues.



**Brian Myers**

#### 9:30pm RAINBOW STAGE

**Deven Green**

Los Angeles, CA <http://www.devengreen.com>



Deven Green is an LA-based, award-winning comedienne (and ukulele player) who has single-handedly fingered-blasted the American lexicon with her nefarious "Welcome To My Home" parody videos as well as being "Mrs. Betty Bowers, America's Best Christian."

#### 11:00p.m. RAINBOW STAGE

**Brew City Bombshells Burlesque**

Milwaukee, WI, Neo-Burlesque

**Brew City  
BOMBHELLS  
+ BURLESQUE +**

<http://www.facebook.com/pages/Brew-City-Bombshells-Burlesque/181919585176781?sk=info>  
Since May of 2009, The Brew City Bombshells Burlesque is Milwaukee's local troupe of sassy and classy tassels twirlin' ladies. Featuring award-winning dancers, comedy acts, belly dancers, and a variety of other performers. The troupe channels their inner Gypsy Rose Lee in their performances, paying homage to old time striptease. "The Brew City Bombshells Burlesque are strong supporters of Women's Liberation; but instead of burning our bras, we sequin them."



**DIESEL PROJECK RAW  
ANDREW CHRISTIAN  
DESIGUAL CIVIL SOCIETY  
ZANAROB GINCH GONCH  
LOCAL CELEBRITY MAVI PAZZO  
VINTAGE REVOLUTION NEWD  
DIRTY EARTH WET CEMENT**

**WHITE STAR**

524 N WATER STREET 414.226.1957

1 BLOCK NORTH OF MILWAUKEE PUBLIC MARKET

**MENSGEAR**

MILWAUKEE'S AFFORDABLE  
MEN'S CLOTHING LOUNGE

**\$10 OFF**

with a purchase of \$50 during the week of pride fest



Visit [facebook.com/shopwhitestar](http://facebook.com/shopwhitestar)  
and become a fan for more savings!



# **WELCOME**

**TO YOUR NEW HOME**



***“United by Diversity, United in Diversity”***

**MILWAUKEE LGBT COMMUNITY CENTER**

252 East Highland Avenue



# FRIDAY MILLER LITE MAINSTAGE HEADLINE SHOW

10:00p.m.

## Mo'Nique

Mo'Nique rose to fame in the television series *The Parkers* while making a name as a stand-up comedian hosting a variety of venues, including *Showtime at the Apollo*. She transitioned to film with roles in such films as *Phat Girlz*, and *Welcome Home Roscoe Jenkins*, and saw incredible success with the 2009 release of *Precious*. Not only did she receive critical praise for her villainous role in the film, she has won well over 25 awards including an Academy Award for Best Supporting Actress, a Screen Actors Guild Award, a Golden Globe Award, and a BAFTA Award. The host of the BET late night talk show, *The Mo'Nique Show* has long been a fierce ally for the Black LGBT community and a high-profile HIV/AIDS advocate.



## Mo'Nique's RuPaul's Drag Race Opening Invasion!

Hosted by India Ferrah

Dayton, OH, Drag Queen  
<http://www.indiaferrah.net>

India Ferrah is Originally from Roanoke, VA where she grew up becoming a pageant girl and has held over 17 Local and Bar Titles. India currently resides in Dayton, OH with her Husband Nickolas, and Runs her own Business Creating Wigs, Costumes, Gowns, Mixes and she is on the road touring all over the country doing what she loves! Entertaining!!



Hosted by Mimi Imfurst

NYC, NY

Drag Queen

One of New York City's most outrageous drag queens, this hard working gal was a recent competitor on RuPaul's Drag Race, and tours cross country with her group XELLE.



## Special guest appearance by: Stacy Layne Matthews

Back Swamp, NC Drag Queen  
Hollywood came knocking and plucked this southern plus-size belle from small town NC and she made big waves on season 3 of RuPaul's Drag Race standing out as one the token 'plus size queens'.



## Opening for Mo'Nique is Shangela as "LaQuifa"

Los Angeles, CA  
Drag Comedian

<http://www.shangela.com>

Shangela LaQuifa Wadley (D.J. Pierce) hosts and performs as a drag entertainer in Los Angeles, and is a cast member of the 2<sup>nd</sup> and 3<sup>rd</sup> seasons of the hit reality series RuPaul's Drag Race. On the big screen, Pierce recently starred in the short film *Body of a Barbie*, which aired on BET as a finalist in its 'Lens on Talent' series.



## 6:00p.m. - Midnight 2001 PUMP! Dance Pavilion

6:00p.m. DJ Kelly

Milwaukee, WI DJ

This year marks Kelly's 12<sup>th</sup> consecutive appearance on the PrideFest Dance stage. Kelly has been instrumental in helping PUMP! Milwaukee make PrideFest's Dance Pavilion one of the most popular areas at PrideFest.



9:00p.m. Sophia May

Bristol, England  
Dance/Club

Hit the #1 spot in the US Billboard Hot Dance Airplay Chart for three weeks in a row with I Can't Help Myself (Nervous Records) and was voted #2 Dance Airplay Song of 2008 in Billboard. It was also #1 on Hot 96 Charts in the US.

<http://www.sophiamaymusic.com>



9:15p.m. DJ's Teri Bristol & Psycho-Bitch

Chicago, IL House/Club

10:30p.m.

DJ Brett Locascio

Chicago, IL

High Energy Vocal/Circuit  
Energy is the one word that describes DJ Brett Locascio's sets. Since 2005, Brett has become a Chicago crowd favorite with his big room vocal and tribal sound that keeps the dance floor bumping all night long. Brett is a



Hydrate Chicago DJ, joining a list of some of the biggest DJ talents in the world; such as Ralphie Rosario, Tony Moran, Paulo, Chris Cox, and the list goes on.

<http://podomatic.com/brettllocascio>

11:00p.m. XELLE

New York, NY Pop <http://www.xellemusic.com>



Praised by Perez Hilton as "campy deliciousness," XELLE is a new girl group which formed in 2010 and is made up of singing and songwriting powerhouses JC Cassis and Rony Goffer and drag queen sensation Mimi Imfurst from RuPaul's Drag Race.

11:10p.m. DJ Brett Locascio

Chicago, IL High Energy Vocal/Circuit

7:30p.m. DJ's Teri Bristol & Psycho-Bitch

Chicago, IL  
House/Club

These award winning female DJs have been pioneers in the music and club scene for almost 3 decades. Together and independently, they have been the force and the drive behind some of the fiercest parties in the United States.

<http://www.facebook.com/teri.bristol>





# BOOM

**Boom is a Proud Sponsor of the  
Milwaukee Pride Parade**

**Watch the Pride Parade  
Sunday in front of our bars**

**Beer Bust  
during the Parade**

**Stop in and Ride the  
BOOM Shuttle to & from  
the Pride Fest grounds  
Friday & Saturday**

**Fri. June 17th Free Beer Friday for those on our email list  
Not on? Sign up at [www.Boommmke.com](http://www.Boommmke.com)**

**Sat. June 25th BOOM's Fetish Party! - What are you into?  
(Leather - Rubber - Uniform - Sport - Underwear)**

**Come Play With Us Where Buddies Meet Buddies!**

### Daily Specials:

**Mon.** 2-4-1 Taps of Beer.

**Tues.** \$2 Rail Drinks All Night.

**Wed.** 3-4-1 Taps of Miller Lite - MGD - 64

**Thurs.** 2-4-1 Pinnacle Vodka Cocktails.

**Fri.** Beer Bust 5-9pm Show Tunes in The ROOM with KV 6:30-9 pm

**Sat.** Beer Bust 2-6pm plus 2-4-1 Pinnacle Vodka

**Sun.** \$1 Pints of Domestic Beer & \$2 Pints of Premium Beer

**Happy Hours: Mon. - Fri. 5-8 pm with 2-4-1 on Everything  
Sat. & Sun. Open at 2pm**



**2 Great Bars 1 Location  
Pool Tables - Darts - Games - Pizza - Patio**

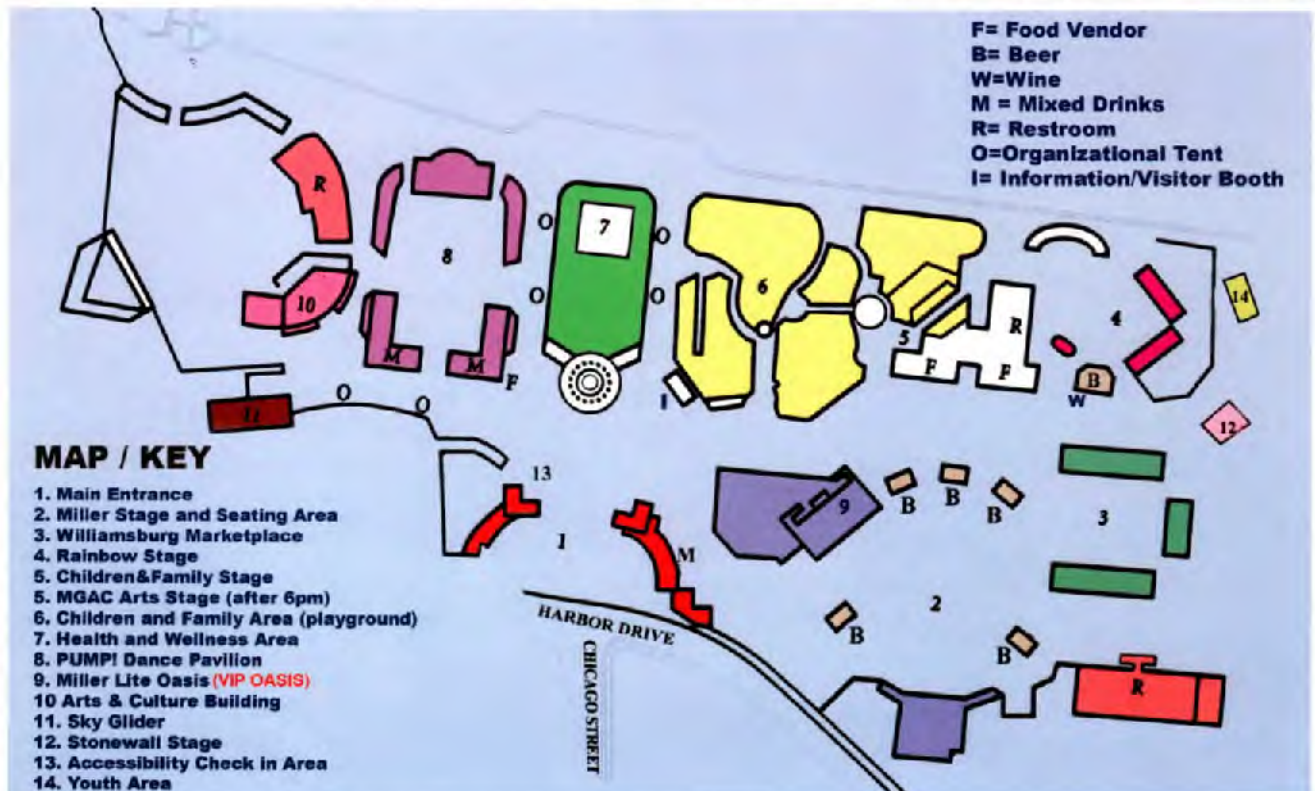
**625 S. 2nd St. Milwaukee (414) 277-5040**

**THE  
ROOM**  
Perversion  
With A Touch Of Class



# FRIDAY JUNE 10 3PM - MIDNIGHT STAGE LINEUP

	Miller Lite Mainstage	PUMP! Dance Pavilion	Rainbow	Stonewall	Health & Wellness	Children & Family/MAGC after 6 pm	Youth
TIME							
3:00	The Duke of Uke and His Novelty Orchestra	Fred Astaire Dance Demonstrations and Teachings	Süss				
4:00			London Bridgez				
4:30	Ronnie Nyles and Tallulah Who	Windy City Beauties					
5:00							
5:45			Immigrant Punk				
6:00		6:00p.m.-Midnight PUMP! design lighting & effects by IG Designs, laser show by Lasersonics, Video Content by VJ Brve				MGAC - Pride of Dancers-International Dance Extravaganza	
6:30		6:00PM DJ Kelly		Interfaith Prayer Service			
7:00	Vassy		Katie Quick				
7:30		DJ's Teri Bristol & Psycho-Bitch				MGAC-Two and a Half Twinks:	
8:00	PrideFest 2011 Opening Ceremony and PrideFest Medal of Honor Awards						
8:15			Catherine Holder				
8:45	Windy City Beauties						
9:00		Sophia May				MGAC Brian Myers	
9:15		DJ's Teri Bristol & Psycho-Bitch					
9:30			Deven Green				
10:00	Headline Show Featuring Mo'Nique						
10:30	RuPaul's Drag Race Opening Invasion! HEADLINE SHOW Hosted by India Ferrah, and Mimi Infurst	DJ Brett Locascio					
11:00	Special guest appearance by: Stacy Layne Matthews	XELLE	Brew City Bombshells Burlesque				
11:10	And Opening for Mo'Nique is Shantele as "LaQuila"	DJ Brett Locascio					
MIDNIGHT	GROUPS CLOSED	GROUPS CLOSED	GROUPS CLOSED	GROUPS CLOSED	GROUPS CLOSED	GROUPS CLOSED	GROUPS CLOSED







231 E Buffalo St | Mke WI 53202  
414 273 4289 | facebook.com/btwlounge

5 blocks west of the mid-gate  
231 e. buffalo st  
between water & broadway



come out and celebrate

**milwaukee**  
**pridefest**  
**2011**

**june 10th - 12th**

**pridefest's**  
**nearest**  
**lgbt bar**

**friday june 10th** open at noon  
**drag show** | 11pm

hosted by miss anastasia deverreux  
milwaukee's #1 female impersonator  
free shuttle

**saturday june 11th** open at 10am  
**disco brunch** 10:30am - 3pm | \$30  
all-you-can-eat buffet | bottomless mimosas  
hosted by miss anastasia deverreux  
milwaukee's #1 female impersonator  
shuttle continues

**sunday june 12th** open at 10am  
**disco brunch** 10:30am - 3pm | \$30  
all-you-can-eat buffet | bottomless mimosas  
shuttle continues  
**btw pridefest wrap party** | 4pm - close

free shuttle service | 1pm - 1am  
every hour on the hour  
to & from btwlounge, pridefest,  
& other lgbt bars



# PRIDEFEST 2011 SATURDAY STAGE LINEUP

**12:00p.m. MILLER LITE MAINSTAGE**

**Tret Fure**

Madison, WI Rockin' Aggressive Folk



[www.tretfure.com](http://www.tretfure.com)

One of the most prolific artists in the contemporary singer-songwriter arena, Tret Fure has released 13 albums and CD's over the course of her 40 year career.

**12:00p.m. PUMPI Dance Pavilion**

**Chicago Gay Men's Chorus**

Chicago, IL Choral <http://www.cgmc.org>

**12:00p.m. Arts and Culture**



The Chicago Gay Men's Chorus (CGMC) has been an integral part of Chicago's cultural and gay communities since 1983.

**Prints by Todd Rongstad** vintage images

*presented by: Milwaukee Gay Arts Center*

On display all weekend, Todd Rongstad's poster-like prints present a look at LGBT consciousness and same-sex bonding of those early pre-Stonewall days. Rongstad has collected vintage images that contain more than a hint of LGBT relationships. In their innocence these old photographic documents belie an era in which overt expressions of LGBT behavior were rarely articulated. Rongstad enhances the original captured moment with texts to memorialize the individual images.

**12:00p.m. Children's Amphitheater**

**Bob Bohm's Family Magic Show**

**Magic & Family Fun**

[www.bohmsmagic.com](http://www.bohmsmagic.com)

A superb blend of baffling magic and hilarious comedy, this family oriented show is filled with lots of audience participation and fantastic fun.



**12:00 Arts and Culture Building**

**The UWM Library LGBT Archive**

*presented by Milwaukee Gay Arts Center*

On display all weekend, The LGBT collections in the Archives Department provide a unique perspective on the emergence of a gay and lesbian movement in Milwaukee since the late 1960s. Topical strengths of its collections include the gay liberation movement, gays and lesbians in the military, HIV/AIDS, and marriage equality. The UWM Library LGBT Archive display gives insight into this rare and important collection.

**12:00p.m. 2011 PrideFest Volleyball Tournament**

**Urban Park Courts** From 12-4:30pm there will be Round Robin play to establish seeding.

[www.milwaukeegayvolleyball.com](http://www.milwaukeegayvolleyball.com)

**12:00p.m. Open Play Volleyball All Day**

**Health & Wellness Area**

Open play is from 12 to dark.



**12:00p.m. Health and Wellness Area**

**HIV testing hours at BESTD's Big Tent of Testing Saturday Noon-8pm**

**12:00p.m. Arts and Culture Building**

**The Milwaukee LGBT History Project**

On display all weekend, The History Project's exhibit has been a popular attraction at each PrideFest since 2003. Each year a different aspect of Wisconsin's LGBT history is seen by thousands of visitors. The exhibits represent the development of the LGBT community over the past decades both before and after Stonewall. This history is built upon by the current and continuing LGBT events for future generations. The collection of photos, documents and ephemera documents not only the LGBT community, but also serves as a source of information for the non-LGBT community to better understand our contributions to the community as a whole and our specific history. The 2011 LGBT History Project exhibit features an interactive time-line of significant moments in our community's history. Also screenings of "Stonewall Uprising" documentary take place all weekend.

**12:30p.m Health & Wellness Stage**

**Opening Ceremony**



[www.yelp.com/milwaukee](http://www.yelp.com/milwaukee)





# CIRCUS

GET YOUR FREAK ON ♦ OPENING JUNE 4TH.



Burlesque shows  
VIP areas  
Valet parking  
Party room rentals  
Outdoor patio

FRI SAT SUN  
7PM 8PM 11AM

414-301-1424  
906 S Barclay Ave  
[theCIRCUSclub.com](http://theCIRCUSclub.com)







## YOU CAN SENSE IT.

The feeling is in the air. Something's about to happen. Maybe something big. Do you go for it? Listen to your hunch and good things could follow.

**Play.**

### POTAWATOMI

BINGO • CASINO™

[PAYSBIG.COM](http://PAYSBIG.COM) | MILWAUKEE

1721 WEST CANAL STREET • MILWAUKEE, WI 53233 • 1-800-PAYSBIG • [PAYSBIG.COM](http://PAYSBIG.COM) • OPEN 24/7  
MUST BE AT LEAST 21 YEARS OLD TO ENTER CASINO; 18 TO PLAY BINGO • WINNERS RESPONSIBLE FOR ALL TAXES  
MANAGEMENT RESERVES ALL RIGHTS • GAMBLING PROBLEM? CALL 1-800-428-2535  
©2011 FOREST COUNTY POTAWATOMI COMMUNITY, WISCONSIN



**12:30p.m. Children's Amphitheater**

**Pocket Lady Story teller**

[www.kathleenmohr.com](http://www.kathleenmohr.com)

Pocket Lady (TM), is full of lively stories - traditional and original - told with sensitivity and humor!

**1:00p.m. STONEWALL STAGE**

**Talk to Your Kids about Sex**

How do you convey healthy messages about sexuality while also setting appropriate boundaries? Come to this interactive workshop to gain new perspectives. Led by sexuality educator Laura Anne Stuart, who is an instructor, teacher trainer, and curriculum development consultant for the Our Whole Lives sexuality education curriculum series and Lucky Tomaszek proud mother of three.



Pocket Lady

**1:15p.m. RAINBOW STAGE**

**Katie Todd**

Chicago, IL All/Pop/Rock

<http://www.katietodd.com>

"a breath of fresh air that the Chicago music scene has been waiting for" - Chicago Arts and Entertainment Magazine. After playing to a packed House of Blues, Lollapalooza, and most recently, Lilith Fair, Katie returned to the studio this past winter completing her fourth studio album



**1:15p.m. MILLER LITE MAINSTAGE**

**Random Order**

Toronto, Canada Reggae/Ska

<http://www.randomorder.ca>

Purveyors of a ska-indebted sound blended with punks spirit, this four-piece delivers a high-octane concoction of beefy ska rhythms, propulsive drums and trombone, ignited by vocalist/guitarist Lynn Phillips' rock attitude.



**1:15p.m. Health and Wellness Stage - Massage & Reiki Demonstration**



**2:00p.m.**

**PUMPI Dance Pavilion**

2011 PrideFest  
Wisconsin Drag Show

Hosted by  
Bryanna Banx\$, Miss Gay  
Wisconsin USOFA 2011,  
and Wisconsin Royalty,  
Shannon DuPre.

**aaron smith**

[aaron.smith@cbexchange.com](mailto:aaron.smith@cbexchange.com)

262 240 2666

**SPECIALIZING IN  
RESIDENTIAL REAL ESTATE SALES**

**HAPPY PRIDEFEST 2011**



1339 w mequon road  
mequon wi 53092



RESIDENTIAL BROKERAGE

Operated by Coldwell Banker Residential Real Estate LLC

**\$35 1-Hour**

**Session**

**with this ad**

[www.MilwaukeeReiki.org](http://www.MilwaukeeReiki.org)

**Milwaukee Reiki  
& Massage**

Call Jeffrey 414-793-4828  
or Denise (Reiki only) 414-803-3743

**Made with**

**PRIDE  
CLUB  
ICON**

**Happy  
Pridefest  
Milwaukee!**

[www.club-icon.com](http://www.club-icon.com)  
6305 120th Ave • Kenosha WI • 262-857-3240



**2:00p.m. Children's Amphitheater**

**Getting Excited about Science**

**Instructional Scientific fun!** [www.getscience.net](http://www.getscience.net)

Fast moving 45 minutes of scientific fun, featuring liquid nitrogen, spinning water, and audience participation.

**2:15p.m. Health and Wellness Stage**

**Women's Voices**

**2:30p.m. MILLER LITE MAINSTAGE**

**Sister Funk** <http://www.sisterfunk.com>

New Haven, CT Pop Rock



Don't let the name fool you, these girls do more than funk! Experience them for yourself and get ready for a heaping spoonful of undeniable entertainment!

**2:30p.m. RAINBOW STAGE**

**Ryan Cassata**

Long Island, NY

Pop Punk/  
Anti-Folk

Ryan Cassata is a teen singer/ songwriter from Long Island, NY. He has performed over 175 shows & has earned thousands of fans from multiple continents across the globe. A legend in the making.



**2:30p.m. STONEWALL STAGE**

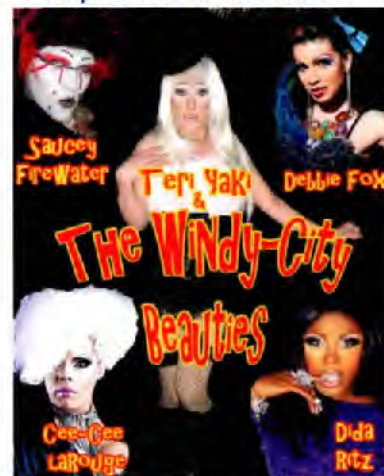
**Hits the Spot!**

Sexuality educator Laura Anne Stuart will facilitate an informative workshop on these erogenous zones, techniques to stimulate them, and how they can be part of safe and healthy sexual play. Laura is the owner of the Tool Shed erotic boutique and the author of SEXpress, a weekly sex advice column in the Shepherd Express.

**3:15p.m. Health and Wellness Stage**

**Nia Movement Demonstration**

**3:30p.m. PUMP! DANCE PAVILION**



**3:45p.m. RAINBOW STAGE**

**The Barons of Tang**



[www.wisconsincapitolpride.org](http://www.wisconsincapitolpride.org)



twitter



@WICapitolPride

## Brick By Brick Wisconsin Capitol Pride 2011

Celebrate Equality & Diversity  
in Madison

Pride Weekend August 20 & 21

*"Brick by Brick, We Will Build A Strong Foundation And  
Pave The Road That Will Lead Us to Equality"*

### Pride Parade & Rally

Sunday August 21  
Down Town Madison  
12:00 Noon

### The "Big Gay Brunch"

Will Be Held At  
Participating Restaurants  
In the Downtown Area  
Prior To The Parade

\* Watch for Special Pride Weekend  
Hotel Rates Coming Soon!

**\*Please Visit Our Website & Facebook For More Details\***





**Save the Dates!**  
**October 20-23, 2011**

# **24th Annual Milwaukee LGBT Film/Video Festival**

[arts.uwm.edu/lgbtfilm](http://arts.uwm.edu/lgbtfilm)

PECKSCHOOL  
OF THE ARTS  
DEPARTMENT OF FILM

MILWAUKEE  
LGBT FILM/VIDEO  
FESTIVAL

UNIVERSITY of WISCONSIN  
UWMILWAUKEE



**The Barons of Tang** [www.thebaronsoftang.com](http://www.thebaronsoftang.com)

Melbourne, Australia World/Punk

Hailing from the Shores of Australia, The Barons of Tang are a high energy alternative Gypsy band that has toured non stop for the past 4 years.

**4:00p.m. MILLER LITE MAINSTAGE**

**Girl Next Door**

Chicago, IL Party Rock/Cover Band

<http://www.girlnextdoormusic.com>



Girl Next Door is an entertaining 4 piece female cover band that promises a full rich sound, high energy performances and unmatched professionalism.

**4:00p.m. Children's Amphitheater**

**Bob Bohm's Survivor Family Game Show**



[www.bohmsmagic.com](http://www.bohmsmagic.com)

"Survivor" meets "Gilligan's Island" in this hilarious interactive event.

**4:00p.m. STONEWALL STAGE**

**Alliance School Pride Graduation**

Come join graduates of the Alliance School at the Alliance School Graduation Ceremony!

**4:15p.m. Health and Wellness Stage**

**Shoreline Milwaukee**

**5:00p.m. PUMPI Dance Pavilion**

**Fetish & Fantasy 2011**

Chicago, IL Leather/Fetish

<http://www.imrl.com>

The show will feature Leather Demo, Leather Fashions, Title Holders, and much more.

This year's Emcee will be Frank Norwicki from Washington, DC a key figure and well known Leatherman. And of course, The Abbey of the Brew City Sisters will be on hand too.

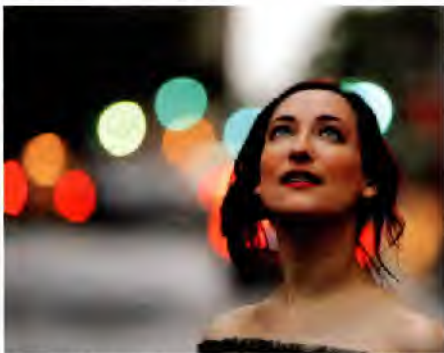


**5:00p.m. RAINBOW STAGE**

**Rachael Sage**

New York, NY Art-Pop

<http://www.rachaelstage.com>



Rachael Sage she has earned a loyal following for her infectious melodies, poetic lyrics, and often-outrageous, colorful stage banter.

**5:00p.m. STONEWALL STAGE**

**Latin Issues - Panel Discussion at PrideFest**

Join Assemblywoman JoCasta Zamarripa as she welcomes Daniel Hernandez for a Latin Issues Panel Discussion. Hernandez is Congressional Intern for the Office of AZ Congresswoman Gabrielle Giffords, and is credited for saving her life after a gunman shot her and 18 other people. Join the discussion with various Latino Milwaukee leaders to talk about the need for higher education for the LGBT community and building relationships and outreach within the community.

**5:15p.m. Health and Wellness Stage**

**Zumba Demonstration**

**5:30p.m. MILLER LITE MAINSTAGE**



Ivri Lider

Tel Aviv, Israel Pop Rock <http://www.ivrilider.com>

Since releasing his 1997 debut, Lider has been one of Israel's biggest selling artists of all time.

**5:30p.m. Youth Village**

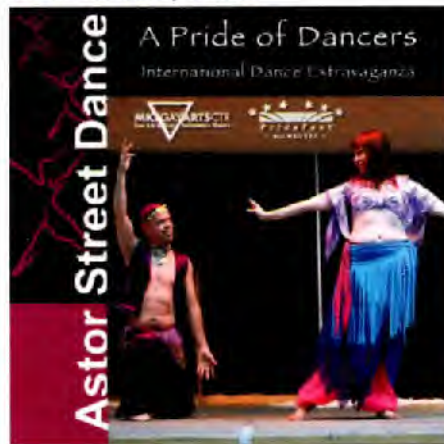
**Krazy Kre8ions**

Can you and your team create the best outfit using everything from the Project Q "Challenge Box?"

**6:00p.m.**

**Milwaukee Gay Arts Center (MGAC) Stage**

[www.milwaukeebellydance.com](http://www.milwaukeebellydance.com)



**KENWOOD**

KENWOOD UNITED METHODIST CHURCH

Kenwood Young Artists Series  
Celebrates PrideFest with

ORGANIST

**MARK FIDELDY**

in a program of classical organ works

Kenwood United Methodist Church is a 'Reconciling Congregation'



**SUNDAY JUNE 12**

**3:00 PM**

Kenwood Church is located at  
2319 E. Kenwood Blvd.  
across from UWM Student Union  
Worship every Sunday at 10:30am

Admission is free. Free-will offering  
[www.kenwood-umc.org](http://www.kenwood-umc.org)



## All Style Quality Fence, LLC

"Improving Wisconsin One Yard At A Time"

RESIDENTIAL & COMMERCIAL  
FULLY INSURED



**\$50 OFF jobs under \$1000**  
**\$100 OFF jobs over \$1000**

- Wood
- Chain Link
- Aluminum
- Vinyl
- Colored Chain Link Systems
- Custom Gates
- Horse Rail

26 YEARS EXPERIENCE  
FREE ESTIMATES

**(262) 513-1297**

[www.allstylefence.com](http://www.allstylefence.com)

# fair wisconsin



Fair Wisconsin is proud to be your statewide LGBT advocacy organization

From our **Milwaukee Board Members:**

## HAPPY PRIDE

### Fair Wisconsin Education Fund

Robert Starshak, Ginny Finn, George Marek,  
Ruth Irvings, Steven Miller

### Fair Wisconsin Inc.

Jason Rae, Ross Draegert, Dennis Kohler, Laurie Guilbault

[fairwisconsineducationfund.com](http://fairwisconsineducationfund.com) | [fairwisconsin.com](http://fairwisconsin.com)

**QUEST HOME LOAN CENTER IS PROUD TO BE A PARTNER  
AND STRONG ADVOCATE TO THE MILWAUKEE LGBT  
COMMUNITY CENTER.**

**We helped the LGBT Community Center celebrate their dream of a new home and we'd love to help you do the same. Whether you're looking to buy or refinance, we want to work with you.**

**Contact us and let's start building a relationship.  
Quest Home Loan Center is making the home  
buying experience fun again!**



[WWW.QUESTHOMELOANCENTER.COM](http://WWW.QUESTHOMELOANCENTER.COM)



**QUEST<sup>TM</sup>**  
**HOME LOAN CENTER**  
A Division of Network Funding, L.P.



**6:30p.m. STONEWALL STAGE**

**Playing with your food!**

[www.ourdailyalt.com](http://www.ourdailyalt.com)

Come get your foodie on with chief Felisha of Our daily Salt! She will show you how to create mouth watering healthy dishes for the whole family!

**6:45p.m. RAINBOW STAGE**

Los Angeles, CA Pop/Soul/Rock

<http://www.kissMyVassy.com>

**Vassy**



The mysterious dark haired beauty hails from the tropics of Australia, and her unique soulful and quirky voice can be heard all over US television from her national TV Campaign for The Ladders, to Grey's Anatomy.

**7:00p.m. MILLER LITE MAINSTAGE**

Brooklyn, NY Alternative/Hard Rock

<http://www.theaugustinfinity.com>

The August Infinity is an all-American five-piece rock band based in Brooklyn, NY.



**7:30p.m. Milwaukee Gay Arts Center (MGAC) Stage  
Comedy Sportz Improvisational Comedy**



Milwaukee, WI Improvisational Comedy

[www.comedysportzmilwaukee.com](http://www.comedysportzmilwaukee.com)

The Internationally recognized ComedySportz is an improvised, suggestion-based comedy show, fun for all ages that started right here in Milwaukee! See them here and year-round at their regular arena in Walker's Point, now in their 26th year!

**7:45p.m.**

**RAINBOW STAGE**

**V.I.T.A.L. Emcee**

Long Beach, CA

Hip-Hop/Rap

With influences ranging from Miles Davis to Pink Floyd, Judas Priest & 2Pac, Long Beach's V.I.T.A.L. Emcee has recently gained notoriety for his inclusion on the official 2009 and 2011 Grammy Ballots in over seven categories each, including Best New Artist and Record of the Year.



**8:00p.m. STONEWALL STAGE**

Film Screenings by Milwaukee LGBT Film Festival

Enjoy a variety of LGBT films screening every night starting at 8pm.

**8:30p.m. MILLER LITE MAINSTAGE**

**Pam Ann**

Australia

Comedy



Pam Ann is the alter-ego of Australian comedienne, writer, producer Caroline Reid. Reid's portrayal of the gutsy and glamorous air-hostess is unique and wildly hilarious. Pam Ann has been featured in an advertising campaign for British Airways, and continues to sellout tours globally.

**8:45p.m. RAINBOW STAGE**

**Ariel Aparicio**

Brooklyn, NY Indie Rock



Cuban-born and Miami-raised, Ariel Aparicio knows rock and roll. With a sound that has been compared to David Bowie, The Stooges and The Strokes, he grabs a hold of this knowledge plus his own life experiences and hoists them apologetically onto his recordings for all to hear.

**9:00p.m. Milwaukee Gay Arts Center (MGAC) Stage**

**Brody Hess**



Brody Hess is a 19-year-old musician, writer, and student from SE WI. PrideFest 2011 marks the first anniversary of his move to Milwaukee and coming out. A pianist since four, he's thrilled to share his love of music in celebration of the freedom we've earned as individuals and a community.

**9:30p.m. FIREWORKS**

**The PrideFest tradition continues!**

**10:00p.m.**

**RAINBOW STAGE**

**Bitch**

New York, NY

Folk/Punk

[www.bitchmusic.com](http://www.bitchmusic.com)

Bitch plays electric violin like a rock guitar, and adds layers of unique instrumentation to create a sonic symphony. Bitch continues to push the envelope with her wild-spirited avant-garde theatrical punk/sound and has produced her most listenable and enjoyable album to date.





**Happy 2011 Pride Wisconsin!**

**Body Piercing at it's BEST!**

**Bring in your PrideFest ticket  
And get 20% your sale!**

[www.avant-garde-piercing.com](http://www.avant-garde-piercing.com)

**Avant-Garde®**

Changing the face of the earth, one needle at a time

*\*Offer Valid through 6-20-11\**



**KRUZ**

**HAPPY PRIDE 2011**

354 E National Ave  
(414) 272-KRUZ  
OPEN DAILY 3:00 PM – CLOSE



# SATURDAY MILLER LITE MAINSTAGE HEADLINE SHOW

## 10:00p.m. SALT-N-PEPA

### New York Rap/ Hip Hop

When you speak of "firsts" you can't help but mention this Rap duo sensation. They were the first all-female rap crew. They had the first rap song to be nominated for a Grammy. As one of the first rap artists to cross over into pop mainstream, they helped to lay the groundwork for the music's widespread acceptance in the early 1990's. They paved the way for the likes of TLC, En Vogue, and others. This June 11, They also will become the first Rap group to perform as headliners at PrideFest. Cheryl James and Sandy Denton, otherwise known as Salt-N-Pepa, were not only firsts, they were pioneers who showed the industry that women were more than just window dressing or a gimmick.

Having emerged in the late 1980s with "Show Stopper," an answer to Dougie Fresh's smash hit, "The Show" Salt-N-Pepa established a standard with their string of hits, including "Push It," "Shake Your Thang," "Shoop," and "Whatta Man," as well as their socially responsible mega hit, "Let's Talk About Sex," which catapulted them to the forefront of the national discussion about safe sex and AIDS.

Salt-N-Pepa's fourth album, "Very Necessary," was released in 1993 and On this album,



were memorable hits as "Shoop," and "Whatta Man," in which they teamed with the ladies from En Vogue. But it was "None of Your Business," which captured the 1995 Grammy for Best Rap Performance. On October 12, 2010, Salt-N-Pepa received the I Am Hip Hop Award at the Bet Hip Hop Awards, and by February of this year, they embarked on a national tour entitled Salt N Pepa's Legends of Hip Hop Tour.

## Headline Show Hosts:

### Feast of Fun with

Marc Felton & Fausto Fernos

Chicago, IL [www.feastoffun.com](http://www.feastoffun.com)

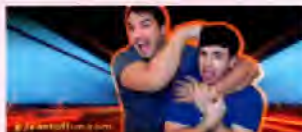
The Feast of Fun podcast is a daily talk show featuring celebrity guests and friends of the LGBT community. The program is a hot mix of social news, rising trends, in-depth interviews and live music sessions- the best of the net in real-time.

## Special Guest Performances by:

Los Angeles, CA



Deven Green is an LA-based, award-winning comedienne (and ukulele player) who has single-handedly fingered-blasted the American lexicon with her nefarious "Welcome To My Home" parody videos as well as being "Mrs. Betty Bowers, America's Best Christian."



**Chris Crocker**  
Internet icon. Been there, done that. Singer/Song-writer, Comedian, Actor, Therapist, Preacher, Edutainer. You name it.



**RuPaul's Drag Race's Carmen Carrera**

and **XELLE**  
New York, NY Pop [www.xellemusic.com](http://www.xellemusic.com)



## 6:00p.m. - Midnight 2001 PUMP! PUMP! Dance Pavilion

Design, lighting and effects by IG Designs, Laser show by Laseronics. Video content by VJ Brye



### 6:00p.m. DJ Plez Denver, CO House Music

Known for many years throughout the Midwest for his inspired house music sets, DJ Plez now calls Denver home and has established himself as one of the Mile High City's most popular DJs as a resident at Compound Basix

### 8:45p.m. LALA Brooklyn, NY Dance/Pop

LALA is a dance recording and performing artist from New York. You might have heard her single "Never Forget You" on BPM Sirius and OutQ Radio

<http://www.lalathemusicartist.com>



### 10:30p.m. RUPAUL'S DRAG RACE: Stacy Layne Matthews Back Swamp, NC Drag Queen

"Drag" may be perceived as acting and theatrics, although Stacy Layne may put on a show for a living, there is a comforting realness that her audience experiences and envelopes as they are exposed to her many layers  
<http://www.stacylaynematthews.com>



### 7:30p.m. DJ John Murges

[www.myspace.com/djohnmurges](http://www.myspace.com/djohnmurges)

Murges has played and held residencies at some of Milwaukee's largest, and well known clubs, as well as numerous events benefiting Milwaukee's gay community and HIV/AIDS organizations.



### 9:00p.m. DJ Dave Audé Los Angeles, CA

**House/Progressive Dance Music**  
Dave Audé has dedicated his life to creating quality dance music. This Grammy nominated producer and DJ, has 70 #1 Billboard Dance tracks to his credit, so far, and is the most sought after remixer in the world.



10:40p.m. DJ Dave Audé  
Los Angeles, CA  
House/Progressive Dance Music

**GRUBER LAW OFFICES, PC**  
"One call...that's all"  
414-276-6666





PRESENTED BY  
**FRESCHETTA**



TICKETS  
**\$20**

LESS IS MORE TOUR  
**NATASHA BEDINGFIELD**  
WITH SPECIAL GUESTS  
**KATE VOEGELE & ANDY GRAMMER**

FRIDAY JUNE 17 • PABST LOWER LEVEL

102.1 A.V. CLUB WELCOME


## DEMETRI MARTIN



MEGA MINI TOUR 2011

SAT. JUNE 25 • PABST | \$31.25 RSVG.

AMERICAN IDOL  
SEASON 9 WINNER



## LEE DEWYZE

WITH SPECIAL GUEST  
**COREY CHOWDER**

FRIDAY JUNE 24 • TURNER | \$17 G/A


WHATEVER YOU DO, DON'T CALL THEM...

## MUPPETS

### HENSON ALTERNATIVE™

## STUFFED AND UNSTRUNG

80 Jim Henson Puppets  
6 Improv Comedians  
1 Wild, Uncensored,  
Live Comedy Show  
Adults Will Love  
(sorry no kids allowed)



FRIDAY SEPTEMBER 23 • PABST

**The Pabst**  
THE RIVERSIDE TURNER HALL

THURSDAY, JUNE 16 • RIVERSIDE  
**MY MORNING JACKET**

SATURDAY, JUNE 18 • RIVERSIDE  
**KEM + ERIC BENET**

TUESDAY, JULY 12 • PABST  
**EMMYLOU HARRIS**

MONDAY, JULY 18 • TURNER  
**YUCK**

FRIDAY, JULY 22 • TURNER  
**RX BANDITS**

JULY 22 & 23 • RIVERSIDE  
**BON IVER**

SUNDAY, JULY 24 • PABST  
**STEVE EARLE & THE DUKES (AND DEUCHESSES) FEAT. ALLISON MOORER**

WEDNESDAY, JULY 27 • TURNER  
**TED LEO AND THE PHARMACISTS**

THURSDAY, JULY 28 • PABST  
**RICKIE LEE JONES**

FRIDAY, JULY 29 • PABST  
**MARC COHN**

FRIDAY, AUGUST 05 • TURNER  
**EELS**

SUNDAY, AUGUST 21 • RIVERSIDE  
**BILL COSBY**

AUGUST 27 & 28 • RIVERSIDE  
**STEELY DAN**

SATURDAY, SEPT. 10 • PABST LOWER LEVEL  
**GENE WEEN**

SATURDAY, SEPT. 17 • RIVERSIDE  
**RODNEY CARRINGTON**

WEDNESDAY, SEPT. 21 • TURNER  
**SWANS**

SATURDAY, SEPT. 24 • PABST  
**CAPITOL STEPS**



# **SATURDAY JUNE 11 NOON - MIDNIGHT STAGE LINEUP**

	Miller Lite Mainstage	PUMP! Dance Pavilion	Rainbow	Stonewall	Health & Wellness	Children & Family/ MAGC after 6 pm	Youth
TIME							
12:00	Trot Funk	Chicago Gay Men's Chorus	Andrea Paquin		Open Play Volleyball All Day	Bob Bohm's Family Music Show	
12:00					HIV testing 12-3 BESTD's Big Tent		
12:30					Opening Ceremony	Pocket Lady	
1:00		Chicago Gay Men's Chorus		Talk to Your Kids about Sex			
1:15	Random Order		Katie Todd Band		Massage & Reiki Demonstration		
2:00		2011 PrideFest Wisconsin Drag Show				Getting Excited about Science	
2:15					Women's Voices		
2:30	Sister Funk		Ryan Cassata Music	Hits the Spot!			
3:15					Nia Movement Demonstration		
3:30		Windy City Beauties					
3:45			The Barons of Tango				
4:00	Girl Next Door			Alliance School Pride Graduation		Bob Bohm's Survivor Family Game Show	
4:15					Shoreline Milwaukee		
5:00		Fetish & Fantasy 2011	Rachael Sage	Latin Issues - Panel Discussion			
5:15					Zumba Demonstration		
5:30	Ivri Lider						Krazy KreBions
5:45							
6:00		PUMP! design lighting & effects by IG Designs, laser show by Lasertronics, Video Content by VJ Brys				MAGC STAGE PRESENTS: Pride of Dances-International Dance Extravaganza	
6:30		6:00pm DJ Plez		Playing with your food!			
6:45			Vassy				
7:00	August Infinity						
7:30		DJ John Murgas				Comedy Sportz Improvisational Comedy	
7:45			V.I.T.A.L. Emcee				
8:00				Film Screenings by Milwaukee LGBT Film Festival			
8:30	Pam Ann		Ariel Aparicio				
8:45		LALA					
9:00		DJ Dave Audé				Brody Hess	
9:15							
9:30	<b>FIREWORKS</b>	<b>FIREWORKS</b>	<b>FIREWORKS</b>	<b>FIREWORKS</b>	<b>FIREWORKS</b>	<b>FIREWORKS</b>	<b>FIREWORKS</b>
10:00	Headline Show: SALT-N-PEPA Hosts: Feast of Fun with Marc Felton & Fausto Fernos special guest performances by: Deven Green Chris Crocker RuPaul's Drag Race's Carmen Carrera and XELLE		Bitch				
10:30		RUPAUL'S DRAG RACE: Stacy Layne Matthews					
10:40		DJ Dave Audé					
MIDNIGHT	GROUNDS CLOSED	GROUNDS CLOSED	GROUNDS CLOSED	GROUNDS CLOSED	GROUNDS CLOSED	GROUNDS CLOSED	GROUNDS CLOSED

SPECIAL Exhibits / Events  
Fri/ Sat / Sun

ARTS AND CULTURE BUILDING

Urban Park Courts

Prints by Todd Rongstad  
The UWM Library LGBT Archive  
The Milwaukee LGBT History Project

2011 PrideFest Volleyball Tournament 12-4:30 round robin play



# **GRUBER LAW OFFICES, LLC**

## **Accidents? Injuries?**

## **"One Call... That's All!"**

## **414-276-6666**

## **www.gruber-law.com**



# Redefining Nightlife!



## MONDAYS

### SERVICE INDUSTRY NIGHT

- > LOCAL/NATIONAL GUEST DJs
- > ANY PREMIUM DRINK, SHOT OR BEER \$2 BEFORE 12AM, \$4 AFTER
- > \$80 EFFEN BOTTLES (ALL FLAVORS)
- > DOORS OPEN AT 10PM, NO COVER

## WEDNESDAYS

### COLLEGE AND LADIES NIGHT

- LADIES DRINK FREE WITH PASSWORD
- > \$1 SELECT SHOTS BEFORE 12AM, \$3 AFTER
- > GUEST DJs & CELEBRITY APPEARANCES
- > NO COVER WITH PASSWORD
- > DOORS OPEN AT 10PM

## FRIDAYS & SATURDAYS

### MILWAUKEE'S A-LIST WEEKEND WITH NATIONAL AND LOCAL GUEST DJs

- > HOT GO-GO DANCERS EVERY FRIDAY
- > VALET AVAILABLE
- > DOORS OPEN AT 9PM (F)
- > DOORS OPEN AT 10PM (S)

Bring this ad for no cover for you and your group before 12am Friday and Saturday!

# SUITE

SUITE, MILWAUKEE'S VEGAS STYLE NIGHTCLUB IS AVAILABLE FOR PRIVATE EVENTS. FOR MORE INFO EMAIL US AT [PARTY@SUITEMILWAUKEE.COM](mailto:PARTY@SUITEMILWAUKEE.COM)

1103 NORTH OLD WORLD 3RD ST - MILWAUKEE, WI  
414.270.9653 - [SUITEMILWAUKEE.COM](http://SUITEMILWAUKEE.COM)

## SUNDAY, JUNE 12 - 2 PM

[www.prideparademke.org](http://www.prideparademke.org)



Milwaukee Pride Parade

## VOLUNTEERS WANTED

APPLICATIONS FOR PARADE ENTRIES ARE AVAILABLE ONLINE

Awards Ceremony,  
Sunday - Rainbow Stage 5:30 pm

Join us on facebook



Avant Garde

800M

KRUZ

BOUND

QUEST





# PRIDEFEST 2011 SUNDAY STAGE LINEUP

**12:00p.m. MILLER LITE MAINSTAGE**

**Pulsation Band**

Chicago, IL Pop <http://www.pulsationband.com>



This talented group has racked up an impressive performance resume as well as a fiercely devoted fan base. From disco-funk from the 70's to the energetic beats of today's hip/hop, pop, and alternative, Pulsation delivers a memorable experience you won't soon forget.

**12:00p.m. PUMPI DANCE PAVILION**

**Milwaukee Men's Chorus Milwaukee, WI Choral**



Under the direction of Ken Fomey, this group of 20 men will melt your heart with their harmonies. Singing songs from Gay Anthems to Tebop, with a show tune thrown in "just because", they will certainly set your toes tapping and your fingers snapping.

**12:00p.m. Arts and Culture**

**Prints by Todd Rongstad**

**A Collection of Vintage Images**

**presented by: Milwaukee Gay Arts Center**

On display all weekend, Todd Rongstad's poster-like prints present a look at LGBT consciousness and same-sex bonding of those early pre-Stonewall days. Rongstad has collected vintage images that contain more than a hint of LGBT relationships. In their innocence these old photographic documents belie an era in which overt expressions of LGBT behavior were rarely articulated. Rongstad enhances the original captured moment with texts to memorialize the individual images.

**12:00p.m. Health and Wellness Area**

**Open Play Volleyball**

Open play is from noon until 2:30pm

**12:00 Urban Park Courts**

**PrideFest**

**Volleyball**

**Tournament**

**Competition**

From 12noon to 2:30p.m watch as teams battle it out at the tournament semi finals



**12:00p.m. Health and Wellness Area**  
**HIV testing hours at BESTD's Big Tent of Testing**  
**Sunday Noon-8pm**

**12:00p.m. Arts and Culture Building**

**The Milwaukee LGBT History Project**

On display all weekend, The History Project's exhibit has been a popular attraction at each Pride-Fest since 2003. The exhibits represent the development of the LGBT community over the past decades both before and after Stonewall. The collection of photos, documents and ephemera not only documents the LGBT community, but also serves as a source of information for the non-LGBT community to better understand our contributions to the community as a whole and our specific history. The 2011 LGBT History Project exhibit features an interactive time-line of significant moments in our community's history. Also screenings of "Stonewall Uprising" documentary take place all weekend.

**12:00p.m.**

**RAINBOW STAGE**

**Chris Bargmann**

**Saint Paul, MN**

**Acoustic/Singer-**

**Songwriter/Folk**

Chris takes risks with her

songwriting and stretches

her limits all-ways. Her

performances take you

through the whole range of emotions.

[www.broomhildamusic.com](http://www.broomhildamusic.com)



**12:00p.m. Children's Amphitheater**

**Able the Dancing Dog**

Able and Obey do a few dance numbers and trick routines, of course. But it isn't all eye candy! Able shares the secret of "ow to Be a Dog's Best Friend"

[www.dogclass.com/able-the-dancing-dog.html](http://www.dogclass.com/able-the-dancing-dog.html)



**12:00p.m. Arts and Culture Building**

**The UWM Library LGBT Archive**

presented by Milwaukee Gay Arts Center  
On display all weekend, The LGBT collections in the Archives Department provide a unique perspective on the emergence of a gay and lesbian movement in Milwaukee since the late 1960s. Topical strengths of its collections include the gay liberation movement, gays and lesbians in the military, HIV/AIDS, and marriage equality. The UWM Library LGBT Archive display gives insight into this rare and important collection.

**12:15 Health and Wellness Stage**

**Pilates**

**12:30p.m. Children's**

**Amphitheater**

**Mother Goose is**

**On the Loose!**

Mother Goose will playfully entertain your younger children with traditional rhymes and songs

[www.kathleenmohr.com](http://www.kathleenmohr.com)



**1:00p.m. PUMPI DANCE PAVILION**

**Honey LaBronx**

**New York, NY**

**Drag Comedy**

**Honey LaBronx**

is drag queen

and an activist in

New York City.

Also a militant

Vegan and animal

rights activist, Honey

is a passionate advocate

for the animals through

outreach and a Vegan

Drag Queen cooking

show she is developing

for the internet (to be

released in late 2011.)

<http://www.honeylabronx.com>



**1:00pm STONEWALL STAGE**

**Guest speaker Sandy Pasch**

sponsored by

Equality Wisconsin

Sandy Pasch speaks

about her history in the

Assembly and her

current run for the 8th

Senate District in the

recall election against

Alberta Darling.





# HAPPY PRIDE MILWAUKEE!

**FRIDAY 6/10/2011**

Pride Kick Off Party in LaCage! 10pm

Kick Off Show in Montage Show Lounge! 11pm

Wisconsin's Premier Show Bar has a Special Pride Show  
W/the Cast of "Transformation"!

No Cover in ETC 6-CL & Montage 12:30am - CL

**SATURDAY 6/11/2011**

The Best Pride Dance Party starts at 10pm

You won't want to miss the Saturday night Show at 11pm

It's a "Vanity Affair"!

No Cover in ETC 6-CL & Montage 12:30am - CL

**SUNDAY 6/12/2011**

**Join us for the Parade & the Best Pride After Party! FRONT ROW SEATS OUTSIDE!**

Enjoy Specialty Bloody Mary's made with Infused EFFEN Vodka You won't believe the Flavor!

**Come for the EFFEN Bloody Mary's & the Parade - Stay for the After Party!**

*LaCage is open 12 noon to 2am ---No Cover Charge---*



## LaCAGE NITECLUB

Milwaukee's Premier Gay Nightclub

## MONTAGE LOUNGE

## ETC

Milwaukee's Cosmopolitan Video Bar  
Come relax with us!

### PRIDE WEEKEND HOURS

Etc open daily at 6

LaCage Fri & Sat 10pm, Sun at Noon

Montage Fri & Sat 10pm

Check us out on **facebook**

LaCage Entertainment Complex... Wisconsin's Multi-Level LGBT Complex & Premier Gay Nightclub!  
3 full service levels featuring 6 Great Bars, 2 Dance Floors, and the BEST dance music in town!

801 South Second Street 414-383-8330 [www.lacagemke.com](http://www.lacagemke.com)



# SUNDAY MILLER LITE MAINSTAGE HEADLINE SHOW

## 7:00p.m. LeAnn Rimes

LeAnn Rimes white background  
[www.leannrimesworld.com](http://www.leannrimesworld.com)  
 LeAnn Rimes has sold more than 37 million albums, won two Grammy Awards, three Academy of Country Music Awards and 12 Billboard Music Awards. This June 10, Rimes will also become the first major country music act to headline PrideFest Milwaukee. Having been the youngest recipient of a Grammy Award, Rimes also was the first country recording artist to win in the "Best New Artist" category. She has placed 42 singles on the Billboard Hot Country Songs chart, 13 of which are top-10 hits, and has scored numerous hit singles in her career, including "Can't Fight the Moonlight" which went #1 in 11 countries, and "How Do I Live," which is the second longest charting song ever on the Billboard Hot 100 chart.



## with Special Guest Chely Wright

Chely Wright made her name as a commercial country singer, and was named Top New Female Vocalist in 1995 by the Academy of Country Music. She has recorded songs from some of Nashville's top writers, including modern-day classic "Single White Female," as well as the number one hit single, "Shut Up and Drive" and "Jezebel". Overall, Wright has released seven studio albums, charted more than fifteen singles, and has seen her previous eight albums sell over



1,000,000 copies in the United States. In May 2010, Wright became the first major country music performer to publicly come out as a lesbian, citing concerns with bullying and hate crimes towards those in the Lesbian, Gay, Bi-Sexual, Transgender community.

## Show Hosted by Pandora Boxx

Rochester, NY Drag Queen / Comedienne  
[www.pandoraboxx.com](http://www.pandoraboxx.com)



Named by Entertainment Weekly "as their America's Next Drag Superstar," Pandora most recently appeared as a contestant on the smash hit *RuPaul's Drag Race* (Season 2) on the LGBT network Logo. The show garnered the highest ratings ever for the cable network. Despite not winning, Pandora proved to be the breakout star, and will now be featured in *RuPaul's Drag U* Season 2 coming June 2011 to Logo.



## 6:00p.m. - Midnight 2001 PUMP! Dance Pavilion

Design, lighting and effects by IG Designs  
 Laser show by Laseronics. Video content by VJ Brye

## 6:00p.m. DJ Daniel Borrero Chicago, IL



Working in different types of venues since early in his career has given Daniel an eye for watching a floor while captivating his audience with

his own brand of sound. His ability to seamlessly combine different genres of music has always been what truly sets him apart from other DJ's.

[www.Facebook.com/danielborrero](http://www.Facebook.com/danielborrero)

## 8:00p.m. DJ Chris Cox



[www.chriscoxonline.com](http://www.chriscoxonline.com)

Record producer, remixer, DJ, mix engineer, and multi-instrumentalist - Chris is one of the most talented and successful dance music artists in the United States. With a regular rotation of sold-out international DJ performances and studio productions that yield nothing but chart-topping hits, Chris Cox is a symbol of the superstar power in dance music today.

## 9:30p.m. SK8

New York, NY Dance

[www.facebook.com/sk8music](http://www.facebook.com/sk8music)

Sk8 has co-written and recorded her own tunes with musical talents such as Todd Terry, Chris Cox, Pete Tong, Carl Ryden of Shapeshifters and Trent Cantrelle.



## 9:45p.m. DJ Chris Cox

[www.chriscoxonline.com](http://www.chriscoxonline.com)



## 10:20p.m. RuPaul's Drag Race: Carmen Carrera

## 10:30p.m. Wynter Gordon

New York, NY Dance  
[www.wyntergordon.com](http://www.wyntergordon.com)



With an ethereal voice and playful personality, singer/songwriter Wynter Gordon is giving dance floor divas and music heads alike a new reason to Believe.

## 11:00p.m. DJ Chris Cox

[www.chriscoxonline.com](http://www.chriscoxonline.com)



**GRUBER LAW OFFICES, LLC**  
 "One call...that's all"  
 414-276-6666





We show our pride all year long!

# QUEST

Wisconsin's LGBT News & Entertainment Magazine



**Quest uses profits from our advertising sales to promote non-profit events happening in your community.**  
**Quest - produced by our LGBT Community for our community.**



# SUNDAY JUNE 12 NOON - MIDNIGHT STAGE LINEUP

	Miller Lite Mainstage	PUMP! Dance Pavilion	Rainbow	Stonewall	Health & Wellness	Children & Family / MAGC after 6 pm	Youth
	MILLER LITE MAINSTAGE	PUMP! DANCE PAVILION	RAINBOW	STONEWALL	HEALTH & WELLNESS	CHILDREN & FAMILY / MAGC STAGE	YOUTH
TIME							
12:00	Pulsation Band	Milwaukee Men's Chorus	Chris Baromann		Open Play Volleyball All Day	Able the Dancing Dog	
12:00					HIV testing 12-8		
12:15					BESTD's Big Tent of testing		
12:30					Prates		
1:00		Honey LaBronx		Guest speaker Sandy Pasch		Mother Goose is On the Loose!	
1:15			Martine Locke		Breast Health Demonstration		
2:00	Far From Falling	Furlesque		How to be a Drag King		Jason Jollum's Variety Show	
2:15					Women's Voices		
2:30			Steve Reeder		Volleyball Tournament Finals		
3:15	SONIA & disappear fear	Windy City Beauties			Cream City Squares		
3:30			Rachael Sage				
3:45							
4:00				Q-Blok - Almost 2 Years in	2011 PrideFest Volleyball Tournament Awards Presentation	Figureheads	
4:15					Tamarind Tribal Belly Dance		
4:45	Ronnie Nyles & Tallulah Who		The Heat Birds				
5:00		Andrew Christian Underwear Show	Milwaukee Pride Parade Awards				
5:15					Zumba Demonstration		
5:30				Celebration of Our Relationships			Speedy 70
5:45							
6:00		PUMP! design lighting & effects by IG Designs, laser show by Lasersonics, Video Content by VJ Rye	Mr. Pride Latino & Miss Pride Latina			A Pride of Dancers - International Dance Extravaganza	
6:30		6:00pm DJ Daniel Borrero					
6:45							
7:00	Headline Show: LeAnn Rimes w/Special guest Chely Wright		Purple Tongue				
7:30	Headline Show hosted by Pandora Boxx					The Vagina Monologues by Eve Ensler	
7:45							
8:00		DJ Chris Cox	Shelina	Film Screenings by Milwaukee LGBT Film Festival			
8:30							
8:45							
9:00			Brew City Bombshells Burlesque				
9:15							
9:30		SK8					
9:45		DJ Chris Cox					
10:00	CLOSED						
		RuPaul's Drag Race: Carmen Carrera					
10:30		Wynter Gordon					
11:00		DJ Chris Cox					
MIDNIGHT	GROUNDS CLOSED	GROUNDS CLOSED	GROUNDS CLOSED	GROUNDS CLOSED	GROUNDS CLOSED	GROUNDS CLOSED	GROUNDS CLOSED

SPECIAL Exhibits / Events  
Fri/ Sat /Sun

ARTS AND CULTURE BUILDING

Prints by Todd Rongstad  
The UWM Library LGBT Archive  
The Milwaukee LGBT History Project

Urban Park Courts

2011 PrideFest Volleyball Tournament 12-4:30 round robin play



Schedules are subject to change. For up to date information, and entertainment schedules, visit

**www.pridefest.com**

On your smartphone, go to [PrideFest.com/webapp](http://PrideFest.com/webapp) or scan the code above.





**1:15pm RAINBOW STAGE****Martine Locke**

Perth, Australia Acoustic Rock

<http://www.martinelocke.com>

With her 8th independent release under her belt, Martine Locke is the epitome of a passionate independent artist. She writes the songs, books the tours, produces the cds, designs the merchandise, drives the van, plays the gigs, tells the stories, meets the people and then starts it all over again the next day.

**1:15p.m. Health and Wellness Stage****Breast Health Demonstration****2:00p.m. MILLER LITE MAINSTAGE****Far From Falling**

Minneapolis, MN Melodic Hard Rock

[www.farfromfalling.com](http://www.farfromfalling.com)

Minneapolis based Far From Falling is on the path where more is just not enough. Fronted by local superstar Harley Wood, FFF has garnered rave reviews for both their recorded material and their intensely passionate live performances.

**2:00p.m. PUMPI DANCE****PAVILION****FurLesque**

Chicago, IL Burlesque

FurLesque is the male burlesque show featuring the men your mother warned you about. Bears, cubs, otters, wolves and every other woodland creature you can think of will be standing up and stripping down.

[facebook.com/pages/FurLesque/120171991393543](http://facebook.com/pages/FurLesque/120171991393543)**2:00pm STONEWALL STAGE****How to be a Drag King**

Ever curious how the Drag Kings get in gear to do a show? Milwaukee's own Miltown Kings will instruct us on how to assemble a drag persona!

**2:00p.m. Children's Amphitheater****Jason Jollum's Variety Show****Juggling/Variety**

Kids and family entertainer Jason Jollum will perform a blend of high-energy wacky and interactive entertainment.

**2:15p.m. Health & Wellness Stage****Women's Voices**

Come hear these lovely ladies as they grace the shores of Lake Michigan in beautiful harmony

**2:30pm RAINBOW STAGE****Steve Reeder**

Kenosha, WI Rock

Steve Reeder is taking his brand of high energy rock and roll out to the world.

<http://www.stevereder.com>**2:30p.m. Health and Wellness Courts****Volleyball Tournament Finals**

Cheer on your favorite teams all the way to victory!



## Samara

### Garden & Home LLC

Come explore...

Milwaukee's premier selection of unique treasures from the past, present and future for your garden and home. Urban dwellers, as well as transitional traditional and contemporary people will find a solution for their decorating needs.

Garden Art - Accessories  
Furnishings - Garden - Home  
Art Work  
Vintage Lighting  
Home Accents / Accessories  
Jewelry - Old & New  
Vintage Clothes




Unique Items for all Occasions.

**Hours**  
Wed - Fri 11-5  
Sat 10-5  
Sun 12-4 (Thru June)  
&  
by Chance or Appt.

**Located**  
5211 W North Avenue  
Milwaukee, WI 53211  
414-444-8100  
[www.samaragardenandhome.com](http://www.samaragardenandhome.com)

SATURDAY • JOANNES PARK • GREEN BAY  
**JULY 9th 2011**  
Pride Alive

COMMUNITY • DIVERSITY • EQUALITY  
**11AM - 10PM • FREE EVENT**

Enjoy a full day of entertainment including  
 DJ Cody Domino, Unity, Ronnie Nyles and more!  
 Thank you for your support - please no carry-ins.

[www.newpride.org](http://www.newpride.org)

Quest Magazine • Starbucks • Triangle Distributing  
 TC Dance Club • Positive Voice • Kimberly-Clark  
 Hilton Garden Inn



**3:15p.m. MILLER LITE MAINSTAGE**

**SONIA & disappear fear**  
Baltimore, MD Alternative Folk  
<http://www.disappearfear.com>



SONIA & disappear fear have sold over half a million CD with non-stop world tours. SONIA's music, from her roots in Baltimore to the deserts of the Middle East, like her philosophies leaps across borders.

**3:15p.m. Health and Wellness Stage**  
**Cream City Squares**

**3:30pm RAINBOW STAGE**  
**Rachael Sage** New York, NY Art-Pop  
[www.rachelsage.com](http://www.rachelsage.com)



**4:00p.m. Children's Amphitheater**  
**Figureheads**  
Milwaukee, WI Hip Hop  
[www.figureheadsinc.org](http://www.figureheadsinc.org)



Come check out Parent's Choice Gold Award and WAMI winning hip hop group. A high energy, interactive and inspirational concert experience.

**3:15p.m. PUMP! DANCE PAVILION**



**4:00p.m. STONEWALL STAGE**

**Q-Blok – Almost 2 Years in**

Q-Blok focuses on the housing needs of LGBT-identified young people ages 18-25 who are entering adulthood ill-equipped to achieve successful independence and self-sufficiency due to their histories of running away, homelessness, and family rejection. By addressing the need for family support and guidance Q-Blok actively recruits and engages LGBT-identified adult community members willing to "sponsor" a young person and provide these youth a positive, affirming, and healthy "family" able to offer support, encouragement, and guidance as they work to achieve identified milestones necessary for becoming successful young adults.

**4:00p.m. Health and Wellness Stage**  
**2011 PrideFest Volleyball Tournament Awards Presentation**

Awards given to the top teams at this years tournament.

**4:15p.m. Health and Wellness Stage**  
**Tamarind Tribal Belly Dance**

**4:45pm MILLER LITE MAINSTAGE**  
**Ronnie Nyles & Tallulah Who**  
Milwaukee, WI Rock/Alternative/Pop  
<http://www.ronnienylen.com>

# GRAB MAGAZINE

**CHICAGO'S BIWEEKLY LGBT PUBLICATION**

**PROUD SPONSOR OF THIS YEAR'S PRIDEFEST**  
**STOP BY OUR BOOTH AND SAY HI . . . ALSO FIND US**  
**ON THE WEB AT [www.GRABCHICAGO.COM](http://www.GRABCHICAGO.COM)**



# Happy Pridefest! Celebrate at the **PUMP!** Dance Pavilion

Celebrate With **PUMP!** Each & Every Month

**Superb Music—Delicious Cocktails!**

DJ John Murges at Mary's Attic Chicago

Every 2nd, 4th, & 5th Saturday

Mary's Attic @ Hamburger Mary's

9:00PM | No Cover | 21+ with ID

100 North Clark Street, Chicago 773.784.6969

**You Had Me at WOOF!**

DJ John Murges at Woof's Madison

Every 3rd Saturday.

Woof's Madison

9:00PM | No Cover | 21+ with ID

114 King Street, Madison 608.204.6222

mary's  
**attic**

**WOOF'S**



facebook.com/  
pump.milw

**THERAPY** is coming to a NEW venue soon!

photo by Mike Hillier

**ig**  
DESIGNS  
lighting Video Graphics

proud sponsors  
& designers of the  
**PUMP DANCE PAVILION**

**special  
EVENTS**

**corporate  
EVENTS**

**private  
EVENTS**

**Kirk Kohlbeck**  
414-937-0668  
kirk@igdesigns.net  
www.igdesigns.net



#### 4:45pm RAINBOW STAGE

##### The Heat Birds

Chicago, IL Folk [www.facebook.com/heatbirds](http://www.facebook.com/heatbirds)



Heat Birds is an acoustic ensemble with an eclectic mix of vocal and musical styles. With instrumentation that is a hallmark of true Chicago Americana outfits, the Heat Birds incorporate clarinet, trombone, mandolin, ukulele, accordion, guitar, percussion and upright bass into their performances.

#### 5:00pm PUMP! DANCE PAVILION

##### Andrew Christian Underwear Show

#### 5:30pm RAINBOW STAGE

##### Milwaukee Pride Parade Awards

The 2011 Milwaukee Pride Parade Awards Ceremony is a celebration of some of the best units which entered the parade earlier today. The parade takes place on south 2nd Street with a stop off occurring at 2PM sharp.

#### 5:30p.m. STONEWALL STAGE

##### Celebration of Our Relationships

Recognize your relationship at the festival's beautiful lakefront location. Clergy will lead a beautiful service of celebration and blessing.

#### 5:30pm Youth Village

##### Speedy 70

Join Project Q youth development program of the Milwaukee LGBT Community Center, in a competition for the team of youth who is the fastest, most agile, skilled and can endure the longest in our series of 70 second challenges.

#### 6:00p. RAINBOW STAGE

##### Mr. Pride Latino & Miss Pride Latina



A pageant for people of Hispanic background. Mr. and Miss Pride Latino will have the responsibility of representing the Latino community and the HIV Department from Sixteenth Street Community Health Center.

#### 6:00p.m. Milwaukee Gay Arts Center Stage

##### A Pride of Dancers - International Dance Extravaganza

#### 7:00p.m. RAINBOW STAGE

##### Purple Tongue

Milwaukee, WI Latin Alternative Rock  
A Latin Alternative Rock trio with a penchant for poly-rhythmic. Formed recently by locals Carlos Garcia, Jesus Nanez and Jair Sanchez, Purple Tongue pulls their influences from the angular and bass-driven music of early sounds of The Cure to the driving power of Swervedriver and modern bands such as Interpol, weaving dance-y percussion into their songs for added momentum.

<http://www.myspace.com/purpletongue>

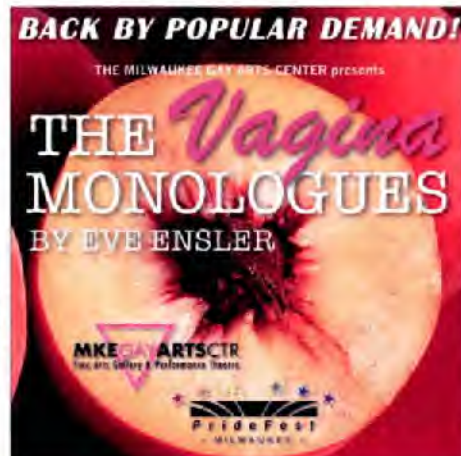
<http://www.facebook.com/purpletongue>



#### 7:30p.m. Milwaukee Gay Arts Center Stage

##### The Vagina Monologues by Eve Ensler

(Presented through special arrangement with Dramatists Play Service.)



An Obie Award-winning play, providing a poignant and hilarious tour of the ultimate forbidden zone, The Vagina Monologues is a celebration of female sexuality in all its complexity and mystery. The Milwaukee Gay Arts Center is proud to present this production featuring an entirely local cast, originally staged in conjunction with the 2011 V-Day Campaign to end violence toward women and girls around the world. Directed by Casey Harding.

#### 8:00p.m. STONEWALL STAGE

##### Milwaukee LGBT Film Festival

Screenings of various films takes place all weekend beginning at 8:00p.m.

#### 8:00p.m. RAINBOW STAGE

##### Shelina

Miami, FL  
Tropical Dance / Latin House

Shelina is an energetic lighting bolt of talent. She performs in English & Spanish and her show includes all her current hits as well as her trademark Celia Cruz Tribute. Shelina came to the U.S. in 1998 from the Dominican Republic where she was a professional Singer.

[www.shelinaonline.com](http://www.shelinaonline.com)



#### 9:00p.m. RAINBOW STAGE

##### Brew City Bombshells Burlesque

Milwaukee, WI Neo-Burlesque

## Brew City BOMBHELLS \* BURLESQUE \*

The Brew City Bombshells Burlesque is Milwaukee's local troupe of sassy and classy tassels twirlin' ladies. Established in May of 2009, the Bombshells feature award-winning dancers, comedy acts, belly dancers, and a variety of other performers.



Special guest throughout the weekend, Miss Foozie!



# Thank you to our Media Sponsors!

**QUEST OUTBOUND**

**GO PRIDE .COM**

**CHICAGO PRIDE.COM**

**Jammin' 98.3**  
KNOX'S HARBOR ONE DUNDY

**our lives**  
**OL**  
ourlivesmadison.com

**BIG BUCK COUNTRY 106.9**

**FM 106.1**  
Continuous Country Favorites!

**FOX 47**  
WMSN • MADISON

**FUSION**  
RADIO CHICAGO.COM  
DANCE INTERNET RADIO

Quest  
Outbound  
GoPride.com  
Chicagopride.com  
Jammin 98.3  
Big Buck Country 106.9  
FM 106  
Windy City Media  
Grab Magazine  
Compete Sports Media  
The Onion  
Feast of Fun  
Our Lives  
Isthmus  
Fox TV in Madison  
Shepherd Express  
Fusion  
Third Coast Digest  
Manhunt  
Yelp

**WINDY CITY MEDIA GROUP**

**FEAST OF FUN**  
Listen to iTunes #1  
GLBT Talk Show

**GRAB**

**COMPETE SPORTS MEDIA**  
We Are Gay Sports

**yelp**

**the ONION**  
America's Finest News Source

**ISTHMUS**

**Shepherd EXPRESS**

**MANHUNT**

**TCD**  
THIRDCOAST DIGEST

**We Celebrate You.**

[ourlivesmadison.com](http://ourlivesmadison.com)  
[facebook.com/ourlivesmagazine](https://facebook.com/ourlivesmagazine)  
[ourlivesmagazine](http://ourlivesmagazine)

**our lives**  
**OL**  
Madison LGBT & L Magazine

**Inside:**  
Celebrating Lesbian & Gay in Madison  
Madison's Most Active & Vibrant Community  
What to Expect: Gay & Lesbian  
Madison's Most Active & Vibrant Community  
Is Your Happiness Just a Click Away?  
Travel: International Travel - Amsterdam

**food dining**  
THE OLD FASHIONED WAY

**our lives**  
**OL**  
Madison LGBT & L Magazine

**Plus:**  
260 Couples Start Up For Love  
How Many Couples Start Up For Love?  
Dining Out On Williamson Street  
Gay, Lesbian & Bisexual  
Bisexual: Your Relationship  
Bisexual: Your Relationship

**Creating Wonderland**  
arts & culture

**We Buy & Sell:**  
Tables • Hutches • Dressers & More!

**USED FURNITURE**

**Marcia's**  
Second Time Around, Inc.

**5928 S. 27th St. Milwaukee**  
**414-282-4316**

Mon - Fri: 10-6, Sat: 10-5, Sun 12-5  
[www.marciasusedfurniture.com](http://www.marciasusedfurniture.com)



SATURDAY

**JUNE 11**

11 PM - 2 AM

**BOOM**

**MANHUNT**

**TAKES OVER MILWAUKEE**

WITH PERFORMER OF THE YEAR

**SPENCER REED**

Model/Photo courtesy of

**DOMINICFORD**

**FABSCOUT**  
ENTERTAINMENT

**BOOM 625 S. 2ND STREET MILWAUKEE**



**SWISS NAVY® wishes**  
**EQUALITY**  
**FOR ALL**

Now Available  
in Adult Stores  
Near You!



**SWISS NAVY®**

**Introduces our very newest Product –  
All Natural Water Based Premium Lube**

**“Finally, a water based Lube that feels like Silicone.”**

- Glycerin Free, Paraben Free, and Sugar Free
- Leak-proof bottle with locking pump • Made with Carrageenan

Manufactured by MD Science Lab, LLC • [mdsciencelab.com](http://mdsciencelab.com)



# COMMUNITY RESOURCE GUIDE

## LGBT Service and Advocacy Organizations

**Connexus** 12408 E. Brady St., Milwaukee, WI 53202

**Cream City Foundation**  
758 N. Milwaukee, Suite 212  
Milwaukee, WI 53202  
(414) 225-0244  
director@creamcityfoundation.org

**Diverse And Resilient**  
2439 N. Holton St. Milw.  
WI 53212 (414) 390-0444  
director@diverseandresilient.org  
www.diverseandresilient.org

**Fair Wisconsin** 122 State St., Suite 309 Madison, WI 53703 (608) 441-0143  
www.fairwisconsin.org

**FORGE** PO Box 1272 Milw.  
WI 53201 (414) 558-2123  
info@forge-forward.org  
www.forge-forward.org

**G/L Community Trust Fund**  
PO Box 1686, Milw., WI 53201 (414) 643-1652  
glcenter@gl.com  
glcommunitytrustfund.com

**Galan Club**  
315 W. Court St.  
Milwaukee, 53212  
(414) 276-8938  
mail@galanclub.org  
www.galanclub.org

**Gay / Bi Fathers Support Group** c/o Outreach, 600 Williamson Madison 53703  
Serving Dane, Rock, Jefferson Counties  
For location & dates  
e-mail tooldforthis@tds.net

**Gay Narcotics Anonymous**  
Meets Fridays @ 7 p.m.  
252 E. Highland Ave. Milw.  
53202 (414) 276-6936

**Gay Youth Milwaukee**  
PO Box 090441 Milwaukee, WI 53209 (414) 265-8500

**Gemini Gender Group**  
PO Box 44211 Milwaukee, WI 53214 (414) 297-9328

**Lesbian Alliance**  
252 E. Highland Ave. Milw.  
53202 (414) 272-9442  
lamm@milwpc.com

**LBGT Center of SE WI**  
1456 Junction Ave., Racine, WI 53403 (262) 664-4100  
info@gbtsewisc.org

**LGBT Resource Center for the 7 Rivers Region**  
303 Pearl Street, PO Box 3313  
La Crosse, WI 54602-3313  
608-784-0452  
www.7riverslgbt.org

**Log Cabin Republicans**  
PO Box 189, Milw., WI 53201  
(414) 755-1954  
membership@lcrwi.com

**Milw LGBT Community Center**  
252 E. Highland Ave. Milw.  
53202 (414) 271-2656  
www.milwlgbt.org

**Pathfinders**  
1614 E. Kane Pl. Milwaukee, WI 53202 (414) 271-1560  
info@lccmilw.org  
www.lccmilw.org

**PFLAG Milwaukee**  
252 E. Highland Ave. Milw.  
53202 (414) 288-9198  
pflagmilwaukee@hotmail.com

**PFLAG Racine/Kenosha**  
PO Box 580058 Pleasant Prairie, WI 53158 (262) 694-2729  
pflagkenosha@aol.com

**Positive Direction Milwaukee**  
(414) 461-5894

**Positive Voice**  
PO Box 1381 Green Bay, WI 54305-1381 (920) 435-4404  
info@pvinc.org  
www.pvnc.org

**Project Q**  
252 E. Highland Ave. Milw.  
53202 (414) 223-2320  
kurt@projectq.org  
www.projectq.org

**Queer Program**  
PO Box 090441 Milwaukee, WI 53209 (414) 265-8500  
queerprgm@aol.com

**Queer Zine Archive Project**  
2935 N. Frattley St.  
Milwaukee, WI 53202  
qzap@qzap.org  
www.qzap.org

**Rainbow Over Wisconsin**  
702 E. Wisconsin Ave.  
Appleton, WI 54911  
rainbowoverwisconsin.org

**SAGE Milwaukee** 1845 N. Farwell - Ste. 220 Milwaukee, WI 53202 (414) 224-0517  
email@sagemilwaukee.org

**Transgender Aging Network**  
6990 N. Roadledge Ave. Glendale, WI 53208 (414) 540-6456  
lorced@adl.com

**UWM LGBT Resource Center**  
UWM Union WG89 PO Box 413 Milwaukee, WI 53201 (414) 229-4115  
jrmurray@uwm.edu  
uwm.edu/Dept/OSLGBT

**Wisconsin Rainbow Alliance of the Deaf**  
252 E. Highland Ave. Milw.  
53202 www.wisrad.org

**Art, Sports Entertainment**  
**Cream City Chorus**  
252 E. Highland Ave. Milw.  
53202 (414) 276-3787  
www.creamcitychorus.org

**Cream City Squares**  
(414) 445-8080  
djdilges@execpc.com  
www.legsdcc.org/creamcity

**Front Runners** (414) 443-0379  
ullwolf.com/frontrunnersmike/welcome.html

**GAMMA - Milwaukee**  
PO Box 1900, Milw., WI 53201 (414) 530-1886  
gamma@milwaukeeegamma.com  
www.milwaukeeegamma.com

**Holiday Invitational Tournament**  
PO Box 899, Milw., WI 53201 (414) 881-8071  
director@hitmilwaukee.org  
www.hitmilwaukee.org

**Harmony Cafe Appleton**  
233 E. College Ave., Appleton (920) 734-2233

**Harmony Cafe Green Bay**  
1660 W. Mason (920) 569-1593  
www.harmonycfe.org

**Madison Gay Hockey**  
www.madisongayhockey.org

**Men's Voices Milwaukee**  
c/o U.C.C. 2717 E. Hampshire  
Milw. 53211 (414) 861-5526  
www.mvmchorus.org

**Milwaukee Kings**  
myspace.com/milwaukeekings

**Metro Milwaukee Tennis Club** 3657 No. 81st St. Milw., WI 53222 (414) 616-3716  
Moehell@msn.com  
www.milwaukeeestennis.com

**Milwaukee Gay Arts Center**  
703 So. 2nd St. Milw., WI 53204 (414) 383-3727  
milwgaac@yahoo.com  
milwaukeegayartscenter.org

**Milw Gay Volleyball Assoc.**  
www.milwaukeegayvolleyball.com  
director@milwaukeegayvolleyball.com

**Milwaukee Pride Parade**  
PO Box 0091 Milwaukee, WI 53201 (414) 607-3793  
www.prideparademilw.org

**PrideFest** (414) 272-3378  
PO Box 511763, Milw., 53203 www.pridefest.com

**Saturday Softball League**  
2333 N. 58th St., Milw. 53210 (414) 350-7147  
www.ssbilwaukee.com

**Shoreline Country Dancers**  
2809 E. Oklahoma Milw. 53207  
info@shoreline-milw.org  
www.shoreline-milw.org

**Theatrical Tendencies**  
6650 W. State St. #120  
Wauwatosa, WI 53213  
414-755-2700

**Women's Voices Milwaukee**  
5505 W. Lloyd St. Milwaukee (630) 890-5584  
womensvoicesmilwaukee@gmail.com

**LGBT Social Groups**  
**Argonauts of Wisconsin**  
Box 22056, Green Bay, WI 54305  
argonauts@sbglobal.net  
www.argonauts.wi.com

**Bear Club 4 Men**  
Box 13463, Green Bay, WI 54307  
www.bearclub4men.com  
bearclub4men@gmail.com

**Black & White Men Together**  
PO Box 80395, Milw. 53208 (414) 461-5359  
bwm@milwaukee@aol.com  
www.bwm@milwaukee.org

**Brew City Bears**  
PO Box 1035, Milw., WI 53201 (414) 331-3744  
bcb4men@sbglobal.net  
www.bcb4men.info

**Brew City Soul Brothers**  
Brewcitybrothers@yahoo.com

**The Brunch Club**  
jenmiers@glad.net

**Castaways**  
PO 1697 Milwaukee 53202

**Dodge Co. LGBT Social Group of Wisconsin**  
420 S. Hubbard Street, Horizon  
WI 53032 (920) 319-1090  
mellow14u@care2.com  
care2.com/c2c/group/dogblsgow

**Femme Mafia Milwaukee**  
myspace.com/femmefamiamke

**GAMMA - Milwaukee**  
PO Box 1900, Milw., WI 53201 (414) 530-1886  
gamma@milwaukeeegamma.com  
www.milwaukeeegamma.com

**Great Lakes Harley Riders**  
PO Box 541611 Milw. 53234  
bootedhog@aol.com

**Men (MenEnjoyNudism)**  
Box 0631, Milwaukee 53207

**N.E.W. Brotherhood**  
Box 12793, Green Bay, WI 54307  
www.NEWBrotherhood.org

**Rainbow Families c/o PFLAG**  
252 E. Highland Ave. Milw.  
53202  
mkerainbowfamilies@hotmail.com

## LGBT Welcoming Churches

**Angels of Hope MCC**  
3607 Liberal St., Green Bay, WI (920) 863-7453  
Appleton at UCC Chapel,  
724 E. South River Dr.  
aohmcc@netnet.net  
www.angelsofhope.mcc.org

**Church of Altheism**  
206 Vine St., Eau Claire, WI 54703 (706) 583-2586  
church\_of\_altheism@yahoo.com  
freebooks@churchofaltheism.com

**First Unitarian Society of Milwaukee** 1342 N. Astor, Milw., 53202 (414) 273-5257  
office@uwmilwaukee.org  
www.uwmilwaukee.org

**Footstep Fellowship First Presbyterian Church Chapel** (715) 355-8641 PO Box 171, Wausau, WI 54402  
footstepfellowship@yahoo.com  
geocities.com/footstepfellowship

**Fox Valley UU Fellowship**  
2600 E. Phillip Lane Appleton WI 54915 (920) 731-0849  
www.fvuu.org

**Lake Park Lutheran Church**  
2647 N. Stowell St. Milwaukee, WI 53211 (414) 962-9190  
office@lakeparklutheran.com  
www.lakeparklutheran.com

**Milwaukee Metropolitan Community Church** PO Box 2421 1239 W. Mineral St. Milw. WI 53204 (414) 383-1100  
info@queerchur.h.org  
pastor@milwcc.org  
www.queerchurch.org

**Plymouth Church** 2717 E. Hampshire Ave. Milwaukee, 53211 (414) 964-1513  
plymouthchurch@choicenet.com  
www.plymouth-church.org

**Preble Park Presbyterian Church** 607 Ravenswood Dr. Green Bay, WI 54302 (920) 468-7125

**SS Cyril & Methodius United Independent Catholic Church** Neenah 54956 (920) 750-4465  
stoytlandmethodius@centurytel.net  
www.uicchurch.homestead.com

**UAC-Christ Enlight Gatherings** 3195 S. Superior Street Milwaukee, WI 53207  
www.uacmilwaukee.org  
RevJ@MilwaukeeMinistry.org (414) 793-4828

**Underwood Baptist** 1916 N. Wauwatosa Ave. Wauwatosa, WI 53213 (414) 258-4246  
office@underwoodchurch.com  
www.underwoodchurch.com

**Union Congregational UCC** 716 So. Madison St., Green Bay 54303 (920) 437-9266  
Fax (930) 437-3765  
unionucc@gbonline.com

**Unity Church of Kenosha**, Racine 9220 26th Ave., Kenosha, WI 53143 Rev. Don (262) 914-8369  
hellodjd@sbglobal.net

## Neighborhood Associations

**Bay View GAYS**  
(414) 482-3796  
bvgpresident@bvgays.com  
www.bvgays.com

**Washington Heights Rainbow Association**  
(414) 258-8834  
washhtrsrainbow@aol.com  
washingtonheightsrainbow.org

**Wauwatosa Rainbow Association**  
tosarainbow@yahoo.com

## Other Service Agencies with LGBT Programming

**Aids Resource Center of Wisconsin**  
R20 Plankinton Ave. PO Box 510498 Milwaukee, WI 53202 (414) 273-1991  
www.arccw.org

**Brady East STD (BESTD) Clinic** 12240 E. Brady St. Milwaukee, WI 53202 (414) 272-2144  
bestd@execpc.com  
www.bestd.org

**Children Service Society of Wisconsin**  
1212 S. 70th St. Milwaukee WI 53212 (414) 453-1400  
jane.otlow@cssw.org  
www.cssw.org

**OutReach**  
600 Williamson St. (Ste. P1) Madison, WI 53703 (608) 255-8582  
www.lgbt Outreach.org

**STD Specialties Inc.**  
32351 N. Holton St. Milwaukee, WI 53212 (414) 264-8800  
www.STDSpecialties.org

**NOT LISTED CORRECTLY?**  
EMAIL US YOUR CORRECT INFORMATION  
editor@quest-online.com



## SUPPORT THE G/L COMMUNITY ENDOWMENT FUND

### The Endowment Fund is our Future

Consider making a tax deductible contribution to the Gay & Lesbian endowment fund. The endowment fund exists to secure the financial future of our community in southeastern Wisconsin. Once our goal of \$50,000 is reached, we will begin to tap the interest earned from your donations. Your help in building up this fund substantially will make our goals and visions a reality.

Our work in the community has proven to be very successful for small organizations and programs that don't have the resources to do major fundraising appeals. Please consider making a donation today. Your gift will be matched with a matching funds gift from the W.L.M. Association if received by August 31, 2011. All gifts are tax deductible and will be acknowledged.

**G/L Community Trust Fund, P.O. Box 1686, Milwaukee, Wisconsin 53201**



Name \_\_\_\_\_  
Address \_\_\_\_\_  
City \_\_\_\_\_ State \_\_\_\_\_ Zip \_\_\_\_\_



## Check Out Our NEW 2011 LGBT Pride Buttons



Two diverse designs...  
you'll ♥ them both!

**Milwaukee PrideFest**  
June 10-12, 2011  
Market Square Booth #646



### Purchase Reduced Price Tickets for Red, White and Brew...

A PRIDEFUL fundraiser supporting the programs and services of the LGBT Center of SE Wisconsin.  
Advance sales - \$20      At the door - \$25

**Saturday, June 18 at Uncorkt... Wine All You Want**  
6:00 pm to 9:00 pm

**240 Main Street, Racine**

Show this ad when you arrive and receive one extra entry for the door prize.



Proudly Serving Racine Co., Kenosha Co., Walworth Co. and N. Illinois  
1456 Junction Avenue, Racine, WI 53403 • 262-664-4100 • [www.lgbtsewisc.org](http://www.lgbtsewisc.org)



# WISCONSIN LGBT BAR GUIDE

## LACROSSE/MADISON (608)

Impulse 132 W. Grand Ave Beloit, (608)361-0000  
 My Place 3201 South Ave LaCrosse (608)788-9073  
 Players 300 4th St, La Crosse (608)784-4200  
 Chances R 417 Jay St, La Crosse (608)782-5105  
 Club 5 Bar/Restaurant 5 Applegate Ct  
 Madison, (608)277-9700  
 Plan B 924 Williamson Street, Madison  
 Shamrock 117 W Main Madison (608)255-5029  
 WOOF'S 114 King Street, Madison  
 (608)204-6222 www.woofsmadison.com  
 Captain Dix (Rainbow Valley Resort)  
 4124 River Road WI Dells, WI (866) 553-1818

## NORTHERN WISCONSIN (715)

Scooters 411 Galloway Eau Claire (715)835-9959  
 JT's Bar and Grill 1506 N. 3rd  
 Superior (715)-394-2580  
 The Flame 1612 Tower Ave  
 Superior, WI (715)395-0101  
 The Main 1217 Tower Ave  
 Superior, WI (715)392-1756  
 OZ 320 Washington St, Wausau  
 www.totheoos.com (715)842-3225

## NORTHEASTERN WI (920)

Rascals Bar & Grill 702 E. Wisconsin,  
 Appleton (920)954-9262  
 Ravens 215 E. College Ave Appleton (920)364-9599  
 Napalese 1351 Cedar Green Bay (920)432-9646  
 SASS 840 S. Broadway, Green Bay (920)437-7277  
 THE SHELTER 730 N. Quincy St. Green Bay  
 920-432-2662 • theshelterclub.com  
 XS Niteclub 1106 Main Street, Green Bay  
 Debs Spare Time 1303 Harrison St Oshkosh  
 (920)235-6577  
 PJ's 1601 Oregon St. Oshkosh (920)385-0442  
 Blue Lite 1029 N 8th, Sheboygan (920)457-1636

## SOUTHEASTERN WI (262)

Club ICON 6305 120th (Off I-94) Kenosha,  
 (262)857-3240 www.club-icon.com  
 FIERTE 5722 3rd Ave Kenosha  
 (262)764-9713  
 JoDee's 2139 Racine St Racine (262)634-9804

\* means not on Milwaukee map

## MILWAUKEE (414)

- \* Art Bar 722 Burleigh, (414)372-7880
- 1 Ballgame 196 S 2nd (414)273-7474
- 2 Boom (& The ROOM) 625 S. 2nd St  
 (414)277-5040
- 3 btw lounge 231 E Buffalo St (414)273-4289
- 4 The CIRCUS 906 S. Barclay Ave  
 (414) 301-1424
- 5 DIX 739 S 1st Street
- 6 ETC 801S 2nd, (414)383-8330
- 7 Fluid 819 South 2nd (414)643-5843
- 8 Harbor Room 117 E Greenfield (414)672-7988
- \* Hybrid 707 E Brady St (414)810-1809
- 9 KRUZ 354 E. National (414)272-KRUZ
- 6 LaCage 801S 2nd, (414)383-8330
- 10 Midtowne Spa (*this is not a bar*)  
 315 S Water (414)278-8989
- 11 Mona's 1407 S. First St (414)643-0377
- 6 Montage 801S 2nd, (414)383-8330
- 12 Nut Hut 1500 W Scott (414)647-2673
- \* PURR 3945 N. 35TH Milwaukee
- 13 This Is It 418 E Wells (414)278-9192
- 14 Triangle 135 E National (414)383-9412
- \* Two 718 E. Burleigh St.
- 15 Walker's Pint 818 S 2nd St (414)643-7468
- 16 Woody's 1579 S 2nd (414) 672-0806



**Shortcut to Quest-online**  
 (use your smartphone scan app)

**Online since 1995**

News links from all over the world updated weekly plus our popular photo galleries of nightlife all over Wisconsin. Point your browser to


**[www.quest-online.com](http://www.quest-online.com)**



LOOK FOR

# WOOF'S

N O R T H W O O D S



**WOOF'S** MADISON

at **Milwaukee PrideFest**

Friday, Saturday, and Sunday

**June 10<sup>TH</sup>, 11<sup>TH</sup>, and 12<sup>TH</sup>**

**NASTY PIG BOUTIQUE**

Celebrate  
your **PRIDE** with  
**WOOF'S**

Friday August 19th  
**SPIT -N- SEAMAN  
CRUISE**

**STREET BASH**  
King Street August 20th  
4pm-Midnight

for more details visit us @

**[www.woofsmadison.com](http://www.woofsmadison.com)**



CHOOSE **TASTE.**

GREAT TASTE OF  
**PRIDEFEST**

*Miller*<sup>®</sup>  
**Lite**<sup>®</sup>

GREAT BEER  
GREAT RESPONSIBILITY

