

2010 OFFICIAL PRIDE GUIDE

# QUEST

SPECIAL EDITION VOLUME 17 May 28 - June 14, 2010



## The Nation's Biggest LGBT Pride Entertainment Lineup



*P r i d e F e s t*  
~ MILWAUKEE ~



Kathy Griffin  
Patti LaBelle  
Joan Rivers

Lena Katina  
from t.A.T.u

Bruce Vilanch  
Melissa Ferrick  
Charice  
Kaci Battaglia

Otep  
Jeffree Star  
Amanda Lepore  
Snap!  
Robert Verdi  
DJ Ralph Rosario

Over 150 Acts Performing Live!



LET US STIMULATE YOUR SENSES...  
AT MILWAUKEE'S NEWEST GAY LOUNGE

# TEMPT

A FRESH NEW  
APPROACH

COMBINING THE INTIMACY OF A  
**LOUNGE**  
WITH THE HEATED ENERGY OF A  
**NIGHTCLUB**

GRAND  
OPENING

THURSDAY  
JUNE 3RD

DOORS OPEN AT 7:30

**TEMPT**

COMPLIMENTARY **COCKTAIL**  
WITH THIS AD

NAME: \_\_\_\_\_

EMAIL: \_\_\_\_\_

324 E. Mason St. • Milwaukee, WI 53202 • 414-221-0228

## A letter from PrideFest President Scott Gunkel

Dear Festival-Goers,

We are extremely excited about the lineup of entertainers, vendors and activities that we're offering at this year's PrideFest, and look forward to celebrating our community with you on June 11-13, 2010.

Unfortunately, there is a shadow hanging over us this year. In 2009, our community logged a terrible milestone: more new HIV infections — especially among young African-American men who have sex with men — than we've seen since the early 1990s.

While many strides have been made in treatments for people with HIV, the hard truth is that HIV remains a debilitating, life-altering, and often life-shortening infection. Its spread among our community members must be stopped.

To do its part, PrideFest is sponsoring a number of free HIV awareness, education, and testing activities in the Health and Wellness section of the grounds this year, including:

- Rapid-results HIV testing
- Safer sex supplies
- Safer sex educational materials and/or personal counseling, including materials in Spanish and for those with transgender bodies
- Safe injection information specific to users of hormones and silicone
- Health information for people living with HIV
- Barrier demonstrations by and for youth
- Make-it-yourself message armbands

In addition, community health workers will be roaming the grounds, approaching people — especially those who appear to be young gay or bi men — to answer questions, share information, and encourage testing. If you're approached, we hope you'll recognize that we've trained and sponsored these workers as a sign of how much we value your presence in our community, and how much we want to be sure that you will be around to enjoy many more decades of PrideFest with us.

**Scott D. Gunkel**  
PrideFest President

### Festival Basics

Friday, June 11th, 3 p.m. – Midnight

Saturday, June 12th, 12 p.m. – Midnight

Sunday, June 13th, 12 p.m. – Midnight

### Purchasing Tickets

PrideFest patrons have the opportunity to experience a number of benefits: International entertainment, education and advocacy, music and dancing, fun family and youth activities, shopping and dining, performances, and more! Attendees can gain even more benefits by taking advantage of some of PrideFest's special promotions:

### Pre-Festival Discount Tickets

(Available at [www.pridefest.com](http://www.pridefest.com) until June 11th at 1 p.m.)  
Single-Day Admission – \$13 (save \$2 from gate price)  
Three-Day Weekend Pass – \$35 (save \$10 from gate price)  
Block of 25 tickets - contact the PrideFest Ticket Hotline at 414-241-4088

Reserved seating tickets for Headliner shows available online until Friday, June 11, 1 p.m. Afterwards, reserved seating tickets can be purchased at the main gate (based on availability).

Reserved seating begins approximately 45 minutes prior to the start of the headline show each night.

### Festival Weekend Gate Ticket Prices

One-Day General Admission – \$15

One-Day VIP – \$100

One-Day Reserved Seating –

\$95 - Kathy Griffin, June 11

\$95 - Patti LaBelle, June 12

\$55 - Joan Rivers, June 13

12 years and under – Free

### Get the VIP experience at PrideFest!

From - 1 day to 3-day Ultimate VIP, PrideFest has a special experience for you: 1-Day VIP - \$100  
3-Day VIP - \$225

VIP Ultimate w/ Meet & Greet \$350-\$500 depending on artist.

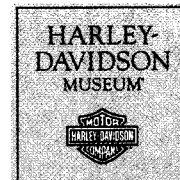
(1-Day VIP also available at gate during weekend)

These VIP tickets help support the festival's mission and operations while letting you experience PrideFest in style! 1-Day VIP includes admission for the day, and 3-Day gives you admission for the entire weekend. The Meet & Greet package is also a 3-Day admission pass, and includes a special backstage meeting with your favorite artist. By purchasing a VIP ticket, you will gain access to the Miller Lite VIP Oasis, an exclusive lounge area with great views of the Miller Lite Main Stage, enhanced sound for headline entertainment shows, and these amenities:



- Complimentary Miller Brewing Products, soda & water
- Complimentary hors d'oeuvres
- Private bathrooms
- Relaxed table seating
- Dedicated bar service

### Special Promotions



DISCOVERY WORLD  
innovation | technology | environment  
It's where we're going



Use your PrideFest ticket stub at Harley Davidson Museum and Discovery World from June 11-June 30, 2010. Just show it when visiting one of these Milwaukee landmarks, and receive a discount on admission!

PrideFest is produced by PrideFest, Inc.

The PrideFest Office is located in the  
Milwaukee LGBT Community Center  
Suite 203 315 West Court Street  
Milwaukee, WI 53212

414.272.3378 [www.pridefest.com](http://www.pridefest.com)

Mailing: PrideFest, Inc. P.O. Box 511763  
Address: Milwaukee, WI 53203

Publication of the name, photograph or other likeness of any person or organization in the Official 2010 Pride Guide is not to be construed as any indication of the sexual, religious or political orientation, practice or beliefs of such person or members of such organizations. PrideFest assumes no responsibility for advertisers' claims. PrideFest is a registered trademark. Entire contents ©2010 by PrideFest, Inc. except where specifically noted otherwise. All rights reserved. Reproduction, either in whole or part, is prohibited. Please continue to check [www.pridefest.com](http://www.pridefest.com) for updates and new information.

### PrideFest's Mission

The mission of PrideFest is to celebrate the diversity of Lesbian, Gay, Bisexual and Transgender (LGBT) culture and community.



June 11th, 12th and 13th, 2010

Midwest Pride Meets On Milwaukee's Lakefront  
Henry W. Maier Festival Park  
(Summerfest Grounds)

## QUEST

Quest Special Edition PrideFest Pride Guide  
is co-produced by Quest and PrideFest, Inc.

Quest Magazine

P.O. Box 1961 Green Bay, WI 54305

800-578-3785

©2010 No portion of this book may be reproduced without permission.

# Free Entrance with Donation of Four Non-Perishable Food Items to benefit the AIDS Resource Center of Wisconsin's Food Pantry



How would you like to obtain free admission into PrideFest AND help a great cause? Just bring four non-perishable food items to the AIDS Resource Center of Wisconsin (ARCW) Food Pantry for free admission. Available 12 p.m. – 2 p.m. on Saturday, June 12th and Sunday, June 13th at the Main Gate.

## Milwaukee Journal Sentinel Press Card

Extra! Extra! Read all about it! Card members who show their Press Club Card receive free admission Sunday, June 13th from Noon to 3 p.m.

*Additional promotions, including VIP Reserved Seating, are available at [www.pridefest.com](http://www.pridefest.com). Continue to check PrideFest's web site for updates.*

## Paper or Plastic? PrideFest accepts both.

All food, beverage and PrideFest merchandise can be purchased directly with cash or by credit card.

## WELCOME TO PRIDEFEST 2010!

Along with a new decade, 2010 brings a new PrideFest. New musical acts, new headline shows, and a new attitude! Throughout the years PrideFest has listened to what patrons want, and this year we focus on what some festival-goers consider to be underserved areas.

We've placed a greater focus on our educational areas, brought back a stage (or two), updated our historical areas, and even changed our headliner focus from musical to comical. As you walk the festival grounds this year, remember how fabulous it is to be in a community that celebrates and facilitates diverse ideas and opinions.

## Organizational Volunteers

Several organizations provide volunteer support for the beer pods, front gates and ticket booths. Be sure to tip them well, because these groups will keep their tips to support their programming. Organizations providing volunteer support this year include:

16th Street Community Health Clinic  
Castaways MC  
Galano Club  
Lesbian Alliance  
Milwaukee Gay Arts Center  
Milwaukee LGBT Community Center  
Washington Heights Rainbow Association  
WISCRAD - Wisconsin Rainbow Alliance for the Deaf  
Women's Voices Milwaukee

## Volunteer Corps

The Volunteer Corps is made up of hundreds of individuals who volunteer during festival weekend to help ensure that everyone has a good time. Thank you to every member of the Volunteer Corps for their assistance!

## PrideFest Task Force and Production Team

PrideFest is produced through the dedicated efforts of a volunteer team. The Board of Directors oversees the festival year-round and the Production Team develops and carries out the day-to-day planning of the festival.

## 2010 PrideFest Board of Directors

Scott Gunkel - President  
Gary Petersen - Secretary  
Peter Minns  
Paul Masterson  
Kate Sherry  
Gregg Hutterer

## 2010 PrideFest Production Team

Festival Producer	Peter Minns
Assistant to the Producer	Andrew Kyllonen
Accessibility Director	Todd Liebsch
Arts Building Director	Paul Masterson
Children & Family Activities Director	Brendan Barrett
Assistant Children & Family Activities	Eva Williams
Communications Director	Kate Sherry
Assistant Communications Director	Lindsey McKee
Entertainment Director	David Charpentier
Assistant Entertainment Director	Will Calder
Entertainment Assistant	Julie Thorsen
Dance Pavilion Stage Manager (Daytime)	Bryan Carstensen
Dance Pavilion Stage Manager (Evening)	Tony Bilot
PUMP! Manager	Gregg Hutterer
PUMP! Manager	John Murges
Box Office Manager	Theresa Sturzl
Box Office Manager	Kathy Papineau
Entertainment Hospitality Manager	Annette Holvey
Entertainment Merchandise Manager	Chris Segedy
Entertainment Security Manager	Maribel Santiago
Entertainment Photographer	Daniel Bissing
Entertainment Photographer	Sarah Paske
Food and Beverage Director	Tim Talsky
Assistant Food and Beverage Director	Eloisa Balderas
Hospitality Coordinator	Marie DuCharme
Marketplace Director	Derrick Soto
Assistant Marketplace Director	Sylvester Brown
Merchandise Director	Rob Braun
Miller Lite Main Stage Manager	Dave Glenn
Operations Director	George Schneider
Assistant Operations Director	Chaz Erdall
Proud Crowd/VIP Director	Mike Bellagio
Assistant Proud Crowd/VIP Director	Martino Angeles
Rainbow Stage Manager	Colin Gawronski
Religious Activities	Jeffrey Montoya
Religious Activities Assistant	Samuel Christensen
Security Director	Terrance Raffet
Security Assistant	Glen Fallenbeck
Sponsorship Director	Scott Gunkel
Stonewall Directors	Justin Hartman
Stonewall Assistant Director	Jason Parker
Volunteer Director	Deon Young
Assistant Volunteer Director	Sean Duerr
Assistant Volunteer Director	Ritchie Martin
Assistant Volunteer Director	Greg Bach
Youth Activities Director	Julie Bock
Assistant Youth Activities Directors	Jay Botsford
	Rachel Coles

## 2010 Official PrideFest Pride Guide Published by Quest

Mark Mariucci,  
Lindsey McKee,  
Kate Sherry,

Production & Design  
Editor  
Lead Contributor

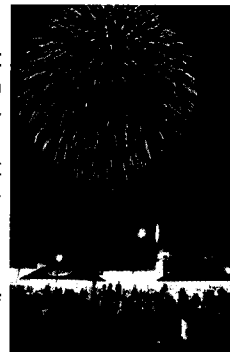
## OVER 21 - ID Bracelet: Get carded & stay carded

PrideFest takes a proactive approach to preventing underage drinking at the festival by using ID bracelets to allow patrons of legal drinking age to purchase alcoholic beverages throughout the festival grounds without being carded every time. All patrons who wish to drink alcohol must show an ID as proof that they are of legal drinking age. Bracelets will be available near the Miller Lite Main Stage and the Dance Pavilion areas. Look for signs marking these areas.

Bracelets must be worn at all times by everyone who will be purchasing or drinking alcoholic beverages. Those who are not wearing a bracelet while drinking alcohol will be escorted to an ID station and asked to provide proof of age.

## Fireworks

Did you know? PrideFest was the first Pride event in the nation to produce a fireworks show! The tradition continues this year at approximately 9:30 p.m. during the Saturday headline show. The rockets will be launched from Lakeshore State Park located east of the festival grounds.



## Milwaukee Pride Parade



The Milwaukee Pride Parade Committee organizes the parade, which steps off this year at 2 p.m., Sunday, June 13th on South Second Street between Lapham and Greenfield. It travels north on 2<sup>nd</sup> street past gay & lesbian businesses. For more information about the parade, visit [www.prideparademke.org](http://www.prideparademke.org).

## ACCESSIBILITY

PrideFest is dedicated to supporting and assisting our patrons who have disabilities. In compliance with the 1990 Americans with Disabilities Act, PrideFest is proud to state that we are continuously striving to make our festival accessible to everyone. We welcome your comments! You can reach us by calling (414) 272-3378 (voice) or e-mailing [accessibility@pridefest.com](mailto:accessibility@pridefest.com).

## Stage Area Seating

During PrideFest, the major stage area, the Miller Lite Main Stage, will offer raised platforms and accessible picnic tables (where marked) for patrons who use wheelchairs. Accessible seating at picnic tables is located throughout the grounds.

## Braille Schedules

Braille entertainment schedules will be available at all information centers on the grounds.

## Sign Language Interpreters for Performances

Sign language interpreters will be provided for our national acts at the Miller Lite Main Stage in the evening. However, an interpreter can be provided for specific performances upon request by contacting the PrideFest Accessibility Director at



# If he asks. You should know. **Get Tested. It's Free!**

## At no cost to you, we provide:

- STD testing and treatment for men.
- Hepatitis A & B Vaccinations for gay or bisexual men.
- Hepatitis B Vaccinations for straight men and women.
- Anonymous or name associated HIV testing and counseling.

Be sure to  
stop in at  
our booth  
at PrideFest  
this year!



**BESTD**  
CLINIC

Wanna play Doctor? Nurse?  
Maybe Phlebotomist?

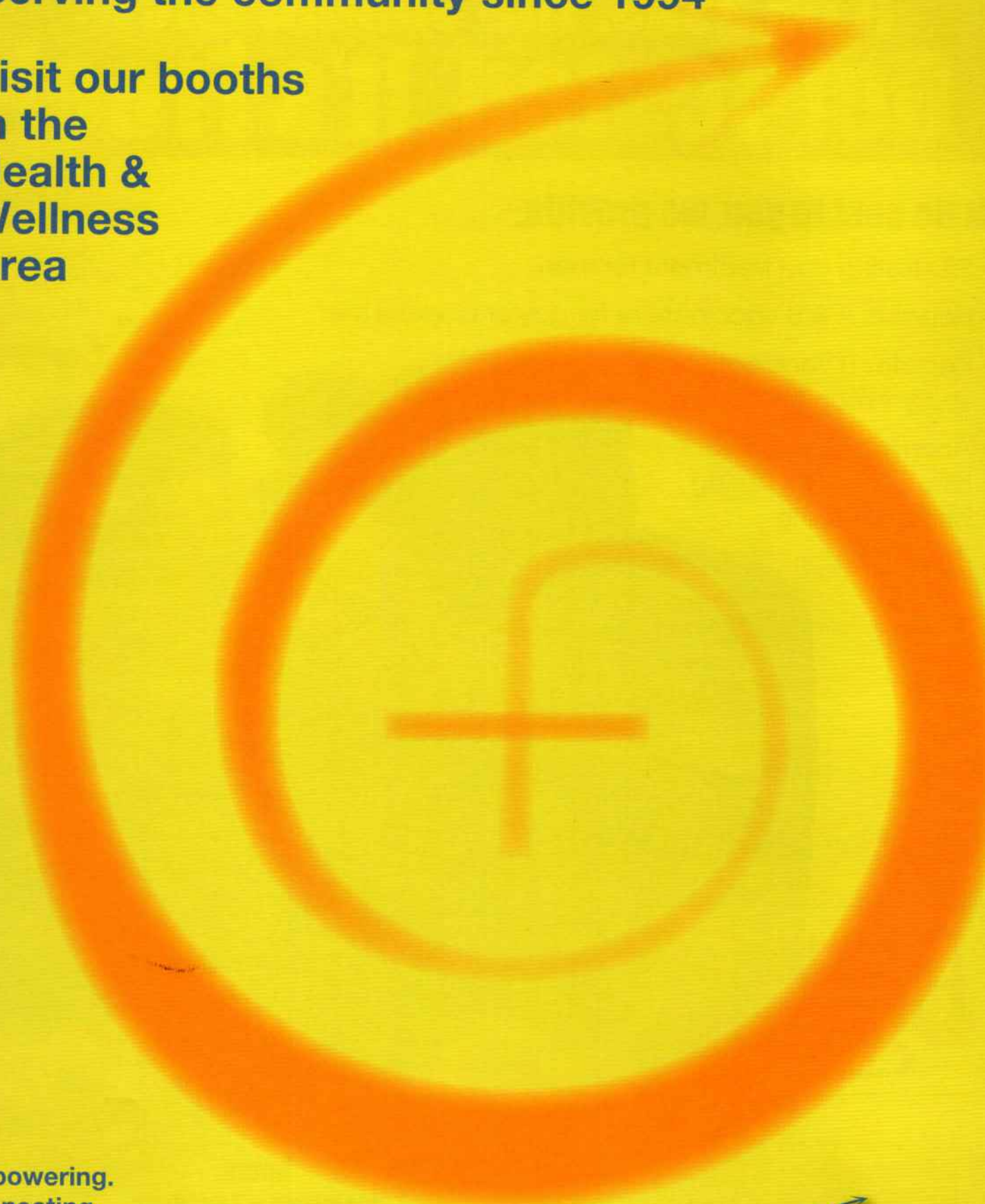
We are looking for licensed medical staff volunteers to administer vaccinations, blood draws, and work in our STD clinic.

**Hours:**  
**Mondays & Tuesdays**  
**6:00pm - 8:30pm**

**1240 East Brady St • Milw., • 414-272-2144 • [contactus@bestd.org](mailto:contactus@bestd.org)**

**Serving the community since 1994**

**Visit our booths  
in the  
Health &  
Wellness  
Area**



**Empowering.  
Connecting.  
Healing.**

**For the trans community,  
loved ones, and providers.**

**FORGE**  
[www.forge-forward.org](http://www.forge-forward.org)

po box 1272, milwaukee, wi 53201

[tgwarrior@forge-forward.org](mailto:tgwarrior@forge-forward.org)

414.559.2123



[accessibility@pridefest.com](mailto:accessibility@pridefest.com). A minimum of two weeks prior notice is required so an interpreter can be secured and materials/lyrics can be obtained from the artist/speaker.

#### Food and Bar Assistance

If you need any assistance carrying food and beverages on the festival grounds, please ask the food vendors' employees and they will be happy to assist you. Or, please contact a PrideFest "Courtesy Staff" member for assistance.

#### Drinking Fountains

Drinking fountains are located outside each restroom area and are accessible to all patrons. Drinking fountains can also be found near the Children's Area.

#### Telephones & TTY

Accessible public telephones are located outside of each restroom area. Many of our phones have volume-controlled handsets. A text telephone (TTY) is available behind the Harley-Davidson Roadhouse southwest of the Marketplace.

#### Wheelchair/Stroller Rental

A limited number of wheelchairs and strollers can be rented during PrideFest. Wheelchair/stroller rental stations are located just inside of the Main Gate. Scooters are also offered by our third-party vendor, APSCO – On the Go, and are available at the Main Gate. Rentals are on a first-come, first-serve basis, meaning no reservations will be taken, and all rentals require a minimal deposit.

**Please Note:** Service animals are allowed on the grounds provided the animal does not pose a danger or threat to other service animals or patrons. Owners of service animals are responsible for the animal's person-

al care. A relief area for service animals is located near the Respite Pavilion.

For accommodations for people who are deaf, hard of hearing, blind or have low vision and other services not mentioned, please contact the PrideFest Accessibility Director at [accessibility@pridefest.com](mailto:accessibility@pridefest.com).

### TRAVELING TO PRIDEFEST -WHERE TO STAY-

**DOUBLETREE HOTEL  
MILWAUKEE CITY CENTRE**  
611 W. Wisconsin Avenue  
Milwaukee, WI 53203  
Phone: 414-273-2950  
Fax: 414-273-7662



We are pleased to announce that the DoubleTree Hotel Milwaukee City Centre will once again be PrideFest's host hotel. Specially negotiated PrideFest rates will be available at this contemporary downtown hotel that provides close proximity to downtown amenities and features warmly furnished upscale guest rooms. Dine and relax with friends at the hotel's American bistro-styled Avenue Bar & Grill. Maintain your fitness regimen in the well-equipped Fitness Center or unwind by the seasonal, outdoor roof-deck pool. At the DoubleTree Hotel in the center of vibrant downtown Milwaukee, you will experience warm Wisconsin hospitality in the perfect location.

To make a reservation, visit the personalized PrideFest reservations site at DoubleTree or find it on [www.pridefest.com](http://www.pridefest.com). If you prefer to make your reserva-

tions by phone, call the hotel at 414-273-2950 OR 1-800-222-TREE. Be sure to mention that you would like the PrideFest group rate.

**General Mitchell International Airport (MKE)** is a 10-minute drive. Reserved valet parking is available. Also check out VISIT Milwaukee at [www.visitmilwaukee.org](http://www.visitmilwaukee.org).

#### Greater Milwaukee Convention & Visitors Bureau

You can find more information about travel to Milwaukee and its surrounding areas at the Greater Milwaukee Convention & Visitors Bureau by calling (800) 554-1448 or visiting [www.officialmilwaukee.com](http://www.officialmilwaukee.com).

#### HOW TO GET TO PRIDEFEST

For updated information on roadwork, call the Department of Transportation hotline at (800) ROADWIS or visit the D.O.T web site at [www.dot.state.wi.us](http://www.dot.state.wi.us).

#### PARKING AT THE FESTIVAL

Ample parking is available both in privately operated lots and along city streets. Fees vary. Vendors with booth spaces will receive directions to special unloading areas at the gates.

#### LOCAL BUS TRANSPORTATION

We are pleased to announce that PrideFest receives Festival Shuttle bus service from the Milwaukee County Transportation System. Shuttle service to PrideFest begins approximately one half-hour prior to the start of the festival and ends a half-hour after the event. Shuttles run approximately every 15 minutes along Wisconsin Avenue.

### OPENING CEREMONIES

6:30 p.m., Friday, Miller Lite Main Stage

The Opening Ceremony officially welcomes you to PrideFest 2010. Since 1987 the city's Lesbian, Gay, Bisexual, and Transgender (LGBT) community has assembled to celebrate its diversity and unity in the great Milwaukee tradition of a "fest." Our first Pride gatherings were humble. Attendance numbered dozens, then hundreds and then thousands.

Now, 23 years later, tens of thousands of LGBT people, their friends, families and allies attend the internationally recognized PrideFest.

This ceremony officially opens the 23rd Milwaukee PrideFest.

With PrideFest's top name entertainment and broad spectrum of offerings from belly dance to com-

mitment ceremonies, it is considered one of the world's greatest Pride celebrations.

The opening ceremony begins with a presentation of our flag by the Veterans Do Ask Do Tell Color Guard. Brian Firkus and Matt Walton will sing our National Anthem accompanied by Women's Voices Milwaukee (WVM).

Stand Up and Be Proud follows our national anthem. An LGBT Pride anthem. Communally composed by local songwriters Tori Fixx, Scott Malcom, Corky Morgan and Yolanda Roth, it will



be sung by Corky Morgan, Brian Firkus, Matt Walton and WVM.

PrideFest President Scott Gunkel will then introduce its Board of Directors, community leaders and sponsors, the people who make PrideFest possible.

Each year marks another milestone in our LGBT history. From the 1969 Stonewall Riots that launched the LGBT liberation struggle, to the election of out and proud LGBT politicians, to the recent passage of Federal hate crimes legislation, our progress on the road to equality is steady and sure.

#### Stand Up

Music & Lyrics by:  
Tori Fixx, Scott Malcom, Corky Morgan  
and Yolanda Roth

Thinking about all the things you have to say  
You think you've got something to give  
Don't ever settle for what you have today  
Honey, That's no way to live (right now)

Looking for a solid hand to hold (right now)  
Looking for someone on your side (right now)  
Tides turn with our strength in numbers  
We've got no reason, no reason to hide (We need to)

Stand up and be proud,

Don't worry 'bout the faces in the crowd  
To make your difference all you have to do is just  
Stand up, Right now

Brothers & sisters, young & young at heart (right now)  
There's got to be a better way (right now)  
The world around us may be torn apart  
But together we're all OK (right now)

Is it possible to sing with one proud voice (right now)  
Hear with you heart not just your mind (right now)  
The song we sing is for all the world to hear  
If you look deeper you will find (you need to)

Stand up and be proud...

We're standing on our own,  
With fear in the way  
We walk all alone  
We swallow words we need to say. Oh yeah  
We need to...

Stand up and be proud...

You can stand up and be proud  
Say it right and say it loud  
Let it ring through every crowd  
Listen, let us show you how  
To make your difference all you have to do is  
Just stand up, Right now

Stand up and be proud...



## 2010 – A Landmark Year



To commemorate PrideFest, the United States Postal Service has produced a special pictorial postal cancellation. It features our PrideFest logo and will be unveiled during the ceremony. The USPS will use this specially created postmark to cancel mail posted at its PridePost kiosk on the PrideFest grounds.

PrideFest has also designed a postage stamp to go with it. It's available at the PrideFest Merchandise booth. You can purchase stamps and send postcards or letters to your friends and family directly from PrideFest.

The special USPS postal cancellation may be obtained on postcards or letters at the PrideFest USPS Kiosk on Friday, June 11 from 3-6 p.m. as well as Saturday and Sunday, June 12-13, from Noon to 4 p.m.



### PrideFest Awards

Awards have been part of PrideFest for most of its 23-year history. They recognize community leaders, organizations and volunteers for their tireless dedication to the cause of LGBT equality. All contribute to the betterment of our LGBT life and to our mutual goal of creating positive change in our community.

This year is no different. PrideFest Production Director Peter Minns will present the PrideFest Medal for Community Achievement to the AIDS Resource Center of Wisconsin and BestD Clinic for their long years in the service of community health. QUEST publisher Mark Mariucci will receive the PrideFest

Medal for his continued support of the Wisconsin LGBT community through his dedication to informing the public through media.

Also recognized this year are organizations that volunteer their services to PrideFest, the Castaways and the Wisconsin Rainbow Alliance of the Deaf. PrideFest presents both organizations with a Certificate of Appreciation.

Following the award presentations, Scott Gunkel will officially declare the opening of PrideFest 2010.

### TAKE A PART OF PRIDEFEST HOME WITH YOU

The Official PrideFest Merchandise Booth offers a variety of festival products so you can always have something to remind you of the good times at PrideFest. T-shirts, caps, sweatshirts . . . Stop by and pick up a souvenir! The Merchandise Booth is just inside and to the south of the Main Gate.

## The PrideFest Marketplace 2010 Vendors

No visit to PrideFest is complete without a walk through the marketplace. With its diverse mix of supportive community businesses & community organizations, the Marketplace offers a unique mix of products and ideas. Marketplace vendors come from all over the country to be a part of PrideFest. Below you will find a partial list of LGBT and LGBT-friendly businesses and organizations participating in the Marketplace for PrideFest 2010. (Additional vendors may be added; however, following are the 2010 vendors as of publication.)



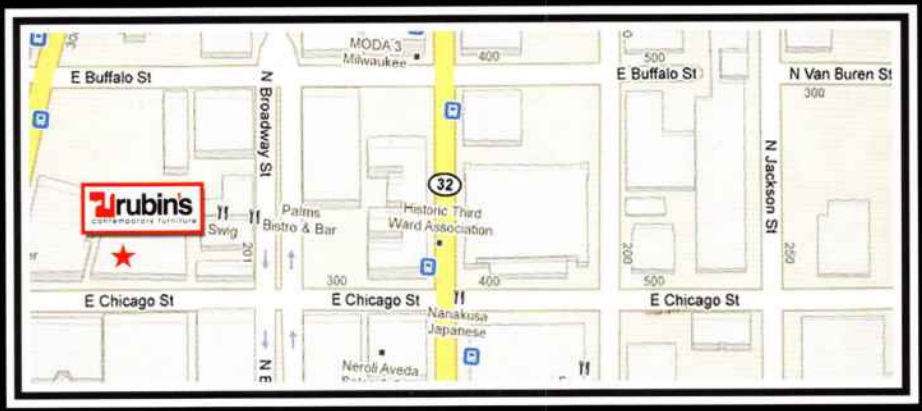
16th Street Clinic  
Accupuncture and Holistics Health Associates

Aiden James  
American Lung Association  
Annapurna Treasures  
Asian Creations  
Bath Fitters  
BestD Clinic  
C3 Designs  
Camel Cigarettes  
Castaway  
Cats Eye Glass  
Central Bark Doggy Day Care  
Cheese Curds  
Chicago Pride.com  
Chicago PrideFest  
Chiropractic Care Center-Franklin  
Chiropractic Care Center-Mayfair  
Democratic Party of Wisconsin  
Designs in Wire  
DITC Dykes In the City  
Dykes on Bikes  
Easy Mortgage  
Ecuador Manta  
Equality Wisconsin  
Equalizer Shirts  
Ethnic Fusion  
Ethnic Henna  
Event Toyz  
Everdry  
Everything's Just Pucci  
Fair Wisconsin  
Famous Cigars  
Fanatic Promotions  
Funky Flamingo  
Fusion Radio  
Girl Glass  
Glass Rainbows  
Grab Magazine  
Heart of The Sky  
Home Pride Remodeling  
Human Rights Campaign  
Illumine I Titanium LLC  
Jam's Jewels  
KB Designs  
La Crosse Pride  
Lars Mini Donuts  
Law Center for Children and Families

Lesbian Alliance  
LGBT Center of SE Wisconsin  
Liberty Gifts  
Magellan's Pizza  
Manhunt  
Martin Locke  
Mike Rickard  
Millie's Italian Sausage  
Milwaukee Gay Arts Center  
Moon Walk  
MRM

Nu-Line Ice cream  
Nut Vendor  
OutWear  
Outwards Books  
Pabst Theater  
Pen Dragon Jewelry  
Planned Parenthood  
Plymouth Church  
Premium Waters  
PrideFest Booth  
Progress Label Clothing  
Pro-Tech Wireless  
Psychic Reader Ms Reed  
Public Allies  
Pyramax Bank  
Renaissance Faire  
Risqué Business  
Sonia and Disappear Fear  
Star Ship Tattoo  
Stonewall Stage  
Sundance Vacations  
Survive Alive  
Todd Alsup  
ToolShed  
Train Station  
Tret Fure  
USA Sunglasses/Forever Sunglasses  
USPS  
Verizon Wireless  
Washington Heights  
Weather Tight Corporation  
WELLNESS STAGE  
Wisconsin Gazette  
Wisconsin Humane Society  
WISCRAD Interpreter





**rubin's**  
contemporary furniture

**Madison**  
317 E. Wilson St.  
Madison, WI 53703

**Milwaukee**  
224 E. Chicago St.  
Milwaukee, WI 53202

**Chicago**  
3045 N. Lincoln Ave.  
Chicago, IL 60657

[www.rubinsfurniture.com](http://www.rubinsfurniture.com)





**SATURDAY JULY 10th 2010**

**JOANNES PARK, GREEN BAY**

**DIVA, SONGWRITER & DJ: Ultra Naté**

LA Comedian & YouTube Star: **Deven Green** with Joel Bryant

Green Bay's Premiere Female Cabaret: **Glamarama**

Madison Blues Sensation: **The Charles Walker Band**

Chicago Rock Band: **Flame Shark**



**newpride.org**



BY CHOICE HOTELS

**Rooms ONLY**  
**\$89.99/ Night**

*PrideFest weekend only*

*Only minutes away from the Festival Grounds!*

**Downtown comfort without the Downtown Price.**

**For Reservations Please Call:**

**414-481-2400 or 1-866-481-2400**

**www.clarionmilwaukee.com**

5311 S. Howell Avenue Milwaukee, WI 53207

# SAVE THE DATE WE CELEBRATE 8!



part of the **GO PRIDE** network  
goprider.com

**Thursday, June 24th**  
**7PM – 9PM at Roscoe's**

Come join ChicagoPride.com as we celebrate eight years of service to the Chicago community. We're excited by our great history and unveiling a new direction for the future!



## LGBT History Project

PrideFest Art and Culture Building



The History Display has been a popular attraction at each PrideFest since 2003. The Display is seen by all to be a permanent archive to be built on in future years. It benefits not only the LGBT community, but also serves as a source of information for the non-LGBT community to better understand our contributions and history.

The UWM Archives will present a display of documents and photographs selected from its Lesbian, Gay, Bisexual, and Transgender Collection. The Collection is a joint effort by Archives and Special Collections to preserve and make widely accessible the recorded history of LGBT life and culture, particularly that of the Milwaukee area.

Long-time community activist and photographer Jerry Johnson has compiled a retrospective of his Wisconsin Light photographs. The first issue of Wisconsin Light appeared on Nov. 20, 1987. Published by Johnson and edited by his partner Terry Boughner, the paper's front-page banner included the motto: "Give the People Light and they will find their own way." Wisconsin Light's last edition appeared in early 2002.

Hundreds of photographs chronicle Milwaukee's LGBT community's personalities, organizations and events from 1987-1998 including ACT UP, Milwaukee AIDS Project, ARCW's Make-a-Promise Dinners, PrideFests and Pre-PrideFests, bar fundraisers, AIDS Walks, Pride Parades and much more.

## Children and Family Activities



Wisconsin Rainbow Families & PrideFest are pleased to present a variety of activities and events for children of all ages on Saturday and Sunday. The 2010 Children's area continues its focus on providing a balance of activities and entertainment for LGBT and alliance families! From magic to comedy to interactive family workshop, there is something for everyone! All day activities (Saturday and Sunday 12:30 p.m. – 6 p.m.)



## Youth Stage

Youth have the opportunity to enjoy PrideFest as well. Various programming for children and teenagers is available throughout the weekend.



## SkyGlider

The SkyGlider will be open to give you a birds-eye view of PrideFest. For a small fee, you can take a ride above the treetops and check out PrideFest the way the seagulls see it. The SkyGlider is located on the north end of the grounds near the Dance Pavilion.

## PrideFest Art and Culture Building



## Featuring: The Art of Thom Pawzun

The featured artwork is by Thom Pawzun. Along with artists Tom Rezza, Robert Uyvari (1941-1986) and others, Pawzun's illustrations graced In Step Magazine covers throughout the publication's first decade.

Pawzun's figural drawings represented the unabashedly gay consciousness of those heady days of post-Stonewall LGBT liberation. Uninhibited square-jawed beefcake and seductively sensual nudes expressed the new joy and self-satisfied identity of being out and proud.

At the same time, however, the AIDS epidemic was in its nascent stages. In Step's inaugural edition in February 1984 reported the Center for Disease Control's announcement of just over 3000 AIDS cases nationwide with 24 in Wisconsin. Pawzun and others used their talent to raise community awareness. Their artistic contribution helped begin the fight against complacency and to confront HIV/AIDS.

## The Saturday Softball League

Founded in 1977, the Saturday Softball League's (SSBL) main activity is to provide a softball league that runs on a

## PrideFest Volleyball Tournament



Located in the Health and Wellness area. Open volleyball play for PrideFest attendees will commence after tournament play both days and continue until dark. Saturday, June 12 - 10am to 3:30pm. Pool play to determine tournament seeding. Sunday, June 13 - 10am to 3:30pm. Double-elimination tournament. Members of the winning team will receive a free one year membership to GAMMA.

## Group Celebration of Our Relationships (formerly the Mass Commitment Ceremony)

Recognizing your relationship at the festival's beautiful lakefront location can help make your experience even more memorable. Clergy will lead a beautiful service of celebration and blessing. All couples will receive a certificate, flowers and partake in a wonderful cake (compliments of Simma's Bakery). Individual commitment ceremonies may also be scheduled throughout the day on Saturday and Sunday. Register online at [www.L-O-G.org](http://www.L-O-G.org) or at the Love of God Cathedral booth during the festival.

weekly basis during the late spring and summer time. The purpose of the league is to allow gay, lesbian, and bisexual players to gain experience and develop softball skills within a formalized structure. The league membership includes men and women, LGBT and non-LGBT, young and old. The league play is governed by rules set forth by the American Softball Association and the league body. The playing rules and format are almost identical to other leagues throughout the Milwaukee area.

For over 30 years SSBL has represented the Milwaukee LGBT community through sportsmanship and friendly competition. As a North American Gay Amateur Athletic Alliance (NAGAAA) founding city, Milwaukee has been on the forefront of international LGBT athletics. Last year marked an additional achievement for SSBL: it hosted NAGAAAFest 2009. It was the third world series played in Milwaukee. The first was in 1979 and the second in 1985. SSBL proudly presents a vast exhibit of Milwaukee gay softball memorabilia

## The UWM Library LGBT Archive

The LGBT collections in the Archives Department provide a unique perspective on the emergence of a gay and lesbian movement in Milwaukee since the late 1960s. Topical strengths of its collections include the gay liberation movement, gays and lesbians in the military, HIV/AIDS, and marriage equality. The UWM Library LGBT Archive display gives insight into this rare and important collection.

## Sunday Worship 10:00 a.m.



[www.VillageChurchMilwaukee.org](http://www.VillageChurchMilwaukee.org)  
130 East Juneau Avenue • Milwaukee, WI 53202

## BAY VIEW GARDEN AND YARD SOCIETY

**Bay View GAYS**—gay, lesbian and gay-friendly people living in the Milwaukee area who share a love of gardening and their community.

- ▶ Supporting public gardens and community projects
- ▶ Social gatherings

For more information, e-mail  
[bvgpresident@bvgays.com](mailto:bvgpresident@bvgays.com)

1995-2010  
CELEBRATING 15 YEARS  
OF GARDENING PRIDE!



[www.bvgays.com](http://www.bvgays.com)



# GETTING TO KNOW THE GROUNDS

## Key Points of Interest

### Miller Lite Main Stage

Sponsored by Miller Lite  
Located in the heart of the PrideFest grounds, the Miller Lite Main Stage presents a non-stop lineup of national, regional and international acts.



### Dance Pavilion

Featuring the PUMP!  
DJ Showcase

**PUMP!**

Sponsored by PUMP!, Decibel, Stack'd, Three Olives, IG Designs

**decibel STACK'D**

**ig ThreeOlives**  
DESIGNS VODKA

During the day, the Dance Pavilion provides a host of performances. At night, the space becomes the biggest outdoor dance party on Lake Michigan! Located north of the main gate entrance and fountain area. This year's theme: "Cyon in Wonderland" with your fabulous host, Cyon Flare, hosting all weekend.

### Rainbow Stage

Returning this year with a bang! The Rainbow Stage is host to many fabulous acts, and shows, so be sure to stop on by to check it all out!

### Health & Wellness Area and Stage

Sponsored by ARCW, BestD Clinic, Milwaukee LGBT Community Center, Diverse and Resilient, and FORGE, Department of Health Services State of Wisconsin



it's third year, this area, located directly inside the Main Gate with the Health & Wellness Stage at the Lake Michigan end of the area, will provide information and activities for those seeking healthier lifestyle choices. The Exercising Pride: PrideFest's Health & Wellness Area was created as a space to increase the visibility of LGBT non-profit organizations and programs and to showcase their robustness and viability. Each booth has fun and creative activities that engage participants and promote health and wellness of the LGBT communities...and oftentimes free gifts!

The first 500 people to visit booths in the Health & Wellness Area each day will receive special prizes and a chance to win a Trek bike.

**Premium Waters, Inc.**  
Bottled Water Solutions

Special Thanks to Premium Waters, Inc. for providing complementary water.

Expanded HIV testing hours at BESTD's

**Big Tent of Testing!**

**BESTD CLINIC**  
Friday 3pm-8pm  
Saturday Noon-8pm  
Sunday Noon-8pm

### PrideFest Art and Culture Building

Sponsored by The Milwaukee Gay Arts Center (Logo)  
Located just north of the Dance Pavilion, the PrideFest 2010 Art & History Pavilion presents a special exhibition by the Saturday Softball League, a video program by the Milwaukee LGBT Film/Video Festival and an art show by the Milwaukee Gay Arts Center.

### Milwaukee LGBT History Project

The UWM Archives will present a display of documents and photographs selected from its Lesbian, Gay, Bisexual, and Transgender Collection. The Collection is a joint effort by Archives & Special Collections to preserve and make widely accessible the recorded history of LGBT life and culture, particularly that of the Milwaukee area. The 2010 LGBT History Project exhibit is inside the PrideFest Art and Culture Building, and features a pictorial history of LGBT life in Milwaukee.

### Stonewall Stage

Sponsored by Gruber Law Offices, and Dan & Susan Ratkowski Fund

**GRUBER LAW OFFICES, LLC**  
"One call...that's all!"  
414-276-6666

**Daniel & Susan Ratkowski Family Fund**

This smaller stage area hosts intimate performances and discussions on topics important to the LGBT community.

### Youth Stage

Youth have the opportunity to enjoy PrideFest as well. Various programming for children and teenagers is available throughout the weekend. The Youth Stage is behind the food vendors, east of the Marketplace.

### Children's & Family Stage

Sponsored by Wisconsin Rainbow Families (WRF) - a volunteer organization and community space dedicated to supporting LGBT Families & friends located throughout Wisconsin.

### Children's & Family Stage also sponsored by:

The White Family in Memory of Pat White - Brother, Son, Uncle, Friend...and always PROUD!



**Pat White 02/23/1959 - 01/16/2010**

"PrideFest was Pat's favorite time of year. He sported his PrideFest gear year-round and was never afraid to show his true colors. Pat loved celebrating each year with everyone - and we know he's still celebrating with us and will be in our hearts forever!"

Remember to have fun, be proud and just be YOU!  
We wish you all a very happy Pride!"

-The White Family

The Children's & Family Stage place for families to come and have fun. We have many different types of acts and activities for children of all ages.

### Food Vendors

Several restaurants and other food vendors can be found to the east and north ends of the Miller Lite Main Stage and throughout the grounds.

### Marketplace

Need to shop? We can help. Visit the Marketplace on the south end of the Miller Lite Main Stage for a great variety of business vendors.

### Organizational Vendors

Learn about and support local and national LGBT and LGBT-friendly organizations. Their booths can be found throughout the grounds stretching from the main gate entrance to the lakeshore.

WWW.MASTERMINDTECH.NET

**.COM DOMAINS \$8.75/YR**

**.INFO SPECIAL \$1.99 (1ST YEAR)**

**FULL DNS CONTROL**

**TRANSFERS \$9.99**

**INCLUDES ONE ADDITIONAL YEAR OF REGISTRATION**

BEST DEALS ON DOMAINS & HOSTING

**HOSTING \$12/MO INCLUDES:**

PLANS STARTING AT \$5/MO

**1 GB STORAGE PLUS UNLIMITED EMAILS, MYSQL SUB DOMAINS FTPS**

**COMPLETE CPANEL ACCESS**

**FANTASTIC FREE AUTO-INSTALLATIONS OF: COMMUNITY FORUMS SHOPPING CARTS PHOTO GALLERIES, AND MUCH MORE!**

608.931.7482

WE PROUDLY HOST THESE LGBT-OWNED BUSINESSES:  
 CLUB-5.COM, JUSTTERRY.COM, SHAMROCKBAR.COM, HAWKSNESTRESORT.COM,  
 MADISONBUSINESSALLIANCE.COM, ARTWORKSMADISON.COM, JOHNNYVELVET.COM,  
 MEDHOOKAHCAFE.COM, TECANDASSOCIATES.COM



# Exercising Pride

## PrideFest Health & Wellness



>> **The Exercising Pride: PrideFest's Health & Wellness Area** was created as a space to increase the visibility of LGBT non-profit organizations and programs and to showcase their robustness and viability.

>> Each booth has fun and creative activities that engage participants and promote health and wellness of the LGBT communities and oftentimes **free gifts!**

>> The first 500 people to visit booths in the Health & Wellness Area each day will receive special prizes and a **chance to win a Trek bike!**

>> **Expanded HIV testing hours** at BESTD's Big Tent of Testing!  
 Friday, 3pm – 8pm  
 Saturday, Noon – 8pm  
 Sunday, Noon – 8pm



**PrideFest's Health and Wellness Area**  
**Hours: Open Sat & Sun, Noon to 6pm**

SPONSORS:

**BESTD**  
CLINIC



Diverse & Resilient



**FORGE**



Milwaukee LGBT Community Center



Excellence in HIV Health Care



Complimentary water provided by:  
**Premium Waters, Inc.**  
 ROLLING WATER SOLUTIONS



# *Thank you* to this year's agencies for participating in Pridefest's Health and Wellness Area!

## *Exercising Pride* PrideFest Health & Wellness

- ARCW
- AIDS Walk
- Clinic
- Outreach
- WI AIDS Advocacy
- BestD Clinic
- Cream City Squares
- Diverse & Resilient
- Connexus/AAMSM
- Lesbian & Bisexual Women's Health Initiative
- SHEBA
- Youth Advisors
- FORGE
- Galano Club
- Gay Volleyball League
- H.I.M.
- Image of Us Sports
- Lesbian Alliance
- Milwaukee GAMMA
- Milwaukee Gay Arts Center
- Milwaukee Gay Soccer Association
- Milwaukee LGBT Community Center
- Anti-Violence Program
- Breast Health Program
- Children Services Society of Wisconsin/UWM Training Program
- rm2breathe

- Milwaukee Metropolitan Community Church
- PFLAG
- Q-BLOK
- Reiki Association
- Seniors in Charge
- Shoreline Milwaukee
- Sixteenth Street Community Health Clinic & City of Milwaukee Health Department
- The Queer Program
- UMOs
- Universal Anglican Church
- Vets Do Ask, Do Tell
- Wisconsin Anti-Violence Effort
- Women's Voices Milwaukee



SPONSORS:

**BESTD**  
CLINIC



Diverse & Resilient

**ARCW 25**  
AIDS Resource Center in Wisconsin  
Excellence in HIV Health Care



**FORGE**



Complimentary water provided by:  
**Premium Waters, Inc.**



## PrideFest announces Announces PridePost



With many thanks to the work on the behalf of the Milwaukee Lesbian, Gay, Bisexual, Transgender (LGBT) Community Center, PrideFest and the United States Postal Service have collaborated to produce the first PrideFest postal cancellation and postage stamp!

The special USPS cancellation comes as a result of an ill-fated 2009 Milwaukee LGBT Community Center Pride Month display at Milwaukee's downtown post office. The display, which featured prominent LGBT historical figures and celebrities along with a history of the LGBT Pride flag and pink triangle, was removed from the lobby the same day after being erected.

Dr. Maggi Cage, Milwaukee LGBT Community Center's Executive Director, had been contacted by the post office in regards to coordinating an LGBT Pride Month display for the post office lobby during the 2009 Pride Month.

Over the next couple of weeks Cage worked closely with post office personnel to put together an impressive display of biographies of famous LGBT people, pictures and historical descriptions of the Rainbow Flag and Pink



Milwaukee LGBT Community Center

Triangle along with photos of historical LGBT people such as Oscar Wilde, Rock Hudson, Billie Jean King and others.

The display centerpiece was the US Postal Services own AIDS Ribbon stamp.

On Monday June 1, 2009 Cage met with post office personnel and erected the display in the main lobby of the downtown post office in the three designated display cases.

Shortly after its installation, it was removed by order of Milwaukee Postmaster, Charley Miller. According to an official USPS statement released later, the reasoning was due to "proper official procedures" not being utilized as specified in the USPS guidelines for lobby displays.

"I was very disappointed that the display had been removed with out any communication from the post office informing me of their decision or any explanation as to why it was removed," says Cage.

So, she took it upon herself to set things right. She spoke to Miller on several occasions to come to some kind of resolution to benefit all. In a gesture of good will, Miller not only issued an apology to the local LGBT community; he also suggested the creation of a pictorial postmark cancellation to commemorate the LGBT Community.

"Maggi Cage asked if PrideFest was interested in being the logo chosen, since we are the largest public

event of the LGBT community in Wisconsin," said PrideFest President Scott Gunkel. "It was a very generous offer, and, of course, we said yes."

Taking the idea one step further, PrideFest board member Paul Masterson offered to design a special PridePost postage stamp to be sold at PrideFest. Alan Piotrowicz, MGAC board president, worked the design into a stamp. It shows the PrideFest logo over 2010 on a fluttering Pride flag background.

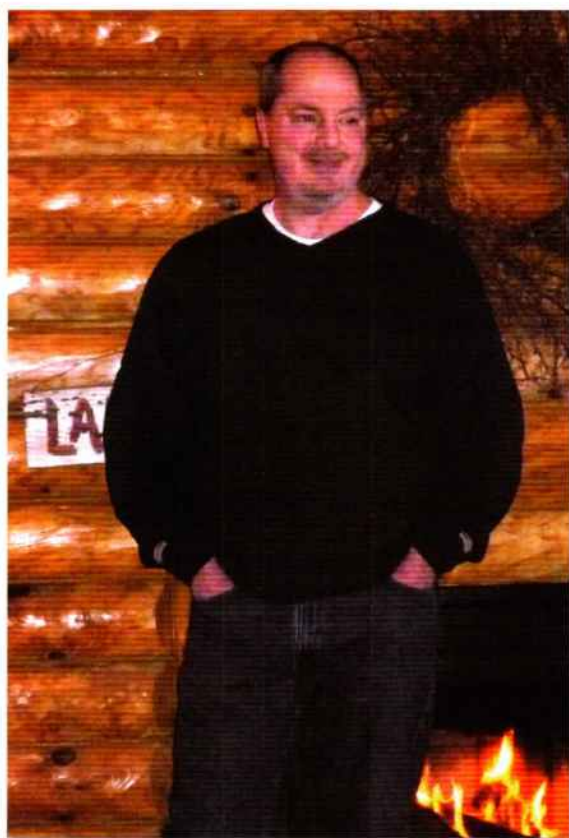
PrideFest 2010 Cancellation Stamps and Postage Stamps will be provided at a staffed USPS kiosk on the PrideFest Grounds. A postal worker will cancel stamps on letters and postcards during the three-day festival. The stamp will be available at the PrideFest Merchandise Booth. You can purchase stamps and send postcards or letters to your friends and family directly from PrideFest.

The special pictorial cancellation which features the PrideFest Milwaukee logo and the date will be unveiled during the Opening Ceremony at 6:30 p.m. on Friday, June 11, opening day of the festival.

"It's just such an incredible honor," said Gunkel. "With the help and work of the Milwaukee LGBT Community Center, and perseverance of Dr. Maggi Cage, PrideFest is allowed to shine even brighter this year. We are very grateful for this honor."

The special USPS postal cancellation may be obtained on postcards or letters at the PrideFest USPS Kiosk on Friday, June 11 from 3-6 p.m. as well as Saturday and Sunday, June 12-13, from Noon to 4 p.m.

Sheets of 20 stamps will be available for purchase through the PrideFest website [www.pridefest.com](http://www.pridefest.com). The PrideFest Merchandise Booth will offer sheets & individual stamps.



02/23/1959 – 01/16/2010

## IN MEMORY OF PAT WHITE

Brother, Son, Uncle, Friend  
and always

**PROUD!**

***THE WHITE FAMILY WOULD LIKE  
TO WISH EVERYONE  
A HAPPY AND SAFE PRIDEFEST!!***

PrideFest was Pat's favorite time of year.

He sported his PrideFest gear year-round  
and was never afraid to show his true colors.  
Pat loved celebrating each year with everyone  
and we know he's still celebrating  
with us and will be in our hearts forever!

**Remember to have fun, be proud and just be YOU!  
We wish you all a very happy Pride!**



## PRIDEFEST 2010 FRIDAY STAGE LINEUP

Friday, June 11 - 3 p.m.

**Miller Lite Main Stage**

**Pauline Pisano**

New York City, New York

Pop/Rock

<http://www.paulinepisano.com>

Pauline Pisano is an edgy and romantic singer/songwriter with an unexpected pop/rock sensibility. From a very early age, she has been receiving praise for her profoundly unusual voice; however, it is her unique sense of story and melody that have led her to win several national and international songwriting awards. Originally trained in theater, Pauline has spent the last 5 years working in New York City as a singer/songwriter.



**3 p.m. Dance Pavilion**

**KatieBeth**

Milwaukee, Wisconsin

Country [www.katiebeth.net](http://www.katiebeth.net)

With a voice born in rock and roll and stained by whiskey KatieBeth powerful energy on stage and raw vocal talent of twenty years is the kind of talent ready to make her own blazing trail in the music world. Since 2004, she has been rocking it out in Wisconsin and Tennessee at festivals, in her own band, and in the Colgate Country Showdown where in 2005 she took second place out of 1,400 contestants at the WI state Finals.



**3 p.m. Rainbow Stage**

**Joe Richter**

Milwaukee, Wisconsin

Pop/Rock

[www.myspace.com/joerichtermusic](http://www.myspace.com/joerichtermusic)

Joe Richter began his musical journey at an early age. Soon after seeing Billy Joel perform, he was inspired to teach himself to play piano, guitar, and harmonica. Currently a solo artist, Joe has played with several bands over the years, even recording in Nashville. Joe's goal is to play to larger, more diverse audiences, eventually leading to his dream of being a full-time musician.



**4:15 p.m.**

**Miller Lite Main Stage**

**SONiA Featuring disappear fear**

Baltimore, Maryland

World Pop

[www.disappearfear.com](http://www.disappearfear.com)

SONiA is one of the most dynamic performers in music today; she performs energetic, conscience-driven music. Solo or with her band disappear fear; she delivers powerful songs that challenge injustice, performed with passion and hope. Touring 180 internationally, SONiA sings and composes in English, Spanish, Hebrew and Arabic. She makes her debut in Milwaukee at PrideFest 2010 with her band disappear fear.



**4:15 p.m.**

**Dance Pavilion**

**Truth in Fiction**

Milwaukee, Wisconsin

Pop/Rock

[www.truthinfiction.com](http://www.truthinfiction.com)

What's the truth about Truth in Fiction? Their roots stretch across several states and a couple continents. Truth in Fiction formed as facts, when Mike Wisth (vocals/guitar) and guitarist Daniel Beres were still sporting peach fuzz. Later adding bass player Kristian Riley (ex-Citizen King) to the line-up, the band hit the studio head on and landed a record deal with Fabtone Records in Japan.



**4:15 p.m. Rainbow Stage**

**Aiden James**

Philadelphia, Philadelphia

Folk/Rock

[www.aidenjamesmusic.com](http://www.aidenjamesmusic.com)



An independent singer-songwriter born in the City of Brotherly Love, Aiden is touring internationally. Guitar blazing and vocals soaring, after you hear Mr. James sing, you will quickly understand why this young man is appearing on iPods everywhere. Aiden James is not only finding a place in our hearts, he's on the run with them!

**5 p.m. Stonewall Stage**

**Come Again: Enhancing Your Orgasm**

Milwaukee, Wisconsin

Educational

Want to learn how to have longer, stronger, or multipler orgasms? In this workshop, sexuality educator Laura Anne Stuart, owner of the Tool Shed erotic boutique, will discuss the physiology of human sexual response and techniques to enhance orgasm for you or your partner. All genders welcome.

**5:15 p.m. Rainbow Stage - Mr. and Miss PrideFest 2010**

Milwaukee, Wisconsin

Pageant

Male & female competitors for the titles must interview with the five judges before the pageant starts. The spectators will then see each contestant compete in two other categories. For the male it will be the talent portion and the formal wear portion. The females will compete in talent and evening gown. Mr. and Miss PrideFest 2009 will perform and crown the winners



**5:15 p.m. Dance Pavilion**

**One Lone Car**

St. Louis, Missouri

Pop/Rock

[www.onelonecar.com](http://www.onelonecar.com)

Founded in 2004, this multiple genre band became a touring machine. Adding together the talents of four young men that create a sound combining piano ballad, driving rock-and-roll, all tied together with a pop twist, they quickly caught the eye of national touring bands and have toured and opened for many national acts.



**5:30 p.m. Miller Lite Main Stage**

**Super Satellite**

Central New Jersey

Alternative Rock


[www.myspace.com/supersatellitemusic](http://www.myspace.com/supersatellitemusic)

Super Satellite is a modern indie rock band with a retro Brit pop. The collective sound brings something new and positive to the music scene. The songs are written by Christian Edwards who also serves as the lead vocalist and rhythm guitarist. Tim Foster is the band's lead guitarist and also sings harmonies, plays lap steel, mandolin and banjo on occasion. In addition to being a great musician, Super Satellite has performed innumerable shows since they first started playing the New York and New Jersey club scenes.




**Wag your Tail with Pride!**















SPAWOOF

We pamper your pup from head to tail

663-WOOF(9663) • [www.spawoof.net](http://www.spawoof.net)



# Milwaukee Reiki llc

Jeffrey Montoya • Reiki and Therapeutic Massage  
www.MilwaukeeReiki.org • 414-793-4828

Use this ad for a \$10 discount on your session

## Nyle Biondi, MS, LMFT

Proudly  
serving  
LGB & T  
individuals,  
couples &  
families

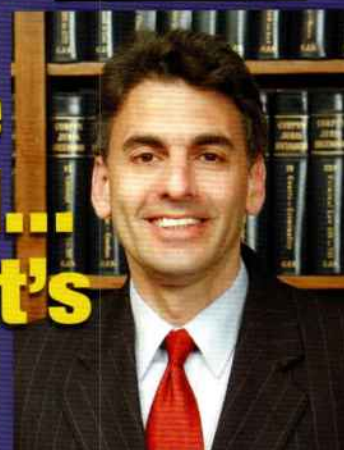
nyle@nylebiondi.com  
608.233.7311  
Madison, WI



# GRUBER

LAW OFFICES, LLC

**One  
Call...  
That's  
All!**



**As Seen  
On TV**

*Shepherd's*  
**Best Milwaukee  
Winner**  
Best Lawyer 2007:  
Personal Injury

ATTORNEY DAVID E. GRUBER

**CAR ACCIDENTS SERIOUS INJURIES**

**NO FEES UNLESS SUCCESSFUL  
HOME & HOSPITAL VISITS AVAILABLE**

**414-276-6666**

# Take **PRIDE** in Your Health!

While you're *out and about* at Pridefest, stop by the ARCW booth  
in the Health & Wellness area for information about:

## FREE RAPID HIV TESTING

Test Results in 20 Minutes

## FREE STD TESTING

Call (414) 273-1991  
to schedule an appointment

## IMSexEd Online Information & Outreach Program

Ask Ed your questions at: [gay.com](http://gay.com)

Adam4Adam • Facebook • Twitter

or send an e-mail to:

[IMSexEd@arcw.org](mailto:IMSexEd@arcw.org)

Look for Ed soon on Grindr, Purpll, Boy Ahoy,  
Manhunt, Black Gay Chat & Craigslist



**Join us as we celebrate and support  
Wisconsin's diverse LGBT community!**

**ARCW** **25**  
AIDS RESOURCE CENTER OF WISCONSIN  
Excellence in HIV Health Care





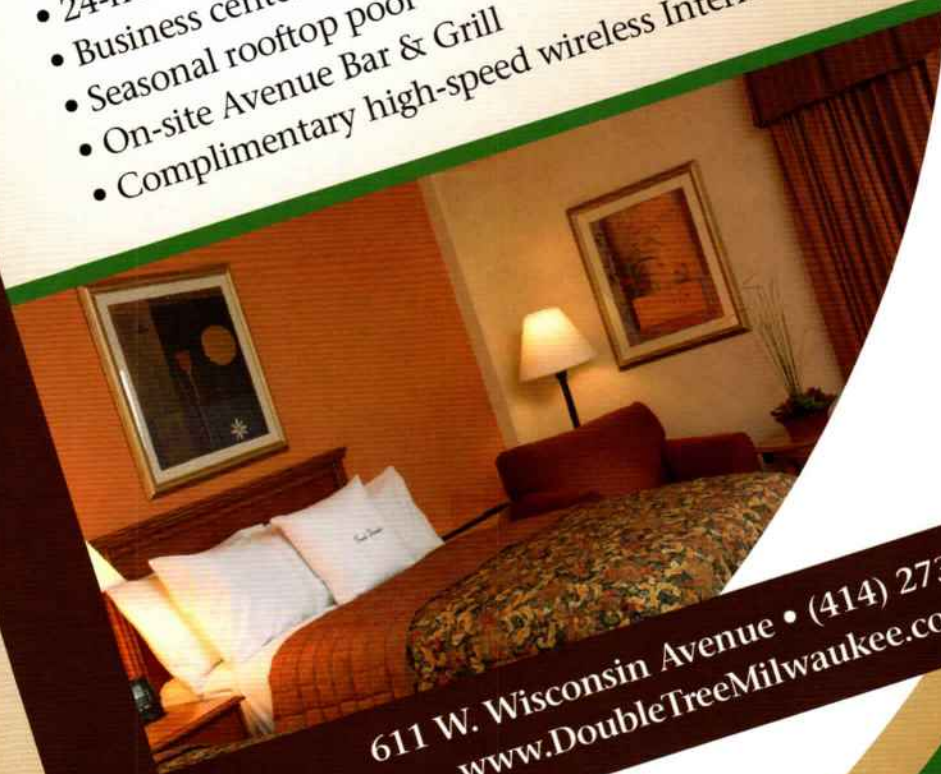
# DOUBLETREE<sup>®</sup> HOTEL

MILWAUKEE CITY CENTER

The  **Hilton** Family<sup>®</sup>

Wisconsin's newest DoubleTree Hotel in downtown Milwaukee has already been rated as a Top 10 DoubleTree nationwide by smart travelers just like you. The great location, generous amenities and recent renovation will win you over, too!

- Across from the Midwest Airlines Convention Center
- Walking distance to the Bradley Center, Marquette campus and Grand Avenue Mall
- 24-hour covered valet parking
- Business center and fitness center
- Seasonal rooftop pool
- On-site Avenue Bar & Grill
- Complimentary high-speed wireless Internet



611 W. Wisconsin Avenue • (414) 273-2950  
[www.DoubleTreeMilwaukee.com](http://www.DoubleTreeMilwaukee.com)

# Upgrade. Downtown.



# PRIDEFEST 2010 FRIDAY STAGE LINEUP

**6 p.m. Stonewall Stage Interfaith Prayer Service**  
Gathering around the theme "Rainbow Promise," join local LGBT-friendly clergy to kick-off PrideFest with an interfaith prayer service, which will include beautiful music and prayer. Join your sisters and brothers from diverse faiths as we embrace our spirituality in this beautiful outdoor venue.

**JOIN THE CHOIR!** Our Interfaith Choir will be led by Unitarian Church North Music Director Twila Bergeron. The Interfaith Choir will rehearse at Twila's home church, Unitarian Church North, at 13800 North Port Washington Road in Mequon, on Sunday, June 6th, from 4 p.m. to 5:30 p.m. Please come and raise your proud voice in song and worship!

Participating congregations include: Village Church, Universal Anglican Church, Milwaukee MCC, SS Cyril and Methodius United Independent Catholic Church, Divine Word Lutheran Church, Pentecost Evangelical Lutheran Church and more! Contact PrideFest's Religious Director to join our list of participating congregations.

**6 p.m. Milwaukee Gay Arts Center Arts & Culture Stage**

**PINK CHAMPAGNE**

by Neil Haven (Reading)

Milwaukee, Wisconsin

Art/Culture

[www.uprootedmke.com](http://www.uprootedmke.com)

Pink Champagne image

Donald's relationship with his conservative son Gene never recovered after Donald came out and split with Gene's mother 25 years ago. Now in his sixties, Donald and his husband Patrick are surprised by a visit from Donald's rarely seen 17-year-old grandson, Joey, who happens to be sporting a black eye. Joey announces that he also is gay and will be heretofore living with "grandma and grandpa." Gene and his wife Amy must now chase down their son to Donald's house for an impromptu family reunion. Uprooted Theatre and the Milwaukee Gay Arts Center are proud to present a reading of this new play, directed by Uprooted artistic director Dennis Johnson.



**7:30 p.m. Miller Lite Main Stage**

**House of Winehouse**

Chicago, Illinois

Tribute/Pop [www.houseofwinehouse.com](http://www.houseofwinehouse.com)

A 5-time Grammy winner, hailed as a musical genius; her latest album, "Back to Black" has made the U.K.'s Top 10 List of best-selling albums of the 21st century—it is no wonder why a band would want to emulate the unique style & unforgettable voice of the incomparable Amy Winehouse. Dana DeLorenzo (lead vocals), Ken Hunnemedder (guitar), Charlie Drews (bass), Patrick Gunderson (drums), Ellis Seiberling (trombone), Jerry Mohlman (trumpet) and Jay St. Germain (bari sax) banned together in an awesome tribute to the entertainer.



**7:30 p.m. - 8:45 p.m.**

**Milwaukee Gay Arts Center**

**Arts & Culture Stage**

**The Feast of Isis**

Featuring Shaia Fahrid &

**Milwaukee Belly Dance**

Milwaukee, Wisconsin

Art/Culture

Shaia Fahrid is the owner of Astor Street Dance Studio in Milwaukee. She directs two student troupes, Serpentine Dream and Extreme Taqsim, which perform all over Wisconsin and Illinois. This is their fourth year at PrideFest! Shaia invites other area dancers to join in their stage performance; among them are Galatea, Kish Kish, Layali, Jeannette and Shelby Daft. Shaia also produces a monthly haffa, or belly dance party, at the Milwaukee Gay Arts Center. [www.milwaukeebellydance.com](http://www.milwaukeebellydance.com)



**6 p.m. - Midnight Dance Pavilion PUMP! Presents**  
**Cyon in Wonderland with your Mad Host: Cyon Flare**  
**Plus Special Effects & Appearances By: Laseronics, VJ Brye, Snow Fire, spHERE and NOW, Hoop D-Lite**

**CYON FLARE**

Chicago, Illinois Dance/Pop

[www.myspace.com/cyonflare](http://www.myspace.com/cyonflare)

Billboard recording artist Cyon Flare is no ordinary performer; he is extraordinary and all about the movement of the crowd's energy. There is excellence in being fabulous and beautiful when making a fierce connection with the audience. His innovative costumes, influenced by Roman style and Las Vegas showgirl movies, creates an energy that commands the crowd's attention whether it's making appearances at events or performing live. Cyon Flare has enjoyed the success of two billboard tracks. The First "Everybody Everybody" charting at #31(2008), the Second "Rise" charting at #36 (2009).



**6 p.m. - 7 p.m. DJ KELLY**

Milwaukee, Wisconsin

DJ /Dance

[www.myspace.com/djkellymke](http://www.myspace.com/djkellymke)

Milwaukee's DJ Kelly started out as a mobile DJ almost 20 years ago until finding that his heart was really into playing music for the nightclub crowd. Kelly landed residencies at LaCage, Switch, and MONA's, all in Milwaukee. He currently holds a weekly residency at LaCage, Milwaukee's largest gay nightclub, as well as a monthly residency at Club 5 in Madison. He is a PUMP! staff member, helping out with sound, lighting and video, and he plays regularly at PUMP! on Sunday nights at Decibel.



**7:30 p.m.**

**Rainbow Stage**

**Miss Diva Latina PrideFest 2010**

Milwaukee, Wisconsin

Pageant



**9 p.m. -10 p.m.**

**Milwaukee Gay Arts Center**

**Arts & Culture Stage**

**THE FIRKUS CIRKUS**

Milwaukee, Wisconsin

Art/Culture

Fresh out of his Junior year of college, Brian Firkus is thrilled to be doing something at PrideFest besides just eating. After last summer's successful release of debut album "Greener," Brian and his partner Matthew Walton have appeared at several venues in the city. Brian and Matt return to the stage with a new direction reflecting personal and artistic growth. Brian's drag performances, unique subject matter, and on-stage antics set him apart from the sea of "guys with guitars."



**9 p.m. Rainbow Stage**

**Random Order**

Toronto, Canada

Pop/Rock [www.randomorder.ca](http://www.randomorder.ca)

Random Order is an LGBT gender bending ska-liscious, funkadelic band whose music will start you chair dancing and eventually have you skanking and shuffling across the floor. You will have no choice but to submit to the moving of your



**7 p.m. - 8 p.m. DJ JOHN MURGES**

Chicago, Illinois DJ /Dance

[www.myspace.com/djohnmurges](http://www.myspace.com/djohnmurges)

John Murges has played and held residencies at some of Milwaukee's largest and well-known clubs, numerous bars and restaurants, and special events. He currently holds a monthly residency at Mary's Attic, in Chicago's Andersonville neighborhood. For six years John was the resident DJ at one of Chicago's largest Halloween parties; and in 2005 played at Excalibur Nightclub, where he was a participant in the Fireball DJ Showcase. He's opened for the Pet Shop Boys & B-52's, along with nationally known DJs Andy Caldwell, Joe Gauthreaux, and Tony Moran.



**8 p.m. - 12 a.m. DJ RALPHI ROSARIO**

Chicago, Illinois

DJ /Dance [www.ralphirosario.com](http://www.ralphirosario.com)

Producer Ralphi Rosario is known for his outstanding talents in the remix production/dance music genre. His credits including remixes for pop music performers, movies & TV shows. He continues his remix magic for most major artists, as well as produce Dance music & spin music for the masses, globally.



**10 p.m. VASSY**

Los Angeles, CA DJ /Dance

[www.myspace.com/vassymusic](http://www.myspace.com/vassymusic)

This Australian born beauty was raised in the tropics and has been singing since the tender age of 3. With exotic features stemming from her Mediterranean heritage, this starlet on the rise is anything but predictable. Vassy's unique sound, style and energy come from a melting pot of influences and experiences as an international recording artist. Vassy is a singer/songwriter who's written songs for other artists as well as hit television shows and film projects.



body....they are a tight knit unit of international first class performers, guaranteed to pull you into that horn-blowing-bass-thumping-rawk-vocals-ska-rhythms-full-of-energy groove, and not let go until well after they've left the stage.

**10 p.m.**

**Rainbow Stage**

**The Moves**

Chicago, Illinois

Pop/Rock

THE MOVES are a three piece rock outfit formed in April 2007. A little glam, a little punk, a little indie, the group is unashamed to use the "pop" moniker to describe their catchy brand of Midwestern rock 'n' roll. The addition of electronic strings, synths and keys round out their penetrating pop sound.

[www.facebook.com/themoveschicago](http://www.facebook.com/themoveschicago)



**11 p.m.**

**Rainbow Stage**

**Brew City Bombshells**

Burlesque

Milwaukee, Wisconsin

Drag/Burlesque

The Brew City Bombshells Burlesque features enticing dancers, an award winning vocalist, an expert belly dancer, hilarious comedied performers, theatre professionals, and more. The Bombshells have performed at clubs and festivals across the country, and locally at various venues in Bay View and Riverwest. In addition to club performances the troupe also provides entertainment for corporate events, private parties, and teaches burlesque dance.

[www.brewcitybombshellsburlesque.com](http://www.brewcitybombshellsburlesque.com)





## PRIDEFEST 2010 FRIDAY HEADLINE SHOW

9 p.m. HEADLINE SHOW

Miller Lite Main Stage

Viewer discretion advised for adult language.

Headline Show Hosted by Mimi Imfurst

New York City, New York

Drag [www.mimiimfurst.com](http://www.mimiimfurst.com)

Mimi Imfurst is one of New York City's most outrageous, controversial, and hysterical night life personalities. She has performed in bars, dance clubs, cruise ships, on television, film and even on an airplane. She hosts weekly shows in New York City and Philadelphia. She is also a columnist for Odyssey Magazine, and can assure you she never sleeps.



MISS FOOZIE

Chicago, Illinois

Drag Personality [www.missfoozie.com](http://www.missfoozie.com)

Miss Fozzie returns to PrideFest for the fifth appearance as a genuine purveyor of good cheer; Miss Fozzie has hosted events at a number of venues, including charity functions, outdoor festivals, variety shows, bingo nights, and theme nightclub parties. Parlaying her local popularity into national appeal, Miss Fozzie has made friends coast to coast and caught the attention of many celebrities. With her world famous greeting "Hello Pineapples!" and loving heart bigger than her hair, it's impossible to imagine Chicago without Miss Fozzie.

Derrick Barry as Britney Spears

Las Vegas, Nevada

Tribute [www.derrickbritney.com](http://www.derrickbritney.com)

Cameo appearance with Britney Spears on NBC's 'The Tonight Show with Jay Leno.' Featured on Britney Spears' Official Website and YouTube. Top 40 Finalist on NBC's 'America's Got Talent'. Competed on ABC's 'The Next Best Thing'. The youngest cast member in the 23 year history of 'An Evening at La Caze' at the Riviera Hotel & Casino on the Las Vegas Strip.



Amy & Freddy

Chicago, Illinois

Music/Comedy [www.amyfreddy.com](http://www.amyfreddy.com)

Amy & Freddy have captivated audiences with their one-of-a-kind wit and musical prowess for over 15 years, gracing the stage of cities coast to coast and overseas. Amy's beautiful voice, edgy humor and quick wit, combined with Freddy's impeccable musical arrangements and sly repartee, create an evening of the most enjoyable and unforgettable entertainment.



KATHY GRIFFIN

Chicago, Illinois Comedy

[www.kathygriffin.com](http://www.kathygriffin.com)

For PrideFest organizers, once just isn't enough, especially when it comes to the amazingly funny, frequently controversial, and unashamedly self-promoting Kathy Griffin. Apparently she agrees, and has granted PrideFest exclusivity in the Midwest Region as the go-to stop on her spring 2010 tour.

Griffin, an outspoken supporter for LGBT rights, including same-sex marriage, protested against Prop 8, and volunteered for the LA Gay and Lesbian Center's "Vote for Equality" campaign. She also has been a long-time supporter of the Aid for AIDS annual fundraiser, Best in Drag Show in Los Angeles, and hosted the opening of the show for more than five years.

After first gaining recognition for several appearances on the comedy series Seinfeld and NBC sitcom Suddenly Susan, Chicago native Kathy Griffin has added countless voice-over works, television appearances and film roles to her resume. She found her niche as a stand up comedienne with the 1998 HBO One-Hour Special, "A Hot Cup of Talk".

For the last several years, she has produced and starred in the Emmy-winning Bravo reality show hit Kathy Griffin: My Life on the D-List. She has also worked as a red carpet commentator and participates in a New Year's Eve special with Anderson Cooper. Griffin has received Grammy nods for Best Comedy Album in both 2008 and 2009, and became a national best seller for her 2009 autobiography, Official Book Club Selection.

Her style and favorite celebrity topics—like plastic surgery, Scientology, drunkenness, substance abuse, snooty attitudes, eating disorders, and stars' disputed sexual orientations—are rumored to be the root of a number of controversies. Some of these controversies have had her banned from several talk shows. PrideFest, however, isn't afraid.



Sponsored by:



Otep

Los Angeles, California

Hard Rock

[www.myspace.com/otep](http://www.myspace.com/otep)

Otep has sold more than 500,000 records worldwide during their quest to tackle issues many others refuse to venture near. Otep has been converting the masses with their unique fusion of genres and exhilarating live show. When asked to describe their art, front woman Otep Shamaya explains, "Our music is a protest against the senseless constraints that reduce 'existence' into an inconceivable Pantheon of sterile hand-puppets and head-nodding yesh-bots. Our passion is to prove life's intensity is still intact."



Jade and the Gifted Souls

Chicago, Illinois

Drag

[www.myspace.com/jadechicago](http://www.myspace.com/jadechicago)

Jade, 26, is a professional female impersonator who has performed in many clubs throughout the Midwest. Jade has been thrust into international spotlight thanks to her appearance on Season 1 of Vh1 and Logo's Reality-TV show RuPaul's Drag Race. Jade is currently on tour throughout the US, Central and South America. She is also working on her music and film career.



SAGE/ Milwaukee

Senior Action in a Gay Environment



SAGE/Milwaukee  
1845 North Farwell, Ste. 220  
Milwaukee, WI 53202

PHONE: 414-224-0517

FAX: 414-487-0432

email@sagemilwaukee.org  
<http://www.sagemilwaukee.org/>

Discover  
the chiropractic  
experience for  
your pain relief.

Call 414-271-1717  
now to schedule your  
free consultation & exam (\$102 value!)

TWC  
THIRD WARD CHIROPRACTIC, S.C.



Dr. James C. Neuber, D.C.  
Chiropractor  
150 N. Jefferson St.  
Milwaukee, WI 53202  
414.271.1717  
[www.thirdwardchiro.com](http://www.thirdwardchiro.com)



# BOOM

**Boom is a Proud Sponsor of the  
Milwaukee Pride Parade  
Watch the Pride Parade  
on Sunday in front  
of our bars.**



**Beer Bust  
during the Parade.**

## **Come Play With Us Where Buddies Meet Buddies!**

### **Daily Specials:**

**Mon.** 2-4-1 Taps of Beer.

**Tues.** \$2 Rail Drinks All Night.

**Wed.** Balls to the Wall!

**Thurs.** 2-4-1 Pinnacle Flavored Vodka Cocktails.

**Fri.** Beer Bust 5-9pm Show Tunes in The ROOM with KV 6:30-9:00pm.

**Sat.** Beer Bust 2-6pm & 2-4-1 Pinnacle Cocktails with Shawn.

**Sun.** Beer Bust 2-6pm Plus Grab a Wiener with Lance.



**Open Mon.- Fri. 5pm with 2-4-1 cocktails 5-8pm  
Saturday & Sunday Open at 2pm**

**2 Great Bars 1 Location**

**Pool Tables - Darts - Games - Pizza - Patio**

**625 S. 2nd St. Milwaukee (414) 277-5040**

**THE  
ROOM**  
Perversion  
With A Touch Of Class



# ARCW MEDICAL CENTER

**Wisconsin's Largest Provider of HIV Health Care**



John Fangman, MD



Christine Hogan, MD



Sharon O'Dwyer, APNP



Jurg Oggenfuss, APNP



Winsome Pantan, APRN-BC



Kevin Roeder, PhD



Tammy Beran, PhD

**The ARCW Medical Center is at the forefront of HIV health care.** Our physicians, dentists and mental health therapists offer the most advanced treatment plans with state-of-the-art technology in a patient-friendly environment. They are dedicated to helping you understand your treatment options so you receive the care that is best for you. Patients may also receive legal services, housing assistance, nutritious food and case management from the comprehensive social services programs at ARCW.



Nicole Martin, DDS



Ajama Giscombe, DDS

## MEDICAL CLINIC

- Complete medical management of HIV disease
- Treatment of opportunistic infections
- Prescription of HIV medications
- Treatment of general health conditions
- Immunizations
- STD diagnosis and treatment

## BEHAVIORAL HEALTH & WELLNESS CLINIC

- Screening & diagnosis of mental health conditions
- Individual and group therapy
- Couples therapy
- Crisis stabilization
- Drug counseling & treatment

## DENTAL CLINIC

- Comprehensive preventive & restorative care
- Cleanings & oral hygiene guidance
- Fillings, crowns, bridges & dentures
- Root canal therapy
- Scalings & root planing
- Screening for oral cancer



Call for an appointment: (414) 223-6800 or 800-359-9272 extension 6800



## PRIDEFEST 2010 SATURDAY STAGE LINEUP

**Saturday, June 12 12 p.m.**

### Miller Lite Main Stage

#### Tret Fure

Madison, WI

Folk Rock

<http://www.tretfure.com>



Tret Fure's career spans 4 decades. By age 20, she was in LA performing as guitarist and vocalist for Spencer Davis, touring with him and penning the single for his album "Mousetrap". She went on to record her own album in 1973 on MCA/Uni Records, with the late Lowell George of Little Feat as her producer. With the success of that release, she opened for such bands as Yes, Poco, and the J Geils Band. Besides releasing 12 recordings, Fure markets of her own line of clothing named after her popular song "Tomboy girl". In addition, she is co-chair of the New Harvest Foundation, an organization that channels charitable contributions exclusively to organizations working to promote GLBT rights, services, culture and community development in South-Central Wisconsin.

**12 p.m. Dance Pavilion**

### Clifton Roy & Folkstringer

Dekalb, Illinois

Americana

[www.myspace.com/cliftonroy](http://www.myspace.com/cliftonroy)

Clifton Roy & Folkstringer are a five-piece band complete with vocals, acoustic guitar, upright bass, mandolin and percussion. CR&F have infused bluegrass, blues and country into a strong roots foundation.



**12 p.m. Rainbow Stage**

### Christopher Dallman

Los Angeles, California Folk Rock

[www.chrisdallman.com](http://www.chrisdallman.com)

Singer/songwriter Christopher Dallman has toured colleges, clubs, and theaters in the US and overseas, sharing the stage with artists such as Amos Lee, Ellis Paul, Casey

Stratton, and Ben Lee. Currently on tour in the United States, Christopher is an intense live performer, electrifying his audience with lyrics that inspire and melodies that haunt yet uplift.

**12 p.m. Pridefest Youth Village Come Out (& Play!)**

R U 14-24 yrs old? Ready for fun? Come to the Youth Village and check it out! Make a shirt ... dunk a PQ staff person...AND win prizes!!!



**12:30 p.m. Children's Stage**

### Sky Hunter's Bird's of Prey

Schlitz Audubon Nature Center

Beak & Talons Show

Which Bird has silent flight? What is the fastest animal on earth? Join us in comparing Falcons, Hawks and Owls up close while exploring their unique adaptations. This is an engaging and educational experience for all ages. See more information at [www.sanc.org](http://www.sanc.org).

**1 p.m. Miller Lite Main Stage**

### Pulsation Band <http://www.pulsationband.com>

Chicago, IL Cover Band



Pulsation is one of, if not THE, hottest all-female bands of the mid-west. Founded almost two decades ago, this high-energy group has racked up an impressive performance resume as well as a fiercely devoted fan-base. From upbeat disco/funk music from the 70's to the energetic beats of today's hip/hop, pop and alternative, the dynamic women of Pulsation deliver a memorable experience you won't soon forget.

**1 p.m.**

### Stonewall Stage

#### Inter-Generational Dialogue

Educational

Bridging the gap between generations, this dialogue will open doors for individuals to see the world through the eyes of those who have been through life and just entering it.

**1 p.m. Dance Pavilion**

### Chicago Boi Toiz -

Michael Jackson Tribute

Chicago, Illinois Drag

The popular Chi-Town group performs a tribute to the late great Michael Jackson as only the LGBT community can.



**1:15 p.m. - 2 p.m. Health and Wellness Area**

Pilates Demonstration (Jan Singer Instructor)

**1:30 p.m. Rainbow Stage**

### Mama's Black Sheep

Baltimore, Maryland

Blues

[www.mamasblacksheep.com](http://www.mamasblacksheep.com)

If you take one guitar, a bunch of drums, two amazing voices, a dash of humor, a touch of love, and some outrageously strong musicianship mix 'em all together and stir you've got Mama's Black Sheep. The power pop duo consists of singer-songwriters Ashland Miller (guitar/vocals) and Laura Cerulli (drums/vocals). From festivals, to clubs, to the most intimate private parties, Mama's Black Sheep is sure to deliver absolute entertainment for any crowd.



# KRUZ



354 E National Ave (414) 272-KRUZ

OPEN DAILY 3:00 PM - CLOSE



## PRIDEFEST 2010 SATURDAY STAGE LINEUP

### 2 p.m. Stonewall Stage

#### Alliance High School Graduation

Ever since the Alliance High School opened its doors, it has been a safe haven for teens who feel unwelcomed and unaccepted in narrow-minded schools. Witness the graduation of this year's ground-breaking class.

### 2 p.m. Miller Lite Main Stage

#### Lachi

Brooklyn, New York  
Rock



Born Melissa Ulachi Ulanma Offoha and known to friends and fans as Lachi, this Brooklyn-based lyricist lets you into her unique world, at times evoking Joni and others Alanis. Still, Lachi is carving out her own name to remember. She is also legally blind. Two personal attributes that make Lachi's catchy songs so memorable. She says the things we're thinking and feeling and she says them from the perspective of someone who has overcome. Lachi's soaring signature tune "We Can Fly" is an introduction to the memorable songbook of this complex emerging jazz-turned-rock singer. "No one can do what we do. We can fly," she sings. Referring to herself as "visually empowered" and so she is.

### 2 p.m. Children's Stage

#### The Island Kids Show with Papa Michael and Friends

[www.drakemusic.com](http://www.drakemusic.com)

Michael makes it look so easy. Small venue or in-concert performing with one of his larger bands – he is fascinating and internationally recognized. Limbo contests, conga lines, sing-alongs, shakers for the audience, and (if you dare!) hula-hoop contests! Or just enjoy great music!



### 2 p.m. Dance Pavilion Chicago Gay Men's Chorus

Chicago, Illinois Choral [www.cgmc.org](http://www.cgmc.org)



The Chicago Gay Men's Chorus (CGMC) has been an integral part of Chicago's cultural and gay communities since 1983. For nearly 30 years, they entertained audiences across the continent with innovative musical programming exploring everything from love to politics to the sometimes fabulous, sometimes challenging world of being gay—often all at the same time.

### 2:15 p.m. - 3 p.m.

#### Health and Wellness Area Reiki Demonstration

### 2:45 p.m. Rainbow Stage

#### Anna Gutmanis

Toronto, Canada Pop

[www.annagutmanis.com](http://www.annagutmanis.com)

Anna Gutmanis, a singer, songwriter and keyboardist, entwines her brave, edgy lyrics with deep, blues-style vocals. Anna is a longstanding musician on the Canadian music scene and a hit performer internationally as well.



### 3 p.m. Miller Lite Main Stage House of Winehouse

Chicago, Illinois [www.houseofwinehouse.com](http://www.houseofwinehouse.com)

Tribute/Pop (see Friday description)

### 3 p.m. Dance Pavilion Blue Ribbon Glee Club

Chicago, Illinois [www.blueribbongleeclub.org](http://www.blueribbongleeclub.org) Punk/Glee



What started as some friends drinking Pabst & singing songs in an attic is now Blue Ribbon Glee Club: Chicago's only A Capella punk rock choir! About 30 boys & girls sing their favorite punk, indie, & rock 'n' roll jams for your listening pleasure. Sing along!

### 3:15 p.m. - 4 p.m. Health & Wellness Area NIA (Exercise)

### 3:30 p.m. Stonewall Stage That hits the spot! G-Spot & P-Spot Play Educational

### 3:30 p.m. Children's Stage

#### The Figureheads

[www.figureheadsinc.org](http://www.figureheadsinc.org)

The Figureheads is an award-winning musical act turned non-profit organization using original positive hip-hop music to engage youth and educators, from pre-kindergarten through high-school, in order to develop critical thinking and collaborative skills that result in a greater desire to learn and relate.



# Diwa

## PLUMBING

Quality is not an act  
It's a habit. **Pride Guide Discount  
10% off your  
next service call!**

**FULL SERVICE PLUMBING CONTRACTOR  
COMMERCIAL & RESIDENTIAL  
NEW CONSTRUCTION AND REMODELING  
SERVICE, REPAIR, INSPECTIONS  
AND CODE CORRECTIONS**

**Phone: 414.332.2336**

**24 Hour Service Request: 1.866.221.6247**

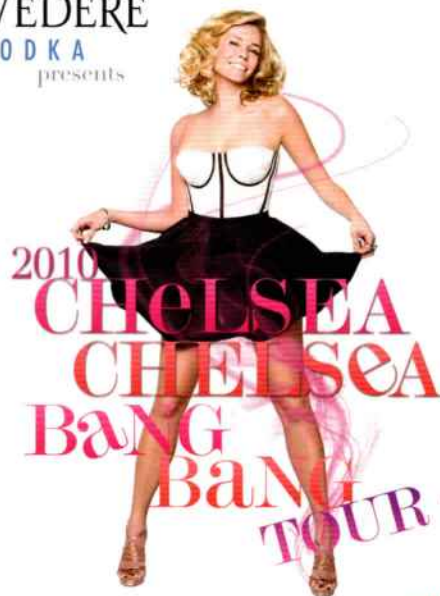
**Chiquita@divaplumbing.com**

[www.DivaPlumbing.com](http://www.DivaPlumbing.com)



EBE/MBE/WBE/DBE/WHEDA/Service Disabled Veteran

## BELVEDERE VODKA presents



with special guest



**CHRIS FRANCHOLA**

**FRIDAY,  
NOVEMBER 5** **THE MILWAUKEE  
THEATRE**

**TICKETS ON SALE NOW!**



Presale Access  
for Cardmembers  
[citi.com/venues](http://citi.com/venues)

**BUY  
TICKETS  
AT**



**BOX OFFICE • CHARGE BY PHONE: 800-745-3000**

All dates, acts and ticket prices subject to change without notice.  
Ticket prices subject to applicable fees.

\*New York Times  
Bestselling author  
The Lifetime New York Times  
Best Book of 2009  
Available Nov



DRINK RESPONSIBLY

Belvedere is a quality choice. Drinking responsibly is too.

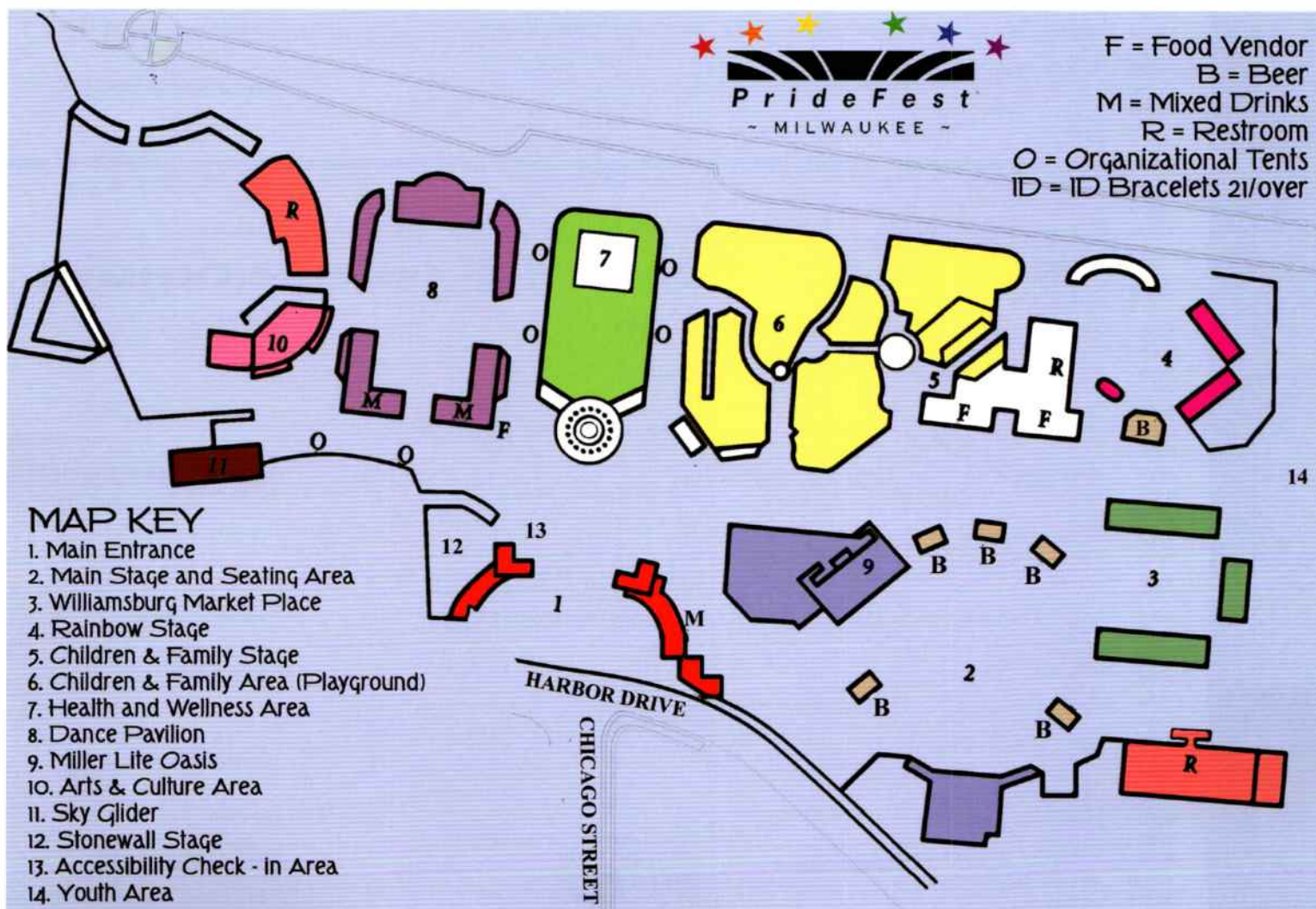


# CENTER PULL OUT SECTION - FRIDAY STAGE SCHEDULE

FRIDAY JUNE 11, 2010

3:00 p.m-Midnight

TIME	Miller Lite Main Stage	Dance Pavilion	Rainbow Stage	Stonewall Stage	Health & Wellness Stage	Children & Family / Milwaukee Gay Arts Center Stage	Youth Stage
3:00	Pauline Pisano	KatieBeth	Joe Richter				
4:00							
4:15	Sonia & disappear fear	Truth in Fiction	Aiden James				
4:30							
5:00				Come Again: Enhancing your Orgasm			
5:15		One Lone Car	Mr. And Miss PrideFest 2010 Pageant				
5:30	Super Satellite						
6:00		Pump! Presents: "Cyon in Wonderland" with your host, CYON FLARE		Interfaith Prayer Service		Pink Champagne reading	
6:30	PrideFest 2010 Opening Ceremony	DJ Kelly (6p.m.)					
7:00		DJ John Murges					
7:30	House of Winehouse		Miss. Diva Latina Pridefest 2010			The Feast of Isis	
8:00		DJ RALPHI ROSARIO					
8:30							
9:00	Headline Show		Random Order			The Firkus Cirkus	
9:30	9 p.m. - Close						
10:00	Featuring: KATHY GRIFFIN	VASSY	The Moves				
10:30	Host: Mimi Imfurst	Plus special effects and appearances by:					
11:00	with: Miss Foozie, Derek Barry as Britney Spears, Amy & Freddy, Otep, Jade & the Gifted Souls	Lasersonics, VJ Brye, Snow Fire, spHERE and NOW, Hoop D-Lite	Brew City Bombshells Burlesque				
11:30							





# CENTER PULL OUT SECTION



SATURDAY JUNE 12

TIME	Miller Lite Main Stage	Dance Pavilion	Rainbow Stage
12:00	Tret Fure	Clifton Roy & Folkstinger	Christopher Dallman
12:15			
12:30			
1:00	Pulsation Band	Chicago Boi Toiz	
1:15			
1:30			Mama's Black Sheep
2:00	Lachi	Chicago Gay Men's Chorus	
2:15			
2:30			
2:45			Anna Gutmanis
3:00	House of Winehouse	Blue Ribbon Glee Club	
3:15			
3:30			
4:00	GSX	Windy City Beauties	<b>Fetish &amp; Fantasy 2010 presented International Mr Leather</b>
4:15			
4:30			
5:00	Blame Sally		
5:15		The Shondes	Richard Cortez
5:30			
6:00	Rachael Sage	<b>PUMPI PRESENTS: "Cyon in Wonderland" with your host, CYON FLARE</b>	
6:30		DJ Cody Domino (6p.m.)	Dinah Thorpe
7:00	Dr. Draw	DJ Multidimensional Fortitude	
7:30			
7:45			Chris Canas Blues Revolution
8:00		<b>SAMWELL</b>	
8:15	<b>LENA KATINA FROM T.A.T.U.</b>	<b>DJ PETER PRESTA</b>	
8:30			Ellis (8:50p.m.)
9:00		Plus special effects and appearances by:	
9:30	<b>FIREWORKS!</b>	<b>Laseronics, VJ Brye, Snow Fire, spHERE</b>	<b>FIREWORKS!</b>
10:00	<b>HEADLINE SHOW 10 p.m. - close</b>	<b>and NOW, Hoop D-Lite</b>	The Heat Birds
10:30	<b>Featuring: PATTI LABELLE</b>		
11:00		<b>SNAP!</b>	<b>MELISSA FERRICK</b>
11:30	<b>Host: Bruce Villanch with: Rose Jang, Roslyn Kind, Charice</b>		

SUNDAY JUNE 13

TIME	Miller Lite Main Stage	Dance Pavilion	Rainbow Stage
11:00			
12:00	The Banana Convention	The New Loud	Brett Every
12:15			
12:30	<b>SUNDAY JUNE 13 11am-MIDNIGHT</b>		
1:00			
2:15	Far From Falling		Martine Locke
2:30		Todd Alsup	
3:00			
3:15	Bridget Lyons		The Che Arthur Three
3:30		Jet Phynx (3:40pm)	
4:00			
4:15	Sean Wiggins		Girie-Q's Biggest Gayest Show Ever
4:30		Shunda K (of Yo Majesty)	
5:00			
5:15	Anomie Belle		Mike Rickard
5:30			
6:00		Milwaukee Pride Parade Awards <b>PUMPI PRESENTS: "Cyon in Wonderland" with your host, CYON FLARE</b>	
6:15	Ronnie Nyles & Tallulah Who	<b>DJ Daniel Borrero (6:00pm)</b>	Nicole Reynolds
6:30			
7:00			
7:15			Scott Free
7:30	Katie Todd		
7:45		<b>JEFFREE STAR</b>	
8:00			
8:15			London Bridaez
8:30			
9:00	<b>HEADLINE SHOW</b>		
9:15	<b>9 p.m. - Close</b>		<b>SAGE4</b>
9:30		<b>Blood on The Dance Floor</b>	
9:45	<b>Featuring: JOAN RIVERS</b>	<b>AMANDA LEPORE</b>	
10:00	<b>Host: Robert Verdi</b>	<b>KACI BATTAGLIA</b>	
10:30	<b>with:</b>	<b>DJ Jerry Griffith</b>	<b>A Queen's Deadly Sin- Wisconsin D</b>
11:00	<b>the Glamazons, the Joans</b>	Plus special effects and appearances by:	
11:30		<b>Laseronics, VJ Brye, Snow Fire, spHERE</b>	



# SATURDAY & SUNDAY STAGE SCHEDULE

Stonewall Stage	Health & Wellness Stage	Children & Family/ Milwaukee Gay Arts Center Stage	Youth Stage
<b>SATURDAY JUNE 12 NOON-MIDNIGHT</b>			
			Come Out & Play -
Inter-Generational Dialogue	Pilates Demonstration	Sky Hunter's Birds of Prey	
Alliance High School Graduation	Reiki Demonstration	Michael Drake and the Island Kids Show	
That Hits the Spot! G-Spot & P-Spot Play	NIA (Exercise)	The Figureheads	
	Eden's Market Raw Foods Demonstration		
S(t)AGE Struck Players	Shoreline/Milwaukee Line Dance Demo	Women's Voices of Milwaukee	
		<b>MGAC STAGE</b>	Walk it Out
		Sister Mary Ignatius Explains it All for You	
		The Feast of Isis	
<b>FIREWORKS!</b>	<b>FIREWORKS!</b>	The Firkus Circus <b>FIREWORKS!</b>	
Stonewall Stage	Health & Wellness Stage	Children & Family/ Milwaukee Gay Arts Center Stage	Youth Stage
PrideFest Church Service			Come Out & Play
	Milwaukee LGBT Center: Breast Health		
S(t)AGE Struck Players	Tamarind Tribal Belly Dance		
Private Event	NIA (Exercise)	Magic of Brian Holt	
	Eden's Market Raw Foods Demonstration		
Celebration of Our Relationship		Growing a Family Workshop	
			See 'N B Scene
		The Vagina Monologues	
		The Feast of Isis	
		The Firkus Circus	



# THE AIDS MEMORIAL QUILT JUNE 8-20, 2010



Photo courtesy of The NAMES Project Foundation | AIDS Memorial Quilt

**HONOR THE LIVES OF THOSE LOST TO AIDS.** Nine specially selected quilts on view at the Milwaukee Art Museum show the contributions of fashion designers Dolce & Gabbana, Versace, Ralph Lauren and Isaac Mizrahi, among others, to the largest community folk art project in the world. Also on view, the original quilt the AIDS Resource Center of Wisconsin designed in 1987.

**This special exhibition is open to the public; Museum admission is not required.**

*The Milwaukee Art Museum's presentation of the AIDS Memorial Quilt is supported by the Greater Milwaukee Foundation Johnson and Pabst LGBT Humanity Fund and the AIDS Resource Center of Wisconsin.*





# PRIDEFEST 2010 SATURDAY STAGE LINEUP

## 4 p.m. Miller Lite Main Stage GSX

New York, NY Rock  
[www.myspace.com/gsx](http://www.myspace.com/gsx)  
At the heart of GSX is rocker, Sarah Greenwood. Born in Switzerland to British transplants, Sarah started performing in various local productions at age 5. By 13, she had formed her first band. Known for its fiery live performances, GSX was a co-headliner at Reykjavik Gay Pride 2007, rocking a crowd of 50,000, opened for Joan Jett and The Blackhearts at CBGB's, and headlined Mondo Homo 2009 (Atlanta's Southern Queer Festival), amongst others. GSX has garnered high praise in both national and international press.



**4 p.m. Rainbow Stage  
Fetish & Fantasy 2010**  
Presented By  
International Mr. Leather  
Chicago, Illinois  
Educational/Pageant  
[www.imrl.com](http://www.imrl.com)

Join International Mr. Leather and the American Brotherhood Weekend (ABW) as they host this hour-long show featuring fantasies, parade of colors, fashion show and special guest speakers. Come and meet members of their creative teams, get a chance to meet titleholders, and win a weekend package to the 2011 event.

## 4 p.m. Dance Pavilion Windy City Beauties

Chicago, Illinois Drag  
Here they are again in full force! The Windy City Beauties are a fabulous bunch of phenoms from Chi-town and represent a wide variety of performing styles that can be found in their hometown. Ten Yaki, Saucey Firewater, Miss Truly Fabulous, Dita Ritz, and Miss Debbie Fox are revved up and raring to strut their stuff.



## 4:15 p.m. - 5 p.m. Health and Wellness Area Eden's Market Raw Foods Demonstration

## 5 p.m. Miller Lite Main Stage Blame Sally

Americana  
San Francisco, CA  
[www.blamesally.com](http://www.blamesally.com)  
A unique collective of four distinct voices and musical backgrounds, Blame Sally has forged a compelling and original sound that has earned the band the well-deserved reputation as "Bay Area phenomenon". Recently signing a five year mid-six figure record deal, the band's spirited, take-no-prisoners attitude is a welcome contrast to traditional folkie navel-gazing, and the band has the songs, chops and pipes to back up their tough talking, clear-minded folk rock. In May, 2009 the band released Night of 1000 Stars, produced by Grammy nominated producer, Lee Townsend.



## 5 p.m. Stonewall Stage S(t)AGE Struck Players

Milwaukee, WI Educational  
Life is but a stage and all the men and women merely players...and then there are S(t)age Struck Players who play in a totally different kind of way.



**5 p.m. Children's Stage  
Women's Voices of Milwaukee**  
"Callin' Out Around the World" is just one of the numbers Women's Voices Milwaukee will be performing. Mix that with a little something from Bob Dylan, Sarah McLachlan and Aretha Franklin and you'll want to take in both WVM shows! Women's Voices Milwaukee has a brand new beat with some new voices, a new director Lori Gilland and a new accompanist Stacy Ellens. Children, ages 1 to 101, are welcome!

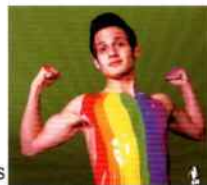
## 5:15 pm Dance Pavilion The Shondes

Brooklyn, New York Rock  
[www.shondes.com](http://www.shondes.com)  
The Shondes are a Brooklyn-based rock band that draws on classical, feminist punk, and Jewish musical traditions. They are known for an explosive, energetic live show and for connecting with their audiences at a visceral level.



## 5:15 p.m. Rainbow Stage Richard Cortez

Ft. Lauderdale, Florida Folk Rock  
[www.wollenbergrecords.com](http://www.wollenbergrecords.com)  
Richard spent the past two years gallivanting around gay bars performing and collecting hands-on experiences, turning his sharp wit and folk rock finesse onto life in gay bars. The award-winning singer-songwriter and gay rights activist has been folkin' the East Coast one busted guitar string at a time.



## 5:15 p.m. - 6 p.m. Health and Wellness Area Shoreline - Milwaukee Line dance demo

## 6 p.m. - Midnight Dance Pavilion PUMP! presents Cyon in Wonderland with your Mad Host: Cyon Flare Plus Special Effects and Appearances By: Laseronics, VJ Bryce, Snow Fire, spHERE and NOW, Hoop D-Lite

### 6 p.m. DJ CODY DOMINO

Madison, Wisconsin  
Cody Domino has been a DJ for 9 years. Music is a huge part of his life and always has been. He's spun in cities like Madison, Rockford, Milwaukee, Dubuque, Green Bay, for both clubs and pride events.



### 7 p.m. DJ Multidimensional Fortitude

Madison, Wisconsin  
[www.facebook.com/1DJMF](http://www.facebook.com/1DJMF)  
DJ Multidimensional Fortitude's extraordinary talents and showmanship are perhaps best appreciated during his live DJ set. Crowds have come to expect nothing but the best in mind-blowing sound, progressive rhythms and his signature on the spot remixes of some of today's hottest artist.

### 8 p.m. Samwell [www.myspace.com/samwellmusic](http://www.myspace.com/samwellmusic)

Chicago, Illinois Pop  
Trained in acting and dance at the University of North Carolina, Samwell made his way into theatre and touring companies until he moved to Chicago in 2001. Samwell came up with his "What What (In the Butt)" refrain a long time ago, but it went unused until a coworker overheard the catchy lyric and asked if Samwell would like to collaborate on some music. The rest is pop music history.



**5:30 p.m. Youth Stage Walk it Out**  
Join Project Q, youth development program of the Milwaukee LGBT Community Center, in strutting your stuff (if you are 14 - 24 years of age) or supporting our young people if you are no longer a "youth." Fun, frivolity and fantastic music guaranteed. The House of Monroe is sponsoring this benefit DANCE COMPETITION So come out and show us what you got!

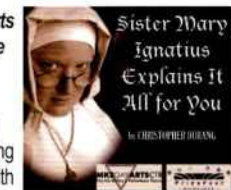
## 6 pm Miller Lite Main Stage Rachael Sage

New York, NY Art Pop  
[www.rachelsage.com](http://www.rachelsage.com)  
An innovative, improvisational keyboardist, this self-taught artist performs over 150 dates a year with her band The Sequins throughout North America, Europe and Asia. Sage, who has shared stages with Ani DiFranco, Melissa Ferrick, Colin Hay, Melissa Etheridge and Jill Sobule, among many others, was named one of the Top 100 Independent Artists of the Past 15 Years by Performing Songwriter magazine. Winner of 2 OUTMusic Awards in 2009. Her latest self-produced album is DELANCEY STREET, available on MPRESS Records.



## 6 p.m. Milwaukee Gay Arts Center Arts & Culture Stage by Christopher Durang Art/Culture

[www.milwaukeegayartscenter.org](http://www.milwaukeegayartscenter.org)  
Sister Mary Ignatius, a teaching nun who is much concerned with sin in all of its various forms, delivers a cautionary lecture to her charges. But when several of her former students turn up the picture darkens, along with Sister Mary's indignation.



## 8:15 p.m. - Midnight DJ Peter Presta

New York City, New York  
DJ/ Dance/House/Tribal  
[www.peterpresta.com](http://www.peterpresta.com)  
You most likely are familiar with DJ Peter Presta's hit "Totally Hooked" featuring Bonse. Peter toured the world with this song! Presta has a very large gay following, due to his amazing "Queer as Folk" record "Proud" featuring Heather Small.



Renowned for their work with SNAP! producers Luca Anzilotti & Michael Münzing have written more than one chapter in the history of dance music. Their international megahit "The Power" is not only one of the world's most played dance-tracks, but also the one that launched the "SNAP!-attack" 15 years ago, taking the world by storm and turning them into one of Europe's most successful producer teams.



# PRIDEFEST 2010 SATURDAY HEADLINE SHOW



## 6:30 p.m. Rainbow Stage Dinah Thorpe

Toronto, Canada *Electropop*  
[www.myspace.com/dinahthorpe](http://www.myspace.com/dinahthorpe)  
Dinah Thorpe burst onto the Toronto music scene in May 2008 with the release of her self-titled EP. Her full-length debut, *Truths and Other Stories*, was released in the fall of 2009. Her beats have induced fevers in dance clubs, while her silvery voice and sweet melodies have brought tears to folk clubs.

## 7 p.m. Miller Lite Main Stage Dr. Draw

Toronto, Canada *Pop Instrumental*  
[www.alchemyentertainment.ca](http://www.alchemyentertainment.ca)  
Whether opening for A-list acts like Bette Midler or Cyndi Lauper, sharing the stage with world-renowned Seal or playing luxury brand events like Chloé and Luis Vuitton, Dr. Draw inspires kudos wherever he plays.



7:30 - 8:45 pm *Milwaukee Gay Arts Center Arts & Culture Stage*  
**The Feast of Isis** [www.milwaukeebellydance.com](http://www.milwaukeebellydance.com)  
**Featuring Shaia Fahrid and Milwaukee Belly Dance**  
see Friday description

## 7:45 p.m. Rainbow Stage Chris Canas Blues Revolution

Ann Arbor, Michigan *Blues*  
[www.chriscanas.net](http://www.chriscanas.net)  
Singer, Songwriter, Lead Guitar and Comet player, Chris Canas, has a major Musical background. The Chris Canas Blues Revolution has played to standing room only crowds at numerous festivals and venues. Although trained in traditional jazz, Chris enjoys the soul stirrings of the "Blues" and loves to write lyrics and music that inspire. The Chris Canas Blues Revolution can be seen blazing a trail in the Metro Detroit area and beyond.



## 8:15 pm Miller Lite Main Stage Lena Katina from t.A.T.u. Moscow, Russia *Pop Rock*

[www.lena-katina.com](http://www.lena-katina.com) & [www.tatu.ru](http://www.tatu.ru)  
Having been in show business since the age of 8, Katina became a soloist in the famous children's band "Avenue" where she sang for 3 years. She entered the "Neposedy" (Naughty Kids) band at 12, and in 1999, at the age of 15, Katina joined fellow artist Yulia Volkova to form the music duo t.A.T.u. putting out hits such as *All the Things She Said*, *Not Gonna Get Us*, and *All About Us*. More than 5 million copies of the debut English album, *200 km/h in the Wrong Lane* sold, & the lead single, *All the Things She Said*, spent four consecutive weeks at #1 UK Singles Chart & reached #20 in the US Billboard Hot 100. In November of '08, t.A.T.u. was awarded Legend of MTV at the MTV Russia Music Awards 2008.



## 8:50 p.m. Rainbow Stage Ellis

[www.ellis-music.com](http://www.ellis-music.com)  
Minneapolis, Minnesota  
*Acoustic Pop*  
Ellis is a rising star in the folk music scene and continues to build attention at venues, colleges, and festivals throughout the country with heart-felt songs that reflect her sincere graciousness, vibrant nature, and contagious sense of humor. You'll quickly be drawn in by her warmth and real-life journeys as reflected in her songs.



9 - 10 p.m. *Milwaukee Gay Arts Center Arts & Culture Stage*  
**THE FIRKUS CIRKUS** See Friday description

9:30 pm **FIREWORKS** PrideFest was the first Pride Festival to have a fireworks show, and the tradition continues today!

## 10 p.m. Rainbow Stage The Heat Birds

Chicago, Illinois *Alternative Folk*  
[www.heatbirds.com](http://www.heatbirds.com)  
Heat Birds is an acoustic ensemble with an eclectic mix of vocal and musical styles. With instrumentation that is a hallmark of true Chicago Americana outfits, the Heat Birds incorporate clarinet, trombone, mandolin, ukulele, accordion, guitar, bass clarinet, percussion and upright bass into their performances.



## 10 p.m. HEADLINE SHOW Miller Lite Main Stage

Viewer discretion advised  
for adult language.



### Headline Show Hosted by...

#### Bruce Vilanch

West Hollywood, California  
*Comedy*  
[www.wegotbruce.com](http://www.wegotbruce.com)

Bruce Vilanch has written the last 21 Oscar shows and has backstage stories about every single one of them, starting some of the most famous names in the world. He has written the Grammys, Emmys and Tonys, in addition to many a beauty pageant; starred on Broadway for a year in *HAIRSPRAY*, sings and dances; was a Hollywood Square for six years, as well as being head writer; and he writes jokes every day for everybody else in the business and is willing to actually pilfer their material to make his audiences happy.

#### Rose Jang

Seoul, Korea *Pop Opera*  
[www.rosejang.com](http://www.rosejang.com)

Rose Jang is an internationally acclaimed award-winning classical crossover diva whose work runs the gamut from operatic arias to musical and classic pop songs. The first Korean to release an album comprising operatic arias as well as hit musical numbers, Rose reached number one on the domestic and international music charts with her performance of the song "Memory" from the musical "Cats."



#### Roslyn Kind

Beverly Hills, California *Pop*  
[www.roslynkind.com](http://www.roslynkind.com)

Roslyn's unique artistry is equally at home on stage, screen and disc. Roslyn Kind is a dynamic, multi-talented entertainer who has forged a successful career in all facets of entertainment from critically acclaimed recordings to sold-out performances on Broadway and in top concert venues and nightclubs the world over.



#### Charice

Manila, Philippines *Pop*  
[www.charicemusic.com](http://www.charicemusic.com)

On first glance, Charice looks like any other teenager: pretty, petite and filled with nonstop energy. But when the sweet-faced 18-year old opens her mouth to sing - with a profound, rich and soaring 10 decibel voice from every inch of her 5 feet 1 inch body - the audience quite literally gasps. Charice's first album is in the top 10 of the Billboard 200.



## 11 pm Rainbow Stage Melissa Ferrick

Boston, Massachusetts *Folk Rock*  
[www.melissaferrick.com](http://www.melissaferrick.com)  
Singer/songwriter Melissa Ferrick emerged in 1994 as part of a group of new female alternative singer/ songwriters. Her major breakthrough arrived one night when she replaced Morrissey's opening act less than an hour before show time. Ferrick's performance impressed Morrissey and he invited her to open for him during the rest of the tour. The tour earned her a small cult following



## Patti LaBelle

Philadelphia, Pennsylvania  
*R&B, Soul* [www.pattilabelle.com](http://www.pattilabelle.com)



As one of contemporary music's living legends, Patti LaBelle has received many accolades, awards and accomplishments, and is constantly challenging herself creatively and artistically.

LaBelle has won two Grammy Awards, seven NAACP Image Awards, two American Music Awards and has three Emmy nominations. In addition, she has received honorary doctorate degrees from Boston's prestigious Berklee School of Music, Cambridge University and Drexel University, a star on The Hollywood Walk of and several various Lifetime Achievement awards. In 2007, she was presented with the GLAAD Excellence in Media Award in recognition of her strong support of full equality for the LGBT community and her work to raise awareness about HIV/AIDS.

This Philadelphia native has been a chart staple with over thirty charted singles including 1983's chart topper "If You Only Knew," the 1985 smash "New Attitude," a pop and R&B number one single "On My Own," (1986 duet with Michael McDonald,) and more recent hits like "Somebody Loves You Baby," "When You've Been Blessed," "The Right Kind Of Lover," and "When You Talk About Love." Her 1974 LaBelle mega-hit "Lady Marmalade" is still to this day, a staple in any Pride music mix. It was inducted into the Grammy Hall of Fame in 2003.

Whether she's singing full out on a love ballad or telling it like it is on one of her soaring songs she has become known for, Patti LaBelle will continue to deliver as only she can.

Sponsored by:





# LaCAGE NITECLUB

Milwaukee's Premier Gay Nightclub

Check us out on  
facebook

## HAPPY PRIDE MILWAUKEE!

**Friday 6/11/2010 LaCage Nite Club Pride kick off Party 10pm**  
**Montage Lounge Pride kick off show 11 pm**  
**Come see the newest addition to the LaCage Entertainment Complex!**  
**Saturday 6/12/2010 The Biggest Pride After Party starts at 10pm**  
**Special Show in Montage Lounge 11 pm**



Milwaukee's Cosmopolitan Video Bar  
Come relax with us! Fridays & Saturdays 10pm

## MONTAGE LOUNGE

### PRIDE WEEKEND HOURS

Montage opens daily at 6  
LaCage Fri & Sat 10pm, Sun Noon  
ETC Fri & Sat 10pm

**Sunday 6/13/2010 Join us for the Parade & After Pride Party!**

Enjoy Specialty Bloody Mary's made with Infused EFFEN Vodka  Open noon to 2 am!



Montage Lounge presents the  
**After Pride Party with Kaci Battaglia!**  
Kaci performs her hit single  
"Crazy Possessive" 11 pm

LaCage Entertainment Complex... Wisconsin's Multi-Level LGBT Complex & Premier Gay Nightclub!  
3 full service levels featuring 6 Great Bars, 2 Dance Floors, and the BEST dance music in town!

801 South Second Street 414-383-8330 [www.lacagemke.com](http://www.lacagemke.com)



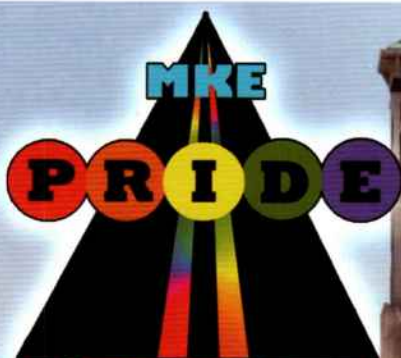
# AIDS WALK WISCONSIN

## Register Today!

Sunday, September 19

[aidswalkwis.org](http://aidswalkwis.org) or 1-800-348-WALK

**SIGN UP TODAY!** Visit us in the Pridefest Health & Wellness area



Join us on  
facebook  
and  
twitter

Milwaukee Pride Parade

**VOLUNTEERS NEEDED**

APPLICATIONS FOR PARADE UNITS ARE AVAILABLE ONLINE

[www.prideparademke.org](http://www.prideparademke.org)

**SUNDAY, JUNE 13 - 2 PM**

QUEST

BOOM

Avant-Garde®



## PRIDEFEST 2010 SUNDAY STAGE LINEUP

### Sunday, June 13 11 a.m. Stonewall Stage PrideFest Church Service

Back by popular demand, we will offer an inclusive Christian worship service before the festival opens on Sunday. The service will include readings from the Bible, Preaching and Holy Communion. Those attending the service will get into PrideFest free on Sunday. The Rev. Jeffrey Montoya, PrideFest Religious Activities Director will officiate along with other clergy.

### 12 p.m.

#### Miller Lite Main Stage The Banana Convention

Saginaw, Michigan  
Garage Rock  
Imagine The Presidents of the United States of America in a steel cage battle with No Doubt, and The B-52's are the special guest referee. This is what the high energy "Garage Pop" band, The Banana Convention, brings to the table, and that's what has been exciting audiences from Detroit to New York to Boston to Chicago entertained and coming back for more over the last 6 years. [www.thebananaconvention.com](http://www.thebananaconvention.com)



### 12 p.m. Dance Pavilion The New Loud

Milwaukee, Wisconsin  
Electro Punk  
[www.newloud.com](http://www.newloud.com)  
The New Loud stretches the mold of the traditional

punk band by incorporating electronic elements such as keyboards, sequences and synth drums; while retaining the essence of the protopunk archetype - raw energy, manic tempos and immediate lyrics. Originally formed in 2001 by Shane Olivo (guitar/vocals) and Radish Beat (drums/vocals), the band added Jessi Nakles (keyboard/vocals) in 2004 and has been playing regular shows and tours ever since.

### 12 p.m. Rainbow Stage Brett Every

Sydney, Australia Folk  
[www.brettevery.com](http://www.brettevery.com)  
All the way from Sydney Australia, singer/songwriter Brett Every is bringing his heartwarming, finger-tapping, eyebrow-raising songs about gay love, heartbreak and friendship to PrideFest. Highlights will be drawn from his first two albums, "Camping Out" and "Fairy Godmother's Gone to Vegas."



### 12 p.m. Pridefest Youth Village Come Out (& Play!)

Come back to the youth village! 12-5PM. Play games ... dunk a PQ staff person...AND win prizes!!

### 12:15 p.m. - 1 p.m. Health and Wellness Area Milwaukee LGBT Center: Breast Health

### 1 p.m. Stonewall Stage S(t)AGE Struck Players

Milwaukee, WI Educational  
Please see Saturday's description.

### 1:15 p.m.

#### Miller Lite Main Stage Stewed Tomatoes

Chicago, IL  
Punk Rock  
[www.stewedtomatoes.com](http://www.stewedtomatoes.com)  
Harmonic vocals, sexy riffs, make stewed tomatoes a meal you can't miss! Known for incredible live performances, hilarious banter and outrageous stage antics, Stewed Tomatoes is often shocking and always entertaining. They were recently awarded an OUT MUSIC AWARD for "Outstanding Rock Song of the Year" for their song Leather Daddy. And currently they have been adding their flavor to movie Sound Tracks such as Hannah Free.



### 1:15 p.m. Dance Pavilion Melissa Li

New York City, New York  
Pop Rock  
[www.myspace.com/melissalimusic](http://www.myspace.com/melissalimusic)  
For over a decade, Melissa Li has carved a name for herself as a passionate songwriter and performer. From getting her start in the subways and the community enclaves of Boston to playing to thousands at San Francisco Pride, Melissa's music career has been a non-stop, surprising journey.

### 1:15 p.m.

#### Rainbow Stage Lojo Russo

Davenport, Iowa  
Acoustic Rock  
[www.lojorusso.com](http://www.lojorusso.com)  
Lojo Russo is described as a songwriter with "a lot of lyrical power", a guitarist with "powerful playing" and a vocalist with "one hell of a voice". With raw energy Russo moves from sweet folk to roots rock without missing a beat. On stage she combines her sense of music with a sense of humor - sometimes outrageous, sometimes intense, always original.



### 1:15 p.m. - 2 p.m.

#### Health and Wellness Area Cream City Squares (Dance Demo)

### 1:30 p.m. Children's Stage Women's Voices of Milwaukee Please see Saturday's description.

### 2:15 p.m.

#### Miller Lite Main Stage Far From Falling

Minneapolis, Minnesota  
Alternative Rock  
[www.farfromfalling.com](http://www.farfromfalling.com)  
Collectively these 5 had opened for Blind Melon, Tiffany, Vince Neil of Motley Crue, Jody Watley, Marilyn Manson, Robin S, and many more national acts. As the hottest Rock group in Minneapolis, the newest FFF EP has been picked up by 30 Best Buy's and multiple songs are gaining huge radio play in the states of MN & WI. Far From Falling is looked at as one of the most nationally marketable bands in the Midwest, come find out why.



### 2:15 p.m.

#### Rainbow Stage Martine Locke

Perth, Australia  
Folk Rock  
[www.martinelocke.com](http://www.martinelocke.com)  
Martine Locke is an amazingly talented musician with the ability to craft songs that touch her listeners on many levels. She captivates the audience with her stories and humor, and invokes their deepest emotions with her powerful vocals, memorable melodies and mesmerizing style of guitar playing.



### 2:15 p.m. - 3 p.m. Health and Wellness Area Tamarind Tribal Belly Dance

### 2:30 p.m. Dance Pavilion Todd Alsop

New York City, New York  
Pop/Soul  
[www.toddalsup.com](http://www.toddalsup.com)  
Out and proud singer/songwriter Todd Alsop's vibrant, colorful and classic music celebrates universal themes. Todd just released his brand new self-titled album (available on iTunes) in April and the buzz continues to grow. He is a proud advocate for marriage equality, and is a regular presence and volunteer for worthy organizations such as GLAAD and Lifebeat - the Music Industry Fights AIDS.





Serving the Community Since 1985

## HUME LAW OFFICES

- Estate Planning • Family Matters
- Discounts and alternative payment plans available

**Kathleen E. Hume, Esq.**

**262.789.6845 • [HumeLaw@yahoo.com](mailto:HumeLaw@yahoo.com)**

**350 Bishops Way, Suite 204 • Brookfield, WI 53005**





## PRIDEFEST 2010 SUNDAY STAGE LINEUP

### 3 p.m. **Children's Stage** Magic of Brian Holt

[www.magicofbrianholt.com](http://www.magicofbrianholt.com)

Brian's reputation for "Upbeat Magic" is unprecedented. This can be seen in his stage show. In this show Brian will be performing many effects that top professionals perform in Las Vegas and on Cruise Ships. The audience will be amazed as borrowed objects appear in unusual and impossible locations, minds are read, and objects levitate. This is not just another magic show!

### 3:15 p.m. **Miller Lite Main Stage**

#### Bridget Lyons

Chicago, IL R & B / Soul

[www.myspace.com/bridget](http://www.myspace.com/bridget)

Bridget Lyons grew up playing the guitar in Chicago. Mentored by a slide blues guitarist, she was exposed to an incredible world of art and music at an early age and inspired by many Chicago blues legends including KoKo Taylor and Buddy Guy. Her songs are created from true stories, inspired by real life, and beg grace from honesty. During 2008 and 2009 Bridget toured the United States, playing festivals and music venues in 17 different states and releasing two albums. She has had 5 songs in 4 international films, and opened for major international artists including Brandy Norwood and The Flabbits. She performs mostly in the R&B and Soul genre.



### 3:15 p.m. **Rainbow Stage**

#### The Che Arthur Three

Chicago, IL

Punk Rock

[www.cheathur.com](http://www.cheathur.com)

The Che Arthur Three features former Atom Bomb Pocket Knife guitarist (and touring sound engineer for such bands as Silversun Pickups, Minus The Bear and Shellac) Che Arthur. 2009's "Like Revenge" is the third record of Arthur's material but the first in this band format.



### 3:15 p.m. - 4 p.m. **Health and Wellness Area**

NIA (Exercise)

### 3:30 p.m. **Stonewall Stage**

R. Jay and Angel's 2010 Rainbow Wedding Private event



### 3:40 p.m. **Dance Pavilion**

#### Jet Phynx

New York City, New York

Pop/Hip-Hop

[www.jetphynx.com](http://www.jetphynx.com)

Jet Phynx (pronounced FEE-nix) is an American singer, songwriter & performance artist. Jet

Phynx matches a keen eye for glam with an undeniable ear for popular sounds. Jet Phynx is the artist from 2020, styling today's world with high fashion pop music.



### 4:15 p.m.

#### Miller Lite Main Stage

#### Sean Wiggins

Los Angeles, CA

Country Rock

[www.seanwiggins.com](http://www.seanwiggins.com)

Wiggins is captivating, with a strong stage presence and

humorous story-telling between songs. She has shared the stage with Blues Traveler, Jill Sobule, Sophie B. Hawkins, Cyndi Lauper & more. She is an award winning songwriter, including Billboard's Song Contest, and she just released her 6th CD in Sept. '09. Sean also toured the US with the Hollywood production of, "Sordid Lives" written and directed by Del Shoes, and her music was featured in the Series on LOGO.

### 4:15 p.m. **Rainbow Stage**

#### Girlie-Q's Biggest Gayest Show Ever

Chicago, Illinois Burlesque

[www.girlieq.net](http://www.girlieq.net)

Girlie-Q is Chicago's first and only queer burlesque and variety troupe. In production since 2003 as one of the oldest and most prestigious burlesque companies in Chicago, Girlie-Q Productions features the edgiest burlesque, a stunning variety of dance and movement forms, live music, hilarious comedy, vaudeville, and variety performance in Chicago.



### 4:15 p.m. - 5 p.m. **Health and Wellness Area**

Eden's Market Raw Foods Demonstration

### 4:30 p.m. **Dance Pavilion**

#### Shunda K (of Yo Majesty)

Plant City, Florida

Hip-Hop

[www.shundak.com](http://www.shundak.com)

Hip-hop wonder woman known as

Shunda K is dedicated to "keepin' it movin'" at any cost. Shunda maintains a non-stop pace of collaborations in the studio and on-stage, logging time with producers and lyricists throughout the US and around the globe. Shunda K came to prominence as the down n' dirty, ruff n' ready, Lord and lady-loving original voice of Yo! Majesty (Domino Records) and spent much of 2009 launching a solo career by releasing two EPs with female French DJ Flore in the UK and a dizzying 42 original tracks.



### 4:30 p.m. **Children's Stage**

#### Growing a Family Workshop

[www.wirainbowfamilies.com](http://www.wirainbowfamilies.com)

Wisconsin Rainbow Families presents an interactive workshop in how an LGBT Family can be created. This will be a question and answer workshop with multiple different fami-



lies answering the questions that you have on how to grow your family. Bring your questions on Adoption, Surrogacy and Foster to Adopt. We have LGBT families to help you with your decisions. Come if you have information to share as well. This will be a great workshop for anyone who is thinking of growing their family. Find us on Facebook @ Wisconsin Rainbow Families.

### 5 p.m. **Stonewall Stage** Celebration of Our Relationship

Recognizing your relationship at the festival's beautiful lake-front location can help make your experience even more memorable. Clergy will lead a beautiful service of celebration and blessing. All couples will receive a certificate, flowers and partake in a wonderful cake (compliments of Simma's Bakery). Individual commitment ceremonies may also be scheduled throughout the day on Saturday and Sunday. Register online at [www.L-Q-G.org](http://www.L-Q-G.org) or at the Love of God Cathedral booth during the festival.

### 5:15 p.m.

#### Miller Lite Main Stage

#### Anomie Belle

Seattle, WA Electronic

[www.anomiebelle.com](http://www.anomiebelle.com)

Originally a classical violinist

and an active film composer, Anomie Belle writes sultry, introspective music by interweaving electronic and experimental elements with sensual down-tempo grooves, smoky vocals, electronic programming and layered strings. Anomie Belle's debut album, Sleeping Patterns, has received widespread media attention and radio play, and she has shared the stage with artists from Tricky to the Album Leaf, Kid Koala, Mr. Lif, Gustavo Santaolala's Bajofondo, The Heavy, and Little Dragon. Belle is currently working on her sophomore album, and also working on a new collaborative project with hip-hop emcee, Mr. Lif (Perceptionists), to be unveiled in 2010.



**Be Proud!**  
**Stand by your colors.**  
**Happy PrideFest 2010**

**CLUB**  
**Icon**



**Club ICON • 6305 120th Ave • Kenosha WI**  
**262-857-3240**  
**[www.club-icon.com](http://www.club-icon.com)**





### FRIDAY, JUNE 11

Stack'd Burger Bar  
170 S First Street (2nd Floor)  
with DJ Brett Locascio (Chicago)

### SATURDAY, JUNE 12

Stack'd Burger Bar  
170 S First Street (2nd Floor)  
with DJ Ron G (Chicago)

### SUNDAY, JUNE 13

Decibel  
1905 E North Avenue  
with DJ Dirty Cash (Chicago)  
DJ Jerry Griffith (Kansas City)  
& Guest Celebrities

BEGINNING AT 10 PM EACH NIGHT



**PUMP!** **STACK'D** **decibel**

## Celebrate Pride Every Week!



### Mixing Big, Hot, Sweaty Sets Every Sunday Night!

**PUMP!** Sundays feature Progressive, Vocal, & Disco  
House Music with DJ John Murgas & other Local &  
Regional DJ's.

\$5 Bacardi & Stoli Mixers

\$5 Specialty Martinis

Decibel Nightclub

9:00 PM | No Cover | 21+ | ID Required  
1905 E North Avenue, 414.272.3337



### Unique—Uplifting Nightlife Every Tuesday Night!

**PUMP!** Tuesdays feature Progressive, Vocal, & Disco  
House Music with DJ John Murgas & other Local &  
Regional DJ's.

\$3 Tap Beers & \$5 Tall Skyy Mixers

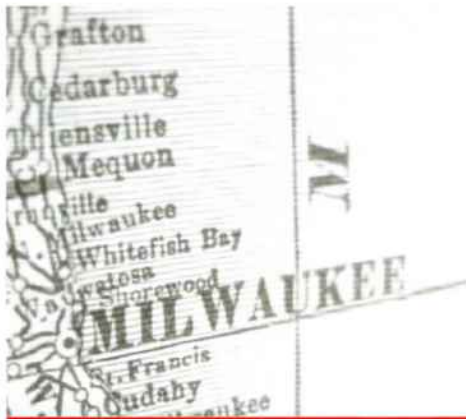
\$2.50 Half Slices of Pizza, Kitchen open until Midnight.

Crisp Pizzabar

9:00 PM | No Cover | 21+ | ID Required  
1323 E Brady Street, 262.271.5534







# Hybrid lounge

**707 East Brady**

Ride the Shuttle from Hybrid Lounge to Pride every hour on the hour. Stops at participating bars.

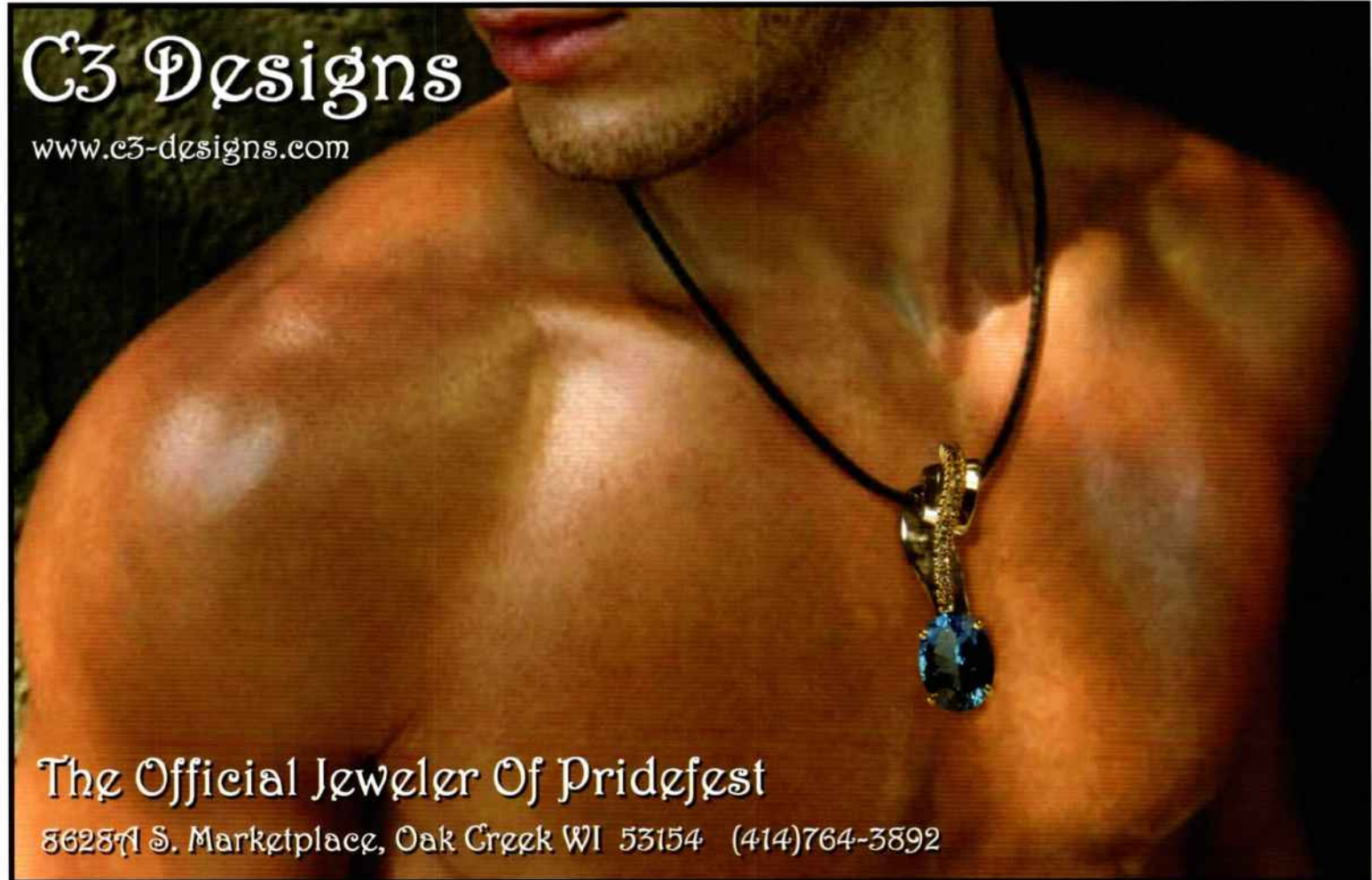
**"Where Milwaukee Meets"**

[www.HybridLounge.net](http://www.HybridLounge.net)

SUN	MON	TUE	WED	THU	FRI	SAT
<p>ALL DAY <b>SKYY</b> VODKA.</p> <p><b>\$3.50</b></p> <p>10AM-4PM \$3.50 Bloody's &amp; Mosa's</p> <p>HAPPY HOUR \$3 Well Gun Bombs \$1 OFF You Call It's</p>	<p>S.I.N. MONDAY DAILY HAPPY HOURS</p> <p><b>\$2 OFF ALL</b></p> <p><b>MALIBU ABSOLUT</b> VODKA</p> <p>9PM-CLOSE</p> <p><b>HOUSE DJ</b></p>	<p><b>\$2.00</b></p> <p><b>SCHLITZ TALL BOYS</b></p> <p><i>Tanqueray</i> <b>MIXERS</b></p> <p><b>\$4.00</b></p>	<p><b>\$2 OFF ALL</b> WHISKEY MIXERS &amp; WINE</p> <p><b>JAMESON</b> IRISH WHISKEY <b>SHOTS</b></p> <p><b>\$3.00</b></p>	<p>COLLEGE NIGHT! ID NEEDED</p> <p><b>\$1 PABST &amp; BLATZ CANS</b></p> <p><b>\$2 SCHLITZ TALL BOYS</b></p> <p><b>\$3.00</b></p> <p><b>WELL GUN BOMBS</b></p> <p>9PM-CLOSE</p>	<p><b>HAPPY HOUR SPECIALS</b></p> <p>10AM-4PM SPECIALTY DRINK SATURDAYS</p> <p>LONG ISLANDS BLOODYS DAQUIRIS MOJITOS MIMOSAS</p> <p><b>\$4.00</b></p>	

## C3 Designs

[www.c3-designs.com](http://www.c3-designs.com)



**The Official Jeweler Of Pridefest**

362571 S. Marketplace, Oak Creek WI 53154 (414)764-3892



# Find Your Big Life.

Diverse and Resilient is committed to the development and celebration of healthy lesbian, gay, bisexual, and transgender people who thrive and find satisfying lives in Wisconsin. While our work is often behind the scenes, our programs stretch from Eau Claire to Milwaukee and La Crosse to Appleton.

**We believe that LGBT people are good.** LGBT youth and adults are beautiful, creative, flexible, and smart. They are deeply connected to one another, to their families, and to their communities. They are born leaders and cooperative. Without LGBT people, Wisconsin communities would be at a loss in education, science, public service, health care, religion, business, industry, and the arts.

**We have worked on health promotion and disease prevention,** including our higher risks for violence, alcohol and drug use, tobacco use, and mental health disorders. Diverse and Resilient recognizes that our community problems are within our power, even though their source traces to the stressors which oppressive systems put on us.

**To do our work, we distribute nearly \$5,000 per month** to organizations and community leaders who do the daily hard and exciting work of promoting health and building community.

**These works are about you.**

**We are proud of lesbian, gay, bisexual, and transgender people in Wisconsin.**

## WE ARE PROUD OF YOU.



2439 North Holton Street  
Milwaukee, WI 53212

414.390.0444

[www.diverseandresilient.org](http://www.diverseandresilient.org)



Diverse & Resilient

YOUTHINK

rm2breathe



## PRIDEFEST 2010 SUNDAY STAGE LINEUP

### 5:15 p.m. Rainbow Stage

#### Mike Rickard

Atlanta, GA Acoustic Pop

[www.mikerickard.com](http://www.mikerickard.com)

MikeRickard1.jpg

In October 2009, Mike Rickard released his sophomore CD, SWEAT, which follows the 2004 release, Stirred Not Shaken. The critically received Stirred Not Shaken was nominated for Outstanding Male Debut Recording by Outmusic in 2005 and stayed on the Outvoice Top 40 Charts for more than a year, peaking at #2. In a departure from the mellower Stirred Not Shaken, SWEAT is an up-tempo pop rock record with plenty of hooks to draw the listener in.

### 5:30 pm Dance Pavilion

#### Milwaukee Pride

#### Parade Awards

Milwaukee, WI

[www.prideparademke.org](http://www.prideparademke.org)

The 2010 Milwaukee Pride Parade Awards Ceremony is a celebration of some of the best units which entered the 2010 Milwaukee Pride Parade on Sunday June 13th. The parade takes place on south 2nd street with step off occurring at 2 p.m. sharp. For more information about judging, parade route, or entering the parade, please visit our website.

### 5:30 p.m. Pridefest Youth Village

#### See 'N B Scene

R U ready 4 UR Big Break? If U R 14 – 24 years old come by and check out Project Q's Sunday night Party! B Ready 4 Gr8 music cuz we CW2CU! \*Adult allies welcome!

### 6 p.m. Milwaukee Gay Arts Center Arts & Culture Stage

#### The Vagina Monologues by Eve Ensler

Milwaukee, Wisconsin

Vagina Monologues

An Obie Award-winning play, providing a poignant and hilarious tour of the ultimate forbidden zone, The Vagina Monologues is a celebration of female sexuality in all its complexity and mystery. In this stunning phenomenon that has swept the nation, author Eve Ensler gives us real women's stories of intimacy, vulnerability, and sexual self-discovery. The Milwaukee Gay Arts Center is proud to present this production of *The Vagina Monologues*, featuring an entirely local cast.

### DANCE PAVILION

Pump! Presents: Cyon in Wonderland

With Your Mad Host: Cyon Flare

Special Effects & Appearances By:

Laseronics, VJ Brye, Snow Fire,

spHERE and NOW, Hoop D-Lite



6 p.m. - 7:45 p.m.

DJ Daniel Borrero

Chicago, Illinois

DJ /Dance

[www.danielborrero.com](http://www.danielborrero.com)

Since 1997, Daniel has worked hard to merge his two favorite cities, Chicago and New York, musically into one. Working in different types of venues since early in his career has given Daniel an eye for watching a floor while captivating his audience with his own brand of sound. Most importantly Daniel's talent and skill give his audience what they came for, a truly different music experience..

### 7:45 p.m. - 9:30 p.m. Jeffree Star

Los Angeles, California *Electronica*

(DJ set and live performance)

Over 70 million music plays & 68 million profile views on his Myspace.

Nearly 56,000 followers on Twitter

and well over 1 million Myspace friends.

Sold-out headlining tours of the U.S.

and the U.K. in 2008 with one of the

year's highest merchandise sales numbers at retail.

### 9:30 p.m. Blood on the Dance Floor

Orlando, Florida *Electronica*

[www.myspace.com/bloodonthedancefloor](http://www.myspace.com/bloodonthedancefloor)

Once upon a time there was a boy named Dahvie Vanity. And one day he decided he wanted to create something amazing. That no one had ever done before. And he wrote a song about sex - a building block for the crazy world he was building for all of us. And then he met his match. A sick

ghoul named Jayy Von Monroe. And together they made the frankenslut monster of today. And that is the story of Blood on the Dance Floor.



### 9:45 p.m. Amanda Lepore

New York City, New York

*Personality / Electro-Pop*

Model, fashion icon, nightlife hostess,

performer & transsexual icon Amanda

Lepore has not only received attention

for entertainment & business skills, but

was the advertising face for Heatherette,

M.A.C. (cosmetics), Mego Jeans, Swatch,

CAMP Cosmetics & more. Lepore has inspired

many limited edition projects including:

"Time Tranny" Swatch watch, which to

date is the fastest selling limited edition

Swatch, The Amanda Lepore Doll Collection

designed by Jason Wu - (sold out in a matter

of hours), and now "Amanda" the signature fragrance. Her debut

singles "Champagne" and "My Hair Looks Fierce" produced by

Fatal Art Syndicate with lyrics written by Cazwell are available on her

current remix album "Fierce Pussy". [www.everythingamanda.com](http://www.everythingamanda.com)



### 10 p.m. La Cage & Montage Presents

#### Kaci Battaglia

Clearwater, FL *Dance Pop*

At the age of 12, already

favoring her time spent on

musical pursuits to the acting auditions that she

was doing on a daily basis, Kaci wowed Curb

Records' founder and President, Mike Curb,

who signed her to his label. Within two

weeks she was in London doing a photo

shoot. Shortly thereafter, her first single

on Curb was released. "Paradise"

became a top ten hit around the world.

Her hit single led to performances on tele-

vision, sold out dates, and audiences that

would sing back the words to all of her

songs [www.myspace.com/kacibattaglia](http://www.myspace.com/kacibattaglia)



### 10:20 p.m. - Midnight

#### DJ Jerry Griffith

Kansas City, Missouri *DJ/Dance*

[www.myspace.com/djjerrygriffith](http://www.myspace.com/djjerrygriffith)

Jerry learned to spin in 1998 at the one gay

bar in Columbia, Missouri (his college

town). He has been evolving as a DJ ever

since. Jerry currently has been tearing up

the dancefloor at Hydrate in Chicago where

the excitement and enthusiasm of his unique sound has been embraced by many in the city where house music got its start.



# D.I.X.

Bar & Nightclub

2-cl Monday-Saturday 11am-cl Sunday

739 South 1st Street (corner 1st & National) Milwaukee

## GRAND OPENING JUNE 11th

Come In For Some Southern Hospitality  
"Where North Meets South"

## HOME OF THE HURRICANE

PrideFest  
Ticket  
Give-Away





# R U Ready?

## READY TO QUIT!?

Every year in Wisconsin, nearly 7,000 years of life are lost to lesbian, gay, bisexual, and transgender people because of their tobacco use.

Tobacco use represents a private crisis for LGBT people in Wisconsin; it comes at a huge public cost to us all.

### WHY DO WE SMOKE MORE?

One of the leading factors associated with LGBT people smoking is minority stress—the stress related to the stigma and discrimination we feel in our daily lives as LGBT people. Even those who have successfully quit for a period of time are more likely to state they returned to smoking because of the stressors of our lives.

### WHAT WORKS?

- You can double or triple your chances of a successful quit by combining strategies. Cold turkey rarely works.
- Build a social support network among your friends and family that cheers you on.
- Work on changing the habits of smoking. Think about where and when you smoke. What triggers your smoking behaviors? Be aware of the feelings that increase your desire to smoke and work on those.

### GET HELP.

Check out [www.rm2breathe.org](http://www.rm2breathe.org)

Call **1-800-QUIT-NOW** for loads of resources, including nicotine replacement products.

 **rm2breathe**



**OutReach**

Madison's Lesbian, Gay, Bisexual and Transgender Community Center



Diverse & Resilient



LGBT Community Center  
of the Chippewa Valley



Milwaukee LGBT Community Center



LGBT Resource  
Center  
SEVEN RIVERS REGION



**AMERICAN  
LUNG  
ASSOCIATION®**  
of Wisconsin



University of Wisconsin  
**SCHOOL OF MEDICINE  
AND PUBLIC HEALTH**

*This program is funded by the University of Wisconsin School of Medicine and Public Health's Wisconsin Partnership Program*



# Premium Waters, Inc.

bottled water solutions

5 gallon home and office delivery

Office coffee systems

Filtration coolers

Custom label small bottle



Custom H<sub>2</sub>O  
Label Solutions

Premium Waters, Inc.  
Is proud to support the  
2010 Pridefest Festival

CHIPPEWA<sup>®</sup>  
Spring Water



Contact us today for our  
New Customer Offer.  
[premiumwaters.com](http://premiumwaters.com)  
Eddie Zeman - 414-397-7357



# WISCONSIN CAPITOL PRIDE

August 20-22  
MADISON



Willow Island – two stages  
Saturday, August 21

Parade and March on Capitol  
Square and rally on Library Mall  
Sunday August 22nd

## PROUD • CONNECTED • VISIBLE

Visit [www.crowneplaza.com/madison-etown](http://www.crowneplaza.com/madison-etown) for special discounted PRIDE RATES  
FREE SHUTTLE BUS to/from sponsoring bars and Willow Island all day/night Saturday, August 21

PLAN B



[www.wisconsinpride.org](http://www.wisconsinpride.org)



WOOF'S



# WOOF'S



**Celebrating Wisconsin Pride all Summer Long!**

**Come to Madison for Capitol Pride  
August 20-22**

**SPIT-N-SEAMEN III Boat ride**

**Friday August 20th**

**visit [www.woofsmadison.com](http://www.woofsmadison.com) for details**

**Daily Drink Specials**

**Darts • Pool • 5 Big Screen TV's**

**114 King Street, Madison • [woofsmadison.com](http://woofsmadison.com)**



# PRIDEFEST 2010 SUNDAY HEADLINE SHOW

6:15 p.m. **Miller Lite Main Stage**

**Ronnie Nyles & Tallulah Who**  
Milwaukee, WI Pop Rock

[www.ronnienylen.com](http://www.ronnienylen.com)

Ronnie Nyles and Tallulah Who, a multi-award winning band captures you with their memorable melodic originals. Ronnie Nyles is a multiple nominee and eight time WAMI (Wisconsin Area Music Industry) winner. Featured on lead guitar and vocals is Deb Lopez, a multiple WAMI nominee formerly of "Tomboy". On bass guitar and vocals is Damon Landro, who has gained many miles of experience with different bands since the mid 80's. WAMI nominated for "Drummer of the Year" is Tommy Capponi on drums and backing vocals. And rounding out this group is Tina Dimmer on percussion, keyboards and background vocals.



6:15 p.m. **Rainbow Stage**  
**Nicole Reynolds**

Philadelphia, Pennsylvania  
Singer/Songwriter

[www.nicolereynoldsmusic.com](http://www.nicolereynoldsmusic.com)

Nicole Reynolds is a singer/songwriter, and a traveler without a home, at least for now. She has just released her fourth full studio record, "A Fine Set of Fools," after mostly being migrant for the past few years and working on farms. Nicole has toured throughout the United States, Germany, & Holland.



7:15 p.m. **Rainbow Stage** **Scott Free**

Chicago, Illinois Punk [www.scottfree.net](http://www.scottfree.net)

Scott Free, the queer-rock singer/ songwriter extraordinaire, is one of America's leading openly-gay male artists. His sometimes humorous, sometimes angry, always touching songs of queer life have gained him acclaim in both gay and straight media across the globe.



7:30 p.m. **Miller Lite Main Stage**

**Katie Todd**

Chicago, IL Indie Pop

<http://www.katietodd.com>

Lauded by iTunes.com as having one of the "top buzz bands in the country," Katie Todd claimed a spot as the website's "Artist of the Week," earning over 300,000 downloads for the single, "Face Down." Katie has shared the stage with Jewel, Kenny Loggins, The Wallflowers and Pete Dinklage, and has performed in front of packed audiences at venues and festivals such as House of Blues and Lollapalooza. On her new release, Mumbled Speech, Katie demonstrates gentle strength and versatility. She captures beautiful moments through raw, emotion-filled lyrics, with melodies that are both catchy and haunting. It's no wonder why Chicago Arts & Entertainment Magazine calls Katie "...a breath of fresh air that the Chicago music scene has been waiting for..."

7:30 p.m. - 8:45 p.m. **Milwaukee Gay Arts Center Arts & Culture Stage** **The Feast of Isis**  
featuring **Shaia Fahrid** and **Milwaukee Belly Dance**

Milwaukee, Wisconsin Art/Culture

[www.milwaukeebellydance.com](http://www.milwaukeebellydance.com)

Please see Saturday's description.

8:15 p.m. **Rainbow Stage**  
**London Bridgez**

New York City, New York  
Spoken Word

[www.londonbridgez.com](http://www.londonbridgez.com)

The writer and performer London Bridgez pushes the expectations of spoken word. "London" is her name. "Bridgez" represents what she does. She builds creative bridges between spoken word and music. Her stage performance is interactive truly building a bridge between her words, the music and the audience.



9 p.m. -10 p.m.

**Milwaukee Gay Arts Center Arts & Culture Stage**

**THE FIRKUS CIRKUS**

FIRKUS IMAGE

Please see

Friday's description.

9:15 p.m. **Rainbow Stage**

**SAGE4** [www.sage4.com](http://www.sage4.com)

Chicago, Illinois Metal /Goth

SAGE4 is a dark and dynamic female-fronted band that creates a unique blend of heavy metal, hard rock, gothic, progressive and alternative music.

SAGE4 features vocalist Tracey Sage along with internationally renowned virtuoso guitarist Mike Walsh from the band HESS, drummer extraordinaire Eric Ganci and bassist Mark Carozza.



9 p.m. **HEADLINE SHOW**

**Miller Lite Main Stage**

Viewer discretion advised for adult language.

**Headline Show Hosted by...**

**Robert Verdi**

New York City, New York

Personality

[www.robertverdi.com](http://www.robertverdi.com)

Robert Verdi. His name is synonymous with style. He's a self-made machine. He's a whirlwind of opinion and pop culture. He's got his hands in everything. He's a leading lifestyle expert, celebrity stylist and television personality.



**The Glamazons**

New York City, NY Pop

[www.theglamazons.com](http://www.theglamazons.com)

Created in 2001, The Glamazons are a plus-size pop group whose mission is to show the world that talent comes in all sizes. The fierce group consists of Lady Finger (Meryl Finger), Candy Apple (Sandra May) and Caramella (Laura Johnson). They are known for their high energy live shows with tight vocal harmonies and precision choreography in which they perform everything from show tunes to hip hop.

**The Joans**

Chicago, Illinois

Dance Pop

This Chicago based band

formed in 2007

The Joans are a

pop band that

combine elements of

old school new

wave, glam, and

electronic dance

grooves to form

their own unique sound.

The Joans consist of lead singers, Davy and Jennifer Joans, who personify the Hollywood glamor of their muse Miss Joan Crawford, lead guitarist Taylor Joans, drummer Aaron Joans, bassist Steve Joans and their trusty keyboardist and maid, Carol Ann (Ed Joans).

[www.thejoansband.com](http://www.thejoansband.com)



10:30 p.m. **Rainbow Stage**

**A Queen's Deadly Sin - PrideFest Wisconsin Drag Show**

Hosted by some of the State's most recognizable Divas! Shannon Dupree, Josie Lynn, Tempest Heat, The Contessa Pirahna, EMC Ravyn. Featuring performers from all around the state! Directed and produced by Ritchie "Rich" St. James.



**Joan Rivers**

Brooklyn, NY Comedy

[www.joanrivers.com](http://www.joanrivers.com)

The compulsively frank and brutally honest Joan Rivers performs as a comedienne, but her talent and accomplishments extend far beyond comedy. Rivers' illustrious career includes the titles of actress, designer, screenwriter, host, and businesswoman.

The world was introduced to Joan Rivers in



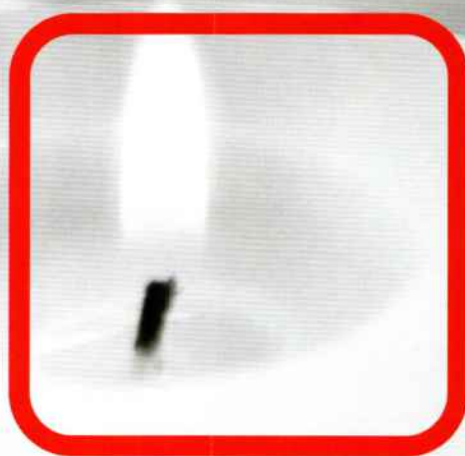
1968 on "The Tonight Show" with Johnny Carson, and three years later she made television history as the show's first guest host to fly solo. She went on to host her own talk shows, even picking up an Emmy and a star on the Hollywood Walk of Fame. Considered America's most accessible, authoritative and visible fashion spokesperson, Rivers continues to show her fashion know-how in the realms of antiques, fine art and vintage jewelry to name a few. At this year's Sundance and Slamdance Film Festivals, "Joan Rivers - A Piece of Work" a documentary and tribute to the outspoken LGBT supporter and comedian, was awarded the Documentary Editing Award, and put to rest any doubts that Rivers is truly the hardest working woman in show business.

Rivers' performance promises to be a night of glamorous gossip, celebrity criticisms and commentary that will prove the topic of conversations months after PrideFest ends. So there's only one trademark question that Rivers' has for PrideFest patrons, "Can we talk?"

Sponsored by:







it's always been about

**BEING THERE**

We know there is nothing more important than being there when it matters most.

That's why State Farm is proud to support PrideFest.

**Like a good neighbor, State Farm is there.®**



**State Farm**

statefarm.com®



# HAPPY PRIDE FEST



The Milwaukee LGBT Community Center  
wishes you the best  
during this PrideFest summer.





## THANK YOU TO OUR MEDIA SPONSORS!

(in alphabetical order)

**A.V. CLUB**  
\*MILWAUKEE\*

**GRAB**

**Gay Chicago**  
MAGAZINE .com

**iPARTY RADIO**  
Wanna Get Your Weekend Groove On?

**GO PRIDE**  
.COM

**CHICAGO PRIDE.COM**

**the ONION**

**QUEST** **OUTBOUND**



**FUSION**  
RADIO CHICAGO.COM

**ISTHMUS**  
TheDailyPage.com

92.1 The Mic  
AV CLUB  
Chicagopride.com  
Feast of Fun  
Fusion  
Gay Chicago  
Go Pride.com  
Grab Magazine  
Ipartyradio  
Isthmus  
Jammin 98.3  
Milwaukee's 94.5 Lake  
The Onion  
Our Lives  
Outbound  
Quest  
Shepherd Express  
Windy City Media  
Wisconsin Gazette  
Z104

**Jammin' 98.3**  
Today's R & B and Old School

**FEAST OF FUN**  
.COM  
Listen to iTunes #1 GLBT Talk Show

our lives  
**OL**  
ourlivesmadison.com

**Z104**  
The Hit Music Channel

**92.1 THE MIC**  
MADISON'S PROGRESSIVE TALK

**Shepherd**  
EXPRESS  
milwaukee.com

**MILWAUKEE'S 94.5 LAKE**  
FM  
WHAT WILL WE PLAY NEXT?

**WINDY CITY MEDIA GROUP**

**Wisconsin Gazette .com**  
THE VOICE OF PROGRESS FOR WISCONSIN'S LGBT COMMUNITY

**MONA's**

WWW.M-O-N-A-S.COM

414-643-0377

1407 FIRST ST

**MILWAUKEE'S OUT ABOUT**

**FREE DRINK**  
WITH  
**PRIDEFEST**  
**TICKET**  
**\$3.50 VALUE**

**WATCH THE PARADE**  
FROM OUR  
**HUGE PATIO**  
(WHERE THE PARADE STARTS)

**PARADE SUNDAY, BRUNCH BUFFET**  
**\$11.50 + TAX**  
**10:30AM-1:30PM**

**FULL RESTAURANT SUNDAY 6PM -12AM**  
**TUES - FRIDAY 4PM - 12AM**  
**GREAT FOOD!**

**APPETIZERS • HAMBURGERS • PIZZA • WRAPS**

2009 Community Shares  
BUSINESS HUMANITARIAN AWARD WINNER

- Affordable graphic design and illustration
- Expert Adobe software instruction
- Over 13 years serving the community

**MMK Design**

www.mmkdesign.com

2821 N. 4th St. #532  
Milwaukee, WI 53212

414.688.9635

maureen@mmkdesign.com





# PRIDEFEST 2010 FOOD VENDOR MENU

## A VARIETY OF FOOD CHOICES

With many food vendors serving a variety of delicious entrees, PrideFest has something for every taste. Beer, wine, water and soda will be available at several booths throughout the grounds. Current food vendor menus can be found online at [www.pridefest.com](http://www.pridefest.com). Enjoy! Additional vendors may be added; however, following are the 2010 vendors as of publication with a sampling of what they offer. (Please visit vendor on grounds for full menu)

### Mille's Italian Sausage

Italian Sausage Sandwich \$5.00

### Saz's

BBQ Pork Sandwich \$7.00  
BBQ Shredded Chicken Tender Sandwich \$7.00  
Chicken Tenders \$6.75  
Sampler Combination \$6.75  
2 Mozz Sticks, Sour Cream & Chive Fries, Cheese Curds  
Sour Cream & Chive Fries \$3.00  
Mozzarella Marinara 2 Sticks \$3.25  
4 Sticks \$6.00  
Battered White Cheddar Cheese Curds \$6.00

### Bella Caffé

Espresso \$2.50  
Gourmet Brewed Coffee \$2.00  
Cappuccino - Hot or Iced \$3.50  
Latte - Hot or Iced \$3.50  
Mocha - Hot or Iced \$4.00  
Americano - Hot or Iced \$2.50  
Café Au Lait \$3.00  
Steamer \$3.00  
Italian Soda \$3.00  
Hot Cocoa or Chocolate Milk \$3.00  
Tea - Hot or Iced \$2.00  
Chai Tea - Hot or Iced \$4.00  
Mocha Chill - Blended Mocha \$4.50  
Fresh Squeezed Lemonade \$3.50  
Lemon Ice - Blended Lemonade \$4.50  
Granita Slush - Blue Raspberry or Strawberry \$4.00  
Smoothie - Strawberry or Wildberry \$5.00  
Big Cookie \$1.50  
Craisin Orange Scone \$2.50  
Raspberry Filled Almond Scone \$3.50

### Auntie Annie's Pretzels

Original Pretzel \$3.50  
Cinnamon Pretzel \$3.75  
Pretzel Stix \$3.50

### Pacific Orient

Egg Roll \$2.50  
Pot Stickers \$6.00  
Chicken Fried Rice \$6.00  
Spicy Veg Singapore Noodles \$6.00  
Sesame Chicken \$6.00  
Combo Platter \$9.00

**Country Time Kettle Korn** See Menu At Vendor Stand

**Dairy Treat Shop** See Menu at Vendor Stand

### Joey's Seafood

Seaside Combo \$8.00  
Calamari Appetizer \$6.00  
Calamari Taco \$6.00  
Fish Taco \$5.50  
Fish & Chips \$7.00  
Coconut Shrimp \$6.00  
Lobster Roll \$6.00  
Xango - Cheesecake on a stick \$5.00  
French Fries \$3.50  
Onion Rings \$5.00

### Cousins Subs

Italian Special \$5.00  
Tuna \$5.00  
Club \$5.00  
Ham & Cheese \$5.00  
Turkey \$5.00  
Cheese Steak \$5.00  
Double Cheese Steak \$7.00

### Riviera Maya

Burrito - Beef \$7.50  
Burrito - Chicken \$7.50  
Burrito - Vegetarian \$7.50  
Quesadilla - Beef \$7.50  
Quesadilla - Chicken \$7.50  
Quesadilla - Vegetarian \$7.50  
Nachos - Beef \$8.00  
Nachos - Chicken \$8.00  
Nachos - Vegetarian \$8.00

### Aladdin

Gyro Sandwich \$6.50  
Crispy Chicken \$5.50  
Chicken Tikka Marsala \$6.50  
Falafel Sandwich \$5.50  
Falafel Plate \$7.00  
Hummus & Pita \$5.00  
1/3 lb Burger \$5.00  
1/3 lb Cheese Burger \$5.75  
Fries \$3.00  
Cheese Fries \$4.00  
Baklava on a Stick \$4.00  
Strawberry Lemonade \$4.00

### Olde Country Style Almonds

Rock Candy Sucker \$1.00  
Cinnamon Roasted Nuts & Deluxe Mix  
Snack Size Nuts \$3.00  
Medium Size Nuts \$6.00  
Large Size Nuts \$10.00

### 3B Concessions

Comdog \$4.00  
Footlong Comdog \$6.00  
Dogzilla Comdog \$8.00  
Nachos \$4.00  
Pickles \$2.50  
Lemonade \$3.50

### Nuline Homemade Ice Cream

Cone \$3.75  
Dish \$4.00  
Waffle Cone \$5.75



### Anderson Corn Roast

Corn on the Cob \$3.00

### Toner Des Concessions

Hamburger \$3.50  
Cheeseburger \$4.00  
Toner Burger \$6.00  
Mexee Burger \$3.50  
Hot Dog \$2.00  
Chicago Dog \$3.50  
Small Curly Fries \$4.00  
Large Curly Fries \$8.00  
Chester Fries \$6.00  
Taqitos \$5.00  
Mozzarella Sticks \$5.00  
Funnel Cake Fries \$5.00  
Home Made Oreo Cookie \$2.00

### Sil's Drive Thru

Small Bag Donuts \$2.00  
Large Bag Donuts \$4.00  
Family Pack \$11.00  
Dippin Donuts \$5.00  
Milk \$1.00

### Wisconsin Fried Cheese Curds

Fried Cheese Curds \$5.00  
Small Cheese Curds \$3.50  
Large Cheese Curds \$6.00  
Cheese Curd Batter Mix \$5.00  
Grilled Cheese Sandwich \$3.50  
Grilled Cheese Sandwich w/Bacon \$4.50  
String Cheese - 1 Stick \$1.00  
String Cheese - 4 Sticks \$3.00  
Giant Pickle in a Pouch \$2.00  
Original Cow Pie - Mini \$0.75  
Original Cow Pie - Large \$3.00  
Lemonade Freeze \$3.00

### Scardina Bakery & Deli

Italian Beef Sub \$7.00  
Chicken Panini \$6.00  
Tomato & Mozzarella Panini \$6.00  
Meatball Bomber \$6.00  
Sicilian Steak Sub \$8.00  
Slice of Pizza \$3.00  
Whole Pizza \$11.00  
Large Cannoli \$3.50  
Tiramisu \$4.50

### Buddy's Dog House

All Beef Hot Dog \$3.00  
Shaved Prime-Rib Dip \$6.00  
Nachos \$4.00  
Flame Roasted Chicken Sandwich \$5.50



# Avant-Garde®

Changing the face of the earth, one needle at a time

7219 W. Greenfield Ave  
West Allis, WI  
(414) 607-4068



**All Piercings Just  
\$15-\$35!!**

**Over 1000 Different styles of Body Jewelry!**



*Highly experienced in all types of Body Piercing.*

**See us in the  
Pride Parade on Sunday June 13th!**

**Over 50yrs of  
Piercing Experience**



[www.avant-garde-piercing.com](http://www.avant-garde-piercing.com)



# SWISS NAVY® wishes everyone Happy Pride 2010



Jeremy Biding photo courtesy of C1R.com

SWISS NAVY®  
SILICONE LUBRICANT



For more information about SWISS NAVY and MD Science Lab products, call 1.888.657.1717 or 954.725.5502 • [mdsciencelab.com](http://mdsciencelab.com)



# 2010 MILWAUKEE LGBT FILM/VIDEO FESTIVAL

NEW FORMAT, NEW FILMS, SAME FUN!

***SAVE THE DATES!***

***OCTOBER 21-24***

**FOLLOWED BY A  
BOUNTIFUL ARRAY  
OF FILM EVENTS  
*ALL YEAR LONG!***

***READ ALL ABOUT IT AT  
ARTS.UWM.EDU/LGBTFILM***

PECKSCHOOL  
OF THE ARTS

UNIVERSITY of WISCONSIN  
**UWMILWAUKEE**  




# COMMUNITY RESOURCE GUIDE

## Art, Sports Entertainment Organizations

**Cream City Chorus**  
315 W. Court St. Milwaukee,  
WI 53212 (414) 276-8787  
www.creamcitychorus.org

**Cream City Squares**  
(414) 445-8080  
djdilges@execpc.com  
www.iagsdc.org/creamcity

**Front Runners** (414)443-0379  
www.ullwolf.com/frontrunners  
mke/welcome.html

**GAMMA - Milwaukee**  
PO Box 1900, Milw., WI  
53201 (414) 530-1886  
gamma@milwaukeeegamma.com  
www.milwaukeeegamma.com

**Holiday Invitational Tournament**  
PO Box 899, Milw., WI 53201  
(414) 881-8071  
director@hitmilwaukee.org  
www.hitmilwaukee.org

**Harmony Cafe Appleton**  
233 E. College Ave., Appleton  
(920) 734-2233

**Harmony Cafe Green Bay**  
1660 W. Mason Street  
Green Bay (920) 569-1593  
www.harmonycfe.org  
myspace.com/harmonycfe

**Men's Voices Milwaukee c/o**  
U.C.C. 2717 E. Hampshire St.,  
Milw. 53211 (414) 861-5526  
www.mvmchorus.org

**Miltown Kings**  
myspace.com/miltownkings

**Metro Milwaukee Tennis Club**  
3957 No. 81st St. Milw., WI  
53222 (414) 616-3716  
Moenell@msn.com  
www.milwaukeeetennis.com

**Milwaukee Gay Arts Center**  
703 So. 2nd St. Milw., WI  
53204 (414) 383-3727  
milwagac@yahoo.com  
www.milwaukeegayartscenter.org

**Milwaukee Pride Parade**  
PO Box 070177 Milw., WI  
53207 (414) 607-3793  
www.prideparademke.org

**PrideFest**  
PO Box 511763, Milw., 53203  
(414) 272-3378  
www.pridefest.com

**Saturday Softball League**  
2333 N. 56th St., Milw. 53210  
(414) 350-7147  
www.ssbilmilwaukee.com

**Shoreline Country Dancers**  
2809 E. Oklahoma Ave.,  
Milwaukee, 53207  
info@shoreline-milw.org  
www.shoreline-milw.org

**Wisconsin Gay Hockey**  
(414) 202-5874  
wigayhockey@wi.rr.com  
home.wi.rr.com/wigayhockey

**Women's Voices Milwaukee**  
315 W. Court St., Milw., 53212  
(630) 890-5984

## LGBT Service and Advocacy Organizations

**Center Advocates**  
315 W Court St. Milwaukee,  
WI 53212 (414) 271-2656  
www.centeradvocates.org

**Charles D Productions**  
315 W Court St. Milwaukee,  
WI 53202 (414) 263-9999  
charlesdprodinc1@sbcglobal.net  
www.charlesdprodinc.com

**Connexus** 1240B E. Brady  
St. Milwaukee, WI 53202

**Cream City Foundation**  
759 N. Milwaukee, Suite212  
Milwaukee, WI 53202  
(414) 225-0244  
director@creamcityfoundation.org

**Diverse And Resilient**  
1240B E. Brady St. Milw.  
WI 53202 (414) 390-0444  
director@diverseandresilient.org  
www.diverseandresilient.org

**Fair Wisconsin** 122 State St.,  
Suite 309 Madison, WI 53703  
(608) 441-0143  
www.fairwisconsin.org

**FORGE** PO Box 1272 Milw.,  
WI 53201(414) 559-2123  
info@forge-forward.org  
www.forge-forward.org

**G/L Community Trust Fund**  
PO Box 1686, Milw., WI  
53201 (414) 643-1652  
glcentermil@aol.com  
www.glcommunitytrustfund.com

**Galan Club** 315 W. Court  
St., Suite 201 Milwaukee, WI  
53212 (414) 276-6936  
mail@galanoclub.org  
www.galanoclub.org

**Gay / Bi Fathers Support  
Group c/o Outreach,** 600  
Williamson St. Madison, WI  
53703

Serving Dane, Rock, Jefferson  
Counties For location & dates  
e-mail doolguy@charter.net

**Gay Narcotics Anonymous**  
Meets Fridays @ 7 p.m.  
315 W. Court St., 2nd Fl.  
Milw 53212 (414) 276-6936

**Gay Youth Milwaukee**  
PO Box 090441 Milwaukee,  
WI 53209 (414) 265-8500

**Gemini Gender Group**  
PO Box 44211 Milwaukee, WI  
53214 (414) 297-9328

**Human Rights League-Political  
Action Committee (HRL-PAC)**  
315 Court St #9 Milwaukee,  
WI 53203 (414) 455-5292  
www.hrl-pac.org hrl-  
pac@yahoo.com

**Lesbian Alliance**  
315 W. Court St. Milwaukee,  
WI 53212 (414) 272-9442  
lamm@milwpc.com

**LBGT Center of SEWisconsin**  
1456 Junction Ave., Racine,  
WI 53403 (262) 664-4100  
info@lgbtsewis.org

**Log Cabin Republicans**  
PO Box 199, Milw., WI 53201  
(414) 755-1954  
membership@icrwi.com

**Milwaukee LBGT  
Community Center**  
315 W. Court St. Milwaukee,  
WI 53212 (414) 271-2656  
www.mkelgbt.org

**Pathfinders**  
1614 E. Kane Pl. Milwaukee,  
WI 53202 (414) 271-1560  
info@tccmilw.org  
www.tccmilw.org

**PFLAG Milwaukee**  
315 W. Court St. Milwaukee,  
WI 53212 (414) 288-9198  
pflagmilwaukee@hotmail.com

**PFLAG Racine/Kenosha**  
PO Box 580058 Pleasant Prairie,  
WI 53158 (262) 694-2729  
pflagkenosha@aol.com

**Positive Direction Milwaukee**  
(414) 461-5894

**Positive Voice**  
PO Box 1381 Green Bay, WI  
54305-1381 (920) 435-4404  
info@pvinc.org www.pvinc.org

**Project Q**  
3215 W. Court St., Milw., WI  
53212 (414) 223-3220  
kurt@projectq.org  
www.projectq.org

**Queer Program**  
PO Box 090441 Milwaukee,  
WI 53209 (414) 265-8500  
queerprgm@aol.com

**Queer Zine Archive Project**  
2935 N. Fratney St.  
Milwaukee, WI 53202  
qzap@qzap.org  
www.qzap.org

**Rainbow Over Wisconsin**  
702 E. Wisconsin Ave.  
Appleton, WI 54911  
www.rainbowoverwisconsin.org

**SAGE Milwaukee** 1845 N.  
Farwell - Ste. 220 Milwaukee,  
WI 53202 (414) 224-0517  
email@sagemilwaukee.org

**Transgender Aging Network**  
6990 N. Rockledge Ave.  
Glendale, WI 53209 (414)  
540-6456  
loreecd@aol.com

**UWM LBGT Resource Center**  
UWM Union WG89 PO Box  
413 Milwaukee, WI 53201  
(414) 229-4116  
jmurray@uwm.edu  
www.uwm.edu/Dept/OSL/LBGT

**Wisconsin Rainbow  
Alliance of the Deaf**  
Box 353, Hartland, WI 53029  
www.wiscrad.org

**NOT LISTED  
CORRECTLY?  
SEND US YOUR  
NEW INFO  
editor@quest-online.com**

## LGBT Social Groups

**Argonauts of Wisconsin**  
Box 22096, Green Bay, WI 54305  
argonews@sbcglobal.net  
www.argonautsll.org

**Bear Club 4 Men**  
Box 13463, Green Bay, 54307  
www.bo4m.com

**Black and White Men  
Together** PO Box 80395,  
Milwaukee, WI 53208  
(414) 461-5359  
bwmtmilwaukee@aol.com  
www.bwmtmilwaukee.org

**Brew City Bears**  
PO Box 1035, Milw., WI  
53201 (414) 331-3744  
bcb4men-alan@sbcglobal.net  
www.bcb4men.info

**Brew City Soul Brothers**  
Brewcitybrothers@yahoo.com

**The Brunch Club**  
jennieragland@wi.rr.com

**Castaways**  
PO 1697 Milwaukee 53202

**Dodge Co. Gay/Bi Men's  
Social Group of Wisconsin**  
dcgmsg@yahoo.com  
groups.yahoo.com/groups/DCGMSG/

**Femme Mafia Milwaukee**  
myspace.com/femmefamiamke

**Great Lakes Harley Riders**  
PO Box 341611 Milw, 53234  
bootedhog@aol.com

**Men (MenEnjoyNudism)**  
Box 0631, Milwaukee 53207

**N.E.W. Brotherhood**  
Box 12793, Green Bay, 54307  
www.NEWBrotherhood.org

**Rainbow Families c/o PFLAG**  
315 W. Court St., Milw, 53212  
mkerainbowfamilies@hotmail.com

## LGBT Welcoming Churches

**Angels of Hope MCC**  
3607 Libal St., Green Bay, WI  
(920) 983-7453  
Appleton at UCC Chapel,  
724 E. South River Dr.  
aohmcc@netnet.net  
www.angelsophemcc.org

**Church of Atheism**  
206 Vine St., Eau Claire, WI  
54703 (706) 593-2686  
church\_of\_atheism@yahoo.com  
www.freewebs.com/churchofatheism

**First Unitarian Society of  
Milwaukee** 1342 N. Astor,  
Milw., 53202 (414) 273-5257  
office@uwmilwaukee.org  
www.uwmilwaukee.org

**Footstep Fellowship** First  
Presbyterian Church Cjapel  
(715) 355-8641 PO Box 171,  
Wausau, WI 54402  
footstepfellowship@yahoo.com  
www.geocities.com/footstepfel  
lowship

**Fox Valley UU Fellowship**  
2600 E. Phillip Lane Appleton,  
WI 54915 (920) 731-0849  
www.fvuuf.org

**Lake Park Lutheran Church**  
2647 N. Stowell St.  
Milwaukee, WI 53211 (414)  
962-9190  
office@lakeparklutheran.com  
www.lakeparklutheran.com

**Love of God Cathedral  
Universal Anglican Church**  
9633 W Greenfield Ave  
West Allis, WI 53214  
www.L-O-G.org  
RevJ@MilwaukeeMinistry.org

**Milwaukee Metropolitan  
Community Church** PO Box  
2421 1239 W. Mineral St.  
Milw. WI 53204 (414)383-1100  
info@queerchur h.org  
pastor@millmcc.org  
www.queerchurch.org

**Plymouth Church** 2717 E.  
Hampshire Ave. Milwaukee,  
53211 (414) 964-1513  
plymouthchurch@choiceonemail.com  
www.plymouth-church.org

**Preble Park Presbyterian  
Church** 607 Ravenswood Dr.  
Green Bay, WI 54302  
(920) 468-7125

**SS Cyril & Methodius  
United Independent  
Catholic Church** Neenah, WI  
54956 (920) 836-2199  
stcyrilandmethodius@centrytel.net

**Underwood Baptist** 1916 N.  
Wauwatosa Ave. Wauwatosa,  
WI 53213 (414) 258-4246  
office@underwoodchurch.com  
www.underwoodchurch.com

**Union Congregational UCC**  
716 So. Madison St., Green  
Bay 54303 (920) 437-9266  
Fax (930) 437-3765  
unionucc@gbonline.com

**Unity Church of Kenosha,**  
Racine 9220 26th Ave.,  
Kenosha, WI 53143 Rev. Don  
(262) 914-8389  
hellodjd@sbcglobal.net

## Neighborhood Associations

**Bay View GAYS**  
(414) 482-3796  
bvgpresident@bvgays.com  
www.bvgays.com

**Washington Heights  
Rainbow Association**  
(414) 258-8834  
washhtsrainbow@aol.com  
washingtonheightsrainbow.org

**Wauwatosa Rainbow  
Association** (aka Rainbow  
Fireflies)  
(414) 774-9470  
tosarainboew@yahoo.com

## Other Service Agencies with LGBT Programming

**Aids Resource Center of  
Wisconsin**  
820 Plankinton Ave. PO Box  
510498 Milwaukee, WI 53202  
(414) 273-1991  
www.arcw.org

**Brady East STD (BESTD)**  
Clinic 12240 E. Brady St.  
Milwaukee, WI 53202  
(414) 272-2144  
bestd@execpc.com  
www.bestd.org

**Children Service Society of  
Wisconsin**  
1212 S. 70th St. Milwaukee,  
WI 53212 (414) 453-1400  
jane.ottow@cssw.org  
www.cssw.org

**The Counseling Center of  
Milwaukee**  
2038 N. Bartlett Ave.  
Milwaukee, WI 53202  
(414) 271-2565  
info@tccmilw.org  
www.tccmilw.org

**OutReach**  
600 Williamson St. (Ste. P1)  
Madison, WI 53703  
(608) 255-8582  
www.lgbtoutreach.org

**STD Specialties Inc.**  
32351 N. Holton St.  
Milwaukee, WI 53212  
(414) 264-8800  
www.STDSpecialties.org

**NOT LISTED  
CORRECTLY?  
SEND US YOUR  
NEW INFO  
editor@quest-online.com**

**THERE'S ROOM TO LIST YOUR  
GROUP OR ORGANIZATION  
HERE FOR FREE!  
email  
editor@quest-online.com**



# TEMPT

## MONDAY

"MILLER MONDAY"

\$2.00 MILLER PRODUCTS

## TUESDAY

"TOO HOT FOR T-SHIRTS"

2 FOR 1 YOU CALL IT DRINKS 8-CLOSE  
AND OF COURSE SHIRTS ARE OPTIONAL!

## WEDNESDAY

"HERE'S TO EFFEN WEDNESDAY!"

ALL EFFEN FLAVORS ARE F\$@#\* &! \$3.00

## THURSDAY

"THREE THREE THREE"

\$3.00 3 OLIVES VODKA MIXERS

\$3.00 RED BULL BOMB SPECIALS

## FIRDAY & SATURDAY

LET US TEMPT YOU WITH THE BEST  
OF EVERYTHING! SHOT SPECIALS  
POWERED BY MILWAUKEE AND  
CHICAGO'S HOTTEST DJ'S!

## SUNDAY

"SALTY SUNDAYS"

2 FOR 1 SHOTS OF PATRON  
AND MARGARITAS

DON'T  
FORGET  
OUR  
COCKTAIL  
HOUR!

JOIN  
US FOR  
2 FOR 1

DOMESTIC BEER  
AND RAIL DRINKS  
BEGINNING AT  
4PM DAILY

414-221-0228

324 E Mason St • Milwaukee, WI



CHOOSE **TASTE.**

GREAT TASTE OF  
**PRIDEFEST**



 GREAT BEER  
GREAT RESPONSIBILITY™  
© 2009 MILLER LITING CO. MILWAUKEE, WI

