

Wisconsin's LGBT News & Entertainment Magazine for 17 Years

# QUEST

Volume 17 Issue 1  
February 11 - 24, 2010

**INSIDE:**  
**MIKE FITZPATRICK**  
**REFLECTS ON 3**  
**DECADES OF GAY**  
**JOURNALISM**

**PLUS**  
**MILWAUKEE GAY ARTS CENTER**  
**YOUR PLACE FOR ART**  
**QUEST TURNS 17 THIS ISSUE!**







# FRIENDS

## GET TESTED TOGETHER

Bring your friends and get tested for HIV at BESTD Clinic. It's free and it's fast, with no names and no needles. We also provide free STD testing, exams, and treatment. Staffed totally by volunteers and supported by donations, BESTD has been doing HIV outreach since 1987. We're open:

- Mondays 6 PM–8:30 PM: Free HIV & STD testing
- Tuesdays 6 PM–8:30 PM: Free HIV & STD testing & STD diagnosis & treatment

Some services only available for men. Visit our Web site for details.

Brady East STD Clinic • [www.bestd.org](http://www.bestd.org)  
1240 E. Brady Street • Milwaukee, WI 53202 • 414-272-2144

**BESTD**  
CLINIC

### CDC TO PRESENT FINDINGS ON INCREASED HIV INFECTION RATES FOR YOUNG GAY MEN IN MILWAUKEE

**Milwaukee** - On March 2, CDC investigators will present findings from the on-site investigation conducted last fall regarding the increase in HIV infection in Milwaukee among young men who have sex with men (MSM), especially young African American MSM.

Two presentations are scheduled- for public health professionals March 2, 9:00 AM - 12:00 noon (continental breakfast at 9:00 AM; presentation at 9:30 AM) at the African American Women's Center, 3020 West Vliet Street, Milwaukee, WI 53208. All are welcome but the presentation will be geared towards a professional audience and will be followed by discussion of next steps. A second presentation for community members and geared towards an audience of young MSM will be held March 2, 5:30 PM to 8:00 PM (food served at 5:30 PM, presentation to follow) at the Milwaukee LGBT Community Center, 315 West Court Street, Milwaukee, WI 53212-3842. Again all are welcome and will be followed by discussion of next steps.

### FIRST EVER WISCONSIN REPORT ON GAY AND TRANSGENDER HOMELESS YOUTH IN MILWAUKEE TO BE RELEASED STUDY FINDS 23% OF HOMELESS YOUTH IN SURVEY IDENTIFY AS GAY AND TRANSGENDER

**Milwaukee** - Cream City Foundation is releasing a first-ever report and research on LGBT youth who are homeless in Milwaukee. Of those surveyed in this initial research, 23% identified LGBT. In addition, LGBT youth report being "thrown out" at triple the rate of heterosexual youth and are more likely to report abuse/violence as a reason for homelessness.

"This initial Milwaukee pilot study echoes the findings of national studies that show that 20-40% of all homeless youth identify as LGBT - and that is pretty alarming," stated Maria Cadenas, Executive Director. "It points to the need to include an LGBT lens if we are serious about addressing youth homelessness."

Cream City Foundation, along with our grantee partners, has been working to address this important issue. Over the past year, researchers at the Center for Urban Initiatives and Research at UW-Milwaukee have collected data from several Milwaukee area agencies that serve homeless youth. For a full copy of the results visit [www.CreamCityFoundation.org](http://www.CreamCityFoundation.org) and click on "LGBT Youth Homeless Report" on the home page.

The general public and members of the media are invited to a Community Meeting hosted by Cream City Foundation regarding this report and the initial research results Wednesday, February 24 from 4:00 pm - 5:30 pm at Renaissance Place, 1451 North Prospect Avenue, Milwaukee, WI. The event is free and open to the public. To RSVP or fmi, please call 414.225.0244.

### SING-A-LONG WIZARD OF OZ BENEFIT FOR SKYLIGHT OPERA THEATRE

**Milwaukee** - Skylight Opera Theatre will present a limited engagement of the popular Sing-a-Long Wizard of Oz as the third such fundraising event. Two screenings are scheduled: February 19 at 7:30pm and February 20 at 7:30pm in the Cabot Theatre of the Broadway Theatre Center. Proceeds from the screenings will directly support the Skylight's productions and education programs.

This is an audience participation event that encourages fun costumes and lots of singing. Sing-A-Long Sound of Music was the first attempt at re-working a well known family classic into a roudy fun audience participation event. The Wizard Of Oz sing-a-long version came next. This version is based on the new 70th anniversary edition and is complete with lyric subtitles so the audience can join in.

Things start with a vocal warm-up led by the evening's host, Skylight's own Associate Artistic Director and Education Director, Ray Jivoff, last seen as Roger de Bris in Skylight's hit The Producers. Next there will be a costume competition in which contestants are invited onstage. Prizes will be awarded to the top three costumes at each screening.

Tickets are \$25 and include admission to the movie, the pre-show event, and a \$15 tax-deductible contribution to the Skylight Opera Theatre. Tickets can be purchased by calling the Broadway Theatre Center box office at 414-291-7800 or online at [www.skylightopera.com](http://www.skylightopera.com).

### BREAKFAST CHANGE MAKES A DIFFERENCE FOR GAY YOUTH

**Milwaukee** - Front Runners/Walkers, a group of lesbian, gay, bisexual and transgender (LGBT) runners/walkers and their friends, meets for breakfast every Saturday after their weekly run or walk. The breakfast is more than a chance to catch up with each other, it is also their way of giving back. After the bill and tip are paid, the group collects the left over dollars and cents. Overtime those saved funds add up to support a variety of Milwaukee causes.

January 16th the group voted to honor Cream City Foundation's work by presenting them with a gift of \$500. "This is a tremendous honor," said Maria Cadenas. "The members of Front Runners/Walkers took something as simple as collecting change from a joint outing, to make a donation five-times our average gift size possible!" Thier plans are to use the funds to impact the child welfare system and help create a more supportive and responsive environment for all youth - regardless of sexual orientation or gender identity.

"Our LGBT Youth Homelessness Initiative is only made possible from the many donations of generous individuals and foundations," said Stacey Herzing, President of Cream City Foundation, "An estimated 24% of all homeless youth identify as LGBT, a donation of this size is invaluable in helping us get that message out."

"We hope this helps Cream City as they continue in their efforts to create equality for all LGBT people, including our youth," said Dan Lagerman, member of Front Runners/Walkers.

# WOOF'S

## MADISON'S PREMIER BAR!

**MEN • WOMEN • BEARS • POOL  
DARTS • SPORTS • LEVI/LEATHER  
BEER • LEAGUE PLAY • GRRRRR  
LIVE DJ'S • BEER BASH**

**Check our website for daily specials  
[www.woofsmadison.com](http://www.woofsmadison.com)**

**114 King St., Madison • 608.204.6222**

### MAKING YOUR TIME WORK FOR YOU

9 Improve how you spend your time?  
Need more time?

Want to achieve more success?

8 Contact Craig for your  
free, no obligation  
7 20 minute consultation.



**Personal Effectiveness Plus!  
[www.gainingtime.com](http://www.gainingtime.com)  
414-460-3253**



Since 1996, Front Runners/Walkers has been meeting every Saturday morning at 9am at the far-east end of North Avenue for a 35 min run or walk through Milwaukee's beautiful lakefront. After wards, they head off to a nearby restaurant for a friendly breakfast. All are welcomed and there are no fees or dues to participate. For more information visit <http://ullrwolf.com/frontrunnersmke/welcome.html> or call 414.443.0379.

Cream City Foundation, the second oldest LGBT foundation in the country and serves as a catalyst for social change on behalf of LGBT communities. FMI call 414.221.0244 or visit [www.CreamCityFoundation.org](http://www.CreamCityFoundation.org).

## **MILWAUKEE SSBL ANNOUNCES MILLER PARK VOLUNTEER TRAINING @ MGAC**

Milwaukee Saturday Softball League (SSBL) invites all volunteers to its annual Miller Park Concession Volunteer Training session. The one-hour session begins at 6:30pm, Tuesday, February 23 at the Milwaukee Gay Arts Center, 703 South 2<sup>nd</sup> Street (one block north of National Avenue). Players, fans and friends are encouraged to attend. Training is required for all stadium volunteers.

Each year SSBL volunteers staff a Miller Park concession stand at Milwaukee Brewers' home stands in order to raise funds. This season SSBL will work at 32 games. Revenue raised by this venture supports SSBL softball and the Dairyland Classic Tournament.

For added incentive, volunteers who work 13 games may attend the gay softball world series in Columbus, Ohio, with their transportation and accommodations subsidized by SSBL.

Please arrive early to mix and mingle with your teammates, friends and fans. Session begins promptly at 6:30pm

## **PRIDEFEST PREPARES FOR TIME CHANGE** **Midwest's Largest LGBT PrideFestival Opens June 11 Seeking Volunteers**

**Milwaukee** - Summer in Milwaukee will once again shine brighter, as the 23rd annual PrideFest celebration kicks off on the Summerfest grounds this June 11-13. For the second year in a row, organizers have chosen the second weekend in June to celebrate. Another new development is the change to the hours of operation. Festival attendees can now enjoy an earlier start time, as the gates open at 3pm on Friday June 11th.

The Saturday and Sunday schedules begin at 12pm, opening one hour later than in previous years. On all three nights, festival goers can enjoy entertainment, activities and celebration until midnight, when festival grounds close.

Pridefest organizers are also seeking dedicated individuals and organizations to donate their time and energy as volunteers on the grounds.

"We will be accepting applications online up until the week of Pridefest," says Volunteer Director Deon Young. "We want to make sure that we have the volunteers we need to make PrideFest Milwaukee 2010 a success!"

PrideFest is a non-profit organization that relies on the energy and ideas of a dedicated team of volunteers. As the biggest LGBT event in Wisconsin and one of the nation's premier Pride festivals, PrideFest seeks volunteers with a wide range of skills.

Applications can be found online at [www.pridefest.com](http://www.pridefest.com). A link to the volunteer applications is available on the left sidebar.

## **DANCE FOR YOUR HEALTH MILWAUKEE CLUBS OFFER LESSONS**

Two Long running LGBT social clubs in Milwaukee are offering dance lessons. Cream City Squares, Milwaukee's square dance club offers lessons beginning Sunday, February 14 from 1-3 pm at Lake Park Lutheran Church on Milwaukee's East Side. Meanwhile, Shoreline-Milwaukee will offer partner dances and contemporary line dance lessons for beginners at Hot Water/The Wherehouse, 818 S. Water Street in Milwaukee, on the 2nd and 4th Friday each month, from 7:30-8:30 pm.

Shoreline makes this dance opportunity available to those with absolutely no previous dance experience required. Likewise NO partner is required. Instructors will teach the 2-step and basic swing using both country music and and pop music. Dancers rotate partners during lessons. FMI call Laura (414)747-0388 or visit [www.shoreline-milw.org](http://www.shoreline-milw.org).

Although most people dance for the fun of it, regular dancing has significant health benefits. Laura from Cream City Squares says, "This isn't your grandparents' dancing! There is no dress code--blue jeans and a Tshirt are OK--dancers can dance either the boy or girl role, it's high energy, and NO partner is needed!" The Square Dance lessons are smoke and alcohol free. FMI James (414)461-5359 or Shari at (414)526-5055. [www.iagsdc.org/creamcity](http://www.iagsdc.org/creamcity)

## **POINT FOUNDATION NOW ACCEPTING APPLICATIONS FOR LGBT SCHOLARSHIPS**

The **Point Foundation**, the nation's largest scholarship-granting organization for lesbian, gay, bisexual, and transgender (LGBT) students of merit, has announced the opening of its 2010 application season. Students who will be enrolled in undergraduate or graduate programs for the 2010-11 school year are eligible to apply for the prestigious multiyear scholarships.

The average amount of annual support devoted to each scholar is between \$25,000 and \$33,000. A Point Scholarship award includes financial support as well as programmatic support in leadership training, community service, and mentoring.

The rigorous selection process requires candidates demonstrate academic excellence, leadership skills, community involvement, and financial need. Particular attention is paid to students who have lost the financial and social support of their families and/or communities as a result of revealing their sexual orientation, gender identity, or gender expression.

Point Scholars agree to maintain a high level

of academic performance, attend Point's various leadership forums, participate in press interviews, and give back to the LGBT community through the completion of an individual community service project each year. They are matched with mentors from the professional world through Point's Mentoring Program; mentors lend their professional expertise and career guidance and become important role models to scholars.

FMI <http://www.pointfoundation.org/instructions.html>

## **MEMBERS OF CONGRESS TELL BOY SCOUTS TO END DISCRIMINATION AGAINST GAYS AND LESBIANS**

**Washington DC** - 26 Members of Congress urged the Boy Scouts of America to end its discriminatory policy of not accepting gays and lesbians in a letter sent to the Chief Scout Executive of the organization.

The correspondence, initiated by U.S. Representatives Gary Ackerman (D-NY) and Tammy Baldwin (D-WI), was sent in response to the Boy Scouts' rejection of Cate and Elizabeth Wirth, a couple in Vermont who were told they could not volunteer for their 10 year old son's Cub Scout pack after it was revealed that the women are lesbians. In explaining the Boy Scouts' national policy of excluding gays and lesbians as volunteers, their district director suggested that the Wirths would "push their lifestyle on the boys."

"Regrettably, the current, discriminatory policy of the Boy Scouts of America has denied opportunities for young scouts, community-oriented citizens, and loving parents," the lawmakers wrote in the letter to Robert Mazza, the Chief Scout Executive of the Boy Scouts of America. "As you celebrate the 100th Anniversary of the Boy Scouts of America, it is long past time that the Boy Scouts finally provide the opportunity for all Scouts, Leaders, and volunteers, to share in the joys of Scouting, regardless of sexual orientation."

Ackerman, a proud Eagle Scout, continues to salute the tireless contributions of Scouts from throughout the nation but contends that the discriminatory policy of the organization must change.

"I'll always be a proud Eagle Scout, but this discriminatory policy must end" said Ackerman. "Rejecting a Cub Scout's mothers from volunteering just because of their sexual orientation doesn't comply with the Scout law I recited at Scout meetings."

"Scouting is a proud and honorable tradition in this country, but discrimination is not," said Congresswoman Baldwin, Co-Chair of the LGBT Equality Caucus. "Children with same sex parents deserve the same opportunities to have their parents involved in their scouting experience as their classmates do and I urge the Boy Scouts of America to end this discriminatory policy," Baldwin said.

Over the last three decades, Mike Fitzpatrick has been one of Wisconsin's most effective LGBT activists. He is also arguably one of our state's longest serving and most widely-read gay journalists — outlasting a string of state LGBT publications and their editors since the mid-1980s.

While some may be familiar with his more than 25 years of work in HIV/AIDS or his long-time LGBT political activism, Fitzpatrick has over forty years of writing experience. His first paid piece appeared in the *Winona Daily News* in 1965. He has edited or contributed to newsletters and periodicals for schools, employers, local and statewide organizations, and churches non-stop since 1962.

Born and raised in the New York City area, he has called Wisconsin his home for over 45 years. He was instrumental in helping get several state LGBT institutions up and running. In the 1980s, he helped co-found the Central Wisconsin AIDS Support Group, Inc. (CWASG) and was a charter board member of the Central Wisconsin AIDS Network (CWAN), the forerunners of what is now the Wausau office of the AIDS Resource Center of Wisconsin (ARCW). In the 1990s, he helped co-found the statewide LGBT civil rights organization Action (now Fair) Wisconsin and is a former president of that organization. In recent years, he has helped develop Rainbow Over Wisconsin (ROW) into one of the state's three LGBT-focused charitable foundations.

Fitzpatrick's political and community connections made him uniquely positioned as a journalist. He has personally covered scores and scores Pride events across the state over the years and has witnessed the ups and downs of the LGBT community in Wisconsin over nearly three decades.

His work with the statewide LGBT press began in 1980s with contributing stories for *IN Step* under founding publisher Ron Geiman. Ten years later, he was a columnist and writer for the *Wisconsin Light*. Starting in the mid-nineties, he was a prized reporter during my tenure as editor-in-chief of *Wisconsin IN Step*. It was during this time that his popular "Reality Check" columns became a must-read with readers enjoying the skillful way Fitzpatrick would take a pin to over inflated egos or put in plain words the nuances of LGBT politics in Wisconsin.

In 2003, he became the news editor and web master for *Quest* magazine. Every morning for the last seven years, Fitzpatrick has also



## Fitzpatrick Steps Back and Speaks Out

helped daily updates to Quest's popular QNU news update webpage. QNU has grown to be the one of the most visited LGBT web pages in the state, providing visitors with a mix of LGBT news and gossip from across Wisconsin and around the world.

As Fitzpatrick prepares to step-back from his day-to-day reporting with Quest in order to focus on the increased demands from his job working with those with HIV/AIDS, he took time out to speak with me on his experience as a writer and journalist in Wisconsin, his impressions of Julaine Appling and Tammy Baldwin and much more.

### Question: What was the first story you wrote about for the LGBT press in Wisconsin?

The first piece goes back to 1987. It was a story about emotional support volunteers (known elsewhere as AIDS support buddies) needed for CWASG. I also remember sending Ron Geiman stories about the Spring and Fall picnics held by the MNDC in Stevens Point around 1984-85.

### Question: What story was the most interesting/juicy story you wrote about?

Juicy stories? There were several very interesting stories actually. My favorite piece for *Wisconsin IN Step* was the Scott Evertz AIDS

Czar interview. We got the first interview with the gay press nationally. It helped that Scott and I collaborated for several years on Action Wisconsin work.

I also really enjoyed doing the Reality Check columns for *Wisconsin IN Step*. I think some of my best writing can be found there.

My favorite story for *Wisconsin Light* was the exposé on Supreme Court candidate Sharon Rose. Very tabloid — very Perez Hilton — but, with class. I only wish I could have added the many of "off the record" comments from the colleagues who truly detested her.

I think the stories I enjoyed doing most for *Quest* were the GOP sex scandals over the last few years and shedding light on Julaine Appling's long whispered-about live-in relationship with her college "chum" Diane Westphal.

I hope I will be fortunate enough to continue to follow the Travis Swanson-Bryce Faulkner story as it unfolds. Travis is a progressive activist who lives in Oshkosh. His partner Bryce is the poor guy who is now in the hands of Exodus International — forced there by his fundamentalist mom. The human drama there encapsulates what each of us fights in one way or another on a daily basis, even if we are fortunate enough to live and work in the most gay-friendly environments.

### Question: Describe the "sausage making" process of LGBT journalism in Wisconsin. Is there more you know about a story that never gets into print?

I wouldn't call it sausage making. That suggests writers get to sneak in parts that people would be shocked to see if they saw them in their original form. Writing for our community is more like your first high school dance. You try to get through it as gracefully and professionally as possible without stepping on anyone's toes.

Unvarnished truth is not pretty - but it is also very subjective. At the heart of all they do, I think Julaine Appling and Ralph Ovadal truly believe in their version of God and truly expect to die, go to their version of heaven and get whatever is the Christian equivalent of the Islamic jihadists' seventy virgins. My unvarnished truth believes their unvarnished truth is hooey. Who's right? I think I have scientific evidence on my side. Who wins? Who cares? In a hundred years we won't even be trivia questions - we'll be that forgotten.

We all have our agendas. Sorry Fox News,





## Mike Fitzpatrick On:

**Tammy Baldwin:** Class act. One of the few politicians who consistently tries to find the balance of doing the common good and staying elected. Without Tammy, we wouldn't have Fair Wisconsin.

**Mark Pocan:** Excellent political strategist. Without him we wouldn't have the Wisconsin domestic partnership registry. I wouldn't cross him though.

**Don Hoffman:** Had that unique ability to sell snow to the Eskimos. I wonder how Massachusetts is working out.

**Jim Doyle:** Consummate politician who really gets the gay issue. I fear history won't be kind.

**Mark Mariucci:** He's actually a very sweet, caring guy. He won't let you print anything else. Just kidding. Or, maybe not.

**Louis Weiseberg:** Never met the man. He's apparently publishing a gay Wisconsin newspaper that is striving to be as free of Wisconsin gay content as possible. Only *Outbound News* did a better job of that and they lasted seven months. Go figure.

but objectivity is neither fair nor balanced. Unfortunately, telling things exactly as they are will also put a small publisher out of business very quickly. So, much gets left out — or not even reported in the first place.

**Question: There is little recognition and even less pay for a LGBT journalist. So, why bother?**

I guess I personally bothered because there are stories to tell that needed to be heard (or read I suppose). There is hypocrisy that needs to be exposed. And just every once and awhile it really does make a difference.

Something I have always tried to do rhetorically is de-objectify gay and lesbian people. I really detest the plurals (gays and lesbians). We're not a species. We're people with a complex make-up, part of which is our sexuality. Helping readers put our lives in perspective is the main reason I've written all these years.

**Question: What is the current state of the LGBT press in Wisconsin?**

It is exactly as it always has been. People are getting the gay media they deserve. Thanks to the Internet, Google search, Facebook, Twitter, Craigslist, etc. they have more choices now. I'm not sure if a successful business model for a newspaper exists in 2010 — gay or mainstream — Wisconsin or otherwise.

**Question: Fairly or unfairly, Quest is seen by some as a Green Bay "bar publication" and that it does not provide serious news coverage. How do you respond to that assertion?**

Who cares? As long as you are visible you will always have your detractors. Newspapers and their editors have been about as widely visible as you can get in the gay community. Viscous things have been said about every single gay newspaper or editor since Eldon Murray first mimeographed the *GPU News* in the 1970s.

That said, *Quest* is the longest-running, uninterrupted publication in the history of Wisconsin's gay press. It is the only periodical to consistently have a truly statewide gay focus and readership. To his credit, Mark Mariucci has worked very hard to cultivate good working relationships with many community leaders around the state. That's why *Quest* is still around.

**William Attewell is the former publisher of Wisconsin IN Step and Q•Voice magazines.**

**You can follow him on Twitter at <http://twitter.com/williamattewell>**

## Body Beautiful Laser Medi Spa

We offer state of the art technologies

- ☞ Pixel Skin Resurfacing / Mini Facial / Laser Hair Removal
- ☞ Aft Foto Facial gets rid of discoloration in the skin.
- ☞ Hair Restoration Surgery - get more hair starting at \$ 4.00 and up per graf.

### Botox Specials!

Tues. - Thurs. 10am - 7pm / Fri. 9am - 5pm / Sat. 9am - 2pm

2030 Lathrop Ave. Racine, WI 53405 262-638-0300

Located in the Bronze Cap Visit [www.bbllms.com](http://www.bbllms.com) for more info.

## NEW STORE NEW STORE NEW STORE

# Blue

ADULT NOVELTIES • GIFTS • TOBACCO ACCESSORIES

7223 W. Greenfield Ave Downtown West Allis

OPEN: Mon-Sat 10am-9pm 414.453.7223 [blueongreenfield.com](http://blueongreenfield.com)

- Toys, Mags, DVD's
- Unique Pipes
- Great Atmosphere!

**OPEN** VALENTINE'S DAY!  
Sunday Feb. 14th  
10am-7pm

# With Performance Space That's Also an Art Gallery, Milwaukee Gay Arts Center Does It All

By K.Sherry

It's seven-thirty on a snowy Monday evening in Milwaukee's Walker's Point neighborhood. Nestled inside the Milwaukee Gay Arts Center (MGAC) on S. 2nd St, a small cluster of people are holding auditions for an upcoming production of various one-act plays.

"Okay, now show me a series of emotions," says one of the directors. "Starting with fear." And the actor, without missing a beat, crumbles into a terrified little ball, and lets out a rather loud scream.

"Well, that will certainly rattle the neighbors," says Alan Poitrowitz, the MGAC's newest board member, and director of one of the most successful productions here to date – "The Vagina Monologues." Held last March, The Vagina Monologues coincided with the annual recognition of "V" day, to bring awareness to violence against women. It sold out every performance, and raised a healthy amount to donate to women in the Congo.

"It's exciting to do work in this space. There is so much potential here," says Poitrowitz.

With it's hardwood floors, storefront windows, and amazing acoustics, not to mention it's fiercely impressive red wall, the Milwaukee Gay Arts Center secures it's spot as the communities go to place for LGBT art. If you haven't been there, you should.

This March, the small arts center will mark its 5<sup>th</sup> year, as one of the only gay art centers in the nation not affiliated with its city's LGBT center. Milwaukee joins cities such as New York and San Francisco as having a stand-alone gay arts center not part of another entity.

These auditions tonight are not an uncommon scene here at MGAC, or "the GAC" as it's often called. Everything from art shows, to theatre, to live music, meetings, parties and belly dancing, happens in this charming Cream City brick gallery and performance space. In fact, surprisingly a considerable amount has happened in the nearly five years of it's existence, in light of the fact that it is run completely by volunteers and survives on donations, grants, and sales. Lucky for us, the MGAC isn't showing any signs of slowing down.

Tonight, with actors bustling about, QUEST sits down in the spacious back room with MGAC's



Artistic Director Paul Masterson, to discuss just what IS going on in this little gallery that could.

"Well the auditions tonight are for a one act festival at the end of January, entitled 'Gods and Gays.'" Says Masterson. "With everything from Jewish Lesbians, to the Anti-Christ, to an insane nun who thinks we're all going to hell – it should prove to be an interesting night."

With a title like that, one has to wonder if yet again, the MGAC will gain the attention of those who would rather see it shut down than producing any type of art involving gay issues, or characters. Afterall, the MGAC is no stranger to controversy. In 2006, when "Naked Boys Singing" (generally a successful show across the country) was shown by Uncommon Theater, in co-operation with the Milwaukee Gay Arts Center, it drew nationwide attention (along with Christian protestors, and bomb threats) when it was shutdown by the Vice Squad of the Milwaukee Police Department over what the city claimed was the lack of proper licensing. Others cried discrimination.

"Basically, the city asked us to comply with an ordinance that did not apply to us," said Masterson. "They should have known that as a 501c3 charitable organization we didn't need the theatre license

we were asked to acquire" MGAC reopened the show, and a lawsuit against the city was filed to recoup advertising revenue, ticket sales, anticipated legal fees, and punitive damages. The ACLU got involved, and now, three years later, the matter is still pending.

"There is definitely more scrutiny in terms of people being very sensitive to how the LGBT community projects itself," says Masterson. "But on the other hand, there are those who expect the MGAC to push the envelope and be a little bit more confrontational."

On the walls of the gallery this evening however, are images not intended to offend, yet to intrigue and inspire.

"We have this great intern, Pete Stowski a student of MIAD, who was given the project to curate a show," says Masterson. "He came up with 'Geometry Survey' – a series of work exploring geometry. It explores how a range of Milwaukee artists incorporate geometry in their work."

Masterson then leaves to retrieve a small book about Advertising and Homosexuality – the theme of the next gallery offering.

It's a "A Hint of Homosexuality" says Masterson,

# BOOM

Mon. 2-4-1 Taps of Beer  
Tues. \$2 Rail Drinks All Night  
Wed. Balls to the Walls!  
Thurs. 2-4-1 Pinnacle Flavored Vodka Cocktails  
Fri. Beer Bust 5-9pm  
Sat. Beer Bust 2-6 & 2-4-1 Pinnacle Flavored Vodka w/ Shawn  
Sun. Beer Bust 2-6pm with Lance.

Open Mon.- Fri. 5pm with 2-4-1 cocktails 5-8pm Sat. & Sun. Open at 2pm



Saturday, February 13  
Heart-On Party with Adult Star Tony Buff

Thursday, February 18 BOOM's 10 Year Anniversary

Friday, February 19  
ManHunt Party with Adult Star Spencer Reed

2 Great Bars 1 Location where Buddies meet Buddies  
Pool Tables-Darts-Games-Pizza-Patio  
625 S 2nd St Milwaukee (414) 277-5040





"a collection of advertising with subliminal gay messages from the 19<sup>th</sup> century through the 1950's by Bruce Joffe. The collection was previously displayed at the LGBT Center of South Eastern Wisconsin in Racine, where Joffe is currently the Director.

In the spring, Masterson will mount one of the largest projects yet, entitled "The Isis Project," running roughly three months, from April to June.

"Its going to be art shows, cabaret, music, theatre, anything and everything related to the theme of Isis in an LGBT context."

Outside of the gallery, and the performance space, MGAC has hosted or held benefits, receptions, fund raising events and meetings for over a dozen local LGBT organizations, most at no cost. The participating organizations include GAMMA, SAGE, Milwaukee LGBT Community Center, Milwaukee Momentum Women's Football League, PrideFest, SSBL, ARCW, Visioning Project, Lesbian Alliance, and many others.

MGAC is also an active participant in the Saturday Softball League, with their diverse team – Scream.

The space here at MGAC is available for rent for almost anything - commitment ceremonies, concerts - anything that has a potential for drawing a crowd. Many of these events occur while a particular show is still up on the walls.

"Usually the art will stay up no matter what we do, or who we rent to," says Masterson. Rental on the space can be anywhere from \$150 and up, depending on the project, or length of the rental. "We have meetings, luncheons, theatre events, and parties, all sorts of reasons for renting the space."

At times, the Milwaukee Gay Arts Center has found that having "Gay" in the title of the organization can rattle a few feathers. After booking an event in the space, one parent involved in the party refused to attend – leading to a complete cancellation of the event. She found it to be an inappropriate space to bring children.

"It just shows you that there are still people who are reluctant to accept the Gay community based on whatever prejudices they have in their head," says Masterson. "One of the reasons why we call it the Gay arts center was to be who we are and to declare our identity and not hide behind an acronym. Even

## Cakes by Maria Mena Kick off the Annual Blue Party

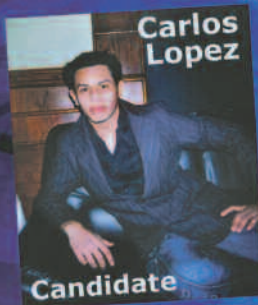
*Cakes by Maria Mena*  
CAKES FOR EVERY OCCASION  
Call for a bridal consultation:  
today by Alfonso Mena, Jr.  
900 S. 6th St. Milwaukee  
Tel. 414-678-8167



To Celebrate the Birthday  
Party of Alfonso Mena  
and Juan Baez  
Friday, February 26

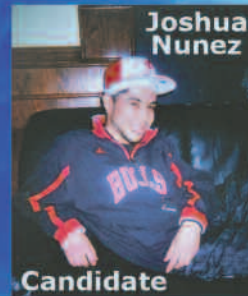


Alfonso



Carlos Lopez

Candidate



Joshua Nunez

Candidate



Eduardo Ferreira

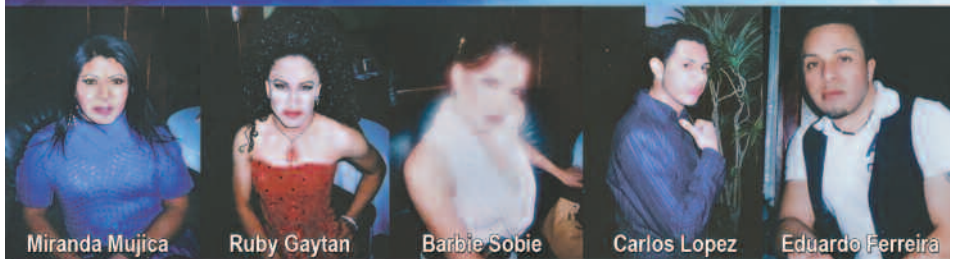
Candidate

## Mr Gay Latino Wisconsin 2010

Jam with  
the Crew  
at  
Tropical  
Nightclub



Coming!  
Mr. Gay  
Latino  
Competition  
Februaury 28  
Door open at 4pm  
Contest starts 6pm



Miranda Mujica

Ruby Gaytan

Barbie Sobie

Carlos Lopez

Eduardo Ferreira

Tropical Night Club Ultra Lounge 626 S. 5th Street Milwaukee, WI 53204

our landlord once suggested we change the name, so we can have more people in the doors. We're just not going to do that."

As the only LGBT establishment on the block not operating as a "gay" bar, one has to wonder if this hinders or helps the gallery.

"I think as long as we have a quasi -gay neighborhood, the gay arts center seems to be appropriately located in it," says Masterson. "We don't really have a gay neighborhood, but 2<sup>nd</sup> Street is the closest thing to it by virtue of the fact that the bars are here. This is as good as place as any, and probably better than some because there is gay activity here."

Trying to secure grants and funding for the MGAC involves an incredible amount of time. "We are all volunteers, so we aren't making any of the money," says Masterson. "Outside of the occasional grant,

funding comes in from art sales, donations, concession sales, and MGAC memberships, and some incredibly generous people in the community.

The MGAC also receives a small amount every quarter from the Pick-n-Save "We Care" process, which helps non-profit organizations raise additional funds through supportive shoppers who use their Advantage Plus Savers Club card. If you shop at Pick-n-Save, consider signing up for the program. It costs you nothing, and helps raise funds for MGAC at the same time.

With a newly recreated website, a growing presence on facebook, and more collaboration in the works, The Milwaukee Gay Art Center is off to a running start for their 5<sup>th</sup> anniversary.

FMI, or to donate, or volunteer, please visit [www.milwaukeegayartscenter.org](http://www.milwaukeegayartscenter.org)



# ART LESSONS

## Olan Montgomery Brushes Up on Gay Hate

By Jason Lumiere

Artist Olan Montgomery paints societal conditions and their affect on the individual. His past collections have shined the light on topics like New York's hidden gay underground, summer resort enclaves like Provincetown and Rehoboth Beach; and Chase Manhattan bank tellers. In his latest collection, "Atrocities", Montgomery presents his most heart wrenching collection yet, depicting some of our nation's most horrific gay hate crimes.

### What message are you conveying through your art?

I encourage viewers to see the individual through color and light. By doing so, one's own humanity can be more fully understood.

### Your recent work seems to focus on the individual.

It always has. Their soul, essence; the wonderful value each person adds for simply being. One person can and has changed the world.

### Like Harvey Milk?

Exactly. I often wonder what Harvey Milk could have accomplished had he had the chance to live. Imagine how much more he would have given to the world.

### Your new collection, "Atrocities", focuses on gay hate crimes.

I am shining the light on people who were horrifically beaten, tortured, and murdered because they were different.

### Is there one piece that speaks loudest to you?

The piece that most tears at my heart out is inspired by the story of Barry Winchell, a military man who was beaten to death with a Louisville slugger baseball bat in his barracks after it was discovered that he was dating a transsexual.

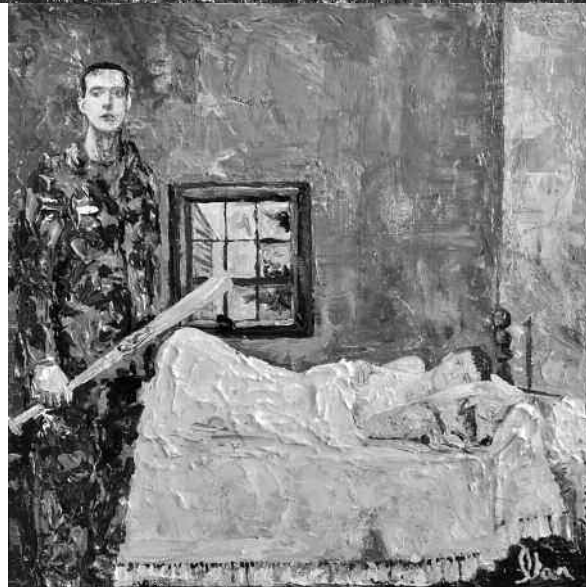
### Was he really awake during the attack?

He lay sleeping in his bed during the attack but I chose to see Winchell waking up. According to the police report, the blood spatter on the wall around Winchell's head was like a halo.

### You take poetic license in several of the pieces, including the painting of Matthew Shepard.

I saw Matthew Shepard begging those boys for his life. They had it within their power to stop what they were doing. I would like to think that at some point Matthew's inner voice and soul took over and gave him a calm. I think there is a calm that comes over us all when we realize that we are not in control of our destiny.

### You incorporate references to historical works in the collection.



The Matthew Shepard piece is inspired by *The Shepherdess*, a painting by French painter Jean Francois Millet.

### The tribute of Gwen Arguro is inspired by Rembrandt's *Rape of Ganymede*.

Gwen was outted as a transsexual at 17, then beaten to death for five hours by three men. They choked her, hit her with a frying pan, tied her up in rope and then beat her with a shovel. The perpetrators used the 'gay panic' defense and were able to get a mistrial. Then, in their second trial, the court determined Gwen's case was not a hate crime because she had sex with several of her assailants. Such injustice.

### Who are the people in *Shut the Front Door*?

The people are figurative and not based on any

real person. They represent my own feelings about how I have been treated by my own country being gay.

### Is that why the capital building is in the background?

The capitol is in the painting because the legislature of the federal government of the United States does not recognize the marriages of same-sex couples and is prohibited from doing so by the Defense of Marriage Act. Again, someone else saying our gay relationships don't hold water against straight ones.

### Have you ever been a victim of a gay hate crime?

All gay people are victims of the biggest hate crime in history.

When politicians can make speeches about us using blanket derogatory statements, comparing us to pedophiles, calling us all kinds of hateful things and they're still allowed to hold office, hell, we're all being victimized.

### Is the gay community doing enough to combat gay hate crimes?

The community cannot combat something we did nothing to incite. What needs to be done is on the backs of every parent. It starts in the home.

### Do we need a leader like Martin Luther King?

How does one find a leader in a world so divided? I would say let's not follow the leader. Instead, let us as a people protect one another and teach acceptance to our children.

### Do you plan to exhibit the collection?

Right now I am just trying to paint, feel and understand the atrocities going on in the world.

### Ultimately, you will sell the paintings. Are these paintings appropriate for living rooms?

I have to look at Jesus Christ being crucified in every church and overzealous Catholic's home. I think the world can stand for us honoring our dead.

### What's next for Olan Montgomery?

I'm painting a series on War along with the Atrocities series. I go between the two to deal with the emotional overflow. I'd say my mind and heart are on fire these days and for all the right reasons.

---

To learn more about Olan Montgomery and his work, visit [lipstickchic.com](http://lipstickchic.com).

## MGAC PRESENTS A DRAMATIC READING OF NEIL HAVEN'S PINK CHAMPAGNE

**Milwaukee** - In spring 2007 members of the Milwaukee Gay Arts Center board of directors attended a performance of *Get a Life* by emerging local playwright, Neil Haven. They decided to approach Haven to write a play relevant to contemporary LGBT life.

The MGAC commission, with partial funding made through the Washington Heights Rainbow Association, resulted in a gay themed comedy, *Sugar Daddy*. It dealt with LGBT family issues from late term coming out to gay marriage. A dramatic reading with Milwaukee theatre personalities Angela Iannone and Richard Carsey took place. When attempts to find funding for a full production through the Milwaukee Arts Board and a local LGBT foundation were unsuccessful, the project had to be shelved.

Haven is currently enrolled at the University of Nevada, Las Vegas, working towards a Master in Fine Arts. Meanwhile, he reworked the play into a new version, *Pink Champagne*. It was produced at UNLV in fall of 2009.

Back in Milwaukee for a production of another of his plays at In Tandem Theater, Haven has enlisted the support of professional actors for a dramatic reading at the

Milwaukee Gay Arts Center. The cast features Angela Iannone, Kurt Ollmann, T Stacy Hicks, Dan Katula and Dylan Zalewski

A talk back after the reading will be lead by dramaturge KC Davis.

The reading takes place Monday, February 22 at 7:30pm at MGAC, 703 South 2<sup>nd</sup> Street in Historic Walker's Point. A \$10 donation is requested at the door. Advance reservations are suggested and may be made at 414-383-3727.

## HAWAII LEGISLATORS KILL CIVIL UNIONS BILL

Lambda Legal and ACLU Plan to Sue

**Honolulu** - Lambda Legal and the American Civil Liberties Union of Hawaii Foundation (ACLU) today announced they are planning legal action against the state of Hawaii following last Friday's failure by the Hawaii Legislature to enact a law providing broad legal rights and duties to the state's lesbia — by a veto-proof 18 to 7 majority the week before, sending the bill back to the House for a conforming vote. Although the House had passed H.B. 444 by an emphatic 33 to 17 margin last year, House members used an anonymous voice vote to kill the bill last Friday.

"Enough is enough. Infinite patience in the face of discrimination is irresponsible," said Jennifer C. Pizer, Marriage Project Director for Lambda Legal. "Our clients suffer every day from unfair taxes and

denial of basic legal protections that every family in Hawaii needs. Because the Legislature has ducked its responsibility multiple sessions in a row, we have no choice now but to bring our clients' legal claims to court."

Hawaii's constitution was amended in 1998 to allow the Legislature to restrict marriage to heterosexual couples, which it has done. This means same-sex couples cannot sue for full equality through marriage. Although civil unions are a lesser status, they would provide a full range of state law protections and duties to gay and lesbian couples, such as relief from unfair state taxation of job-provided health insurance for family members, clear duties to pay child support and alimony as spouses must, protection of the family home against nursing home costs as spouses receive, and other vital protections. The current "reciprocal beneficiaries" system not only fails to provide many basic rights but also sends a harmful message that the state views same-sex couples as less worthy of rights and protections.

"Civil unions offer essential protections but they are old news these days," said Lois Perrin, Legal Director of the ACLU of Hawaii. "It's shameful that Hawaii again validates discrimination — another blot on our history of diversity and fair treatment of all people. Once again, lawmakers' continued failure to support what's fair and right will leave many constituent families vulnerable under the current reciprocal beneficiary laws."

*The Milwaukee Gay Arts Center presents*

# Pink Champagne

*A new play by Neil Haven*

### A ONE NIGHT ONLY STAGED READING

*Gene and Amy, a small-town couple in a strained marriage, chase down their recently outed 17 year-old son to Gene's estranged gay father's house. An impromptu family reunion ensues.*

Featuring the talents of Angela Iannone, Dan Katula, Kurt Ollmann, T Stacy Hicks, Dylan Zalewski, and a post-show discussion with dramaturge KC Davis.

*Monday, February 22<sup>nd</sup>*

*7:30 PM*

*\$10 suggested donation*

**MKEGAYARTSCTR**  
Fine Arts Gallery & Performance Theatre

703 S 2nd Street, Milwaukee, WI 53204

(414) 383-3727

[www.milwaukeegayartscenter.org](http://www.milwaukeegayartscenter.org)







## Argonauts of Wisconsin 36th Anniversary

*Discover  
the chiropractic  
experience for  
your pain relief.*

Call 414-271-1717  
now to schedule your  
free initial visit (a \$300 value)!

**TWC**  
THIRD WARD CHIROPRACTIC, S.C.



Dr. James C. Neuber, D.C.  
Chiropractor  
150 N. Jefferson St.  
Milwaukee, WI 53202  
414.271.1717  
[www.thirdwardchiro.com](http://www.thirdwardchiro.com)

STILL A BLUR?  
WHAT A NIGHT!

M  
O  
N  
A  
S

1407 S FIRST 643-0377

M-O-N-A-S.COM

MYSPACE.COM/CLUBMONAS

TWITTER.COM/MONASMILWAUKEE

FACEBOOK.COM/MONASMILWAUKEE



*The Chanticleer  
Guest House*

4072 Cherry Road (CTH HH) Sturgeon Bay, WI 54235  
866-682-0384 • 920-746-0334 [www.chanticleerguesthouse.com](http://www.chanticleerguesthouse.com)

*Come visit us in beautiful Door County.  
8 suites and 4 cabins on 70 acres.*

*Whirlpools, fireplaces and private bathrooms.  
Heated pool is now open for the season.*

Call Bryon and Darrin, toll free, at 866-682-0384  
or visit us online at [www.chanticleerguesthouse.com](http://www.chanticleerguesthouse.com)

10% discount for  
WOOF'S party  
weekends



**SPAWOOF**

*We pamper your pup from head to tail!*

Boarding • Day Care • Grooming • BARK-N-RIDE™ • Gift Boutique

663-WOOF(9663) • [www.spawoof.net](http://www.spawoof.net)



**De La Rosa Productions presents:**

# Mr. Gay Latino 2010

**Sunday, February 28th, 2010**

Doors open @ 4 pm. Contest starts @ 6 pm.

**D.J. TRINI**  
  
**D.J. LAZ**  


**@ Tropical Night Club**  
626 South 5th Street  
Milwaukee WI 53204

**Tropical**  
Urban Lounge  
RSVP

For Reservations call or text 414.630.6055 or 414.460.6277

## ARCW MEDICAL CENTER

*"Never in the history of AIDS has there been so much promise for helping patients succeed with HIV treatment."*

*"Our goal is to fulfill this promise for all our patients so they can live long and healthy lives."*

John Fangman, MD  
Medical Director

Medical Care    Mental Health & Wellness    Dental Care

Last year 251 new HIV patients chose the ARCW Medical Center for their care joining more than 1,000 HIV patients at Wisconsin's largest provider of HIV health care.

**ARCW 25**  
AIDS RESOURCE CENTER OF WISCONSIN  
Excellence in HIV Health Care

Call for an appointment: (414) 223-6800 or 800-359-8272 extension 6800

**We are excited to announce this issue begins our 17th year publishing Quest.**  
**Thank you readers and of course our advertisers who make the magazine possible.**  
**Please choose Quest advertisers when making your purchase choices.**

**To celebrate, we improved Wisconsin's #1 LGBT website! [www.quest-online.com](http://www.quest-online.com)**  
**New community organizations listings with links • Advertiser Index to find them faster**  
**Clean new look, easy to navigate • Now with OutBound columnists Ruthie, Michael Johnston & Brent**

**It's all about you!**

**LaVita**  
LASER MEDICAL SPA

- ✦ Laser Hair Removal
- ✦ Botox® Cosmetic
- ✦ Skin Rejuvenation
- ✦ Dermal Fillers
- ✦ Lipodissolve




**Before**      **After**

Botox smoothes wrinkles between the eyebrows, across the forehead, and crow's feet

**Purchase 1 area of Botox, get 2nd area 1/2 off**  
**Purchase 2 areas, get 3rd area FREE**

This Valentine's Day, Give A Gift That You and Your Partner Will Both Love

**LASER HAIR REMOVAL**  
**Purchase a package from one area, (Back • Bikini • Underarms • Face • Neck)**  
**Receive 2nd area 1/2 off**  
**Can be used by two people**

All services are performed by licensed medical professionals.  
 We honor your privacy and uphold the client/care provider code of ethics.

**262-784-8888** 13545 Watertown Plank Road, Suite 3 Elm Grove, WI 53122 [www.lavitalaser.com](http://www.lavitalaser.com) Located in Kurtz Realty Building





# CONGRATULATIONS TO DAVID AND BOOM FOR 10 YEARS



FROM YOUR FRIENDS @ MIDTOWNE SPA

**BOOM**

+



=

**A  
NIGHT  
OF FUN!**

**Let's  
HOWL!**



**BEAR**  
club 4 men  
HOMEROSTEAD

**SATURDAY**  
**FEB. 27**  
**9 PM**

**FREE  
FOOD**

**BEER  
BUST**

**\$1  
RAFFLE**  
or buy a ticket with  
a donated food or  
household item to  
SUPPORT  
**ARCW**

**FULL  
MOON  
MADNESS**

**NAPALESE  
LOUNGE** **GREEN  
BAY**

**Avant-Garde®**  
Changing the face of the earth, one needle at a time

Please check out our website at  
[www.avant-garde-piercing.com](http://www.avant-garde-piercing.com)

**Body Piercing your Play on the Game?**  
Then you need a team that has as big a drive as you do!  
At Avant-Garde body Piercing, they know  
what you want and how to get you there.

**7219 W. Greenfield Ave. West Allis, WI**  
**(414)607-4068**



# Nightly Specials

Monday's  
\$2 Night  
**Tap, Rail & Shots**

Tuesday's  
\$10 Beer Bust  
**Tap Beer 9p-1a**

Wednesday's  
\$1 Buck Night  
**8oz Tap Beer & 7oz Bottles 9p-1a**

Thursday's  
\$12 Drink Bust  
**Rail & Tap 9p-1a**

Friday's  
Free Beer 4p-6p  
**w/Food Basket**

## Daily Specials

1p-4p Monday - Friday

**\$5** All-U-Can-Drink  
Tap Beer

\$1 off Rail & Bottles

**Happy Hour**  
4p-8p

**2-4-1 Drinks**  
Rail & Tap Beer

**Relax! Drink! Dance!**

Visit [www.TheShelterClub.com](http://www.TheShelterClub.com) for special offers.



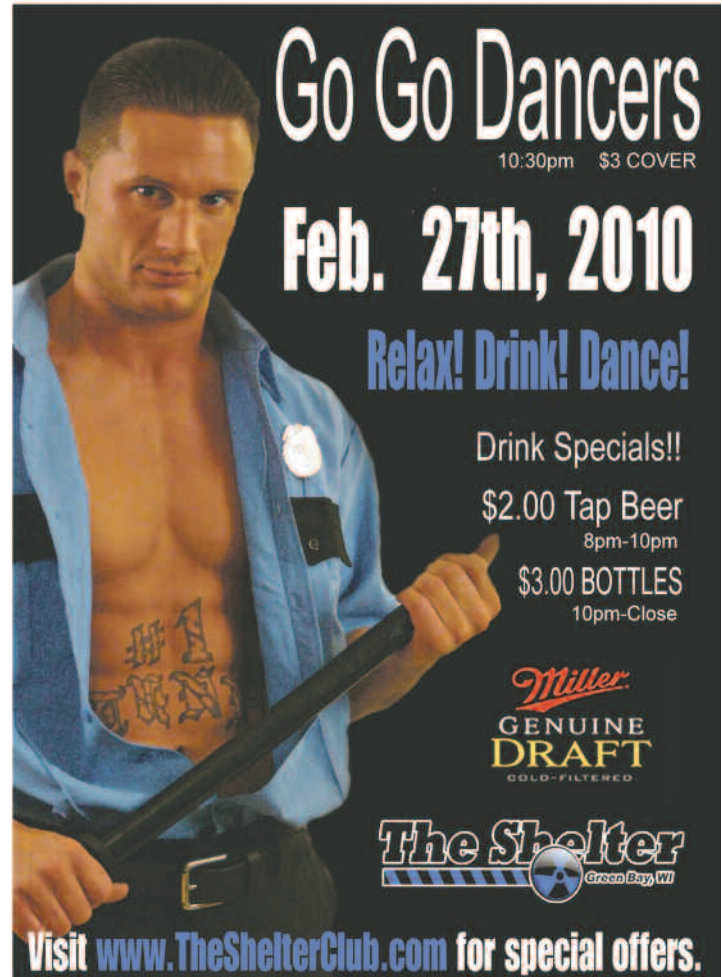
**Feb. 14th, 2010**  
(11am-2pm)

Omelet Bar  
Salad Bar  
Breakfast Bar  
Lunch Bar  
Dessert/Fruit Bar  
Over 30 Total Items

**\$9.50**  
(per person- includes complimentary juice & coffee)

**Sunday Brunch**

730 N. Quincy St., Green Bay, WI 54302  
[www.TheShelterClub.com](http://www.TheShelterClub.com) (920) 432-BOMB(2662)



**Go Go Dancers**  
10:30pm \$3 COVER

**Feb. 27th, 2010**

**Relax! Drink! Dance!**

Drink Specials!!  
\$2.00 Tap Beer  
8pm-10pm  
\$3.00 BOTTLES  
10pm-Close

**Miller**  
GENUINE  
DRAFT  
GOLD-FILTERED

**The Shelter**  
Green Bay, WI

Visit [www.TheShelterClub.com](http://www.TheShelterClub.com) for special offers.



**Friday, February 12**

**LaCage (Milw)** Loveolution Weekend - Happy Anniversary Tras-formation Show

**Napales (Green Bay)** Argonauts Club Night; A sweet heart photo shoot, Have your photo taken with or for your sweetie. Beer/soda bust \$9 Raffle & Prizes . 9 to close.

**Saturday, February 13**

**BOOM (Milwaukee)** Heart on Party! with Adult Film Star Tony Buff

**ICON (Kenosha)** Leather Night

**LGBT Center of Chippewa Valley** Pot Luck - Italian. 6- 9 p.m Please bring a favorite Italian appetizer, entrée or dessert to share & join the camaraderie with friends old and new!

**Outreach (Madison)** W4W sponsors "The Second Annual All Things RE[A]D" Valentine's Day event at OutReach from 3-5 p.m. Share your favorite love poem, haiku, story, or quotation. In keeping with the theme of All Things RE[A]D, bring a red food if you choose strawberries, raspberries, red velvet cake, juicy tomatoes, salsa, red licorice whips etc.

**Sunday, February 14 - Valentine's Day**

**Ballgame (Milwaukee)** HAPPY VALENTINES DAY! Chocolate Kisses open to close plus Cherry Doctors shots \$2.50 and Absolute Raspberry Drink specials too.

**FLUID (Milwaukee)** Hot Fudge Bingo 4pm

**KRUZ (Milwaukee)** Castatways MC Beer/Soda Bust 3-7 pm

**Fat Tuesday, February 16**

**Cardinal Bar (Madison)** Join OutReach & host Ricardo Gonzalez to celebrate Mardi Gras with New Orleans style food & music, a cash bar, dancing with a DJ, 5-9 PM.

**LaCage (Milw)** Mardi Gras Costume Contest Hot Male Dancers

**Thursday, February 18**

**BOOM (Milwaukee)** BOOM's 10 Year Anniversary Party! One Party you will not want to miss. Open at 5pm Food and Drink Specials all Night!

**Friday, February 19**

**BOOM (Milwaukee)** Manhunt Party! with Adult Film Star Spencer Reed

**LaCage (Milw)** Trans-Formations own Glee Club "auditions"

**Midtowne Spa (Milwaukee)** Pornstar Meet-n-greet Breion Diamond from Flavamen

**Saturday, February 20**

**ICON (Kenosha)** Mr & Miss ICON 2010 FMI [www.club-icon.com](http://www.club-icon.com)

**LGBT Center of Chippewa Valley** Movie Night 7pm AMANCIO - Two Faces on a Tombstone

**Madison Gay Video Club** "Hollywood je t'Aime" (Wolfe Rel., dir. Jason Bushman, 2009)  
"Refocus: The Final Climax" (Raging Stallion, dir. Leon, Ward & DiMarco, 2009)

8:00 PM, <http://www.mgvc.org>, 608-244-8690 (evenings)

**Sunday, February 21**

**Franks Power Plant (Milw)** 3Kings Drag Event! \$2 cover, raffles & prizes...10pm showtime... hottest drag show in town sunday night... kings and queens galore

**LaCage (Milw)** Turnabout (benefits a local charity)

**Ravens (Appleton)** PrideAlive Fundraiser - 5pm An Evening of Wine, cheese & Art

**Wednesday, February 24**

**LaCage (Milw)** Entertainer Spotlight Show celebrates 2 Years 2-4-1 all night

**Outreach (Madison)** Q CINEMA Internl Film Group Beautiful Boxer - Thailand (2004)

**Friday, February 26**

**FLUID (Milwaukee)** Black Light Party (Post Office Party) & Puddy's Birthday party with DJ Kelly 10pm

**Saturday, February 27**

**BOOM (Milwaukee)** Doctor's Party with Dr. McGillicuddys 10pm

**LGBT Center of Chippewa Valley** Book Club "Stone Butch Blues", by Leslie Feinberg

**Napales (Green Bay)** Let's howl! Bear Club 4 Men hosts "Full Moon Madness" Free food, beer bust, raffle to help support ARCW (9pm to closing)

**Sunday, February 28**

**Walker's Pint & FLUID (Milwaukee)** Fluid vs Walker's Pint Chili Cook-off

**Wednesday, March 17 - St Patrick's Day**

**Ballgame (Milwaukee)** HAPPY 40th Anniversary Ballgame!! Party of the decade!

**Saturday, March 20**

**Angels Of Hope MCC (Green Bay)** Positive Voice's 2nd Annual Chili Cook-off

**FREE First Meeting**

Available weekdays, weekends and evenings.

*Personalized Attention*

*Hyatt Legal Plan Members Welcome!*

*We Make House Visits!*



*Attorneys Warren J. Klaus and  
Brittany A. Zernicke*

**Klaus Law Office**

*"A family owned & operated Law Firm"*  
5665 S. 108th Street • Hales Corners

*Call for your appointment.*

**(414) 529-2800**

Crivitz/Lakewood (715) 757-2173

[WKlaus8163@aol.com](mailto:WKlaus8163@aol.com)

[brittany.zernicke@gmail.com](mailto:brittany.zernicke@gmail.com)

[www.klauslawoffice.com](http://www.klauslawoffice.com)

\* Notice: We are a debt relief agency. We help people file for bankruptcy relief under the Bankruptcy Code.

**General  
Practice  
Including:**

- Bankruptcy (Chapter 7)\*
- Real Estate including Refinance Document Review
- Estate Planning, including Wills, Trusts and Power of Attorney
- Cohabitation -Partners Contracts -Dispute Resolution
- T-19 / Medicaid
- Probate
- Guardianship
- Adoption
- Traffic
- Municipal
- Juvenile
- Misdemeanor

**Call us  
for:**

**Internet Services  
Web Hosting**

**Athenet<sup>sm</sup>**  
*We'll take you there.*

**Serving  
ALL  
Communities**

**Local  
Fast  
Easy**

1-888-4nobusy 920-954-9799

**[www.athenet.net](http://www.athenet.net)**

Local to over 60 Wisconsin communities

# COMMUNITY RESOURCE GUIDE

## Art, Sports Entertainment Organizations

**Cream City Chorus**  
315 W. Court St. Milwaukee,  
WI 53212 (414) 276-8787  
www.creamcitychorus.org

**Cream City Squares**  
(414) 445-8080  
djdilges@execpc.com  
www.iagsdc.org/creamcity

**Front Runners**  
(414) 332-1527

**GAMMA - Milwaukee**  
PO Box 1900, Milw., WI  
53201 (414) 530-1886  
gamma@milwaukeeegamma.com  
www.milwaukeeegamma.com

**Holiday Invitational Tournament**  
PO Box 899, Milw., WI 53201  
(414) 881-8071  
director@hitmilwaukee.org  
www.hitmilwaukee.org

**Harmony Cafe Appleton**  
233 E. College Ave., Appleton  
(920) 734-2233

**Harmony Cafe Green Bay**  
1660 W. Mason Street  
Green Bay (920) 569-1593  
www.harmonycfe.org  
myspace.com/harmonycfe

**Men's Voices Milwaukee** c/o  
U.C.C. 2717 E. Hampshire St.,  
Milw. 53211 (414) 861-5526  
www.mvmchorus.org

**Miltown Kings**  
myspace.com/miltownkings

**Metro Milwaukee Tennis Club**  
3957 No. 81st St. Milw., WI  
53222 (414) 616-3716  
Moenell@msn.com  
www.milwaukeeetennis.com

**Milwaukee Gay Arts Center**  
703 So. 2nd St. Milw., WI  
53204 (414) 383-3727  
milwagac@yahoo.com  
www.milwaukeegayartscenter.org

**Milwaukee Pride Parade**  
PO Box 070177 Milw., WI  
53207 (414) 607-3793  
www.prideparademke.org

**PrideFest**  
PO Box 511763, Milw., 53203  
(414) 272-3378  
www.pridefest.com

**Saturday Softball League**  
2333 N. 56th St., Milw. 53210  
(414) 350-7147  
www.ssbilmilwaukee.com

**Shoreline Country Dancers**  
2809 E. Oklahoma Ave., Mil-  
waukee, 53207  
info@shoreline-milw.org  
www.shoreline-milw.org

**Wisconsin Gay Hockey**  
(414) 202-5874  
wiogayhockey@wi.rr.com  
home.wi.rr.com/wigayhockey

**Women's Voices Milwaukee**  
315 W. Court St., Milw., 53212  
(414) 534-5645

## LGBT Service and Advocacy Organizations

**Center Advocates**  
315 W Court St. Milwaukee,  
WI 53212 (414) 271-2656  
www.centeradvocates.org

**Charles D Productions**  
315 W Court St. Milwaukee,  
WI 53202 (414) 263-9999  
charlesdprodinc1@sbcglobal.net  
www.charlesdprodinc.com

**Connexus** 1240B E. Brady  
St. Milwaukee, WI 53202

**Cream City Foundation**  
759 N. Milwaukee, Suite212  
Milwaukee, WI 53202  
(414) 225-0244  
director@creamcityfoundation.org

**Diverse And Resilient**  
1240B E. Brady St. Milw.  
WI 53202 (414) 390-0444  
director@diverseandresilient.org  
www.diverseandresilient.org

**Fair Wisconsin** 122 State St.,  
Suite 309 Madison, WI 53703  
(608) 441-0143  
www.fairwisconsin.org

**FORGE**  
PO Box 1272 Milwaukee, WI  
53201(414) 559-2123  
info@forge-forward.org  
www.forge-forward.org

**G/L Community Trust Fund**  
PO Box 1686, Milw., WI  
53201 (414) 643-1652  
glcentermil@aol.com  
www.glcommunitytrustfund.com

**Galano Club** 315 W. Court  
St., Suite 201 Milwaukee, WI  
53212 (414) 276-6936  
mail@galanoclub.org  
www.galanoclub.org

**Gay / Bi Fathers Support Group**  
c/o Outreach, 600 Williamson  
St. Madison, WI 53703  
Serving Dane, Rock, Jefferson  
Counties For location & dates  
e-mail doolguy@charter.net

**Gay Narcotics Anonymous**  
Meets Fridays @ 7 p.m.  
315 W. Court St., 2nd Fl.  
Milw 53212 (414) 276-6936

**Gay Youth Milwaukee**  
PO Box 090441 Milwaukee,  
WI 53209 (414) 265-8500

**Gemini Gender Group**  
PO Box 44211 Milwaukee, WI  
53214 (414) 297-9328

**Human Rights League-Political Action Committee (HRL-PAC)**  
PO Box 510407 Milwaukee,  
WI 53203 (414) 319-9863  
www.hri-pac.org

**Lesbian Alliance**  
315 W. Court St. Milwaukee,  
WI 53212 (414) 272-9442  
lamm@milwpc.com

**LGBT Center of SEWisconsin**  
1456 Junction Ave., Racine,  
WI 53403 (262) 664-4100  
info@lgbtsewis.org

**Log Cabin Republicans**  
PO Box 199, Milw., WI 53201  
(414) 755-1954  
membership@lcrwi.com

**Milwaukee LGBT Community Center**  
315 W. Court St. Milwaukee,  
WI 53212 (414) 271-2656  
www.mkelgbt.org

**Pathfinders**  
1614 E. Kane Pl. Milwaukee,  
WI 53202 (414) 271-1560  
info@tccmilw.org  
www.tccmilw.org

**PFLAG Milwaukee**  
315 W. Court St. Milwaukee,  
WI 53212 (414) 288-9198  
pflagmilwaukee@hotmail.com

**PFLAG Racine/Kenosha**  
PO Box 580058 Pleasant Prairie,  
WI 53158 (262) 694-2729  
pflagkenosha@aol.com

**Positive Direction Milwaukee**  
(414) 461-5894

**Positive Voice**  
PO Box 1381 Green Bay, WI  
54305-1381 (920) 435-4404  
info@pvinc.org www.pvinc.org

**Project Q**  
3215 W. Court St., Milw., WI  
53212 (414) 223-3220  
kurt@projectq.org  
www.projectq.org

**Queer Program**  
PO Box 090441 Milwaukee,  
WI 53209 (414) 265-8500  
queerprgm@aol.com

**Queer Zine Archive Project**  
2935 N. Fratney St.  
Milwaukee, WI 53202  
qzap@qzap.org  
www.qzap.org

**Rainbow Over Wisconsin**  
702 E. Wisconsin Ave.  
Appleton, WI 54911  
www.rainbowoverwisconsin.org

**SAGE Milwaukee** 1845 N.  
Farwell - Ste. 220 Milwaukee,  
WI 53202 (414) 224-0517  
email@sagemilwaukee.org

**Transgender Aging Network**  
6990 N. Rockledge Ave. Glendale,  
WI 53209 (414) 540-6456  
loreecd@aol.com

**UWM LGBT Resource Center**  
UWM Union WG89 PO Box  
413 Milwaukee, WI 53201  
(414) 229-4116  
jrmurray@uwm.edu  
www.uwm.edu/Dept/OSL/LGBT

**Wisconsin Rainbow Alliance of the Deaf**  
Box 353, Hartland, WI 53029  
www.wiscrad.org

## LGBT Social Groups

**Argonauts of Wisconsin**  
PO Box 22096, Green Bay,  
WI 54305

argonews@sbcglobal.net  
www.argonautsl.org

**Bear Club 4 Men**  
Box 13463, Green Bay, 54307  
www.bo4m.com

**Black and White Men Together** PO Box 80395,  
Milwaukee, WI 53208  
(414) 461-5359  
bwmtmilwaukee@aol.com  
www.bwmtmilwaukee.org

**Brew City Bears**  
PO Box 1035, Milw., WI  
53201 (414) 331-3744  
bcb4men-alan@sbcglobal.net  
www.b4men.com

**The Brunch Club**  
jennieragland@wi.rr.com

**Castaways**  
PO 1697 Milwaukee 53202

**Dodge Co. Gay/Bi Men's Social Group of Wisconsin**  
dcmgs@yahoo.com  
groups.yahoo.com/groups/DC  
GMSG/

**Femme Mafia Milwaukee**  
www.myspace.com/fem-  
memafiafank

**Great Lakes Harley Riders**  
PO Box 341611 Milw. 53234  
bootedhog@aol.com

**Men (MenEnjoyNudism)**  
Box 0631, Milwaukee 53207

**N.E.W. Brotherhood**  
Box 12793, Green Bay, 54307  
www.NEWBrotherhood.org

**Rainbow Families**  
c/o PFLAG 315 W. Court St.,  
Milwaukee, 53212  
nkerainbowfamilies@hotmail.com

## LGBT Welcoming Churches

**Angels of Hope MCC**  
3607 Libal St., Green Bay, WI  
(920) 983-7453  
Appleton at UCC Chapel,  
724 E. South River Dr.  
aohmcc@netnet.net  
www.angelsophomcc.org

**Church of Atheism**  
206 Vine St., Eau Claire, WI  
54703 (706) 593-2686  
church\_of\_atheism@yahoo.com  
www.freewebs.com/churchofatheism

**First Unitarian Society of Milwaukee** 1342 N. Astor,  
Milw., 53202 (414) 273-5257  
office@uumilwaukee.org  
www.uumilwaukee.org

**Footstep Fellowship** First  
Presbyterian Church Cjapel  
(715) 355-8641 PO Box 171,  
Wausau, WI 54402  
footstepfellowship@yahoo.com  
www.geocities.com/foot-  
stepfellowship

**Fox Valley UU Fellowship**  
2600 E. Phillip Lane Appleton,  
WI 54915 (920) 731-0849  
www.fvuuf.org

**Lake Park Lutheran Church**  
2647 N. Stowell St. Milwau-  
kee, WI 53211 (414) 962-9190  
office@lakeparklutheran.com  
www.lakeparklutheran.com

**Milwaukee Metropolitan Community Church** PO Box  
2421 1239 W. Mineral St.  
Milw. WI 53204 (414)383-1100  
info@queerchrh.org  
pastor@milmcc.org  
www.queerchurch.org

**Plymouth Church** 2717 E.  
Hampshire Ave. Milwaukee,  
53211 (414) 964-1513  
plymouthchurch@choiceonemail.com  
www.plymouth-church.org

**Preble Park Presbyterian Church** 607 Ravenswood Dr.  
Green Bay, WI 54302  
(920) 468-7125

**SS Cyril & Methodius United Independent Catholic Church** Neenah, WI 54956  
(920) 836-2199  
stcyrilandmethodius@centrytel.net

**Underwood Baptist** 1916 N.  
Wauwatosa Ave. Wauwatosa,  
WI 53213 (414) 258-4246  
office@underwoodchurch.com  
www.underwoodchurch.com

**Union Congregational UCC**  
716 So. Madison St., Green  
Bay 54303 (920) 437-9266  
Fax (930) 437-3765  
unionucc@gbonline.com

**Unity Church of Kenosha**,  
Racine 9220 26th Ave.,  
Kenosha, WI 53143 Rev. Don  
(262) 914-8389  
hellodjd@sbcglobal.net

## Neighborhood Associations

**Bay View GAYS**  
(414) 482-3796  
bvgpresident@bvgays.com  
www.bvgays.com

**Washington Heights Rain-  
bow Association**  
(414) 258-8834  
washhtsrainbow@aol.com  
washingtonheightsrainbow.org

**Wauwatosa Rainbow Association**  
(aka Rainbow Fireflies)  
(414) 774-9470  
tosarainboew@yahoo.com

## Other Service Agencies with LGBT Programming

**Aids Resource Center of Wisconsin**  
820 Plankinton Ave. PO Box  
510498 Milwaukee, WI 53202  
(414) 273-1991  
www.arcw.org

**Brady East STD (BESTD) Clinic** 12240 E. Brady St.  
Milwaukee, WI 53202  
(414) 272-2144  
bestd@execpc.com  
www.bestd.org

**Children Service Society of Wisconsin**  
1212 S. 70th St. Milwaukee,  
WI 53212 (414) 453-1400  
jane.ottow@cssw.org  
www.cssw.org

**The Counseling Center of Milwaukee**  
2038 N. Bartlett Ave. Milwau-  
kee, WI 53202  
(414) 271-2565  
info@tccmilw.org  
www.tccmilw.org

**OutReach**  
600 Williamson St. (Ste. P1)  
Madison, WI 53703  
(608) 255-8582  
www.lgbtoutreach.org

**STD Specialties Inc.**  
32351 N. Holton St. Milwau-  
kee, WI 53212  
(414) 264-8800  
www.STDSpecialties.org

**THERE'S ROOM TO LIST YOUR  
GROUP OR ORGANIZATION  
HERE FOR FREE!**

**email  
editor@quest-online.com**





## Mr Club Pageant at ICON



see all our great photo galleries when you click on the camera icon at [www.quest-online.com](http://www.quest-online.com)



## ASK THE IRREVERENT UNCLE BARBIE Your Intellectual Whore

(An effervescently gay advice columnist)

Disclaimer: Although the author of this syndicated column holds a doctorate in clinical psychology, the tongue-in-cheek advice given is for entertainment only and is not a substitute for therapy. Barbie responds to all emails...whether you deserve it or not. Send questions to askunclebarbie@aol.com

### WELCOME TO NARCISSISTIC ISLAND: POPULATION—YOU!

#### Dear Uncle Barbie,

My sister is the most selfish person I know. She doesn't care about anything or anyone. She sits around feeling sorry for herself and is totally self-absorbed. Her attitude is, "Why should I help others when I have my own problems?" She insists on being the center of attention. Everyone has to pay attention to her and listen to her problems, but she won't lift a finger to help someone else out, not even family. She always claims that she is too depressed to help. What should I do with her? How can I get her to be a kinder, more loving, person?

#### Signed, What to do?

#### Hello To Do,

Sounds like your sister is quite narcissistic. The self dialog in her head probably goes something like this, "Let's focus on me. It's all about me. But enough about me, let's talk more about me. Freud said that infants who receive pleasurable feelings from trying to hold in their fecal matter (or refuse to have a bowel movement while being toilet trained) will develop an adult personality type that resists giving of themselves. Freud called this type of an individual Anal Re-

tentive. It sounds like your sister may be acting in an anal retentive manner by withholding help from others.

There is something you should know about depression: with depression comes anxiety and anger. Therefore, your sister is not only depressed, she is also pissed off! She is dealing with a complexity of emotions. Her refusal to help out anyone else is a manifestation of her anger—at people, life, the world, etc. Unfortunately, she seems to have very poor affect regulation. Consequently, she displaces her passive aggressive tendencies on those around her by refusing to help or care about others. The emptiness of her own life casts dispersions of gloom on others. I have clinical experience dealing with clients that have this same type of dysfunctional behavior. As a therapist, I need to gently encourage the client to be more compassionate. In your case, you can be a bit more blunt. Since she is your sister, you can simply look her in the eye and tell her to get off her dead rear end and help her family.

My clients always come up with excuses like, "I can't listen to anyone else's problems right now. I have to take care of myself. I have to work on me. Maybe after I get well, I can help

others." But what they do not realize is that helping someone else IS helping themselves. It feels good to contribute to someone else's life in a positive way. It is so ironic that they resist doing the very thing that could facilitate their ascent from depression. Conversely, they resist change. They actually appear to relish in their own melancholy. And in the case of your sister, she does not want to be alone in her pain, so she tells everyone around her about her problems. (Jeez, what an attention whore.) As the old saying goes, "Misery loves company." I'm sure it feels good to her to have people give her attention. However, this only serves to reinforce her dysfunctional behavior. My advice to you is not to feed into her pity party. Don't fall into the trap of becoming her enabler by rewarding her narcissism.

**Up and Out, Barbie**





**Links to LGBT news & stories all over the web.  
We search the web for you...**

**www.quest-online.com**



THE MOST TRUSTED NAME  
IN REAL ESTATE

**Nate Mathis**  
Realtor®  
608-669-3448  
nmathis@starkhomes.com

HONESTY  
INTEGRITY  
RELIABILITY





**Robert Rienow**  
Realtor  
920-425-8825  
robert@resource1gb.com



*Proudly serving the LGBT community  
in the Green Bay/Fox Valley area*



## "A Single Man"

One of the great joys of the internet is that one's friends, particularly those with a wicked sense of humor, can see something online that might be cute, funny or in this instance, unaccountably cruel and with a minimum of fuss, dash it off in an email.

Picture then, if you will, on one of those all-too-rare bright and shining January mornings, a morning Glenn himself received just such an email; a most remarkable mis-sive possessing a link to an article entitled: "Single, sad and ultimately shallow."



Glenn was horrified! Could this be the long overdue and sure to be unflattering exposé of the film reviewers for *Quest*?

In point of fact, the email was merely an inquiry as to whether Glenn had yet to make it to a screening of "A Single Man," the new film by fabulous fashion designer Tom Ford. This time, at least, "single, sad and ultimately shallow" referenced the English literature professor played by the recently Oscar™ nominated actor Colin Firth.



Having taken up a seemingly permanent residence at Milwaukee spectacular Oriental Theatre, Glenn imagines that most loyal *Quest* readers will have already gotten to see "A Single Man." Now, for those who haven't, please be aware that spoilers loom immediately ahead.

Based upon a Christopher Isherwood novel, Ford's "A Single Man" follows George (Firth) over the course of a single day. For the previous eight months George's life has been one of unbearable sorrow, ever since the death of Jim (Matthew Goode), the love of his life and partner of 16 years. Literarily exhausted by grief, George is determined to bring his extraordinarily orderly life to an equally orderly conclusion. Companions of a sort, we moviegoers follow George as he painstakingly dresses for his final day at school, tries to reach out to his students during one last class, then clears his desk and empties the meager remains from his safety deposit box. An astonishingly kind man, George even takes time to compliment a most outrageous hairdo (a hair-don't muses Glenn) worn by one of the faculty secretaries.

Fate proves rather mischievous on this final day. First George has a close encounter of the canine variety; later a gorgeous male prostitute (played by gorgeous supermodel Jon Kortajarena) tempts George back to the living. A gin-soaked evening with best gal pal Charley (Julianne Moore) does little to change George's mind, however.

Enter Kenny (Nicholas Hoult), an uninhibited student in George's class. Kenny is rather more successful in recalling George back to the living. Bright eyed and rosy-cheeked, Kenny wears a mohair sweater to class that beggars belief; is this really typical collegiate attire for Southern California circa 1962?

Will Kenny's youth and flirtatiousness win over the despondent George? Or perhaps it will be Kenny's gift of the precious little yellow pencil sharpener?

Much like George, Glenn too would have thrown caution (and clothing) to the wind to experience a carefree evening with a cute, very sweet young man. Given that Glenn doesn't swim, the moonlit nude frolic in the ocean sadly would have been out of the question.

As surely it should have been for George.

## Watch it now, or wait for the budgets...

Visually, "A Single Man" is never less than sumptuous yet perhaps director Tom Ford too freely burdens this simple story with the high gloss rather more appropriate to popular fashion magazines. The three trays of little pencil sharpeners, in shocking primary colors and meticulously placed, are dazzling to the eye in a film boasting an otherwise monochromatic palette yet proves far too self-consciously Warhol & Co. Colin Firth effortlessly emanates a sense of loss; excellent too are Matthew Goode as the beloved boyfriend and Nicholas Hoult is suitably adorable in a role calling for little else. As for Julianne Moore's boozy-turn, it is unlikely she'll count "A Single Man" amongst her successes but if any poor soul is contemplating a remake "Valley of the Dolls," she's your gal.

Isherwood's place amongst the canon of Gay lit is beyond question; no one book pony he. Yet as beautifully as Firth's George suffers, Glenn longed for more flashback scenes with his longtime partner Jim. Their story, their love story, written and published in the closeted world of the 1960s is truly what makes Isherwood's "A Single Man" today so remarkable. That may not be story Tom Ford sought to bring to the screen but it is the story Glenn will keep hoping to see.

## Just the facts...

"A Single Man" clocks in at a nifty 101 minutes

"A Single Man" continues at Milwaukee's Landmark Oriental Theatre as well as cinemas across the country. Gorgeous Matthew Goode can also be found in the recent remake of "Bridehead Revisited" and the fun lesbian romantic comedy, "Imagine Me & You." In his first film, Colin Firth played opposite Rupert Everett in the queer classic, "Another Country."

**Captain-Install Inc.**

car audio • security • marine

**Come Inside and hook up your ride!**

Car Stereo Amps • Speakers • Subs • Auto Alarms • Video/Televisions  
 XM/Sirius Radio • iPod Hook-ups • Neon & Custom Lighting • Window Tinting

**Mention this ad in Quest for 10% OFF your Purchase**

2231 N. Humboldt Ave. Milwaukee WI 414.372.4556 [www.captaininstall.net](http://www.captaininstall.net)





## Mr & Miss Shelter Pageant





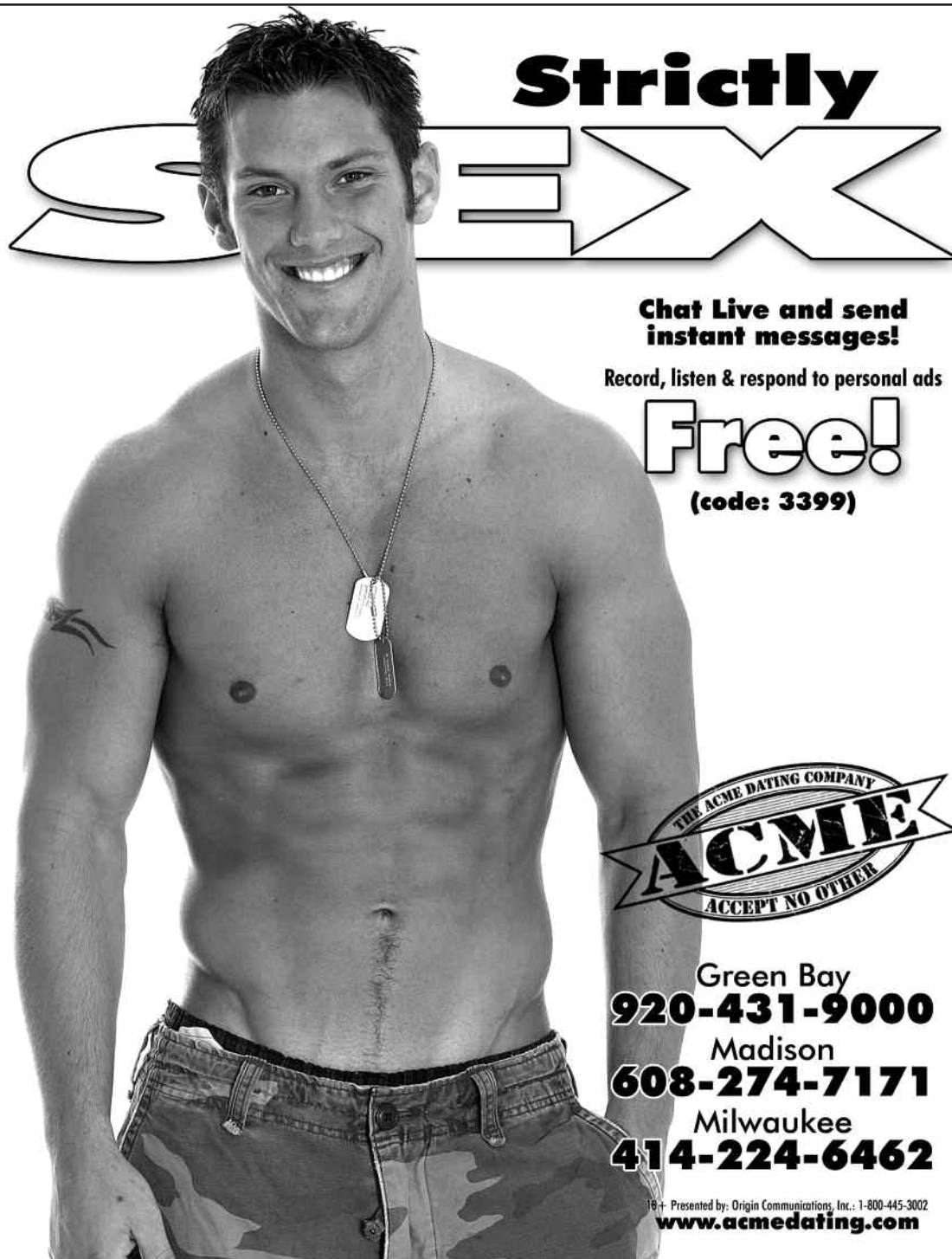
**QUEST  
FREE  
ADULT  
CLASSIFIEDS  
ARE  
NOW  
ONLINE  
ONLY!**

You don't need a computer to place an ad online. Mail your ad to us at  
Quest  
P.O. Box 1961  
Green Bay, WI 54305

If you wish to see all the ads online but do not have access to a computer, simply subscribe and get it sent in the mail along with a fresh copy of Quest.

Subscriptions cost just \$15 for ten issues and \$30 for twenty issues mailed in a plain envelope.

Be sure we can read your address easily when you send in your check for payment.



# Strictly SEX

**Chat Live and send instant messages!**  
Record, listen & respond to personal ads  
**Free!**  
(code: 3399)

**THE ACME DATING COMPANY**  
**ACME**  
ACCEPT NO OTHER

Green Bay  
**920-431-9000**  
Madison  
**608-274-7171**  
Milwaukee  
**414-224-6462**

18+ Presented by: Origin Communications, Inc.: 1-800-445-3002  
[www.acmedating.com](http://www.acmedating.com)



**PROUD TO BE SERVING  
WISCONSIN'S LGBT  
COMMUNITY 16 YEARS!**

P.O. Box 1961 Green Bay, WI 54305  
800-578-3785 fax 920-405-9527

When sending a fax please call us first to activate machine.

email: [editor@quest-online.com](mailto:editor@quest-online.com) [www.quest-online.com](http://www.quest-online.com)

Publisher: Mark Mariucci (ZA)

Contributors: Kate Sherry, Paul Masterson, Glenn Bishop, Anthony Paul, Uncle Barbie, Mike Fitzpatrick, Michael Johnston, Dear Ruthie, Chi Chi,

Printing/Bindery: Port Printers Port Washington

Photography: Milwaukee: William Sharkey Madison: Tony Ritschards

Quest is published bi-monthly, second & fourth Thursday. Distributed free throughout Wisconsin in area bars & businesses that cater to the LGBT community. Quest® 2008 All rights are reserved. Publication of the name or photograph of any person or business in this magazine does not reflect upon one's sexual orientation. All copy, text, photographs & illustrations in advertisements are published with the understanding the advertisers have secured the proper consent for use, and Quest may lawfully publish & cause such publication to be made & save blameless Quest from any & all liability, loss and expense of any nature arising from publication.

**NEXT DEADLINE: Tuesday, February 16  
Runs 2 Weeks - Feb. 25 - March 10, 2010**

**ADVERTISERS - Call for our fabulous low advertising rates!  
800-578-3785 email [editor@quest-online.com](mailto:editor@quest-online.com)**

# QUEST CLASSIFIEDS

## FOR RENT/ROOMMATES

**Fox Cities House Share.** Neenah home all utilities include in nice cozy quite home. Please call 920-558-9639 or e-mail albertwasaway@live.com

Available April/ Upper \$625.00 3240 S 15th Place Milwaukee 10 Minutes from Downtown-Owner lives in lower-One Bedroom/ Living Room / Kitchen / Bath / Washer & Dryer /Nice yard/ email ppetta1@wi.rr.com or call 414-744-0166 [2/24]

Classified ads for Homes & apartments to rent are free of charge. Email editor@quest-online.com or Quest P.O. Box 1961 Green Bay, WI 54305

## Messages

Dodge and Junee County GLBT community. Do you feel a need to have Jesus in your life? Ever thought of attending the MCC in Milwaukee? We are offering rides, carpooling and more information. Please email me at bearhearted@att.net

Dodge County LGBT SOCIAL Group Of Wisconsin: a "Social group for All LGBT people to enjoy the company of their own community. All races welcome discrimination NOT allowed in this Group. Please join & make a difference. Must be 18 www.care2.com/c2c/group/DCGLBTSGOW

## EMPLOYMENT AND HELP WANTED

Looking for a part time offer where you can earn \$1400 to \$2400 every two weeks? Are you dedicated? Over 21? Computer literate? And have access to the internet one to two hours a week? If you answered yes then we have your career waiting for you! Canes Ultralights Inc. is currently seeking store managers, assistant managers, payroll reps and payment clerks to work at your own flexible schedule! And it only takes a little bit of your time! If you think you have what Canes Ultralights is looking for: contact us with your resume to: jordan263canesultralights@gmail.com Hurry...don't wait! This great opportunity is limited so contact Canes Ultralight Inc. today!

## SELL OR BUY

Attractive CD from Milwaukee needs to clean out my dressing room. I have hundreds and hundreds of beautiful fashionable clothing. All items are new. I have bras, panties, girdles, nite gowns, dresses, skirts,

tops, shoes, hosiery and wigs, all sizes. (414)967-4823 ask for Star.

**WANTED TO BUY:** Late 1980's early 90's Z. Cavaricci & I.O.U. shirts, sweaters, jackets etc. Also advertising pinback buttons from Chess King, De-Jaiz & Merry-Go-Round stores. For info: jrotunda@wi.rr.com What were you wearing on Black Friday 1987?

## PROFESSIONAL THERAPEUTIC MASSAGE & REIKI (NON-EROTIC)

Please note: Advertisements are for services provided by professional massage therapists only. Please do not request services that are of a sexual nature.

**MASTERWORK MASSAGE** Relaxation, Deep Tissue, YuenMethod, MatrixEnergetics Spiritual healing, Myofascial release, Nutrition. \$65/hr. \$85/90 min. Joseph (414)839-6682 In Calls Only. Non-sexual. Milwaukee based. *Make a difference in your life!!* Peace. [3/24]

**Nationally Certified Therapist** Break the patterns of stress with a massage patterned for your needs. Based in Madison. Call Rick 608-213-4435

**MASSAGE THERAPY** service provided at your home. Relaxation, deep tissue and sports massage. Claude Gagnon, Wisconsin Certified Massage Therapist #839-46 18 years of experience 414.460.7762 [2/10]

**50 year old experienced massage professional in Appleton** offering relaxation, deep tissue and sports massage. Safe and discreet and available for morning, afternoon, evening & weekends by appointment only. Please call 920-915-4318

**BODYBUILDER!** certified masseur w/ table. 34, 5'9", 50" chest, 30" waist, 220 lbs. German/Italian. Very good looking. Milwaukee/ Bayview area. In/Out. Jeff (414) 690-9706

Email Classified ads to editor@quest-online.com

## Crave More From Your Adult Store?

- 1,000's OF ADULT DVDS, STARTING AT JUST \$5.99!
- ALL \$5.99 - \$21.99 DVDS ARE BUY 2 GET 1 FREE!
- GREAT DVD RENTALS SPECIALS
- TOYS, LOTIONS & LUBRICANTS
- EXOTIC TOBACCO ACCESSORIES



**TAKE \$10 OFF ANY NEW RELEASE DVD**  
LIMIT 3 DVDS. COUPON EXPIRES 2/24/10. NOT VALID WITH OTHER OFFERS.

## 12 GREAT LOCATIONS - ONE CLOSE TO YOU

**Super Video**  
9800 W. Greenfield Ave.  
West Allis, WI 53214  
414-258-3950  
Open 8am-2am, Mon-Sat  
Open Noon-3am, Sun

**Super Video II**  
5049 S. Pennsylvania Ave.  
Cudahy, WI 53110  
414-744-5963  
Open 8am-3am

**Superb Video**  
6005 120th Ave.  
Kenosha, WI 53142  
262-857-9922  
Open 24hrs

**Selective Video**  
2709 W. Beltline Hwy.  
Madison, WI 53713  
608-271-3381  
Open 24hrs.

**Selective Video II**  
3220 Commercial Ave.  
Madison, WI 53714  
608-249-9361  
Open 24hrs.

**City News & Video**  
1606 Pearl Street  
Waukesha, WI 53186  
262-513-8481  
Open 24hrs.

**Supreme Lingerie & Gifts**  
1911 S. Washburn Street  
Oshkosh, WI 54904  
920-235-2012  
Open 24hrs.

**Special Souvenirs**  
9284 Skyline Drive  
Allenton, WI 53002  
920-488-2704  
Open 8am-4am Fri & Sat  
Open 8am-Midnight Sun-Thurs

**Sheridan News & Video**  
12212 S. Sheridan Road  
Pleasant Prairie, WI 53140  
262-694-6769  
Open 9am-Midnight

**Success Video**  
1819 Douglas Ave.  
Racine, WI 53402  
262-638-2435  
Open 9am-Midnight

**Super Video III**  
N6441 5th Ave.  
Plainfield, WI 54966  
715-335-8277  
Open 8am-Midnight

**Select Video**  
16475 W. Russell Road  
Zion, IL 60099  
847-395-6142  
Open Noon-Mid., Mon-Sat

**MUST BE 18 TO ENTER. VALID DRIVER'S LICENSE OR STATE-ISSUED ID REQUIRED.**



# WISCONSIN LGBT BAR GUIDE

## LACROSSE/MADISON (608)

Impulse 132 W. Grand Ave Beloit, (608)361-0000  
My Place 3201 South Ave La Crosse (608)788-9073  
Players 300 4th St, La Crosse (608)784-4200  
Chances R 417 Jay St, La Crosse (608)782-5105  
Off The Wagon/Liquorhole Saloon  
18-24 S River St Janesville (608)359-3209  
Club 5 Bar/Restaurant 5 Applegate Ct  
Madison, (608)277-9700  
Plan B 924 Williamson Street, Madison  
Shamrock 117 W Main Madison (608)255-5029  
WOOF'S 114 King Street, Madison  
(608)204-6222 www.woofsmadison.com

Captain Dix (Rainbow Valley Resort)  
4124 River Road WI Dells, WI (866)553-1818

## NORTHERN WISCONSIN (715)

Scooters 411 Galloway Street,  
Eau Claire (715)835-9959

JT's Bar and Grill 1506 N. 3rd  
Superior (715)-394-2580

The Flame 1612 Tower Ave  
Superior, WI (715)395-0101

The Main 1217 Tower Ave  
Superior, WI (715)392-1756

OZ 320 Washington St, Wausau  
www.totheo.com (715)842-3225

## NORTHEASTERN WISCONSIN (920)

Rascals Bar & Grill 702 E. Wis.,  
Appleton (920)954-9262

Ravens (NEW) 215 E. College Ave  
Appleton (920)364-9599

Napalese 1351 Cedar Street,  
Green Bay (920)432-9646

SASS 840 S. Broadway, Green Bay  
(920)437-7277

THE SHELTER 730 N. Quincy St. Green Bay  
920-432-2662 • theshelterclub.com

XS Niteclub 1106 Main Street, Green Bay

Debs Spare Time 1303 Harrison St  
Oshkosh (920)235-6577

Blue Lite 1029 N 8th, Sheboygan  
(920)457-1636

## SOUTHERN WISCONSIN (262)

Club ICON 6305 120th (Off I-94) Kenosha,  
(262)857-3240 www.club-icon.com

JoDee's 2139 Racine St Racine (262)634-9804

## MILWAUKEE (414)

Art Bar 722 Burleigh, (414)372-7880

1 Ballgame 196 S 2nd (414)273-7474

3 Boom (& The ROOM) 625 S. 2nd St  
(414)277-5040

4 Boot Camp 209 E National (414)643-6900

City Lights Chill 111 W. Howard Ave  
(414)481-1441

5 ETC (Basement level of LaCage)  
801S 2nd, (414)383-8330

6 Fluid 819 South 2nd (414)643-5843

7 Harbor Room 117 E Greenfield (414)672-7988

8 JACK 200 E Washington (414)389-3596

9 KRUZ 354 E. National (414)272-KRUZ

6 LaCage 801S 2nd, (414)383-8330

10 Midtowne Spa (*this is not a bar*)  
315 S Water (414)278-8989

11 Mona's 1407 S. First St (414)643-0377

5 Montage (Upper level of LaCage)  
801S 2nd, (414)383-8330

12 M's 1101 S. 2nd St (414)383-8900

13 Nut Hut 1500 W Scott (414)647-2673

PUMP @ Decibel (Sundays only)  
1905 E North Ave 414-272-3337

PURR 3945 N. 35TH Milwaukee

14 This Is It 418 E Wells (414)278-9192

15 Triangle 135 E National (414)383-9412

Tropical Niteclub 626 S. 5th (414)460-6277

Two 718 E. Burleigh St.

16 Walker's Pint 818 S 2nd St (414)643-7468

18 Woody's 1579 S 2nd (414) 672-0806



### Tony Ritschard

Realtor®

222 W. Washington Ave.,  
Madison, WI 53703

608.279.0305

608.310.8862

ritschty@firstweber.com

Call me for a free market analysis

Free UHP for all clients!



## C3 Designs

Fine Jewelry &  
Original Artwork

8628 A S. Marketplace

Oak Creek, WI 53154

(414) 764-3892

## LandShark

Landscaping & Home  
Repair Services



Specializing in Naturalizing the  
Urban Landscape by Emphasizing the use of Ecologically  
Friendly Plants and Processes.

### Will Sharkey

Environmental Geographer / Landscaper

414-241-5114 sharkatk30@hotmail.com

## Dr. Dennis Ian Jackson PHD

Psychologist

(414)276-8669

11931 West Blue Mound Road, Wauwatosa

(Anxiety, depression, couples, trauma, counseling)

MOST INSURANCE PLANS ACCEPTED



**YELLOW CAB**  
GREEN BAY, WI

920-435-1111

Anywhere...anytime.



# **FINDFRED.COM**

THE REVOLUTIONARY NEW WAY FOR GUYS TO MEET GUYS

## JOIN THE REVOLUTION

PROMOCODE QUEST



**FASTEST  
GROWING M4M  
COMMUNITY IN  
THE WORLD!**

**FUN. EASY. SOCIAL. FREE.**

 MATCH  CHAT  EMAIL  CHARITY

PHASE 2 HAS LAUNCHED: BROWSE PROFILES & EMAIL MEMBERS