

2009 PRIDE GUIDE

QUEST

SPECIAL EDITION VOLUME 16 May 28 - June 14, 2009



The Nation's Biggest LGBT Pride Entertainment Lineup



Cyndi Lauper



Brandy



Etta James



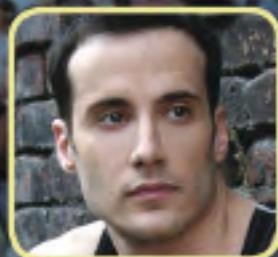
Deborah Cox



September

Jason Antone

DJ Joe Gauthreaux



Over 120 Performers On Six Stages

ARCW MEDICAL CENTER

Wisconsin's Largest Provider of HIV Health Care



John Fangman, MD



Iram Nadeem, MD



Christine Hogan, MD



Steve Debbink, DDS



Ajamu Giscombe, DDS



Sharon O'Dwyer, APNP



Winsome Panton, APRN-BC

The ARCW Medical Center is at the forefront of HIV health care. Our physicians, dentists and mental health therapists offer the most advanced treatment plans with state-of-the-art technology in a patient-friendly environment. They are dedicated to helping you understand your treatment options so you receive the care that is best for you. Patients may also receive legal services, housing assistance, nutritious food and case management from the comprehensive social services programs at ARCW.



Kevin Roeder, PhD



Nadia Damm, PsyD

MEDICAL CLINIC

- Complete medical management of HIV disease
- Treatment of opportunistic infections
- Prescription of HIV medications
- Treatment of general health conditions
- Immunizations
- STD diagnosis and treatment

BEHAVIORAL HEALTH & WELLNESS CLINIC

- Screening & diagnosis of mental health conditions
- Individual and group therapy
- Couples therapy
- Crisis stabilization
- Drug counseling & treatment

DENTAL CLINIC

- Comprehensive preventive & restorative care
- Cleanings & oral hygiene guidance
- Fillings, crowns, bridges & dentures
- Root canal therapy
- Scalings & root planing
- Screening for oral cancer

ARCW

AIDS RESOURCE CENTER OF WISCONSIN

Call for an appointment: (414) 223-6800 or 800-359-8272 extension 6800

WELCOME!

2009 marks two great anniversaries. First, PrideFest enters its 22nd year of celebrating Lesbian, Gay, Bisexual and Transgender (LGBT) pride. The festival has grown from a gathering of hundreds in the late 1980s to being Wisconsin's largest and the nation's most unique LGBT event to date.

PrideFest has the privilege of being both a celebration of LGBT culture and a safe and fun environment for LGBT individuals and allies. The positive energy and unity experienced at PrideFest will continue to further our community's journey toward full equality in Wisconsin and beyond.

Simultaneously, we celebrate the 40th anniversary of the Stonewall riots, a significant part of LGBT history. The 1950s and 1960s were peak times of acts of violence and marginalization against gay individuals. In 1969 at the Stonewall Inn in Greenwich Village neighborhood in New York City, a group of gay and straight activists stood up to the government-endorsed persecution of the LGBT community.

The riots that ensued after a police raid of the Stonewall Inn turned into weeks of an organized, concentrated effort to allow gay-friendly institutions to support and patronize the LGBT community without fear of legal penalties or negative government interference. Following the Stonewall riots, New York City's gay community sparked a flame of acceptance that continues to burn decades later. PrideFest is one of many LGBT events nationwide that was made possible by the brave efforts of so many at Stonewall.

Just as those days during the Stonewall riots, the U.S. is going through change. This country has installed its first African-American president, more and more states are legalizing gay marriage, and the dream of Stonewall and PrideFest is coming closer to reality. Celebrate with us this year as we honor our past, acknowledge our progress in the present, and look ahead to an even brighter future.

Welcome to PrideFest 2009!

Festival Basics

Friday, June 12th, 4 p.m. – Midnight
Saturday, June 13th, 11 a.m. – Midnight
Sunday, June 14th, 11 a.m. – Midnight*

**On Sunday night, the Dance Pavilion will remain open until Midnight; however, the remaining parts of the grounds will close at 10 p.m.*

**PrideFest is co-produced by PrideFest, Inc.
and Quest: Wisconsin's LGBT
News & Entertainment Magazine.**

The PrideFest Office is located in the
Milwaukee LGBT Community Center
Suite 203 315 West Court Street
Milwaukee, WI 53212

414.272.3378 www.pridefest.com

Mailing address:
PrideFest, Inc. P.O. Box 511763
Milwaukee, WI 53203

Publication of the name, photograph or other likeness of any person or organization in the 2009 Pride Guide is not to be construed as any indication of the sexual, religious or political orientation, practice or beliefs of such person or members of such organizations. PrideFest assumes no responsibility for advertisers' claims. PrideFest is a registered trademark. Entire contents ©2009 by PrideFest, Inc. except where specifically noted otherwise. All rights reserved. Reproduction, either in whole or part, is prohibited.

PrideFest's Mission

The mission of PrideFest is to celebrate the diversity of Lesbian, Gay, Bisexual and Transgender (LGBT) culture and community.

Purchasing Tickets

PrideFest patrons have the opportunity to experience a number of benefits: International entertainment, education and advocacy, music and dancing, fun family and youth activities, shopping and dining, drag king and queen performances, and more! Attendees can gain even more benefits by taking advantage of some of PrideFest's special promotions:

Pre-Festival Discount Tickets (available at www.pridefest.com until 5:00 pm, June 11th)

Single-Day Admission – \$13
(save \$2 from gate price)
Three-Day Weekend Pass – \$35
(save \$10 from gate price)
Block of 25 tickets – \$275 (\$11 each)

Festival Weekend Gate Ticket Prices

One-Day General Admission – \$15
One-Day Reserved Seating – \$75
One-Day VIP – \$100
12 years and under – Free

Get the VIP experience at PrideFest! One-Day and Proud Crowd VIP tickets help support the festival's mission and operations while helping you experience PrideFest in Style! You will have access to the VIP Oasis, an exclusive lounge area with great views of the Miller Lite Main Stage, enhanced sound for all headline entertainment shows, and these amenities:

- Complimentary Miller Brewing Products, soda & water
- Complimentary hors d'oeuvres
- Private bathrooms
- Relaxed table seating
- Dedicated bar service



Special Promotions



3 Attraction Pass - \$30

With PrideFest's 3 Attraction Pass, you can get three great venues for one great price. For \$30, patrons receive:

- One admittance to PrideFest anytime between June 12th and 14th
- One admittance to the Milwaukee Art Museum anytime between June 12th and 21st
- One admittance to Discovery World anytime between June 12th and 21st



Free Entrance with donation of four non-perishable food items to benefit the AIDS Resource Center of Wisconsin's Food Pantry

How would you like to obtain free admission into PrideFest AND help a great cause? Just bring four non-perishable food items to the AIDS Resource Center of Wisconsin (ARCW) Food Pantry for free admission. Available 11 a.m. – 1 p.m. on Saturday, June 13th and Sunday, June 14th at the Main Gate.

Milwaukee Journal Sentinel Press Card

Extra! Extra! Read all about it! Card members who show their Press Club Card receive free admission Sunday, June 14th from Noon to 3 p.m.

Additional promotions, including VIP Reserved Seating and Proud Crowd ticketing, is available at www.pridefest.com. Continue to check PrideFest's web site for updates.



June 12th, 13th and 14th, 2009

Midwest Pride Meets On Milwaukee's Lakefront
Henry W. Maier Festival Park
(Summerfest Grounds)

QUEST

Quest Magazine
P.O. Box 1961 Green Bay, WI 54305
800-578-3785

©2009 No portion of this book may be reproduced without permission.

Paper or Plastic? PrideFest accepts both.

All food, beverage and PrideFest merchandise purchases can be purchased directly with cash or by credit card.

PrideFest Task Force and Production Team

PrideFest is produced through the dedicated efforts of a volunteer team. The Board of Directors oversees the festival year-round and the Production Team develops and carries out the day-to-day planning of the festival. The Board of Directors and Production Team are happy to welcome you to PrideFest 2009!

2009 PrideFest Board of Directors

Scott Gunkel - President
Gary Petersen - Secretary
Lorri Aiono Dimoff
Paul Masterson
Peter Minns
Kate Sherry
Jeffrey Schmidt

2009 PrideFest Production Team

Festival Producer	Peter Minns
Accessibility Director	Todd Liebsch
Arts Building Director	Paul Masterson
Children & Family Activities Director	Brendan Barrett
Assistant Children & Family Activities	Eva Williams
Communications Director	Kate Sherry
Assistant Communications Director	Lindsey McKee
Dance Pavilion Manager	Patrick Daly
Entertainment Director	David Charpentier
Assistant Entertainment Director	Will Calder
Box Office Manager	Doug Marcks
Entertainment Hospitality Manager	Annette Holvey
Entertainment Merchandise Manager	Arielle Reed
Entertainment Security Manager	Maribel Santiago
Entertainment Photographer	Daniel Bissing
Food and Beverage Director	Tim Talsky
Assistant Food & Beverage Director	Eloisa Balderas
Hospitality Coordinator	Marie DuCharme
Marketplace Director	Derrick Soto
Assistant Marketplace Director	Sylvester Brown
Merchandise Director	Rob Braun
Miller Lite Main Stage Manager	David Charpentier
Operations Director	George Schneider
Assistant Operations Director	Brian Wilson
Proud Crowd/VIP Director	Mike Bellagio
Assistant Proud Crowd/VIP Director	Martino Angeles
Religious Activities	Jeffrey Montoya
Security Director	Terrance Raffet
Security Assistant	Glen Fallenbeck
Sponsorship Director	Scott Gunkel
Sponsorship Assistant	Lorri Dimoff
Stage Hand Manager	Dave Glenn
Stonewall Stage Directors	Jacqueline Lindo
	Justin Hartman
	Deon Young
	Sean Duerr
	Ritchie Martin
	Greg Bach
	Julie Bock
	Kate Sherry

2008 PrideFest Pride Guide

Published by Quest,
Mark Mariucci, Production and Design
Lindsey McKee, Editor
Kate Sherry, Lead Contributor

PrideAlive

COMMUNITY • DIVERSITY • EQUALITY



JULY 11, 2009 JOANNES PARK

1430 E. Walnut, Green Bay, WI 11am – 10pm

**LIVE MUSIC, ENTERTAINMENT, SPEAKERS,
FAMILY FUN, FOOD & DRINK**

FIVE DAYS OF CELEBRATION BEGIN JULY 8:

including a legal workshop, an art gallery, Pre-Pride kick-off party
including drag performance, a 5k run/walk and post-event brunch.

Visit the web site for more information!

www.newpride.org

Organizational Volunteers

Several organizations provide volunteer support for the beer pods, front gates and ticket booths. Be sure to tip them well, because these groups will keep their tips to support their programming. Organizations providing volunteer support this year include:

Milwaukee LGBT Community Center
Castaways MC
Washington Heights Rainbow Association
16th Street Community Health Clinic
Milwaukee Gay Arts Center
Galano Club
Lesbian Alliance
WISCRAD - Wisconsin Rainbow Alliance for the Deaf
Women's Voices Milwaukee

Volunteer Corps

The Volunteer Corps is made up of hundreds of individuals who volunteer during festival weekend to help ensure that everyone has a good time. Thank you to every member of the Volunteer Corps for their assistance!

Proud Crowd

The Proud Crowd provides an opportunity for individuals and businesses to make a personal investment in the continued success of PrideFest. Proud Crowd members provide important financial support for the ongoing production costs of the festival. Proud Crowd members include:

Larry Andere	Todd Siefert
Alan Steinke	William Zoeckler
Levi Hatelak	Shintaro Tokunaga
R J Mike Nielsen	Raymond Konz-Krzyninski
Daniel Lagerman	Edward Pruessing
Andrew Kliscz	Andrew Schaidler
Robert Hauser	Paul Grant



summertime

Time for Pridefest, walks by the lake, and backyard barbeques where you might meet that special someone. **Be prepared—get tested at BESTD Clinic.** We're celebrating our 35th year doing free HIV testing and STD screening, exams, and treatment.

All of our services are
now available Mondays and
Tuesdays 6 PM–8:30 PM at
our clinic. Some services
only available for men.
See our Web site for details.



Visit us for a free HIV test behind the main gate fountain in the health fair area, 11 AM–5 PM. It only takes 20 minutes!

Brady East STD Clinic • www.bestd.org

1240 E. Brady Street • Milwaukee, WI 53202 • 414-272-2144

The Gay Softball World Series is coming to Milwaukee!



www.series2009.org

August 31 - September 5

4 complexes
37 cities
3,000+ players from the U.S. and Canada
competing all week long!

Here are just some of the highlights:

Aug. 31 – Opening Ceremonies with Thelma Houston at Henry Maier Park

Sept. 2 – Talent Show at the Pabst Theatre

Sept. 4 – Street Bash in the Walker's Point neighborhood district

Sept. 5 – Closing Celebrations at the Harley-Davidson Museum

Come Join the week-long fun through Labor Day Weekend!

Want to be involved? Be a Volunteer!
Join the Beer Club as an Individual Sponsor!
Visit www.series2009.org for more info.

OUR RIGHTS YOUR RIGHTS HUMAN RIGHTS

2009 TWIN CITIES PRIDE CELEBRATION

Boat Cruise 6/20
Picnic 6/21
Festival 6/27-28
Parade 6/28

PRIDE IN CONCERT

Featuring Exposé, Kristine W and Kurt DeLano
SATURDAY NIGHT IN LORING PARK

Concert tickets from STTR/night
Book online at tpride.org/visitors
[graves601hotel](http://graves601hotel.com)

visit tpride.org for details



StarTribune.com



Comcast

surebets



[graves601hotel](http://graves601hotel.com)



Resurance

Parade presented by
CITY PAGES

ID Bracelet: Get carded and stay carded

PrideFest takes a proactive approach to preventing under-age drinking at the festival by using ID bracelets to allow patrons of legal drinking age to purchase alcoholic beverages throughout the festival grounds without being carded every time. All patrons who wish to drink alcohol must show an ID as proof that they are of legal drinking age. Bracelets will be available near the Miller Lite Main Stage and the Dance Pavilion areas. Look for signs marking these areas.

Bracelets must be worn at all times by everyone who will be purchasing or drinking alcoholic beverages. Those who are not wearing a bracelet while drinking alcohol will be escorted to an ID station and asked to provide proof of age.

Fireworks



PrideFest was the first Pride event in the nation to produce a fireworks show and the tradition continues this year at approximately 9:30 p.m. during the Saturday headline show. The rockets will be launched from Lakeshore State Park located east of the festival grounds.

Milwaukee Gay Pride Parade



The Milwaukee Gay Pride Parade Committee organizes the parade, which steps off this year at 2 p.m., Sunday, June 14th on South Second Street between Lapham and Greenfield. For more information about the parade, visit www.prideparademke.com.

Shuttle Service Between PrideFest & the Parade

Two shuttle busses will run down 1st Street throughout the day of the pride parade. There will be three stops along the route, not including the stop at PrideFest. The bus stops will be located at 1st and Oregon, 1st and National, and 1st and Washington. One bus will begin at PrideFest at approximately 1 p.m. and one will begin at 1st and Washington. The buses will run in opposite directions until approximately 6 p.m. For more information, please visit www.prideparademke.org.

ACCESSIBILITY

PrideFest is dedicated to supporting and assisting our patrons who have disabilities. In compliance with the 1990 Americans with Disabilities Act, PrideFest is proud to state that we are continuously striving to make our festival accessible to everyone. We welcome your comments! You can reach us by calling (414) 272-3378 (voice) or e-mailing accessibility@pridefest.com.

Stage Area Seating

During PrideFest, the major stage area, the Miller Lite Main Stage, will offer raised platforms and accessible picnic tables (where marked) for patrons who use wheelchairs. Accessible seating at picnic tables is located throughout the grounds.

Braille Schedules

Braille entertainment schedules will be available at all information centers on the grounds.

Sign Language Interpreters for Performances

Sign language interpreters will be provided for our national acts at the Miller Lite Main Stage in the evening. However, an interpreter can be provided for specific performances upon request by contacting the PrideFest Accessibility Director at accessibility@pridefest.com.

A minimum of two weeks prior notice is required so an interpreter can be secured and materials/lyrics can be obtained from the artist/speaker.

Food and Bar Assistance

If you need any assistance carrying food and beverages on the festival grounds, please ask the food vendor's employee and they will be happy to assist you. Or, please contact a PrideFest "Courtesy Staff" member for assistance.

Drinking Fountains

Drinking fountains are located outside each restroom area and are accessible to all patrons. Drinking fountains can also be found near the Children's Area.

Telephones & TT

Accessible public telephones are located outside of each restroom area. Many of our phones have volume-controlled handsets. A text telephone (TTY) is available behind the Harley-Davidson Roadhouse southwest of the Marketplace.

Wheelchair/Stroller Rental

A limited number of wheelchairs and strollers can be rented during PrideFest. Wheelchair/stroller rental stations are located just inside of the Main Gate. Scooters are also offered by our third-party vendor, APSCO – On the Go, and are available at the Main Gate. Rentals are on a first-come, first-served basis, meaning no reservations will be taken, and all rentals require a minimal deposit.

Please Note:

Service animals are allowed on the grounds provided the animal does not pose a danger or threat to other service animals or patrons. Owners of service animals are responsible for the animal's personal care. A relief area for service animals is located near the Respite Pavilion.

For accommodations for people who are deaf, hard of hearing, blind or have low vision and other services not mentioned, please contact the PrideFest Accessibility Director at accessibility@pridefest.com.



FULL CIRCLE
counseling solutions, LLC
Embrace your potential...

709 E. Juneau Ave., Suite 801
Milwaukee, WI 53202

P: 414.687.0008
F: 414.271.1331

info@fullcirclemilwaukee.com
www.fullcirclemilwaukee.com

Psychotherapy services for:
individuals, couples & families
children, teens & adults
LGBT friendly

TRAVELING TO PRIDEFEST/WHERE TO STAY

DOUBLETREE HOTEL MILWAUKEE CITY CENTRE

611 W. Wisconsin Avenue Milwaukee, WI 53203

Phone: 414-273-2950 Fax: 414-273-7662

1-800-222-TREE

We are pleased to announce that the DoubleTree Hotel Milwaukee City Centre will once again be PrideFest's host hotel. Specially negotiated PrideFest rates will be available at this contemporary downtown hotel that provides close proximity to downtown amenities and features warmly furnished upscale guest rooms. Dine and relax with friends at the hotel's American bistro-styled Avenue Bar & Grill. Maintain your fitness regimen in the well-equipped Fitness Center or unwind by the seasonal, outdoor roof-deck pool. At the DoubleTree Hotel in the center of vibrant downtown Milwaukee, you will experience warm Wisconsin hospitality in the perfect location.

TO MAKE A RESERVATION, visit the personalized PrideFest reservations site at DoubleTree or find it on www.pridefest.com. If you prefer to make your reservations by phone, call the hotel at 414-273-2950 OR 1-800-222-TREE. Be sure to mention that you would like the PrideFest group rate.

General Mitchell International Airport (MKE) is a ten minute drive. Reserved valet parking is available. Also check out VISIT Milwaukee at www.visitmilwaukee.org.

Greater Milwaukee Convention & Visitors Bureau

You can find more information about travel to Milwaukee and its surrounding areas at the Greater Milwaukee Convention & Visitors Bureau by calling (800) 554-1448 or visiting www.officialmilwaukee.com.

HOW TO GET TO PRIDEFEST

For updated information on roadwork, call the Department of Transportation hotline at (800) ROADWIS or visit the D.O.T web site at www.dot.state.wi.us.

Information on the Marquette Interchange construction project, which was completed in 2008, is available at www.mchange.org or call the project hotline at (888) 468-0037.

PARKING AT THE FESTIVAL

Ample parking is available both in privately operated lots and along city streets. Fees vary. Vendors with booth spaces will receive directions to special unloading areas at the gates.

LOCAL BUS TRANSPORTATION

We are pleased to announce that PrideFest receives Festival Shuttle bus service from the Milwaukee County Transportation System. Shuttle service to PrideFest begins approximately one half-hour prior to the start of the festival and ends a half-hour after the event. Shuttles run approximately every 15 minutes along Wisconsin Avenue.

Opening Ceremonies

6 p.m., Friday, Miller Lite Main Stage



This ceremony officially opens the 22nd Milwaukee PrideFest! Since 1987 the city's Lesbian, Gay, Bisexual and Transgender (LGBT) community has assembled to celebrate its diversity and unity in the great Milwaukee tradition of a "fest." Our first Pride gatherings were humble. Attendance numbered dozens, then hundreds and then thousands.

Now, 22 years later, tens of thousands of LGBT people, their friends, families and allies attend the internationally recognized PrideFest. The opening ceremony will begin with the presentation of the United States flag by a color guard of veterans called Do Ask Do Tell, a new LGBT veteran's organization founded in Milwaukee. Corky Morgan will sing our national anthem.

"Stand Up," a song about LGBT Pride, communally composed by local songwriters Tori Fixx, Scott Malcom, Corky Morgan and Yolanda Roth, follows our national anthem. Malcom, Morgan and Roth join Women's Voices Milwaukee in a performance of "Stand Up" arranged by Melissa Beastrom.

PrideFest board of directors' president, Scott Gunkel will then introduce its board, community leaders and sponsors, the people who make PrideFest possible. PrideFest production director, Peter Minns will present the PrideFest Medal for Community Achievement to Milwaukee's Saturday Softball League (SSBL). Following the presentation, Scott Gunkel will officially declare the opening of PrideFest 2009.

TAKE A PART OF PRIDEFEST HOME WITH YOU

The Official PrideFest Merchandise Booth offers a variety of festival products so you can always have something to remind you of the good times at PrideFest. T-shirts, caps, sweatshirts . . . Stop by and pick up a souvenir! The Merchandise Booth is just inside and to the south of the Main Gate.

THE MARKETPLACE

The PrideFest Marketplace

No visit to PrideFest is complete without a walk through the PrideFest Marketplace. With its diverse mix of supportive community businesses and community organizations, the Marketplace offers a unique mix of products and ideas. Marketplace vendors come from all over the country to be a part of PrideFest. Below you will find a partial list of LGBT and LGBT-friendly businesses and organizations participating in the Marketplace for PrideFest 2009. Many more exhibitors will be added after the Pride Guide publication deadline; however, following are the 2009 vendors as of publication:



Marketplace 2009 Vendors

Accupuncture & Holistics Health Associates	Lake 94.5
Air Brush Tattoos By Evin Goedtel	LGBT Center of SouthEast Wisconsin
Annapurina Treasures	Liberty Gifts
Asian Creations	Milwaukee LGBT Film Festival
Blue Green Corporation	MRM
C-3 Designs	Northern Sun Merchandising
Centaur Entertainment	Oriental Craft & Development
Central Bark Doggy Day Care	Our Lives
Children Service Society of Wisconsin	Out! Wear
Chiropractic Care Center	Outwords Books
City of Milwaukee	Planned Parenthood
Collagen Water	Pride By Designs
Dance Heads Milwaukee	PrideFest Merchandise Booth
Democratic Party of Wisconsin	Pro Tech Wireless
Designs in Wire	Progress Label Clothing
DITC "Dykes in the City"	Renaissance
DJVU Karaoke	Richard Arfsten Enterprises
Ecuador Manta	Risque Business
Equality Wisconsin	Ritz Lazer Care
Ethnic Henna	South East WI Congregations (SEWUUC)
Event Toyz	Starship Tattoo
Fair Wisconsin	The Iron Horse Hotel
Famous Cigars	The Law Centers for Children & Families
Fusion Radio Chicago	The Modish
Glass Rainbows	The Onion
Heart of the Sky	The Tool Shed
Home Pride Remodeling	TimberTech
Human Rights Campaign	Twin Cities Pride
Illumine Titanium LLC	USA Sunglasses/Forever Sunglasses
I'm Fun T-Shirts "A&J Promotions"	Verizon Wireless
Jam's Jewels	Weather Tight Corporation
KB Designs	WI Humane Society
Kitchen Craft	Windy City Times



EAT, DRINK & BE MARY! (UMM... MERRY!)

With many food vendors serving a variety of delicious entrees, PrideFest has something for every taste. Beer, wine, water and soda will be available at several booths throughout the grounds. Current food vendor menus can be found online at www.pridefest.com. Enjoy! Many more exhibitors will be added after the Pride Guide publication deadline; however, following are the food vendors as of publication:



3B Concessions	Nuline Homemade Ice Cream
Aladdin	Olde Country Style Almonds
Anderson Corn Roast	Pacific Orient
Bella Caffè	Rainbow Babo Tea
Country Time Kettle Korn	Riviera Maya
Cousins Subs	Scardina Bakery & Deli
Dairy Treat Shop	Saz's BBQ
Joey's Seafood	Sil's Drive-Thru
Kick'n Chick'n	Toner Des Concessions
Mader's	Wisconsin Fried Cheese Curds
Maui Wowi Smoothies	

LGBT HISTORY PROJECT

2009 marks the 40th anniversary of the Stonewall Riots, the event that is popularly recognized as producing the modern gay and lesbian rights movement. Through a series of displays and exhibits, the Milwaukee LGBT History Project explores the profound impact of this event on Milwaukee during the 1970s. Exhibit-goers may view contemporary television coverage of the local gay and lesbian rights movement, see selections from the archives of the Gay Peoples Union and gay activists, map the location of gay bars and other hang-outs, and place themselves in a timeline of Milwaukee gay and lesbian life from the 1960s to the present day. Look for the LGBT History Project exhibit in a new location: a large tent just north of the Miller Main Stage.

INTERFAITH SERVICE

Clergy from a variety of local LGBT-inclusive congregations will guide you through an experience of "Sacred Connections." We are all linked together in a variety of ways. We will bring our connectedness and unity to consciousness with prayer, music and inspirational readings. All are welcome.

Join your sisters and brothers from diverse faiths, as we enjoy beautiful music, an inspirational message and embrace our spirituality in this beautiful outdoor venue! This year's service will take place at 6 p.m., Friday, June 12 on the Stonewall Stage.

BE PART OF THE CHOIR! The choir will practice on Sunday, June 7 at 2 p.m. at Unitarian Universalist Church West, 13001 W. North Avenue, Brookfield, Wisconsin 53005. Contact Ruben Piirainen 262.782.3535, rubenp@uucw.org for more information.

GROUP CELEBRATION OF OUR RELATIONSHIPS (Formerly the Mass Commitment Ceremony)

Recognizing your relationship at the festival's beautiful lakefront location can help make your experience even more memorable. Clergy will be on hand to lead a beautiful service of celebration and blessing. All couples will receive a certificate, flowers, and partake in a wonderful cake (compliments of Simma's Bakery). Register online at www.pridefest.com before the festival or at the Love of God Cathedral booth during the festival. Please note: NO VIDEO CAMERAS ARE ALLOWED ON PRIDEFEST GROUNDS.

CHILDREN & FAMILY ACTIVITIES

Wisconsin Rainbow Families and PrideFest are pleased to present a variety of activities and events for children of all ages on Saturday and Sunday. The 2009 Children's area continues its focus on providing a balance of activities and entertainment for LGBT and alliance families! From magic, to comedy, to the exploration of chemical reactions, there is something for everyone! All day activities (Saturday and Sunday 11:30 a.m. – 6 p.m.) include inflatables, kids train, face painting, arts and crafts, and jungle gym.



YOUTH ACTIVITIES

Teens have activities to celebrate pride as well. Youth can enjoy fun events tailored especially for them. Youth activities take place on the Youth Stage.



SKYGLIDER

The SkyGlider will be open to give you a birds-eye view of PrideFest. For a small fee, you can take a ride above the treetops and check out PrideFest the way the seagulls see it. The SkyGlider is located on the north end of the grounds near the Dance Pavilion.

THANK YOU TO OUR MEDIA SPONSORS!

QUEST	Quest
OUTBOUND	Outbound
WINDY CITY MEDIA GROUP	Windy City Media
Free Press	Chicago Free Press
OL	Our Lives
the ONION	The Onion
Gay Parent	Gay Parent
ISTHMUS	Isthmus
Shepherd	Shepherd Express
4PM	4PM
Gay Chicago	Gay Chicago



If you share your life with a dog or a cat, you know that a long, happy life for your pet begins with good health. And good health involves periodic physical exams, to pinpoint any current conditions and to help prevent future problems.

We're offering a free comprehensive physical exam to new clients. Call for an appointment. We look forward to seeing you!

Brown Deer Animal Hospital • 8745 N. 51st St. • (414) 355-2603

**Rachel Chiasson, D.V.M. • Marni Schmidt, D.V.M.
Penny Ness, C.V.T., Owner**

**Offer expires 8/31/09. One free exam per household.
Please mention code PF091 when making appointment.**

GETTING TO KNOW THE GROUNDS

Key Points of Interest

MILLER LITE MAIN STAGE

Sponsored by Miller Lite
Located in the heart of the PrideFest grounds, the Miller Lite Main Stage presents a non-stop lineup of national and regional acts.



DANCE PAVILION

Featuring the PUMP!
DJ Showcase
Sponsored by PUMP!, Decibel Nightclub and Centaur



During the day, the Dance Pavilion provides a host of performances. At night, the space becomes the biggest outdoor dance party on Lake Michigan! Located north of the main gate entrance and fountain area.

HEALTH & WELLNESS AREA AND STAGE

Sponsored by ARCW, BestD Clinic, Cream City Foundation, Milwaukee LGBT Community Center, Diverse and Resilient, and FORGE



Returning for a second year, this area, located directly inside the Main Gate with the Health & Wellness Stage at the Lake Michigan end of the area, will provide information and activities for those seeking healthier lifestyle choices. Want to stop smoking? Eat healthier? Stop on by for helpful tips and fun activities!

ARTS & HISTORY PAVILION



Sponsored by
The Milwaukee
Gay Arts Center

Located in an enclosed building just north of the Dance Pavilion, the PrideFest 2009 Art & History Pavilion presents a special exhibition by the Saturday Softball League, a video program by the Milwaukee LGBT Film/Video Festival and an art show by the Milwaukee Gay Arts Center.

MILWAUKEE LGBT HISTORY PROJECT

Sponsored by Quest and SAGE
The LGBT History Project exhibit is in a new location: a large tent just north of the Miller Main Stage.



STONEWALL STAGE



Sponsored by Lesbian Alliance of Milwaukee

This smaller stage area hosts intimate performances and discussions on topics important to the LGBT community. You will find it located just north of the Main Gate entrance.

YOUTH STAGE

Youth have the opportunity to enjoy PrideFest as well. Various programming for children and teenagers is available throughout the weekend. The Youth Stage is behind the food vendors, east of the Marketplace.

CHILDREN AND FAMILY PLAY AREA

Sponsored by
Wisconsin Rainbow Families

Take a break with the kids in the playground, located between the Miller Lite Main Stage and the lakeshore.



FOOD VENDORS

Several restaurants and other food vendors can be found to the east and north ends of the Miller Lite Main Stage and throughout the grounds.

MARKETPLACE

Need to shop? We can help. Visit the Marketplace on the south end of the Miller Lite Main Stage for a great variety of business vendors.

ORGANIZATIONAL VENDORS

Learn about and support local and national LGBT and LGBT-friendly organizations. Their booths can be found throughout the grounds stretching from the main gate entrance to the lakeshore.

DANCE
With the Stars
Cream City Squares!
Square dancing like you've never seen it!

High-energy Fun
Jeans and t-shirts OK

Drop in any time.
Exercise your body AND your brain!
No partner required.

We'll teach you all you need to know
Beginning September 2009!

www.iagsdc.org/creamcity

Alcohol-free and smoke-free space.





Not Available In Any Suburb

GRAND RE-OPENING — MOVE IN TODAY!

We're proud to announce the grand re-opening of The Point On The River. Ideally located at the confluence of two rivers, these true urban soft lofts are in a neighborhood that is not only thriving, but known for its innovation and savvy dwellers. Surrounded by stunning city views, the Third Ward neighborhood, and the coveted riverwalk, The Point offers residents many features not found any place else. Access to the marina and boat slips, controlled access lobby with concierge service, business board room, heated indoor parking and wellness center. And there's never a dull moment with our private screening movie theater and social networking lounge.



You need invest no more time looking, just get to The Point. One and two bedroom soft lofts available from the \$200's to over \$1,000,000.



Open daily 11am - 6pm

106 W. Seeboth St. Milwaukee, Wisconsin 53204 414.298.1600 ThePointOnTheRiver.com

GOLF FORE EQUALITY

SUPPORTERS*

The Prudential Insurance
Company of America
Ritz Holman Butala Fine LLP
VM Promotions
Ernst & Young
Gravity Marketing
Zilli Hospitality Group
Milwaukee Public Market
Milwaukee Art Museum
Dick's Sporting Goods
Emerys
PF Chang's
Milwaukee County Zoo
DoubleTree Hotel - Milwaukee
Bedout Snappers
in honor of

August 29, 2009

registration at **11:30AM**
shot gun **1:30PM**

DINNER ONLY TICKETS AVAILABLE

Silver Spring Country Club
N56 W21318 Silver Spring Dr.
Menomonee Falls, WI 53051

www.GolfForeEquality.com



PRIDEFEST 2009 FRIDAY STAGE LINEUP

Friday, June 12 4 p.m. – Midnight



4 p.m.
FLY BY STEREO
Miller Lite Main Stage
Leah Jee is ready to rock at PrideFest again this year with her new band Fly By Stereo. Known for its punk-infused pop rock, Fly

By Stereo delivers an unmatched level of intensity and energy at every show. The San Diego band will make several stops in Milwaukee on its nationwide tour this summer. www.flybystereo.com
www.myspace.com/flybystereo

4:30 p.m.
MR. AND MISS
PRIDEFEST PAGEANT
Dance Pavilion

We were very pleased to see a great turnout last year and hope for even more contestants this year! Winners of the competition will receive a crown, a sash, and eligibility to compete for Mr. and Miss Club Wisconsin. For more information, visit www.pridefest.com.



5 p.m. CORDAY
Miller Lite Main Stage

Corday is an award-winning performer from Long Beach, California who will win you over with her charm, wit and red-hot



intensity! Her accomplishments include 3 critically acclaimed albums, hit singles such as "Superhero" and "Redneck Lesbo," performances at pride festivals nationwide, producer and host of a monthly Girl Rock video, and writer and featured artist for Curve Magazine.

www.corday.net
www.myspace.com/jennifercorday

6 p.m.
PRIDEFEST OPENING CEREMONY
Miller Lite Main Stage



PrideFest officially begins with a group of Lesbian, Gay, Bisexual and Transgender (LGBT) community leaders, allies and dignitaries declaring PrideFest "open" and welcoming our guests, artists, friends and family to celebrate another year of pride. Please join us at the opening ceremonies for PrideFest 2009 to kick off the festival.

6 p.m.
INTERFAITH PRAYER SERVICE
Stonewall Stage

Join your sisters and brothers from diverse faiths as we enjoy beautiful music, an inspirational message and embrace our spirituality in this beautiful outdoor venue! This year's service will take place at 6 p.m., Friday, June 12 on the Stonewall Stage. The participating clergy and congregations include:

Rev. Gail S. Rautmann, Village Church
www.villagechurchmilwaukee.org

Rev. William G. Utke
Emanuel United Church of Christ
www.emmanuel-ucc.org

Rev. Suzelle Lynch, Unitarian Universalist Church West
<http://uucw.org/>

Bishop Craig Bergland, EFR
Rev. Deacon Mike Wilson
Love of God Cathedral Universal Anglican Church
<http://loveofgodcathedral.org>

Rev. Jamie Washam
Underwood Memorial Baptist Church
www.underwoodchurch.com

Rev. Karen Hagen, Tippecanoe Church
www.tippecanoechurch.org

Rev. Wendy Woodruff, Milwaukee MCC
www.milmcc.org

OUT. PROUD. LOUD.

ALL WEEKEND LONG, THIS IS WHERE THE PARTY'S AT!

FRIDAY THE 12TH SWITCH
SWITCH ON YOUR WEEKEND WITH DJ DAVID E
HOT BOYS, HOT BARTENDERS, AND HOT DANCERS

SATURDAY THE 13TH
CHICAGO'S BEST CLUB DJ
PHIL DABEATZ

PARTY ON OUR FABULOUS PATIO
AND PARK FREE IN OUR LOT!

200 EAST WASHINGTON

Phil DaBeatz
CENTAUR MUSIC'S
POPULAR DJ

Hello! My Name Is
Jack

6 p.m.
GRAND DIVAS OF WISCONSIN
Dance Pavilion

Wisconsin's most seasoned female impersonators take the stage. Be ready for glitz and glamour galore.
www.joelevanmusic.com
myspace.com/joelevanmusic



6:30 p.m. MAJOR TOM
Miller Lite Main Stage



Comprised of a British singer/songwriter/guitarist, a Californian bass player, and a Midwest drummer, Major Tom pays homage to heroes of the past with a new fresh scent, stinking of glam and classic rock n' roll. The group's first full length CD is poised for release. Meanwhile, fans can check out Major Tom's singles "Songs About Your Wife" and "All That Glitters" online. www.myspace.com/majortomroxx

7 – 8:30 p.m.
PUMP! DJ SHOWCASE - DJ BRETT LOCASCIO
Dance Pavilion

Energy is the one word that describes DJ Brett Locascio's sets. Since 2005, Brett has become a Chicago crowd favorite with his big room vocal sound that keeps the dance floor bumping all night long. His selection of popular music keeps guests in clubs into the morning hours dancing to their favorite anthems.



www.reverbnation.com/djbrettllocascio

8:30 p.m. JASON ANTONE
Dance Pavilion

Jason Antone has had three amazing years making an impact on the music industry leading up to his full-length release, "Start to Move." Billboard charting singles "With You" in 2006, "Be Free" in 2007, and "Love's Gonna Lead You Back" secured a place for Jason in the music industry and propelled Jason into his own artist with his own vision.
www.jasonantone.com
www.myspace.com/jasonantone



9 p.m. – Midnight
PUMP! DJ SHOWCASE
Dance Pavilion

PUMP!

9 – 10:30 p.m. DJ RON G

A Hawaiian-born Filipino, Ron grew up on the north-side of Chicago. Ron has had the pleasure of spinning in many clubs in Chicago and was a participant in the PUMP! Showcase at PrideFest 2008, where he DJed as well as danced with flags and poi.
<http://www.rongdj.com>
myspace.com/dancinman60139



Happy Moments Happy Memories

Happy Pridefest Milwaukee!

From your friends @
**CLUB
Icon**



**Stop in and taste our
new frozen cocktails on special
all SUMMER LONG!
With a variety of flavors
guaranteed to quench your thirst,
get you buzzed, & cool you down.
Now THAT'S Multitasking!**



Club ICON is located at 6305 120th Ave., Kenosha, Wisconsin.
Conveniently situated between Chicago and Milwaukee
We are North of Hwy. 50, on the Frontage Road East of I-94.
(Exit 344, Kenosha/Lake Geneva)
 Visit us on the web for hours, specials and information about all our events:
www.club-icon.com

10:30 p.m. – 11:45 p.m. DJ KELLY
 Milwaukee's DJ Kelly started out as a mobile DJ almost 20 years ago. After getting out of the mobile music biz and after quite a few years of bowling alley discos, Kelly has landed residencies at many bars and clubs in and around Milwaukee. He is a PUMP! staff member, helping out with sound, lighting and video.
www.myspace.com/djKellyMKE



ever since. Russian Wulfgar, Banshee Om, and Vegalume Redstart unite their talents with fire poi, fire hoop, fire staff, fire fans, fire rope and glow tools into a show that will not be forgotten.
<http://www.myspace.com/firesirens>

7 – 11:45 p.m. VJ BRYE
 Big screens! Mental motion video madness! VJ Brye brings the visual component of a great night out every time he fires up his projectors. Surrounding himself with computers, controllers, effects processors, DVDs and cameras, the only missing ingredients to his visual gumbo are bangin' beats and a good vibe.
www.MySpace.com/vjBrye



PLUS SPECIAL EFFECTS BY: THE FIRESIRENS
9 – 11:45 p.m.

The FireSirens come to us from the deserts of Black Rock City, Nevada. They formed in 2002 and have been captivating audiences





[join the revolution]

tools for the revolt: www.mkegggb.com

Ad Sponsored by Jack H. Smith of
Shorewest Realtors www.JackHSmith.com



- Miniature Golf
- Arcade Games
- Food
- Party Room

NOW OPEN!
A Family Entertainment Center in the Heritage Village Mall (formerly Beaver Dam Mall)

Please visit our web-site at www.fyizone.net or call 920-885-3881

2 in 1 On One Round of Miniature Golf

inCHARGE.

Coming your way
a new website

incharge.com




THIRD WARD CHIROPRACTIC, S.C.
Dr. James C. Neuber, DC
Chiropractor, Member WCA
Member NCC Alumni,
Member ACA

Call Today! (414) 271-1717

\$300 Value	FREE	\$300 Value
INITIAL VISIT Includes private consultation with doctor, comprehensive spinal exam and necessary x-ray with this coupon.		THIRD WARD CHIROPRACTIC 150 N. Jefferson St., Milwaukee, 53202 (414) 271-1717

Mention this ad when making your appointment. Hurry! Offer expires 7-31-09. No Cash Value, Medicare excluded



Judith Kubish
celebrant

www.heartlandlifeceremonies.com
judith@heartlandlifeceremonies.com

921 W. Glendale Avenue
Glendale, Wisconsin 53209
414-731-6340

Heartland Life Ceremonies
your commitment ceremony... your way
Custom ceremonies to celebrate life's passages



WOOF'S

MADISON



MONDAY THRU FRIDAY
Happy Hour 1/2 Price Drinks 4-7pm • Darts • Pool

TUESDAY'S
Pool Tournament Cash Prizes

WEDNESDAY'S
Wii Tournaments, Hump Day \$2 Tap Beer, 2 for 1 Martinis

THURSDAY'S
Bear-a-oke 6-10 PM **Get Bombed** Bomb Shots \$1 Off

FRIDAY'S
Tail Waggin' Shot Specials Dog Den open at Midnight

SATURDAY'S
Woof's Parties Live DJ • Dog Den open at Midnight

SUNDAY'S
"Make Your Own" Bloody Mary Bar • Bear-Beer-Bash \$2 Taps And Free Pizza

114 King Street • woofsmadison.com

Jack H. Smith...

- Company Sales Leader
- 23 years in Real Estate Sales
- Luxury Home Marketing Specialist
- Certified Relocation Expert
- Unsurpassed Personal Service

Proud to Support the 2009 Pride Festival



CALL JACK NOW!

414-226-2013

Office 414-226-4761, Ext. 199

E-mail jhsmith@shorewest.com

Internet jackhsmith.shorewest.com

ENR

ShoreWEST
REALTORS®

shorewest.com

Experience the Power of Touch

Reiki (a gentle form of touch therapy) for
relaxation, stress relief
and natural healing

Milwaukee Reiki LLC
www.MilwaukeeReiki.org
414-793-4828

Sunday Worship
10:00 a.m.

Village Church ELCA  **ALL Are Welcome!**

www.VillageChurchMilwaukee.org
130 East Juneau Avenue • Milwaukee, WI 53202

BAY VIEW GARDEN AND YARD SOCIETY

Bay View GAYS—gay, lesbian and gay-friendly
people living in the Milwaukee area who share
a love of gardening and their community.

- ▶ Supporting public gardens
and community projects
- ▶ Social gatherings





For more information, e-mail
bvgpresident@bvgays.com

GARDEN AND YARD SOCIETY
www.bvgays.com

KINETIC

Real Estate Group

Why work with anyone other than "Family"?
www.kineticreg.com or 414-271-1229

 The Company that Gets You Moving!!! 

**AIDS
WALK
WISCONSIN**



• **REGISTER TODAY!** •

Sunday, October 11, 2009
aidswalkwis.org or 1-800-348-WALK

Visit us in
the Health
& Wellness
area!

PRIDEFEST 2009 FRIDAY HEADLINE SHOW

Miller Lite Main Stage

HOSTED BY POPPY CHAMPLIN

Viewer discretion advised for adult language

Poppy is considered one of the fastest witted comedians in the U.S., and, gradually, internationally. The veteran comic's rapid fire jokes are mixed in with her skewed take on life and topped off with a few short comedic songs. Poppy is not a sadist, but she is most happy when she leaves her audience screaming, crying and doubled over in pain...from laughter.

www.poppycockprod.com

www.myspace.com/poppychamplin



THE JOANS

If you want to see the band next door, go next door. The Joans understand that when people go out to a club to hear a band they want more than music...they want entertainment. The Joans give legendary Hollywood star, Joan Crawford, the rock and roll voice she deserves mixing new wave pop, garage rock, camp, theatrics, and original songs.

www.thejoansband.com

www.myspace.com/thejoansband



DR. DRAW

Dr. Draw inspires kudos wherever he plays, having nurtured a solid reputation for utterly captivating music and energetic performances. His national and international travels have resulted in a constantly evolving musical style that brings together the seemingly disparate elements of classical violin, jazz-rock fusion, folk and pop into a riveting masala that feeds the soul and invigorates audiences.

www.alchemyentertainment.ca

www.myspace.com/doctordraw



SPECIAL GUEST APPEARANCE BY:

TERRA JOLÉ AKA MINI-BRITNEY

Terra Jolé is the official Mini-Britney Spears. The littlest Britney Spears tribute performer in the world! Terra Jolé

Photo by Karl Gian



celebrates pop icon Britney Spears like never seen before with flawless costumes and LIVE vocals.

www.mini-britney.com

myspace.com/minibritneyspears

PLUS:

MISS FOOZIE

Hello Pineapples!

Miss Foozie returns to PrideFest as a genuine purveyor of good cheer. She has hosted events at a number of venues, including charity functions, outdoor festivals, variety shows, bingo nights, and theme nightclub parties. A famed personality and household name in the LGBT community and beyond, she is consistently voted "Best Female Impersonator." Miss Foozie has big plans for expansion and is embarking on a journey to win more hearts across the country.

www.missfoozie.com



WELCOME... CYNDI LAUPER

Cyndi Lauper burst onto the world stage as the quintessential girl who wants to have fun. After more than 20 sterling years and global record sales in excess of 25 million, she has proven that she has the heart and soul to keep her legion of fans compelled by her every creative move. Her newly minted collection, Bring Ya To The Brink, proves she is

one of the most beguiling, innovative and exciting recording artists of this and any other generation.

For Cyndi, part of life's truth is exacting fairness, equality, and an overall good for the people she loves. To that end, she founded the landmark True Colors concert tour, which began its second 24-city journey across America in June 2008. The tour combines great music with a show of solidarity against discrimination and for equality, raising public awareness about the issues facing the LGBT community.

"It is absolutely insane to me that people are not allowed simple civil rights in this country simply because of their sexuality," she says. "It's an honor to always have the genuine affection of the gay community. They have never turned their back on me. I will never turn my back on them. We've had a long and enduring love affair."

The roots of that affair can be traced to 1985, during which Cyndi won a Grammy award for Best New Artist and became the first artist in history to have five top-10 singles from a debut album. Along the way, she continually won accolades as a singer, musician, actor, and writer. She has been nominated for 13 Grammy Awards, 2 Emmy Awards, 2 American Music Awards, 7 American Video Awards, and 18 MTV awards. But her work is not done.

"I still have so much to say and share," she says. "I'm grateful for each and every day that I get to make music. As long as there's a corner of the world where people want to hear me, I'll be there singing my heart out." www.cyndilauper.com



BWMT/Milwaukee

A Local Chapter of the NABWMT:
A Gay Multiracial Organization for All People

www.bwmtmilwaukee.org ☎ 414-461-5359

P.O. Box 80395, Milwaukee, WI 53208

Monthly Events

Meetings on 3rd Saturdays, 7-9 pm
Milwaukee LGBT Community Center

Monthly Dinners, Brunches, Special Events, Cook Outs



PRIDEFEST 2009 SATURDAY STAGE LINEUP

Saturday, June 13 11 a.m. – Midnight

11 a.m. THE BLACK-BERRIES

Miller Lite Main Stage

Founded by Brandon Payton-Carrillo, the Blackberries are a band for the world and are steadily rising as one of Wisconsin's hottest new bands. Since 2005, The Blackberries have been playing and recording in the Milwaukee area and around the Midwest. Check out their album, *So Obvious*, and stay tuned for a new album in the making.

www.theblackberries.com

www.myspace.com/theblackberries



11 a.m. - SHAIA FAHRID EGYPTIAN DANCE

Dance Pavilion

Since 2006, Shaia and her performers have graced PrideFest with a heart-pumping presentation of modern and classical Egyptian dance numbers, colorful costuming, and mesmerizing melodies of the Middle East. See Shaia's web site for complete information on her Milwaukee classes, workshops, troupes, and belly dance events.

www.milwaukeebellydance.com



11:30 a.m.

SO YOU ARE TRANSITIONING AND NEED TO CHANGE YOUR NAME AND GENDER?

Stonewall Stage

Come meet Laura Sette as she walks you through the process of changing your documentation.

11:30 a.m. – 12:15 p.m. - PILATES

Health & Wellness Area

Physical conditioning that uses low-impact exercises and stretches.



Noon

LVNMUZIQ

Miller Lite Main Stage

National touring folk

duo, LVNMUZIQ, is Liz Shavely on acoustic guitar, harmonica, and vocals and Steph DeJong on violin. Together they create music best described as urban folk with an edgy classical twist. LVNMUZIQ currently has three songs featured in an independent film documentary about hate crimes against gays and lesbians.

www.lvnmuziq.com

www.myspace.com/lizsnavelly

Noon – 1 p.m. - MAGIC OF NICK

Children's Stage

Magic and balloon sculpting available before and after show for all ages. Funny man Nick Paul combines family-friendly comedy with amazing magic to bring you an interactive performance you will never forget! Nick Paul's Comedy Magic has been seen in Tokyo, Las Vegas, and Navy Pier Chicago.

www.magicofnick.com

12:30 p.m.

ANN CHRISTOFFER

Dance Pavilion

Ann has tremendous musical range whether singing solo with just her guitar, rockin' hard on her bass, or jamming to the blues. Ann's music is an appealing blend of velvet and steel, with the velvet seen in her tender compositions of the heart and the steel in her hard driving performances.

www.myspace.com/annchristoffer



12:30 p.m.

LESBIAN ALLIANCE 20TH ANNIVERSARY PRIDEFEST MEET-UP

Stonewall Stage

Come nominate a woman of distinction for a Lesbian Alliance Award, meet new friends, see old ones and tell us your stories! (45 minutes)



12:30 – 1:15 p.m. - Shoreline Dance

Health & Wellness Area

Shoreline-Milwaukee is an LGBT country-western dance club. Its mission is to promote country-western dancing in the gay and lesbian community in a fun, positive and inclusive manner.

1 p.m. - TRET FURE

Miller Lite Main Stage

Tret Fure's career spans four decades. Over the course of her career she has engineered and produced countless recordings by a variety of artists, including her own work. Now after four acoustic releases on her own label, Tomboy Girl Records, she has re-established herself in the folk and women's music worlds winning numerous awards.

www.tretfure.com

www.myspace.com/tretfure



1:30 p.m. - MILTOWN KINGS

Dance Pavilion

The Miltown Kings are Milwaukee's premier drag oriented theater troupe, consisting of kings, queenz, femmes and everything in between. The Kings perform both individually as well as in group acts, ranging from sexy to funny to thought-provoking. Audience members are witness to political statements, gender fluidity and challenges to societal norms.

www.miltownkings.com

www.myspace.com/miltownkings



1:30 – 2:30 p.m. - FIGURE HEADS

Children's Stage

The Figureheads is an award-winning musical act turned non-profit organization using original positive hip-hop music to engage youth and educators, from pre-kindergarten through high-school, in order to develop critical thinking and collaborative skills that result in a greater desire to learn and relate. In short, they create resources to inspire youth and transform communities.



www.figureheadsinc.org

1:30 p.m. - THE ALLIANCE SCHOOL

PRIDE GRADUATION CEREMONY

Stonewall Stage

Come join graduates of the Alliance School at The Alliance School Pride Graduation Ceremony!

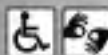
PRIDEFEST —
Sorry we can't be there
with you...

WISCONSIN
CREAM CITY
CHORUS

...but
the show
must go on!



Unitarian Universalist Church West
13001 W. North Avenue • Brookfield, WI
Seating is limited,
so don't delay!



Saturday,
June 13, 2009
5 & 7:30 p.m.

Under the musical direction
of Kristen L. Weber

"DINNER THEATRE LITE"

Tickets are \$20 each.
Available through chorus members
or by calling 414/276-8787.

online at creamcitychorus.org

1:30 p.m. – 2:15 p.m.

TRIGGER POINT MASSAGE

Health & Wellness Area

Technique used by accessing certain points on the body to reduce or eliminate pain or tension.

2 p.m.

KATIE COSTELLO

Miller Lite Main Stage

Katie Costello is an 18-year-old singer/songwriter from Hermosa Beach, California. She's currently finishing her senior year of high school in between touring to support her full length original CD, Kaleidoscope Machine. Her music has been featured on television, including "90210" and "Private Practice," and has gained popularity on the Internet.

www.katiecostellomusic.com

www.myspace.com/katiecostellosongs



2:30 – 4:30 p.m.

BEARAPALOOZA

Dance Pavilion

Six years ago, singer/songwriter Freddy Freeman put together a concert of Bear community musicians and performers calling it Bearapalooza. Freeman says, "Bearapalooza has something to offer everyone whether you are a bear or not, because we celebrate diversity, positive body image, and positive attitudes about gender. Plus the music is top-notch quality work by amazing artists crossing all genre lines."

www.bearapalooza.com

www.myspace.com/bearapalooza



FEATURING:

Freddy Freeman

With his "ear to the ground, listening for a sound," Bearapalooza Founder Freddy Freeman shares what he hears with his audience and fellow musicians. His sound is filled with warmth, honesty, and soul,



but knows no genre. His new CD, Break the Silence, showcases the versatility and talent of a unique singer/songwriter.

www.freddyfreeman.com

Michael West

Strong vocal performances, diverse songwriting ability, and universal appeal easily identify Michael West as a serious talent. His high-octane style uses no formula at all. Instead he offers a blend of abilities, styles and enthusiasms uniquely adapted to himself, on stage. He has been co-producing Bearapalooza events with Freddy since 2004.

www.myspace.com/michaelwestmusic



Ron Morris

Ron Morris has released three albums on the RoadWorm Music Label and featured nationally on the radio and TV waves.

Ron is working on a new folk-rock musical with label-mate, Jess Pillmore, starting production in the fall. Ron has been a regular Bearapalooza performer since 2005.

www.ronmorrismusic.com

www.myspace.com/ronmorris



Andy Northrup

Andy Northrup has written five musicals, performed in film and stage productions and toured across North America both as an actor and a singer/songwriter. His first album, Slow Burn Avenue, was described as a "sterling debut" and his second album, Cardboard Logic, was voted album of the year by one source. Andy has been a regular Bearapalooza performer since 2003.

www.andynorthrup.com

www.myspace.com/andynorthrup



Tommy Johns

Tommy Johns has been singing and playing guitar since he was eight years old. He has recorded and released

two records, and appeared on several others. Influenced by growing up in the 70s and 80s, his songs blend progressive rock with pop sensibilities, and hooky guitar riffs layered counter-melodies & harmonies. Tommy has been a regular Bearapalooza performer since 2004.

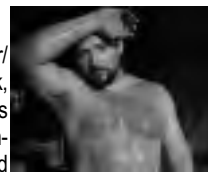
www.myspace.com/tommyjohns2



Kendall

Kendall is a singer/songwriter/artist from Buffalo, New York, touring internationally with his unique and colorful performances, and has even appeared in many international magazines. This year he is releasing his long awaited CD, Truth Changes. Kendall has been a regular Bearapalooza performer since 2004.

www.kendallshead.com



2:30 p.m.

THAT HITS THE SPOT! G-SPOT AND P-SPOT ANATOMY & PLAY

Stonewall Stage

Have you heard of the G-spot or the P-spot (prostate)? Sexuality educator Laura Anne Stuart will facilitate an informative workshop on these erogenous zones, techniques to stimulate them, and how they can be part of safe and healthy sexual play. Discussion includes the similarities of sexual anatomy across different genders and a variety of different toys and tools.

2:30 – 3:15 p.m. - NIA

Health & Wellness Area

Information and activities for those seeking healthier lifestyle choices.

3 – 5:30 p.m.

COME OUT AND PLAY

Youth Stage

Shhh...This year's youth events are a surprise, so you'll have to check out the stage to see what's happening. It may be a fashion show; it may be role-playing. Who knows? Come and find out!

The Queer Program...it's so Gay

Live Call-In TV ~ Mondays 6:30 - 7:30 p.m.

Replay's Friday midnight & Saturday, 10 p.m.

Time Warner Cable Channel 96

Co-hosted by Michael Lisowski & 'Infamous D.

*Expanding the visibility of Wisconsin's
Queer communities since 1992*

P.O. Box 090441
Milwaukee, WI 53209
414-265-8500
queerprgm@aol.com



3:15 p.m. - PULSATION BAND

Miller Lite Main Stage

Pulsation is one of the hottest all-female bands in the Midwest. Founded almost two decades ago, this high-energy group has racked up an impressive performance resume and a fiercely devoted fan-base. From upbeat disco/funk music from the 70's to the energetic beats of today's hip/hop, pop and alternative, the dynamic women of Pulsation deliver a memorable experience you won't soon forget.



www.pulsationband.com

3:30 p.m. - WHO WANTS TO BE A QUEER!

Stonewall Stage (90 minutes)

What challenges have LGBT-identified individuals faced throughout history? How have these challenges shaped queer culture today? Through an interactive game similar to "Who Wants to be a Millionaire," we will explore queer history, laws that protect LGBT individuals, modern queer culture and media. Participation is anticipated.

4 - 5 p.m. - COMEDY SPORTZ SHOW

Children's Stage

Three-player show for kids of all ages. Audience participation will be used throughout the show.

www.comedysportzmilwaukee.com

3:30 - 4:15 p.m. - REIKI

Health & Wellness Area

Healing method that involves gentle massage therapy and deep relaxation.

4:30 p.m. - NAMOLI BRENNET

Miller Lite Main Stage

Namoli Brennet was born male and transitioned to female, and her voice proves to be the sound of the transgender experience, knowing what it feels like to be unstable, on the edge, a little hard to define. Brennet has an innate understanding of the language of music, and she skillfully uses it to communicate insights that are both poetic and powerful.



www.namolibrennet.com

www.myspace.com/namolibrennet

4:30 - 5:15 p.m. - BELLY DANCING

Health & Wellness Area

Dance emphasizing movement of the pelvis and abdominal muscles.

**5 p.m. - WINDY CITY BEAUTIES
Dance Pavilion**

Here they are again in full force! The Windy City Beauties are a bunch of phenoms from Chi-town and represent a wide variety of performing styles. Teri Yaki, Sal E, Truly Fabulous, Dita Ritz, and Tina Torch are all very happy to be asked back for such a wonderful event and hope everyone has a great time!



www.myspace.com/chicagoteriyaki

KRUZ

BREW CITY SISTERS
"MEET AND GREET & BAR BLESSING"
JUNE 12, 2009
1:00 AM TO CLOSE
354 E National Ave (414) 272-KRUZ
OPEN DAILY 3:00 PM - CLOSE

5 p.m. - Outwords Books, Gifts & Coffee presents

NOVELIST ANDREW GREY

Children's Stage

Grey, a former Milwaukeean, and one of the emerging names in the genre of Gay Fiction and Romance, will read and sign copies of his latest novel, "Thursday's Child," the second in his "Children of Bacchus" series. Come enter the world of Gay Romance with Andrew Grey as he reads from and signs copies of Thursday's Child. www.outwordsbooks.com



**5 p.m. - PROJECT Q YOUTH LEADERS TROOP FOR YOUTH!
Stonewall Stage**

A safer sex skit for people between the ages of 14 and 24! Come see your peers make you laugh until you bust your gut, while learning about how to stay safe!

5:30 p.m. - SUMMER MENCHER

Miller Lite Main Stage

Mixing piano, guitar, strings and thick harmonies into her material, Summer's genre-crossing sound includes middle-eastern tones, unique harmonic twists and turns, and an occasional rock edge and hip-hop/spoken word. Summer released her first CD, Bench People, in 2003 at 18 and released the Stranger to Stronger EP in 2009. Break the Mold is scheduled for release later this year.



www.summermencher.com

www.myspace.com/summermencher

THEIRONHORSEHOTEL.COM
1.888.543.IRON (4766)

500 WEST FLORIDA STREET
MILWAUKEE, WI 53204

DESIRE'S
HOTELS

BUSINESS UNUSUAL



THE IRON HORSE
HOTEL™

OFFICIAL SPONSOR OF PRIDEFEST

BOOM

Proud Sponsor of the Milwaukee Pride Parade
Come watch the Pride Parade on Sunday in front of our bars.
Beer Bust during the Parade.



Show Tunes with Lee after the Parade in The Room

Daily Specials:

- Mon.** 2-4-1 Taps of Beer.
- Tues.** \$2 Rail Drinks All Night.
- Wed.** Balls to the Walls!
- Thurs.** 2-4-1 Pinnacle Flavored Vodka Cocktails.
- Fri.** Beer Bust 5-9pm Tony on the Piano every other Friday in The ROOM.
- Sat.** Beer Bust 2-6pm with Shawn.
- Sun.** Beer Bust 2-6pm with Lance.



Open Mon.- Fri. 5pm with 2-4-1 cocktails 5-8pm
Sat. & Sun. Open at 2pm

Come Play with Us Where Buddies meet Buddies.

2 Great Bars 1 Location

Pool Tables - Darts - Games - Pizza - Patio

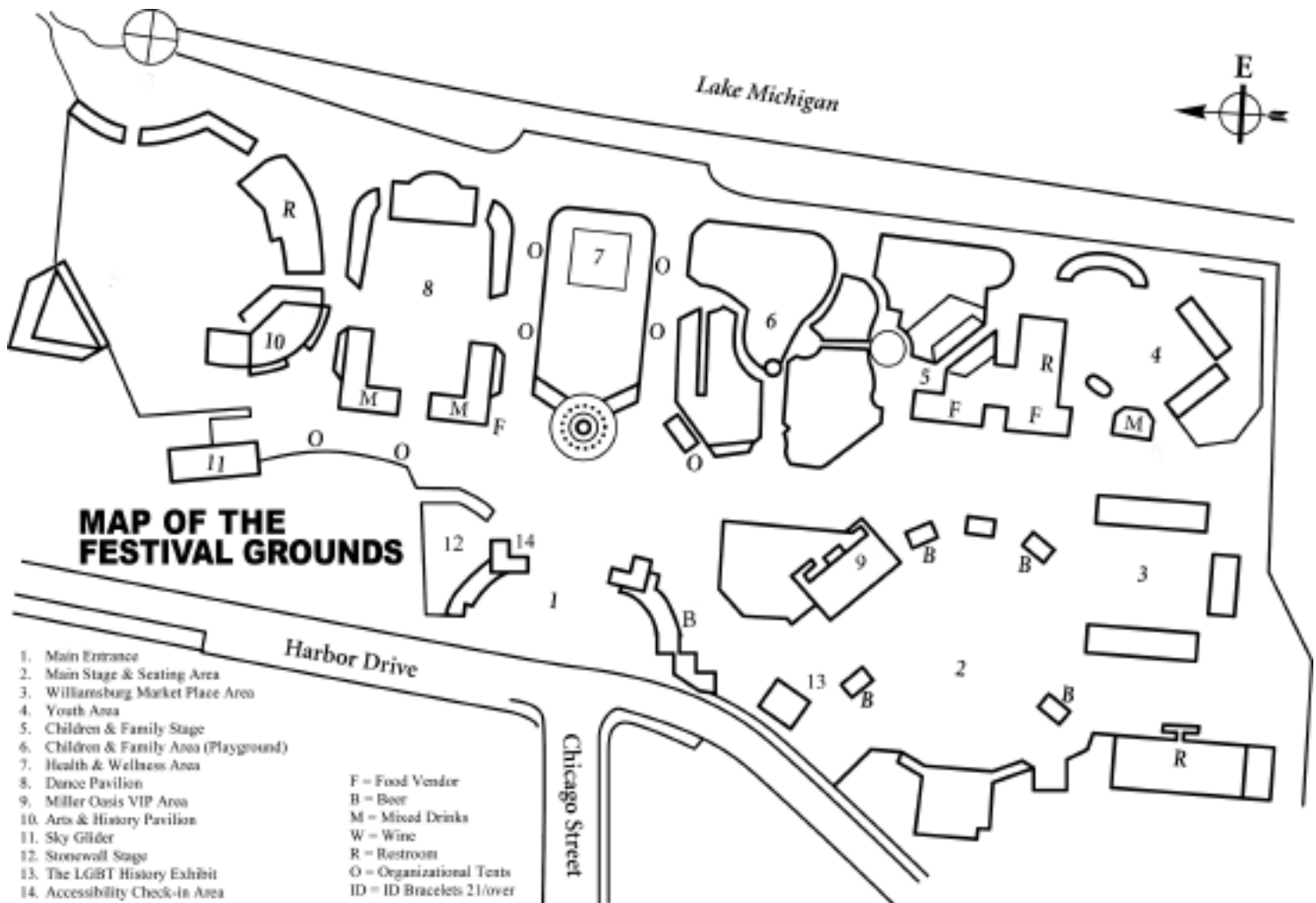
625 S. 2nd St. Milwaukee (414) 277-5040



CENTER PULL OUT SECTION - FRIDAY STAGE SCHEDULE

Friday June 12, 2009 4:00 p.m. - Midnight

TIME	Miller Lite Main Stage	Dance Pavilion	Stonewall Stage
4:00-4:30	Flyby Stereo		
4:30-5:00		Mr. And Miss. PrideFest Pageant	
5:00-5:30	Corday		
5:30-6:00			
6:00-6:30	PrideFest Opening Ceremony	Grand Divas of Wisconsin	Interfaith Prayer Service
6:30-7:00	Major Tom		
7:00-7:30		PUMPI DJ Showcase	
7:30-8:00		with DJ Brett Locascio	
8:00-8:30	HEADLINE SHOW	VJ Brye	
8:30-9:00	Hosted by Poppy Champlin	Jason Antone	
9:00-9:30	The Joans, Dr. Draw	DJ Ron G	
9:30-10:00	Mini-Britney	DJ Kelly	
10:00-10:30	Miss Foozie	Special effects by The Fire Sirens	
10:30-11:00	CYNDI LAUPER	DJ Kelly	
11:00-11:30			
11:30-12:00			



CENTER PULL OUT SECTION

TIME	Miller Lite Main Stage	Dance Pavilion	Stonewall Stage
11:00-11:30	The Blackberries	Shaia Fahnd Egyptian Dance	Transitioning and need to change your name and gender?
11:30-12:00			
12:00-12:30	LVNMUZIQ		
12:30-1:00		Ann Christopher	Lesbian Alliance 20th Anniversary Me
1:00-1:30	Tret Fure		
1:30-2:00		Miltown Kings	The Alliance School Pride Graduation Ceremony
2:00-2:30	Katie Costello		
2:30-3:00		Bearapalooza featuring:	That hits the spot! G-Spot and P-Spot Anatomy & Play
3:00-3:30	(3:15) Pulsation Band	Freddy Freeman, Michael West	(3:15) Who Wants to Be a Queer?
3:30-4:00		Ron Morris, Andy Northrup	
4:00-4:30		Tommy Johns, Kendall	
4:30-5:00	Namoli Brennet		
5:00-5:30		Windy City Beauties	Project Q Youth Leaders Troop for Yo
5:30-6:00	Summer Mencher		
6:00-6:30		(6:15) 9th Annual Leather & Fetish Show	
6:30-7:00	Josh Duffy		
7:00-7:30		Pump! DJ Showcase with:	
7:30-8:00	Toby	DJ John Murges	
8:00-8:30		Houston Bernard	
8:30-9:00		DJ Joe Gauthreaux	
9:00-9:30	HEADLINE SHOW	Cyon Flare	
9:30-10:00	hosted by Frida Lay	VJ Brye	
10:00-10:30	special guest Jade		
10:30-11:00	Bridget Lyons		
11:00-11:30	BRANDY		
11:30-12:00	fireworks		

SATURDAY, JUNE 10

TIME	Miller Lite Main Stage	Dance Pavilion	Stonewall Stage
11:00-11:30	(11:15) The Fundamentalists	(11:15) Women's Voices Milwaukee	Talking to Kids about Sex: A Discussion for Parents
11:30-12:00			
12:00-12:30		Shaia Fahnd Egyptian Dance	Come See what Your Milwaukee LGB Center Can Do for You!
12:30-1:00	Martine Locke		
1:00-1:30			Lesbian Alliance Singles Gathering
1:30-2:00	(1:45) Emily White	Ian Wilson	
2:00-2:30			Singing in Sacred Circle
2:30-3:00		(2:45) Joel Evan	
3:00-3:30	The Barrettes		
3:30-4:00			
4:00-4:30	(4:15) Ferron	B.A.R.S. Live Karaoke	Now & Then: An Intergenerational Discussion
4:30-5:00			
5:00-5:30			
5:30-6:00	Pauline Pisano	Latino Drag Show	Celebration of Our Relationships (from the Mass Commitment Ceremony)
6:00-6:30			
6:30-7:00		(6:45) Milwaukee Pride Parade Awards	
7:00-7:30	HEADLINE SHOW	Pump! DJ Showcase	
7:30-8:00	hosted by Karen Williams	Dj's PsychoBitch & Teri Bristol	
8:00-8:30	The Heat Birds		
8:30-9:00	special guest Deborah Cox		
9:00-9:30	ETTA JAMES		
9:30-10:00	and the Roots Band		
10:00-10:30		SEPTEMBER	
10:30-11:00		Pump! DJ Showcase with:	
11:00-11:30		DJ Jerry Griffith, Firesirens,	
11:30-12:00		Cyon Flare, VJ Brye	

SUNDAY, JUNE 11

SATURDAY & SUNDAY STAGE SCHEDULE

Health & Wellness Stage	Children & Family All Day activities 11:00am-6:00pm	Youth Stage
Pilates	Magic of Nick	
Shoreline Dance		
Trigger Point Massage	Figure Heads	
NIA		
Reiki	Comedy Sportz Show	Come Out and Play
Belly Dancing	Novelist Andrew Grey	
	The Vagina Monologues <i>Mature Content</i>	Walk it Out

JUNE 13, 2009 11AM-MIDNIGHT

Health & Wellness Stage	Children & Family 11:00 a.m. - 6:00p.m all day activities	Youth Stage
Pilates	Wayne the Wizard	
Latinos En Accion	Fire and Ice: A show of Extremes (2:45) Fun With Chemistry	
NIA		
Breast Health LGBT Center		Come out and Play
Belly Dancing	Cookie Cutters	
		See 'N B Scene

JUNE 14, 2009 11AM-MIDNIGHT

A black and white photograph of two young men in profile, facing each other. They have white face paint on their cheeks, including a swirl on the left man's cheek and a vertical line on the right man's cheek. The background is dark with a pattern of light-colored circles.

SAVE THE DATES!

MILWAUKEE

LGBT FILM/VIDEO

FESTIVAL

A black and white photograph of two women looking out of a window. The woman in the foreground is looking slightly to the left with a serious expression. The woman behind her is looking forward. The window frame is visible on the left.

OCTOBER 15-25, 2009

Visit our website for updates:
arts.uwm.edu/lgbtfilm



Now on FaceBook!

Where will you be
when night falls?

Ravens

Open Tue. - Sat. at 8pm

DJ's Fri. and Sat.
w/\$10 all you can drink

Karaoke Thursday's
Nightly drink specials

Enjoy a
Drag Show
last Friday of
every month

www.ravensnightclub.com ~ check us out on FACEBOOK!

RAVENS 215 E College Ave, Downtown Appleton 920-364-9599



SUNDAY, JUNE 14 - 2 PM

www.prideparademke.org

Take our Shuttle Bus to & from Pridefest
Sunday 6-14-09 before & after the parade

Starts running 1 pm ends at 6 pm

All stops are located on First St. at these intersections:
1st & Oregon St., 1st & National, 1st & Washington
also Summerfest Grounds



Join us 6:45pm for the Awards Ceremony
at the PrideFest Dance Pavilion



Also Sponsored by
KRUZ
and

ThreeOlives

Avant-Garde

BOOM

BOUND

QUEST

Exercising **Pride**

PrideFest **Health & Wellness**

**Good Information,
Fun Activities,
and Free Stuff.**

- >> The first 500 to visit booths in the **Health & Wellness Area** will receive a special prize and a chance to win a Trek bike.
- >> Hourly giveaways of iPod Shuffles and Outpost Foods gift cards at the **Health & Wellness Stage**.



***Experience PrideFest's
Health and Wellness Area!
Open Saturday and Sunday, 11am to 5pm***

SPONSORS:





Exercising **Pride**

PrideFest Health & Wellness

Thank you
**to this year's agencies
 for participating
 in Pridefest's Health
 and Wellness Area!**

- * ARCW
- * Badger Care Core
- * BESTD
- * Cream City Foundation
- * Cream City Squares
- * Diverse & Resilient
 - Connexus
 - Health Promoters
 - rm2breathe
- * SHEBA (Sisters Helping Each other Battle AIDS)
- Youth Advisory Board
- * FORGE - LGBT Crime Victims Project
- * Foster Care Youth Independence Center of WI

- * Galano Club of Milwaukee
- * Health Institute of Milwaukee (H.I.M.)
- * Images of Us Sports
- * La Casa de Esperanza
- * Lesbian Alliance
- * Love of God Cathedral
- * Milwaukee Gay Arts Center
- * Milwaukee GAMMA
- * Milwaukee LGBT Community Center
 - Anti-Violence Project
 - Adult Programming
 - Membership
 - Milwaukee Breast and Cervical Cancer Awareness Program

- * Milwaukee Metropolitan Community Church (MCC)
- * Milwaukee Reiki Association
- * The Queer Program
- * SAGE Milwaukee
- * Seniors in Charge Website Project
- * Shoreline Milwaukee
- * Sixteenth Street Community Health Center
- * PFLAG Milwaukee
- * UMOS
- * Vets Do Ask Do Tell
- * Wisconsin Anti-Violence Effort (WAVE)
- * Women's Voices Milwaukee

SPONSORS:



**6 p.m. - The Milwaukee Gay Arts Center presents
THE VAGINA MONOLOGUES**

Children's Stage

Mature audiences Only
MGAC is proud to present Eve Ensler's Obie Award-winning play, which provides a poignant and hilarious tour of the ultimate forbidden zone. The Vagina Monologues is a celebration of female sexuality in all its complexity and mystery, featuring an entirely local cast. Directed by Alan Piotrowicz and Cheryl Ann Lisowski. Produced by special arrangement with Dramatists Play Service, Inc.



6 - 8 p.m. - WALK IT OUT

Youth Stage

Shhh...This year's youth events are a surprise, so you'll have to check out the stage to see what's happening. It may be a fashion show; it may be role-playing. Who knows? Come and find out!

6:30 p.m. - JOSH DUFFY

Miller Lite Main Stage

Josh Duffy is a singer/ songwriter/musician living in New Orleans, Louisiana. Within a year of Josh's debut release of Artificial, four singles charted and his next release, I Will Love You, will be packaged with his first ever music video. Josh has been considered an artist to watch in the coming year.
www.joshduffy.com
www.myspace.com/joshduffyonline



6:15 p.m. - 9TH ANNUAL LEATHER & FETISH SHOW

Dance Pavilion

The hot men and women of the leather, latex and uniform world will present the 9th Annual Fetish Gear Show. Leather Pride at Pridefest! This high-energy show is a festival favorite. Many new features have been added to the show, so check it out if you so desire.



7 - 7:45 p.m. - PUMP! DJ SHOWCASE

DJ JOHN MURGES

Dance Pavilion

A native of Chicago, John Murges began his career as a DJ after moving to Milwaukee in the mid-90s. Now, John is one of Milwaukee's best-known and most popular DJs. John has played and held residencies at some of Milwaukee's largest and well-known clubs and has played for special events nationwide.
<http://www.myspace.com/djohnmurges>
<http://www.myspace.com/pumpmilwaukee>



7:30 p.m. - TOBY

Miller Lite Main Stage

Energetic. Raw. Feisty. Australian, TOBY, is a charismatic singer, songwriter and guitarist magically weaving together roots, rock and reggae. Passionate and joyous on stage, TOBY is constantly touring the world and now she returns to America to launch her brand new DVD, Live at The Fly, which includes live footage, and bonus backstage and touring videos.
www.tobymusic.com.au
www.myspace.com/tobybeard



7:45 p.m.

HOUSTON BERNARD

Dance Pavilion

Houston Bernard was born in Oklahoma and grew up in Alaska, Massachusetts and Brooklyn, New York City. He has been on a world tour promoting gay rights and free speech since April of 2003, and his recent release, "I Feel Gorgeous," has made a huge splash. He sincerely appreciates his fans' and friends' support and looks forward to meeting friendly faces in every city.
www.houstonbernard.com
www.myspace.com/houstonbernard



8 p.m. - Midnight - PUMP! DJ SHOWCASE

DJ JOE GAUTHREAUX

Dance Pavilion

For Joe Gauthreaux, DJing is a journey. Every time he steps into the DJ booth, Gauthreaux forges a path through a diverse musical landscape, guiding throngs of party-goers through peaks and valleys of soulful funk, progressive rhythms, tribal drums, disco house, and melodic, driving trance. Gauthreaux has made the trip countless times, though he never takes the same road twice.
www.djjoeg.com



PLUS SPECIAL EFFECTS BY:

8 - 11:45 p.m. CYON FLARE

Dance Pavilion

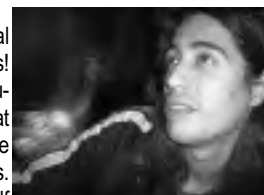
Robert Mitchell evolved into Cyon Flare through his love of costumes, chacha shoes, Las Vegas showgirls and Liberace's creative use of glitter and feathers. Cyon Flare hopes to bring more light into every community that hears his songs and experiences his performances. His goal as an artist/entertainer is to use his gifts to reach all people, straight, gay, young and old.
www.cyonflare.org



7 - 11:45 p.m. - VJ BRYE

Dance Pavilion

Big screens! Mental motion video madness! VJ Brye brings the visual component of a great night out every time he fires up his projectors. Surrounding himself with computers, controllers, effects processors, DVDs and cameras, the only missing ingredients to his visual gumbo are bangin' beats and a good vibe.
www.MySpace.com/vjBrye





**Providing opportunities
that nourish
women who love women
since 1989**

315 West Court Street, Milwaukee, WI 53212 • www.lesbianalliance.org • 414.272.9442



PRIDEFEST 2009 SATURDAY HEADLINE SHOW

9 p.m. HEADLINE SHOW
Miller Lite Main Stage

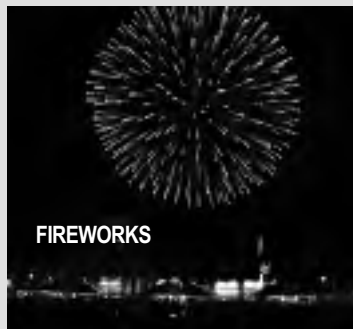
HOSTED BY FRIDA LAY

Viewer discretion advised for adult language

Frida Lay is thrilled to return to PrideFest for the third year in a row. She is one of Chicago's most unique and talented entertainers and has been front and center in the Chicago gay scene for more than a decade. Frida can be seen hosting the longest running drag shows in Chicago including "Roscoe's Drag Race," "Wet Boxer Contest," and "It's Just Bingo Bitch" at Charlie's. www.myspace.com/fridalay



inspired by real life, and beg grace from honesty. www.bridgetlyonsmusic.com
www.myspace.com/bridget



FIREWORKS



WELCOME ... BRANDY

Multi-platinum, Grammy-winning, superstar Brandy released her fifth full-length studio album *Human* online and in-stores Tuesday, December 9, 2008. *Human* is a bold and breathtaking collection of songs that represents Brandy's growth as an artist and a Human being.

The first single "Right Here (Departed)" was No. 1 for six consecutive weeks on BET's "106 & Park," and Brandy says the song is very personal. "In the last couple of years, there's been different circumstances in my life and I felt like what I needed was extra support, extra encouragement, extra love. That song was written for

that purpose in my life," she says. "And it was very inspirational and as soon as I heard it, I knew that was a song that I was supposed to sing."

Human also represents Brandy's return to what she's been doing professionally since she was 15 years old, when she released her four-time platinum debut, *Brandy*, in 1994. "I love music, and music is what I live for," she says. "It's the best way I can convey my feelings, my purpose, and it's what I love to do and I will continue to always put out music and I won't take as long anymore."

Brandy Norwood was born in McComb, Mississippi and moved with her family to Carson, California at the age of 4. While she has sold more than 25 million albums worldwide and is one of the top selling female recording artists in history, Brandy is also a woman and a single mother. Many of the songs on *Human* offer a glimpse into her personal growth, understanding of life and need to sing about the Human condition.

"I want to convey that I'm just like you. I'm just like anybody else," she says referring to her fans. "I go through the same things. I react in some of the same ways, and at the end of the day, I'm a Human being just like the next person."

www.foreverbrandy.com



SPECIAL GUEST APPEARANCE: JADE FROM RUPAUL'S DRAG RACE



Reality TV star, Jade, is from the mega-hit series *RuPaul's Drag Race*. Jade began performing in 2003 in Chicago and Michigan, and was the first female impersonator to be crowned as Miss Puerto Rico in the Paseo Boriqua pageant system. As a professional dancer, she's got it all: beauty, talent, abs of steel and a great attitude. www.myspace.com/jadechicago

BRIDGET LYONS

Bridget Lyons grew up playing the guitar in Chicago. Mentored by a slide blues guitarist, she was



exposed to an incredible world of art and music at an early age and inspired by many Chicago blues legends. Her songs are created from true stories,

Serving the Community Since 1985

HUME LAW OFFICES

- Estate Planning • Family Matters
- Discounts and alternative payment plans available

Kathleen E. Hume, Esq.

262.789.6845 • HumeLaw@yahoo.com

350 Bishops Way, Suite 204 • Brookfield, WI 53005



PRIDEFEST 2009 SUNDAY STAGE LINEUP

Sunday, June 14 11 a.m. – Midnight

11 a.m.

TALKING TO KIDS ABOUT SEX: A DISCUSSION FOR PARENTS

Stonewall Stage

Many adults believe sexuality in children begins at adolescence. Actually, we're sexual creatures from birth. How should parents address sex and bodily pleasure with their children? How do you convey healthy messages about sexuality while also setting appropriate boundaries? Come to this interactive workshop led by sexuality educator Laura Anne Stuart to gain new perspectives on this issue.

11:15 a.m. - (THE) FUNDAMENTALISTS

Miller Lite Main Stage



The Detroit group has its feet firmly planted in both the electronic and raw rock heritage of their home city, infused with an unapologetic queer intensity. (the) fundamentalists are Chris Taylor, Angie "Wings" Miller and Shawn Scott. (the) fundamentalists are a musical revelation that stays with the listener long after the last note has been played.

www.myspace.com/thefundamentalists

11:15 a.m. - WOMEN'S VOICES MILWAUKEE

Dance Pavilion

With the support of the founding artistic director, Melissa Beastron, the determination of Janice Lange, and the experience of Diane Gregory, a



small group of women met in January 2006 to create Women's Voices Milwaukee. WVM is thrilled to be back at PrideFest this year. Please e-mail WVM for more information and details on upcoming performances.

womensvoicesmilwaukee@gmail.com

11:30 a.m. – 12:15 p.m. - PILATES

Health & Wellness Area

Physical conditioning that uses low-impact exercises and stretches.

Noon - SHAIYA FAHRID EGYPTIAN DANCE

Dance Pavilion

Since 2006, Shaia and her performers have graced PrideFest with a heart-pumping presentation of



modern and classical Egyptian dance numbers, colorful costuming, and mesmerizing melodies of the Middle East. See Shaia's web site for complete information on her Milwaukee classes, workshops, troupes, and belly dance events.

www.milwaukeebellydance.com

Noon

COME SEE WHAT YOUR MILWAUKEE LGBT CENTER CAN DO FOR YOU!

Stonewall Stage

In the last year, the Milwaukee LGBT Community Center has been busy bringing the community a line of adult-centered programming. Patrick Price will give an introduction to what is new at the center. The Spiritual Team members will talk about the Spiritual Wellness program, and participants will weave the Web of Life.

www.mkelgbt.org



Milwaukee LGBT Community Center

Noon – 1p.m.

WAYNE THE WIZARD

Children's Stage

Wayne the Wizard's show consists of amazing magic, comedy ventriloquism and audience participation. His show includes colorful magic and funny routines! Wayne the Wizard will also perform strolling magic and balloon sculpturing after stage show. Magician for children ages 10 and under.



A Proud Sponsor of the 2009 Pride Parade



Maintaining the G/L Community Endowment
and providing assistance for a variety of
programs and organizations with the
"Your Choice Program"
for the GLBT Community

Become a supporting member.

G/L COMMUNITY TRUST FUND
P.O. Box 1686 Milwaukee, WI 53201
414-643-1652

www.glcommunitytrustfund.com

A 501 C-3 Tax-exempt Charity

GRUBER

LAW OFFICES, LLC

**One
Call...
That's
All!**



**As Seen
On TV**

Chicago
Best Midwestern
Winner
Best Lawyer 2000
Forbes.com

ATTORNEY DAVID E. GRUBER

CAR ACCIDENTS SERIOUS INJURIES

**NO FEES UNLESS SUCCESSFUL
HOME & HOSPITAL VISITS AVAILABLE**

414-276-6666

WINDY CITY MEDIA GROUP

HAPPY PRIDEFEST!

WINDY CITY TIMES



**Windy City
QueerCast**
Queer and now!

www.WindyCityMediaGroup.com

For the Past 10 Years We've Helped Build and Nurture Families



• Family building resources including assisted reproduction, adoption and foster care

• Parents tell their stories

• LGBT friendly camps

• LGBT friendly private schools

• LGBT family events

• News & reviews

Gay Parent

LGBT MAGAZINE



SUBSCRIBE or SEND A GIFT SUBSCRIPTION

\$22 / one year (6 issues) or \$37 / two years

order online at gayparentmag.com

phone **718-380-1780** • email gayparentmag@gmail.com

Contact Angeline Acain for advertising rate information.

Avant-Garde®

Changing the face of the earth, one needle at a time



7219 W. Greenfield Ave
West Allis, WI
(414) 607-4068

**All Piercings Just
\$15-\$35!!**

Over 1000 Different styles of Body Jewelry!



Highly experienced in all types of Body Piercing.

Now Celebrating our 10th Anniversary!

**Over 50yrs of
Piercing Experience**



www.avant-garde-piercing.com

CHICAGO FREEPRESS

Before you visit Chicago this summer
visit chicagofreepress.com first!



Celebrating 10 years
Chicago's 31 media companies serving the LGBT community



LGBT (& XYZ, too!)

Our Lives Magazine



gnu

quest news update

Updated news links from around the world

www.quest-online.com

C3 Designs

www.c3-dzsigns.com

The Official Jeweler Of Pridefest

8628 1/2 S. Marketplace, Oak Creek WI 53154 (414)764-3892



P r i d e F e s t®

CLOSING PARTY
WITH DJ PLEZ (CHICAGO)

SUNDAY, JUNE 14TH
DRINK SPECIALS ALL NIGHT!
BOTTLE SERVICE & VIP SEATING AVAILABLE
10 P.M. • NO COVER

1905 E NORTH AVENUE, MILWAUKEE
(414) 272-3337 • DECIBELMKE.COM
21+ • ID REQUIRED



12:30 p.m. - MARTINE LOCKE

Miller Lite Main Stage

Martine Locke rocks the stage armed with only an acoustic guitar and a powerhouse vocal. Combine that with a dose of Australian humor and passionate lyrics that hold insight into life, and be ready for a spontaneous musical adventure. Joining Martine on stage to round out this Aussie's energetic performance will be drummer/singer Dionne Ward.
www.martinelocke.com
www.myspace.com/martinelocke



**1 p.m. - LESBIAN ALLIANCE SINGLES GATHERING
Stonewall Stage**

Are you a single woman who is interested in meeting other single women? Come join us for an informal meet-up and discussion.

**1:30 p.m. - IAN WILSON
Dance Pavilion**

Ian Wilson is a keyboardist and singer/songwriter based in Chicago. Originally trained in musical theater and classical piano, Ian eventually fell prey to girl rock, Virginia Woolf novels, and trashy gay romance films. His solo performances are a mix of piano rock and renegade show-tune. He performs regularly around the Midwest and is currently working on a full-length solo album.
www.ianwilsonmusic.com
www.myspace.com/ianwilsonmusic



**1:30 - 2:15 p.m.
FIRE AND ICE: A SHOW OF EXTREMES
Children's Stage**

A presentation by Discovery World for children of all ages.
www.discoveryworld.org

**1:30 - 2:15 p.m.
JAMES BOUDREAUX: LATINOS EN ACCION &
CORE EL CENTRO
Health & Wellness Area**

Information and activities for those seeking healthier lifestyle choices.

1:45 p.m. - EMILY WHITE

Miller Lite Main Stage

Emily White's sophomore release, 12 Ways to Live, delves into new territory for the Chicago singer/songwriter. She's still playing her signature guitar lines and singing the disarmingly honest lyrics that have made her popular with fans throughout the country, but the new album takes a decidedly more indie approach to the folk-rock style that has garnered attention in songwriting circles.
www.emily-white.com
www.myspace.com/emilywhite



**2 p.m. - SINGING IN SACRED CIRCLE
Stonewall Stage**

Singing in Sacred Circle is an opportunity to experience this woman-centered practice that uses music as a method for healing. Based on the life work of Kay Gardner (1942 - 2002), this experience is open to people of any gender identification. (Milwaukee Women Singing in Sacred Circle)

**2:30 - 3:15 p.m. - NIA
Health & Wellness Area**

Information and activities for those seeking healthier lifestyle choices.

**2:45 p.m. - JOEL EVAN
Dance Pavilion**

Joel Evan's 2007 debut album, Enjoy the Sadness, explored Evan's inner thoughts on the science of using one's sadness as a pleasurable experience. Joel Evan released "I'll Keep Smiling" in January 2009 as a CD single and a music video. His album, Embracing, was released in March of 2009.
www.joelevanmusic.com
www.myspace.com/joelevanmusic



**2:45 - 3:30 p.m.
FUN WITH CHEMISTRY
Children's Stage**

A presentation by Discovery World for children of all ages.
www.discoveryworld.org

3 p.m. - THE BARRETTES

Miller Lite Main Stage

Milwaukee's own female rock band dabbles in punk, pop, rock, blues and chaos involving catchy riffs and gritty vocals! The Barrettes replace a bass guitar with a cello and combine it with a French horn, ukulele, mandolin, melodica, guitars and drums for a wild and chaotic ride that can be dreamy and melodic at times as well.
www.myspace.com/themilwaukeebarrettes



**3 - 5:30 p.m. - COME OUT AND PLAY
Youth Stage**

Shhh...This year's youth events are a surprise, so you'll have to check out the stage to see what's happening. It may be a fashion show; it may be role-playing. Who knows? Come and find out!

**3:30 - 4:15 p.m. - BREAST HEALTH LGBT CENTER
Health & Wellness Area**

Information and activities for those seeking healthier lifestyle choices.

**4 p.m. - B.A.R.S. LIVE KARAOKE (BE A ROCK STAR)
Dance Pavilion**

We're looking for a few good men and women who want to be ROCK STARS for the night. We have hundreds of songs to choose from, and if we don't have your song on our list, submit it to us and we'll get it ready for you. Pick your song, get up on stage, greet the crowd, and do your thing!
www.myspace.com/barslivebandkaraoke



**4 p.m.
NOW & THEN: AN INTERGENERATIONAL DIALOG
Stonewall Stage**

Come join people of all ages in discussion about our experiences as LGBT folks. Panel presentation is followed by Q&A/audience discussion. (SAGE Milwaukee)

**4 - 5 p.m. - COOKIE CUTTERS
Children's Stage**

Kara Kesselring and Laurie Empen, perform music from their debut CD, Callin' All Kids. Expect interactive songs, great



LEARN TO RECOGNIZE ABUSE

(JEALOUSY, PUT DOWNS, FEELING AFRAID TO LEAVE YOUR RELATIONSHIP)

When there is no one else to turn to,
Think about getting help.

The Anti-Violence Project
Serving Lesbians, Gay, Bisexual and Transgender individuals who experience
Domestic Violence, Sexual Violence, Harassment and Bias

315 W. COURT STREET
MILWAUKEE, WI 53212
(414)271-2856

A PROGRAM OF THE MILWAUKEE LGBT COMMUNITY CENTER



vocal harmonies, traditional songs, folk tunes and originals. Together with guitarist Neal Alger they perform jazzy arrangements that both children and adults will enjoy.

www.thecookiecutters.net

4:15 p.m. - FERRON
Miller Lite Main Stage

Part Cree and Ojibwa Indian, Ferron grew up in the Vancouver area in British Columbia, Canada. The eldest of seven children, she was tossed between foster homes, her mother and an abusive stepfather. At 15, she ran away and never looked back. Ferron would go on to become one of Canada's most famous folk singers.

www.ferrononline.com

www.myspace.com/ferronmusic



4:30 - 5:15 p.m. - BELLY DANCING

Health & Wellness Area

Dance emphasizing movement of the pelvis and abdominal muscles.

5:30 p.m. - PAULINE PISANO

Miller Lite Main Stage

Award-winning Brooklyn-based singer/songwriter, Pauline Pisano, began studying piano and voice at a very early age, writing her first song at 14. Over the past 10 years she has worked as a vocalist, pianist, and composer. She has played all over the country, and is currently touring as both a solo artist and with a band.

www.paulinepisano.com

www.myspace.com/paulinepisano



5:30 p.m.

LATINO DRAG SHOW
Dance Pavilion

La Rosa Productions presents the Latino Drag Show, starring: Violeta Minelly, Mia Dumar, Betty Boop, Tania Casanova, Esmeralda Disandi, Whitney Gaytan, Jessy Chavez, Barbie Sodi, Shadairmond, Kasandra Munoz, Francesca Tanon, Ruby Gaytan, and many more!



5:30 p.m. - CELEBRATION OF OUR RELATIONSHIPS
(formerly the Mass Commitment Ceremony)
Stonewall Stage

Recognizing your relationship at the festival's beautiful lakefront location can help make your experience even more memorable. Clergy will lead a beautiful service of celebration, and couples will receive a certificate, flowers and cake from Simma's Bakery. Register online before the festival or at the Love of God Cathedral booth during the festival.

NO VIDEO CAMERAS ALLOWED ON PRIDEFEST GROUNDS.

Get THE BEST IN SEX TOYS



YOUR SATISFACTION IS OUR BUSINESS

The Tool Shed is an erotic boutique featuring quality products and events that promote healthy sexuality for all genders.

LGBT (yes, all four letters!) owned & operated.
Everyone welcome!



2427 N Murray Ave.
on Milwaukee's East Side,
near North Avenue
414-906-5304



Mention this ad to get **15% OFF** your in-store or online purchase in June! (Use the code "PRIDE09" at online checkout)

www.toolshedtoys.com

6 - 8 p.m. - SEE 'N B SCENE

Youth Stage

Shhh...This year's youth events are a surprise, so you'll have to check out the stage to see what's happening. It may be a fashion show; it may be role-playing. Who knows? Come and find out!

6:45 p.m. - MILWAUKEE PRIDE PARADE AWARDS
Dance Pavilion

Milwaukee Pride Parade presents the awards for Best Float, Best Marching Unit, and many other categories for the 2009 Milwaukee Pride Parade. This will be the 5th annual Pride Parade under its current administration. The parade route begins at the intersection of 2nd Street and Greenfield Avenue, and will continue down 2nd Street ending at the intersection of 2nd Street and Seeboth Avenue.

www.prideparademke.org

7 - 10 p.m. - PUMP! DJ SHOWCASE

DJs PSYCHO BITCH & TERI BRISTOL

Dance Pavilion

DJ PSYCHO BITCH
With energy to spare and personality to match, DJ Psycho-Bitch grabs your attention and never lets up. Psycho-

Bitch's two-decade career has established her as an underground music pioneer. From the smooth, textured quality of her opening sets to the slam-bang-boom of her peak hours, Psycho's musical arrangements are stunning and flawless.

www.myspace.com/djpsychobitch





The Milwaukee
LGBT Community
Center wishes
everyone a safe
and joyous 2009
PrideFest.

*united by diversity,
united in diversity.*

315 W. Court Street,
Milwaukee, WI 53212

414-271-2656

mkelgbt.org



Milwaukee LGBT Community Center

FIND YOUR BIG LIFE.

Diverse and Resilient is committed to the development and celebration of healthy lesbian, gay, bisexual, and transgender people who thrive and find satisfying lives in Wisconsin. While our work is often behind the scenes, our programs stretch from Eau Claire to Milwaukee and Madison to Green Bay.

We believe that LGBT people are good. LGBT youth and adults are beautiful, creative, flexible, and smart. They are deeply connected to one another, to their families, and to their communities. They are born leaders and cooperative. Without LGBT people, Wisconsin communities would be at a loss in education, science, public service, health care, religion, business, industry, and the arts.

At Diverse and Resilient, we are proud of our accomplishments. In the past year, we have worked with the *Milwaukee LGBT Community Center/Project Q*, *OutReach (Madison)*, *Lesbian Alliance of Metro Milwaukee*, *SAGE Milwaukee*, *Positive Voice (Green Bay)*, *HarmonyCafé (Appleton)*, the *GLBT Partnership (Appleton)*, *LGBT Resource Center for the Seven Rivers Region (La Crosse)*, *Teens Like Us (Madison)*, *GSA for Safe Schools (Madison)*, *PrideFest Milwaukee*, and the *AIDS Resource Center of Wisconsin*.

We have worked on health promotion and disease prevention, including our higher risks for violence, alcohol and drug use, tobacco use, and mental health disorders. Diverse and Resilient recognizes that our community problems are within our power, even though their source traces to the stressors which oppressive systems put on us.

In the past year we have also partnered with the *University of Wisconsin - Milwaukee*, *Medical College of Wisconsin*, the *University of Wisconsin School of Medicine and Public Health*, the *Wisconsin Department of Health and Family Services*, *Marquette University*, the *Greater Milwaukee Foundation*, the *Women's Fund of Greater Milwaukee*, the *Faye McBeath Foundation*, and the *Brico Fund* to address these individual and community problems.

To do our work, we distribute nearly \$5,000 per month to organizations and community leaders who do the daily hard and exciting work of promoting health and building community.

These works - these partnerships - are about you.

We are proud of lesbian, gay, bisexual, and transgender people in Wisconsin.

WE ARE PROUD OF YOU.



2439 North Holton Street
Milwaukee, WI 53212

414.390.0444

www.diverseandresilient.org



Diverse&Resilient

DJ TERI BRISTOL

Known around the world as one of the hottest female DJs in the business, Teri Bristol's unique sound and personality brings life to every song she plays. Always new and on the cutting edge, Teri Bristol is always creating. Her latest release is *Dirty & Sweet* and was the follow-up single to *Teenage Waste Land* and *Hooked on a Bass Line*.
www.teribristol.com

10:30 p.m. – Midnight PUMP! DJ SHOWCASE DJ JERRY GRIFFITH Dance Pavilion

DJ Jerry Griffith hails originally from San Francisco. Jerry learned to spin in 1998 at the one gay bar in Columbia, Missouri (his college town), and he has been evolving as a DJ ever since. Several gay bar closings and a general lack of interest in good house music in Kansas City has forced Jerry to look elsewhere for a night-life that still "gets it."



PLUS SPECIAL EFFECTS BY:

9 – 11:45 p.m. FIRESIRENS Dance Pavilion THE FIRESIRENS

The FireSirens come to us from the deserts of Black Rock City, Nevada. They formed in 2002 and have been captivating audiences ever since. Russian Wulfgar, Banshee Om, and Vegalume Redstart unite their talents with fire poi, fire hoop, fire staff, fire fans, fire rope and glow tools into a show that will not be forgotten.
<http://www.myspace.com/firesirens>



10:30 – 11:45 p.m. CYON FLARE Dance Pavilion

Robert Mitchell evolved into Cyon Flare through his love of costumes, cha-cha shoes, Las Vegas showgirls and Liberace's creative use of glitter and feathers. Cyon Flare hopes to bring more light into every community that hears his songs and experiences his performances. His goal as an artist/entertainer is to use his gifts to reach all people, straight, gay, young and old.
www.cyonflare.org



7 – 11:45 p.m. - VJ BRYE Dance Pavilion

Big screens! Mental motion video madness! VJ Brye brings the visual component of a great night out every time he fires up his projectors. Surrounding himself with computers, controllers, effects processors, DVDs and cameras, the only missing ingredients to his visual gumbo are bangin' beats and a good vibe.
www.MySpace.com/vjBrye



10 p.m. - SEPTEMBER

Dance Pavilion

Swedish dance singer, Petra Eos Marklund, started recording music in studios at the age of 12. By 18, she gained a record deal, began using the stage name "September" and released her first top-10 hit, "La La La (Never Give It Up)." The single was followed by "We Can Do It," which became her second top-10 hit. As a result of these two singles, her debut album was recorded and released in February 2004, along with the third hit single from the album, "September All Over."

September went quiet until she broke the silence by releasing "Satellites," the first single from her second album, *In Orbit*, which became her biggest hit to date. The song currently stands at number 139 in the Swedish All-time Best-performing Singles Chart. Her biggest worldwide hit to date has been "Cry for You."



September's third album, *Dancing Shoes*, was released in 2007 after putting out her single, "Can't Get Over." The second single released from the album is "Until I Die." September released her eleventh single, "Because I Love You" a week before releasing her third compilation album, *September - Gold*.

September continues the tradition of top-quality, exported Swedish pop/dance music. She explained, "We like to make music. People have their own studios and set up their own productions. Artists like Robyn and Basshunter have done well outside Sweden and I hope to have more success also."

<http://www.septembermusic.se>
www.myspace.com/septemberinorbit

You are holding a special edition of Quest Magazine produced especially for PrideFest to honor the 22nd year of Wisconsin's Pride Celebration.

Although we did not print a regular issue with your favorite columns, features, photos, national and state news, we will put up a special mini-version online. Late breaking news stories, features and of course the Quest News Update with links to news stories from around the world.

You can also view or print out the current issue.

Point your browser to:

www.quest-online.com

PRIDEFEST 2008 SUNDAY HEADLINE SHOW

7 p.m. HEADLINE SHOW
Miller Lite Main Stage



HOSTED BY KAREN WILLIAMS

Viewer discretion advised for adult language

Karen is known for her quick repartee, insightful commentary and audience rapport. She is a comic craftmaster, a gifted actor, a multit talented writer, and an inspirational lecturer, whose HaHa Institute attracts clients from the public and private sectors. "I Need a Snack" is her newest solo comedy project.

www.hahainstitute.com



SPECIAL PERFORMANCE BY:
THE HEAT BIRDS

The Heat Birds is an acoustic ensemble with an eclectic mix of vocal and musical styles. This theatrical sextet incorporates clarinet, trombone, ukulele, guitar, mandolin, percussion, accordion, and upright bass into their performances, seamlessly merging multiple musical styles. Band members include: Ausberto Acevado, Nathan Bojko, Louis Demeo, Pauline Esposito, Tony Esposito, and Stephanie Stahl.

www.myspace.com/heatbirds



WELCOME . . .
VERY SPECIAL GUEST
DEBORAH COX

Born July 13, 1974, Deborah Cox is a Canadian R&B singer/songwriter and actress. Her 1998 song "Nobody's Supposed to Be Here" held the record for longest-running No. 1 single on Billboard's Hot R&B/Hip-Hop Songs chart (14 weeks), a record held for nearly eight years. She has achieved nine No. 1 hits on Billboard's Hot Dance Club Play chart, and is often cited as Canada's top R&B artist.

Having conquered the R&B, pop and dance charts as

DEBORAH
COX



released in 1995, achieved platinum status, as did her release, One Wish (1998), which garnered smash hits, "We Can't Be Friends" and "Nobody's Supposed to Be Here." 2002 saw the release of The Morning After and later an album compiling all of her best dance remixes entitled Deborah Cox: Remixed. In 2007, she paid effusive tribute to a childhood idol of hers, the beloved Dinah Washington, with her Decca album, Destination Moon. The album garnered Deborah a Grammy Award nomination in 2008.

Now, six years and two children after her last studio album of new material, another new chapter in Deborah Cox's career beckons.

www.deborahcox.com

another of ace record executive Clive Davis' discoveries and starred on Broadway in Elton John's and Tim Rice's "Aida," the Toronto-born singer/actress now returns to the world of R&B with her new album, The Promise.

"What is so great about this album is that it was a complete collaborative effort, so everyone brought something to the table. Everyday life and people, friends talking to me about their life and relationships, the good and the bad all helped inspire some of these songs. At the end of the day, it is just an honest collection of songs that everyone can find meaning in."

Her first album, Deborah Cox, was



WELCOME . . .
ETTA JAMES
AND THE ROOTS BAND

With a new slimmed-down look and a rejuvenated stage show, the truly legendary Etta James showcases her enduring artistry on her new album, All the Way. She is best known for performing "At Last," featured in many movies, television shows, commercials, and web services.

Born Jamesetta Hawkins on January 25, 1938, James is an American blues, soul, R&B, rock and roll, gospel and jazz singer/songwriter. Her accomplishments include four-time Grammy award winner, two-time Grammy Hall of Fame inductee (1999 & 2008), 17-time Blues Music Awards winner, 1993 Rock and Roll Hall of Fame inductee, NARAS Lifetime Achievement, Rhythm & Blues Foundation Pioneer awardee, W.C. Handy Blues Foundation honoree, her own star on the Hollywood Walk of Fame.

All the Way is, Etta proclaims, an album that allows her "to sing the songs that people need to hear," a constant theme in her career since 1955 when she was discovered by Johnny Otis as a teenager. It was the bandleader and talent scout who produced that first hit, "Dance With Me Henry," which immediately topped R&B charts nationwide. Her 16-year tenure with Chess Records beginning in 1960 produced landmark hits including her signature tune, "At Last," along with "All I Could Do Was Cry."

"My Dearest Darling," "Trust In Me," "Something's Got A Hold On Me," "Tell Mama," "Fool That I Am" and "Don't Cry Baby" comprised a run of charting records that ranked Etta the third prolific female R&B vocalist of her era, just behind Aretha Franklin and Dionne Warwick.

Now with All the Way's contemporary classics and time-honored standards, Etta James says she is ready for "the next adventure! You know, now that I've lost all the weight, I can stand up on the stage again like I used to after five years of sitting down while I sang. I look out at the audiences and I say, 'how do all these young eyes who are looking at me know my music?' The range goes from 17- and 18-year-olds to some of those older folks, 50 to 70, who are in there hollerin' away for me to sing one of my songs!"

www.etta-james.com



A SPECIAL THANK YOU TO OUR MANY GENEROUS SPONSORS OF PRIDEFEST 2009!



**MILLER LITE
DECIBEL
CREAM CITY FOUNDATION
DOUBLE TREE HOTEL
IRON HORSE HOTEL
PUMP!
ARCW**



**DIVERSE & RESILIENT
MILWAUKEE LGBT COMMUNITY CENTER
MILWAUKEE GAY ARTS CENTER
JOSEPH R. PABST LGBT INFRASTRUCTURE FUND
LA CAGE
FORGE
VERIZON
GRUBER LAW OFFICES
CHICAGO PRIDE
CENTAUR MUSIC
42 BELOW
BACARDI RUM
EM GRAPHICS
MMK DESIGN**

Radio:

**JAMMIN 98.3
Z104
95.9 KISS FM
MILWAUKEE'S 94.5 LAKE
B 93.3
SMOOTH JAZZ 106.39
IParty RADIO
FUSION RADIO CHICAGO.COM
88.9 RADIO MILWAUKEE**

Print:

**QUEST
Wisconsin LGBT News & Entertainment
CHICAGO FREE PRESS
WINDY CITY MEDIA GROUP
GAY PARENT MAGAZINE
OUR LIVES
THE ONION
SHEPHERD EXPRESS
ISTHMUS
4PM MAGAZINE**

Help After Harm: A Guide of Hope for LGBT Victims of Crime



Get your free copy in the Health and Wellness
area @ Pridefest or online at
www.forge-forward.org



po box 1272 | milwaukee, wi 53201
info@forge-forward.org | 414.559.2123

This project was supported by Grant No. 2005-VF-GX-K032 awarded by the Office for Victims of Crime, Office of Justice Programs, U.S. Department of Justice (Grant). Points of view in this documents are those of the author and do not necessarily represent the official position or policies of the U.S. Department of Justice or the Maryland Crime Victims' Resource Center, Inc.

www.forge-forward.org



Upgrade. Downtown.

Introducing the DoubleTree Hotel of Milwaukee

Wisconsin's newest DoubleTree Hotel in downtown Milwaukee has already been rated as a Top 10 DoubleTree Hotel nationwide by travelers just like you! Is it the great location, the generous amenities, or the recent renovation that included new furniture, luxurious bedding, decor, carpet, granite vanity tops and cherry wood cabinetry? Yes.

- Walking distance to the Bradley Center, Marquette Campus, and Grand Avenue Mall
- Across from the Midwest Airlines Convention Center
- 24-hour covered valet parking
- Business center and fitness center
- On-site Avenue Bar & Grill
- Complimentary high-speed wireless Internet



The Hilton Family

611 W. Wisconsin Avenue • (414) 273-2950 • www.DoubleTreeMilwaukee.com



Support
Advocacy
Research & Training
Resources & Education
Technical Assistance

www.



PO BOX 1272 | MILWAUKEE WI 53201 | INFO@FORGE-FORWARD.ORG

- FORWARD.ORG

Serving the community since 1994.
Visit FORGE's booths in the
Health and Wellness Area

Wisconsin LGBT Groups and Organizations

LGBT Arts, Sports and Entertainment Organizations

Cream City Chorus
315 W Court Street
Milwaukee, WI 53212
(414) 276-6787
www.creamcitychorus.org

Cream City Squares
(414) 445-6080
ddlgem@execpc.com
www.iagdc.org/creamcity

Front Runners
(414) 332-1527

GAMMA - Milwaukee
PO BOX 1900 Milwaukee, WI 53201
(414) 530-1886
gamma@milwaukeegamma.com
www.milwaukeegamma.com

Holiday Invitational Tournament
PO BOX 898 Milwaukee, WI 53201 (414) 881-8071
director@hitymilwaukee.org
www.hitymilwaukee.org

Harmony Cafe
233 E. College Ave., Appleton 54918
520-734-2233
www.harmonycfe.org
www.myspace.com/harmonycfe

Men's Voices Milwaukee c/o U.C.C.
2717 E. Hampshire St. Milwaukee, WI 53211
(414) 861-5526
www.mvmchorus.org

Milwaukee Kings
www.myspace.com/milwaukeekings

Metro Milwaukee Tennis Club
3957 North 81st Street
Milwaukee, WI 53222 (414) 516-3716
moenall@MSN.COM
www.milwaukeeclutennis.com

Milwaukee Gay Arts Center
203 S 2nd Street
Milwaukee, WI 53204 (414) 383-3727
milwagac@yahoo.com

Milwaukee Pride Parade
P.O. Box 070177
Milwaukee, WI 53207 (414) 607-3793
www.prideparademike.org

PrideFest
PO BOX 511763 Milwaukee, WI 53203
(414) 272-3378 www.pridefest.com

Saturday Softball League
2333 N 56th Street Milwaukee, WI 53210
(414) 350-7147
www.ssbmilwaukee.com

Shoreline Country Dancers
2809 E. Oklahoma Ave Milwaukee, WI 53207
info@shoreline-milw.org
www.shoreline-milw.org

Wisconsin Gay Hockey
(414) 202-5874
wigayhockey@wiwm.com
home.wiwm.com/wigayhockey

Women's Voices Milwaukee
315 W Court St Milwaukee, WI 53212
(414) 534-5645

LGBT Service and Advocacy Organizations

Center Advocates
315 W Court Street
Milwaukee, WI 53212
(414) 271-2656
www.cenradvocate.org

Charles D Productions
315 W Court Street
Milwaukee, WI 53202
(414) 263-9999
charlesdprodinc@sbcbglobal.net
www.charlesdprodinc.com

Connexus
12408 East Brady Street
Milwaukee, WI 53202

Cream City Foundation
759 N. Milwaukee, Suite 212
Milwaukee, WI 53202
(414) 225-0244
director@creamcityfoundation.org

Diverse And Resilient
12408 East Brady Street
Milwaukee, WI 53202
(414) 390-0444
director@diverseandresilient.org
www.diverseandresilient.org

Fair Wisconsin
122 State St. Suite 309
Madison, WI 53703
(608) 441-0143
www.fairwisconsin.org

FORGE
PO Box 1272
Milwaukee, WI 53201
www.forge-forward.org
info@forge-forward.org
414-889-2123

G/L Community Trust Fund
PO BOX 1686 Milwaukee, WI 53201
(414) 643-1652
glc@communitytrustfund.com
www.glcommunitytrustfund.com

Galano Club
315 W Court St. Suite 201
Milwaukee, WI 53212
(414) 276-6936
mail@galanoclub.org
www.galanoclub.org

Gay/Bi Fathers Support Group
c/o Outreach, 600 Williamson St.
Madison, WI 53703
serving Dane, Rock, Jefferson counties
for location & dates email jim at
dooguy@charter.net

Gay Youth Milwaukee
PO BOX 090441
Milwaukee, WI 53209
(414) 265-8500

Gemini Gender Group
PO BOX 44211
Milwaukee, WI 53214
(414) 297-9328

Human Rights League/Political Action Committee (HRL-PAC)
PO BOX 510407
Milwaukee, WI 53203
(414) 319-9863
www.hrl-pac.org

Lesbian Alliance
315 W Court Street
Milwaukee, WI 53212
(414) 272-9442
lamm@milwpc.com

LGBT Center of SE Wisconsin
1456 Junction Ave. Racine, WI 53403
ph: (262) 664.4100 fax: (262) 664.4101
info@lgbtsewis.org

Log Cabin Republicans
PO BOX 199 Milwaukee, WI 53201
(414) 755-1554
membership@lcrwi.com

Milwaukee LGBT Community Center
315 W Court Street
Milwaukee, WI 53212
(414) 271-2656
www.milwlgc.org

Pathfinders
1614 East Kane Place
Milwaukee, WI 53202
(414) 271-1560
info@tcmlw.org
www.tcmlw.org

PFLAG Milwaukee
315 W Court Street
Milwaukee, WI 53212
(414) 299-9198
pflagmilwaukee@hotmail.com

PFLAG Racine/Kenosha
PO BOX 580058
Pleasant Prairie, WI 53158
(262) 694-2729
pflagkenosha@aol.com

Positive Direction Milwaukee
(414) 461-5894

Positive Voice
PO Box 1381
Green Bay, WI 54305-1381
(920) 435-4404
info@pvinc.org www.pvnc.org

Project Q
315 W Court St. Milwaukee, WI 53212
(414) 223-3220
kurt@projectq.org
www.projectq.org

Queer Program
PO BOX 090441
Milwaukee, WI 53209
(414) 265-8500
queerprgm@aol.com

Queer Zine Archive Project
2935 N. Frabney St.
Milwaukee, WI 53202
qzap@qzap.org
www.qzap.org

Rainbow Over Wisconsin
702 East Wisconsin Avenue
Appleton, WI 54911
www.rainbowoverwisconsin.org

SAGE Milwaukee
1845 North Farwell Suite 220
Milwaukee, WI 53202
(414) 224-0517
email@sagemilwaukee.org

Transgender Aging Network
6990 N Rockledge Ave
Glendale, WI 53209
(414) 540-6456
loneed@aol.com

UWM LGBT Resource Center
UWM Union WG89 P.O. Box 41
Milwaukee, WI 53201
(414) 229-4116
jrmurray@uwm.edu
www.uwm.edu/bepc/USU/LGBT

Wisconsin Rainbow Alliance of the Deaf
P.O. Box 353 Hartland, WI 53031
www.wiscrad.org

LGBT Neighborhood Associations

Bay View GAYS
(414) 482-3796
bvgpresident@bvgays.com
www.bvgays.com

Washington Heights Rainbow Association
(414) 258-5834
washhtrbrainbow@aol.com
www.washingtonheightsrainbow.org

Wauwatosa Rainbow Association
(aka Rainbow Fireflies)
(414) 774-9470
tosarainbow@yahoo.com

LGBT Social Groups

Argonauts of Wisconsin
PO Box 22096 Green Bay, WI 54305
www.argonautsill.org
argonauts@sbcbglobal.net

Black and White Men Together
PO Box 80388 Milwaukee, WI 53208
(414) 461-5358
bwm@milwaukee@aol.com
www.bwm@milwaukee.org

Bear Club 4 Men
PO Box 13463 Green Bay, WI 54307
www.bcm4m.com

Brew City Bears
PO Box 1035 Milwaukee, WI 53201
(414) 331-3744
info@brewcitybears.com
www.brewcitybears.com

The Brunch Club
jennieragland@wiwm.com

Castaways
PO BOX 1697
Milwaukee, WI 53202

Dodge County Gay/Bi Men's Social Group of Wisconsin
http://groups.yahoo.com/groups/DCGMSG/
dcgmag@yahoo.com

Femme Mafia Milwaukee
www.myspace.com/femmecmafiamike

Great Lakes Harley Riders
PO BOX 341611
Milwaukee, WI 53234
boothchog@aol.com

Men (MenEnjoyNudism)
PO Box 0831 Milwaukee, WI 53207
(414) 258-4246
www.MENBrotherhood.org

N.E.W. Brotherhood
PO Box 12783 Green Bay, WI 54307
www.NEWBrotherhood.org

OVER 50 GAY MEN'S NETWORK
phone: 920-355-9713
e-mail: glanc@comcast.net

LGBT Welcoming Churches

Angels of Hope MCC
3607 Libal St. Green Bay, WI
angelsofhopemcc.org
angelsofhopemcc@netnet.net
920-993-7453

Appleton service at:
UCC Chapel 724 E South River Dr.

Church of Atheism
206 Vine St. Eau Claire, WI 54703
(706) 595-2680
church_of_atheism@yahoo.com
www.freewebs.com/churchofatheism

First Unitarian Society of Milwaukee
1342 N Astor Milwaukee, WI 53202
(414) 273-5257
office@umilwaukee.org
www.umilwaukee.org

Footstep Fellowship
First Presbyterian Church Chapel
(715) 355-8641
P.O. Box 171 Wausau, WI 54402
footstepfellowship@yahoo.com
footstepfellowship@footstepfellowship

Fox Valley UU Fellowship
2600 E. Philip Lane
Appleton, WI 54915
920-731-0846
www.fvuu.org

Lake Park Lutheran Church
2647 N Stowell St
Milwaukee, WI 53211
(414) 962-9190
office@lakeparklutheran.com
www.lakeparklutheran.com

Milwaukee Metropolitan Community Church
P.O. Box 1421 (1229 W Mineral St)
Milwaukee, WI 53204
(414) 383-1109
info@queerchurch.org pastor@mlccc.org
www.queerchurch.org

Plymouth Church
2717 E. Hampshire Ave.
Milwaukee, WI 53211 (414) 964-1513
plymouthchurch@choicemedia.com
www.plymouth-church.org

Underwood Baptist
1916 N Wauwatosa Ave
Wauwatosa, WI 53213
(414) 258-4246
office@underwoodchurch.com
www.underwoodchurch.com

Union Congregational UCC
716 South Madison St. Green Bay 54303
(920) 437-9266 Fax (920) 437-3765
unionucc@gbonline.com

Unity Church of Kenosha/Racine
5620 29th Ave. Kenosha, WI 53143
Rev. Don (262) 914-8389
hallodd@sbcbglobal.net

NEED A CORRECTION?
email editor@quest-online.com
Listings provided if space available.

Other Service Agencies with LGBT Programming

Aids Resource Center of Wisconsin
820 Plankinton Ave
PO Box 510408
Milwaukee, WI 53203
(414) 273-1591
www.arccw.org

Body East STD (BESTD)
1240 East Brady Street
Milwaukee, WI 53202
(414) 272-2144
bestd@execpc.com
www.bestd.org

Children Service Society of Wisconsin
1212 S 70th Street
Milwaukee, WI 53212
(414) 453-1400
jane.otlow@cssw.org
www.cssw.org

The Counseling Center of Milwaukee
2038 N. Bartlett Ave
Milwaukee, WI 53202
(414) 271-2565
info@ccmilw.org
www.ccmlw.org

OutReach
600 Williamson St. Suite P1
Madison, WI 53703
(608) 256-8582 (phone)
(608) 255-0018 (fax)
www.lgbt-outreach.org

STD Specialties Inc.
3251 N. Holton St.
Milwaukee, WI 53212
(414) 264-8800
www.STDSpecialties.org

WISCONSIN LGBT BAR GUIDE

LACROSSE/MADISON (608)

My Place 3201 South Ave La Crosse
(608)788-9073

Players 214 Main St, La Crosse
(608)784-2353

Chances R 417 Jay St, La Crosse
(608)782-5105

CLUB Impulse 132 W. Grand Ave.
Beloit, (608)361-0000

Club 5 Bar/Restaurant 5 Applegate Ct
Madison, (608)277-9700

OUT Niteclub 1262 John Q Hammond Dr
Madison (608)203-8338

Shamrock 117 W Main St.,
Madison (608)255-5029

WOOF'S 114 King Street, Madison
(608)204-6222 www.woofsmadison.com

Captain Dix (*Rainbow Valley Resort*)
4124 River Road WI Dells, WI (866) 553-1818

NORTHERN WISCONSIN (715)

Scooters 411 Galloway Street,
Eau Claire (715)835-9959

JT's Bar and Grill 1506 N. 3rd
Superior (715)-394-2580

The Flame 1612 Tower Ave
Superior, WI (715)395-0101

The Main 1217 Tower Ave
Superior, WI (715)392-1756

OZ 320 Washington St, Wausau
www.totheoz.com (715)842-3225

NORTHEASTERN WISCONSIN (920)

Rascals Bar & Grill 702 E. Wis.,
Appleton (920)954-9262

Ravens (NEW) 215 E. College Ave
Appleton (920)364-9599

Napalese 1351 Cedar Street,
Green Bay (920)432-9646

SASS 840 S. Broadway, Green Bay (920)437-
7277

THE SHELTER 730 N. Quincy St. Green Bay
920-432-2662 • theshelterclub.com

XS Niteclub
1106 Main Street, Green Bay

Club 1226
1226 Oshkosh Ave Oshkosh,
(920)651-1226

Blue Lite 1029 N 8th,
Sheboygan
(920)457-1636

ROCKFORD, IL (815)

The Office 513 East State
Rockford, IL (815)965-0344

SOUTHERN WISCONSIN (262)

Club ICON 6305 120th (Off I-94) Kenosha,
(262)857-3240 www.club-icon.com

JoDee's 2139 Racine St, Racine
(262)634-9804

MILWAUKEE (414)

Art Bar 722 Burleigh, (414)372-7880

Ballgame 196 S 2nd (414)273-7474

Babylon @ Three (Thurs only)
722 N. Milwaukee St (414)225-0003

Boom (& The ROOM) 625 S. 2nd St
(414)277-5040

Boot Camp 209 E National (414)643-6900

City Lights Chill 111 W. Howard Ave
(414)481-1441

JACK (New bar w/dancing for Men & Women)
200 E. Washington (414)389-3596

ETC 801S 2nd (lower Level), (414)383-8330

Fluid 819 South 2nd (414)643-5843

Harbor Room 117 E. Greenfield Ave.
(414)672-7988

KRUZ 354 E. National (414)272-KRUZ

LaCage Video Dancebar
801S 2nd, (414)383-8330

M's 1101 S. 2nd St. (414)383-8900

Midtowne Spa (*this is not a bar*)
315 S Water (414)278-8989

Mona's 1407 S. First St (414)643-0377

Nut Hut 1500 W Scott (414)647-2673

PUMP @ Decibel (Sundays only)
1905 E North Ave 414-272-3337

PURR Nite club 3945 N. 35TH
(off 35th & Capitol Dr.) Milwaukee

This Is It 418 E. Wells Street (414)278-9192

Triangle 135 E National, (414)383-9412

Two (Milwaukee's Make-Out Bar)
718 E. Burleigh St.

Walker's Pint 818 S 2nd St (414)643-7468

Wherehouse (Fridays only)
818 S. Water St. 414-383-7593

Woody's 1579 S 2nd (414) 672-0806

Thank you for letting our family be part of yours.

Happy PrideFest Wisconsin!

QUEST

BOUND

ZA's
Publications Ink

Providing a Voice for Wisconsin's LGBT Community for 16 Years

PUMP!

WEEKLY EVENTS



PUMP! **decibel**
MILWAUKEE NIGHTCLUB

EVERY SUNDAY!

DJ John Murges and other local and regional DJs

Weekly Drink Specials featuring Svedka, Bacardi & Jim Beam

Decibel • 1905 E North Ave, Milwaukee • (414) 272-3337 • DecibelMke.com



HOMO **THE ABBEY**

EVERY WEDNESDAY!

DJ John Murges

Weekly Drink Specials featuring Three Olives & Lakefront Brewery products

The Abbey • 134 E Juneau Ave (2nd Floor), Milwaukee • (414) 755-0333 • FatAbbey.com



BABYLON
THURSDAYS



EVERY THURSDAY!

DJ John Murges & DJ Plez

Weekly Drink Specials featuring Skyy & "Retro" Beers

Three • 722 N. Milwaukee St, Milwaukee • (414) 225-0003 • Threelounge.com

ALL EVENTS 21+ / ID REQUIRED



GREAT TASTE OF
PRIDE FEST 2009

