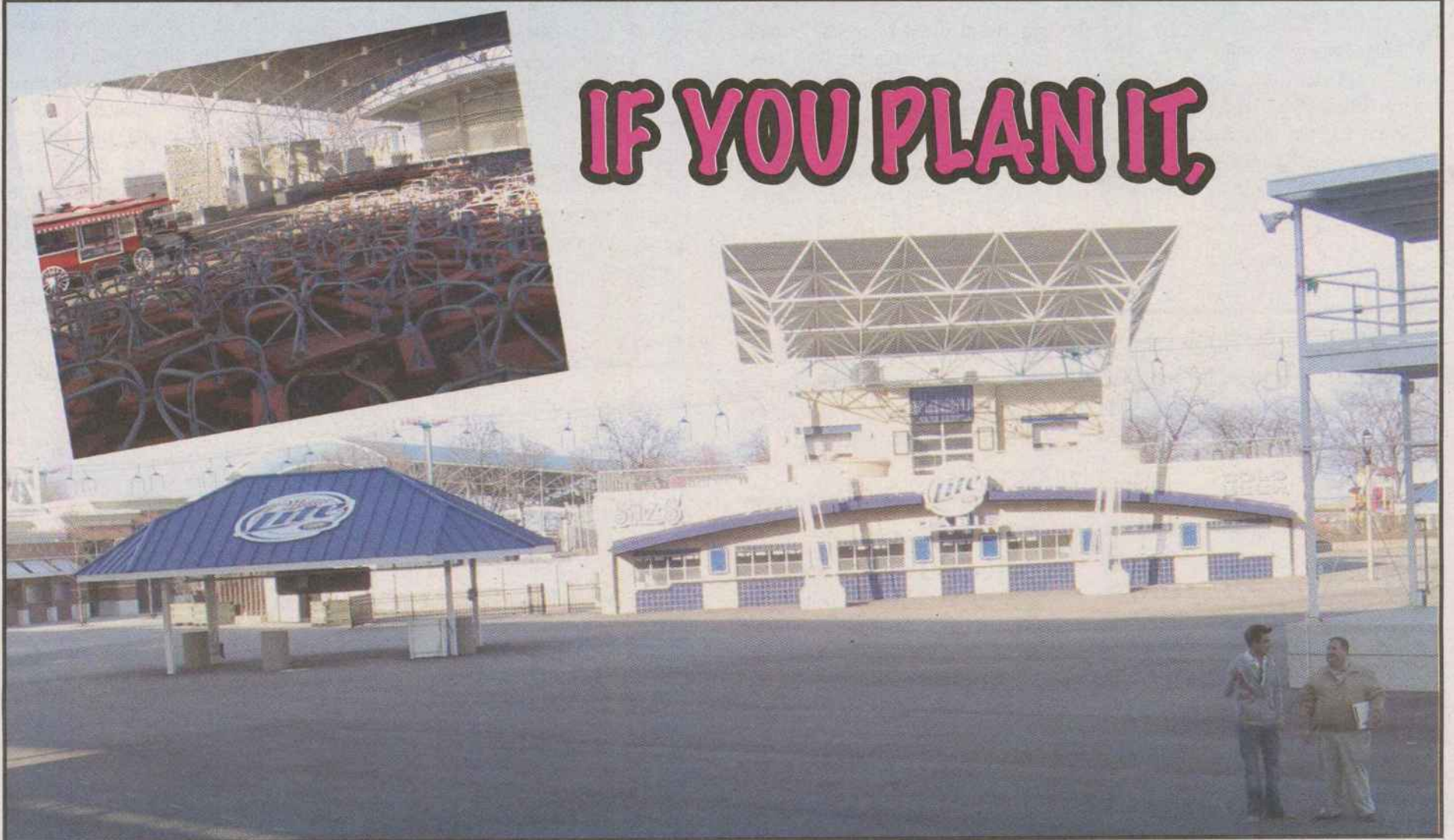




IF YOU PLAN IT,



THEY WILL COME....

By Alison Glendale

In the early 1970's Milwaukee was no wallflower when it came to forming a gay rights organization. The Gay Liberation Organization, (later re-named the Gay People's Union) and the Gay Liberation Front were both formed, and we can thank the GPU for bringing us the first big LGBT bash with their 1974 GPU Ball. The annual gatherings to follow were the birth of what we now know as PrideFest, now celebrating the 20th anniversary of the first LGBT pride events in Milwaukee.

Their move to the Henry Maier Festival Park, allowed them to throw a three-day music festival-which this year, has the biggest entertainment lineup of any Pride event in the nation. And it's only one month away.

Just how do the organizers of such an event put it all together? We wanted to know. So, after meeting with PrideFest President Scott Gunkel, and Marketing whiz Paul Williams, we decided to ask them! Many thanks go to them, and the rest of the production team for collectively answering our questions.

Queer Life: First of all, just how did you acquire Henry Maier Park?

PrideFest, Inc: It was a multi-year process of negotiations to get there in 1996. The team worked very hard, of course, but thanks also goes to Miller Brewing Company and key Miller executives who

advocated for PrideFest to be on the grounds.

QF: When do you start planning?

PF: It's become a year-round effort, with bookkeeping and overall management happening every month. The detailed planning for each festival begins in late October and things really start to roll in January. Actually, we never stop! We always look for ways to make it better and easier and to make sure people are going to come back.

QL: What kind of permits are needed?

PF: There are at least six permits required, from a noise permit to a coast guard permit to cut off the waterway around that island for the fireworks, to the fireworks permit. Every year there may be additional permits needed depending on the products sold on the grounds and activities that might require special variances.

PrideFest is the first festival of the season. Because of that, the post-winter clean up can be hectic. Painting of buildings comes before signs are hung. Pride flags go up, 800 chairs and 250 tables are ordered for the grounds - none of which gets accomplished without the help of dedicated volunteers. There are about 20 people who make up a core group of volunteers year round, but during festival weekend, the community really steps up and the volunteer numbers grow to about 1,500 people.

CONTINUED ON PAGE 4

COMMUNITY CALENDAR

MAY 4

Say Hello to the WNBA! Chicago Sky vs. Washington Mystics. Al McGuire Center on the campus of Marquette University. 7PM sharp! 12th street between Wisconsin Avenue and Wells Street. Tickets \$10-\$15 at Ticketmaster.com

Shoreline Country dancing 8:00 PM - 1:00 AM at Hot Water, 818 S. Water St (far east end of National Ave.) Free 2-step lessons at 8:30 and 9:30 pm. Open dancing includes 2-step, swing, waltz and line dance. For info call 414-747-0388 or visit www.shoreline-milw.org

MAY 5

African Night at Club Timbuktu 520 E. Center Street Milwaukee 414-265-7000. kt Universal Love Band 9:30 pm Lucky Diop and King Ibu 11:30 PM, Only 5\$

MAY 6

Cream City Squares Square dance Sundays, "friendship set to music." Singles, couples, and families are all invited. Lake Park Lutheran Church, 2647 N. Stowell Street. Lessons are 1-3pm, club dances are 3-4:30pm. Repeats every Sunday. For more information visit <http://iagsdc.org/creamcity> or e-mail djdilges@execpc.com.

MAY 6

FORGE (For Ourselves: Reworking Gender Expression) A social support group open to all people interested in Female to Male+ (FTM+) and Significant Others, Family, Friends, and Allies (SOFFAs) issues. Meets first Saturday of the month at 7pm. For more information: www.forge-forward.org/socialsupport/ or write info@forge-forward.org or call 414-278-6031.

MAY 7

BESDT Clinic Outreach at Midtown Spa, 315 South Water Street, (Milwaukee) 6-9pm. Free 30 minute HIV testing

MAY 10

Open Mic at Broad Vocabulary. Acoustic performances, poets, spoken word artists and others are welcome to share or simply come to listen! Sign up begins at 5:30pm, open mic begins at 6:00pm. 2nd Thursday every month at Broad Vocabulary, 2241 S. Kinnickinnic Ave. For more info: 414-744-8384.

QPICK

Ben Merens, host of the Wisconsin Public Radio program At Issue, and author of Uni-Tasking: 25 Tips for Better Listening Speaks at Schwatz Book store 4093 N. Oakland Ave. (414) 963-3111. 7p.m. Shorewood

MAY 11

QPICK

Save the Date! Gay Prom 2007. Holiday Inn-Milwaukee Center, 611 W. Wisconsin Ave. 7-11 pm. A sophisticated night of dancing, drinks & hor d'oeuvres benefiting the Milwaukee LGBT Community Center and SAGE/Milwaukee. All ages are welcome. Be sure to wear your most fabulous attire and don't forget to vote for your favorite "king" and "queen." Tickets on sale now at Outwards Books, Gifts & Coffee, the Milwaukee LGBT Community Center and SAGE/Milwaukee. \$45/person, \$80/couple. For more information contact Angie Guerra at 414-271-2656 x121.

MAY 12

QPICK

The Milwaukee Gay Arts Center (MGAC) invites you to an evening of exotic

entertainment, outstanding raffle gifts, and the wittiest, most cosmopolitan and urbane guest list on the planet. An elegant hors d'oeuvres buffet and liquid refreshments will be served! This special fund raising event will be held in the elegant atmosphere of the historic Brumder Mansion, a Victorian home resplendent with antiques. Help support the new theater, music, author and art series for the 2007-2008 season. 7:00 - 9:30 p.m. Brumder Mansion 3046 West Wisconsin Avenue \$50 donation 383-3727 milwgac@yahoo.com

Gemini Gender Group Support and social group for crossdressers and transsexuals, 6pm to 9:30pm, second Saturday each month.

MAY 18

The Milwaukee Chamber Theatre Friends will host their annual gala "Dinner with Friends - A Celebration" at 6:00 p.m. at the Woman's Club of Wisconsin, 813 E. Kilbourn Ave., Milwaukee. The gala will celebrate Milwaukee Chamber Theatre's successful 32nd season. Festivities include cocktails, hors d'oeuvres, dinner and a silent auction. Auction items include Midwest Airlines tickets, a house concert by Linda Stephens, a 14-carat gold necklace and many other unique items. Milwaukee favorite Ray Jivoff and pianist David Brady will provide entertainment. Tickets are \$150 per person and \$1,200 for a table of eight. To join the celebration or for more information, call Sandy Roller at 414-422-0390.

MAY 18

Come join Sommelier Guy Poitras an evenings of wine tasting! Focus on Wines of the New World Tuition \$65. Also sign up for June 15 session on White Wines for Summer. Alliance Française de Milwaukee-1800 E. Capitol Dr, Shorewood, WI 53211

MAY 19

Miltown Kings perform at the Miramar Theater. 2844 N. Oakland Ave. Milwaukee. 9pm. 18 and older. 7\$ cover Info: 414.967.0302

Attend a class on creating your own artist book. Artist books are intended as artworks themselves. They often illustrate an idea through their shape, binding, materials and images. In this advanced workshop, you will explore samples, learn different binding techniques, and delve into a surprising mixture of supplies to create your own book. Bring an idea—a song, a poem, and an image, anything that you love or enjoy and transfer that love into something tangible and beautiful. Please call 414-277-7699 to reserve your spot. Broadway Paper, 191 N. Broadway, Milwaukee. 12 - 4 PM \$60.00

MAY 20

PFLAG Milwaukee Meets third Sunday, 5-7 PM. Martin Luther Lutheran Church, 9235 W. Bluemound Rd. For more information leave a message on group's voice mail 414-299-9198 or visit www.pflagmilwaukee.org

MAY 22

BESTD Clinic Outreach at Midtown Spa, 315 South Water Street, Milwaukee 6-9pm Free 30-minute HIV testing

MAY 31

Open Mic night at Bremen Café. 901 E. Clarke St., Milwaukee. 9pm. The city's best Open Mic.

June deadline is May 18, 2007.



The
Chanticleer
Guest House

4 Secluded Luxury Cabins
8 Beautiful Suites

All on 70 private acres

• Double Whirlpool • Fireplace
• Private Bath
• Heated Pool in Summer!

Enjoy the beauty and serenity
of Door County.

Gay owned and operated since 1993

Please call Darrin and Bryon,
Toll free 1-866-682-0384

For online reservations:
www.chanticleerguesthouse.com

QLife Quickies

Go get 'em, k.d.

Los Angeles — The Los Angeles superior court has awarded singer k.d.lang \$1.9 million in damages against her former manager Annabel Lapp.

Lang alleged that Lapp stole hundreds of thousands of dollars and misappropriated an unknown sum of money from Lang's bank accounts. According to Lang, after she fired Lapp, the manager wrote five checks for over \$20,000 without Lang's permission.

Lang will tour the United States this summer with Lyle Lovett.

NH governor to sign bill civil unions bill

Concord, NH — Gov. John Lynch says he will sign legislation establishing civil unions in New Hampshire, making it the fourth state to adopt civil unions and the first to do so without first having a court fight over denying gays the right to marry.

Lynch had previously declined to take a public position on civil unions. He came under fire from both sides for not weighing in — especially after the surprise delay of the Senate vote on the House-passed bill.

Lynch noted his support for same-sex benefits when he was a trustee in the state university system. But had said he opposes gay marriage.

Lynch said he is confident it will pass. If so, NH would authorize civil unions beginning next year.

CONTENTS

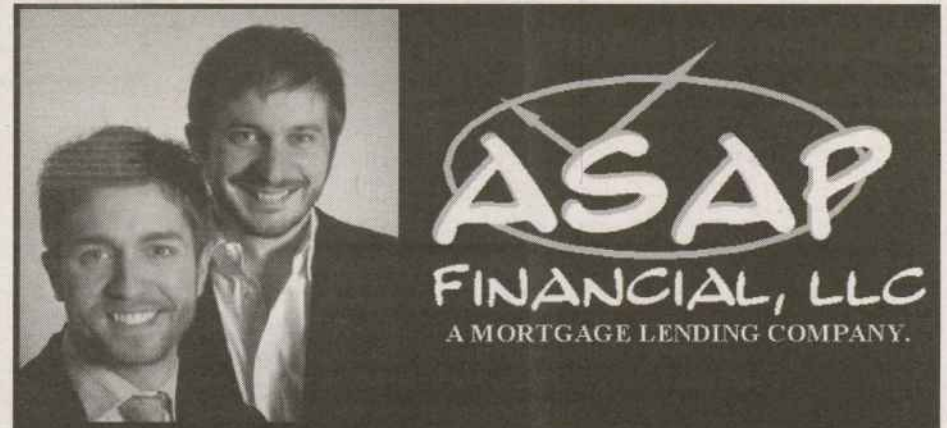
Vol. 3 Issue 5 • May 2007

- 6 Q Wisconsin Happenings**
- 7 Q National Happenings**
- 8 Q International Happenings**
- 8 Forge Forward and Beyond
- 9 Sail into Summer-Even if You Don't Own a Boat
- 10 Q Lesbian View:** There's Hope
- 10 Foster Parents Needed
- 11 Q Politics:** Backlash to a Backlash
- 11 Open-minded About Open Office
- 12 Q Editorial:**
- 13 Q Religion:** Mary's Baby on Mother's Day
- 14 Q Fitness:** Pure Testosterone
- 15 Q Health:** Great Disparities and Great Connections
- 16 Q Transgender:** People like me!
- 16 LGBT Higher Smoking Rates
- 17 Q Zines:** Zines To Read In Denver When You're Dead
- 18 Handy Matters
- 19 Q Youth:** Not so Many Degrees of Separation
- 20 Q Women:** DITC: Dykes In The City
- 21 This Month in LGBT History:** May
- 22 Q Parenting:** Promoting Diversity in Your Home
- 23 Cream City Foundation Announces Spring Grants
- 23 State Invests in ARCW Dental Clinic
- 24 Q Passings:** Paul Jensen
- 24 Q Cooking:** Celebrating Mother's Day with Herman*
- 25 Q Arts Calendar:** May 2007
- 26 Q Theater:** Confessions From Our Favorite Redhead

Congratulations Diverse and Resilient

In Last month's issue, we published a small press release about the Medical College of WI's Healthier Wisconsin partnership Program, and the awarding of organizational grants to the tune of \$7Million. One such grant recipient, was Diverse and Resilient, who received \$50,000 for an 18-month study on Intimate Partner Violence in the LGBT Community. They will partner with

Carol Gallety JD, PhD, and David Seal, Ph.D. to conduct an 18-month development project to assess the readiness of selected LGBT communities in WI to implement support services for LGBT victims/survivors of intimate partner violence. Congratulations Gary, Brenda, and the entire staff of D&R., we look forward to hearing the outcome.



WE HAVE MORTGAGES FOR EVERYONE'S NEEDS!

HOME PURCHASES
REFINANCES
INVESTMENT PROPERTIES
COMMERCIAL PROPERTIES
DEBT CONSOLIDATION
BANKRUPTCY
FORECLOSURES
STATED INCOME LOANS
CASH OUT FOR ANY REASON!!

207 E. BUFFALO STREET, SUITE 508, MILWAUKEE, WI 53202

414-289-8368 or 877-641-ASAP



www.asapfinancial.net



Sick and Tired

of being

Sick and Tired?

**Then check out the Galano Club of Milwaukee...
a 12-Step recovery club for LGBT people!**

Meeting Schedule:

Alcoholics Anonymous

Sunday: 10:30am & 7:00pm

Monday: 7:30pm

Tuesday: 5:30pm

Wednesday: 7:00pm

Thursday: 7:00pm

Friday: 7:00pm

Saturday: 6:30pm (women's meeting) & 7:30pm

Narcotics Anonymous

Friday: 7:00pm

Sexual Compulsives Anonymous

Sunday: 6:30pm

Tuesday: 7:00pm

Thursday: 7:00pm

AI-Anon

Sunday: 10:30am

315 W. Court Street, 2nd Floor

Milwaukee, WI 53212

Phone: 414-276-6936

Email: mail@galanoclub.org

Website: www.galanoclub.org

PrideFest *continued from page 1*

QL: How much does PrideFest cost?

PF: It costs a pretty penny . . . just over \$400,000 this year.

QL: How is the money raised to throw this event?

Each year is different. We have some money we can pull from our bank account for upfront costs and we try to replenish those as soon as possible. Since we haven't gotten any of the bigger sponsor money yet, we had to make deposits out of our accounts to around \$100,000. That's why Derrick's work doing the marketplace is so important because it brings in a lot of cash flow. The checks the vendors bring in helps to alleviate the stress in raising money towards other payments. Also, we don't do fundraisers, because we are not a charity.

QL: What is the security system like?

PF: If we told you, we'd have to kill you. Seriously though, both PrideFest's and Milwaukee World Festival's (MWF) security teams constantly monitor activities throughout the grounds and in front of the gates. The grounds have a security command center constantly monitoring things. In regards to protesters, we respect their right to express their opinions as long as they do not threaten anyone. It's just too bad they feel compelled to try to ruin the celebration.

We also have a Red Cross team ready, the Fire Department, and an ambulance just in case.

Actually, every year, we get comments from other security staff that PrideFest has the least security problems of any festival. Generally, people at PrideFest treat each other with great respect.

QL: (With a nod to Barbara Walters,) if PrideFest "were a tree," what kind of tree would it be?

PF: No doubt we'd be a Christmas tree! Once a year, we stand out as the center of a celebration, with bright colors, and ornaments that have personal significance and we're always well-lit!

QL: How many attend PF annually?

PF: Attendance in 2006 was 23, 839, a 10% increase over 2005 and a new attendance record for PrideFest!

This year's entertainment lineup is one of the best in years. Chaka Khan, Kathy Griffin, and Joan Jett, whose show will open with this year's winner of the Pride Idol contest!



A. Gallegos

QL: How do you choose the entertainment?

PF: We are constantly surveying the available acts, their tour schedules and, of course, the cost. Contract negotiations take place over several months, generally around January and February. We'll negotiate with some of the artists for over a year because we think they would be a great fit for PrideFest. We also talk to people in the community to see who they are interested in seeing.

There were a few bumps in the road when booking the talent and the vendors for the marketplace. This year, a few acts ended up canceling and signing up for other venues. And when the LA PrideFest was rescheduled for the same weekend as Milwaukee's, some of the vendors pulled out to go to LA. Derrick Soto, the Marketplace Director had to fill those slots all over again. Generally, however, they have a pretty strong core of people who come back year after year. Typically, they have about 100 businesses and organizational vendors. Rarely, do they refuse a vendor; they do, however have to comply with city ordinances, and contracts with the Milwaukee World Fest Organization, and deny certain products for sale on the grounds.

Q: What kinds of products are not allowed?

PF: Well, anything that may be in violation of city ordinance, or anything that World festivals deems to be improper. We had an adult novelty two years ago that wanted to come in and World Festivals would not allow them. And, the board doesn't want to upset anyone either. We want to make sure the family sensibilities are taken into consideration.

QL: What is the most bizarre request you've had from an entertainer?

PF: Apparently, the backstage coffee wasn't strong enough for one entertainer, who became upset enough to call all the stagehands together, and spend 15 minutes instructing them on how to appropriately make the coffee. Everyone was made to do a taste test of the original coffee versus the new, improved coffee. The new coffee was indeed better, but the entertainer's attitude could have used a bit of work. And no, we're not saying who the entertainer was . . .

QL: How many barrels of beer do you go through?

PF: We go through about 240 half barrels every year. We have to pay for every tapped barrel, so over the years our volunteers in that area have developed a system to keep from overtapping on Sunday. I'd like to say we have a great party with the leftovers on Sunday night, but by that time we're so exhausted that the only good party involves a bed and a full night's sleep.



QL: How much toilet paper has to be ordered?

PF: That's a crappy question!

QL: Just how big of a mess is it when it's over?

PF: The Monday after PrideFest, a team of 40 people hits the grounds and works until things are cleaned up for the next festival. Every year - just like with our great security record - PrideFest is acknowledged as the cleanest festival! What can we say, we've got a friendly crowd that knows how to clean up after itself!

QL: Will you be expanding the Fest in upcoming years?

PF: We love the idea of continuing to grow, but the whole team is dedicated to making sure we can afford it. We want to use the grounds efficiently, plus we pay by the square feet so, that has some bearing on it. But really, people have a better time in a crowd, its better energy. We don't want people to be so spread out where they feel like they aren't at a party.

And what a party it will be! A three-day festival, which if you're smart, you can attend for \$30 for the whole weekend. To top it off, Milwaukee's very own Pride Parade caps Pride weekend Sunday afternoon. Carpool with friends, and make sure to make it to both events.

Members of the Production Team meet to plan operations of the festival. On the cover: David Charpentier, Entertainment Director, and Pete Minns, Festival Producer, discuss planning for the main stage.



PrideFest Fun Facts:

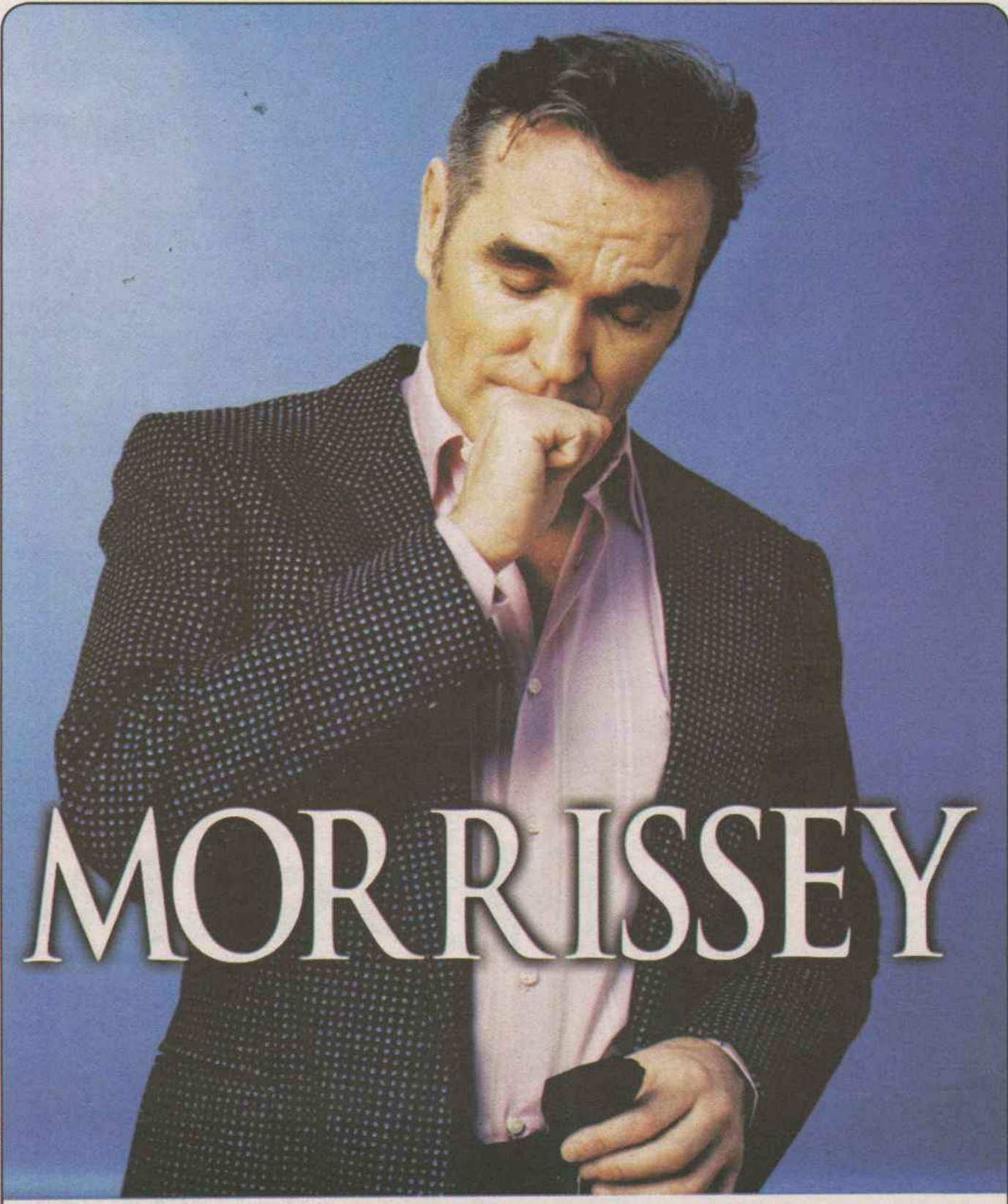
- About 150 band-aids are handed out for minor boo-boos at the First Aid station
- Attendees go through about 350 gallons of wine coolers each year
- PrideFest's food drive is annually the largest single-event food drive for the AIDS Resource Center of Wisconsin.
- In 2006 PrideFest contributed over \$20,000 to LGBT community groups, including organizations that provided volunteer support to the festival and a major contribution to Fair Wisconsin.
- In 2006, 18 couples took part in commitment ceremonies
- 2,900 firework shells went off at the 2006 PrideFest

Milwaukee's Favorite Indoor Concert Venues



The Pabst THE RIVERSIDE

pabsttheater.org | 414.286.3663 | riversidetheater.org | myspace.com/pabstriverside



MORRISSEY

SPECIAL GUEST
KRISTEEN YOUNG

\$34.50 Tickets

LIMITED C/A Main Floor Standing Room
Plus Main Floor & Balcony Reserved Seats

SAT. MAY 12

THE RIVERSIDE

Shepherd
EXPRESS

in association with Pacifica Artists Group

JUNE 2

FOX 6
WITI MILWAUKEE
welcomes

ELLIOT YAMIN

JUNE 26

102.1
INDIE SOUNDCHECK
the ONION
welcome

MATISYAHU

JUNE 16

WAW
WISCONSIN ARTS WEEK
welcomes

Césaria ÉVORA

SEPT. 19

95.7
WISCONSIN CLASSIC
welcomes

GORDON LIGHTFOOT

Concert Update

On Sale Now!

- MAY**
- 1 **UTAH PHILLIPS**
\$15 BUCK SHOW
 - 3 **AQUALUNG**
\$10 BUCK SHOW
 - 3 **ROBERT RANDOLPH AND THE FAMILY BAND AND ZIGGY MARLEY**
 - 5 **NORAH JONES** **SOLD OUT**
 - 12 HAL LEONARD JAZZ SERIES 2007
FRANK MORGAN
 - 12 **MORRISSEY**
 - 16 **MINUS THE BEAR**
\$12 ADVANCE / \$14 D.O.S.
 - 17 **FIVE FOR FIGHTING**
 - 18 **JUNGLE JACK HANNA**
 - 19 **CALIFONE & DECIBULLY**
\$10 BUCK SHOW
 - 21 **THE FAINT**
\$15 BUCK SHOW
- JUNE**
- 2 **BILL ENGVALL**
 - 2 **ELLIOT YAMIN**
 - 10 **CHICK COREA & BÉLA FLECK**
 - 12 **GODSMACK**
 - 15 **CHRIS THILE**
\$15 BUCK SHOW
 - 16 **CÉSARIA ÉVORA**
 - 26 **MATISYAHU**
- JULY**
- 24 **JOHN FOGERTY**
- AUGUST**
- 5 **THE PORN DEBATE**
FEAT. RON JEREMY & CRAIG GROSS
 - 7 **DREAM THEATER**
 - 8 **JOHN HIATT & SHAWN COLVIN**
 - 16 **GIPSY KINGS**
 - 17 **CROWDED HOUSE**
 - 19 **GLENN MILLER ORCHESTRA**
 - 26 **ALLMAN BROTHERS BAND**
 - 27 **RUFUS WAINWRIGHT**
 - 31 **DIANA KRALL**
CHRIS BOTTI
- SEPTEMBER**
- 19 **GORDON LIGHTFOOT**
 - 20 **STEVE VAI**
- NOVEMBER**
- 9 **THE MUSIC OF LED ZEPPELIN**
FEATURING THE MILWAUKEE SYMPHONY ORCHESTRA

Wisconsin



Happenings

MUSG recommends partner benefits

Milwaukee - At a recent legislative session for Marquette Student Government, domestic partner benefits were a highlight of the evening.

Recommendation 12, which passed in an 18-3 vote with three abstentions, calls for the university to offer domestic partner benefits to partners of administration and staff members who are in "committed homosexual relationships or committed heterosexual relationships for those unmarried."

Gay/Straight Alliance President and senior Jess Cushion spoke before the senate, telling them that offering domestic partner benefits falls within the university's non-discrimination clause, but the fact that the university does not offer domestic partner benefits illustrates how the university still discriminates against gay individuals.

"In essence, the university is discriminating against homosexuals because health benefits are offered to the families of faculty and administration, but not to the domestic partners of homosexual faculty and administration," Cushion said.

Responding to a question regarding gay faculty members imposing their homosexuality "upon the students", Jason Rae, author of the bill said the remark was a baseless claim that "continues the stereotypes of hatred"

The purpose of the legislation is to focus on how to make Marquette a better institution academically by providing benefits that will bring well-respected professors to Marquette who may not come otherwise.

La Crosse County OKs domestic partner benefits

LaCrosse - On a 20-6 vote, with one abstention, the La Crosse County board ratified two union contracts that extend medical and dental insurance and other benefits to unmarried partners of the opposite or same gender.

"This is not a political statement," said Board Chairman Steve Doyle, noting the move will save taxpayers money because the unions settled for less in raises to get the benefits.

The contracts are for 173 professionals and 252 paraprofessionals in Local 2484, who work in the Health and Human Services departments.

Personnel Director Robert Taunt estimated three people in each unit would convert from single to family coverage, at a combined cost of about \$39,000 a year. The savings of 1 percent in raises to the county is \$149,299.

"We need to be sensitive to the fact that times are changing," said Supervisor Sharon Hampson. "All around the country, domestic partner benefits are becoming more and more common."

Taunt said the measure contains a 12-month exemption for pre-existing conditions, and employees must sign an affidavit and show evidence of shared financial obligations, such as both names on a lease or utility bill.

New Gay Fraternity in Madison

Madison - The first gay fraternity in fifteen years is set to open on the UW-Madison campus. Rodolfo Alaniz, co-founder of Delta Lambda Phi said that the idea of starting a gay fraternity came up three years ago.

"I think that it's important for people who share a common background or a common perspective, even if they come from different places, to have that safe space to talk about who they are and where they fit into society," Alaniz said.

The students said that they are not surprised that it took years for a gay fraternity to re-emerge because Madison already has a strong Lesbian, Gay, Bisexual and Transsexual community in place for students.

Drew Willert, vice president of the Interfraternity Council, said the council is welcoming the idea of a gay fraternity.

"Anytime you go with something progressive, you are going to get some resistance. So I think it's a big step for us," Willert said.

"One of the most unique things about us is that we are a fairly ordinary fraternity," Delta Lambda Phi co-founder Jakob Aebly said.

Nationwide, there are 23 Delta Lambda chapters, including four Big Ten schools -- the University of Minnesota, Purdue, Ohio and Iowa State.

WE STAND UP FOR DIVERSITY



You have a **MOM** in PFLAG
Happy Mother's Day!

WE STAND AGAINST INTOLERANCE



PFLAG Milwaukee
414-299-9198
pflagmilwaukee@hotmail.com

Carnival Travel

790 N. Milwaukee St.
Milwaukee, WI 53202
414-276-3388

or email us:
travel@carnivaltravel.net



Downtown Milwaukee's premier travel agency

Personalized Travel Planning
one client at a time!

MEN'S VOICES MILWAUKEE PRESENTS

Mostly Love

"Listen to Your Heart"

KEN MCMONAGLE, ARTISTIC DIRECTOR

Saturday
June 2, 2007
8:00 p.m.

HELENE ZELAZO CENTER
UW-MILWAUKEE
2419 E. KENWOOD BLVD.

Tickets: \$15 advance, \$20 door
*\$15 WITH DONATION OF FOUR NON-PERISHABLE FOOD ITEMS TO THE HUNGER TASK FORCE

AVAILABLE FROM MVM AND THE ZELAZO CENTER BOX OFFICE:
(414) 229-4308

GROUP RATES AVAILABLE AND MAJOR CREDIT CARDS ACCEPTED



Hate Crimes Bill Renamed "Matthew Shepard Act"

Washington - The Local Law Enforcement Hate Crimes Prevention Act, was renamed the "Matthew Shepard Act" by Senator Ted Kennedy (D-MA) and Senator Gordon Smith (R-OR). The renaming of the Senate version of the legislation was done in honor of hate crime victim Matthew Shepard who died over eight years ago in Laramie, WY and highlighted the problem of anti-gay hate crimes for many Americans. The bill would strengthen the ability of law enforcement officials to investigate and prosecute hate crimes.

"Dennis and I are deeply honored that Senators Smith and Kennedy have renamed The Local Law Enforcement Hate Crimes Prevention Act the 'Matthew Shepard Act'. This is a beautiful tribute to our son and his memory," said Judy Shepard, Executive Director of the Matthew Shepard Foundation and mother of Matthew Shepard.

Doctors Promote Pap Tests for Gay Men

San Francisco - Doctors in the San Francisco Bay Area have begun a campaign promoting Pap tests for gay men in the hopes that it will reduce rising rates of anal cancer.

U.S. cases of anal cancer have risen 37 percent in the last 10 years, compared to a 1-percent increase in overall cancer cases.

In 2006, there were about 4,660 cases, of anal cancer with 660 deaths, accounting for less than 1 percent of all cancer cases, according to the American Cancer Society.

Studies have shown rates of anal cancer as high as 35 cases for every 100,000 people among gay men - a figure comparable to those of cervical cancer in women prior to introducing Pap tests as a screening tool 60 years ago. Since then, rates of cervical cancer have fallen 70 percent.

While more women than men get anal cancer every year, the rates of gay men and people who are HIV-positive or have other immune-suppressive conditions are disproportionately high.

Like cervical cancer, the human papilloma virus, or HPV, a sexually transmitted disease that will infect the vast majority of adults in their lifetime causes anal cancer.

Decades in Making, Gay-Rights Law Passes

Salem, OR - After thirty-four years of working towards victory, gay and lesbian Oregonians finally reached it when the Legislature passed a law protecting them from discrimination in housing, work and public places.

"We just get better and better as a state the more inclusive we are," said Sen. Ginny Burdick, D-Portland, who carried the bill to the Senate floor where it was quickly approved 19-7.

Oregon is the 18th state to adopt a law protecting gays and lesbians from discrimination. Those states account for nearly half of the nation's population.

Such laws have not triggered an explosion of litigation, but do serve to put employers, landlords and business operators on notice that discrimination is against the law.

Transgender Student Runs for Prom King

Fresno, CA - School officials at the Fresno High School added 17yr old Cinthia Covarrubias's name to the ballot for prom king - reversing a previous district policy that allowed only boys to run for king and girls for prom queen.

Gay youth advocates called it a landmark victory for campus gender expression and believe it's the first time in the US that an openly transgender student has run for prom royalty.

Covarrubias, who sometimes identifies herself as Tony, considers herself transgender, an umbrella term that covers all people whose outward appearance and internal identity don't match their gender at birth.

"My freshman year I just started feeling different," she said. "When I decided to change to be like this, all of a sudden I said, 'Wow, I feel OK. I feel like finally I'm being me.'"

She has no current plans, however, to permanently alter her gender through

hormones or surgery.

After classmates nominated Covarrubias for prom king, administrators quickly said she could only run for queen. A teacher with the school's Gay-Straight Alliance complained to the board, and officials changed their minds.

Adding her name to the ballot was in compliance with a state law protecting students' ability to express their gender identity on campus.

"We always want to do the right thing by our students," vice principal Sheila Uriarte said. "This is why we came to this decision."

The law, passed in 2000, requires schools to protect students from discrimination on the basis of their sexuality, gender, or gender expression.

WA Signs Domestic Partner Bill

Olympia, Wash. - Washington Gov. Chris Gregoire has signed into law a measure to create domestic partnerships, providing enhanced rights for same-sex couples, including hospital visitation rights, the ability to authorize autopsies and organ donations and inheritance rights when there is no will.

"It offers the hope that one day, all lesbian and gay families will be treated equal under the law," said state Sen. Ed Murray, who is one of five openly gay lawmakers in the Legislature. Unmarried, heterosexual senior couples will be eligible to register if one partner is at least 62.

Lawmakers said that provision, similar to one in California law, was included to help seniors who are at risk of losing pension rights and Social Security benefits if they remarry.

"This is a very proud moment for me as governor, to make sure the rights of all of our citizens are equal," said Gregoire, while receiving a standing ovation.

"This simply allows our seniors and our same sex partners to rely on each other and to care for each other when they are faced with life and death situations. These are the rights of all Washingtonians." Said Gregoire

The new law will take effect in July. It comes nearly a year after the state Supreme Court upheld Washington's ban on same-sex marriage in a 5-4 decision.

Gender-Based Violence Claims Another Life

San Francisco - Ruby Rodriguez, a 27-year-old Latina transgender woman was found strangled with knife-like cuts on her arms in the early morning hours of March 16 in San Francisco's Mission District.

"Ruby's murder is not an exception. Gender non-conforming young people are dying at a rate of about one every three months," said Riki Wilchins, Executive Director of the Gender Public Advocacy Coalition (GenderPAC).

Ruby's body was found in the same area where another transgender woman was beaten and raped last summer.

Since 1995, over 50 young people aged 30 and under have been violently murdered by assailants who targeted them because they did not fit stereotypes of masculinity or femininity.

In December 2006, GenderPAC released the groundbreaking human rights report "50 Under 30: Masculinity and the War on America's Youth" to document this tide of fatal violence and the key demographics of its victims and their assailants.

54% of the deaths documented in the report remain unsolved, as compared with 31% for all homicides nationally.

The annual FBI Hate Crimes Statistics Report documents assaults motivated by race, religion, sexual orientation, ethnicity, or disability. According to the "50 Under 30" report, if murders based on the victim's gender identity or expression were included in the data, they would outweigh every other category except race.

the Cat♥Doctor, D.O.

Compassionate Health Care Just for Cats

Quality Feline Medicine & Surgery

Learn about Care, feeding behavior & more!

• Dentistry • Boarding • Nutritional Consultant
• Behavior Consultation • Gifts • Supplies

Kathryn Christensen DVM

Nikki Seibert DVM

414.272.CATS (2287)

236 N Water Street Mil. WI 53202

www.catdoctor98.com

International



Happenings

HIV+ immigrants not Welcome Down Under

Australia – While being interviewed on radio, Prime Minister John Howard of Australia was asked if people with HIV would be welcomed to enter the country as migrants or refugees. After stating that he needed to take “more counsel” on the issue, he added, “my initial reaction is no.” However, he said there may be “humanitarian considerations” in certain cases.

Howard was asked about the issue during a visit to Melbourne, the capital of Victoria state, where the state health minister reported that 70 of the 334 new HIV infection cases reported in Victoria in 2006 were among immigrants who had arrived in the country with the virus.

“I think we should have the most stringent possible conditions in relation to that nationwide, and I know the health minister is concerned about that and is examining ways of tightening things up,” Howard said.

Australia has long had restrictions on people who try to immigrate who have health problems that could threaten to spread disease or impose an additional burden on the public health system.

The National Center for HIV Epidemiology and Clinical Research said in an October 2006 report that since it was first detected, 25,703 infections had been reported in Australia, of which 9,827 people developed full-blown AIDS and 6,621 had died.

WorldPride route in Jerusalem bombed

Jerusalem - A bomb in Jerusalem exploded April 20, near the route of this year’s gay pride parade route, injuring a worker near the West Bank separation fence after his tractor ran over the explosive. Police suspect that ultra-Orthodox Jews may have planted a bomb near the route out of protest.

Noa Sattah, executive director of advocacy group Jerusalem Open House, said the attack was just one example of violence against LGBT people internationally.

“Religious bigotry will never deter us from our struggle for freedom of expression and full and equal civil rights,” said Sattah. “We urge the Jerusalem police to find the perpetrators of this despicable action and bring them to justice.”

Flyers protesting the parade were found at the site of the blast. They condemn last year’s WorldPride march in Jerusalem and advocate against holding future marches in the capital.

Kenneth Cole
COOL Men's Shoes
and Accessories

MENS SHOE SHOP
DOWNTOWN SINCE 1939
631 N. PLANKINTON AVENUE
Shops of Grand Avenue
MILWAUKEE (414) 271-5175

www.VansShoeShop.com

Bacco Bucci

Dr. Martins

LIVE MUSIC IN MAY

5/4	TOM VOLLMAN
5/5	GABRIELLE REED
5/9	CHRIS KOZA
5/11	HAPPY HOUR
5/12	JAYME DAWICKI
5/16	BRANDEN KOLARIK
5/18	CAMILLE BLOOM
5/19	LIZ SNAVELY
5/23	COVENTRY JONES
5/25	MIKE KEANE
5/26	DAVE MEHLING
5/30	MILW. SONGWRITERS

OPEN @ 6AM

Wi Fi

ART★BAR

RIVERWEST

722 E Burleigh St, Milwaukee | 372-7880 | www.artbar-riverwest.com

Forge Forward and Beyond

Making history and talking about history were both on the agenda when nearly 500 people from around the country converged in Milwaukee March 29 – April 1, 2007, for the FORGE Forward 2007 Conference and Intensives.

The event, sponsored by FORGE, a 13-year-old, Milwaukee-based transgender organization, made history by being Wisconsin’s largest-ever gathering of trans and SOFFA (Significant Others, Friends, Family, and Allies) and the first national conference focused on female-to-male (FTM) and SOFFA issues to be held anywhere other than the two U.S. coasts.

Although some people already knew that FORGE was on the cutting-edge of the national transgender movement, others were surprised to learn Milwaukee was hosting a conference that until now has only been held in San Francisco, Seattle, Los Angeles, Boston, and Washington, D.C. To help remind people of the Midwest’s role as the nurturer of key transgender leaders, the conference included a keynote speech by Susan Stryker, a nationally-known LGBT historian, about Milwaukee native Lou Sullivan. With Lou Sullivan’s brother and a childhood friend in the audience, Stryker presented a slide show and talk about Sullivan’s ground-breaking work securing access to hormones and surgery for gay-identified FTMs and founding what became FTM International.

Other keynote speakers with Midwest ties included Jay Sennett (an original FORGE member, now a cartoonist and the founder of a publishing house in Michigan), Hanne Blank (a well-published author and theorist from Ohio), and Ben Singer (who began exploring his gender issues while attending college in Wisconsin).

Both geographically and politically, the Conference also drew from far afield. Vermont poet Eli Clare wowed both long-time and brand-new disability rights activists with an eloquent speech on how the trans and disability movements can learn from each other. Learning from multiple identities was also the theme of California resident Willy Wilkinson, who boldly challenged Conferees to examine how oppressions overlap and change when they are mixed with one another. Los Angeles-based Dean Spade not only keynoted, but also helped lead a raved-about Intensive on organizing across race, gender, class, and other “dividing lines.” Entertainment (and, sometimes, still more thought-provoking commentary) was provided by Massachusetts performance artist S. Bear Bergmann, New York City performance

artist Imani Henry, Arizona musicians Michael Woodward and Sheila Quinn, and Seattle’s acoustic duo, Coyote Grace.

In addition to the plenary speakers and entertainers, the ambitious Conference line-up included nine full-day “Intensives,” a film festival, authors’ readings, a vendor hall, a dance, and nearly 90 planned and propose-it-on-the-spot workshops and caucuses.

According to co-chairs Michael Munson and Loree Cook-Daniels, they purposefully highlighted controversial people and ideas – including a workshop on FTMs who “transition back” to live as females, and another on eating disorders within the trans community. “We

were thrilled conferees reported feeling included, empowered, and cared for,” said Cook-Daniels.

“I am taking home from the [Conference] a greater sense of my connection to the broader trans community and the power of who I am in my daily life,” one Conference-goer wrote. Other evaluation form raves included, “Extremely inclusive – more so than any conference I have been to,” “Fantastic speakers,” “Overall, one of the best community presented and produced conferences that I’ve ever attended.”

FORGE made a special effort to invite participation by local LGBT and mainstream groups. Five organizations – SAGE-Milwaukee (which focuses on older LGBTs), Project Q (focusing on LGBT youth), PFLAG-Milwaukee (Parents, Families, and Friends of Lesbians and Gays), SHEBA (a Milwaukee-based male-to-female group), and the 16th Street Sixteenth Street Community Health Center HIV Dept

I have heard from more than a dozen different people that the conference was the best they have ever attended – and these are not easy to please people!

– sponsored receptions on Saturday. The purpose of these partnerships was to strengthen awareness of how related trans and gender issues are to other work and issues with which community members are grappling

To join the FORGE email announcement list to track other events, email info@forge-forward.org. To read more about the Conference and/or order a specially-designed Conference T-shirt or 96-page program book, see www.forge-forward.org/conference



Sail into Summer-Even if You Don't Own a Boat

Special to QLife: Nathania Wallace

It's hard to believe that the sailing season in Milwaukee kicked-off April 28, when there was snow on the ground just a few weeks ago. But remind yourself that we had a few days in the 80's in March. No matter what time of year you come aboard in Milwaukee, don't forget to bring water, sunglasses, sunscreen - and a jacket.

If you are a seasoned sailor or would like to give the sport a try for the first time, there is no better place to be than Milwaukee's lakefront. Two yacht clubs, the Sailing Club at UW-Milwaukee and the Milwaukee Community Sailing Center are waiting to float you away to your particular definition of paradise. The spectacular view of the winged Calatrava addition to the Milwaukee Art Museum, the new Pier Wisconsin/Discovery World Museum and the Milwaukee downtown skyline is the trifecta of offshore sightseeing.

For those of us who don't own a boat, the upscale Milwaukee Yacht Club (MYC), the casual South Shore Yacht Club (SSYC), The Sailing Club at UWM (SCUWM) and Milwaukee Community Sailing Center (MCSC) offer programs that allow you to take the helm, crew on a boat or just ride the rail as a passenger.

MCSC offers one of the best deals going. For the annual membership dues of \$290/single or \$450/couple, you get virtually unlimited access to their fleet of boats, and reduced fees for sailing lessons.

The Milwaukee Bay Women's Sailing Organization (MBWSO) members race their boats out of both yacht clubs and

the MCSC and are always on the lookout for women crewmembers. The group also sponsors instructional seminars and mini clinics geared toward skill improvement. Information about the group's activities and how to join can be found at www.mbwo.org. A basic membership is only \$10 per year.

For those who like bigger boats and the chance to sail like a pirate, Discovery World at Pier Wisconsin is home to Wisconsin's flagship the tall ship S/V Denis Sullivan, a recreation of a three-masted 19th century Great Lakes cargo schooner. The primary purpose of the ship is to provide freshwater education throughout the Great Lakes region and marine education in the Bahamas, but she also offers pleasure day sails when in port. The 2.5 hour sailing adventures allow willing participants and scallywags the fun of raising and striking the sails. Adults \$50, children \$25. Volunteer crew positions are available. The Sullivan's homecoming is June 2, 2007, and marks the official start of the summer season in the State of Wisconsin.

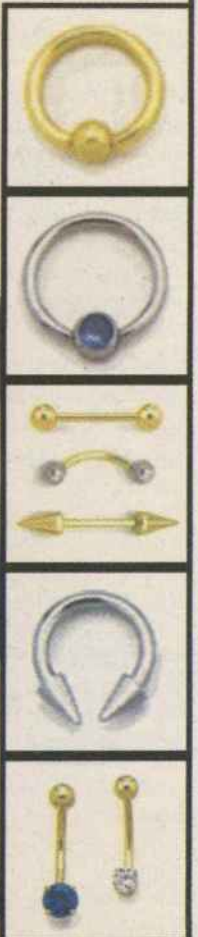
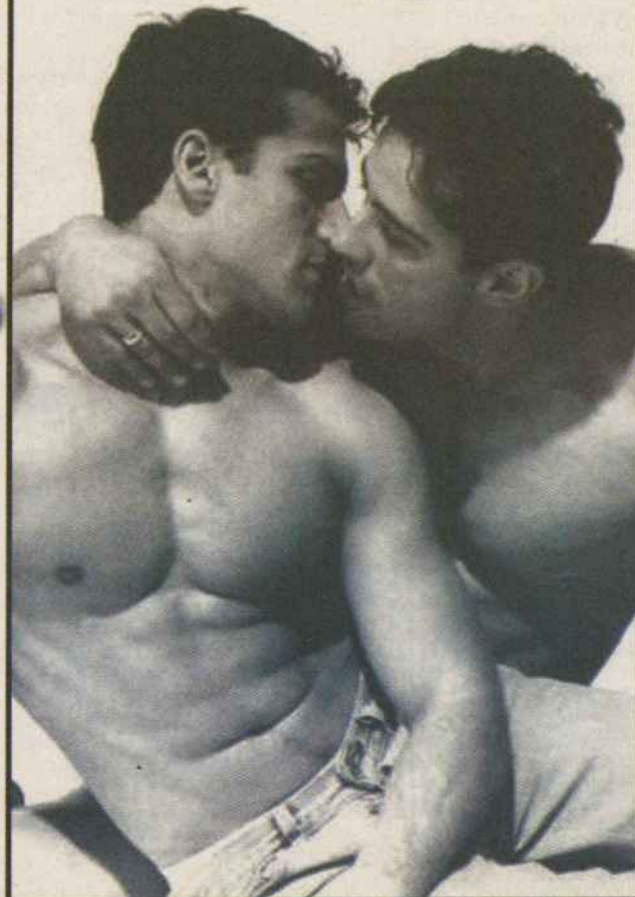
Another bonus is that you do not need to be a member of MYC or SSYC to participate in their sailing programs, and non-student community members are also welcome to join SCUWM. So think Lake Michigan this year and take advantage of one of the premier sport and entertainment venues in Milwaukee. Sail the big pond and view the Milwaukee skyline from a different direction - the East.

	MCSC	MYC	SSYC	SCUWM	S/V DENIS SULLIVAN
Learn to Sail Lessons	♦	♦	♦	♦	
Skill Improvement	♦			♦	
Youth Sailing Lessons	♦	♦	♦		
Practice Time on boats	♦	♦		♦	
Racing	♦	♦	♦	♦	
Crew Recruitment	♦	♦	♦		♦
Sailboat Rides	♦				♦
Group Charters	♦				♦
Season Opens	April 28, 2007	May 19, 2007		April 28, 2007	June 2, 2007
Website	sailingcenter.org	milwaukeeyc.com	ssyc.org	uwm.edu/Student Org/sailclub	pierwisconsin.org
Phone	414-277-9094	414-271-4455	414-481-2331	414-736-2395	414-765-8640

Mother's Day Is Coming!

Mommy Dearest Always Says, "No Wire Hangers!"
...But A Nipple Ring, That's OK!

www.c3-designs.com



C3 Designs (414) 764-3892

8628 A S. Marketplace, Oak Creek, WI 53154
located at Puget and Hwy 32 in the Marketplace Mall

Pay for the art, not for the location.



Historic Downtown Waukesha's Fine Art Gallery.
Home to more than 20 artists.

River's End
GALLERY

262-896-8875

www.riversendgallery.com

380 W. Main Street, Waukesha, WI 53186

Hours: Wed. & Thurs. - Noon - 6 p.m. Fri. - Noon - 7:30 p.m.
Sat. - 10 a.m. - 6 p.m. Sun. - Noon - 6 p.m.

Do You Love Antiques?

Best selection for collectors and decorators in Milwaukee's trendy warehouse district!

- 18th thru 20th century • 15,000 sq ft., packed!
- Dozens of southeastern Wisconsin's top antique dealers and decorators
- From the elegant to the funky • Small items, big items in all price ranges
- Milwaukee's best selection of designer vintage clothing!

Customer oriented!

- Local, national and international delivery available
- lay away • easy, convenient parking • gift certificates



175 S Water St • Milwaukee, WI
OPEN 11-6 daily, noon to 5 Sunday
Phone: 414-278-9999

Print out a map from your door to ours:
www.RiverviewAntiqueMarket.com

There's Hope

My hunch is that today's families, including chosen families, are the vanguard in the revolutionary front for a more tolerant world. I think biracial children, those with parents of different sexual orientations, those with parents from different countries or classes, will lead the way. After all, their entire lives are based on reconciling the two (or more) conflicting values of their parents or caregivers. Those who do not go nuts in the process undoubtedly make some important discoveries about empathy and acceptance.

My credentials to speak on this are the following: I have two children with mixed Latino and white blood. Their father is an avowed het, and I've been attracted to girls/women since I was seven years old.

My daughter Iris is almost 23 and my son Rafi is 21. When they were little, I was focused on surviving as a single mother and keeping them safe, fed, doing homework, etc. I came out (for the second time in my

life) when Iris was seven and Rafi, five. My competing interests were reflected in my car's three bumper stickers: a rainbow flag, "Wild Women Don't Get the Blues" and "My child is an honor student at Howsman Elementary."

Nowadays lots of rainbow families are springing up, thanks to better avenues for adoption, lesbian mothers getting custody of children in divorces and more male couples feeling the urge to parent. But in the early 90's there weren't that many of us. Lately I've started to ask my children for their takes on growing up in this environment.

My son seems philosophical about his formative years with a lesbian mother and female sibling. His first comment was, "I just remember lots and lots of estrogen." (I'm assuming he's referring to my PMS and his sister's menstrual debut as particularly difficult to bear.)

I asked him if he ever had trouble in school or when 'outing' himself to friends.

"For me and the kids I hung around with," he said, "the gay thing was not an issue. We talked more about how parents treated you, if they didn't pay any attention to you, if they were too strict." For him the main issues "were related to the fact that you were my mom."

Iris was the kid in the know in third grade. When the girls tittered about what 'gay' meant, she had a somewhat accurate answer for them (while retaining anonymity). Later she threw all caution to the winds to become a founding member of the Gay-Straight Alliance at Riverside High School. Overnight I became a 'cool mom' to her friends. My lesbian circles have taught her to be strong and express herself fully as a woman.

One part of our queer family, however, is still suffering greatly: LGBTQ youth in foster care. Some of them are rejected by family; others come from families who themselves struggle to cope with life. Sometimes their foster families abandon them for their sexual orientation. Jane Ottow, a local lesbian therapist, has begun a courageous, innovative program to pair these kids with LGBT



LESBIAN VIEW

Lesley Salas is a Cuban-American lesbian mother of two. She currently enjoys life in Riverwest with her blended family: her partner, their lovable dog and disgruntled cat

identified or queer-friendly adults.

If anything, my experience with my children has taught me that I have raised some resilient and tolerant young adults. I believe that if someone as screwy as me can be a role model, there's hope for any of us queers. Let's celebrate ourselves as parents or potential parents this month. Contact Jane Ottow at Children's Service Society, (414) 453-1400, to see about becoming a foster parent to a LGBTQ youth or to donate time or money to this very worthy cause.

Foster Parents Needed

As an ALLY or identified LGBT community member, have you ever thought about becoming a foster parent? Are you sincerely committed to the future of our youth?

Children's Service Society of WI is actively recruiting for appropriate foster providers within the LGBT/ALLY community. We need stable and secure home for ALL of our community's children,

including LGBTQ youth in out-of-home care. The age range of children who need care include birth through eighteen.

Consider this statement about LGBTQ homeless youth from Carl Siciliano, Executive Director of the Ali Forney Center in New York City, "It is tragic that so many youth are forced to experience homelessness as a result of their honesty. On behalf of the thousands of LGBTQ youth on the streets of our nation,

I call on (LGBT) community members and leaders to make the welfare of our youngest members a priority. We might not be their (bio)parents, but these are our kids. We must do more to protect them."

To learn about becoming a foster parent, attend one of the informational meetings:

May 10, Thursday, 6:30-7:30PM

**Broad Vocabulary
2241 S. Kinnickinnic Ave.,
Bay View (414-744-8384)**

May 24, Thursday, 6:30-7:30PM

Milwaukee LGBT Community Center

**315 W. Court Street,
Milwaukee (414-271-2656)**

**For more information, call
Jane Ottow at CSSW (414-453-1400).**



Bill A. Lison

Office: 414.476-7100

Direct: 414.476-9070,

Ext. 229

E-mail wlison@shorewest.com
www.wlison.shorewest.com

Elmbrook/Wauwatosa Office
11622 West North Avenue
Wauwatosa, WI 53226



MLS # 880792 2630 N. Grant Blvd Milwaukee, WI 53210 PIN # 17680

Exceptional Milwaukee brick bungalow Tudor/Provincial 5BR/3BA home in historic. Sherman Park district on Grant Blvd. This home features beautiful natural woodwork, crown moldings, HWFs, cove ceilings, French doors, beveled/lead glass, built-in china cabinets, natural fireplace, lower level rec room & half bath, attached garage plus additional parking. 1-year old furnace and fenced back yard **\$239,900.**

Call Bill today for a private showing (414) 476-9070 x229.

MLS # 889941 418 N 3rd St Unit 110, Milwaukee, WI 53203 PIN # 79520

Bright, sun filled open concept loft with updates. Cream city brick walls, beautiful gas fireplace, exposed beam ceilings and hardwood floors. Large kitchen with stainless steel appliances, maple cabinets and breakfast bar. Luxurious full bath. Walk-in closet in master bedroom. Loads of custom/artistic features. Exercise facility and party room, roof top terrace with amazing city views. One car off street parking included. **\$219,900.**

Call Bill today for a private showing (414) 476-9070 x229.



MLS # 894876 4916 W Colonial Ct 4916, Greenfield, WI 53220 PIN # 65240

Milwaukee St. Joe's area duplex! Invest or live-in. Well maintained, updated two/two BR, one bath each duplex offers newer roof on both home and garage. Updated bathrooms, built-in buffets, built-in bookcases, artificial fireplaces, leaded glass, natural woodwork, hwf, newer carpeting and kitchen flooring. Both baths have newer ceramic tile, glass block windows and light fixtures. Loads of Old World charm in both units. Appliances included and two newer window air conditioner units as well. Large 2 car detached garage and nice yard **\$129,900.**

Call Bill today for a private showing (414) 476-9070 x229.

MLS # 892516 2829 N 55th St 2831, Milwaukee, WI 53210 PIN # 74960

Updated two bedroom, two bath townhouse condo. Newer appliances. Upgraded kitchen with dinette has newer cabinets, flooring and counter tops. New carpet 3/07 on first floor. Large bay window in living room, open staircase and first floor bedroom. Spacious master bedroom upstairs with two walk-in closets, full bath and a balcony. Lower level rec room, one car garage. Close to shopping and schools. In-unit laundry and private outside entrance **\$161,900.** Call Bill today for a private showing (414) 476-9070 x229.





POLITICS

Patrick Flaherty (pflaherty@queerlifeneews.com) is a longtime activist for LGBT equality. He works at the Milwaukee LGBT Community Center and lives with his partner in Milwaukee's Riverwest.

"If there is no struggle there is no progress. Those who profess to favor freedom and yet depreciate agitation, are men who want crops without plowing up the ground, they want rain without thunder and lightning."

— Frederick Douglas

In the bitter aftermath of the amendment banning marriage and civil unions, some in our community want to place the blame on same-sex couples who dared to demand marriage. They blame the backlash that led to more than 25 constitutional marriage bans on the legislative and legal fights for marriage equality in places like Hawaii and Massachusetts. But the blame for this ugliness should be laid at the feet of the radical Christian Right that provided the raw ideological ferment for the referenda, and the Republican strategists who manufactured the hate into well-financed, well-timed get-out-the-vote operations.

But a backlash to the backlash seems

Backlash to a Backlash

to be developing. Foot soldiers like Julaine Appling of the Wisconsin Family Council have shown that they won't stop with gays. They're out to make it harder for abused women to leave bad marriages, or even stop them from breastfeeding in public. The generals aren't faring well either. Republican strategist and architect of the 2004 marriage bans, Karl Rove, has shown that he's better at staying un-indicted than at winning elections. And Wisconsin amendment mastermind John Gard is without a job, voted out with other marriage ban crusaders supporting an election-year gimmick that was supposed to help the Republicans take the Governor's office and keep both houses. Instead, Senate Democrats, who voted unanimously against the ban, swept into power; Doyle was re-elected; and the Assembly Republican majority shriveled as opposition to the amendment increased progressive turnout, especially on college campuses.

The struggles of LGBT people against constitutional amendments (and for marriage) have indeed turned the ground, and new progress is sprouting. In Wisconsin, Monona and La Crosse County have adopted domestic partner benefits. Breakthroughs are expected elsewhere around Wisconsin. Nationally, in the years that Wisconsin was fighting its ban, civil unions passed in Connecticut and New Jersey, and is getting close in New Hampshire. Washington passed a comprehensive domestic partnership law

last month and Oregon is about to follow. New York's new Democratic Governor, Elliot Spitzer, is introducing a proposal to open marriage, and Massachusetts's Governor, Deval Patrick, may end the 1913 anti-miscegenation law used to block out of state couples from getting wed in the only state with marriage equality.

But some of the fight may be leaving activists even before these efforts reach fruition. New Hampshire's civil unions measure has stalled, and the New York Governor looks like he's just going through the motions by saying his own marriage bill is going nowhere. Legislative leaders in Wisconsin have stripped domestic partner benefits from the budget. After years of being an embarrassing political cold sore, some LGBT political organizations are enjoying new respect from Democratic leaders impressed by the community's ability to mount multi-million dollar campaigns or boost Democratic vote totals. LGBT leaders may be afraid of losing their new-found access for fear their powerful friends would exile them again if pressed too hard on producing concrete legislative results. They may agree too swiftly to "wait until we take the State House," or "we have a Democrat in the Whitehouse."

Letting our friends in government off the hook now would be a mistake akin to the thirty-year sick joke Republican strategists played on working class and rural voters. As Thomas Frank described in "What's

the Matter with Kansas," Republicans lured "Reagan Democrats" into supporting candidates that vote against their economic interest by taking socially conservative positions on abortion, gays, and guns. Once in office, these candidates pursued economic policies that hurt these voters, yet rarely delivered on social issues, which kept their base permanently aggrieved and inflamed ... and voting Republican — at least until the Iraq war and diminishing economic security woke many from their stupor.

Which brings me back to Frederick Douglas: "Power concedes nothing without a demand. It never did and it never will." That goes whether the leader has a D or an R after their name.

Open-minded About Open Office

By Anthony Dean

If you're looking for an alternative to spending several hundred dollars for a copy of Microsoft Office, or want something a bit more robust than the copy of Microsoft Works included with your new PC, one increasingly popular option is to download and install OpenOffice.org, available at www.openoffice.org. OpenOffice.org (also referred to as "OpenOffice") is a robust suite of office software and includes a word processor (named Writer), a spreadsheet program (named Calc), and a slideshow creation and presentation program (named Impress), along with database and drawing programs. Many of the features and menus of these programs are similar to those found in Word, Excel and PowerPoint, with Writer including standard word processor features such as a spellchecker, thesaurus, support for clip art, headers, footnotes, tables, and the ability to track changes made to a document. Similar standard features can be found in Calc and Impress. Additionally, OpenOffice is also capable of opening and saving files in Word and Excel formats, as well as in its own native format; this allows you to send and receive files from the rest of the Microsoft Office-using world, as well as provide access to your old files. On top of all of this comes what may be one of the biggest advantages to OpenOffice - being completely free to download and use.

Some websites offer assistance in the use of OpenOffice, while other sites offer user-

submitted templates and clip art that can be downloaded for free; one example of the latter is OO Extras (ooextras.sourceforge.net). OpenOffice's website also offers a list of third-party support websites (support.openoffice.org/index.html). However, if more robust support is desired, a commercial suite named StarOffice (www.sun.com/staroffice), the program which OpenOffice was originally spun off from, is available for purchase. StarOffice offers the same features as OpenOffice, plus includes extra fonts, clip art, and technical support. StarOffice costs \$70 to download from its website, or \$100 for a boxed retail store version.

While OpenOffice is primarily aimed at Windows and Linux users, a version for Mac OS X named NeoOffice is also available for free. NeoOffice information and downloads can be found at www.neooffice.org.

To give a real-world usage example, I use OpenOffice as my primary word processor at home, particularly for writing articles, letters, resumes, and other similar documents. Others might find it useful for writing school papers or memos, creating simple slideshows, and so forth. Given the increasing expense of computer software, those in the market for a new office suite or an upgrade of older software might find it worthwhile to consider the advantages of OpenOffice. Seeing as OpenOffice is free, you'll have nothing to lose in trying it out.

affordable graphic design | specializing in non-profits | expert DTP software instruction



www.mmkdesign.com
414.688.9635

2821 N 4th Street #532
Milwaukee, WI 53212

flowers, chocolate,
candy, cards, hugs, love,
gifts, kisses, brunch,
phonecalls, laughs, letters,
more hugs, visits, more
love,
....definitely more love.

Happy
Mothers Day
from QLife





QUEER LIFE

2266 N. Prospect Ave. Suite 200
Milwaukee, WI 53202
Phone: (414) 383-8200
Fax: (414) 383-5066
www.queerlifeneews.com

Queer Life is the information voice of the LGBT community. As a monthly publication and the only state-wide gay newspaper headquartered in Milwaukee, each issue celebrates Wisconsin's diverse population with boldness and class. From what's happening locally and nationally to features on everyday life, QLife has got it all.

EDITOR

Kate Sherry

SALES DIRECTOR

Bob Harvey

STAFF WRITERS

Raymond Bradford, Jennifer Curtis, Anthony Dean, Patrick Flaherty, Harry Hanson, Gary Hollander, Michael Munson, Cyndie Ody-Weis, Lesley Salas, Todd Schuster, Don Schwamb, Michael Sweeney, Rev. Andrew Warner, Christopher Wilde

SPECIAL TO Q LIFE

Alison Glendale
Nathania Wallace

PRODUCTION & DESIGN

Harvey Graphics

WEBMASTER

Jeff Norton

CIRCULATION

QLife prints 10,000 copies a month. It is a free, monthly newspaper, distributed throughout Milwaukee, and the state. You can find it at coffee shops, bars, libraries, stores, and a variety of gay friendly locales.

CONTACT Q LIFE:

Queer Life's offices are open to the public. Regular business hours are 10 a.m. to 4 p.m., Monday - Friday, except for holidays.

ADVERTISE IN Q LIFE

Studies prove that LGBT consumers have deeper trust for brands and products that target gay consumers. Reach this powerful segment of the population in the pages of Queer Life and gain loyal customers, a significant percentage of the general population. As Wisconsin's premier LGBT News leader, QLife serves an important buying audience ready to embrace companies friendly to the gay community.

QLife retains the right to reject any advertising material submitted, as well as the right to print the word "advertisement" on any ad. Advertisers will be billed according to the current rate card, at the frequency level earned. Advertiser and/or ad agency will hold Queer Life harmless from any loss or expenses arising from any disputes or legal claims related to advertising in this publication.

Letters to the Editor:

QLife welcomes letters to the editor and guest editorials. Letters must be signed and include author's name and phone number. Author's name will be withheld upon request. Send to editor@queerlifeneews.com. Published letters do not necessarily reflect the opinion of the staff or its advertisers.

© 2007 Queer Life. All rights reserved. Reprint notice: For reprint information or permission, contact editor@queerlifeneews.com

Don't Mess With Our Moms

Kate Sherry

At a recent Community Breakfast held at the LGBT Center, one topic was "protestors" & how to handle them- both at the Pride Parade and at PrideFest where they enjoy ridiculing and antagonizing us from the sidelines. Even members of PFLAG were apparently given the finger last year from parade goers who mistook them as protestors. I'll admit, I did chuckle a bit at the image of birds flipping in every direction, and at ANYONE holding up a sign. But, really, it isn't funny. Those Moms's and Dad's and Allies are out there on our side, and we shouldn't have to be pushed to such a point of frustration where we confuse the angels with the devils.

We shouldn't have to so purposefully diStracted from the love and pride and happiness that is truly our own to celebrate. We just really shouldn't have to deal with them at all.

But, this is the USA, and they have every right to protest, and every right to their opinions, no matter how twisted.

We all know these people are sick. They live for this type of activity. However, we were reminded at this breakfast meeting that the best thing we as a community could do when it comes to protestors was to ignore them. Ignore the horrible, hateful words spewing out of their puffed-up bloated heads, and just go on with our day. This will be our day of Pride, not theirs.

Last year, I stood out in front of the PrideFest gates watching a young girl stand there with here oh so clever sign of sin, and thinking, "this is just

a child." She must live in a hell all her own, obviously being brainwashed into a world of bitterness. Right next to her crowd, was the proud mom from PFLAG announcing how blessed she was to have a gay son.

Mama Q told us all at the meeting a moving story about how some parents dropping off their children to PrideFest saw the angry protestors, and didn't want to subject their children to such hate. But, when they saw the proud parents out there supporting us ALL, they pulled that car over, and told their kids to have a good time.

At this meeting, it was acknowledged how all LGBT people should support the efforts of PFLAG and other allies at both the Pride Parade and PrideFest. They are out there standing up for us, so we can have a good time.

They may be blessed to be the parents of gay children, but it is we who are blessed by their presence, and their strong hearts.

The Pride Parade and PrideFest committees work tirelessly to present a good time for the LGBT community, and they can always use a bit more help. Volunteer to work that weekend for a few hours. Check out their websites at <http://www.prideparademke.com> and www.pridefest.com for more info.

Gays and Values: Are They Mutually Exclusive?

Special Editorial by Beatrice Green

A friend once asked me how I could talk about gay culture when there is no gay food.



EDITORIAL

"How can there be a culture without a food, she asked?" I weakly proposed that many lesbians are vegans. A more difficult problem lies with a question that is never asked: "How can there be a culture without values?" or "Gay Culture" you say, if you have a culture, what are your cultural values?" It seems almost an oxymoron to speak of gay values.

A teenager growing up in a supportive household now asks his mother, must I choose to be either a gay man or a good man? As a lesbian must I approve of sadomasochism and paedophilia [man-boy love]? Are all of us really at risk for HIV? Do we want promiscuity and recreational drug use to be considered normal behavior for our community? Does coming out as a gay man or a lesbian free the individual from the social contract that holds for all others?

When we wonder why heterosexuals hate us, as Larry Kramer recently wrote in a letter to the LA Times, or why homophobia persists despite our increased visibility in political and social life and in the entertainment media. Do we consider that this heterosexual homophobia is sustained by the apparent absence of tangible gay and lesbian values? When a gay apologist complains that "they hate us simply for being what we are," perhaps we should ask what it is that they think we are and honestly ask if they are right? Then, is this what we want to be? Are we the community we want to be and the kind of community in which we want to live? Perhaps it's time that we have these conversations.

QLife Quickies

Goofy and Pluto can now Wed!

Los Angeles - The Walt Disney Co. has said it will now include ceremonies for gay couples at its parks and cruise line after being contacted by a gay couple that wanted to participate in the program.

Disney had previously limited access to the program to couples with a valid marriage license.

"We believe this change is consistent with Disney's long-standing policy of welcoming every guest in an inclusive environment," Disney Parks and Resorts spokesman Donn Walker said. "We want everyone who comes to celebrate a special occasion at Disney to feel welcome and respected."

Ceremonies are offered at Disneyland in California and at the Walt Disney World Resort in Florida, as well as on Disney's cruise ships. The Fairy Tale Wedding service offers packages starting at \$8,000 and running to \$45,000 or more, and include flowers, dining, music and other extras. Couples can even exchange vows in front of Cinderella's castle, with Mickey and Minnie Mouse on the guest list.

Gay Philly Flagged

Philadelphia - In a historic moment for the gay, lesbian, bisexual and transgender (GLBT) community of Philadelphia, and after two years of planning, 36 new street signs were permanently affixed with the rainbow flag to designate the "Gayborhood."

Philadelphia's "Gayborhood" is a place where GLBT visitors and regional residents can patronize a concentration of gay-friendly businesses, bars, nightclubs, coffee shops and restaurants.

The dedication ceremony included a performance from the Philadelphia Gay Men's Chorus singing "Somewhere Over the Rainbow" while confetti cannons shot rainbow colors into the air.

The effort to replace existing street signs with the new gay-friendly ones was championed by the members of the Philadelphia Gay Tourism Caucus with support from the City of Philadelphia, Washington Square Civic Association and Philadelphia City Councilman Frank DiCicco.

For more information on gay-friendly Philadelphia, visit <http://gophila.com/gay>.

Mary's Baby on Mother's Day

Mary's baby is causing a lot of commotion among Christians. I don't mean Jesus, but rather the soon expected child of Mary Cheney.

Mary Cheney is of course the lesbian daughter of America's famously conservative Vice President. She and her partner are bringing an awareness of gay families into the heart of the conservative movement.

Dick Cheney, like one would expect of a grandfather, has made positive comments about his daughter and soon-to-be grandchild. Perhaps surprisingly, George Bush has likewise said positive things about Mary.

It is tempting to see this as a familiar kind of progress: once our issues have a familiar face, parents and friends can not help but come around. Yet there is something oddly missing in Cheney's and Bush's public expressions of support: Mary's partner Heather Poe. It is as if they can not bear to say her name.

This ought to be morally disturbing to us. Here Cheney and Bush look at a lesbian

Cheney and Bush look at a lesbian family and publicly deny the existence of half of it.

family and publicly deny the existence of half of it. While they can say nice things about Mary, how nice is it to ignore her partner? While their words seem like progress, even a softening of the heart, it is really just another example of the familiar ways conservatives fail to see our existence and our humanity. I would even say it is a symbol of what is troubling among religious conservatives: at their best they only see half our humanity.

Other conservatives do see Heather Poe and they don't like what they see. James Dobson and others have trotted out the canard that "a child needs a mother



RELIGION

The Rev. Andrew Warner (awarner@queerlifeneews.com) is a pastor at Plymouth Church UCC on Milwaukee's East Side. He lives with his partner, Jay, and their two children in Whitefish Bay. Your questions about LGBT spirituality are welcome.

and a father." Even normally liberal commentators like Leonard Pitts have echoed this conservative line.

I know my children wonder sometimes why they have two dads when other kids on our street have a mom and a dad. Days like Mother's Day can be confusing and painful. On that day and at other times they ask about their birth mothers. We share what we know, look at pictures, and talk about our love for them. We celebrate that day with some of the many women who are in their lives and who are very special to us, including their grandmothers. I know my children are curious about what it would be like to have a mother; but to name their questioning is not to say conservatives are right.

People like Dobson and Pitts are motivated by an underlying moral assumption. For social conservatives it would have been better for Mary Cheney to never have conceived than for her to raise a child in a lesbian family. It's shocking really: they are saying heterosexual parents are so important it would be better for a child never to have lived if they can't have that kind of family. It's an ugly and obscene thought that lurks behind the conviction about the need for a mother and a father. Conservatives are wrong: it is better for a child to live and to be loved.

This mother's day I'm going to thank the women in my life who see the full humanity of my family and who know that it is best of all when children live surrounded by love. Mother's day is a day for us to also say that the conservative moral vision is wrong in its partial vision of our humanity and its mistake view of children.

BWMT Milwaukee



Black & White Men Together At the Pump House, Saturday, May 19th - 7:00 PM to 9:30 PM

Beer, Soda & Hors d'oeuvres Provided

BWMT the Men's Social Group that supports All Interracial Dating and Relationships

If you are Interracially Inclined Come Meet B W M T

CREAM CITY FOUNDATION HISTORY: A PLACE CALLED HOME

In December 1987, the Cream City Foundation opened the Foundation Community Center, an office and conference facility for the lesbian, gay, bisexual and transgender community. This facility became the meeting place for many other organizations and events over the next 2 years. It was also the place that new mayor John Norquist met with LGBT community leaders in May 1989 to discuss how his new administration could be more LGBT-issues aware. The Foundation Community Center closed its doors in 1991 and the Cream City Foundation later moved into the building leased by the Milwaukee LGBT Community Center. The Cream City Foundation believes strongly in creating community space where LGBT people can come together for strength and support. Today, Cream City Foundation continues to support the growth of the Milwaukee LGBT Center by providing funding for its services and programming ranging from anti-violence education and training to services for LGBT youth.

25 YRS

CREAM CITY FOUNDATION

414.225.0244

www.creamcityfoundation.org
315 W. Court Street, Suite 201B
Milwaukee, Wisconsin 53212

"ABBA-SOLUTELY FABULOUS!"

LIZ SMITH

ONE WEEK ONLY!



BENNY ANDERSSON & BJÖRN ULVAEUS'

MAMMA MIA!

THE SMASH HIT MUSICAL BASED ON THE SONGS OF ABBA®

A mother. A daughter. 3 possible dads. And a trip down the aisle you'll never forget!

www.mamma-mia.com

Mamma Mia! original cast recording available on Decca Broadway

TUE, MAY 29, 7:30 PM
WED, MAY 30, 7:30 PM
THU, MAY 31, 7:30 PM
FRI, JUN 1, 8 PM

SAT, JUN 2, 2 PM & 8 PM
SUN, JUN 3, 2 PM & 7:30 PM
\$35 - \$60
OVERTURE HALL



www.overturecenter.com - 201 State St, Madison WI
TICKETS: 608.258.4141 - GROUPS: 608.258.4159 - TTY: 1.866.704.2328

Wed.9th - Game Show Night Sun.13th - Mommy Dearest Specials

Sat. 5th - Cinco De Mayo Celebration

Fri. 18th - Melissa and Friends

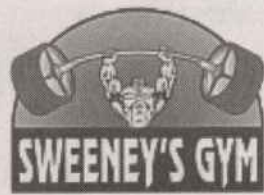
SPECIALS:
TUES: Shot & Beer Night \$5
WED: SKKY's the Limit
THU: 2-1-1 All Night (excluding Top Shelf)
FRI: Prize Night
SAT: Pull Tab Specials
SUN: "Big Liquid Brunch"

Tuesday - Friday 4pm - Close
Happy Hour 5-8pm
Saturday - Sunday 11am - Close

1101 S. 2nd St
Milwaukee
414-383-8900

Sweeney's Gym; Hassle Free, Affordable Fitness Experience

Discover the Difference



Sweeney's Gym offers customized fitness programs for everyone's individual needs & wants.

- One-on-one with a personal trainer.
- Training available for special needs & persons with disabilities. Nutritional counseling tailored to meet individuals needs.
- Weight training & cardio programs for everyone's lifestyle.
- Hour long sessions.

**The weather is getting HOT!
Are you?
Get your body beach ready at
Sweeney's Gym.**

5311 S Howell Avenue, Milwaukee, WI 53207
Phone: (414) 769-0772
www.sweeneysgym.com

You won't feel like just another number

Pure Testosterone

April showers mean new products in the Fitness world for May. I will talk about some hot new product and if it works or not. First is a new product that has been out since last November, it's called Tribulus Shot. This drink has been out for six months now, but I still call it new because it has been very slow to get in the consumers hands. Why? Not many know what Tribulus and the other ingredients are. Now, if ABB named it different, like, Testosterone Shot you would think to yourself, male enhancer, and you would buy pallets of it. Well, that's what they should have done, but ABB is not a on the edge company. Tribulus Shot, in short, gives you an anabolic advantage and naturally supports testosterone levels which is why this is very important. Tribulus Terrestris is an herb that grows in the United States and is often referred to as puncture vine. That's the boring news.

The not-so-boring news? Tribulus is a proven testosterone booster. Getting an extra surge of testosterone before workouts can immediately increase your strength and power, pump up aggression and help enhance muscle growth afterward. The research says one of the main active ingredients in Tribulus is protodioscin, which stimulates the release of luteinizing hormone (LH). LH enters the blood and influences specialized cells in the testicles to increase muscle growth by boosting the amount of protein muscles make. It also immediately spikes muscle strength and power by enhancing the firing of the nerves



FITNESS

Sweeney's Gym is family owned and operated by Michael Sweeney, a personal trainer for the last 8 years. Sweeney's prides itself on caring for people and their health.

that stimulate the muscle. In other words, it's good stuff if your goal is getting bigger and better in and out the gym. If you know what I mean! Timing and dosage: take one prior to workouts. You can drink up to two cans a day. Tribulus Shot has other ingredients like Long Jack extract, which is used in most penis enlargement pills sold today. My score for this product is a ten! Tribulus Shot helps you look better, have better workouts and gives your body that rock HARD look everyone likes. Sweeney's Gym sells Tribulus Shot and a full line of supplement products.

May is Sweeney's Gym one year anniversary! We will have specials for couples; since the government won't let you claim your other half, we will. Stop in to Sweeney's Gym today or go to our website at www.sweeneysgym.com, and thanks for a wonderful year!



Nancy B. Meeks

414-659-1126
414-962-3000
meekssense@aol.com



FIRSTWEBER
Group
REALTORS®



CITYSIDE PLAZA Live in the Historic Third Ward 239 E. Chicago- Live in the heart of the Third Ward's newest & most exciting community. Cityside Plaza features 57 lavish loft-style units. The condos come standard with HWF throughout, even in the bedrooms, granite countertops, SS appliances & other high-end amenities. Immerse yourself in luxury w/exquisite interior touches. Occupancy 2008 \$199,900-\$449,900.



WAREHOUSE 525 Open Wed. & Fri. 11-2, Thur. 5-7 Sat. & Sun. 12-3, 525 E Chicago Ave. Milw. Condos in the Heart of the Third Ward. Built in 1916, & converted in 2006 to 22 Condos. Includes hardwood floors in living areas, stainless steel appliances, in-unit laundry, granite countertops, & maple kitchen cabinets. Price ranges from \$189,900-\$949,900 www.warehouse525.com



GREENWICH ROW 1822 E. Greenwich Ave., Milw. Own a piece of East Side living Eclectic & convenient. Spacious yet efficient. Located at the corner of Greenwich Ave. & Cramer St. Private entrances & 2 car attached GA. Luxurious appointments. Modern conveniences. Overlook the vibrant East Side from balcony or retreat to the privacy of your own home. 2 BR, 2.5 BA. Mid 2007 Occupancy. Price ranges from \$294,850-\$314,850 www.greenwichrow.com



HI-FI LOFTS - Open Sat. & Sun. 11-1 or by appt. 3059 N. Weil St., Milw. All appliances included, stainless steel cabinets, butcher block countertop. In-unit laundry. Shower over tub and pedestal sink. Air conditioned unit. Heated floors in the first floor units and hardwood floors in the units on the 2nd-4th floors. Price ranges from \$128,900-\$199,900. www.hifilofts.com



1400 E. Boylston: 1410, 1420, 1430 Milwaukee - Level lot, located in the city. Electric & gas service on-site, Public water supply, Sewer service on-site. Over 18,000 sq. ft. Zoned RM5 \$720,000



2649 N. Prospect Ave.- Beautifully renovated building. Prime location -blocks from Downer shops. KIT boasts cherry cabs, SS appliances, granite counters & breakfast bar. LR w/artificial FP & access to private sun porch. Kohler fixtures & pedestal sinks. Spacious BRs w/ample closets. In-unit laundry. \$224,900-\$244,900



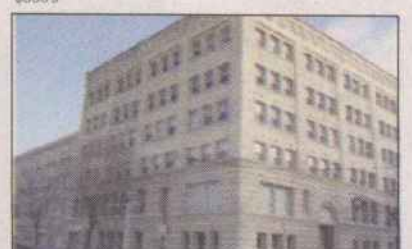
1855 N. Cambridge #306 - New construction quality, unmatched prices near Brady St. Totally renovated 1 BR units incl. HWF, jacuzzi, frosted glass shower dr, in-unit 3/C, tile KIT/entry/BA flrs, Avonite counters, undermount sink, new cabs/appls. Patio entry to Wi-Fi bldg w/videophone security. Elevator, laundry rm., parking access @lobby, some enclosed, off-street parking @ \$10K.



906 E. Brady - Historic Brady Place Townhome w/ sunny southern exposure. Enjoy gas FP in living room & HWF's in LR & DR, kitchen & half bath. Granite counters, maple cabinets, stainless steel appliances in the eat-in kitchen. Fantastic master suite w/ adjacent sitting area & balcony. Relax in whirlpool tub or enjoy views from the rooftop patio. Expandable 3rd floor. \$350's



311 E. Erie #415-Two story condo in newly finished Marine Terminal Lofts. Private balcony overlooks Milwaukee River w/ southern views. Granite countertops, natural wood cabinetry, breakfast bar & HW floors. Half bath on main floor & full bath w/laundry room upstairs. Master bedroom w/walk-in closet & a separate room for an office or den. 2 tandem parking spaces included. \$390's



904 E. Pearson, Milw.- Western Leather Lofts. #109 Dramatic open concept w/original exposed cream city brick & wood beams. Center island, SS appl., custom cabinets. GR, master BR, office, loft area & more \$329,900 #118 - Open concept loft w/cream city brick, post & beam construction -open steel staircase. Birch cabs, solid surface counters & more. \$244,900

Great Disparities and Great Connections

Thirty-three enthusiastic people of color recently invested their time on a precious Saturday in spring to discuss the health disparities of lesbian, gay, bisexual and transgender people of color in Milwaukee. Latino/a, Native American, and African American, they came together as women, men, and transgender people to address their health needs and aspirations.

Brenda Coley, Director of Adult Services for Diverse and Resilient facilitated the day-long event with the goals of increasing participants' knowledge about their shared health concerns and their solidarity as lesbian, gay, bisexual, and transgender people of color. Brenda shared with them the results of two years of data collection in which surveys, focus groups, and key informant interviews were used. Nearly 250 people have participated in these needs assessment processes, and they have shared generously.

Like other LGBT people, this group acknowledged the need to address tobacco use, alcohol use, and the mental health issues related to "minority stress." This concept, minority stress, means those psychological, emotional and behavioral responses related to discrimination and bias. In the face of oppression, our self-esteem suffers and our health behaviors dwindle. For example, a racial or sexual slur can create havoc with our sense of ourselves. Then, usually not consciously,

we give up on or reduce adherence to the protective behaviors that foster good health -- behaviors like exercise, better nutrition, latex use in sex, and moderation in alcohol use.

Participants in the LGBT People of Color Health Forum also considered the themes that emerged during recent focus groups and interviews. They discussed the sense of powerlessness that many have about being able to effectively improve their health behaviors. Further, they noted that many LGBT People of Color have argued that substance misuse and other risk behaviors are part of their culture. Brenda questioned whether this was true or if these are associated with their cultures because the management of discrimination is woven into their cultures.

The whole group considered what a "New Community" would look like, where members found a sense of independence from the misinformation that they held about themselves and each other. Participants talked about a current need to balance how bad conditions really are for LGBT people of color, and how much has been and can be accomplished.

Forum participants also devoted time in small groups to addressing their aspirations for healthier communities of LGBT people in Milwaukee. Each group illustrated their vision of new community for LGBT People of Color. Major themes

included emotional and physical health built on a strong foundation of unity and diversity. They saw people being simultaneously self-sufficient and compassionate. They saw the institutions and organizations that support them in the future as having integrity, respect, and a sense of the humanity of LGBT People of Color.

At day's end, participants commented on how good it was to be together for the day. Demetrius and Kim observed how great it was to merely be with all of those who participated. Miche expressed appreciation for the devotion and commitment of group members. Even as the day-long session ended, it appeared that participants wanted to linger a bit longer; many helped clean the space, organize the materials, and pack away the food. Deep connections appeared stronger, renewed.

Somehow, the forces that impede progress on health issues seemed less daunting.

To learn more about the Milwaukee LGBT People of Color Health Forum held on April 21, 2007, contact Brenda Coley via the Diverse and Resilient website, www.diverseandresilient.org. The forum was funded in part by the Healthier Wisconsin Partnership Program of the Medical College of Wisconsin and the Greater Milwaukee Foundation.



HEALTH

Gary Hollander, Ph.D., (ghollander@queerlifeneews.com) is president and executive director of Diverse and Resilient, a nonprofit committed to the healthy development of LGBT people in Wisconsin. He is also owner and principal consultant of Gary Hollander Enterprises, which assists organizations with their development, emphasizing change management, team development and cultural competency.



BY CHOICE HOTELS

Let our Family take care of your Family for PrideFest 2007.

Only minutes away from the Festival Grounds!

For Reservations Please Call:
414-481-2400 or 1-866-481-2400.
www.clarionmilwaukee.com

5311 S. Howell Avenue
Milwaukee, WI 53207



Supporting and honoring the complexities of trans-masculine and SOFFA lives & communities since 1994

MONTHLY SOCIAL SUPPORT MEETINGS:

1st Saturday of every month
LGBT Community Center, 6:00-9:00pm

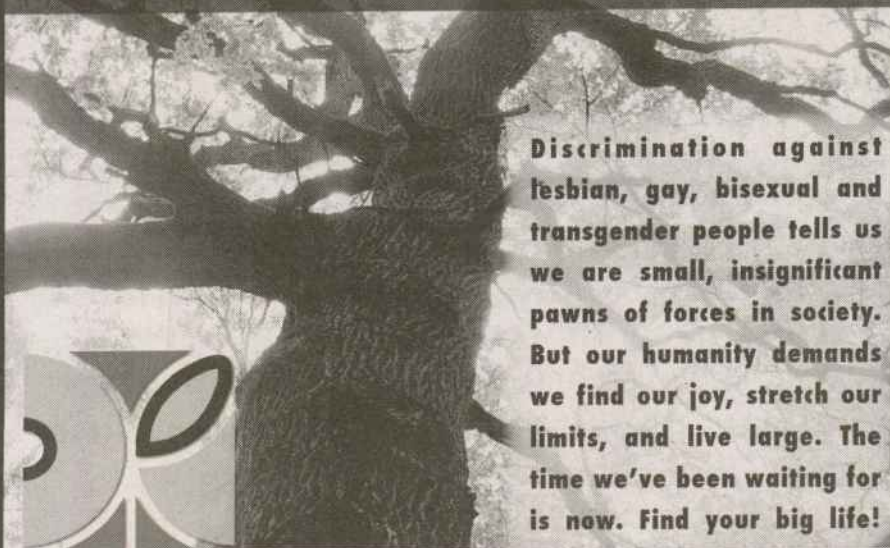
ONLINE RESOURCES:

www.forge-forward.org

CONTACT:

info@forge-forward.org
FORGE PO Box 1272 Milwaukee, WI 53201

FIND YOUR BIG LIFE!



Discrimination against lesbian, gay, bisexual and transgender people tells us we are small, insignificant pawns of forces in society. But our humanity demands we find our joy, stretch our limits, and live large. The time we've been waiting for is now. Find your big life!

Diverse&Resilient is a statewide organization committed to the healthy development of lesbian, gay, bisexual and transgender people in Wisconsin. We accomplish our mission by helping grow the organizations and youth and adult leaders who aid us as a community. www.diverseandresilient.org

1240B East Brady Street | Milwaukee, WI 53202 414.390.0444



Marcia's Second Time Around Inc

Over 7,000 square feet of ever-changing inventory
We buy and sell sofas, tables, hutches, dressers...and much more!

5928 S. 27th St., Milwaukee

414-282-4316

Readers Choice as voted in Shepherd Express!



De Marinis
Dom & Phil's
The View From Bay View

Pizza
Pasta
Sandwiches
Carry Outs
Friday
Fish Fry

Please ask about our daily specials

1211 E. Conway
481-2348
481-2367
Fax: 481-2050

Gift Certificates
available.

Tues. Wed. Thursday Specials:
\$1.25 6 oz Hamburger
\$1.25 5 oz Italian Sausage
Sunday Special:
Buffalo Wings .25*

*In-House Specials Only

Hours: Closed Monday
• Tuesday - Thursday 4pm -10pm
• Friday & Saturday 4pm-12am
• Sunday 3pm-10pm
NO PERSONAL CHECKS PLEASE
www.foodspot.com/denoonsaloon

Military Service People:
Please bring your I.D. and get \$1 OFF a
Lg. Pizza; 75¢ OFF a Med. Pizza;
50¢ OFF a Junior Pizza.

People like me!

"Everyone feared being different, even the cool kids." - Riki Wilchens on junior high

Nearly every trans person I meet reports wanting to meet "people like me."

Often this means "other people who are trans, like me," or "other people who are disabled and genderqueer" or some other pairing of identities. The belief that connecting with other "people like me" seems to give folks a sense of hope that they are less alone and not so "unusual" or "freakish," as many trans people feel at various points in their lives.

We don't see ourselves represented

We can surround ourselves with "people like us" and still feel lonely, isolated, and lacking the connection we so long for.

(accurately, at least) on TV, in movies, or books, so it makes sense that we long for connection based on reflection. For many, seeing someone who is similar can create a norming sense of comfort.

Recently, a group of trans/SOFFA individuals discussed what it means to us as individuals and as a community when we say "people like us". When pressed about "who is like you," no one could answer the question without layers of

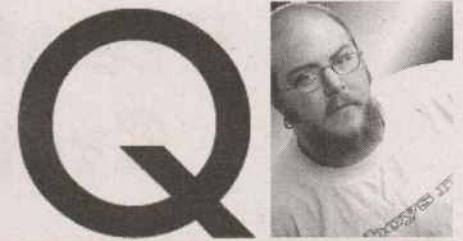
caveats and back-stepping to re-evaluate the truth of their desires. Who, anyway, is like us? What identity or identities are most essential for pairing with others, which need to be reinforced for our survival and happiness? We can surround ourselves with "people like us" and still feel lonely, isolated, and lacking the connection we so long for.

This phenomenon is not unique to trans people and may, in fact, be something bordering on the existential - or just a basic human condition that affects us all.

Frequently, we long for that which doesn't exist. It's possible, too, that it exists, but we cannot see/feel/taste/grok it because it doesn't look like what we expect it to. We rarely step back to reassess, to recognize that we are getting what we need and want. Instead, we continue perpetuating the myth of the unattainable, maintaining our status as a victim or martyr because it's far easier to continue saying that no one "gets" us or no one else is "like us" than to accept that we all share similar, yet diverse journeys.

What would happen if we allowed ourselves to see the possibilities of connection in people who may look different from us; if we opened more doors and actually got to know people, beyond their outward appearance or loudly-projected identity?

Of course, aspects such as race, disability, relationship status, class, sexual orientation, level of education, and gender vector (just to name a few characteristics that are often prioritized as key variables



TRANSGENDER

Michael Munson (mmunson@queerlifeneews.com) is an emotionally intense, transgressively gendered, passionate social agitator who strives for inclusion and harmony by focusing on our human similarities and strengths. He is lovingly committed to his partner and their 12 year old son.

in the "people like us" equation) matter. Many of us, however, pick only one quality as the most important and used it to create exclusionary categories which limit our potential connections, friendships and networks.

If we believe, for example, that only other people of color are like us, we may be missing out on beautiful, deep connections with someone who shares far more than the color of our skin.

Connection doesn't happen overnight, and definitely cannot happen by simply being in the same room with other people who appear to be like us. What connects us is the similarity of our life's experiences, a shared passion, working towards a common goal, or other qualities that are profoundly personal, and rarely exemplified by appearance or identity. Building connections takes an investment of time and energy, requiring us to not stereotype, but to dig deeper and truly listen to the truths and diverse magnificence of others.

LGBT Higher Smoking Rates

A recent study published by Diverse & Resilient, Inc. in Milwaukee reports an elevated use of tobacco among Wisconsin's lesbian, gay, bisexual, and transgender population. A national population-based general survey of more than 44,600 respondents found that lesbians' rate of smoking was about 70 percent higher than that of heterosexual women. Gay men also had higher smoking rates than heterosexual men.

Among LGB participants, higher rates of smoking were observed among people who were 25-44 years old, were non-Hispanic Whites, had lower education, and lower household income. Elevated rates of smoking among LGB college students, compared to heterosexual college students, also have been found. Results found in the information gathered from the 2005 LGBT Health Survey reported that 37 percent of the 640 WI respondents were current smokers.

The study indicates that health disparities among the LGBT population

compared to that of the general population have a direct link to an increase of substance use, including tobacco, along with a greater risk of communicable diseases and high-risk sexual behavior, and mental health and mental disorders.

"LGBT populations are among the most vulnerable and underserved populations experiencing health disparities. Our goal is to motivate individuals and organizations to take action in support of eliminating health disparities," said Gary Hollander, executive director of Diverse & Resilient.

Recommendations developed to address the health disparities included: research on underlying causes, strategies to reduce them, and increasing access to health care prevention and treatment.

For some of us, the summer season brings cookouts and cocktails. Try one of these LGBT Stoli Martini's from Stoli Vodka to liven up a sizzling summer night!

Stoli® Rainbow-tini

- 1 part Stoli® Ohranj
- 1 part Stoli® Razberi
- 1 part Stoli® Blueberi
- 2 parts cranberry juice
- 1 part sweet & sour mix
- fresh raspberries or blueberries



Pour all ingredients in shaker with ice. Shake and pour into martini glass. Garnish with fresh berries.

Stoli® LGBTini

- 2.5 parts Stoli® vodka
- Splash of limoncello
- lemon twist



Pour splash of limoncello in chilled cocktail glass.

Shake vodka in cocktail shaker with ice. Throw away excess limoncello and strain vodka into coated cocktail glass. Garnish with lemon twist.

WRITERS WANTED

QLife is a monthly publication that celebrates Wisconsin's diverse population with boldness and class. Be part of the QLife family and share your talents with the community.

Columnists needed for the following:

- Q Clubbing • Q Sports
- Q???? suggestions



Send your writing samples to
Editor@Queerlifeneews.com.

Zines To Read In Denver When You're Dead

The recent Denver Zine Fest in March 2007 was the second annual event, but you would think they have been doing this for years given the excellent preparation and set-up, publicity, and a good turnout from the fans in the community. While primarily a Denver area event, there were zinesters from Chicago, Boston, and Alabama rounding out the roster. The Zine Fest is a public function of the Denver Zine Library that is housed in a medium-sized room at The Other Side Arts and brings together a diverse collection of over 7000 zines, including a Queer Zine section that has gems in the form of rare zines from the late 1980s up through the present. Here's a sampling of some of the best and brightest zines represented at the event.

School of Life Graduates With High Honors

By sheer coincidence, Denver Zine Library board member Dylan Scholinski was here in Milwaukee the weekend of the Zine Fest for the opening of his art show "Freedom From Depression" at the Gay Arts Center. When I enthusiastically told one of the other out of town zinesters visiting Denver that weekend about Dylan's work, this zinester distilled my description of Dylan's work back to me as "intense but accessible." No truer sentiment could be said! Dylan has been an artist throughout his life, including the period prior to his

transition when as a bio-female she was hospitalized in a mental health facility for exhibiting behavior that was not "gender appropriate." Rather than let the arbitrary decisions and questionable treatments by these so-called medical professionals ruin his life, Dylan sought solace, strength and power through his mixed media artistic expression. Be sure to catch "Freedom From Depression" before the show ends in May, it is a chance to see a unique assemblage of his canvases, some of which aren't framed but simply stretched out on walls. In the zine world, Dylan contributed to **Big Kid Prom '06** [one-off, 2006, 28 pages]. This zine has contributions from a well-rounded group of zinesters and artists in Denver that express in humor and sometimes a little pathos the power inherent in a queer reclamation of an event that, for some, is a hallmark of their high school experience.

Femme Fatale!

The evening before the Zine Fest, The Other Side Arts hosted a reading featuring some of the zinesters who were participating. Two standouts from this event include a self-identified queer fat Latina zinester and activist named Shannon who produces **From Here to There and Back Again** [Issue 2, 2006, 20 pages] and co-produced with Angie **Non-Monogamy: Doin' It and Doin' It and Doin' It Well?** [one-off, 60 pages,

2006]. With the rise of the **Femme Mafia** here in Milwaukee and in other parts of the country, I was very excited to hear Shannon's take on how her femme identity meshes (or sometimes doesn't) with other parts of her identity and how she turns anger, frustration and tears into activism that can help transform beliefs in a broader radical queer world. Most of all, her no-holds-barred honesty balanced with gentle humor and firm conviction makes Shannon a force to reckon with. When she takes up the "noble defense" of monogamy in **Non-Monogamy**, she doesn't take a route normally used and instead expresses opinions as observations from experience. Angie, too, has a way of making her case for non-monogamy that allows the reader to



ZINES

Christopher Wilde (cwilde@qzap.org) is a co-founder of QZAP, artist, DJ and Mac tech support specialist building community in Milwaukee's Riverwest.

form their own opinion and her discourse is neither preachy nor proscriptive. This zine is destined to be **The Ethical Slut** version 2.0 and I highly recommend it for those interested in intelligent discussion on either side of the debate.

Special thanks go to Dylan, Kelly Shortandqueer, and all the awesome folks in Denver. Find The Queer Zine Archive Project on the Web at www.qzap.org.

BRENDA LEWISON ATTORNEY

Law Office of Art Heitzer

633 W. Wisconsin Ave.
SUITE 1410

MILWAUKEE, WI 53203

414-273-1040

- LABOR
- EMPLOYMENT
- DISCRIMINATION
- ELECTION LAW

Attention Advertisers



Don't let your PRIDE fade.

Call today to place your ad in our June Publication of QLife News.



Contact a member of the QLife Sales Team

414-383-8200

ARCW MEDICAL CENTER

At the forefront of HIV health care

Every person with HIV disease has unique needs. At the ARCW Medical Center we are dedicated to learning what matters most to you. We provide the most advanced medical and dental care along with highly supportive mental health services. We help you understand your treatment options and provide the care that is best for you.



Iram Nadeem, MD



John Fangman, MD



Steve Debbink, DDS



Karen Godfredsen, PsyD

Medical Clinic

- Complete medical management of HIV disease
- Treatment of opportunistic infections
- Prescription of HIV medication regimens
- Immune system monitoring
- Treatment of general health conditions
- Immunizations
- STD diagnosis and treatment
- Health education and promotion

Dental Clinic

- Comprehensive examination
- Cleanings and oral hygiene education
- Oral cancer screening
- Scalings and root planing
- Fillings, crowns and bridges
- Root canal therapy
- Dentures
- Oral Surgery

Mental Health Clinic

- Screening for mental health conditions
- Diagnosis of mental health conditions
- Crisis stabilization
- Individual therapy
- Group therapy
- Couples therapy
- Drug counseling and treatment

Call for appointments:

414-223-6800 or
800-359-9272 ext 6800.

**Wisconsin's largest provider
of HIV health care.**

ARCW

AIDS RESOURCE CENTER OF WISCONSIN

Handy Matters

By Todd Schuster

Todd Schuster is the owner of Handyman Matters of West Milwaukee. A lifelong resident of Milwaukee, Todd enjoys helping his community update their residences and business locations. Todd brings 12 years of architectural design experience to his business. Handyman Matters bases its business on preferred pricing, an hourly rate plus materials model benefiting the customer. They pride themselves on their customer relations and are steeped in community stewardship and have received consistent rankings in Franchise 500 and Entrepreneur magazines. Visit handymanmatters.com for more info.

Monthly Project Tip

Sticky difficult doors

There are approximately 1.44 billion residential doors in the United States out numbering people 6 to Nothing is worse or more annoying than a poorly performing door. Below are a few adjustment tips that will come in handy when your doors give you trouble.

1. Tightening the handle screws and the hinge screws twice a year will keep your door swinging true.
2. If your doors are sticking seasonally, with the change in humidity, pull the hinge pins and view all six sides of the door including the top and bottom. If all 6 surfaces of a door are not sealed properly they will change more dramatically with the seasons. Seal the door with stain, poly, or paint and re-hang.
3. If your door sticks just a little bit you may be able to correct this by tightening the hinge screws. If a

screw is found to not be "biting in" to the wood and is spinning with out securing, remove and replace with a longer wood screw.

4. If your door is really sticking year round and is difficult to open it may be time to remove some wood. A door can be shaped or layers of paint can be removed from the sides with a hand planer. Carefully remove even shavings of wood or paint until the door sticks no more.

Temporary Fix for Dripping Water

If you are having difficulty with a copper joint due to a trickle of water that won't stop, push a ball of bread up the pipe to stop the stream of water. **We at Handyman Matters would prefer wheat- if you have it. **

Stud Finder

An electric razor can be just as effective as an electronic stud finder. Turn it on and drag it along the drywall, you will notice a change in the vibration as you cross a stud with it.

Store Open Paint

Glass jars are great because they are less likely to allow the paint to dry out and you can always tell the color of the paint inside. To ensure the paint doesn't seal the lid on and to further the airtight seal, run a couple layers of Teflon tape around the jars threads before putting the lid on.

Silent Screen Door

If your door slams shut with a bang, you can place a couple of short beads of clear silicone caulk along the jamb at a few of the contact points. This will soften the blow. Be sure to prop the door open for a couple of hours after application, to let the bead of silicone dry completely.

Maintenance Checklist

Home Inspection list for May

- Change smoke detector & CO batteries
- Inspect chimney cap & masonry
- Inspect all siding, soffit and fascia boards
- Inspect gutters clean & re-attach as necessary
- Check roof for missing shingles, proper installation, and gaps around pipes and corners

Yes We Can...

... fix, repair, replace, install, remodel, build, adjust, align, check, move, assemble, add, remove, paint, stain, pour, level, set up and take down.

Home •
Office •
Indoors •
Outdoors •



262-240-2580

handymanmatters.com

services that adds value to your home
Bonded & Insured. Professional employees.



Sven's Café

Organic Coffee
Homemade Soups,
Salads & Sandwiches
Outdoor Seating



2699 S. KK Ave.
(corner of Klauickhauk & Logan)

Not so Many Degrees of Separation

It started out as a joke one night, when two friends and I were bored and hanging out at a hookah bar. We always laugh and joke about how slutty our friends are, so we decided to create a 'Gay Boys of Milwaukee Flow-Chart.' The chart mapped out all of the sexual contact (not specifically penetrative sex- sexual contact) between all of the gay boys in the Milwaukee area. Our initial

acquaintances and the chart had more than 70 names and well over 100 connections. And that figure only includes people from the greater Milwaukee area for whom we had names. Individuals such as 'Wausau Guy Whose Name I Don't Remember,' and 'Those Two Hot La Crosse Players' didn't make the list. For our more experienced and forgetful friends, we simply added a connection to a number, such as '30+', '80+', and even '100+'.

Everyone is someone's ex-boyfriend, who is someone else's ex-boyfriend, and so and on so on into big, flaming, infinity.

At this point, the chart crossed the threshold into the virtual world, because it was just too massive to fit on anything but a computer document. It was an enormous, tangled, incestuous monster that had grown larger than we'd ever imagined. The chart then circulated around MySpace, leaving a trail of both shock and embarrassment in its wake. With further contributions from various MySpace friends, the web reached its limit. With more than 300 named and unnamed individuals combined, and just as many links and connections, the chart was so complex that I simply couldn't keep up with it anymore. I couldn't update it; it was just too much.

intent was just to see if the three of us had vicariously had sex with each other through other people.

It wasn't until after the chart stopped expanding that I was able to think about it as anything but amusing. Sitting down and actually thinking about the chart was actually somewhat unnerving, if not depressing. I mean, you could pick any boy on the chart, and through any number of connections you

We started with just our close circle of friends, and all of the names and connections we could come up with off the tops of our heads. With our three young gay minds alone, there were thirty names on the chart. After a few phone calls to some of our most trustworthy and well-networked 'fag hags,' the chart was too big to fit on the back of just one piece of paper. A couple more phone calls to some ex-boyfriends and other



YOUTH

Harry James Hanson, a junior at Shorewood High School, is Co-President of the school's Gay-Straight Alliance, as well as an active member of both its drama department and school newspaper.

could somehow work your way to any other boy on the chart. We were all connected through some number of relationships or hook-ups. Really, everyone is someone's ex-boyfriend, who is someone else's ex-boyfriend, and so and on so on into big, flaming, infinity.

So, was the chart a good thing? Should everyone have an up-to-date version of it plastered to his chest as a reminder? Or, should it be mandatory that you hand a copy of it to any prospective boyfriend/hook-up? Maybe that isn't totally necessary, but being honest with people is. Getting tested regularly for STDs and always practicing safe sex definitely, definitely is.

Perhaps what's even scarier than that big labyrinthine spider web of connections itself is the fact that it took that visualization to really make me realize all of this, and have it stick in my mind. It's definitely something to think about- that that web will only continue to expand; it will never get smaller. It started off as a joke, but it's our life, guys, and its reality.

J. Grant Painting

Call for Estimates and ask me about Special Detailing

Joyce Grant
Cell: 414.232.5767



REGENT REALTY
We're Your Community Realtor!

Milwaukee's Only Gay Owned and Operated Real Estate Company

- The Right Price for Your Home
- Seller and Buyer Agency
- Competitive Commission Structure
- Effective, Aggressive Marketing
- Full-Time & Full Service Realtors

414-774-1251
9323 W. Greenfield Ave.
www.RegentWI.com

Partners in Life
Partners in Business

Benjamin Piccini
Realtor/Owner

Tim Russell
Broker/Owner

Get your HIV results in

20 minutes

FREE Syphilis & HIV Outreach Testing

NEW DATES & TIMES!

Tuesday 5-15 • Fluid 5-8 p.m.
Triangle 9 p.m.-Midnight

Wednesday 5-16 • Woody's 5-8 p.m.
Club Icon 9 p.m.-Midnight

Thursday 5-17 • Harbor Room 5-8 p.m.
Switch 9 p.m.-Midnight

Friday 5-18 • Boom 5-8 p.m.
City Lights 9 p.m.-Midnight

STD Specialties Clinic, Inc. 3251 N Holton, Milwaukee
414-264-8800

Also available for men who have sex with men: The Free Morning Clinic
Saturdays 9am-Noon • Or schedule an appointment (M-F 8am-6pm)

Historic Brady Street Area

1735 N. Franklin

Victorian 3 unit Apartment built in the 1800's. With Loads of Charm, Hardwood Floors, High Ceilings, Huge Yard with Private Patios.

REDUCED \$342,000.

Carole Wehner
414.704.7103

Realty Executives Metro

REALTY EXECUTIVES

We are playing it safe



Because one in four people has a sexually transmitted infection, and 80 percent of the people who have one don't show symptoms. Not when they get it and not when they pass it on. Confidential testing and treatment are available at Planned Parenthood - high quality, personal care at an affordable cost.

CALL
1-800-230-PLAN
FOR THE PLANNED PARENTHOOD HEALTH CENTER NEAREST YOU

Planned Parenthood of Wisconsin, Inc. | ppwi.org

DITC: Dykes In The City

There's something special about being an urban Lesbian. Especially in the summer time when much of public life takes place outside. There are places to go to meet other Lesbians. There are spaces where it is ok to be out and open about who we are and who we love. There's even a fashionable clothing line that caters to the lifestyle of Dykes In The City (DITC).

Some would argue that the ability to claim a Lesbian or Gay identity is an essentially urban phenomenon, or at least historically it was. Imagine living in rural Wisconsin, or rural New York, in the early 1900s. Opportunities to seek same-sex love must have been pretty slim. But, in

urban spaces, distinctive Lesbian and Gay subcultures were emerging, different ways of living opened up opportunities for women loving women and men loving men to be together. Women with the means to formed "Boston marriages" and were accepted by their neighbors, treated as a couple by their peers, and celebrated in the literature of their time. By and large, what we now know of as Lesbian or Gay cultures sprung out of these urban environments.

However, as many of us know, living in the city can be a double-edged sword. The opportunities for freedom and to meet others of the same identity and mindedness exist amidst the greater potential for violence, surveillance, and constraint. There's a reason why Lesbian and Gay bars were located in shady areas of the city, often unmarked and known as "Lesbian" or "Gay" only by people who knew people who had already been there. The same anonymity of the city that gave Lesbian and Gay people the ability to explore their identity and sexuality also gave those who sought to harm Lesbians and Gays equal opportunity to do so, often with no reproach from the law.

Living in the city we develop ways to navigate through it - we know for example, that we can hold our partner's hand on this side of town, or in this restaurant, but we might not be too sure or as open in another part of town, at another restaurant. We seek out Lesbian or Lesbian-friendly spaces - not only as places where we know we can go, but as places we know we want to support. What



WOMEN

Jennifer Curtis has been an active member of the Milwaukee Lesbian community since 2002. She is also involved in the Lesbian, Gay, Bisexual, and Transgender Visioning Project, a local group that is working to create unified and respectful collaborations between all members of our diverse community. She lives with her wife, cat and dog and is currently pursuing her PhD in Urban Studies at UWM

makes a space Lesbian or Lesbian-friendly is often in the eye of the beholder. Some women may feel that the only spaces where they can truly express themselves are in the bars, others might feel that they are at their most open and free at social events that are put on specifically for Lesbians.

Yet, in many ways we can play a more subversive role in creating Lesbian spaces. Wherever we go can enact "Lesbian space" - if we refuse to change how we behave, if we are open about who we are, if we hold our partners hand at any restaurant, and if, when asked who we are buying that new pair of sunglasses for, we say, our wife, our partner, our girlfriend. It may seem small and insignificant, but it's how change gets done - by refusing to hide who we are in any interaction, we open up more and more spaces for other Lesbian and Gay people to feel safe being who they are at all times.

Joseph Siegworth
MasterWork
Massage

- Relaxation
- Deep Tissue
- Lomi Lomi
- Cranial/Sacral
- Polarity
- Nutrition
- Master Reiki

(414) 839-6682

The director of **SHOWGIRLS** and **BASIC INSTINCT** returns to his roots!

★★★★★
(HIGHEST RATING)

Glenn Kenny
PREMIERE MAGAZINE

A FILM BY PAUL VERHOEVEN
BLACK BOOK

SONY PICTURES CLASSICS

LANDMARKS
NOW PLAYING! ORIENTAL
Farwell and North • (414) 276-8711
WWW.BLACKBOOKFILM.COM

DON JACOBS  **MILWAUKEE** *Never wonder if you paid too much.*



5727 S 27th Street
414-847-1022

5757 S 27th Street
414-847-1019

www.donjacobsmilwaukee.com

This Month in Wisconsin LGBT History - May

By Don Schwamb

35 years ago-1972- Popular bars at this time include The Mint Bar, The Cove, Club 546, and the River Queen, and new bars opening in 1972 include Wreck Room, the Shack (Kenosha), JoDee's (Racine).

35 years ago-1972 30 people meet in Church For All People to plan a Gay Pride week for Milwaukee. Madison Gay Liberation Front files brief in defense of Paul Safransky, the first litigation in the history of Wisconsin raising the question of a homosexual's right to hold public employment. James Rusk and Nick Gaglaino hold a marriage ceremony by a Catholic priest at a private home in Green Bay.

Businesses popular at this time: Your Place, Factory, Ten Hundred East bars, Rhubarb Books and Ramie's adult bookstore, all in Milwaukee; and the Back Door in Madison.

30 years ago-1977 Patrick Batt, chairperson of the GPU, is fired for being gay (his case is appealed all the way to the U.S. Supreme Court- Patrick now lives in San Francisco). The Down Under Bar in La Crosse, less than a year old, is gutted by fire - arson is suspected. Sugar Shack lesbian bar holds 1-year anniversary, while other popular businesses include "On Broadway" (in the Factory), Beer Garden, Your Place, the Circus, Paradise Books, and Le Club Finlandia baths.

25 years ago-1982 Amazon, the feminist/ lesbian news magazine at various times called "A Feminist Journal" and "The Midwest Journal for Women", celebrates its 10th anniversary.



2007 PrideFest planning

Planning is underway for the History Project/ SAGE display at PrideFest 2007! Our theme this year will be "performing groups", and will feature a display of materials from groups such as the Fest City Singers, Cream City Chorus, Men's Voices Milwaukee, Women's Voices Milwaukee, Womonsong, Shoreline Dancers, and Cream City Squares. If you have photos of events or meetings for any of these groups (or others), we'd be happy to include them and return them to you after PrideFest, OR scan and return them immediately. Contact Bill at the SAGE office (414-224-0517) with any materials you are willing to loan us for this display. There will also be an "In Memoriam" display, recognizing the contributions of Eldon Murray, Terry Boughtner, and Tom Boll to the community.

THE COMPETITION HAS BEGUN!

YOU could be the next Pride Idol and open for Joan Jett at PrideFest!

Compete at these venues or stop by to cheer on the talent! *Arrive at least 30 minutes before start time to register. All rounds are ages 21+ except the WILD CARD. Photo ID will be required.*

Sponsored by **LCSAGE**

PRELIMINARY ROUND SCHEDULE*

May 2 at 9pm, Club 5 (5 Applegate Ct, Madison)

May 6 at 9pm, PUMPI! At Three (722 N Milwaukee St, Milw.)

May 9 at 9pm, Club Icon (6305 120th Ave, Kenosha)

May 10 at 9pm, Roscoe's (3356 N Halsted Ave, Chicago)

May 13 at 9pm, Rascals Bar & Grill (702 E Wisconsin Ave, Appleton)

May 16 at 9pm, Walker's Pint (818 S 2nd St, Milw.)

May 17 at 9pm, Milwaukee Pumphouse (2011 S 1st St, Milwaukee)

May 18 at 9pm, La Cage (801 S 2nd St, Milw.)

May 24 at 9pm, Switch (124 W National, Milw.)

May 31 at 9pm, MONA's (1407 S 1st St, Milw.)



★ ★ ★ **20 YEARS** ★ ★ ★
PrideFest®
June 8, 9 & 10th - Milwaukee's Lakefront



WILD CARD at PrideFest: Friday, June 8, 6:30pm
(This round open to anyone ages 18 and up!)

SEMI-FINALS at PrideFest: Saturday, June 9, 4pm

FINALS at PrideFest: Sunday, Jun 10, 4pm

Pride Idol Winner opens for Joan Jett and The Blackhearts on Sunday, June 10 during the Headline Show, which kicks off at 6pm on the Miller Lite Main Stage at PrideFest!

**Dates and times subject to change without notice. Full rules and regulations available at www.pridefest.com.*

Sharon Tyler, first preliminary winner at Triangle in Milwaukee, Apr. 20th

2004 Winner **CORKY MORGAN**,
2006 Winner **BRETT GORDON**,
2005 Winner **JAIZON PLAGA**



Promoting Diversity in Your Home

Especially if your Child is LGBT-Q or Gender Variant

While at Disney World a few years ago, I bought Alex a blue satin pillow that says, "Waiting for Prince Charming." It seemed the perfect souvenir for my fabulous gay son. It hangs in his bathroom and is a great discussion-starter. Our décor reflects our unique family in other ways too. I thought I'd share a few ideas to make your environment LGBT friendly for your gay kids.

At Home - Do you have photos and art work depicting all kinds of families? Same gender couples? Do family photos include partners and close friends? If you display Christmas decorations, do you pair up Santa and Mrs. Santa? Or do you let Santa have his (or her) choice of partners? Last Thanksgiving, my family arranged the Pilgrim/ Invader and Native figurines and enjoyed the new same gender and cross-race pairings.

Your Neighborhood - Diversity all around is usually a better place to raise gay teens.

Magazines - Does your coffee table have Mademoiselle and 16? Try OUT, the ADVOCATE and of course, Queer Life News.

Books - Do kid's books in your collection depict ALL kinds of families? Those with two moms and two dads? People of different races? Those with disabilities?

Toys - Are toys and games gender neutral? Does your dollhouse have enough figures to pair up two moms or two dads? Are there a variety of races? Are some figures gender neutral? How are children treated if they choose toys and games that are typically for other genders? Kids who are allowed to freely explore their interests have less anxiety, a stronger self-image and solid skills.

Clothing - Do you have rules about dresses and jeans? And who wears what when? About grooming and "appropriate choices?" Are they gender related and rigid? Try making them flexible and affirming to the child's preferences.

Personal Space - Does your youth or teen have private space? Does this include photos of "crushes?" same gender crushes? Famous gay couples and singles?

School Choices - Do you know the % of LGBT youth and teens in your child's school? (Guess what- this info is NOT on

the DPI website!) Groups like PFLAG are great places to network and get the scoop! You can also ask schools if they support Gay-Straight Alliances and provide private locker rooms and bathrooms.

Medical Care - Are your physicians and other medical people aware of and affirming to LGBT folks? Do you go with your teens for HIV tests at Pridefest? Going as a family normalizes the process and prepares teens for healthy futures. Do your teens know about free clinics and Title X-funded agencies? Do they have permission to transport friends there as needed? Have you provided them with a supply of bus tickets to share with others?

Choice of Friends - Are LGBT adults and youth part of your circle of friends? Are they included in parties and other events? How about people in "gender-variant" career?

Community Groups, Houses of Worship and Religious or Spiritual Places - Does your child attend Project Q? GSA? Are these OK alternatives to other groups? To sports? Is your place of worship welcoming and affirming to LGBT folks? Are gender roles flexible and



PARENTING

Cyndie Ody-Weis (MAMAQLN@yahoo.com) is mom to two daughters and a son, all of whom date men. Cyndie is an active PFLAG member, college teacher and freelance writer, whose works have been published in Roots and Wings, Adoptive Families, Adoptalk, Faithwriters and Advocate.com.

do your children see men and women in leadership positions? Can youth find a spot to grow spiritually as they choose?

Ceremonies and Celebrations - Do you celebrate National Coming Out Day? Queen's Day (Amsterdam 4-30) Stonewall 6-29-69? Lawrence v. Texas 6-29-03 first dates? Proms? Drag shows? Does a picture of your child's first Pridefest or parade have a place of honor in the family album?

While some of these décor ideas may not "fit" for all families, acknowledging each child's unique identity is essential. Start with a few changes and then add on every month or two and see how it feels. Oh, I think those Disney pillows are still available at the Cinderella kiosk.

QLife Quickies

HIV drug market in the billions

ScientificAmerican.com is reporting that by 2015 the HIV market will balloon to \$10.6 billion, in part because of new drugs from Merck, Tibotec, and Pfizer. The market was worth around \$7.1 billion in 2005 and will be changing significantly as new classes of drugs are introduced. According to a report released by IMS Health, the global pharmaceutical market grew 7% in 2006, to \$643 billion.

Iowa Legislature Passes Nondiscrimination Bill

Des Moines, IA - April 25, 2007, members of the Iowa House of Representatives voted 59 to 37 to approve a bill outlawing discrimination on the basis of sexual orientation and gender identity in employment, public accommodations, housing, education, and credit practices. The bill passed with bipartisan support, with nine Republicans voting in favor of the bill. This legislation, which passed the Iowa Senate on March 26, 2007 by a 32-17 vote, must be sent back to the Iowa Senate for concurrence with the House version.

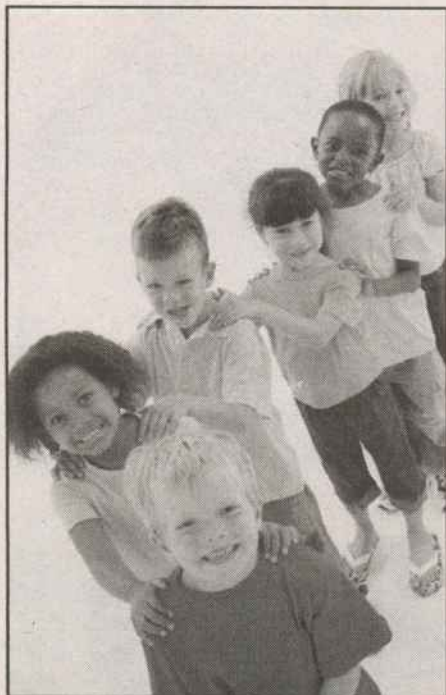
When the bill is signed into law, Iowa will become the nineteenth U.S. state to ban workplace discrimination on the basis of sexual orientation and the tenth to ban discrimination on the basis of gender identity.

frAme
2010
LARGE SELECTION
CREATIVE OPTIONS
2010
GARAGE

FULL FRAMING SERVICES

2010 E. Thomas Ave
1 block north of North Ave,
between Murray & Farwell
/414.962.2010

mon - fri 10-6
sat. 10-4



Working in partnership with the Bureau of Milwaukee Child Welfare

There is more than one way to become a parent.

You can parent a child on a temporary basis through foster care or become a parent for life through adoption.



Children's Service
Society of Wisconsin™

A member of Children's Hospital and Health System.

To learn more about becoming a foster or adoptive parent, call:

(414) 264-KIDS

Children's Service Society of Wisconsin does not discriminate on the basis of age, sex, race, color, creed, sexual orientation, national origin or handicap.

QLife Quickies

WHO: Access To HIV Treatment Improving

Geneva – According to the World Health Organization, lower prices for HIV drugs have significantly improved access to treatment for people in poor countries, but figures are still far off target for the United Nations' long-term goal of universal coverage by 2010.

By the end of 2006 some 2 million people in low and middle-income countries were receiving the anti-retroviral drugs that help treat the symptoms of HIV, according to WHO's annual progress report.

This represents an increase of 54 percent on the 1.3 million people treated the year before, meaning about 28 percent of those in need now receive the drugs.

Price competition from manufacturers of generic drugs has forced pharmaceutical companies to lower the cost of treatment.

While Latin America leads the way with treatment available for 72 percent of those who need it, sub-Saharan Africa has also made significant progress and now provides the drugs to 28 percent availability, up from only two percent in 2003.

The lowest access rate in poor countries is in the North Africa and Middle East region, where about six percent of people who need HIV drugs receive them.

American Airlines Focusing on Women's Travel

Fort Worth – American Airlines has launched AA.com/women, becoming the first airline in the industry to introduce a convenient online resource specifically designed for its female customers.

Development of AA.com/women follows in the path of last year's launch of American's unique online resource and booking portal, AA.com/Rainbow, dedicated to LGBT business and leisure travelers. As the industry pioneer in reaching the gay and lesbian market and adding to its legacy of firsts, American was the first airline to establish a dedicated LGBT sales force, the American Airlines Rainbow TeAAM.

Nearly 50 million female passengers board American Airlines flights each year.

AA.com/women's content includes information on safety and security; saving time and money while traveling; traveling with friends, family or partners; stories and advice from other women travelers.



PRIDE

Do You Have it?

QLIFE WANTS YOU!

Tell us what you think about LGBT Pride, the labels we give each other, and the ones we don't want to hear.

submit responses by May 25:
qvoice@queerlifeneews.com, or
go to www.queerlifeneews.com to
contact us.

Responses will be printed in the
June issue of QLife celebrating
PRIDE.

SPEAK UP!

Cream City Foundation Announces Spring Grants

Cream City Foundation in Milwaukee has announced its awards for the Spring 2007 grant cycle. CCF is proud to offer support to the following programs/organizations: \$5000 has been awarded to Center Advocates to support the organization of gay and lesbian Milwaukee Public School (MPS) employees who need health insurance for their families into an educational campaign to secure domestic partner benefits at MPS.

A \$2000 grant has been awarded to the Lesbian Alliance of Metro Milwaukee to support the creation of a pilot lesbian women's music series to start in the summer of 2007. The series will consist of monthly performances by lesbian musicians in a substance-free space.

CCF awarded \$2228 to The Queer Program to underwrite the creation of a Q-Youth Cable TV Training Project that will train LGBT youth the techniques of

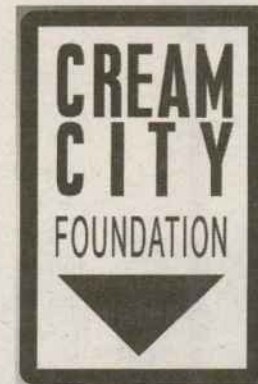
basic cable access television production.

The Cream City Foundation is currently soliciting applications for funding for groups and programs that enhance the quality of life for Lesbian, Gay, Bisexual, and Transgender (LGBT) people. CCF believes strongly in the importance of programs and organizations that use funding to strategically advance the dignity, worth and health of every LGBT person in Southeastern Wisconsin by achieving and impacting sustainable social

change.

To accomplish this goal in 2007, CCF is particularly interested in applications that focus on or include a component that raises positive LGBT visibility in the mainstream community.

For additional specifics on the grant process, visit the Cream City Foundation website at: www.creamcityfoundation.org or contact Maria Cardenas at: 414-225-0224



State Invests in ARCW Dental Clinic

Milwaukee, WI -The AIDS Resource Center of Wisconsin (ARCW) is the recipient of a \$349,800 Wisconsin Department of Health and Family Services Oral Health Access Grant to increase its capacity to provide dental care to people living with HIV across Wisconsin. ARCW is one of only seven organizations awarded funding from a pool of thirty-nine applicants.

"We are grateful for the funding to provide dental care - a vital component of comprehensive health care for people with HIV," said Dr. Steve Debbink, Director of Dental Services for ARCW. "People living with HIV have unique oral health care issues and have often gone without professional dental care for long periods of time. As a part of the ARCW Medical Center, the Dental Clinic is in a position to alleviate the negative effects HIV infection has in the mouth and help HIV-positive people live long and healthy lives."

With this funding ARCW will be able to increase the number of patients

receiving dental care through the ARCW Medical Center's Dental Clinic by 25%, from 1,069 in 2006 to 1,336 patients by the end of 2007. To accomplish this goal, ARCW will use these funds to complete the construction of a new HIV Dental Clinic in Green Bay and replace outdated dental equipment in the Milwaukee clinic with new, state-of-the-art equipment enabling ARCW oral health care providers to work more efficiently.

the queer program

hosted by:
Michael Lisowski
Charles Daniels

one milwaukee. one lgbtq vision.
news and information for and about the LGBTQ community since 1992.

LIVE Mondays @ 6:30PM
TIME WARNER 96
replay Saturdays @ midnight and 10pm

feedback
(414) 263-8500
queerprgm@aol.com
P.O. Box 090441



Proudly Serving the Gay, Lesbian and Bisexual Community

HUME LAW OFFICES

Kathleen E. Hume, Esq.

Family Matters • Estate Planning

(262)789-6845

350 Bishops Way, Suite 204 • Brookfield, WI 53005



Q

PASSINGS

Paul Jensen

MILWAUKEE - On April 6th 2007, Milwaukee lost a favorite friend in the community. Paul Jensen, 41, passed



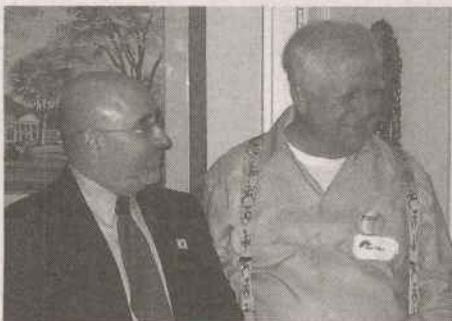
away unexpectedly but left a legacy of laughter with all who knew him.

He was born in Racine, WI in 1966, and by the time he was 2-1/2, he was already telling jokes. He grew up fascinated by cars and radios, and spent many moments blissfully figuring out how they were put together.

A recent visit to M's bar on 1st street where Paul bartended, showed just how much he was loved. Still reeling from the news of his death, the atmosphere was clouded in sorrow. But only for a few moments. A memory would come back, and Melissa, Brian and a handful of patrons would break out in laughter. Even in their sadness, he has a way of breaking the ice, and making them feel better. He will be, and is, truly missed.

Paul is survived by his mother, brother and sisters, and scores of beloved friends and family throughout the country.

Center Advocates



Evan Wolfson, founder of Freedom to Marry and named by Time Magazine as one of the world's 100 most influential people, appeared April 10 at a Milwaukee fundraiser for the equal rights work of Center Advocates. Pictured (L to R): Evan Wolfson, and Advocates board member Ray Vahey.

Simplify Your Move.



TWO MEN AND A TRUCK. "Movers Who Care."

Residential • Commercial • Insured
Local, Statewide & Interstate
Free Estimates • Packing Supplies & Services

**We Sell
Boxes!**

Brown Deer
(414) 354-5164

West Allis
(414) 257-2700

Franklin
(414) 421-2099

US DOT 1278501

www.twomenandatruck.com

Myatt Legal Plan
Members Welcome

Attorney at Law **Warren J. Klaus**

Partnership Agreements, Probate/Trusts, Wills, Revocable Living Trust, Title XIX/Estate Planning, Durable Power of Attorney, Non-Probate Transfers, Real Estate, Small Business Matters, Residential Offers created while you wait

• General Practice of Law • Free Health Care Power of Attorney

OFFICES:

5665 S. 108th St. Hales Corners, WI 53130 • (414) 529-2800

• fax (414) 529-6447

Crivitz Office: (715) 757-2173

DOWNTOWN: Milwaukee Bar Association 424 E. Wells Street Milwaukee, WI 53202

FREE First Consultation in PERSON or via EMAIL wklaus8163@aol.com

QLife Quickies

Representatives Introduce Employment Non-Discrimination Act

Washington - On April 24, Reps. Barney Frank, D-Mass.; Deborah Pryce, R-Ohio; Tammy Baldwin, D-Wis.; and Chris Shays, R-Conn., introduced the bipartisan Employment Non-Discrimination Act in the U.S. House of Representatives. The bill addresses discrimination in the workplace by making it illegal to fire, refuse to hire or refuse to promote an employee based on the person's sexual orientation or gender identity. In 33 states across America, it is still legal to fire someone based on his or her sexual orientation, and in 42 states, it is still legal to fire someone for being transgender.

The Employment Non-Discrimination Act would end this workplace discrimination.

Don't Ask, Don't Tell Update

- Nearly 800 specialists with critical skills have been fired from the U.S. Military under "Don't Ask, Don't Tell" including 323 linguists, 55 of whom specialized in Arabic. (GAO report).

- At least 65,000 lesbian, gay and bisexual Americans are already protecting our homeland. (Urban Institute report). More than 10,000 have been discharged under "Don't Ask, Don't Tell" since the policy was implemented in 1993.

- American taxpayers have paid between \$250 million and \$1.2 billion to investigate, eliminate, and replace qualified, patriotic service members who want to serve their country but can't because expressing their sexual orientation violates "Don't Ask, Don't Tell". (GAO report). That money could be better spent on at least a dozen Blackhawk helicopters, armored plates for tanks and Humvees, or Kevlar body armor for troops.

Celebrating Mother's Day with Herman

What is a great way to celebrate Mother's Day? Easy, have Herman at the brunch you are planning for your Mom. This is a recipe for a sweet sourdough that is also a gift that keeps on giving. No, beans are not one of the ingredients! After all who would eat a bean coffeecake? The intent is to give a freshly baked coffeecake and a cup of starter dough with the directions. Along with the flowers, and jewelry, and chocolate, and trip to a day spa....and...and.....

HERMAN STARTER DOUGH

(use a glass or plastic bowl)

1 pack of dry yeast
3 tablespoons of sugar
2 cups of flour
2 cups of water 110-115 degrees
1 teaspoon of salt

Dissolve yeast in 1/2-c. warm water and let it sit for 5 minutes. Combine the 3 dry ingredients. Use a non-metal bowl. Mix well and stir in the remaining water. Add yeast mixture and mix well. Cover and let it stand for 3 days in a warm place. Stir 2-3 times a day. When the time is up place the fermented mixture in refrigerator. Stir daily and use on the 11th day. Let it stand at room temperature for at least 1 hour. Stir and remove the amount you need for the recipe. Replenish the remaining dough with 1/2 cup of sugar, 1cup of flour, and 1 cup of milk.

HERMAN COFFEECAKE

MIX TOGETHER:

2 cups of Herman starter at room temperature
2/3 cups of vegetable oil
2 eggs

STIR TOGETHER:

2 cups flour
1 1/2 tsp. cinnamon



Q

COOKING

2 teaspoons baking powder
1/2 teaspoon salt
1 cup sugar

1 cup chopped pecans
1 cup raisins

TOPPING

1 cup packed brown sugar
3 tablespoons all-purpose flour
1 teaspoon cinnamon

1/4 cup butter/margarine softened
GLAZE: (boiled for 3 minutes)
1/2 cup margarine 1/4 cup of milk

DIRECTIONS:

Heat oven to 350 degrees.

Grease and flour a 9x 13 baking pan

STIR together Herman, oil and beaten eggs.

MIX flour, cinnamon, baking soda, baking powder, salt, white sugar, nuts, raisins.

ADD this mix to the Herman mixture and stir well.

POUR into your baking pan.

TOP with crumbly mixture of brown sugar, flour, cinnamon and butter.

BAKE at 350 for 30-40 minutes

GLAZE by pouring onto the hot coffeecake the mixture of butter, milk and brown sugar, which has been boiled for 3 minutes.

Eat, enjoy and remember to share.

ARTS CALENDAR

NOW THRU - JULY 13TH

"Encounters with Berry and Kreutz" Danceworks Gallery, 1661 North Water Street. Gallery hours: Monday through Friday 8:30-3:00 PM, Saturday 9-3 PM Admission: Free. For additional information, call Danceworks, Inc. at 414/277-8480 or visit us online at www.danceworks1661.org

MAY 2

UWM Choirs Spring Concert: The UWM Choirs perform the second of three spring concerts. Helene Zelazo Center for the Performing Arts, 2419 E. Kenwood Blvd. 7:30 p.m. \$10 general/\$7 students & seniors Tickets & information: (414) 229-4308

MAY 4

To honor Professor Thomas L. Dvorak, musical visionary and Director of University Bands for twenty-eight years, the Peck School is presenting a Celebration Concert that will also serve as the kick-off of a Thomas L. Dvorak Music Scholarship Fund. UWM Wind Ensemble & Youth Wind Ensemble I at the

Helene Zelazo Center for the Performing Arts, 2419 E. Kenwood Blvd. 7:30 p.m. \$19 general/\$10 students & seniors (gala tickets also available) Tickets & information: (414) 229-4308

MAY 5

QPICK

River's End Gallery will feature "Spring Blooms and Wisconsin Wildlife" from Wisconsin artists. Visit our vast array of flower and wildlife paintings and wildlife sculpture. A special event for the May 5 Waukesha Art Crawl is the River's End Gallery sponsored free horse carriage rides around downtown Waukesha beginning at 6 p.m. River's End Gallery, 380 W. Main Street. Free parking is available behind the gallery in Clinton Street parking lot. Phone: 262-896-8875 Web Site: www.riversendgallery.com

MAY 5

African Music Night. kt's Universal Love Band and Lucky Diop /King Ibu Project Club Timbuktu 520 E.

Center Street Milwaukee. 9:30 pm

NOW THRU MAY 6

The Boulevard Ensemble Studio Theatre closes its triumphant 21st season by staging the Milwaukee premiere of the whimsical comedy "A Shot in the Dark." Visit www.boulevardtheatre.com for a listing of show times. Call 414.744.5757 to contact 24-hour voicemail/office. Boulevard Ensemble Studio Theatre, 2252 South Kinnickinnic in Bay View. All tickets--\$20. All prices are cash or check only. Please--no "babes in arms. Latecomers are seated at the discretion of the house management.

MAY 8-10

Milwaukee LGBT Film/Video Festival & Union Theatre: Documentary Frontiers "Wrestling with Angels" - a feature documentary film about the Pulitzer and Tony Award-winning playwright Tony Kushner (Angels in America, Caroline or Change, Homebody/Kabul). At its core the film explores the mystery of creativity, and is an inspiring tale of how a passionately committed person can make a difference for social justice, and become an outspoken activist, a compassionate spokesperson for outsiders, and one of America's most creative playwrights. Union Theatre, 2200 E. Kenwood Blvd. at 7 PM Tickets: \$5 general/\$4 students, campus community, and seniors. Info: (414) 229-4070

MAY 10

QPICK

The Milwaukee Ballet closes its season with Michael Pink's fiery retelling of William Shakespeare's romantic masterpiece, Romeo & Juliet. After premiering in Milwaukee in 2003, it has become one of the Milwaukee Ballet's signature productions, acclaimed by critics worldwide. Runs May 10-13 in Uihlein Hall of the Marcus Center for the Performing Arts, 929 N. Water Street, Milwaukee. Tickets range from \$20-\$85. To order call 414-273-7206 or visit www.milwaukeeballet.org.

MAY 11

Cedarburg Cultural Center presents BARNES, BALES & BOVINES Paintings by Susan Hale and Claudette Lee,

reflecting the agricultural landscape of the State of Wisconsin. Thru June 24.

Opening Reception: Friday May 11, 5-9pm Cedarburg Cultural Center, W62 N546 Washington Ave,

Cedarburg, WI 53012. www.cedarburgculturalcenter.org 262-375-3676

MAY 11-13

QPICK

CHICAGO: THE MUSICAL (5 performances) Milwaukee Theatre, Come on, babe - experience it live and in person! The one, the only CHICAGO. It's Broadway's most popular musical - a razzle dazzle tale of sin and celebrity. And now, you can see it LIVE. The recipient of six Tony Awards, two Olivier Awards, a Grammy and thousands of standing ovations, CHICAGO is the sensation that just keeps getting bigger and bigger. The Milwaukee Theatre 500 W. Kilbourn Avenue Milwaukee, WI 53203. 414.908.6001. Tickets are on sale now at The Milwaukee Theatre Box Office and all Ticketmaster outlets, by phone at 414-276-4545, or online at www.ticketmaster.com.

THRU MAY 12

Don't miss Milwaukee's most eagerly awaited annual rite of spring - the MIAD 2007 Senior Exhibition. Works in a variety of media and approaches to art and design by 140 seniors representing MIAD's 11 B.F.A. majors will be on view in all college galleries. Milwaukee Institute of Art & Design, 273 E. Erie

St., Free, Tuesday through Saturday, 10 a.m. - 5 p.m. 414-847-3200. www.miad.edu

MAY 12

Morrissey at the Riverside Theater, 116 W. Wisconsin Ave. 414-286-3663. Tickets \$34.50

MAY 17

Unruly Music: Electro-Acoustic Music Center Salon #22 Music Building B60, 2400 E. Kenwood Blvd. 7:30 PM. FREE Information: (414) 229-4308. Electro-acoustic and multi-media works by UWM students.

MAY 21

GRAVA 207 E. Buffalo St. 414-277-8228

A L L E R Y **DARK WINGS RAVENS AND CROWS**



AN EXHIBITION OF HAND PRINTED WOODCUTS BY

ARLENE TORBICA APR 20 - JUN 9

Join us for an Artist Reception Gallery Day Sat. Apr 21 Noon - 4 PM

MAY 25

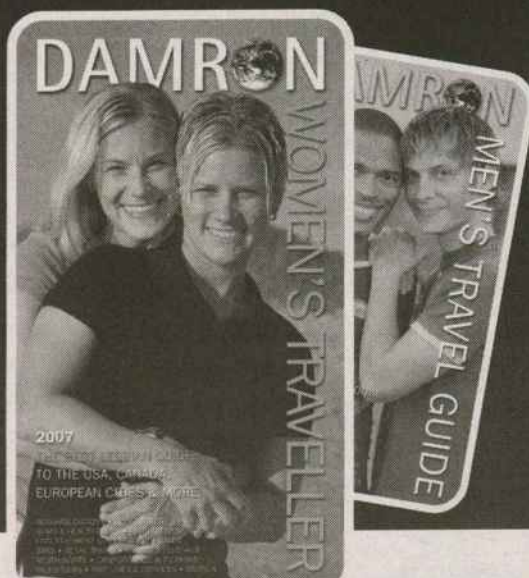
Experimental Film/Video Series at Woodland Pattern "Minimalism and Its Legacy" at Woodland Pattern Book Center, 720 E. Locust St. 7:00 p.m. \$2 admission. Info: (414) 229-4758 or crlebog@uwm.edu.

MAY 26

QPICK

The Lesbian Alliance Daughters of Sappho Art Exhibition at The Milwaukee Gay Art Center 703 S. 2nd St. Milwaukee, WI 53204 414-383-3727. Reception with refreshments will be held May 26. 5-8pm. The Lesbian Alliance in collaboration with MGAC presents an art exhibition of work produced by lesbian, bisexual and transgender women. Sappho was an ancient poet, teacher and mother from the Island of Lesbos. In the spirit of Sappho, this exhibition seeks to celebrate as well as to educate about the diverse life experiences of its participants. This eclectic collection includes contributions from local, national and international female artists. Works touch a variety of subject matter ranging political to the sensual, and to the abstract. The reception is free and open to the public. Exhibit will run thru June 30, 2007. Additionally, several pieces from the show will be displayed at PrideFest, June 8 - 10, 2007.

June deadline is May 18, 2007.



Trip Out!

Take America's favorite LGBT travel guides with you!

800/462-6654

Call today and ask about Damron Travel Packs:

- 2 Damron guides for \$30
- 3 Damron guides for \$40

Want more? Get LGBT travel listings, city files, events, tour operators, and more on our website

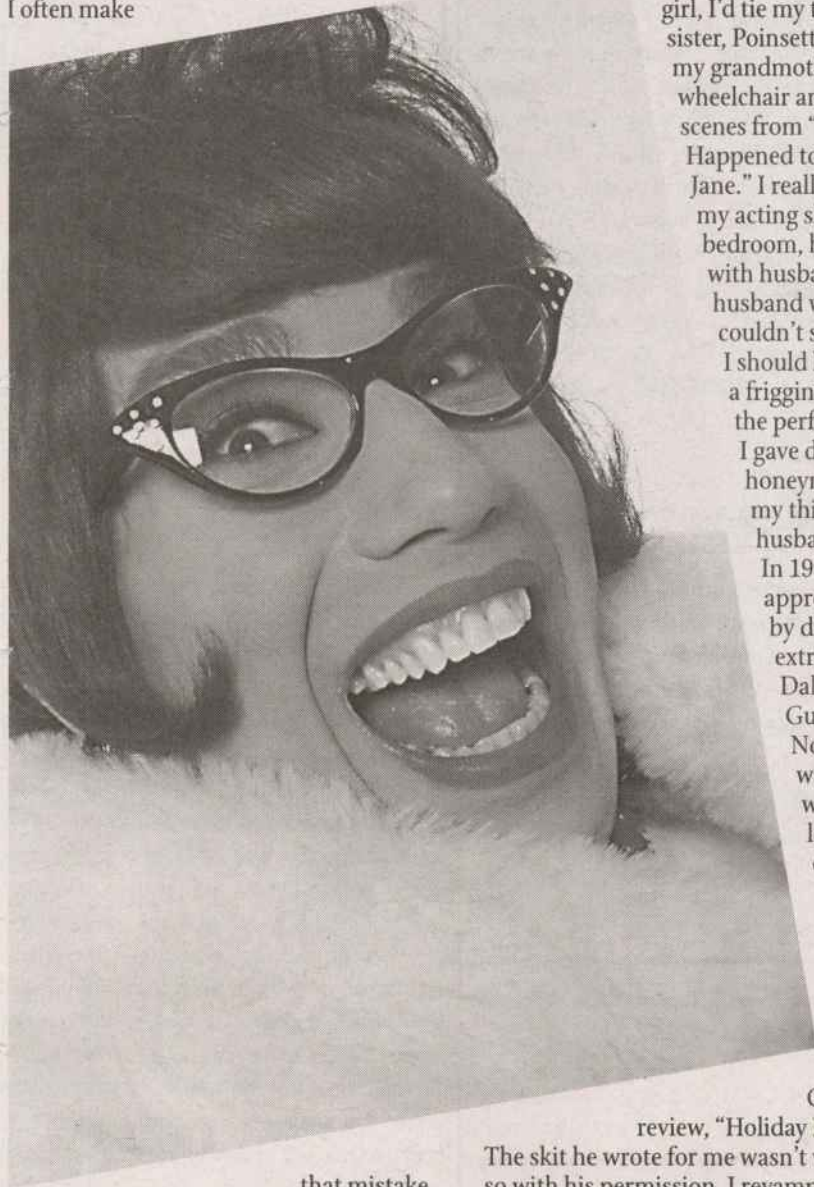
www.damron.com

Confessions From Our Favorite Redhead- "Dear Ruthie"

(My interview between lots of drinks!)

When was RUTHIE first born in Milwaukee?

I wasn't born in Milwaukee. I was born in a mining community...a poor mountain town called Butcher Holler. Daddy loved and raised eight kids on a miner's pay. Momma scrubbed our clothes on a washboard everyday. Oh wait...that's not me...that's Loretta Lynn. I often make



the column to include advice as well as no-fuss recipes which appear in a column titled Ruthie's Bitchin' Kitchen. Now I'm confessing to Q-Life for Ray Bradford!!

How did RUTHIE get interested in doing theater?

I love acting, always have. When I was a girl, I'd tie my twin sister, Poinsettia, into my grandmother's wheelchair and re-enact scenes from "Whatever Happened to Baby Jane." I really polished my acting skills in the bedroom, however, with husband after husband who couldn't satisfy me. I should have won a friggin' Oscar for the performance I gave during my honeymoon with my third ex-husband, Vinnie. In 1999, I was approached by director extraordinaire, Dale Gutzman. No he didn't want to sleep with me, his loss-but he did ask me to appear in his

Christmas review, "Holiday Punch."

The skit he wrote for me wasn't working, so with his permission, I revamped it. I wound up doing my own stand-up comedy instead and it went over very well! I was asked to do stand up at a benefit for Bialystock and Bloom. That led to a role in their production of "Psycho Beach Party," and I've been doing professional theater, and television, ever since. Last year, I was

hired to do my Joan Rivers impersonation as the opening act for New York pop singer Ari Gold at Northern Lights Theater in the Potawatomi casino, and I dressed as Joan in the same room Joan herself uses when performing there!

Any plans to take RUTHIE to L.A or NYC?

Actually, I auditioned in Chicago for the first season of NBC's "America's Got Talent" and was set to fly to LA for the taping. After shooting the first two episodes, however, they realized they were flying out too many acts and I was knocked off the schedule. I actually had a film crew from California come to Milwaukee once to meet me! That was neat-o. Do the kids still say "neat-o"? I was one of 10 that Yahoo! wanted to give a screen test. They flew out here and we shot the test, but Yahoo went with some hick roller-derry queen instead. Her commercial never aired as far as I know. Serves her right for screwing with a big boned redhead.

You are a fan of Charles Busch, and do you keep in touch with him?

I love Charles Busch! I've appeared in four of his plays and will be doing a fifth this summer. We've had some very nice exchanges, but like most men he probably just wanted to get into my panties.

What are your upcoming theater projects?

I thought you'd never friggin' ask! Christ! Why do you think I agreed to this interview in the first place? I'm doing a staged reading of the classic comedy "The Women" as a benefit for RSVP Productions May 17-20. Hmm...you look a little like the guy directing it. Do you know him? Regardless, the show will be at the Astor Theater on Brady St and folks can call 414-272-5694 for tickets. I'm excited because the last readers piece I did was playing Mame Dennis in "Auntie Mame," and I had the best time with it. After that I'll be playing the lead in the Charles Busch comedy "The Lady in Question" at Off the Wall Theater. I worked with that company last year doing, "Die, Mommie, Die!" I'll be working alongside Karl Miller, who I met while doing "Psycho Beach Party". It runs July 19-29. You can call the box office at 414-327-3552 for ticket info.



Q THEATER

Ray lives on the Lake on the East Side. He is artistic director of RSVP Productions at the Astor Theatre. He also directs theater in Whitefish Bay, and works as a free-lance director, and theater teacher. Highlights include working with Lana Turner, and Mickey Rooney.

Any final thoughts before we get too drunk?

I also have a line of clothing and other products on the Internet. You'll find at www.dearruthie.com. Yea, I know that's not a theater project, but tough nuts, buddy! I'm telling ya about it anyway. So go to my Web site and buy my crap. Then take advantage off all the great theater companies in Milwaukee Tell 'em Ruthie sent ya...damnit!

Great Theater and Red-Hot shows!

Chita Rivera stars in her show at the Marcus Center. The Skylight Opera will bring us PATIENCE. A musical STARTING HERE, STARTING NOW plays at In Tandem. A must see is THE INSPECTOR CALLS at the Renaissance Theaterworks. And RSVP Productions presents THE WOMEN. Also please don't miss THE BAKERS WIFE at Windfall Theatre. Community shows in the area are THE IMPORTANCE OF BEING EARNEST at Waukesha Civic; and at Sunset Playhouse FIVE WOMEN WEARING THE SAME DRESS. Wow, after that interview I need another drink. I think I will head out to M'S, and then catch last call at THE HARBOR ROOM.

Last MONTH's Trivia Answer

Bing Crosby and Danny Kaye starred in WHITE CHRISTMAS?

This Month's Trivia Question

Charles Busch has a new play on Broadway—What is it called? Aunt Blanche and Dear Ruthie haven't left M's since that wild interview; and that was over 5 days ago!



Trip Out!

Take America's favorite LGBT travel guides with you!

800/462-6654

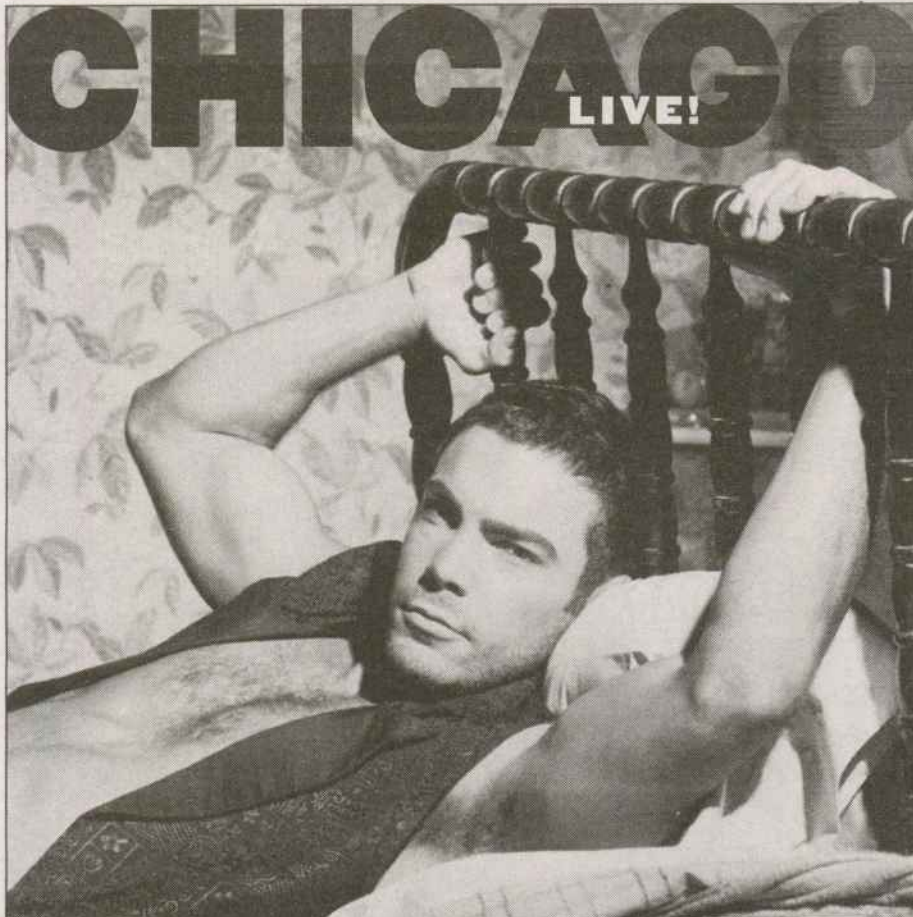
Want more? Get LGBT travel listings, city files, events, tour operators, and more on our website

Call today and ask about Damron Travel Packs:

- 2 Damron guides for \$30
- 3 Damron guides for \$40

www.damron.com

CHICAGO LIVE!



THE MOST WANTED MUSICAL

5 PERFORMANCES!

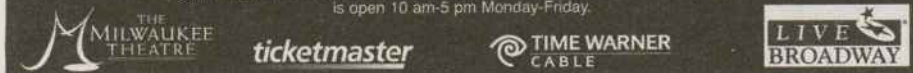
MAY 11-13 · THE MILWAUKEE THEATRE

500 W. Kilbourn Avenue (6th & Kilbourn)

For tickets call **414-276-4545** or visit www.ticketmaster.com

Groups call **414-908-6092** or email mpowell@wcd.org

Also sold at The Milwaukee Theatre Box Office and all Ticketmaster outlets including Boston Stores and select Piggly Wiggly stores. Convenience fees apply. The Milwaukee Theatre Box Office is open 10 am-5 pm Monday-Friday.



Q CLASSIFIEDS

JOB

Writers needed for Milwaukee's gay lifestyles leader. Call 414-383-8200. Send resume to editor@queerlifeneews.com

BULLETIN BOARD

Coffee anyone: Be the first on your block to own a genuine Queer Life coffee mug. Wake up each morning a see the cheerful rainbow logo. Or just stop in and have a cup of coffee with the staff. \$10.00 each or 2 for \$15.00. Pick up only at Q Life News office 2266 N. Prospect Ave. Suite 200. P.S. We like chocolate.

Madison Madtowner in the Know

QLife is looking for a talented in the know writer from the Madison area to cover local events.

Please send writing samples to: editor@queerlifeneews.com

or
Call **414-383-8200**
for
additional
information.



For Sale By Owner

River Hills Farm House
Remodeled Kitchen and Bath
3 Bedroom, 3 Bath
3 Car Garage
Dog Kennel
750 W. Calumet Road
\$399,000
Call Ruth at
414-915-7210

For Rent Bay View

1 Bedroom with small computer room.
Appliances Included
Separate Utilities
Looking for Quiet tenant
1 Off Street Parking Space
\$625 + Security Deposit
Small pet OK
Sue
(414) 384-7113

Q-Classifieds are only \$30 for up to 30 WORDS!

WRITE AD COPY HERE, THEN FAX TO 414-383-5066 or MAIL TO: 2266 N. Prospect Ave, Suite 200 Milwaukee, WI 53202

1 issue is \$30 add 20 cents for each word over

Number of issues ad should run: _____

TOTAL: \$ _____

Payment by: VISA MasterCard Check Money Order

Card # _____

Exp. Date: _____

Name: _____

Phone: _____

Address/City/State/Zip: _____

Signature: _____

E-mail: _____

Signature required for all ads to verify certification of lawful placement, legal age, and credit card authorization. All ads submitted must have all information completed with a verifiable address (no PO box), area code, and verifiable daytime phone. Your phone number may be necessary if some of the information needs clarification. This information is strictly confidential.

Q LIFE will grant credit only for any ad cancellation prior to deadline or errors in ad copy by Q LIFE. There is a \$35 charge for checks returned NSF.

Fax: 414-383-5066 or Mail to: 2266 N. Prospect Ave, Suite 200 Milwaukee, WI 53202 Deadline for Classifieds are the 20th of each month

CIRCLE ONE CATEGORY:

- Accounting
- AIDS/HIV Services
- Antiques
- Automotive
- Bed & Breakfast
- Bulletin Board
- Buy/Sell
- Counseling
- Employment
- Health Services
- Home Repair
- Housing
- Jobs
- Massage
- Model/Entertainer
- Moving
- Pets
- Psychic
- Real Estate
- Resorts
- Roommates
- Services
- Storage
- Travel
- Other





MIDWEST PRIDE MEETS ON MILWAUKEE'S LAKEFRONT

Everyday People
Extraordinary Lives

instinct



JUNE 8, 9 & 10, 2007

The Official Beer of PrideFest



99.1 WMYX

COMEDIAN

KATHY GRIFFIN

Friday, June 8th

Comedian **Kathy Griffin**,
Star of "My Life on the D-List"
and "Suddenly Susan"

Featuring **Cascada**,
"Everytime We Touch"



CASCADA

Saturday, June 9th

Jammin' 98.3 welcomes
Eight-time Grammy Award®
winner **Chaka Khan**

With **Benassi Bros.**
featuring **Dhañy**



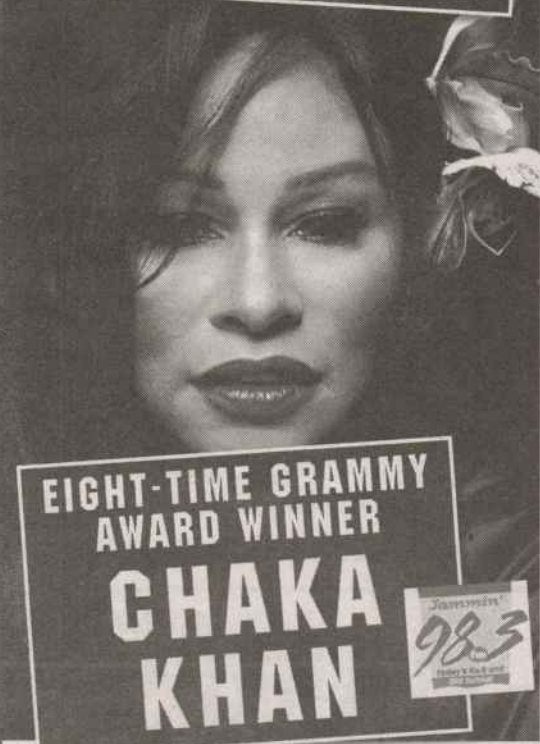
Sunday, June 10th

Joan Jett and the Blackhearts With
Ronnie Nyles and
the **Krash Band**

Singing
"Total Eclipse
of the Heart"
LIVE for
the Sunday
Tea Dance



NICKI FRENCH

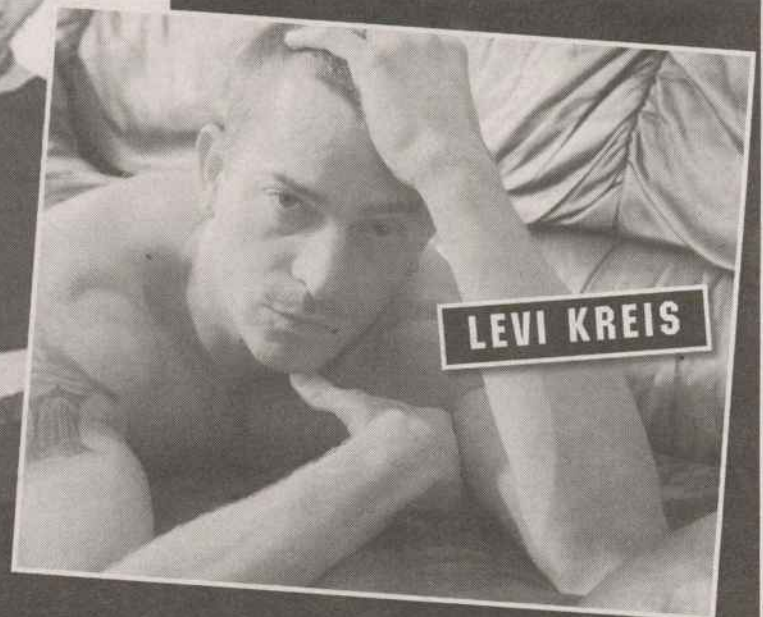


EIGHT-TIME GRAMMY
AWARD WINNER

CHAKA
KHAN



JOAN JETT
AND THE BLACKHEARTS



LEVI KREIS

Discount Tickets on Sale May 8th at pridefest.com

BUY EARLY AND SAVE!

2007 TICKET PRICES:
**Pre-festival Discount
Tickets** (available until
June 7th at pridefest.com)

\$12 = Single Day
\$30 = 3-Day Pass

Blocks of 25 tickets at \$10
each (available online until
May 25th only)

**Festival Weekend Gate
Sales:** June 8, 9 & 10th
\$15 = Single-Day
General Admission

GET IN FREE: 11am - 1pm
Saturday and Sunday with
4 non-perishable food
items for the ARCW Food
Pantry

www.pridefest.com
414 272.3378

GET IN FREE:
1pm - 5pm Sunday with
your Milwaukee Journal
Sentinel Press Card

12 YRS & UNDER: Free
all weekend with parent
or guardian.

OVER 60 PERFORMANCES

- including Hedda Lettuce
- Pride Idol - 7th Annual Leather Show - Catie Curtis - Fireworks - Vickie Shaw - Scott Free - Jason & deMarco - Miss Fozzie - PUMP! DJ Showcase - Ellis - Emily White - Tret Fure - divineMAGgees - Shoreline Milwaukee Dancers - Black Pride Gay Idol - Commitment Ceremony - Peppermint - The Locals - Wind It Up! by Versage Productions - Interfaith Service - Cheer! Dorothy, Cheer! - Dropmore Scarlet - Rachael Sage - Miltown Kings - La Rosa Latino Dance Party - Sade Pendarvis - Julie Loyd - Wisconsin's Diva Review - Pulsation Band - Edie Carey - Boi Toiz and Gurl Toiz on Broadway - Belly Dancing - Whitney Gaytan Latino Drag Show - MGAC Artist Showcase - Much, much more!