

The Pride of Milwaukee

By Lesley Salas

Twenty-five years ago this December, a budding organization held its first fundraiser. Depending on whom you talk to – Warren Breitlow, Don Schwamb, Tony Rhodes or other dedicated volunteer leaders with long memories – the Cream City Foundation netted between \$69 and \$75 at its first event.

The site of the first fundraiser – the This Is It! Bar on Wells Street – became the “home office of the Cream City Foundation,” recalled Tony Rhodes, laughing. “Once we lost the caterer a day before our Casino Night fundraiser,” he said. “I went in the bar screaming that there was no food for our event. Those queens started rattling pans to make food, all donated by them. We ended up with a spread that looked like something from the Pfister.”

The Cream City Foundation was an offshoot of an association of gay and lesbian business owners who realized worthwhile projects starting up in our community were floundering without financial support. The Cream City Business Association Foundation, as it was originally called, set out to raise money quickly and invest it right back into community projects.

By 1995 the Foundation – still with no paid staff – had given out over \$125,000 in project and operating support to address our

issues. In its anniversary year, Cream City Foundation celebrates the more than half a million dollars it has donated to LGBT causes in Milwaukee, Southeast Wisconsin and throughout the state.

Don Schwamb, second president of the Cream City Foundation in the mid-80s, said, “Milwaukee and all of Wisconsin can be rightfully proud. Forming a charitable foundation back in 1982 was an amazingly insightful thing for Milwaukee’s gay and lesbian community to do.”

So what has the Cream City Foundation been doing the past 25 years? It’s hard to find an aspect of our community that the Foundation hasn’t touched.

In the early 80s the focus was on addressing the devastating AIDS crisis – CCF was there to help the Milwaukee AIDS Project (now ARCW) and the BESTD Clinic. Such diverse groups as Lesbian Alliance, the Cream City Chorus, the film festival and PrideFest have gotten off the ground with CCF support. The Foundation was also the original fiscal agent for the Milwaukee LGBT Community Center. A grant to send Eldon Murray to a national Seniors in a Gay Environment conference led to the creation of our local SAGE group for aging community members.

CONTINUED ON PAGE 4

COMMUNITY CALENDAR**APRIL 1**

All Fool's Day Celebration Sunday, 5-9 pm. Milwaukee LGBT Community Center, 315 W Court St. Hosted by Positive Directions Milwaukee. Buffet & Beverages. \$5.00 Donation. All proceeds benefit The Galano Club.

Depression Support Group at 2pm. Broad Vocabulary, 2241 S. Kinnickinnic Ave. Led by Amy Kistner, MS, members suffering with depression (or have loved ones who are) will provide support and a network for each other. All are welcome to attend. Drop in any meeting. Call 414-744-8384 for more information. Repeats April 15th.

APRIL 4

Garden Lecture Series at the Villa Terrace Decorative Arts Museum, 7 p.m. Container Gardening for the 21st Century. Dennis Buettner, FASLA, Buettner & Associates, Inc. Container gardens can be fun, festive, fashionable, futuristic and much much more! Club Member: \$10 per lecture. Non-members: \$12 per lecture. Information: 414-271-3656. Make checks payable to Friends of Villa Terrace, 2220 N. Terrace Ave., Milwaukee, WI 53202.

APRIL 9

Bay View Arts Guild Elections* and Social. Lulu Cafe & Bar, 2265 S. Howell Av. Members will vote on a slate of officers. Membership is open to the public as well as artists in all media. Discover what the Guild has planned for 2007. 6:30pm. Info:Linda Beckstrom, Secretary, 414-482-1543

APRIL 10

Lesbian Reading Group at Outwords. Meets every 2nd Tuesday of the month at 7pm. Everyone welcome. Meets at Outwords Bookstore, 2710 N. Murray Ave. Call 414-963-9089 for this months reading selection or to confirm meeting date.

APRIL 11

BESTD Clinic Outreach at Midtown Spa (Milwaukee) 6-9pm Free 30 minute HIV testing.

APRIL 15

SAGE Women's Drop In Night. Third Sunday of the month at 6 pm. SAGE/Milwaukee offices, 1845 N Farwell Ave, Suite 220. This meeting is a social gathering for any women who like to discuss "issues" that are affecting our lives. Come to share, sing, celebrate, eat (bring a treat) or just listen and get to know each other. All women welcome!

APRIL 18

The Day of Silence is an annual event held to commemorate and protest anti-LGBT bullying, harassment and discrimination in schools. Students and teachers nationwide will observe the day in silence to echo the silence that LGBT and ally students face everyday. In it's 11th year, the Day of Silence is one of the largest student-led actions in the country.

APRIL 21

Make A Promise. A gala dinner and silent auction, dinner/cocktails, and live entertainment. - 'Cause you can can...join the AIDS Resource Center of Wisconsin for an evening of entertainment and delight, Parisian style! Moulin Rouge at Make A Promise 2007 Midwest Airlines Center. All proceeds from the event benefit the prevention, care, and treatment programs to people affected by HIV/AIDS throughout the state. Attire for the evening is black tie optional. The Midwest Airlines Center, 400 W. Wisconsin Avenue. Doors Open at 5:30PM. Info: (414) 225-1598

APRIL 22

Happy Earth Day to YOU.

APRIL 24

BESTD Clinic Outreach at Midtown Spa (Milwaukee) 6-9pm Free 30 minute HIV testing.

APRIL 27

April is Sexual Assault Awareness month. Join community groups from throughout the state as they gather for networking and information sharing. Italian Community Center, 8am-1pm. \$10. For more information, please contact Meighan Bentz at 414-271-2656 Ext. 123

APRIL 28

WI Rainbow Alliance of the Deaf. Every 4th Saturday, 6:30-10pm. Contact Suzette at sgaray@uwm.edu or Jake at jakestercool@2way.net for more information

Deadline for the May Calendar of events is April 19th.

Sick and Tired *of being*

Sick and Tired?

**Then check out the Galano Club of Milwaukee...
a 12-Step recovery club for LGBT people!**

Meeting Schedule:

Alcoholics Anonymous

Sunday: 10:30am & 7:00pm

Monday: 7:30pm

Tuesday: 5:30pm

Wednesday: 7:00pm

Thursday: 7:00pm

Friday: 7:00pm

Saturday: 6:30pm (*women's meeting*) & 7:30pm

Narcotics Anonymous

Friday: 7:00pm

Sexual Compulsives Anonymous

Sunday: 6:30pm

Tuesday: 7:00pm

Thursday: 7:00pm

Al-Anon

Sunday: 10:30am

315 W. Court Street, 2nd Floor

Milwaukee, WI 53212

Phone: 414-276-6936

Email: mail@galanoclub.org

Website: www.galanoclub.org

Q Spotlight:

Images of Us Sports Brings the WNBA to Milwaukee

This May, Images of Us (IOU) Sports will bring the WNBA to Milwaukee. On May 4th, 2007 the Chicago Sky will play the Washington Mystics, at 7pm at the Al McGuire Center on the Marquette University Campus.

Established in 2000, IOU Sports is a grassroots, non-membership non-profit organization with the mission to provide sports education, fitness opportunities, career information, and charitable assistance to girls and women who participate in all levels of sports. Their goal is to empower girls using sports as an avenue that instills discipline, teamwork and physical fitness to create well-rounded individuals and to provide a unique cultural, educational, and athletic experience for girls and women. IOU Sports does this through seminars, workshops, reading programs, and other educational events focused on women and sports. They also hold instructional camps and clinics that feature local and national women sports leaders to provide examples and show the true meaning of role models to young girls. Their motto is "To Share, Educate, and Empower Girls and Women Through Education and Sports."

For more information on the WNBA game or IOU Sports, contact Bernell Hooker at 414-393-0773, or email: info@iousports.org.

Tickets cost ten dollars and are available at Ticketmaster locations, or by calling 276-4545.

CONTENTS

Vol. 3 Issue 4 • April 2007

- 6 **Q Local Happenings**
- 7 **Q National Happenings**
- 7 **Q International Happenings**
- 8 **Q Parenting:** Eight Straight Demands a Q!
- 9 **Q Editorial:** Every Person has the Inalienable Right to a Decent Environment
- 9 **QLife Quickies**
- 10 **Q Music Review:** Pabst Theatre Ready to Rock
- 10 **Q Zines:** Get Yer Freak On!
- 11 1969 Dykesploitation Classic comes to Milwaukee
- 11 **Q Politics:** Straight Talk for Business
- 13 **Q Religion:** Beliving the Resurrection
- 14 **Q Fitness:** Do Not Let Your Body Starve All Day
- 15 **Q Health:** Getting Ready
- 16 **Q Transgender:** An Unlikely Pair
- 18 **Q Decorating:** The Greening of America
- 19 **Q Movie Review:** The Einstein of Sex
- 20 **Q Women:** Celebrating Community Organizations
- 21 **Arts Calendar:** April
- 22 **Q Theater:** Variety is the Spice of Life
- 23 **La Page Folle:** Crossword
- 23 **Q Cooking:** Summer Start with Peach Cobbler

Help The Milw. LGBT History Project in Search

The Milw LGBT History Project is urgently seeking local gay/lesbian publications from the late 1970s to mid 1980s. ANY issue, even single issues, of any of the following publications are urgently sought:

Escape (small publication/ bar rag, printed from about 1978 to 1983)

OUT! newspaper (printed from about late 1982 to about 1987)

Our Horizons (published for about a year in 1981)

RAGG (another small publication/ bar rag from about 1983-1984)

Any other local LGBT publication prior to 1985 other than GPU News (G-Milwaukee, GLIB, Milw Calendar, Milw Gay Guide, etc.)

The missing publications did not submit any copies to any library, and

the Milw.LGBT History project has determined that there are no libraries with more than 1 or 2 single issues.

Locating copies of these publications is necessary to fill a crucial gap in our documented history (prior to when In Step and Wisconsin Light began publishing) and they need to locate them as soon as possible.

PLEASE help them out by searching your attics and bookshelves for any of these issues – even if it's just a single issue. They will scan and return any issues, or will permanently preserve them as part of the UWM Special Collections (preserved in your name) Call the SAGE offices at 414-224-0517 and talk to Bill Serpe if you have any of these issues.

CREAM CITY FOUNDATION HISTORY: NOT IN MY WORKPLACE!

9to5, National Association of Working Women works to strengthen women's ability to work for economic justice. In 1996, The Cream City Foundation assisted 9to5 with the organization of a "Not in My Work Place" campaign, which educated women on addressing homophobia and hetero-sexism in the workplace and their effect on workers.

Today, **Cream City Foundation** continues to support the advancement of women by assisting organizations such as the Lesbian Alliance and the League of Women Voters.



25 YRS

CREAM
CITY
FOUNDATION

414.225.0244

www.creamcityfoundation.org
315 W. Court Street, Suite 201B
Milwaukee, WI 53212

WRITERS WANTED

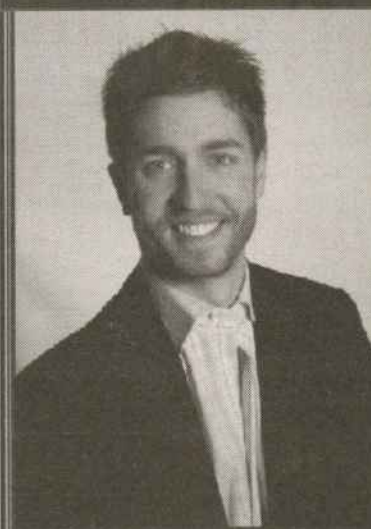
QLife is a monthly publication that celebrates Wisconsin's diverse population with boldness and class. Be part of the QLife family and share your talents with the community.

Columnists needed for the following:

- **Q Clubbing** • **Q Sports**
- **Q???? suggestions**



Send your writing samples to
Editor@Queerlifeneews.com.



WE HAVE MORTGAGES FOR
EVERYONE'S NEEDS!

- Home Purchases.
- Refinances.
- Investment Properties.
- Commercial Properties.
- Debt Consolidation.
- Bankruptcy.
- Foreclosures.
- Stated Income Loans.
- Cash out for ANY REASON!!!

ASAP FINANCIAL, LLC

Call us today at:

414-289-8368

OR

877-641-ASAP

www.asapfinancial.net

207 E. Buffalo Street Suite 508
Milwaukee, WI 53202



CREAM CITY *continued from page 1*

Through the years the Foundation has supported Lesbians of Color and the UJIMA organization, the FORGE F-t-M trans group, a variety of youth initiatives, softball and bowling leagues, local queer TV, Rainbow Families, the Creating Change national conference and Charles D's AIDS education outreach at the bars, to name a few. If you've been out anywhere in this community, you have felt the impact of Cream City Foundation. You can read about CCF's impressive accomplishments at www.mkelgbthist.org (another project the Foundation has funded).

CCF has helped us become stronger and more visible. Whether it's facilitating a meeting with Mayor Norquist (late 80s), orchestrating a 'Cream City Foundation Day' city proclamation by Tom Barrett (2007) or countering excessive bar raids with "Know Your Rights" cards (1991), the Foundation has been in Milwaukee's face with LGBT pride. A 30-minute documentary on gay and lesbian youth, also funded by CCF, became a breakthrough national hit, establishing PBS as a broadcaster of solid LGBT programming for the first time.

In fact, visibility is one of the criteria for choosing projects to fund. "We want every LGBT person to get to the point of having a voice as a citizen of Milwaukee," said current CCF Executive Director Maria Cadenas. In her first two years of leadership, Cadenas has proven to be a dynamic community catalyst. Her vision is to move from being a funder of immediate needs to become a force for social change that galvanizes the community through partnerships. "We have a different view of the community than other organizations, a bird's-eye-view of the whole picture," she explained.

The Foundation's collaboration with the straight community, starting with the use of Edrick's Moving and Storage boardroom for the Foundation's first meeting, continues strong today. CCF joined with the Greater Milwaukee Foundation to successfully raise \$200,000 from straight allies, all matched by Funders for Lesbian and Gay Issues (FLGI). The annual 'My Best Friend is Straight' fundraiser each July continues to garner support from the greater Milwaukee community.

The Foundation's assets could multiply quickly in the next year. Recently the Foundation received seed money to create a fund devoted to youth projects. "The first \$10,000 we raise will be matched at a two-to-one rate by the FLGI + ADAM Queer Youth Initiative," said Cadenas. "Additional gifts will be matched one-to-one up to \$22,500. Also, during the month of April, our Board has pledged to match every dollar donated up to \$15,000." In other words, every dollar donated to the youth fund this month automatically becomes four dollars.

"CCF continues to encourage increased giving to the LGBT community. Each grant cycle, we receive many more requests for funding than we are able to grant. Too many people in the community think nothing of dropping \$20 one or more nights a week at bars and clubs. Yet they never give a dollar or an hour of their volunteer time to the many deserving organizations and causes that make us a whole community."

Don Schwamb

There have been some spectacular individual gifts to CCF, most recently \$40,000 from Joseph Pabst, \$150,000 from Warren Breitlow and \$200,000 from Robert Starshak and Ross Draegert. "But the small donors are our bread and butter," Cadenas declared. "For every donor who gives \$10,000 or more, there are hundreds of regular people in the community giving 25, 50, even five dollars at a time."

Tony Rhodes added, "You know, these people giving one and three and five thousand dollars aren't rich, either. They are just showing their commitment."

Cadenas wants to double her current donor base of about 300, a third of whom are female, during her tenure. "Last year Marianne Ketterer became the first woman donor to give \$10,000," stated Cadenas, who hopes to see other women follow Ketterer's lead.

"The only way we grow and function as a community is if we share and support each other," Cadenas affirmed. "That means everyone. We don't have the luxury of being selfish. At the end of the day, we are all working for the same thing

— a better and more equal community."

Call the Foundation at (414) 225-0244 for more information or to make a donation.

Cream City Foundation History Timeline

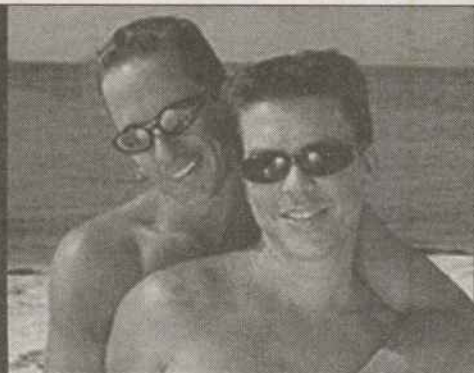
- 1982 Founded with a \$500 gift from Ed Jaworski.
- 1983 Funded a Community AIDS Forum and created an AIDS field of interest fund.
- 1984 Granted funds for statewide Conference for Lesbian and Gay student organizations.
- 1985 Developed and distributed rights card to aid LGBT individuals in case of arrest.
- 1986 Co-founded ARCW (formally Milwaukee AIDS Project) and distributed first grant to its efforts.
- 1987 Funded the creation of LGBT Cable Network in the area — Tri-Cable Tonight.
- 1988 Created the Foundation Community Center. Center later closed with the Foundation's move to new offices.
- 1989 Hosted a milestone meeting with the newly elected Mayor of Milwaukee, John Norquist.
- 1992 Sponsored PBS Channel 10/36 shows relating to LGBT issues.
- 1993 Funded the acquisition of LGBT materials for Milwaukee's public libraries.
- 1994 Sponsored Team Wisconsin for the Gay Games in New York City.
- 1995 Funded workshops to address issues of lesbians of color.
- 1996 Sponsored LGBT Film/Video Festival for the 5th consecutive year.
- 1997 Start-up funds for HIV prevention to gay and bisexual men in small towns in rural Wisconsin through ARCW.
- 1999 Sponsored "Village Elders: Portraits and Stories" showcasing LGBT elders.
- 2000 Hired Executive Director.
- 2001 Provided start up costs for improvements in public policy and legislation toward LGBT people.
- 2002 Established Milwaukee LGBT Funding Partnership in collaboration with the Greater Milwaukee Foundation.
- 2003 Provided organizational and financial support to pull PrideFest out of immediate bankruptcy.
- 2006 Funded over \$200,000 to help fight Constitutional amendment.

We continue to be the first, and many times the only, source of funding for emerging LGBT needs and organizations.

Carnival Travel

790 N. Milwaukee St.
Milwaukee, WI 53202
414-276-3388

or email us:
travel@carnivaltravel.net



**Downtown Milwaukee's
premier travel agency**

*Personalized Travel Planning
one client at a time!*



THE EDGE

a fresh architectural option
to residential living

- Bamboo flooring
- Contemporary cabinetry
- **GROHE** plumbing fixtures
- Floor to ceiling windows
- Stainless steel appliances
- Private riverfront patios

Pre-Construction Pricing Starting Under \$200,000



(414) 263-Edge • www.EdgeCondos.com

New Riverfront Condominiums
1890 N. Commerce Street



Exclusively Marketed By Roberta Van Duyse

Wisconsin



Happenings

NEW Chair of ARCW Board of Directors

Milwaukee - Dan Riedl, a Vice President at Northwestern Mutual in Milwaukee, has been elected Chair of the Board of Directors of the AIDS Resource Center of Wisconsin (ARCW). Riedl has served on the ARCW Board of Directors over the past five years providing policy leadership to the statewide HIV health and social service agency.

"I am very enthused by the opportunity to offer leadership to an outstanding agency that is so important to winning the fight against AIDS," said Riedl. "We are a mission driven agency at the forefront of HIV prevention, care and treatment. In an era of AIDS when quality health care can mean a long and healthy life for people with HIV disease, we are determined to make sure that everyone gets the health care they need."

Riedl begins his term as Board Chair at a time when the ARCW Medical Center has emerged as Wisconsin's largest provider of HIV medical, dental and mental health care services. More than 1,240 HIV patients receive health care services at the ARCW Medical Center.

The ARCW Board of Directors also elected Richard Olds, M.D., FACP, Chairman of the Department of Medicine at the Medical College of Wisconsin and Sharon Resch, a community volunteer and philanthropist from Green Bay, to the Board of Directors.

George Webb Attacker Pleads Guilty

Milwaukee - A 26-year-old Milwaukee man pleaded guilty to two to battery and felony bail jumping charges stemming from a September altercation at a George Webb restaurant that included a rant about homosexuality and gay marriage.

Jason Graham, of the 4800 block of N. Sherman Blvd., is to be sentenced April 25 by Circuit Judge Mel Flanagan for his felony convictions of substantial battery and bail jumping, but prosecutors have not made a specific recommendation on how much prison time he should face. The fight happened at the George Webb at 6108 W. Blue Mound Road hours before dawn Sept. 24, and according to police, included punching, yelling and tossing chairs.

Call for Artists Be on the Cover of QLife

QLife is currently seeking artist submissions for the cover of our June Pride Issue. Please send high res. pdf, or jpeg, along with dimensions, media, artist's name and a brief bio (200 words or less) to editor@queerlifeneews.com. Photography, paintings, graphic design all welcome. Top pick will grace the Qlife cover, and receive two tickets to PrideFest. Deadline to receive submissions is May 4th. Submission automatically grants Qlife the right to publish. Questions, info: 414-383-8200

Also seeking community input on "labels in the community" What do you call yourself? What do you HATE to be called? Are you "Queer? Gay? Bi? Str8-acting? Dyke? Queen? Bean, Lesbo, Twink, Butch, Femme, Top, Bottom? Why do we use them? Let us know in a short note to editor@queerlifeneews.com. We will be posting some of the answers in the June issue of Qlife. Please submit by May 4th.

Gay Rugby 101 a Success

Madison - Madison's first Gay Rugby Team had an amazing turnout for their first ever Rugby 101 on Saturday, March 10. One player from the Minneapolis Mayhem and 7 players from the Chicago Dragons were greeted by 23 men from in and around Madison who were interested in learning and playing Rugby.

The ages of players ranged from 18 to mid 40's and most had never played Rugby before. There are currently 50 people on the roster, men and women, who expressed interest in playing or supporting a Madison Gay Rugby team. Although all the players on the team are male, they encourage any women who want to learn how to play the sport to come out and practice.

For more information on other International Gay Rugby teams, you can visit the International Gay Rugby Association and Board at www.IGRAB.net. For more information please contact Jeremy Holiday at Jeremy.holiday@gmail.com or Shawn Neal at sneal04@yahoo.com.

Two Females wed in Milwaukee

Milwaukee - A transsexual married a woman March 23rd, at the Milwaukee County Courthouse.

Barbara Lynn Terry, 58, was born as a man, Ronald Terry. Terry considers herself a female, but after speaking to a doctor, Milwaukee County Circuit Court Judge David Hansher determined that Terry is still physically a man. Therefore, Hansher said, there was no legal reason not to marry the couple.

"However, if he had wished to marry a man, the court would have decided otherwise and refused to marry them since this would be an invalid same-sex marriage under the law," Hansher said in the statement he issued. Terry married 22-year-old Australian Nicole Winstanley. There have been similar cases in a handful of states across the nation, according to New York Law School professor Arthur Leonard, an expert in sexual-orientation law. Milwaukee County Clerk Mark Ryan said the license was issued because they showed documents stating that Terry was a male and Winstanley was a female.

Medical College of Wisconsin Partnership Awards Totaling \$7 Million

Medical College of Wisconsin's Board of Trustees approved awards totaling \$7,037,486 in support of 29 community/academic partnership projects statewide through the College's Healthier Wisconsin Partnership Program (HWPP).

This public and community health initiative was created through funds awarded to the Medical College as a result of Blue Cross and Blue Shield United of Wisconsin's conversion to a publicly-traded company. A total of seventy-three community-based organizations in Wisconsin will participate in the 29 projects.

The awarded projects address major health problems in Wisconsin including: access to health care, high risk sexual behavior, injury prevention, mental

health, nutrition, obesity and physical fitness, oral health, substance abuse

"The 29 projects supported through HWPP address major health problems with the potential to affect every citizen

in our state from every segment of society," said T. Michael Bolger, J.D., President and CEO of the Medical College. "We are proud to be partnering with the 73 organizations statewide that share our vision for a healthier Wisconsin."

Fourteen of the projects are Impact projects and 15 are Development projects. Impact Projects, focused on health promotion and disease prevention, received a total of \$6,294,805 to implement major health initiatives. The Development Projects received a total of \$742,681 to develop health initiatives or partnerships.



BLACK & WHITE
FINE ART
PHOTOGRAPHY
FROM
MARYGERGER.COM
NOW ON EXHIBIT
AT
MO'S CAFÉ
IN KENOSHA
5537 6TH AVE
WINTER HOURS
6:30 AM - 5:00 PM
MOSLOUNGE.COM

affordable graphic design | specializing in non-profits | expert DTP software instruction



www.mmkdesign.com
414.688.9635

2821 N 4th Street #532
Milwaukee, WI 53212

National



Happenings

Military Calls Homosexuality Immoral

Santa Barbara, Ca - After Marine Gen. Peter Pace, the Chairman of the Joint Chiefs of Staff, called homosexuality "immoral" and likened it to adultery, military analysts said his comment suggests the armed forces have run out of rationales for banning known gays from service.

"This might be the beginning of the end," said Aaron Belkin, Director of the Palm Center. Belkin, whose research center studies "don't ask, don't tell," said that returning to talk of morality showed the absence of military rationales for the gay ban at a time when capable gay soldiers are being replaced by drug abusers, felons and high school drop-outs.

The number of convicted felons who enlisted in the U.S. military nearly doubled in the past three years under the moral waiver program which enlists those who otherwise would not qualify due to poor behavior. "I believe homosexual acts between two individuals are immoral and that we should not condone immoral acts," Pace told the Chicago Tribune.

The military relies on its estimated 65,000 gay troops for its deployment obligations around the world. "To say you disapprove of their presence while you depend on their service, doesn't strike most Americans as particularly fair or reasonable." He added: "the hypocrisy is even stronger when you realize the military let in 1600 convicted felons under the moral waiver program last year, but Pace wants to draw the line at gays."

"When military leaders need the talent, skills and qualifications of gay personnel, dismissals decline. During peacetime, the dismissal rate climbs again. The Pentagon's own data shows that, during times of war, when unit cohesion is most important, fewer gay troops are dismissed. The ban on their service, and not their service itself, is what erodes cohesion most."

Pastor ready to Change babies still in Womb

Louisville - In March, the Rev. R. Albert Mohler Jr., president of the Southern Baptist Theological Seminary in Louisville, KY, reported on his website that scientific research "points to some level of biological causation" for homosexuality. The article carried a long but intriguing title: "Is Your Baby Gay? What If You Could Know? What If You Could Do Something About It?" Mohler began advising his Christian readership that they should brace for the possibility that a biological basis for homosexuality may be proven. He went on to say that it would not alter the Bible's condemnation of homosexuality, but said the discovery would be "of great pastoral significance, allowing for a greater understanding of why certain persons struggle with these particular sexual temptations."

Such proof would challenge the belief of many conservative Christians that homosexuality - which they view as sinful - is a matter of choice that can be overcome through prayer and counseling.

Gay-rights supporters were upset by his assertion that homosexuality would remain a sin even if it were biologically based, and by his support for possible medical treatment that could switch an unborn gay baby's sexual orientation to heterosexual. Some have likened him to Josef Mengele, the Nazi doctor notorious for death-camp experimentation.

Mohler said he would strongly oppose any move to encourage abortion or genetic manipulation of fetuses on grounds of sexual orientation, but he would endorse prenatal hormonal treatment - if such a technology were developed - to reverse homosexuality.

"I realize this sounds very offensive to homosexuals, but it's the only way a Christian can look at it," Mohler said."

Increasing Awareness and Understanding

MILWAUKEE - The Greater Milwaukee Foundation and Cream City Foundation are soliciting applications for funding through the Milwaukee LGBT Funding Partnership. Created through a match funding opportunity offered by the National Lesbian and Gay Community Funding Partnership, the mission of the fund is to expand awareness and funding of programs that benefit the lesbian, gay, bisexual and transgender communities. The goals of the Milwaukee LGBT Funding Partnership are:

- To fund projects that foster acceptance and ensure the equal rights of and opportunities for all LGBT people.
- To increase awareness and understanding of the LGBT community.

- To expand resources and programs available to serve the unique needs of the LGBT people.

- To build capacity and collaboration between LGBT groups and the community at large.

To accomplish these goals, the fund is promoting its second annual funding cycle and will be accepting proposals from two groups: LGBT/Mainstream community collaborations and established LGBT organizations. Applications for funding are due on May 1, 2007. Funding announcements for this year will be made by July 1, 2007. Individuals who have any questions, are asked to contact the Cream City Foundation at 414.225.0244 or director@creamcityfoundation.org

International



Happenings

Gay Pastor Granted Ministry

Norway - Bishop Ole Christian Kvarme of Oslo, Norway, has finally backed down from his conservative stance, and will grant a ministry to a pastor who is living in a gay partnership.

Bishop Kvarme's earlier decision to deny Pastor Svein G. Josefsen the position sparked a bit of a debate, since both Crown Prince Haakon, and Crown Princess Mette-Marit are active supporters of gay rights.

As the families official pastor, Kvarme is exempt from public criticism stemming from the royal family.

The royals regularly promote a society that includes all aspects of the population. "It's therefore a dilemma when the royal family's official pastor has a completely view than they do," said Professor Knut Lundby from the University of Oslo.

Norwegian law forbids employment discrimination on the basis of sexual preference.

After a meeting of a state church council, both Kvarme and the council itself apologized for the "unease and despair" that the issue had caused, and announced that Josefsen would get the job he'd earlier been denied.

"I was very glad to hear that," said Josefsen "It's a great joy for me, and for my partner, and for the many others who have expressed their support."

Philippine Police warned against Hip Swaying

Manila - Gay officers in the Philippine police service have been warned against displaying any "unbecoming" conduct. Police spokesperson chief superintendent Samuel Pagdilao said gays in the police could be fired if they "sway their hips while marching" or "engage in lustful conduct."

"The Philippine national police does not have a policy that discriminates against gays and lesbians. In short, all its policies are issued for everybody regardless of sex or creed," Pagdilao said.

But he warned that "being a uniformed service, there are rules of conduct that apply to everybody for which violations may result in administrative charges.

Danton Remoto, of Ang Ladlad, a gay and lesbian group, said the remarks "deepened the stereotype of gay men. His remarks will only force gay policemen back into the closet," he said.



PASSINGS

Eldon Murray

Gay Leader

MILWAUKEE - A true pioneer in the Gay civil rights movement, Eldon Murray helped start the Gay People's Union, the Milwaukee Aids Project (which became the AIDS Resource Center of Wisconsin,) and Senior Action for a Gay Environment (SAGE) Milwaukee. He passed away in the early morning of March 5, 2007.

Murray provided many years of volunteer service to seniors in the lesbian, gay, bisexual and transgender community, and was a gay activist since the beginning of the Gay Liberation Movement. He



Eldon Murray

is nationally recognized as a pioneer in that movement. He was one of the founders of the Gay People's Union (GPU), the first major gay liberation organization in Milwaukee. In 1994, he founded SAGE in Milwaukee which was Wisconsin's first organization devoted to issues surrounding aging in the community. Mr. Murray has received numerous

awards and recognition for his efforts in the gay community, such as the Pridefest's Stonewall Award for outstanding service to Milwaukee's gay and lesbian community and the Human Rights League's Cream City Brick Award. He was elected to the Cream City Business Association's Gay and Lesbian Hall of Fame in 1986. In 1998, the One Institute and International Gay and Lesbian Archives honored Eldon as one of 31 pioneers in the gay movement.

The dedication of his life to activism and service on the part of the gay and lesbian population has clearly benefited the Milwaukee community. He is survived by a brother and nephews and nieces. Memorials should be sent to the Eldon Murray Foundation c/o the Greater Milwaukee Foundation, 1020 N. Broadway, Milwaukee, WI 53202.



Milwaukee

Social worker programs funded by the Department on Aging and Potawatomi Community Foundation

1845 N Farwell Avenue, Suite 220
Milwaukee, WI 53202
414-224-0517

Email: director@sagemilwaukee.org • www.sagemilwaukee.org

AFRAID? UNSURE? WE CAN HELP.

HAVE YOU EXPERIENCED SEXUAL VIOLENCE?



Milwaukee LGBT Community Center

THE ANTI VIOLENCE PROJECT
315 W. Court St. | Milwaukee, WI 53212
(414) 271 2656 | www.mkelgbt.org

MEN'S VOICES MILWAUKEE PRESENTS

Mostly Love

"Listen to Your Heart"

KEN MCMONAGLE, ARTISTIC DIRECTOR

Saturday
June 2, 2007
8:00 p.m.

HELENE ZELAZO
CENTER
UW-MILWAUKEE
2419 E. KENWOOD BLVD.

Tickets: \$15 advance, \$20 door

*15 WITH DONATION OF FOUR NON-PERISHABLE FOOD ITEMS TO THE HUNGER TASK FORCE

AVAILABLE FROM MVM AND THE ZELAZO CENTER BOX OFFICE:

(414) 229-4308



GROUP RATES AVAILABLE AND MAJOR CREDIT CARDS ACCEPTED

Eight Straight Demands a Q!

A co-worker is planning a wedding. Every detail spurs animated discussions about bridesmaids and groomsmen, dresses and tuxedos, cakes, flowers, vows and honeymoon suites. Another hetero couple is having a baby. They learned it's a girl, thanks to the technology of ultrasound and they just about turned pink with all of the talk of nursery décor and designer baby togs. Showers, "old wives' tale" predictions, folklore, traditions, gifts, wishes, hope and dreams; it's a hetero world and frankly, I could scream.

It's not that I don't share happiness and hope dreams come true, it's just that so many loving people have their hopes hushed and their dreams denied because they are LGBT. Their major life events, like coming out, commitment ceremonies, parenthood decisions and first drag shows are too often excluded from discussions or met with a blank stare.

This exclusionary talk tugs the heartstrings of MAMA-Q as I think of all of those who feel left out. "Belongingness" is an essential human need, not a hetero privilege.

Teachers, counselors, parents, healthcare professionals, store clerks, co-workers, EVERYBODY, LISTEN UP! If you choose your words wisely, you could be saving lives. As you refer to major celebrations or everyday life events, try this gauge for your utterances: Eight straight demands a Q. That is, for every eight references you make, include at least one LGBT-Q example. The human family includes roughly 10% LGBT members. Our words should reflect this.

For example, if your office talk references hetero wedding and births, mention your friend and her female partner who are expecting a child. Bring in a cake for National Coming Out Day or maybe a dish of rainbow-colored candies. Math teachers; your story problems can compare the % of two dad families in various decades or involve computations of distances between LGBT sites and the Q-Life office. History buffs can reference Queen's Day (Amsterdam 4-30) Stonewall 6-29-69 or Lawrence v. Texas 6-29-03. Get it? Most of us can find ways to include LGBT references and facts into our daily lives if we act with more thoughtfulness and intentionality. The rule of EIGHT STRAIGHT



PARENTING

Cyndie Ody-Weis (MAMAQLN@yahoo.com) is mom to two daughters and a son, all of whom date men. Cyndie is an active PFLAG member, college teacher and freelance writer, whose works have been published in *Roots and Wings*, *Adoptive Families*, *Adoptalk*, *Faithwriters* and *Advocate.com*.

DEMANDS A Q can be a starting point toward thoughtful integration of all of the world's people.

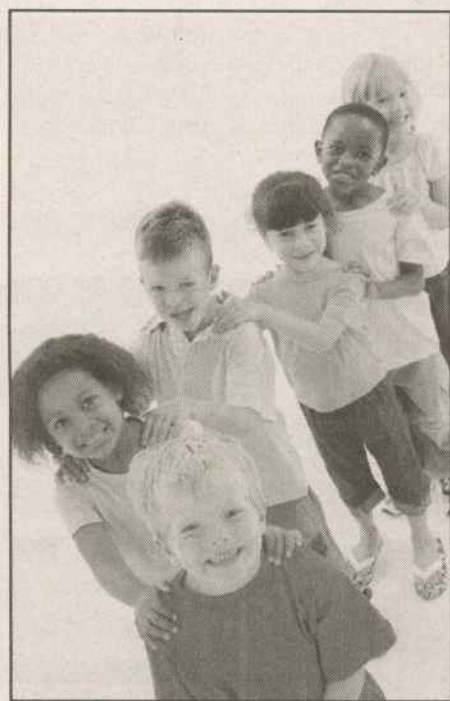
As you progress on journeys to greater inclusiveness, think before speaking. Your words affect your thoughts just as your thoughts shape your words. Examining attitudes and weighing words doesn't happen overnight. Be patient; small steps pave the way to inclusive vocabulary and more colorful rainbows of thoughts.

Displaying diverse coffee table books or magazines and hanging art work with same gender couples and families can help you on your journey to inclusiveness and remind you of your goal. A rainbow bumper sticker, a diversity poster or even a small GLSEN logo reminds you and informs others that welcoming words are the expectation.

If these suggestions seem trivial or take too much time, contemplate the last time you were involved in a social setting where conversations excluded you, your family or your interests. Imagine that all of the references were about places where you were not welcome or about people who had shunned you. Capture the feeling of not belonging. It hurts.

Consider: Our LGBT youth commit suicide at three times the rate of other youth. They endure pejorative comments many times per hour and are bullied at alarming rates. Those who make it through and become stronger often cite ONE SIGNIFICANT ADULT, one ally or one comment that builds strength within.

Enough said.



Working in partnership with the Bureau of Milwaukee Child Welfare

There is more than one way to become a parent.

You can parent a child on a temporary basis through foster care or become a parent for life through adoption.



Children's Service
Society of Wisconsin™

A member of Children's Hospital and Health System.

To learn more about becoming a foster or adoptive parent, call:

(414) 264-KIDS

Children's Service Society of Wisconsin does not discriminate on the basis of age, sex, race, color, creed, sexual orientation, national origin or handicap.



QUEER LIFE

2266 N. Prospect Ave. Suite 200
Milwaukee, WI 53202
Phone: (414) 383-8200
Fax: (414) 383-5066
www.queerlifeneews.com

Queer Life is the information voice of the LGBT community. As a monthly publication and the only state-wide gay newspaper headquartered in Milwaukee, each issue celebrates Wisconsin's diverse population with boldness and class. From what's happening locally and nationally to features on everyday life, QLife has got it all.

EDITOR

Kate Sherry

SALES DIRECTOR

Bob Harvey

STAFF WRITERS

Raymond Bradford, Jennifer Curtis, Patrick Flaherty, Harry Hanson, Gary Hollander, Roxanne Kupfer, Michael Munson, Cyndie Odyia-Weis, Lesley Salas, Don Schwamb, Richard Smoker, Michael Sweeney, Rev. Andrew Warner, Christopher Wilde

SPECIAL TO QLife

Jason Buettner

PRODUCTION & DESIGN

J Harvey

WEBMASTER

Jeff Norton

CIRCULATION

QLife prints 10,000 copies a month. It is a free, monthly newspaper, distributed throughout Milwaukee and the state. You can find it at coffee shops, bars, libraries, stores, and a variety of gay friendly locales.

CONTACT QLife:

Queer Life's offices are open to the public. Regular business hours are 10 a.m. to 4 p.m., Monday - Friday except for holidays.

ADVERTISE IN QLife

Studies prove that LGBT consumers have deeper trust for brands and products that target gay consumers. Reach this powerful segment of the population in the pages of Queer Life and gain loyal customers, a significant percentage of the general population. As Wisconsin's premier LGBT News leader, QLife serves an important buying audience ready to embrace companies friendly to the gay community.

QLife retains the right to reject any advertising material submitted, as well as the right to print the word "advertisement" on any ad. Advertisers will be billed according to the current rate card, at the frequency level earned. Advertiser and/or ad agency will hold Queer Life harmless from any loss or expenses arising from any disputes or legal claims related to advertising in this publication.

Letters to the Editor:

QLife welcomes letters to the editor and guest editorials. Letters must be signed and include author's name and phone number. Author's name will be withheld upon request. Send to editor@queerlifeneews.com. Published letters do not necessarily reflect the opinion of the staff or its advertisers.

© 2007 Queer Life. All rights reserved. Reprint notice: For reprint information or permission, contact editor@queerlifeneews.com

Every Person has the Inalienable Right to a Decent Environment

By Kate Sherry

Years ago, in a response to ever growing environmental problems, an estimated 20 million Americans gathered together on April 22nd, 1970 to take part in a demonstration known as "Earth Day." Thanks to our very own WI-Senator Gaylord Nelson (1916-2005), those folks protested for a healthier environment from coast to coast.

Nelson had said that Earth Day worked, because "it organized itself. The idea was out there and everybody grabbed it. I wanted a demonstration by so many people that politicians would say, 'Holy cow, people care about this.'

It certainly did get the attention of the policy makers. It was responsible for the Clean Air Act, Clean Water Act, and the Endangered Species Act. Oh, and eventually the birth of a wee little organization known as the Environmental Protection Agency.

On the twentieth anniversary of Earth Day, 1990, as I sat on a blanket on the Great Lawn in Central Park, I knew it

was going to be a big day. Sitting in the park, listening to the B52's sing, and Gov. Mario Cuomo, Cesar Chavez, and Mayor David Dinkins speak, I thought all things were possible. My friends and I were surrounded by over 1 million people, all focused on the purpose of the day.

That year, Earth Day had become global; over 139 nations participated, and the New York Times reported that 200 million people were involved.

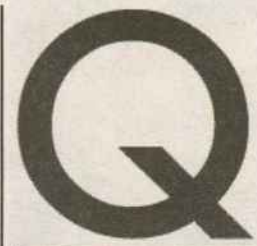
But, I've often wondered since then, if it was the concert, or the cause that brought people together. I'm all for a great show, but what if all of the time, talent and money that goes into throwing these huge extravaganzas went directly to the cause instead of the promotion? I assume (hope) the talent waives any fees for entertainment, but there are travel costs, food, lodging, promotion, set up of venues, fees for workers at the venues, and so on and so on to take care of.

I'm sure a lot of money is made from concert-goers through the sale of tickets,



t-shirts, programs, cds, dvds, and donations, but do people really "get it?" Do they walk away a changed person, ready to fight for the cause, or do they just have a great story and bragging rights to "being there" when Bono sang.

Yeah, I sound like a party pooper. No, I'm not the best recycler in the world,



EDITORIAL

but I do try. I could do more, and every year, when Earth Day rolls around, I am reminded of how much I don't do.

See, after the "great time" that April day in Central Park, the one thing that kicked me off of my environmental high, was all of the trash left behind. I suppose you can't expect a million people to walk away and leave the ground cleaner than it was before, but you can hope. You can hope that they were paying attention to what was being said. Then again, perhaps you can't reach everyone just by throwing a party in the park.

As much as I wish there were a better way, thank goodness they keep trying. This year, take a moment to read up on Earth Day and find out what it is all about. Discover what the movement has accomplished, and read up on tips for yourself, and what changes you can make with "spectacular exuberance."

"The American people finally had a forum to express its concern about what was happening to the land, rivers, lakes, and air - and they did so with spectacular exuberance." - Earth Day Founder Gaylord Nelson

QLife Quickies

The Advocate's Top Ten Cities

MANHATTAN- The Advocate, the newsmagazine for LGBT folks, has published "Where We Live," a 12-page article that looks outside all the traditional gay meccas to find the 10 best places for openly gay and lesbian families and singles. In alphabetical order, here they are: Columbus, Ohio, Dallas, Tex, Ferndale, Mich., Ithaca, N.Y., Lexington, Ky., Missoula, Mont., Portland, Ore., San Diego, Calif., Santa Fe, N.Mex., and finally, Tucson, Ariz. "We continue to find that the lives of gay people in America are evolving in surprising ways," said Advocate Editor Anne Stockwell. "This is evidence of a sea change in our culture and of acceptance and visibility." Ferndale, Michigan, look out!

People will try to sell Anything

eBay.com - The purple message table "where it all happened" between gay escort Mike Jones and fallen evangelical leader Ted Haggard was abruptly removed from eBay auction site due to "charity policy" violations. Auctioneer Mike Jones listed the message table on the site to benefit Project Angel Heart, a non profit that provides meals to people living with HIV/AIDS. Christian groups such as Compassion without Compromise urged people to contact eBay to register complaints, calling the auction "reprehensible."

"There is a very specific procedure for people who want proceeds from their auction to go to a charitable group. We have those procedures in place so that the public can be assured that the money is going to charity," said eBay spokesman Hani Durzi.

"That's why the listing was pulled, not because of pressure from conservative Christian groups. That just wouldn't happen." Haggard was removed as senior pastor of the 14,000-member New Life Church in Colorado Springs after he admitted to buying drugs and engaging in "sexual immorality" with Jones.

Teacher suspended for running pro-gay editorial in school paper

INDIANA - Woodlan Junior-Senior High School teacher Amy Sorrell was placed on paid leave while her job is under review. Sorrell is the journalism teacher at the high school, and because of an op-ed piece she allowed to run in the school paper, she's received two months suspension. The piece advocated tolerance of gays. The editorial, written by sophomore student Megan Chase, was about her friend coming out to her as gay.

"I can only imagine how hard it would be to come out as homosexual in today's society," she wrote. "I think it is so wrong to look down on those people, or to make fun of them, just because they have a different sexuality than you."

After the editorial ran, Principal Edwin Yoder mandated that all writings were subject to his approval. After receiving advice from the Student Press Law Center, Sorrell and the newspaper staff rejected his decision. Later, Yoder wrote Sorrell a written warning for insubordination and failing to carry out her responsibilities as a teacher by exposing students to inappropriate material.

National Accreditation Awarded to Wilson Senior Center

Milwaukee - Interfaith Older Adult Programs, Inc. and Milwaukee County Department on Aging are pleased to announce that Wilson Senior Center has been awarded national accreditation through the National Institute of Senior Centers (NISC). There are over 12,000 senior centers in the country; 141 of which are nationally accredited. Wilson Senior Center will be the fourth center in Wisconsin and the first center in Milwaukee to earn the honor.

frAme
2010
GArAge
FULL
FRAMING
SERVICES
CREATIVE
OPTIONS
LARGE
SELECTION
2010 E. Thomas Ave
1 block north of North Ave,
between Murray & Farwell
/414.962.2010
mon - fri 10-6
sat. 10-4

Madison Madtownner in the Know

QLife is looking for a talented in the know writer from the Madison area to cover local events.

Please send writing samples to:
editor@queerlifeneews.com

or
Call 414-383-8200

for
additional
information.



Pabst Theater Ready to Rock

Special to QLife by Jason Buettner

The Pabst Theater in Milwaukee has had many phenomenal artists grace the stage over the past years. Sufjan Stevens, Iron and Wine, and Bright Eyes are just a few artists whose spectacular performances are still talked about to this day.

On April 16, the Pabst Theater will continue their tradition of bringing highly acclaimed performances to Milwaukee that will for sure be remembered - by welcoming one of indie rock's celebrated musical groups, as well as the return of a brilliant up coming artist.

The **Decemberists** will be making their first Milwaukee performances in ages and will be doing it in full force, as they are currently on tour supporting their fourth and critically acclaimed album **The Crane Wife**. The concept for the album was taken from a Japanese folk tale that frontman Colin Meloy had read, and explores the themes and deconstructs the story through the group's creative and untraditional approach.

Tales of murder, abduction, rape, and hope are unfold throughout the album as the group combines pop music with folk and thinly skates the edge of prog to create a record that not only sets them apart from their contemporaries, but veers away from anything the Decemberists have done previously.

Not only will the audience have the chance to see the Decemberists unveil this album before them live, but they will also get to see the return of a performer who blew away audiences her last time at the Pabst.

The last time we saw **My Brightest Diamond** was when she opened for Sufjan Stevens in the fall of 06. Some say that My Brightest Diamond aka Shara Worden, was quite a scene-stealer, which surprised Worden.

"It's tough being an opening act," Worden told QLife. "People don't know your material and it requires a lot on the brain to listen to something you don't know for 45 minutes."

Her last performance at the Pabst didn't require attention; it demanded it. Her songs flow from soft, dark pop songs, to thunderous tension filled choruses. Most of the songs coming from her album **Bring Me the Workhorse**, Worden combines elements of classical music with her beautifully orchestrated string arrangements, and pop rock with her detuned guitars and lavish choruses.

Worden's songs both lyrically and musically paint a very visual picture for the listener, and you feel as if you are in a painting and things that Worden is singing are being drawn around you, while the music sets the mood. This could be because Worden has a unique writing style.

"All the writing is personal," said Worden. "I think in pictures so it comes through in the music."

What also comes through in the music, is Worden's ability to appeal to a wide audience range. Her music doesn't alienate or isolate anyone in the room, nor is it gender specific. Which is something that Worden consciously thinks about.

"I like that concept, and I can leave gender out," said Worden about her songs appeal to an audience.

"Universality is a concept I like a lot. If you can get beyond gender or genre, then your getting to what is truly human."

Worden's performance at Pabst will be a little different this time around, as she plans to abandon the strings and just have drums, guitar, and bass to make it a rock show. But still expect to be blown away by her intriguing vocals and the imaginative construction of her songs.

If you can't catch the Decemberists and My Brightest Diamond in Milwaukee at the Pabst Theater, then you can catch them in Madison at the Orpheum on April 20.



MUSIC REVIEW

Get Yer Freak On!

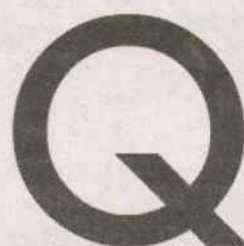
At the heart of the reclamation of "queer" is the essence of otherness, being different and apart from the norm. In British English, and associated use in Commonwealth countries, the use of "queer" reinforces the definition of outsider, as it has less of a connotation about one's sexuality and serves to highlight something incongruous or

that which is unusual by degrees. In the struggle against oppression by dominant society, a lasting lesson from the queer movement is about embracing identity with no compromise, especially in regard to assimilation. Two zines from the height of the "queer zine explosion" in the early 1990s helped pave the way for those queers on the fringes to find a voice and

bring much needed energy to the vigorous critique of and dissent from assimilationist politics.

The Only Freak in the Village

In coordinating a recent addition to the Archive, we were able to reconnect zinester Andy G with his seminal zine work from the days when he produced what may possibly have been the only queer zine to originate in Wales. While Wales today can boast of being home to the production of the BBC's revival of Doctor Who and its queerly bent sci-fi spin-off, Torchwood, in the early 1990s there was naught for any sort of representation of non-mainstream queer culture there until **Freaky Queer** [one-off, 1992, 28 pages]. This zine is notable for the sense of urgency and action found on every page. All the art is nicked from elsewhere, articles have handwritten afterthoughts and clarifications written in the margins giving it a charm that would be otherwise lost with a slicker looking production value. Andy's activism allows him insight into underrepresented segments of the queer community such as bisexuals, practitioners of magick, transvestites, and working class folks. His essay "Source of Scorn: The Effeminate Queer" concludes with notion of how he gravitated to queer punk because he was hard (read: tough) and femme, and that those who slag off on queens usually aren't that far off from being total queens themselves, so they should be very careful in laying criticism or making comments. This issue also boasts an interview of Alice of Chumbawamba long before they became famous. She comes out as "a pervert slut" in terms of her sexual expression.



ZINES

Christopher Wilde (cwilde@queerlifeneews.com) is a co-founder of QZAP, artist, DJ and Mac tech support specialist building community in Milwaukee's Riverwest.

But You CAN Pick Your Friend's Nose

Even with the advent of computer designed zine layout, it didn't change the political content or shock value one bit. **Queer Zine** [Issue 2, 1996, 44 pages] from Australia puts a bald queer punk with fingers firmly inserted in nostrils on the cover, so you know they'll just keep digging for more gold as the issue unfolds. Editor Mikol brings together a collection of interesting articles, comics, and porn stories (including an early cyberpunk porn tale) from a variety of people. Addressing an audience on the fringe means thought-provoking subjects like population control, IV (injectable) drug use, Hep C, and SM scenes that are covered directly and without judgments. Like **Freaky Queer**, this zine also blatantly steals a chunk of its graphic content with similar attention to making sure there's attribution. The standout in this issue is the music review section with awesome queerpunk legacy labels like Outpunk and bands Sister George, Sta-Prest, Tribe 8 and Behead the Prophet, No Lord Shall Live.

These zines and many more can be found on the Web at www.qzap.org.

THE CLOCK TOWER

YOU'RE NOT TOO LATE

Corner of Prospect and North
EAST SIDE'S HIPPEST BUILDING
414-704-7103

OFFICE SPACE AVAILABLE

1969 Dykesploitation Classic comes to Milwaukee

The Milwaukee LGBT Film/Video Festival and the Milwaukee Art Museum are thrilled to welcome LGBT film historian Jenni Olson to Milwaukee to present a rare screening of the beloved – and hilarious – 1969 dykesploitation B-movie classic *That Tender Touch*. An evening both edifying and entertaining!

Historian, collector, curator, distributor, and filmmaker, Jenni Olson is one of the world's leading experts on LGBT cinema history. After co-founding the Minneapolis/St. Paul LGBT Film Festival in 1986, Olson co-directed the San Francisco International Lesbian & Gay Film Festival, established the massive queer movie database, PopcornQ (at PlanetOut.com) and launched the first showcase for LGBT streaming media in 1995, the PlanetOut Online Cinema.

Especially interested in reclaiming and rediscovering films of lesbian and gay content originally intended for other audiences, Olson has broadened - and complicated - the history of LGBT representation. Olson offers, through her work, a history of an interventionist film spectatorship, wherein viewers can claim films not originally marketed to them. Through the celebration and circulation of film such as *That Tender Touch*, Olson's historical project reinvigorates film history by unleashing new representations into circulation while activating the role of the viewer.

In addition to her collection and exhibiting, Olson has written *The Queer Movie Poster Book* (Chronicle Books, 2005) and has edited *The Ultimate Guide*

to Gay and Lesbian Film (Serpent's Tail Press, 1996). She has also produced the compilation films *Homo Promo* (1993) and *Afro Promo* (1997) which, in their respective surveys of movie trailers, offer histories of LGBT and African American representation in mainstream film that are alternatively hilarious and troubling, campy and bracing.

Olson is also a celebrated experimental filmmaker. Her most recent film *The Joy of Life*, an experimental documentary/"city symphony" film about San Francisco, lesbian courtship, and the Golden Gate Bridge as a destination for suicides, was recently spotlighted at the Museum of Modern Art. The film, which received prizes at the New York and Los Angeles LGBT Film Festivals, screened at the Milwaukee LGBT Film/Video Festival (2005) and hundreds of other such festivals around the world. Her earlier short film *Blue Diary* screened at the Milwaukee LGBT Film/Video Festival in 1997.

Described upon its release by *Variety* as "One more variation on the Lesbian thing," the "wildly entertaining melodrama has a multitude of scenes between the two femmes...which probably will be exploited for good response in certain bookings." Olson explains: "While that 'good response' was in fact supposed to come from straight male audiences seeking soft-core titillation, contemporary lesbian audiences will respond wildly to the camp value of this vintage Dykesploitation classic."

The screening: Thursday, April 5 at 6:15pm in the Lubar Auditorium of the Milwaukee Art Museum, 700 North Art Museum Drive. The film will be introduced by Jenni Olson and will be followed by a talkback with Olson and Carl Bogner, director of the Milwaukee LGBT Film/Video Festival. Tickets are \$5 (free to those who join MAM that evening) and are available at the door. For further information, call 414.224.3200. This collaboration between the Milwaukee LGBT Film/Video Festival and the Milwaukee Art Museum is made possible through the generous support of the Cream City Foundation's Joseph R. Pabst LGBT Infrastructure Fund. For more information, contact Carl Bogner of the Milwaukee LGBT Film/Video Festival in the UWM Department of Film at 414 229 4758 or lgbtfilm@uwm.edu



POLITICS

Patrick Flaherty (pflaherty@queerlifeneews.com) is a longtime activist for LGBT equality. He works at the Milwaukee LGBT Community Center and lives with his partner in Milwaukee's Riverwest.

Corporations aren't often the place for straight talk. If you have a conflict with a friend or a roommate, you can usually surface the issue pretty quickly in plainspoken English. Dialogue about conflict in the soft authoritarianism of a modern workplace, where even the CEO of a Fortune 500 company is addressed by first name by employees who nevertheless have little more say than in Dickens' day – now that is communication of a different sort. In fact, the workplace's intrinsic need for a polite, thin-lipped "professionalism" to keep a seething workforce of disparate individuals woven together around a common enterprise, makes the biggest conflicts – who gets paid what, who calls the shots – totally taboo.

It's time to break that taboo in Wisconsin. Because when it comes to gay and lesbian workers, we're getting stifled. I'm not talking about the "pink glass ceiling" that seems to keep LGBT folks out of the corner offices (I'll recognize the first person to e-mail me the name of an openly LGBT Fortune 500 CEO in my next column) or the rank employment discrimination faced by

transgender people. I'm talking about the 25-40% or more of an employee's compensation that comes from benefits like access to the company family health plan, family and sick leave to care for an ailing spouse, or company contributions to a 401(k) or pension plan that can be left to a spouse without tax penalty or long delays in probate.

In fact, in this health care anxious society, where millions have slipped into the ranks of the uninsured in the last five years, I'll just focus on barriers to health care for gay families. Nationally, the news is trending positive. Last year was the first year that a majority of the Fortune 500 (the 500 largest companies in America) offered gay and lesbian employees the ability to cover their partner on the company's family health plan, according to the Human Rights Campaign. Only one Fortune 500 company offered domestic partner benefits fifteen years ago: Levi Strauss. That's a lot of progress. But when my organizing colleagues and I at Center Advocates, the equal rights organization affiliated with the Milwaukee LGBT Community Center, looked at the 20 largest Wisconsin companies, only about 25% offered equal benefits. When we surveyed our supporters, the results were similar: only about 25% had access to domestic partner benefits at their workplace. The barriers to family benefits for LGBT people at local employers help explain a 2005 Diverse and Resilient study finding showing that gay and lesbian Wisconsinites are twice

Straight Talk for Business

as likely to have an uninsured member in their household as their heterosexual neighbors.

What is so especially frustrating about the three-fourths of large Wisconsin employers who deny health care to gay partners is that the business community already knows that it must embrace a diverse workforce to replace retiring baby-boomers. Regionalists like Richard Florida, author of *Rise of the Creative Class*, have been paid big bucks to come and help local communities become hip and tolerant of LGBT people, qualities that Florida finds attractive to the young, educated workers our regional economy needs to fight off stagnation. Business leaders say the biggest barrier to drawing more young professionals to Milwaukee is its backward image, but like dieters bypassing the photo they put on the refrigerator of their fit ideal, Milwaukee's business leaders keep reaching for the antigay salami with extra mayo. One large utility executive was reported to tell his employees that his company wouldn't offer domestic partner benefits until most other large Milwaukee companies did, even though its Wisconsin peers like Excel Energy and Alliant Energy already offer the benefits. If every business leader waited until the majority of its peers did something before following suit, we wouldn't call that leadership. In plain English, we'd call it stupid.

1211 E. Conway
481-2348
481-2367
Fax: 481-2050

Gift Certificates
available.

***Tues, Wed, Thursday Specials:**
\$1.25 6 oz Hamburger
\$1.25 5 oz Italian Sausage
***Sunday Special:**
Buffalo Wings .25¢

*In-House Specials Only

Hours: Closed Monday
• Tuesday - Thursday 4pm -10pm
• Friday & Saturday 4pm-12am
• Sunday 3pm-10pm
NO PERSONAL CHECKS PLEASE
www.foodspot.com/denoonsaloon

Military Service People:
Please bring your I.D. and get \$1 OFF a
Lg. Pizza; 75¢ OFF a Med. Pizza;
50¢ OFF a Junior Pizza.

Pay for the art, not for the location.



Historic Downtown Waukesha's Fine Art Gallery.
Home to more than 20 artists.

262-896-8875

www.riversendgallery.com

380 W. Main Street, Waukesha, WI 53186

Hours: Wed. & Thurs. - Noon - 6 p.m. Fri. - Noon - 7:30 p.m.
Sat. - 10 a.m. - 6 p.m. Sun. - Noon - 6 p.m.

River's End

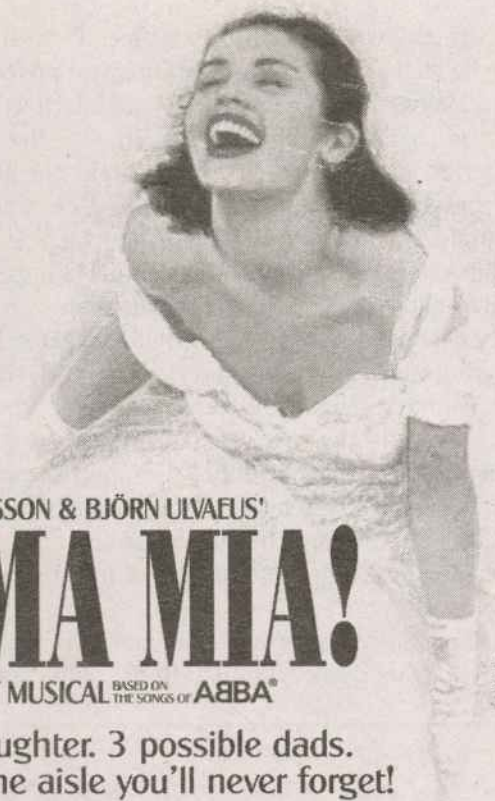


GALLERY

"ABBA-SOLUTELY FABULOUS!"

LIZ SMITH

ONE
WEEK
ONLY!



BENNY ANDERSSON & BJÖRN ULVAEUS'
MAMMA MIA!

THE SMASH HIT MUSICAL BASED ON THE SONGS OF ABBA®

A mother. A daughter. 3 possible dads.
And a trip down the aisle you'll never forget!

www.mamma-mia.com

Mamma Mia! original cast recording available on Decca Broadway

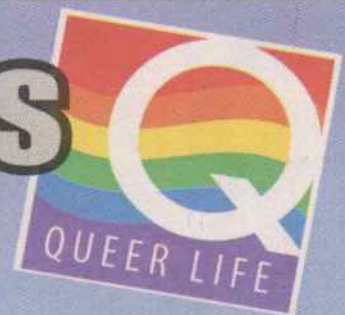
TUE, MAY 29, 7:30 PM
WED, MAY 30, 7:30 PM
THU, MAY 31, 7:30 PM
FRI, JUN 1, 8 PM

SAT, JUN 2, 2 PM & 8 PM
SUN, JUN 3, 2 PM & 7:30 PM
\$35 - \$60
OVERTURE HALL



www.overturecenter.com • 201 State St, Madison WI
TICKETS: 608.258.4141 • GROUPS: 608.258.4159 • TTY: 1.866.704.2328

Attention Advertisers



Don't miss your opportunity to show
your PRIDE in the June Publication of
QLife News.

Color is limited !!!!
Call for early bird discounts.



Contact a member of the QLife Sales Team today!

414-383-8200

Believing the Resurrection

This month Christians celebrate our holiest holiday: Easter. It is a day when Christians remember the story of Jesus' resurrection, or his return from death to new life with God.

In my congregation we will read stories from the Bible about the disciples discovering that Jesus' tomb was empty and then their miraculous experiences of Jesus still living amidst them. We will also read how the disciples understood this strange and unprecedented event. Particularly important to us are the words of Paul, "O Death, where is your sting? O Grave, where is your victory?" In our faith we believe that the resurrection of Jesus so changes the world that even death itself is transformed.

This is a cornerstone belief in Christian: everything changes with the resurrection of Jesus. But recently, as I listen to the constant homophobia of the radical right, it occurred to me that they don't really believe in the resurrection. Fundamentalists might say they believe in Jesus, but do they believe in Easter?

Fundamentalists might say they believe in Jesus, but do they believe in Easter?

The fundamentalist critique is perhaps so familiar that it need not be repeated. It is in brief that homosexuality is sin, God hates sin, and therefore God hates homosexuals.

Versions of this argument appeared recently when General Peter Pace, Chair of the Joint Chiefs of Staff, reiterated his support for excluding gays and lesbians from the military. It was also a prime part of Dinesh D'Souza's Enemy at Home, in which he called on a united effort of fundamentalist Christians and Taliban Muslims to defeat the "gay agenda." Whatever we may think of fundamentalists, it is clear that they see



RELIGION

The Rev. Andrew Warner (awarner@queerlifeneews.com) is a pastor at Plymouth Church UCC on Milwaukee's East Side. He lives with his partner, Jay, and their two children in Whitefish Bay. Your questions about LGBT spirituality are welcome.

queer people as a greater threat than terrorism.

Increasingly it seems to me that their paranoia is a sign that they don't really believe in the resurrection of Jesus. Reading through the Bible it seems clear that Easter radically changed the relationship between humanity and God. Sin would no longer be able to separate someone from God. People were not to feel anxiety and dread in their relationship with God. We were united in one human family where none were to be excluded. As I read the Bible Easter comes as this world-transforming moment where the first things – sin, fear, exclusion – have passed away and there is a new kind of community born.

This sense of Easter is missing in fundamentalism. Sin, fear, and exclusion remain their watchwords. I've never found it productive to engage in scripture-textproofing with fundamentalists. But maybe next time I debate one I'll ask, "Tell me what Easter changes for you?"

For me it changes everything. It is on the basis of Easter that my congregation welcomes all – gay, straight, lesbian, bisexual, transsexual, why even conservative. Easter brings us out of relationships of fear and an anxiety of sin to live together.

This Easter my prayer is that fundamentalists would believe in Easter as much as they believe in Jesus.

ARCW MEDICAL CENTER

At the forefront of HIV health care

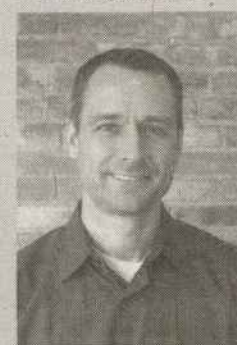
Every person with HIV disease has unique needs. At the ARCW Medical Center we are dedicated to learning what matters most to you. We provide the most advanced medical and dental care along with highly supportive mental health services. We help you understand your treatment options and provide the care that is best for you.



Iram Nadeem, MD



John Fangman, MD



Steve Debbink, DDS



Karen Godfredsen, PsyD

Medical Clinic

- Complete medical management of HIV disease
- Treatment of opportunistic infections
- Prescription of HIV medication regimens
- Immune system monitoring
- Treatment of general health conditions
- Immunizations
- STD diagnosis and treatment
- Health education and promotion

Dental Clinic

- Comprehensive examination
- Cleanings and oral hygiene education
- Oral cancer screening
- Scalings and root planing
- Fillings, crowns and bridges
- Root canal therapy
- Dentures
- Oral Surgery

Mental Health Clinic

- Screening for mental health conditions
- Diagnosis of mental health conditions
- Crisis stabilization
- Individual therapy
- Group therapy
- Couples therapy
- Drug counseling and treatment

Call for appointments:

414-223-6800 or
800-359-9272 ext 6800.

Wisconsin's largest provider of HIV health care.

ARCW

AIDS RESOURCE CENTER OF WISCONSIN

THE PEARL FISHERS
BY GEORGES BIZET • A MADISON PREMIERE

FRI, APR 13 at 8 PM
SUN, APR 15 at 2:30 PM

\$16, \$35, \$48, \$69, \$89, \$98
Sung in French with projected English titles.

Overture Hall
Overture Center for the Arts
Madison, Wisconsin

MADISON Opera
madisonopera.org

TICKETS: 608.258.4141 or
www.overturecenter.com/tickets.htm

Tickets starting at just \$16!

Do Not Let Your Body Starve All Day

Corporations aren't often the place for straight talk. If you have a conflict with a friend or a roommate, you can usually surface the issue pretty quickly in plainspoken English. Dialogue about conflict in the soft authoritarianism of a modern workplace, where even the CEO of a Fortune 500 company is addressed by first name by employees who nevertheless have little more say than in Dickens' day – now that is communication of a different sort. In fact, the workplace's intrinsic need for a polite, thin-lipped "professionalism" to keep a seething workforce of disparate individuals woven

together around a common enterprise, makes the biggest conflicts – who gets paid what, who calls the shots – totally taboo.

This month is for all of you who would like to put on some muscle and not fat! One of the hallmarks of dieting to gain mass is to not let your body starve all day and then dump in a truckload of food at once. There is a time and place for caloric deprivation, but the body needs at least 20-30 grams of protein every 2-3 hours. Now, if you just had an intense workout, you have a window of opportunity immediately after the training session when your body can absorb a significantly higher level of protein. 48-60 grams of protein is most common for a man that weighs 180lbs and up. A good rule of thumb is 1-2 grams of protein per-pound of body weight for your daily intake. So if you are a 200-pound man, that's 200 grams of protein. Your carbohydrates will be in the 2-3 range, but I suggest that you mix it up a little with a 1 gram per body weight.

Ok, you now know that taking a shake right after the workout and not waiting to get home is very important, put what kind of protein is best. You will need a whey protein; it's a fast digestive protein. So getting 100% whey is the best! Optimum Nutrition has, by far, one of the best 100% whey protein powders on the market today. If I would have to list in order the best protein, a high-end micro-filtered whey protein isolate, would be it.

Now that you have protein pushing through your body, you can't forget about

water. Water contains no calories, yet every cell, tissue, and organ, and almost every life-sustaining body process needs it to function. Water transports nutrients and oxygen to your cells, carries waste products out of your cells, lubricates body tissues, moistens your mouth, eyes and nose, and constitutes the tissues that cushion your joints and protect your body organs. When you workout drink lots of water and if you one of those guys that sweat a great deal, drink more. Losing one or two pounds of your body's water weight can create a feeling of thirst. With more fluid loss, strength will fade. Elimination of fats from the diet is one area that will be a big mistake. Essential fats are needed to help you get lean and big muscles. Making your selection of supplements whatever your game-plan; mass building, fat burning, recovery, pump enhancement, energy augmentation, you can find a supplement to meet your needs. I will list some of the important ones you should look for.

1. Arginine, 1 to 5 grams taken 1-3 times a day
2. Branched-Chain Amino Acids (BCAAs) 6 grams per-day
3. Caffeine, about 600 milligrams per day is the maximum I'd recommend.
4. Chromium, a smart dosage level. No more than 200 micrograms per day
5. CLA, 6 grams per day for eight weeks at a time.
6. Creatine, stay away from the overabundance of sugar, look for the pure



FITNESS

Sweeney's Gym is family owned and operated by Michael Sweeney, a personal trainer for the last 8 years. Sweeney's prides itself on caring for people and their health.

creatine. 5-10 grams per day.

7. D-Ribose can be as high as 30 grams per day

These is just some of the items you don't see highlighted all the time but they are just as important as Glucomannan, Glucosamine/Chondroitin, Glutamine, Green tea extract, L-carnitine, Niacin, Multivitamin/Multimineral, and Zinc. So if you want to put on some size and stay thin you need to eat, take your vitamins, drink lots of water and get that protein count up there. Don't be afraid of the oatmeal, peanut butter, and yes, rice cakes (plain with low or no salt) with a protein shake, which works great for a meal and post workout drink.

For last months fit column, go to www.myspace.com/sweeneysgym.

RIVERWEST ACCOUNTING SERVICES

Do I see a refund in YOUR future?



Individual & Business Tax Service
Free Electronic Filing

DOWNTOWN SERVICE AT RIVERWEST PRICES

Brian Dettmering, CPA
bdcpa@yahoo.com

414-364-0152

the QUEER program

hosted by:

Michael Lisowski
Charles Daniels

one milwaukee. one lgbtq vision.
news and information for and about the LGBTQ community since 1992

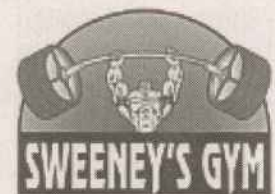
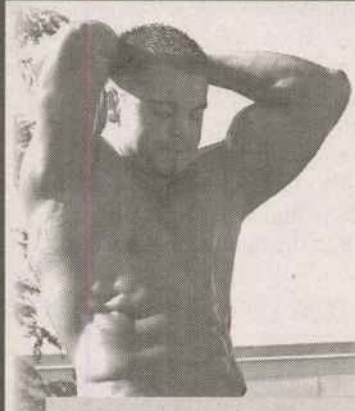
LIVE **mondays @ 6:30PM**
TIME WARNER **96**
CABLE

replay **saturdays @ midnight and 10pm**

feedback
(414) 265-8500
queerprgm@aol.com
P.O. Box 090441

Sweeney's Gym; Hassle Free, Affordable Fitness Experience

Discover the Difference



Sweeney's Gym offers customized fitness programs for everyone's individual needs & wants.

- One-on-one with a personal trainer.
- Training available for special needs & persons with disabilities. Nutritional counseling tailored to meet individuals needs.
- Weight training & cardio programs for everyone's lifestyle.
- Hour long sessions.

The weather is getting HOT!
Are you?

Get your body beach ready at
Sweeney's Gym.

5311 S Howell Avenue, Milwaukee, WI 53207

Phone: (414) 769-0772

www.sweeneysgym.com

You won't feel like just another number

Getting Ready

In the decades I have been doing consulting with nonprofit organizations around the Midwest, I have noticed some very interesting patterns of developing and implementing health and health education programs. Two that get me most worked up I call "Ready, FIRE!... Aim" and "Ready, ready, ready, ready, aim, aim, aim..."

In the "Ready, FIRE!...Aim" approach, folks seem so passionate about an issue that they feel that something needs to be done urgently. They take somewhat random action or use the old tried – but too often untested – methods with which they are most familiar. There are many examples of this, but two that many of us can relate to are using expensive posters to announce something that everyone knows relates to only twelve specific people or taking on the role of "community spokesperson" when there is no community behind you. In that sense of urgency, we sometimes fail to consider the costs and the benefits of doing things a better way.

The other approach, "Ready, ready, ready, ready, aim..." fails to really ever take action. In this case, there seems

to be a strong sense that everyone's fingerprints need to be on something before it can move forward. Proponents of this approach might say, "Sure we need to let people know about the huge potential problems for LGBT people, but don't we have to wait for all the other gay groups around the state before we take action?"

The urgent folks frequently leave very important voices out of the mix for the sake of expediency. The laid-back folks often emphasize the process over the product, failing to appreciate the real importance of the issues that need to be addressed.

With the minimal public health resources currently available to Wisconsin LGBT communities, it is critical that we get ready for action in smarter ways. We must simultaneously learn to address the structural power differentials that too often leave important voices out of the process while we move forward to take more bold action on behalf of our communities. This readiness approach will take innovation and trust.

Last month, the Medical College of Wisconsin announced its 2007 Community/Academic Partnership Awards totaling \$7 million. Twenty-

nine projects received funding; 14 are called Impact projects and each receives approximately \$450,000 over three years. Fifteen Development projects were selected to receive about \$50,000 each.

Diverse and Resilient, Inc., the organization I started 11 years ago, received a Development grant to determine the readiness and capacity of small and large LGBT communities in Wisconsin to address intimate partner violence (IPV). Working with Drs. Carol Galletly and David Seal of the Medical College Department of Psychiatry and Behavioral Medicine, Dr. Susan Turrell of the University of Wisconsin Eau Claire Psychology Department, and Molly Herrmann, this project will result in a three-year action plan to provide IPV services based on the readiness levels of various communities.



HEALTH

Gary Hollander, Ph.D., (ghollander@queerlifeneews.com) is president and executive director of Diverse and Resilient, a nonprofit committed to the healthy development of LGBT people in Wisconsin. He is also owner and principal consultant of Gary Hollander Enterprises, which assists organizations with their development, emphasizing change management, team development and cultural competency.

Experience will tell us if there is sufficient innovation and trust to move this very important project forward in a timely way. But we plan to avoid rash decisions and chronic inactivity.

FIND YOUR BIG LIFE!

Discrimination against lesbian, gay, bisexual and transgender people tells us we are small, insignificant pawns of forces in society. But our humanity demands we find our joy, stretch our limits, and live large. The time we've been waiting for is now. Find your big life!

Diverse & Resilient is a statewide organization committed to the healthy development of lesbian, gay, bisexual and transgender people in Wisconsin. We accomplish our mission by helping grow the organizations and youth and adult leaders who aid us as a community. www.diverseandresilient.org

1240B East Brady Street | Milwaukee, WI 53202 414.390.0444

Proudly Serving the Gay, Lesbian and Bisexual Community

HUME LAW OFFICES

Kathleen E. Hume, Esq.

Family Matters • Estate Planning
(262)789-6845
350 Bishops Way, Suite 204 • Brookfield, WI 53005

the Cat Doctor, S.C.

Compassionate Health Care Just for Cats
Quality Feline Medicine & Surgery

Learn about Care, feeding behavior & more!

- Dentistry • Boarding • Nutritional Consultant
- Behavior Consultation • Gifts • Supplies

Kathryn Christensen DVM
Nikki Seibert DVM

414.272.CATS (2287)
236 N Water Street Mil. WI 53202

www.catdoctor98.com

The 1st National FTM+/SOFFA CONFERENCE in the Heartland
March 29–April 1, 2007 Milwaukee, WI

FORGE FORWARD 2007 CONFERENCE

Thank you to the

Wisconsin LGBT community for making the FORGE 2007 Conference a success!

www.forge-forward.org/conference

BlueFlameMusic
We're on FIRE about Guitars
Milwaukee, WI

COOL GEAR FLAMIN' HOT DEALS & Prices !!!
Guitars, Amps, Accessories & More
BUY * SELL * TRADE * NEW * USED * VINTAGE

5264 South 27th Street

(414) 282-4800
M-F 11-7, Sat & Sun 11-5

Mention Q LIFE for an additional 10% off your purchase!

REGENT REALTY
Tim Russell Brian Pierick
Partners in life, Partners in business.

We're Your Community Realtor!

Providing a superior level of informed, professional real estate services to buyers and sellers in the greater Milwaukee area.

• The Right Price for Your Home • Seller AND Buyer Agency
• Competitive Commission Structure • Effective, Aggressive Marketing • Full-Time & Full Service Realtors

www.RegentWI.com 414-774-1251
9323 W Greenfield Avenue

An Unlikely Pair

Sometimes the most amazing people live across the street, shop at the same grocery store, and ride the same bus. They touch our lives by doing simple things like listening to us when we have something pressing to say (and even – or especially – when we have mundane things to share). They exchange stories with us over cups of coffee, and they encourage us to follow our dreams – sometimes just by taking us seriously and not laughing at our hopes and inner secrets.

I met Eldon Murray in the late 1980s, nearly 20 years after Lou (then Sheila) Sullivan came out to him as transgender. A warm-hearted, generous (and often times a bit quirky) man, Eldon was progressively open-minded, eager to meet new people, delve into challenging territory, and fiercely stick up for what he believed was right and just. Even before it was “popular” to be trans-positive, before it was “fashionable” to add T to LGBT, before there was a visible mass of transgender people taking an active, leadership role in our community, Eldon was a strong trans-ally and someone who “got it.”

Lou Sullivan was a gay FTM who founded what would later become FTM International; the world's largest organization serving FTMs. Lou was a

detailed historian, organizer, person who connected literally hundreds of trans-masculine people and SOFFAs through his outreach. He also pushed the boundaries of transgender medicine. He would not settle for discrimination against gay transgender individuals wanting to pursue hormones and surgery, and then he challenged medical providers when he became HIV positive and needed care.

Eldon and Lou were an unlikely pair – others may well have seen their friendship as odd – a bold-bellied older gay man and a gangly younger FTM. What they shared cut across their outward identities, across what others could imagine their connection could be. Both Eldon and Lou were down-to-earth, unpretentious, tireless advocates. Both championed and fought for the underdog, helping them believe that what they dreamed for was possible, that they had a right to exist and claim the same benefits as everyone else. Both preserved history and made sure critical pieces (and people) weren't lost.

Although Eldon's lifelong activism recently ended with his death (March 5, 2007), the perennial seeds he planted will live on. Sometimes the seeds planted are far more beautiful and bountiful in the years after they were initially sown. Like a prairie that continually reseeds itself,

Sometimes the seeds planted are far more beautiful and bountiful in the years after they were initially sown



TRANSGENDER

michael munson (mmunson@queerlifeneews.com) is an emotionally intense, transgressively gendered, passionate social agitator who strives for inclusion and harmony by focusing on our human similarities and strengths. He is lovingly committed to his partner and their 12 year old son.

Eldon planted (or perhaps just watered!) a seed in Lou Sullivan, who went on to sow even more seeds which resulted in the emergence of an FTM community, 20 years after MTFs had begun organizing.

Lou wasn't very well known when he was alive, even though his work was groundbreaking for FTMs and gender-variant transmasculine individuals everywhere. History has captured his work, however, and is helping bring him to the legendary status he deserves. Only time will tell if Eldon will be similarly helped by history – remembered more after his death, than he was acknowledged while he was alive.

Their friendship, more so than their individual lives and accomplishments, is what sticks with me. It reminds me that sometimes the damndest, most unlikely people are the ones who become our best friends and allies; the ones who watch our backs and hug us when we're crying; and the ones who believe in us, no matter what or where our dreams take us.

Everything Possible: Signs of Hope

Saturday, April 14, 2007 • 7:30 p.m.

Unitarian Universalist Church West
13001 W. North Ave., Brookfield

Under the Artistic Direction of Kristen L. Weber

Tickets are: \$12 in advance, \$15 at the door.
Family Rate: \$25 (Two adults & four kids)

For tickets or information: 414/276-8787
www.creamcitychorus.org

Guest Soloist/Narrator: **Joel Kopischke**
Guest Conductor: **J. Ruben Piirainen**
Featured Premier: **"Song of Wisdom from Old Turtle"**
Text by Douglas Wood
Music by Joseph Martin
Special Appearance by: **Mrs. Fun**
Other Highlights: **20th Anniversary Celebration & History Displays**
Doors open at 6:45, so come early and explore!
Reception and Awards Presentation

SPECIALS:
TUES: Shot & Beer Night \$5
WED: SKKY's the Limit
THU: 2-4-1 All Night (excluding Top Shelf)
FRI: Prize Night
SAT: Pull Tab Specials
SUN: "Big Liquid Brunch"

APRIL 14 - Welcome Mil-Maids
APRIL 20 - Melissa & Friends 8pm
APRIL 28 - Lucky Cones and the M's proudly presents a night of gay cabaret 10pm

Tuesday - Friday 4pm - Close
Happy Hour 5-8pm
Saturday - Sunday 11am - Close

1101 S. 2nd St
Milwaukee
414-383-8900

CHICAGO LIVE!

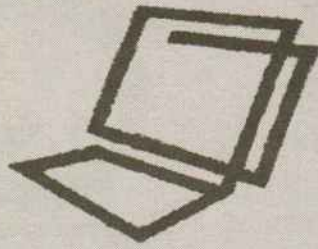
THE MOST WANTED MUSICAL

5 PERFORMANCES!
MAY 11-13 · THE MILWAUKEE THEATRE
500 W. Kilbourn Avenue (6th & Kilbourn)

For tickets call 414-276-4545 or visit www.ticketmaster.com
Groups call 414-908-6092 or email mpowell@wcd.org

Also sold at The Milwaukee Theatre Box Office and all Ticketmaster outlets including Boston Stores and select Piggly Wiggly stores. Convenience fees apply. The Milwaukee Theatre Box Office is open 10 am-5 pm Monday-Friday.

THE MILWAUKEE THEATRE | ticketmaster | TIME WARNER CABLE | LIVE BROADWAY



THE PERLSON GROUP S.C.

ACCOUNTANTS & TAX PROFESSIONALS

40 YEARS EXPERIENCE
Professional Services for
All Types of Business.

- Accounting • Payroll • Software
- Consulting • Business Start-ups

7101 North Green Bay Avenue
Milwaukee, WI 53209

(414) 351-1040

www.boydperlson.com



BY CHOICE HOTELS

Let our Family take care of your Family for PrideFest 2007.

Only minutes away from the Festival Grounds!

For Reservations Please Call:
414-481-2400 or 1-866-481-2400.
www.clarionmilwaukee.com

5311 S. Howell Avenue
Milwaukee, WI 53207

We are playing it safe



Because one in four people has a sexually transmitted infection, and 80 percent of the people who have one don't show symptoms. Not when they get it and not when they pass it on. Confidential testing and treatment are available at Planned Parenthood - high-quality, personal care at an affordable cost.

CALL
1-800-230-PLAN
FOR THE PLANNED PARENTHOOD HEALTH CENTER NEAREST YOU

Planned Parenthood | ppwi.org

JUST LISTED @ \$294,900



2372 N. Stanley Place
Milwaukee, WI. 53212

**OPEN HOUSE: 4.1.07
1-3pm**

A weekend delight! Relaxed urban style with lots of romance and a touch of nostalgia...this MAGAZINE worthy home has been fastidiously rebuilt to exacting standards. Priced under actual cost. All components custom ordered or built on-site. East of Humboldt Boulevard, in Riverwest, just steps from UWM's new RiverView.

THE HERSCHDE TEAM
august herschde | 414.687.4288
john herschde | 414.350.0005
katherine herschde | 414.687.7932
REALTY EXECUTIVES
243 E Buffalo Street
Milwaukee, WI 53202

www.TakeTheMetro.com
kherschde@realtyexecutives.com

Get your HIV results in
20 minutes

FREE Syphilis and HIV Outreach Testing

All testing times
10pm-1am

- Harbor Room • Wed April 4
- Switch • Thur April 5
- Club Icon • Wed April 11
- Fluid • Wed April 18
- Boom • Thur April 19
- NEW!** Triangle • Tues April 24
- City Lights • Wed April 25
- Woody's • Thur April 26

STD Specialties Clinic, Inc.

3251 N Holton, Milwaukee
414-264-8800

Also available for men who have sex with men: The Free Morning Clinic
Saturdays 9am-Noon • Or schedule an appointment (M-F 8am-6pm)

SEE YOU ON THE STREET! Look for our NEW mobile clinic!



YOU'RE NOT TOO LATE

THE CLOCK TOWER

Corner of Prospect and North
EAST SIDE'S HIPPEST BUILDING
414-704-7103

OFFICE SPACE AVAILABLE

Kenneth Cole
COOL Men's Shoes and Accessories

Van's

MENS SHOE SHOP

DOWNTOWN SINCE 1939
631 N. PLANKINTON AVENUE
Shops of Grand Avenue
MILWAUKEE (414) 271-5175

www.VansShoeShop.com

Bacco Bucci | Dr. Martins

Do You Love Antiques?

Best selection for collectors and decorators in Milwaukee's trendy warehouse district!

- 18th thru 20th century • 15,000 sq ft., packed!
 - Dozens of southeastern Wisconsin's top antique dealers and decorators
 - From the elegant to the funky • Small items, big items in all price ranges
- Milwaukee's best selection of designer vintage clothing!

Customer oriented!

- Local, national and international delivery available
- lay away • easy, convenient parking • gift certificates



175 S Water St • Milwaukee, WI
OPEN 11-6 daily, noon to 5 Sunday
Phone: 414-278-9999

Print out a map from your door to ours:

www.RiverviewAntiqueMarket.com

The Greening of America

With a brief salute to EarthDay, I'd like to whole-heartedly subscribe to the greening of our homes. Health and environmental issues have forced suppliers to produce budget conscious and high-end goods to make our homes more healthful and kinder to the planet. Many of these products seem almost too good to be true. There are dozens with earth-friendly features including recycled materials, energy-efficient appliances and paints and finishes with low or zero volatile organic compounds (VOCs -the indoor air pollutants that are released by chemicals used in paints and solvents) The best part of these earth-friendly products is that they are also good-looking and widely available.

Kitchen Countertop Options:

- Plastic countertops made out of melted and pressed recycled plastic and non-toxic dyes.
- Vetrazzo countertops composed of at least 80% recycled glass shards with a non-toxic dye.
- Granite and steel countertops – granite is natural and durable and cleans easily, neither emits harmful gases.
- Paper (yes, paper) countertops made of compressed, recycled brown paper bags and newspapers.
- Appliances that have earned the trademarked "Energy Star" rating to reduce energy use.

Flooring Options:

- Hardwoods, especially American red and white oak.
- Bamboo, one of the hardest natural materials, is made into planks that are harder than oak.
- Cork, which is peeled off the cork tree every nine years without hurting the tree, is hard, water resistant, and comes in many colors and patterns.
- Palm board is made of laminated coconut palm strips and is very durable.
- Kirei board is made from compressed sorghum stalks.
- Wool, still the most naturally stain and fire resistant fiber for rugs and carpeting, is also highly durable, colored with natural dyes and backed with jute.
- Linoleum is all-natural and made from

linseed oil rosin, cork dust, limestone, wood flour and pigments pressed into a jute backing. It comes in many colors and patterns.

- Recycled rubber flooring is made from tires and can be recycled again after use.

Wall Options:

(With zero VOC paint eliminating emissions that can irritate skin, eyes and lungs.)

- Benjamin Moore's Ecosphere
- Sherwin Williams's Harmony or Health

Many of these products seem almost too good to be true.

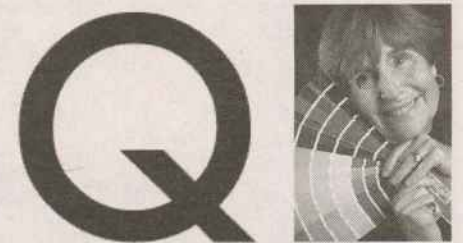
- Old Fashioned Milk Paint made with milk protein and earth pigments, comes in powder form that is mixed with water.
- Scalandre makes wallpaper without vinyl which emits VOCs and can trap moisture and encourage mold growth

Cleaning Supply

Options:

- Aubrey Organics makes a natural spray cleaner for tile and countertops that has an antimicrobial grain-alcohol base.
- Ecover is a Belgian made glass and surface cleaner that is plant-based and biodegradable.
- Knock-Out is a disinfectant that is registered with the EPA as safe for use on food preparation surfaces.

A general guideline to improve the quality



DECORATING

Mary Stearns (mstearns@queerlifeneews.com) is the owner of Orientations Ltd., which she co-founded in 1977. Orientations originally imported Korean chests and other Asian antiques and now offers a full range of interior design services. Stearns is an allied member of the American Society of Interior Designers.

of life in your home is to avoid indoor air pollutants. This can be achieved by using natural materials such as hard woods, fibers, plants and wool that do not emit VOCs.

A single green houseplant absorbs VOCs in a 100 square foot area; particularly good at doing this are spider plants and philodendrons.

Furniture made of solid wood and many older pieces don't emit VOCs. Arid cabinets, shelving or furniture made with particleboard emits formaldehyde, a known carcinogen. Sealing particleboard will reduce emissions.

Improving air quality, conserving energy and other resources, promoting reuse and recycling all make our homes and our planet more healthful, more economical and happier.

Note to Joe Raposo and Kermit: It *is* easy being green.

QLife SALES
 If you are quick, smart and ambitious, then QLife is looking for you! Maintain client base Establish new clients. Hourly + Commission Must have transportation.
Call Sales at 414-383-8200
or send resume to: editor@queerlifeneews.com

Thank you to our Generous Sponsors!

- Northwestern Mutual Foundation
- Miller
- Metavante
- MM INSURANCE ASSOCIATES, INC.
- Walgreens Specialty Pharmacy
- we energies WE
- CHASE
- bio scrip PHARMACY
- RETZ, HOLMAN, BUTALA, FINE LLP
- MILWAUKEE BALLET
- PHOENIX
- Shorewest
- MILWAUKEE PUBLIC THEATRE
- Johnson A FAMILY COMPANY

A benefit gala for the AIDS Resource Center of Wisconsin

MOULIN ROUGE

at Make a Promise

21 APRIL 2007

Milwaukee

To find out more information or to get your tickets today, visit us online at www.arcw.org or call Tad at 1-800-359-9272 ext. 1598

The Einstein of Sex I am My Own Woman

Societies in conflict such as Iran and minority, misunderstood groups often create forceful cinema. "The Einstein of Sex" and "I Am My Own Woman", directed by veteran gay German filmmaker Rosa von Praunheim combine dramatic storytelling with a provocative challenge to prevailing ideologies. They are an unforgettable look at how a government, at its most extreme, prefers to obliterate outsiders.

A prolific enfant terrible of New German Cinema, von Praunheim has directed over fifty films. His artistic name was formulated in the context of his country's political patrimony: Rosa, in memory of the pink triangle homosexuals were forced to wear in the war; von as a defiant gesture to old German nobility juxtaposed with Praunheim the slum where he grew up.

A documentary with dramatized

scenes, "I Am My Own Woman" depicts the life of Charlotte von Mahlsdorf, a transvestite who survived decades of indignities at the hand of her father, the Nazis and the East German government. Not only did she survive, she became a

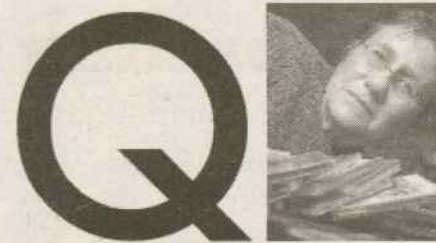
leading activist for the cause of sexual freedom and historical preservation.

In 1999, von Pundheim took on the biography of Dr. Magnus Hirschfeld, nicknamed by the American press "The Einstein of Sex". It is an elegant, historical piece, at times reminiscent of Visconti's *Death in Venice* and it chronicles Hirschfeld's battles - along with successes - in battling prejudice as a Jew, a physician specializing in human sexuality and a homosexual.

As a doctor, he saw at first hand the humiliation, suffering and often death that homosexuals faced due to fear of exposure. Hirschfeld became the leading champion of the repeal of Paragraph 175 (making homosexuality illegal "which in fact was

briefly repealed in the late 1920's just before the arrival of the Nazis but never put in place until 1994). The first to coin the term transvestite, Hirschfeld, a scientist documented that homosexuality is not a disease.

Decades before Kinsey's research, Hirschfeld's elegant clinic, The Institute of Sexual Science conducted cutting edge sex research and provided compassionate and often free medical care to both homosexual and heterosexual patients. Of note within the historical context, the contrast with Sigmund Freud who remained in the academic and medical professional ivory tower while Hirschfeld and his clinical staff went out to meet patients, conduct studies and offer treatment. In 1933, soon after the Nazis came to power the institute

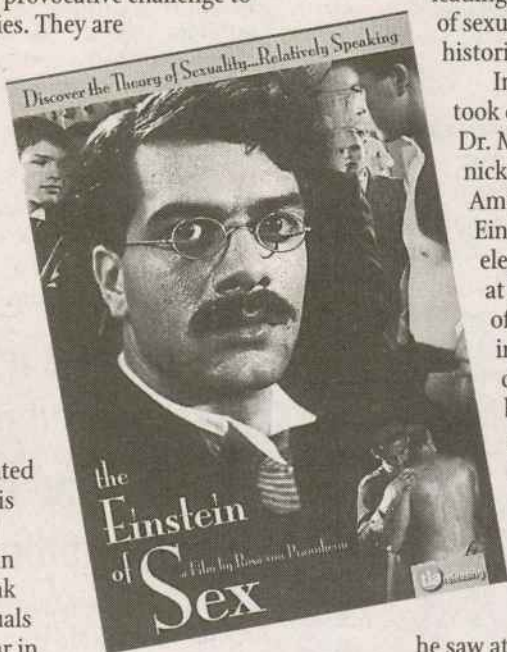


MOVIE REVIEW

Roxanne Kupfer has a lifelong love for movies and books which started in Paris decades ago. The mother of two creative children, she lives in Milwaukee and Cape Cod.

was ransacked, the research and almost everything else was destroyed. Hirschfeld died in 1935 in France.

Great people leave a mark and when they leave, the mark remains. No less a beast than Joseph Goebbels is said to have made the statement ...And it was Charlotte von Mahlsdorf and Magnus Hirschfeld, the former victims who left a mark not, of course, Hitler and his architects of hate and prejudice.



BRENDA LEWISON ATTORNEY

Law Office of Art Heitzer

633 W. Wisconsin Ave.

SUITE 1410

MILWAUKEE, WI 53203

414-273-1040

- LABOR
- EMPLOYMENT
- DISCRIMINATION
- ELECTION LAW

Everyday People
Extraordinary Lives

JOIN THE CROWD

Get the PrideFest Proud Crowd VIP Experience and support Wisconsin's largest, most visible LGBT event.

Proud Crowd donors will provide key support to PrideFest as it celebrates 20 years of Pride. All memberships include donor recognition and all-weekend access to the festival. *Premium memberships include exclusive receptions during PrideFest.* Show your support today at www.pridefest.com or by calling 414-272-3378.



JUNE 8, 9 & 10, 2007

Organizations and businesses: Reserve your booth in the Marketplace today! 414-272-3378 or www.pridefest.com

Celebrating Community Organizations

The Lesbian Alliance: A Space for Lesbians And Women Who Love Women

The Lesbian Alliance was born in the summer of 1989 when 150 Lesbians gathered in local Lesbian leader (say that three times fast!) Julia Kleppin's backyard in response to homophobic actions by the Milwaukee County Board of Supervisors, anti-Lesbian and Gay organizing by the religious right and the lack of positive Lesbian representation in the media and in the community.

The group's mission is to unify and organize the Milwaukee area Lesbian community. They do this by providing

education and role models to the Milwaukee community, impacting relevant issues in the political and legislative arena (as they affect Lesbians), and by providing meeting space and opportunities for more social contact and communications among Lesbians. The Lesbian Alliance also has an Education Fund that is devoted to raising awareness and understanding by, for, and about Lesbian women via educational activities.

A look at the Lesbian calendar in Milwaukee starts with the annual Womyn-Only Valentine's Dance a tradition that brings in nearly 200 women and offers a safe

and woman-centered environment where dancing with your partner, reconnecting with friends, and enjoying the atmosphere created by women always gets the year off to a good start. Monthly Game Nights/Potlucks are classic Lesbian Alliance activities that bring Lesbians of all ages together. Each year at PrideFest you can find the lovely ladies of LA serving up wine coolers at the Wine Cooler booth, and organizing a spectacular piece of woman-only space at Pride, the Lesbian Lounge.

Along with yearly events, the Lesbian Alliance works to provide new and original Lesbian and women-focused activities for our community. In the past this has been through initiatives such as the Young Lesbian Leadership Initiative (YLLI). Through YLLI, the Lesbian Alliance sponsored and put on activities aimed at young Lesbians between the ages of 21 - 31, including a focus on young professionals. As part of the YLLI effort, the Lesbian Alliance kicked off its quarterly "I Am Your Sister" workshop series of dialogue sessions about issues that impact all women's lives such as racism, sexism, feminism, and community building.

In May and June of this year the Lesbian Alliance, in collaboration with the Milwaukee Gay Arts Center (MGAC) will be sponsoring a Women's Art show called "Daughters of Sappho" - an exhibition of visual artwork created by women. An opening reception for this exhibit will take place on Saturday, May 26, 2007 from 5-8pm at the MGAC. Also this year, the Lesbian Alliance will kick off a



WOMEN

Jennifer Curtis has been an active member of the Milwaukee Lesbian community since 2002. She is also involved in the Lesbian, Gay, Bisexual, and Transgender Visioning Project, a local group that is working to create unified and respectful collaborations between all members of our diverse community. She lives with her wife, cat and dog and is currently pursuing her PhD in Urban Studies at UWM

women's music concert series with a focus on Lesbian musicians and performers.

To be a part of the excitement and to be sure that Lesbian voices are heard, Lesbian spaces are created, and Milwaukee's

The group's mission is to unify and organize the Milwaukee area Lesbian community

Lesbian community and culture are viable, consider being a member or supporter of the Lesbian Alliance. You can check them out at their website, www.lesbianalliance.org, or their MySpace page, www.myspace.com/lesbianalliance. You can also contact them at 315 W. Court Street, or by phone 414.272.9442.

OPENING THIS MONTH!

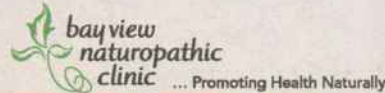
Bay View Naturopathic Clinic

A New Way to Mind and Body Health for Adults and Children

- Featuring:
- Kim Saxe, ND, Doctor of Naturopathic Medicine
 - Janie Goodall, PsyD, Licensed Clinical Psychologist
 - Kate Morse, CCH, HMC, Certified Classical Homeopath
 - Low-temperature Infrared Sauna for detoxification support
 - Naturopathic Hydrotherapy Treatments
 - Coming soon: Dr. Hauschka holistic skin care

Visit www.bayviewnaturopathicclinic.com for more info.

Now booking!
Call for your appointment!



3003 S. Kinnickinnic • (414) 292-3992
- just south of Outpost Natural Foods

Wedding Plans In Your Future,
...Maybe At Pridefest?
Let Us Help You Design,
...The Symbol Of Your Love!



www.c3-designs.com

C3 Designs
Award Winning Custom Jewelry Design
SAVE \$100 ON WEDDING BANDS
With This Ad, Offer Valid On Any Wedding Band Purchase Of \$200 or More

hand carved wedding bands - colored diamonds - bridal gifts
fancy colored golds - platinum - one of a kind designs

(414) 764-3892 www.c3-designs.com
8628 N. S. Market Place, Oak Creek, WI 53154

Our Hearts are Young and Gay

GAY PROM 2007

A sophisticated night of dancing, drinks & hor d'oeuvres benefitting the Milwaukee LGBT Community Center and SAGE Milwaukee.

May 11, 2007 ♦ 7:00 - 11:00 p.m.

Holiday Inn - Milwaukee Centre
611 West Wisconsin Avenue
Milwaukee, WI 53204 ♦ (414) 273 2950

\$45 per person ♦ \$80 per couple

All ages are welcome. Be sure to wear your most fabulous attire and don't forget to vote for your favorite "king" and "queen."

Tickets on sale now at Outwards Books, Gifts & Coffee, the Milwaukee LGBT Community Center and SAGE Milwaukee

A block of 10 rooms are available at the discount rate of \$119.00 through April 20, 2007. Contact the Holiday Inn - Milwaukee Centre to make your reservation today!



Milwaukee
LGBT Community Center
315 West Court Street
Milwaukee, WI 53212



ARTS CALENDAR

APRIL 5

Milwaukee LGBT Film/Video Festival & Milwaukee Art Museum Film present That Tender Touch. Lubar Auditorium, Milwaukee Art Museum, 700 N. Art Museum Dr. 6:15. Tickets & information: (414) 224-3840. Carl Bogner, director of the Milwaukee LGBT Film/Video Festival, will lead a talkback after the screening. \$5 Members, seniors, and students

APRIL 9-13

Spring Break Workshop at Danceworks. 9am-4 pm. Have fun while learning musical numbers and scenes from your favorite shows! Join members of the Danceworks faculty in this one week workshop that will keep you acting, singing and dancing your way through spring break. Call (414) 277-8480 or register online at www.danceworks1661.org

APRIL 13-20

The 29th Annual Latin American Film Series. Union Theatre, 2200 E. Kenwood Blvd. (multiple screenings) Info: (414) 229-4070 or <http://www.uwm.edu/Dept/CLACS/outreach/filmseries.html>. The 29th annual Latin American Film offers contemporary films highlighting the diversity of Latin America and the Caribbean.

APRIL 14

Wisconsin Cream City Chorus presents "Everything Possible" Unitarian Universalist Church, 1300 W North Ave. 7:30 pm. 20th Anniversary Concert includes awards, guest appearances & Milw premier of "Song of Wisdom from Old Turtle" a choral setting of Douglas Woods childrens book, Old Turtle. Features Guest soloist/Narrator Joel Kopischke & diverse guest singers from the community.

APRIL 15

Urban Cowboy -- The Musical: One night only! Uihlein Hall at the Marcus Center for the Performing Arts 7 pm. Urban Cowboy: The Musical is the story of Bud, a new breed of cowboy who's turning heads and looking for love in the biggest honky-tonk in the world. Tickets \$35 - \$50. Tickets may be purchased at the Marcus Center Box Office at 414-273-7206, online at www.MarcusCenter.org or through Ticketmaster at 414-276-4545 or by logging onto www.ticketmaster.com.

APRIL 18-MAY 6

Boulevard Theatre presents the Milwaukee Premiere of Harry Kurnitz's comedy, A Shot in the Dark. 2252 S. KK Ave, Bayview. Shows subject to availability and times subject to change—please call ahead to confirm. 414-744-5757

APRIL 19-29

UWM Musical Theatre presents West Side Story. Mainstage Theatre, 2400 E. Kenwood Blvd. Tickets: \$19 general/\$10 students & seniors Tickets & information: (414) 229-4308. Apr. 19-21 at 7:30 pm Apr. 26-28 at 7:30 pm. Apr. 29 at 2 pm.

APRIL 20

Gallery Night at Bucketworks presents "Cream City Photogs" - eight artists who met and formed via Flickr, a photo sharing website. They will present a sampling of their fine art work and photojournalism. Opening reception 5-10p.m. Bucketworks, 1319 N Martin Luther King Drive. Food and beverages will be served. The exhibition will run through May 4.

APRIL 21

Jahmes Finlayson, Louisa Loveridge-Gallas, Holly Haebig, Suzanne Rosenblatt, Harvey Taylor, and special guest: Musician & Poet KT Rusch 8pm-The Coffee House 631 N. 19th Street. Donation: \$5.00 Benefit for Wellspring Contact: Suzanne Rosenblatt 414-964-0084 or Harvey Taylor 414-265-2549

APRIL 27

Experimental Film/Video Series at Woodland Pattern. 7:00 p.m. ProjectorTalk (Ages 6 & Up) Woodland Pattern Book Center, 720 E. Locust St. \$2 admission Information: (414) 229-4758 or crlebog@uwm.edu. Live film performances by Grant Wiedenfeld.

APRIL 27

Drumdance: the rhythm continues through us-Milwaukee Public Theatre's Ajula Performance Troupe presents an original show featuring music, dance, mime and puppetry about taking care of the earth. Lincoln Center of the Arts, 820 E. Knapp, Milwaukee. 7:00 pm Tickets: \$5 for adults and \$3 for children 12 & under, seniors, and people with disabilities. For tickets or more information contact 414-347-1685 or www.milwaukeepublictheatre.org

THROUGH APRIL 30

Katie Gingrass Gallery. Composition 6: Contemporary Photography, exhibit features unique images from 6 different artists, occurring daily, through April 30. Information: 414-289-0855 Katie Gingrass Gallery, 241 N. Broadway

Deadline for May is April 20th.

Joseph Siegworth
MasterWork
Massage

- Relaxation
- Deep Tissue
- Lomi Lomi
- Cranial/Sacral
- Polarity
- Nutrition
- Master Reiki

(414) 839-6682



J. Grant Painting
 Call for Estimates and ask me about Special Detailing

Joyce Grant
 Cell: 414.232.5767

This Month in Wisconsin LGBT History - April

By Don Schwamb

35 years ago-- 1972-- Popular bars at this time include The Mint Bar, The Cove, Club 546, and the River Queen, and new bars opening in 1972 include Wreck Room, the Shack (Kenosha), JoDee's (Racine).

30 years ago-- 1977-- Madison Committee for Gay Rights plans 1st annual Gay Arts Festival; Your Place bar celebrates 12th anniversary; 26 year old Jim Yeadon, Madison's 1st openly gay city alderperson, wins full term on city council (the 3rd publicly "out" politician ever to be elected nationally!); Down Under Club bar in La Crosse is born.

15 years ago-- 1982-- SisterMoon Bookstore celebrates 5th anniversary (it will close about a year and a half later when the building is sold)

20 years ago-- 1987-- UWM holds 5th annual Gay and Lesbian Film Festival

15 years ago-- 1992-- Wreck Room hosts 1st annual Mr. Wisconsin Drummer contest, and Argonauts of Green Bay hosts first Wisconsin Daddy contest.

10 years ago-- 1997-- Firebirds leather club holds dinner party to celebrate beginning their 3rd year; Popular bars at the time include South Water Street Docks, 3B's, Just Us, Zippers, Manoeuvres and Scandals (both in Madison), Za's and Brandys II (both in Green Bay).

Find out more about these and other happenings at the Milwaukee LGBT History Project web site: www.mkelgbthist.org (or just "WisconsinGayHistory.org")

Hyatt Legal Plan Members Welcome **Attorney at Law Warren J. Klaus**

Partnership Agreements, Probate/Trusts, Wills, Revocable Living Trust, Title XIX/Estate Planning, Durable Power of Attorney, Non-Probate Transfers, Real Estate, Small Business Matters, Residential Offers created while you wait

OFFICE:
 5665 S. 108th St. Hales Corners, WI 53130
 (414) 529-2800 fax (414) 529-6447

DOWNTOWN: Milwaukee Bar Association
 424 E. Wells Street Milwaukee, WI 53202

FREE First Consultation in PERSON or via EMAIL wklaus8163@aol.com

Variety is the Spice of Life

Highlights of the 2007-2008 Theater Season

As our seasons change; so does the announcement of our upcoming 2007-2008 theater season. It is always a pleasure to see several major publications announce season highlights. Now, as someone who also has a professional theater company; I wonder why all of this is kept so private. With more networking between the many companies in our strong Milwaukee theater, we could avoid duplicating the same shows. I sat

for two days at the Milwaukee General auditions, and many top companies attended. Not once did I hear any company discuss their 2007-2008 season. It is all hush, hush, and very private. Networking would surely help; but more than anything, one can see that this is a Business!

There are several highlights and premieres. It is a pleasure to see that Skylight premieres the all-time Christmas favorite **WHITE CHRISTMAS**. Chamber theatre will bring us **MOONLIGHT AND MAGNOLIAS** by Ron Hutchison. This farce will focus on the directors, as they plan the MGM classic **GONE WITH THE WIND**. Windfall Theatre will premiere **RABBIT HOLE**. This show by David Lindsay-Abaire recently won a Tony award. **DOUBT** by John Patrick Shanley; another Tony winner will premiere at Milwaukee Repertory Theater.

One extremely exciting show to watch for it **FAT PIG** by Neil LaBute. This brilliant play will premiere at the highly successful Renaissance Theaterworks. **DOG SEES GOD** by Bert V. Royal is an unauthorized satire covering what happened to the "Peanuts" gang as they became teenagers. RSVP Productions will bring you the premiere at the Astor Theatre. Come see what happens to the teenage blockhead.

A Few Happy Returns

Several years ago I saw an exciting production of the musical **CHESS**; and it is a pleasure to see the Off The Wall Theatre will mount a new, exciting intimate version. The Milwaukee Repertory

Theater will revive their highly successful **THE NORMAN CONQUESTS** by Alan Ackbourn. Several seasons ago the Rep did a very clever 3-character version of **CYRANO**. This season they will stage a full-scale production of **CYRANO DE BERGERAC**.

Unfortunately there are several companies that announced the same productions. As in the past, once the announcement goes to press, several companies will change their original seasons to avoid producing the same plays. Variety is the spice of life, and we do have a very interesting blend of theater for 2007-2008. If you have not experienced live theater; it is a wonderful experience. Enjoy the various arts that our town has to offer.

April shows Rain in

Last month our city was swamped with shows. It was a period of very difficult Milwaukee weather. Our local News Media kept telling everyone to not go out. Well, much of the hype never happened. Because of this, many of you missed some wonderful productions - and several companies lost money at their box office.

As I said in our last issue, please go see **THE NERD** at the Stiemke Theater. Larry Shue is a legendary playwright; and premiered his classic works **THE NERD** and **THE FOREIGNER** at the famous Milwaukee Repertory Theater. Our Rep Theater will also present **TARTUFFE** this month. The Milwaukee Chamber Theater will feature **A WALK IN THE WOODS**.

Then our Milwaukee Shakespeare will bring us **HENRY IV**. (Wow, lots of theaters



THEATER

Ray lives on the Lake on the East Side. He is artistic director of RSVP Productions at the Astor Theatre. He also directs theater in Whitefish Bay, and works as a free-lance director, and theater teacher. Highlights include working with Lana Turner, and Mickey Rooney.

with Milwaukee in the title!)

The exciting Bay Players on the North Shore will bring you a fun 50's detective spoof **RED HERRING**. Come join the fun! Sunset Playhouse performs the hilarious farce **THE AMOROUS AMBASSADOR**.

As the weather gets better, please support the area bars, and all those fine local theater companies! Next month I plan to interview the glamorous and sensational **DEAR RUTHIE**. I will discuss her career, and her upcoming productions.

Last MONTH's Trivia Answer

Henry Mancini composed **THE DAYS OF WINE AND ROSES**.

This Month's Trivia Question

Bing Crosby and Fred Astaire starred in the movie **WHITE CHRISTMAS**?

My Aunt Blanche plans to audition for the lead in **HIGH SCHOOL MUSICAL II**.

Q CLASSIFIEDS

JOBS

Seeking GM to do light cleaning of 1BR apt. Every 2 weeks. Extra hours available. References necessary. Mark (414) 225-9683.

Writers needed for Milwaukee's gay news leader. Call 414-383-8200. Send resume to editor@queerlifeneeds.com

ANTIQUES

Tip Top Atomic Shop features Milwaukee's most affordable post-modern furniture. 50's kitsch, household items, funky lamps, retro apparel, and more. 2343 S. Kinnickinnic Ave, Milwaukee WI 53207. 414-486-1951

BULLETIN BOARD

Coffee anyone: Be the first on your block to own a genuine Queer Life coffee mug. Wake up each morning a see the cheerful rainbow logo. Or just stop in and have a cup of coffee with the staff. \$10.00 each or 2 for \$15.00. Pick up only at Q Life News office 2266 N. Prospect Ave. Suite 200. P.S. We like chocolate.

Q-Classifieds are only \$30 for up to 30 WORDS!

WRITE AD COPY HERE, THEN FAX TO 414-383-5066 or MAIL TO: 2266 N. Prospect Ave, Suite 200 Milwaukee, WI 53202

1 issue 40 words or less is \$30 (add 20 cents for each word over 40) \$

Number of issues ad should run:

TOTAL: \$

Payment by: VISA MasterCard Check Money Order

Card #

Exp. Date:

Name:

Phone:

Address/City/State/Zip:

Signature:

E-mail:

Signature required for all ads to verify certification of lawful placement, legal age, and credit card authorization. All ads submitted must have all information completed with a verifiable address (no PO box), area code, and verifiable daytime phone. Your phone number may be necessary if some of the information needs clarification. This information is strictly confidential. For personal ads, your signature attests that your request to meet other persons is at no expense on their part. Q LIFE reserves the right to place ads where most appropriate. Q LIFE will grant credit only for any ad cancellation prior to deadline or errors in ad copy by Q LIFE. There is a \$35 charge for checks returned NSF.

Fax: 414-383-5066 or Mail to: 2266 N. Prospect Ave, Suite 200 Milwaukee, WI 53202 Deadline for Classifieds are the 20th of each month

CIRCLE ONE CATEGORY:

- Accounting
- AIDS/HIV Services
- Antiques
- Automotive
- Bed & Breakfast
- Bulletin Board
- Buy/Sell
- Counseling
- Employment
- Health Services
- Home Repair
- Housing
- Jobs
- Massage
- Model/Entertainer
- Moving
- Personal Ad
- Pets
- Psychic
- Real Estate
- Resorts
- Roommates
- Services
- Storage
- Travel
- Other



La Page Folle

"Gay Glossies"

Across

- 1 Lesbians at the White House Easter Egg Roll, e.g.
- 6 Biweekly tide
- 10 Breaks off
- 14 Hugh, who plays the "Simon" of *American Dreamz*
- 15 Ticklish doll
- 16 *Love Songs* poet Teasdale
- 17 Composer Erik
- 18 Musical in which Harvey played Edna
- 20 Sharon Stone movie about a gay magazine?
- 22 U-turn from WSW
- 23 Skirt edge
- 24 Beebo Brinker creator Bannon
- 27 Plug away
- 30 Cleaned off a foamy head
- 35 Open position ?
- 37 About, in memos
- 39 Shaft of a knight
- 40 Have a party for a lesbian magazine?
- 43 Purchase from good-vibes.com
- 44 Start of a counting rhyme
- 45 Lovers' quarrel
- 46 Nureyev's homeland
- 48 Son of Eric the Red
- 50 The bus stops here (abbr.)
- 51 Rd. where they toll you so
- 53 Not poz
- 55 Gay magazine for writers?
- 62 Turns a bear white?
- 63 Roz of *Frasier*
- 65 Is unlike Dorian Gray
- 66 Brain section
- 67 Response to an on-line personal
- 68 Things to connect
- 69 Fly like a falcon
- 70 Kidney-related

Down

- 1 Classic Brit cars
- 2 Gaza Stripper, e.g.

- 3 ___ Hari of espionage
- 4 Biscotto flavoring
- 5 Members of Gertrude's family
- 6 Old fruit drink
- 7 Star quality
- 8 UPN reality series ___ in the City_
- 9 "You're the Top" composer
- 10 Locker room shower?
- 11 Undercover crack investigator, perhaps
- 12 Shoot relative?
- 13 Two cents worth
- 19 "Queer as a three-dollar bill," e.g.
- 21 *As You Like It* woman
- 24 John Jacob, who went to the bottom with the Titanic
- 25 '60s jacket style
- 26 Out group
- 28 ___ Upon a Mattress_
- 29 What Oliver begged for more of
- 31 Collars, as a perp
- 32 Diana Davies output
- 33 Big splash
- 34 Where Old Man River makes his deposits
- 36 Peter Rabbit's sisters
- 38 Sea eagle
- 41 Michelle Tea or Augusten Burroughs
- 42 Engaging in rivalry
- 47 Romantic lesbian comedy ___ Shower_
- 49 Word after bottom
- 52 Toy musical instrument
- 54 Shriveled old man of folklore
- 55 Gay cable network
- 56 "Why should ___ you?"
- 57 Soviet news service
- 58 C&W gay fave McEntire
- 59 Belgian border river
- 60 "Mr. Reese Witherspoon" Phillippe
- 61 *East of Eden* director Kazan
- 62 Beatnik's abode
- 64 Flightless wing

Answers on page 21.

Summer Start with Peach Cobbler

It's a beautiful warm day. I for one, have spring fever, and its hitting me with a vengeance. After spending the last few months cooped up inside and driving around in a salt covered car, I am overjoyed by the warm air, and the \$5.00 car wash down the street. Of course, I don't want to jinx myself, but I'm pretty sure we haven't seen the last quite yet of the nasty cold weather. Wisconsin's climate is a goofy one, and knowing us, we'll get hit with snow in June. But enough of that! While this weather lasts, I am getting a jump-start on some of my favorite summer treats. My grandmother lived in Lexington, KY, and when visiting her in my youth, I would hope and pray she would make her tasty peach cobbler for us. Granny Pettit never let us down. Here is my attempt to recreate that glorious treat from my youth



COOKING

Get that oven preheated to 400 degrees. Take the 1c. Sugar, and peaches and toss them together. Pour sugary peaches into a well-greased 1 1/2 quart oblong baking dish. Sprinkle 3 tablespoons flour over the fruit and dot with butter or margarine. Set aside.

Sift together flour, 2 tbsp. sugar, baking powder, salt, and cream of tartar into a bowl Cut in the 1/2c. butter or margarine with a pastry blender or fork until the mixture resembled coarse meal. Add buttermilk, mix lightly and form dough into ball. Roll the dough out 1/4 inch thick on a floured board. Cover fruit with the dough. Trim the edges nice and pretty. Cut a vent (Granny always made a "v" - but not touching) in the center of the dough, sprinkle extra sugar on top, if desired. Bake in a 400 degree oven about 40 minutes or until crust is golden brown.

The beauty of this is you can serve it warm - with vanilla ice cream, you can't beat it, or you can serve it cold -with vanilla ice cream, why not!

Granny Pettit's Peach Cobbler

- 5 c. peeled, sliced peaches
- 1 c. sugar
- 3 tbsp. flour
- 3 tbsp. butter or margarine cut up in pieces
- 2 c. all purpose flour
- 2 tbsp. sugar
- 4 tsp. baking powder
- 1/2 tsp. cream of tartar
- 1/2 tsp. salt
- 1/2 c. butter or margarine
- 1/2 c. buttermilk

1	2	3	4	5		6	7	8	9		10	11	12	13
14						15					16			
17						18				19				
	20				21									
				22					23					
24	25	26		27		28	29		30		31	32	33	34
35			36		37			38		39				
40				41					42					
43						44					45			
46					47		48			49		50		
				51		52			53		54			
	55	56	57				58	59				60	61	
62											63			64
65						66					67			
68						69					70			

Celebrating 20 years of PRIDE!

MAIER FESTIVAL PARK ON MILWAUKEE'S LAKEFRONT

JUNE 8, 9 & 10, 2007



Friday, June 8th



COMEDIAN
KATHY GRIFFIN

< Comedian **Kathy Griffin**,
Star of "My Life on the D-List"
and "Suddenly Susan"

Featuring **Cascada**,
"Everytime we touch" >



CASCADA

Saturday, June 9th

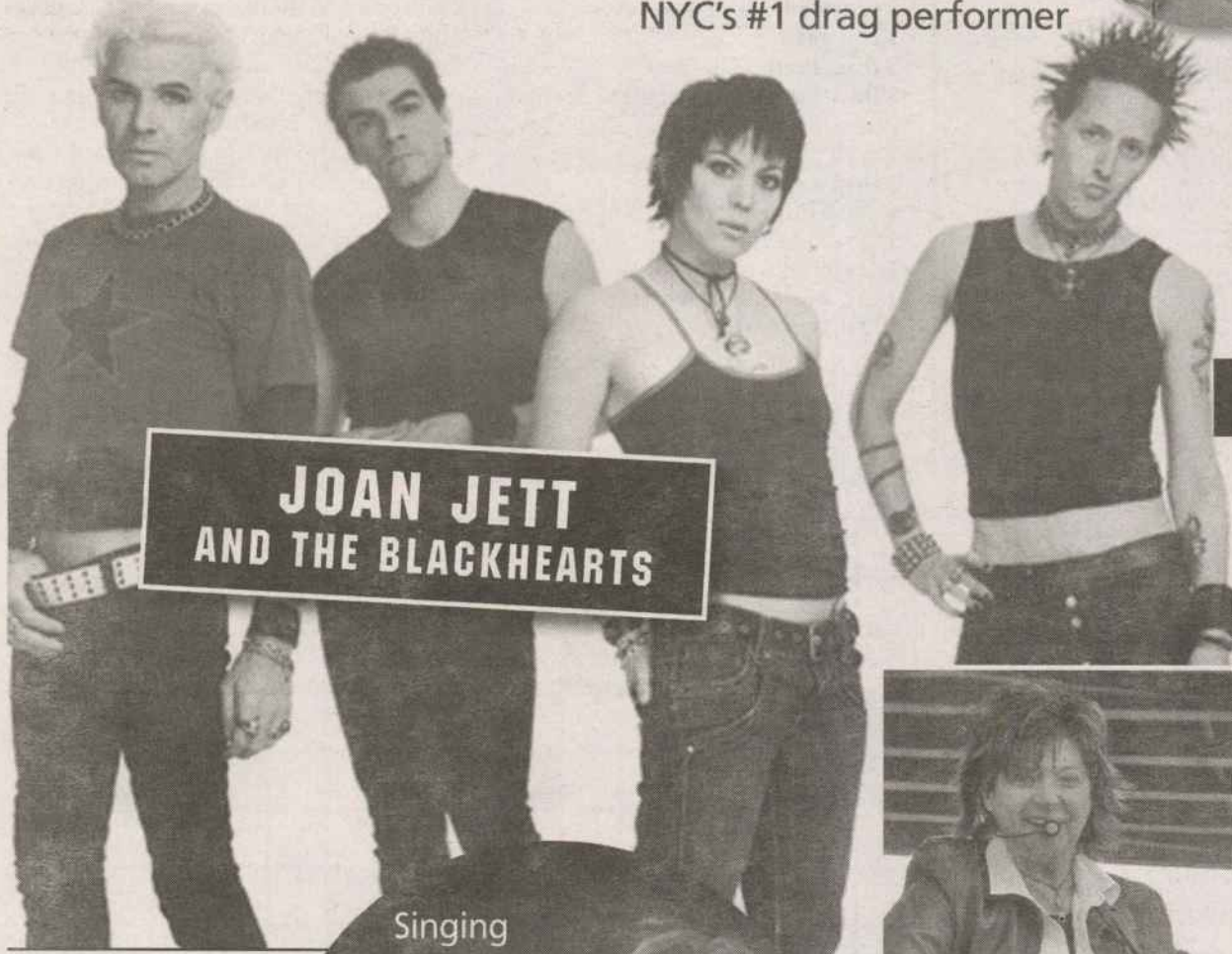
Jammin' 98.3 welcomes
Eight-time Grammy Award®
winner **Chaka Khan** >

With **Benassi Bros.**
featuring **Dhany** >

Plus **Sade Pendarvis**
& **Peppermint**,
NYC's #1 drag performer



EIGHT-TIME GRAMMY
AWARD WINNER
**CHAKA
KHAN**



**JOAN JETT
AND THE BLACKHEARTS**

Sun., June 10th

< **Joan Jett and the Blackhearts**
With **Ronnie Nyles** and the
Krash Band >

Plus Comedian **Vickie Shaw**
Boi Toiz and **Gurl Toiz** on
Broadway



Singing
"Total Eclipse
of the Heart"
LIVE for
the Sunday
Tea Dance

NICKI FRENCH

Volunteer
today at
pridefest.com or by
calling 414-272-3378.

More information available at
www.pridefest.com.
Tickets and discount weekend
passes on sale soon.

Everyday People
Extraordinary Lives
Support **PrideFest**, Wisconsin's
largest LGBT celebration.
Join the 2007 Proud Crowd today at
www.pridefest.com

