

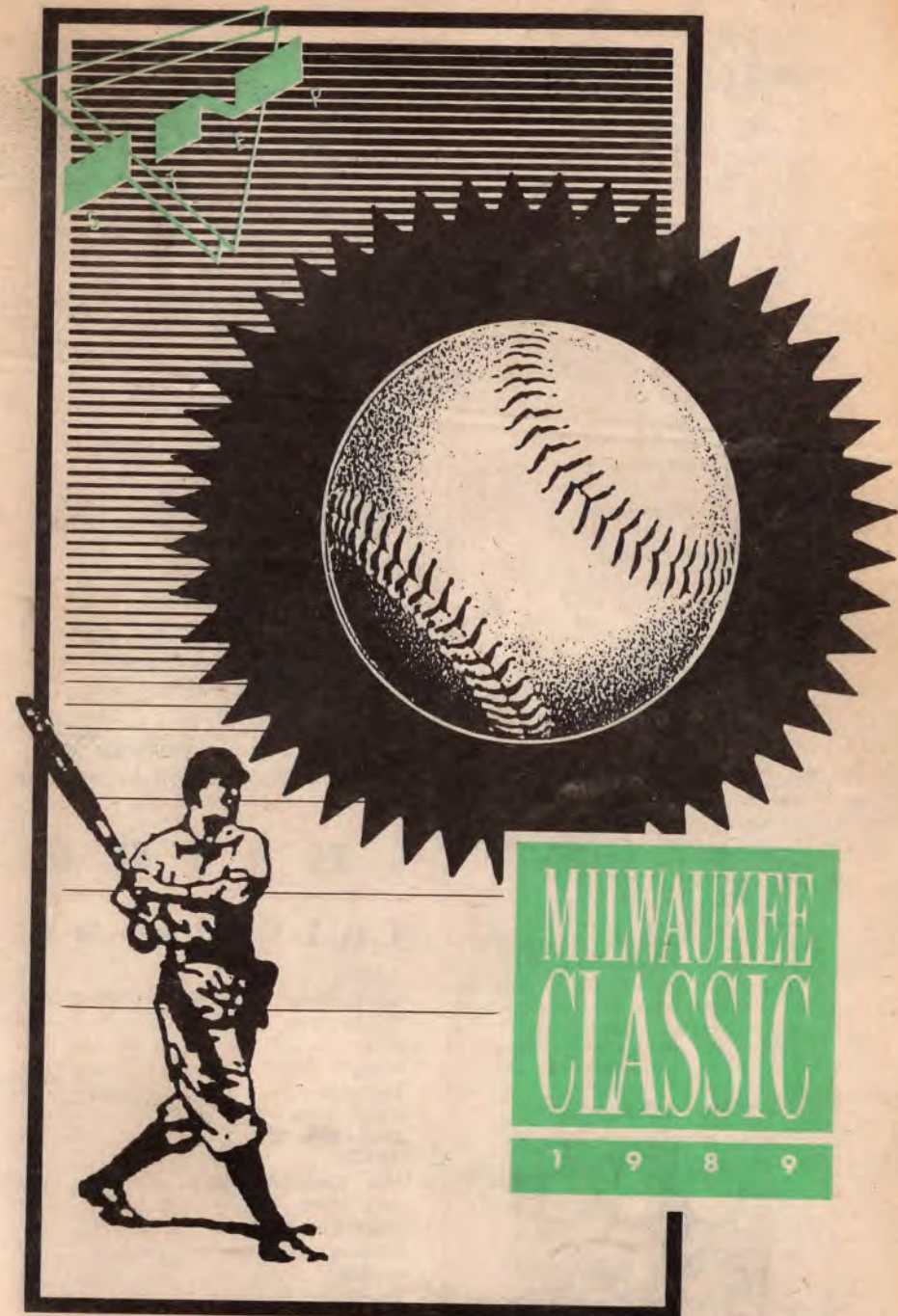
## where can you...

- > ENJOY FINE WINE OR CHAMPAGNE BY THE GLASS?
- > CHOOSE FROM AN EXTENSIVE MENU OF BLENDED AND ICE CREAM DRINKS?
- > LISTEN TO A WIDE VARIETY OF MUSIC ON C.D.?
- > ENJOY FRESH JUMBO SHRIMP?

... and still be only steps away from the two hottest dance floors in town?

in **Jazz** of course!

Wednesday — Sunday  
801 - 805 S. 2nd Street • Milwaukee • 383-8330



Volume 6, Issue 10

May 25-June 7, 1989

# In Step

225 S. 2nd St., Milwaukee,  
WI 53204, (414) 278-7840

**Publisher/Editor**

Ron Geiman

**Editorial Assistant**

Tim Hensiak

**Columnists**

Darla Kashian, Tim Hensiak,  
Kevin Michael, W.W. Wells III,  
R.D. Thompson, Jeff Clark

**Cartoonists**

Tom Rezza

Robert D. Arnold

**Photography**

Doug Tuskiewicz

**Typesetting**

C.S.P., Incorporated

**Ad Design**

Arlington House

**Typist**

Mary Maliborski

**Printers**

Newsweb, Inc.

In Step Magazine is published bi-weekly, every other Thursday. © 1989 In Step. All rights reserved. Publication of the name or photograph of any person, organization or business in this magazine does not reflect upon one's sexual orientation whatsoever. All copy, text display, photos and illustrations in advertisements are published with the understanding that the advertisers are fully authorized, have secured the proper consent for the use of names, pictures and testimonials of any living persons, and In Step Magazine may lawfully publish and cause such publication to be made, and the advertisers agrees by submitting said advertisement to indemnify and save blameless In Step Magazine from any and all liability, loss and expense of any nature arising from such publication.

INSTITUTIONAL MEMBER



# cover story

This issue's cover design, saluting the 10th annual Milwaukee Classic Softball Tournament was donated by Carol who wishes "Good Luck" to all the teams in the tournament.

Carol asked that the \$25 In Step pays for cover art be donated to the Milwaukee AIDS Project.

Thank you Carol for a great piece of art, and for your generosity to MAP.

# note:

**DEADLINE**

for the next issue

Covering June 8-21, 1989

is 7p.m. Wednesday, May 31st

**The Above Deadline Will**

**Be Strictly Enforced!**

That issue will cover Milwaukee's Lesbian/Gay Pride Week Activities, including Milwaukee's first annual Pride Parade and Rally on June 17th.

# inside

## this issue

Briefs .....	4
Group Notes .....	12
Health .....	20
Arts .....	22
Steppin' Out .....	26
Calendar .....	28
Darla's View .....	35
Juicy Bits .....	38
Inklings .....	40
Milw. Classic Section .....	42
Jock Shorts .....	48
Life's A Drag .....	49
Classics .....	51
Graffiti .....	53
The Guide .....	56
Gay Side Cartoon .....	62

63



**DIAL NOW GUYS ARE WAITING!**  
**1 900 999-3131**

REAL PEOPLE LTD. DREAMLINE-YOU MUST BE 18 OR OLDER 75 CENTS PER MINUTE-95 CENTS THE FIRST MINUTE

**SIDE TRACK**  
THE VIDEO BAR  
3349 N. Halsted  
Chicago

**gay side** Original Cartoon by Tom Rezza



An officially estimated crowd of 7,500 marched on Madison for Lesbian and Gay Rights and Pride.

# BRIEFS

BULLETIN  
BULLETIN  
BULLETIN

## Madison March Weekend: "Big Success"

By Ron Geiman

An officially estimated 7,500 Gays/Lesbians/Bi-Sexuals and their friends, families and supporters marched through downtown Madison May 6th in support of Gay and Lesbian rights issues despite unseasonably cold temperatures. As part of the four day weekend of Gay/Lesbian activities, Wisconsin saw the unveiling of the Names Project Quilt in its first appearance in the state.

The **Gay and Lesbian Visibility Alliance [GALVANize]**, organizers of the weekend of events were more than satisfied with the turn out, especially considering thermometers never rose above the mid 30's the day of the March. "Come out for change!" was the theme for the weekend, and come out people did.

They came out on Thursday, May 4th for Lesbian photographer JEB's multi-image show of the '87 March on Washington, and a concert by the infamous Gay singing duo, Romonovsky and Phillips. On Friday, and again on Saturday it was to hear Karen Thompson tell about her struggle to be reunited with her lover, Sharon Kowalski, who was disabled in a car accident. Kowalski's parents claimed guardianship, and refused to allow Thompson to see their daughter, and rejected the acceptance of their relationship. After Kowalski's Friday evening presentation, with over 500 in attendance, the audience proceeded to the Quilt opening ceremony in a candlelight procession.

### QUILT

The Quilt opening ceremony drew an estimated crowd of 4,000 people. The Fieldhouse, where the Quilt was housed, holds 12,000 basketball fans, and it was nearly one third full for the heart-rending unfolding of 200 Quilt panels. Madison AIDS Support Network (MASN) director Marge Sutinen said of the ceremony, and

March Weekend in general: "It was a sea of humanity...people who cared, the compassion, and the love shared between strangers... it was the most energizing event I've seen in a long time." The Quilt volunteers, dressed in white, gently unfolded the quilt sections in a dignified, choreographed manner, as various 'Readers of Names' recited names of those people whose quilts are part of the 'national monument.'

A nefarious rumor about a 'bomb threat' turned out to be nothing but a left-over firecracker. Sutinen said when queried about the bomb, "I'm glad you asked about that, this is from my mouth and the mouth of U.W. security: It was a left-over firecracker from a concert three weeks previous. Someone had discovered this firecracker laying on the ground across from the speakers platform and brought it to the attention of security and that's all it was." The rumor was persistent the next day during the March, but totally unfounded.

As of February, 1989, the national Names Project AIDS Memorial Quilt contained 8,824 3 by 6 foot panels, representing approximately 18% of the deaths from AIDS in the U.S. In other words, for each panel in the Quilt, 4.5 people have died. Inspired by the folk art traditions of quilting and sewing bees, the Names Quilt is an international memorial to those who have died. Each of the thousands of panels was created by the families, friends and lovers of those lost to the epidemic. The Quilt was last displayed in its entirety in October '88, the one year anniversary of its unveiling at the National March for Lesbian and Gay Rights in Washington, D.C.

The Madison Quilt display continued on Saturday from 10am until 6p.m., and on Sunday from 10am until 5. At 5p.m., a closing ceremony, attended by over 1,500,

contd. on page 6

# GET OFF

- 1 NATIONWIDE CONFERENCE**  
... with up to 8 uninhibited guys.
- 2 MAN TO MAN**  
... for a one on one connection with the next caller.
- 3 NEW VOICE-ADS\***  
Hear guys tell you what they want. Leave your answer for them in complete privacy anytime.
- 4 RECORD**  
... your nationwide VOICE-AD\*  
Retrieve your replies anytime from your private mailbox.
- 5 BACK ROOM**  
... for privately coded connections.

# 1-800-727-GUYS



Only 95¢ per minute, \$1.50 1st minute.  
No charges appear on your telephone bill  
- no operators. Dial direct from anywhere  
in the U.S. Visa or MasterCard. Discreetly  
billed by PhoneAmerica, Inc.



61

**MILWAUKEE (414)**

contd. from page 59

- 13 This Is It (M) 418 E. Wells ..... 278-9192
- Tina's RTI (Wm.D) 1843 N. 20th ..... 933-7577
- 3 Triangle (M,D,V) 135 E. National ..... 643-9758
- 11 Wreck Room (M,L/L) 266 E. Erie ..... 273-6900
- 9 Your Place (Mw,D) 813 S. 1st ..... 647-0130
- 4 Shaft 219 (M,L/L) 219 S. 2nd ..... 271-3732

**RESTAURANTS**

- Beer Garden** (lunches, dinners, cocktails)  
3743 W. Vliet ..... 344-5760
- Cafe Macaw** (Dinner-Closed Monday)  
2000 S. 8th ..... 384-7399
- 11 Glass Menagerie** (lunches, dinners, cocktails)  
124 N. Water ..... 347-1962
- Melange Cafe** (lunch, Fri. & Sat. dinner)  
720 Old World 3rd ..... 291-9889
- Walker's Point Cafe** (after bar hours)  
1106 S. 1st Street ..... 384-7999

**RETAIL**

- Bruce Paul Goodman** (clothier)  
Historic 3rd Ward, 309 N. Water ..... 289-0123
- Valerie's** (art & antiques) 1200 S. 1st ..... 645-3177
- Water St. Gallery** 144 N. Water ..... 271-1231
- Seven Seas Aquatics** (fish, birds, supplies)  
215 W. Florida St. .... 272-7966

**NORTH CENTRAL**

- Gay/Lesbian Support Group**  
Box 247A, 1411 Ellis Ave., Ashland 54806
- Northland House** (bed & breakfast inn)  
609 Hwy. 77, Pence 54550 ..... (715) 561-3120
- Mid Wisconsin Gay Alliance (MGA)** (social group)  
P.O. Box 1016, Stevens Point, 54481
- UWSP Gay People's Union**  
Slap Box 30, Stevens Point, 54481 ..... 346-3698
- Lesbian/Feminist Book Club** Box 821, Marshfield 54449
- Central Wisconsin AIDS Support Group (CWASG)**  
Box 2071, Wausau 54402-2071
- Platwood Club (MW,D)** Hwy 10W, Stevens Point
- R-Bar (MW,D,F)** 102 Scott, Wausau ..... (715) 842-3225
- Wausau Narcotics Anonymous**  
(ask for gay meetings) ..... (715) 536-LIFE

**RACINE/KENOSHA**

- Club 94** (Mw,DJ)  
9001 120th Ave. (Hwy C) Kenosha ..... 857-7900
- JoDee's** (MW,DJ)  
2139 Racine St. (Hwy 32) Racine ..... 634-9804

- Gay/Lesbian Union of Racine** 625 College, 54303
- Southeastern WI AIDS Project (HIV / AIDS support)**  
5380 3rd Ave., Suite 101, Kenosha ..... 658-3154

**SOUTH CENTRAL**

- Jeanie's** (MW,DJ,F)  
530 E. Grand, Beloit ..... (608) 362-9717
- The New Leaf** (MW,D)  
Hwy 51 S., Rt. 7, Janesville ..... (608) 752-5650

**WAUKESHA (414)**

- Window to the World Service, Inc.**  
P.O. Box 632, 53187 ..... 542-5735
- I.T.C.** (tax, accounting svc.)  
N14 W23777 Stone Ridge, Suite 120 ..... 547-3363

**WESTERN**

- Memories** (Mw,D) 314 S. 4th, LaCrosse ..... (608) 782-9061
- LaCrosse L/G Support Group** ..... (608) 782-1274
- LaCrosse Parents & Friends of Gays** ..... (608) 782-6082
- Leaping LaCrosse News** Box 932, L.C. 54602-0932
- New Beginnings** (monthly newsltr.) Box 25, Westby 54667
- U.W. Eau Claire Gay/Lesbian Organization**  
UW-EC, Union Box G.L.O. 54701
- Downtown Express** (MW,D,F)  
101 Graham, Eau Claire ..... (715) 834-8822

- Gay & Lesbian Alliance** P.O. Box 111, Platteville 53818
- TRTO** (W) 802 Tower, Superior ..... (715) 392-5373
- The Main Club** (MW,D)  
1813 N. 3rd, Superior ..... (715) 392-1756

**STATEWIDE**

- Hag Rag** (bi-monthly lesbian/feminist paper)  
P.O. Box 93243, Milwaukee 53203
- In Step** (bi-weekly lifestyle magazine)  
225 S. 2nd, Milwaukee 53204 ..... (414) 278-7840
- North Central Wrestling Federation**  
Box 8234, Madison, 53708 ..... 244-8675
- Among Friends** (bi-monthly news magazine)  
P.O. Box 426, Madison 53701
- AIDS Toll Free Hotline** (outside Milwaukee)  
Mon. - Fri. 9 a.m. - 9 p.m. .... 1-800-334-AIDS
- Wisconsin Light** (bi-weekly G/L newspaper)  
1843 N. Palmer, Milwaukee ..... 372-2773

**OUT OF STATE**

- National Gay & Lesbian Crisis Line/AIDS 800**  
(gay hotline) ..... 1-800-221-7044
- Bijou Theatre** (all male adult films)  
1349 N. Wells, Chicago ..... (312) 943-5397
- Sidetracks** (M,V) 3349 N. Halsted, Chicago(312) 477-9189
- Berlin** (MW,V,DJ) 954 W. Belmont, Chicago(312) 348-4975
- Little Jim's** (M,V.) 2501 N. Halsted, Chicago(312) 871-6116
- G/L Students/Friends of N.M.U.**  
Box 62, Univ. Center, N.M.U.  
Marquette, MI 49855 ..... (906) 228-6018
- Douglas Dunes Resort** (Mw,DJ,F)  
Blue Star Highway, Douglas, MI ..... (616) 857-1401
- Fairness Fund** ..... 1-800-257-4900
- AIDS Issues Op. 9184; G.L. Issues Op. 9188
- North End** (M) 3733 N. Halsted, Chicago ..... (312) 477-9999
- Touche'** (M,L,L) 2825 N. Lincoln, Chicago (312) 549-7770
- Windy City Gay Chorus** ..... (312) 728-SING
- AIDS Care Network (ACN)**  
P.O. Box 6573, Rockford, IL 61125-1573  
..... (815) 962-5085 (ext. 228)



The Names Project Quilt sections were un-folded in a solemn ceremony at the UW Fieldhouse during opening ceremonies of the Quilt's Wisconsin premier. Bottom - several local panels were on display.



Madison-area openly Gay/Lesbian politicians gathered at the March Weekend Rally. [L to R]: John Dean [Trustee Village of Shorewood Hills]; Jim McFarland [Madison City Council, 1 of 2 openly gay elected Republicans in the country]; Kathleen Nichols [Dane Co. Bd.]; Tammy Baldwin [Dane Co. Bd.]; Richard Wagner [Chair, Dane Co. Bd., and highest ranking openly gay elected official in WI.]; Ricardo Gonzales [Madison City Council, first open gay elected Hispanic official in the Country]; and Earl Bricker [Dane Co. Bd.].

contd. from page 4

included a presentation of eight new, local panels to a representative from the Names Project for incorporation into the National Names Quilt.

Portions of the Quilt were also displayed at the Madison Art Center as part of its 'The Art Quilt' show.

The UW Memorial Union was host to a series of workshops centered around Gay/Lesbian issues Saturday morning. Topics covered a broad range of issues from Alternative Conception Issues, to Coming Out, Lesbian Battering, Grassroots organizing, and Signmaking. Signs made during that morning's workshops were quite evident during the rally and parade later that afternoon.

#### Rally & March

The rally, held on the steps of the Capitol, featured politicians and community leaders, who urged the chilled masses to continue pressing for gay rights, in this 'The Gay Rights State'. Representative David Clarenbach (D-Madison), Speaker Pro Tem of the

Assembly, said in his speech, "We gather to plot our future: to move ahead, to set agendas, to accept challenges, to take risks, to win battles — and yes, to lose some as well."

Clarenbach listed legislative accomplishments: the legalization and legitimization of G/L relationships; the defense of principles of sexual privacy; rights guarantees that prohibit discrimination in employment, housing and public accommodations; penalties against gay bashing and other hate crimes; banning discrimination based on AIDS status; the banning of involuntary AIDS testing; and the limiting of AIDS anti-body tests for insurance purposes.

Clarenbach also listed legislative goals: the defense and extension of the Gay Rights bill; domestic partner legislation; halting insurance industry efforts to cut-off health benefits for Persons With AIDS.

Clarenbach also said "We need a Governor who cares..." He chided

contd. on page 7

## MILWAUKEE AREA MAP



### MILWAUKEE (414)...

#### SERVICES

contd. from page 58

- Foundation Community Center  
225 S. 2nd, 53204 ..... 278-0880
- Hurricane Productions (concerts) P.O. Box 200, 53201
- Carol Law & Warren Klaus (attorneys)  
5665 S. 108th, Hales Corners ..... 529-2800
- Floral Flourishes (florists)  
270 E. Highland (Blatz lobby) ..... 271-MUMS
- Manhunt (computer matching)  
501 W. Mitchell, Suite 218, 53204
- Thomas E. Martin (trial & general law)  
161 W. Wisconsin, Suite 3189 ..... 785-9413
- Mr. Vantastic (moving, delivery, storage) ..... 964-9956
- Michael G. Pazdan (counseling) ..... 543-1135
- Print World 1518 W. Wells ..... 342-6800
- Sun City Tanning 915 E. Brady ..... 271-TANN
- Jeanie Simpkins (MS) (counseling) ..... 271-1677
- Vantastic Services (cleaning) ..... 964-9955
- Jim Ritter, Jr. (real estate svcs.) ..... Home: 546-1060  
Office: 332-6608
- Jeanne Wilson (real estate services) ..... (home) 782-0888  
(office) 784-9220

#### BARS

- 9 Angelo's Mint Bar II 819 S. 2nd ..... 645-8330
- 6 Alternative (Mw,D) 1100 S. 1st ..... 647-9950
- 1 Ballgame (Mw,V,D,F) 196 S. 2nd ..... 273-7474
- 3 Boot Camp (M,L,; ) 209 E. National ..... 643-6900
- 4 C'est La Vie (Mw,D) 231 S. 2nd ..... 291-9600
- 4 Club 219 (Mw,DJ) 219 S. 2nd ..... 271-3732
- 9 Dance, Dance, Dance (Mw,DJ)  
801 S. 2nd ..... 383-8330
- 6 Fannie's (Wm,D) 200 E. Washington ..... 643-9633
- 5 Jet's Place (Mw,D) 1753 S. Kinnickinnic ..... 672-5580
- 9 LaCage (Mw,DJ,V) 801 S. 2nd ..... 383-8330
- Loose Ends (GS,Mw,F)  
4322 W. Fond du Lac ..... 442-8469
- 11 M&M Club (Mw,F) 124 N. Water ..... 347-1962
- 8 Melange Cafe (Mw,G S.F.)  
720 Old World 3rd Street ..... 291-9889
- 4 Phoenix (Mw,DJ,V) 235 S. 2nd ..... 278-9727
- 9 Shadovs II (Mw) 814 S. 2nd ..... 645-7500

#### The Station 2-Eastern Connection

- 1534 W. Grant (Wm,D) ..... 383-5755

contd. on page 60

**MADISON (608)**

contd. from page 56

**G/L PHONE INFO**

Gay/Lesbian Phone Line ..... 255-4297  
 Gay & Lesbian Information Recording  
 (ask for tape #113) ..... 263-1100

**MEDICAL**

Madison AIDS Support Network (support & counseling)  
 P.O. Box 781, 53701 ..... 255-1711  
**Blue Bus STD Clinic** (Monday, Thursday)  
 1552 University Avenue ..... 262-7330  
**L/G & Bi's In Medicine** (medical students)  
 1890 Preston White Dr., Reston, Va. 22091. (608) 257-8577

**ORGANIZATIONS**

Gay Alcoholics & Anonymous 1021 University 257-7575  
 Nothing to Hide (gay cable) ..... 241-2500  
**Gay & Lesbian Resource Center**  
 P.O. Box 1722, 53701  
**Madison Gay Men's Choral**  
 2005 Pike Drive #5, 53713 ..... 257-7575  
**Badgerland Narcotics Anonymous**  
 (request gay meetings) ..... (608) 257-1747

**G/L Educational Employees**

c/o MTL, 821 Williamson St., 53707 ..... (608) 255-8582  
**Gay Fathers c/o United**  
 1127 University, Rm. B 103, 53715 ..... (608) 255-8582  
**Galvanize** (G/L pride organizers)  
 P.O. Box 1403, 53701 ..... (608) 255-8061  
**Men Over 30** (support group)  
 P.O. Box 8234, 53708 ..... (608) 244-8675  
**Gay Outdoor** (recreation group)  
 P.O. Box 8234, 53708 ..... (608) 244-8675

**Parents & Friends of Gays & Lesbians**

P.O. Box 1722, 53701 ..... 271-0270  
**10% Society** (student organization)  
 Box 614, Memorial Union, 800 Langdon, 53706 ..... 262-7365  
**United** (education, counseling, advocacy)  
 1127 University, Rm. B 103, 53715 ..... 255-8582

**MILWAUKEE (414)**

**HELP LINES**

Gay Information Svcs. (referrals) ..... 444-7331  
 Gay Peoples Union Hotline ..... 562-7010

**ORGANIZATIONS**

**Alcoholic Anonymous** (request gay mtgs.) ..... 272-3081  
**Beer Town Badgers** (L.L. social club) P.O. Box 166, 53201  
**Black & White Men Together**  
 P.O. Box 12292, 53212 ..... 265-8500  
**Cream City Chorus** c/o 124 N. Water, 53202 ..... 277-0434  
**Cream City Foundation (CCF)**  
 P.O. Box 204, 53201 ..... 278-0880  
**Cream City Business Assn. (CCBA)**  
 P.O. Box 92614, Milwaukee 53202  
**Don't Look Back Productions** P.O. Box 93297, 53202  
**Galano Club** (chemical free recovery club)  
 2408 N. Farwell ..... 276-6936  
**Fest City Singers** (gay choral group)  
 P.O. Box 11428, 53211 ..... 263-SING  
**GAMMA** (sports/social) P.O. Box 1900, 53201  
**Gay People's Union** P.O. Box 208, 53201 ..... 562-7010  
**Gay Youth** (regular peer group meetings)  
 P.O. Box 09441, 53209 ..... 265-8500  
**Holiday Invitational Tournament** (G/L bowling event)  
 c/o 144 N. Water, 53202 ..... 278-8686  
**Lambda Rights Network** (political action, legal defense)  
 P.O. Box 93252, 53203 ..... 445-5552

**Milwaukee Area Gay Fathers (MAGF)**

1407 E. Brady, Box 531, Milwaukee 53202 ..... 871-2362  
**MLGPC Pride Committee**

Metropolitan Milwaukee Friendship Group (MMFG)  
 P.O. Box 93803, Milwaukee 53201

**Milwaukee Area Gay Fathers**

P.O. Box 531, 53202 ..... 871-2362

**Milwaukee Gay/Lesbian Cable Network**

P.O. Box 204, 53201 ..... 278-0880

**Narcotics Anonymous** (request gay mtgs.) ..... 449-9800

**Keep Hope Alive** (HIV+ support)

P.O. Box 32001, Franklin, 53131 (Mon. 6-8 PM) ..... 529-9560

**Oberons** (leather/social group) Box 07423, 53207

**Saturday Softball Beer League (SSBL)**

P.O. Box 92605, 53202

**10% Society at UW-Milwaukee**

Box 251, 2200 E. Kenwood 53201 ..... 229-6555

**Trollops** (women's social group) 1534 W. Grant ..... 383-5755

**Tri-Cable Tonight** (monthly G/L show)

P.O. Box 204, 53201 ..... 278-0880

**Gay Bicycling Network**

2511 N. Farwell, Unit L, 53211 ..... 963-9833

**RELIGIOUS**

**Dignity** (Catholic support group)

P.O. Box 597, 53201 ..... 444-7177

**INTEGRITY** (Anglicans & friends)

P.O. Box 10109, 53210

**Lutherans Concerned**

2511 N. Farwell, Unit L, 53211 ..... 963-9833

**New Hope MCC** P.O. Box 93913, 53202 ..... 442-7300

**Village Church** (Reconciled In Christ)

130 E. Juneau ..... 273-7617

**MEDICAL**

**Brady East STD Clinic (BEST)**

(VD, HIV testing, hepatitis screenings)  
 1240 E. Brady ..... 272-2144

**Milwaukee AIDS Project (MAP)**

315 W. Court St., 53212 ..... 273-2437

**National Coalition Gay STD Services**

P.O. Box 239, 53201 ..... 277-7671

**Women's Alternative Health Clinic**

1240 E. Brady ..... 272-2144

**COMPUTER BULLETIN BBS.**

**Starcom BBS** (user descriptions, files, echo mail)  
 ..... 873-6969

**Lifestyles BBS**

(matchmaking, chat, games) ..... 744-3556

**Alternate Lifestyles BBS**

(gay listings, messages) ..... 933-7572

**Doctor Pervitis BBS**

(24 hr. gay dial your match) ..... 445-0535

**SERVICES**

**Alpha Composition** (typesetting, graphics)

144 N. Water ..... 278-8686

**Arlington House** (advertising)

2120 W. Clybourn, Suite 300 ..... 344-8980

**Art Works** (creative, line, graphic arts) ..... 384-1385

**Beverly Hills Limo Svc.** ..... 358-1900

**CSP, Inc.** (type, stats, photos) ..... 277-9015

**D & D Lingerie** (home party plans) ..... 649-9545

**Financial Planning Svc.** 322 E. Michigan ..... 445-5552

contd. on page 59



A large crowd turned out for the Names Quilt Project opening ceremony at the U.W. Fieldhouse.

contd. from page 6

Governor Tommy Thompson and state government for spending \$22 billion in each budget, and for the third year in a row, not recommending "one thin dime of state funding for direct support services for people with AIDS, and for that I am ashamed." (Editors Note: See elsewhere in Briefs for a news article relating to this topic.)

Openly Gay and Lesbian elected officials from the Madison Council, Board of Trustees Village of Shorewood Hills, and the Dade County Board of Supervisors were introduced to the crowd by rally emcees Meg Gaines and Tony Sheehan, who did an excellent job of pulling it all together. A moving speech by Tammy Baldwin, a member of the Dane County Board urged those assembled to 'show' themselves in order to effect a change in attitudes, and told the crowd that "speaking out equals pride."

Besides Clarenbach and Baldwin, speakers included Karen Thompson, alderperson Ricardo Gonzales and lesbian

feminist activist and police officer Cheri Maples.

The rally went nearly an hour over schedule, but within 15 minutes of the last speech, it stepped off in high spirits. This was no quiet mob of people. After proceeding part way around the capitol to Carroll Street, then onto West Washington to Henry, the full line up was not seen on one stretch until State Street. Once on State Street, marchers filled approximately 7 blocks, from curb to curb. Shoppers along the trendy State Street were assailed with chants, slogans, signs and balloons. There were some curious stares, but no problems were reported by the Madison police, who hailed the rally and march as one of the most organized they had seen.

As the March turned the corner onto Langdon Street, home of many of the University of Wisconsin's fraternities, participants were greeted by a huge supportive banner hung from the upper floor of the first home on the street. Few

contd. on page 8

contd. from page 7

verbal taunts were voiced, although many of the frat houses were filled with students, many of them partying.

Marchers reached the rally site, on the shores of Lake Mendota, and many of them scattered to warmer surroundings. Those who stayed were treated to celebration complete with entertainment by live bands and choral groups. One of the most popular features were the porta potties.

Overall, it was a tremendous weekend, bred of excellent organization and lots of plain hard work on the part of GALVANize and its volunteers. Congratulations on a job well done, and a hearty thanks to all of the participants who braved the cold temperatures to voice their pride. Will there be another next year? The decision is yet to be made.



Representative David Clarenbach, the "father" of Wisconsin's "Gay Rights Law."

## MASN / MAP Funding to be Voted

Direct state funding for AIDS/HIV life care services would be initiated if a budget amendment is approved by the legislature in June.

State Representative David Clarenbach (D- Madison) has proposed appropriating nearly \$1 million to Wisconsin's five AIDS Service Organizations (ASO's) including Madison AIDS Support Network (MASN) and the Milwaukee AIDS Project (MAP).

"The funds would support additional case managers required for projected increases in living AIDS cases and HIV + infections in Wisconsin," Clarenbach said.

"These cost-effective services are intended to meet the needs of ASO lients in the home while reducing the need for institutionalized care," Clarenbach added.

"This appropriation will begin to overcome the total absence of state funding to assist people with AIDS," he said.

Lawmakers will vote on this amendment by the end of June during deliberations on the state budget. Citizens are urged to contact their State Representative and Senator immediately to voice their opinion on this amendment.

To obtain the name of your legislators, call the Legislative Hotline at 1-800-362-9696. Letters to lawmakers can be sent c/o State Capitol, Madison, WI 53702.

## Senate Bumps Up AIDS Funding, House Holds Line

by Cliff O'Neill

Washington- The Senate and House on May 4 approved similar \$1.17 trillion budget plans broadly outlining funding for fiscal year 1990 for the federal government, including funding for the nation's fight against AIDS

As part of the Senate's plan, the body also approved by voice vote an  
contd. on page 9

# "Dial Direct On 6400" Local and Nationwide

GAY OWNED/OPERATED



Try our  
**FREE LINE**  
(312) 263-6400  
Message Units Apply

\*.95 1st min.

LOCAL

# 1-900-999-6400

\*Only 65¢/min.

NATIONWIDE

# 1-900-USA-6400

( 8 7 2 )

\*Only 75¢/min.



# T H E g u i d e



—CODE CHART—

- MW ..... 1/2 Men, 1/2 Women
- M ..... Prefer Men Only
- Mw ..... Mostly Men, Women Welcome
- W ..... Prefer Women Only
- Wm ..... Mostly Women, Men Welcome

## FOX VALLEY (414)

- Brandy's II** (MW, L/L)  
1126 Main St., Green Bay ..... 432-3917
- Club 125** (MW, V, DJ)  
125 S. Washington, Green Bay ..... 437-9663
- Grand West** (MW) 1444 Main St., Green Bay . . . 433-9601
- Jay's Nautical Inn** (G,S,F) Hwy. 54, New London
- MJR's Loft** (MW,DJ) 2328 University, Green Bay 468-9968
- Napalese Lounge** (MW,DJ) 515 S. Broadway  
Green Bay ..... 432-9646
- The Pivot Club** (MW,DJ) 4815 W. Prospect  
Appleton ..... 730-0440
- Sherlock's Home** (G,S,Mw,F) 733 Pennsylvania  
Sheboygan ..... 437-7400
- Who's** (MW,DJ,V) 720 Bodart (rear), Green Bay 435-5476

## ORGANIZATIONS

- Angel of Hope** (MCC Church)  
P.O. Box 672, Green Bay 54305 ..... 437-3816
- Argonauts of Wisconsin** (L,L Social Club)  
P.O. Box 1285, Green Bay 54305

- G/S ..... Gay/Straight Mixed
- L/L ..... Levi/Leather
- D ..... Dancing
- DJ ..... Disk Jockey, Dancing
- V ..... Video
- F ..... Food Service

- Dignity** (Gay Catholic Group)  
P.O. Box 2283, Green Bay 54306
- Gay Alcoholics Anonymous** (Meeting Weekly) 494-9904
- Parents & Friends of G/L** (PFLAG-Lakeshore)  
Box 1396, Sheboygan 53081

## MEDICAL

- Center Project** (HIV Testing, Counseling)  
P.O. Box 1062, Green Bay 54305 ..... 437-7400

## MADISON (608)

### BARS

- 2 Back East** (MW,DJ)  
508 E. Wilson St. (rear) ..... 256-7104
- 1 Rod's** (Mw,L,L,D) 636 W. Washington (rear) . . . 255-0609
- 1 The New Bar** (MW,DJ,V)  
636 W. Washington (upstairs) ..... 256-8765
- 3 Shamrock Bar** (GS,MW,F,D) 117 W. Main ..... 255-5029

### RELIGIOUS

- Integrity/Dignity** Box 730, 53701 ..... 836-8886

contd. on page 58



contd. from page 8

amendment sponsored by Sen. Edward Kennedy (D-Mass.) to up AIDS funding by \$100 million. A House amendment to up AIDS funding by \$300 million, proposed by Rep. Richard Durbin (D-Springfield, Ill.), was defeated in subcommittee before the federal budget was voted on in that body.

Although it had been suspected that Sen. Jesse Helms (R-N.C.) would attempt to place reactionary AIDS amendments to the budget, the arch conservative took no such action during the Senate proceedings.

The complicated House and Senate AIDS funding proposals both different from the \$1.6 billion AIDS budget proposed by President George Bush earlier this year. Had it passed, the failed \$300 million House proposal would have boosted AIDS spending to \$1.9 billion, although it would include a \$100 million funding increase to the Veterans' Administration, not included under an AIDS by-line in the \$1.6 billion Bush proposal.

In the Bush budget, AIDS funding is increased by \$300 million over 1989 levels. In the amended Senate proposal, however, funding for "discretionary health programs," which includes all AIDS programs, is boosted by \$300 million over last year's levels, leaving specific AIDS spending at lower levels.

"AIDS is certainly one of a handful of things that fall under that heading," stated Steve Smith, lobbyist for the Human Rights Campaign Fund, noting that to equal the increase proposed by the Bush budget, all discretionary health programs would have to be AIDS-related, leaving out a host of other health issues.

The \$100 million Kennedy amendment boosting the AIDS budget diverts funds from federal health department travel budgets and makes them available for expanded AIDS care programs, including grant programs to the states to fund community-based demonstration projects and sub-acute care AIDS housing. The amendment also includes funds for AIDS mental health counseling demonstration projects and authorizes the development of a county-based network for care for

contd. on page 10



Despite the unseasonably cold temperatures, thousands braved the elements to stick around for the Celebration after the Parade/Rally.

**A.B.**

**THE NEW BAR**  
HOTEL WASHINGTON COMPLEX  
636 W. Washington . Madison

**BUCK ME...  
AT THE NEW BAR**

**Buck Night Every Sunday  
8 PM - Close**

**All Rail, Domestic Beer & Wine  
JUST \$1.00**

**SPECIAL HOLIDAY WEEKEND  
BUCK DROP  
Over The Balcony at Midnite  
OVER \$1,200 IN CASH  
& PRIZES**

**MEMORIAL WEEKEND  
BASH  
Monday, May 29**  
After a day at the Park  
It's 'TIME' For a Party  
**IT'S MILLER TIME!**  
Any Miller, Miller Lite,  
Miller Draft \$1.25  
All Nite Long

contd. from page 9  
people with AIDS

"AIDS is certainly a place where the demands are rapidly increasing," said Smith. "But AIDS funding has gotten one of the largest increases in the budget."

With the House approving its budget without the Durbin amendment, AIDS activists will now be lobbying a conference committee tapped to resolve differences between the House and Senate budgets to see that they retain the Kennedy AIDS funding amendment.

After the joint conference committee resolves those differences, appropriations bills will be drawn up for House and Senate approval.

### City Appointments Available

Milwaukee- Continuing to make all City of Milwaukee Boards, Commissions and Committees available to ALL citizens, including Lesbians, Gay men and Bisexuals, the Office of Mayor Norquist is working with Lambda Rights Network (LRN).

According to LRN Chair Ralph F. Navarro, nine positions are currently available. They include the following: Zoning Board of Appeals, City Service Commission, Election Commission, Fire & Police Commission, Historic Preservation (LRN Board Member J. Robert Moore is currently a Norquist appointment to this Commission), Parking Commission, Redevelopment Authority, Safety Commission and the Milwaukee Metropolitan Sewerage District.

For information on how to appropriately apply for consideration to any of these appointments, contact LRN at 445-5552 as soon as possible.



D.J. Penny at Back East kept the dance floor busy.

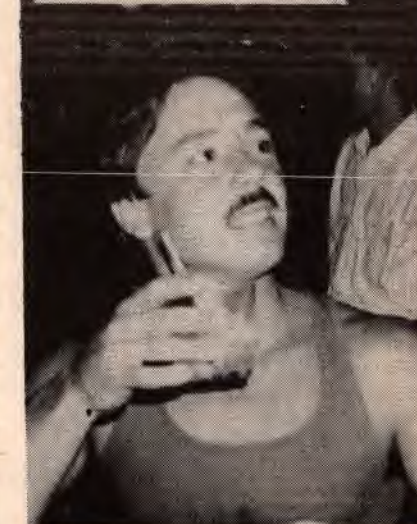
### Magazine Discusses Homophobia

In what amounts to a major step, Wisconsin-based **Single Life** magazine has researched a story in its May/June issue, currently on newsstands. **Single Life** reports on single life activities for heterosexuals only.

Editor Leifa Butrick researched and wrote the three page article which included significant material from Lambda Rights Network's Ralph F. Navarro, TRI-CABLE Tonight host Juana Sabatino and former Brady East STD Clinic Director, Dr. Roger Gremminger.

Navarro noted that "while no new ground was broken, the very fact that **Single Life** even discussed this issue openly and honestly is a great beginning to educate the larger population" which is one of the goals of Lambda Rights Network.

Interestingly enough, pointed out Sabatino, the cover story for this issue was "the rugged sport of Rugby."



Some friendly faces at The Napalese Lounge.



## It's Hard

to find compatible men if you don't know where to begin.

We start with:

- A detailed questionnaire
- Very low fees (How's \$20?)
- Guaranteed satisfaction
- A fast, efficient system

Call today for a free brochure.

# ComQuest™

Computerized Matching Service

1-800-633-6969

(Toll free, 24 hours)

## MANHUNT™



## WANTED!

A man .... for a serious relationship. ...  
 If you've been looking for the 'right' man ....  
 bars, supermarkets, and phone lines are  
 not the place to find him.  
 Thousands of busy, professional gay men  
 have found a better answer .... computer  
 matching will provide you with detailed  
 descriptions and personal handwritten  
 comments .... in private, at your leisure.

Easy • Inexpensive • Confidential

Send for our FREE information package!  
**MANHUNT**, Suite 218, 501 W. Mitchell St., Milwaukee, WI 53204

contd. from page 53

**Can You Say 'Monogamy'?** GWM 20, 6'1", 190, bl/hzl. Student. Looking for friend or relationship. I'm secure, supportive, fun, and open to new ideas. I hate B.S. and barfllys. I'm looking for someone stable, sincere, healthy and bright 28-40 who enjoys music, movies, outdoors and spending time together. No fats, fems, drugs. P.O. Box 5112, Elm Grove, WI 53122. Photo appreciated. ▽

## graffiti

**Bob S. [Jet's]:** Hope you liked your slut on Tues. Night. **Your Secret Admirer**

**Goldie:** Thanks for hosting our Tues. nite shows & Lip Sync. It's been a slice!  
**Alternative**

**Wadums:** I'm glad I changed the way you feel about mornings.  
**Henry**

**David [Racine]:** I can't stop thinking about you. And I can't get a hold of you. Give me a call.  
**Steve**

**Bob S. [Jet's]:** The Counseling Center for Milw. is not supposed to be in your bedroom...  
 ????

**Jerry & Buddies:** A warm Milwaukee welcome to all our friends from the Big Apple. Happy to have you back.  
**Sis & The Spurs.**

**David:** Here's to the future! **Luv, Michael**

**Ms. Richards:** Is it true that your friends know you as 'scary' Mary Richards?  
**One of your Admirers.**

**Linda:** Friday night was the best! I hope we can get together soon. That is if you stay home to answer your phone, instead of your damn answering machine! ???

**Best Birthday ever:** Thanks to Jet's People. Especially J,B,K,B,B, Etc. **Dick**

**Shy Person:** Horny as hell. Lost husband through windshield, 6 mo's trying to forget. Loved him dearly. **Who's on 1st.** ▽



Top — A view of the Rally for Lesbian and Gay Rights and Pride at the Capital looking towards the speaker's podium. Bottom two photos show the vast crowd assembled from the speaker's point of view.

# g r o u p n o t e s

## Gay/Lesbian Pride Week Update

The Milwaukee Lesbian/Gay Pride Committee [ML/GPC], in the midst of final preparations for the 1989 Milwaukee Pride Week and Parade/Rally has announced several more fundraisers and is asking any one else interested in participating in the parade or rally program, organizational networking, vending, etc., to contact them as soon as possible.

Over 100 volunteers are being sought by the committee to assist with the June 17th Parade and Rally as 'Pride Guides' to marshal the Parade and Rally and assist with other duties. Float vehicles and drivers are also needed for organizations interested in a Parade entry. Those interested in volunteering, in offering ideas, suggestions and assistance are asked to contact the committee at (414) 32-PRIDE.

Several more fundraisers have been announced since the last issue of In Step, and they include the following:

• **Friday, May 26 - Champagne/Buffer Reception**, at the Foundation Community Center (225 S. 2nd St.), 7:30p.m., free for ticket holders of Edelweiss Moonlight Cruise which follows at 10p.m.

• **Tuesday, May 30 - '219 Girls Show'** at Club 219, 11:30p.m., a special show to benefit ML/GPC.

• **Wednesday, May 31 - Proud Crowd Ad Deadline for In Step**, June 8th Issue. \$5 donation to ML/GPC gets your name listed on Proud Crowd Ad. Call 32-PRIDE for more info.

• **Friday, June 2 - ML/GPC Beer Bust** at Jet's Place, 9 p.m.-1 a.m.

• **Monday, June 5 - Fundraiser for ML/GPC at This Is It**, 10-12p.m.

• **Friday, June 9 - Parade of Stars Show**, at Jet's Place, a blockbuster special benefit show for ML/GPC, 10:30p.m. showtime.

• **Saturday, June 10 - Pride Ride and Benefit**, Bicycle Pride Ride leaves War Memorial at noon, and then the Ballgame

hosts a Pride Ride Benefit from 4-8p.m.

All the fundraisers listed in the last issue, as well as the ones above also appear in the Calendar section of In Step.

ML/GPC Celebration '89 includes a weeks worth of activities, including Milwaukee's First Annual Gay/Lesbian Pride Parade and Rally on Saturday, June 17th. The national pride week theme is "Stonewall 20: A Generation of Pride". Enthusiastic support and involvement is pouring in from organizations, groups, and individuals from Milwaukee, the state and the Midwest. The response seems to insure Milwaukee's Pride Week activities will make this year's event a truly memorable celebration of our right to be proud of who we are, and a visible support for equal rights of all persons.

So far Pride Week events have been confirmed for Friday, June 16 & 17, when Milwaukee's original Fest City Singers will present "Catch a Rising Star" at the Milwaukee Repertory Theatre's Steimke Theatre; June 17th, which will host the Parade/Rally, a sign-making workshop and a pre-Parade cook-out; and the Second Annual Interfaith Service on Sunday, June 18th.

Contact ML/GPC by calling 32-PRIDE, or writing them at 225 S. 2nd St., Milwaukee, WI 53204.

Full details will appear in the next two issues of In Step, regarding Pride Week activities and associated information. Be sure to pick one up, hot off the press, on June 8th and 22nd.

## BWMT Can-Can

Black and White Men Together of Milwaukee wants your old aluminum cans. The can drive is a fundraising activity for the group. BWMT officers will be happy to pick-up your unwanted cans. Just give them a call:444-4779.

contd. from page 52

**Meet The Right Man** If you're tired of bars & phone lines...Thousands of gay men have found a better answer...Computer matching. For Free information Write to: MANHUNT, Suite 218, 501 W. Mitchell St., Milw., WI 53204

**Sizzling California Phone Sex!** We're twenty of L.A.'s hottest models, centerfolds, and most versatile men. Totally built! Totally tan! Totally hung! Call us 24 hrs/day (We're always horny!) 1-800-548-7827 "L.A.'s Shooting Stars", Mastercard/ VISA/Amer. Express. Low Rates.

**Want A Larger Penis?** Enlargement is possible. I gained 1" in 4 months. You can too! Read how in "Gary Griffin's Confidential Report on Penis Enlargement Methods," the 100-page underground best-seller. Discover how Sudanese Arabs 'grow' 10" penises (p.56) the shocking Tibetan Monk cock enlargement ritual (p.54), the world's largest penis (p.26), newly-developed surgical enlargement procedures (Ch3), & the only medically-proven method of enlargement (86 percent success rate). See Ch 4 for intimate details of 42 horsehung celebrities. Full of pictures of donkey-dicked men. If you're serious about enlargement, this book's for you. \$13 to "Added Dimensions", 4216 Beverly Blvd. Suite 118, LA, CA 90004. 7-day money-back guarantee. Clip this ad with order for free photo of Mr. 13".(WISC.).

**GWM, 30's**, needs young GWM 18-28 for auto trip to West coast, two weeks late June. Send note with photo to Boxholder, Box 134, Waukesha, WI 53187.

**Down and Out** Need a place to live. GWM looking for someone to share life with. I am into outdoor sports, quiet times, rock music, light drugs ok. Call or write Bob 1-715-524-3817 or write: Rt. 4 Box 419C, Shawano WI 54166.

**GWM, 25, 155#, 5'11"** lonely. Looking for long term relationship/friendship with GWM 20-30. I'm a light drinker and non-smoker, new to the Milwaukee area. In addition I'm lovable, friendly, and romantic for that special person. Call Tim at 962-2689 anytime, serious calls only. No fats, fems, or blacks.

**Steve P** It was one hell of a nice date. Lots of laughing, drinking, jazzing. Looking forward to good times again soon. By the way; while cocktailing, someone made a statement in regards...Seems there's 'Loose Ends' to be tied! Call!! Dale W.

**Attractive GWM, 49** would like to meet younger men for companionship, sex, and cultural interests. Possible relationship. Educated, professional, horny. P.O. Box 83173, Milw. WI 53223.

**Professional GWM 27.** Seeks honest discreet friend to enjoy summer with. I enjoy sports, travel, concerts and quiet evenings. Not much into bars. No fats, fems or drugs. Married OK. Photo a must and discretion assured. Boxholder, P.O. Box 37381, Milw., WI. 53237-0381.

**GWM, 40's 5'10"**, 170lbs. Straight acting, stable, educated and sensitive, open to many interests. Seeking someone interesting, fun, sincere, and romantic that needs someone. Prefer ages 20-29, slim, no fats, fems or smokers please. P.O. Box 44166 West Allis, WI 53214.

**GWM** Would like to meet same 35-50. Likes office and police type. I am clean, personable. I'm told good looking, 5'9" 150lbs. Send letter, number, photo: James Aretam (upper), 2046 Carlisle Ave. Racine, WI 53404.

**Beat your Drum:** Join the Great Lakes Freedom Band & participate in the 1st Milw. G/L Pride Parade. Percussionists needed, call 32 PRIDE, now, please.

**GWM in Beloit** Seeks lasting relationship (30-50). 5'8", 130lbs. Enjoy time alone together, dining out, doing things together. No fems, drugs. Please call 608-362-8626.

**GWM 19, 5'11, 165lbs.** Is Seeking Mr. Right. If you are a GWM, 19-30, tall, talkative, a romanticist and an all around fun guy, you could be Mr. Right! Write to P.O. Box 393, Slinger, WI. 53086.

**GWM 27, Seeks Latino Man!** Me: 5'9", 160 lbs. Bl/Gr, HIV-, Hung & Versatile. You: Under 6', HIV-, Husky & Hung Thick. For fun times, poss. relationship, send interests w/photo & SASE to, Boxholder, P.O. Box 15963, Milw, WI 53215. All Answered!

contd. on page 54

### SERVICES

**Housepainting**, reasonable, reliable and references. Call for a free estimate. Leona 344-4918.

**Experienced Resident Manager Couple** Seeks full-time employment. One has outside employment. Salary negotiable. Also available for carpet cleaning, painting, showing units, etc. Call (414) 383-0997 between 8a.m.- 6p.m.

### BUY/SELL

**Rummage:** 3 Households, Sat. & Sun. June 3 & 4, 10a.m.-5p.m. Antiques, collectibles, art deco, jewelry, etc. All good quality items. 3119 W. Wells St. (backyard). Rain or shine.

### COUNSELING

#### COUNSELING SERVICES

**MICHAEL G. PAZDAN**

Psychotherapist

414.543.1135

Individual Therapy, Relationships,  
Sexual Adjustment, HIV+,  
Substance Abuse, Adult Child Issues

#### COUNSELING FOR:

- Relationships
- Sexual Identity Issues
- Individual Therapy

**JEANIE E. SIMPKINS, M.S.**

281-1677

### PETS

**Birds, Birds, Birds** Tame baby birds 8 weeks old - Cockatiels, Quaker Parrots, and Fancy Parakeets. All raised in our own Aviary - Hand fed, super Lovable pets, priced far below other pet shops! Of course we have Fresh & Salt water Fish...110 fish tanks on display, backed with 250 tanks in our hatchery. (Tours: Sunday only). Feed & Supplies, too! All at Seven Seas Aquatics, 215 W. Florida (1 block South of Cest La Vie!) Phone 272-7966. Hours 12 to 8 Mon-Sat, 12-6 Sunday.

### ORGANIZATIONS

**Bicycling Network** Tent-mate needed for SAAGBRAW, South from La Crosse to Milwaukee, August 6 - August 12. Call Bob at 414-963- 9833.

**Gay Wrestling!!!** For real, for fantasy, for fun. 500+ healthy, hot men. All sizes, all scenes, all areas (Milwaukee/ Midwest/ Nationwide). Uncensored infopixpak \$3.00: NYWC, 59 West 10th, NYC 10011.

### PEOPLE

**GWF-5'1, 115lbs.** Looking for honest, intelligent, loving woman 30-40 for friendship or relationship. If you enjoy dining out movies, the outdoors, quiet evenings at home, and are just as tired of the bars as I am. Lets get to know each other. Please write. P.O. Box 21873, Milwaukee 53221, No drugs.

**Lovely and trim submissive**, yet hard-to-handle lesbian, seeks female Mistress for my discipline and training. Have you got what it takes to make me shake? Only true Dom.'s need apply. Send inquiries and qualifications to: 1407 E. Brady St. #528 Milw. WI. 53202.

**GWF 26**, Looking for lasting relationship. If you enjoy camping, scuba-diving, fishing, skiing, 4-wheeling, amusement parks, travel, romantic weekends. Someone who enjoys spending time together. Please write: Occupant, P.O. Box 14213, West Allis, WI 53214.

**GWM, Looking for Mr. Right** to come and live in Country lake home. Would love to spoil GWM 18-25. I am straight acting and love sports and out of doors. Write to: J.W.H. 7859 Boom Bay Hts Rd., Larsen, WI 54947.

**GWM Yuppie 24, 6'1", 160#** Professional. 2 years out of college. Good looking, straight acting/ appearing, stable. Not into bars. Enjoys biking, swimming, tennis, sports, art, culture. Would like to meet similar educated, young professionals ages 22-32. Please, no fats/fems/drugs. Write to: P.O. Box 23958, Suite 164, Milw., WI 53223-0958.

contd. on page 53



Marchers and units during the May 6th March on Madison for Lesbian and Gay Rights and Pride.

## Community Speak Out

Lambda Rights Network has announced, with other organizations like N.O.W., A.C.L.U., and others, a Community Speak Out with some of the most significant and powerful individuals in the Milwaukee area.

Celebrating with the Gay Pride Committee, the Community Speak Out will host the following people discussing the who's, where's and what's in greater Milwaukee: Howard Fuller, Ricardo Diaz, Helen Barnhill and David Beagel.

The Foundation Community Center will be the site of the June 19, 1989 event which will begin at 7:30 p.m. as part of Milwaukee Pride Activities. Tickets will be \$3.00 before the event and \$5.00 at the door. Reservations may be obtained by calling 445-5552.

## Candlelight AIDS Vigil

The Milwaukee AIDS Project, in association with Mobilization Against AIDS, will participate in an international service to honor those who have died of AIDS, to support the living and affirm again the commitment to work toward eradicating this disease and the pain and suffering it brings.

As described in the last issue of In Step (Briefs section), the candlelight vigil in Milwaukee will be one of over 170 services in cities across the country. All services will be held on Sunday, May 28th, and Milwaukee's will be held at 7:30p.m. sharp, at St. Paul's Episcopal Church, 914 E Knapp Street. The service will be interdenominational.

Milwaukee has responded enthusiastically in past years. This year, more members of our community and state have been touched by this terrible disease. The incidence of AIDS invites us all to remember, to heal and to support. MAP hopes to see you there in love and support.

## Entertainers Against AIDS

Sunday, June 11, Fannie's, located at 200 E. Washington will hold an outdoor show beginning at 4:30 p.m. The show, entitled "Entertainers Against AIDS" will feature performers from Club 219 and Holly Brown & Co. from La Cage plus lots of special & surprise guests. All proceeds will be donated to the Milwaukee AIDS Project for direct patient support.

Tickets are \$5 in advance \$6 at the door. Tables can be reserved for \$5 and \$10. Tickets can be purchased at Fannies, LaCage, M & M, and C'est La Vie.

### IF IT CONCERNS YOU, IT CONCERNS US! ATTORNEYS

Carol L. Law  
& Warren J. Klaus  
**LAW & KLAUS**

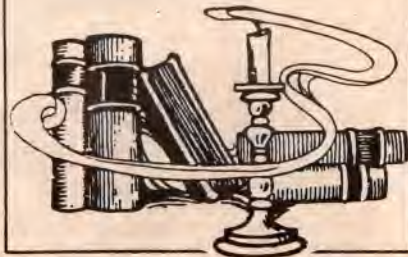
5065 South 108th Street  
Hales Corners, WI 53140  
529-2800

Wills, Probate Avoidance, Partners  
Separation Agreements, OAWI,  
Real Estate, Visitation & Family  
Law, Personal Injury &  
Workers' Compensation

### FREE FIRST MEETING

with attorney regarding any legal  
matter. Call for an appointment.  
Evening and weekend hours.

CPA SERVICES



# classies

## ROOMIES

**Want More Than Just a Room?** Share our lovely home. Furnished bedroom with waterbed. All utilities included. Bayshore area. Deposit (1/2) mo. Prefer non-smoker. \$245.00 month. Available Now. Please call 964-9955 (Tim or Ken).

**Wanted:** Roommate to share 2 bedroom in Juneau Village area with 27 yr. old GWM. Sunny, airy, lakeview, balcony overlooking Downtown. Microwave, dishwasher, heat included. \$267.50 plus utilities. Call 271-1088 or leave message.

**Lesbian Roommate** to share lovely 3 bedroom home with two women, park-like setting, NE side, non-smoker, no chemical dependency, \$250 incl. heat, we have two dogs & cat, call 351-4656.

**Roommate Wanted Immediate;** \$162.50, 1/2 utilities, Southside location 2 bdrm. Looking for a long term roommate who is financially responsible. Call Eves; 643-8868.

**Male to Share House** with two other males on Northwest side. \$225.00 per month. 1/3 utilities. Own transportation required. 355-1776. Ask for Ralph, days only.

**Roommate Wanted:** Looking for responsible employed GWM to share spacious home five minutes from downtown. Utilities and laundry facilities included. Furnished or unfurnished. \$185.00 Call 476-7464.

**Large East Side Condo.** Private bedroom and bath; share updated kitchen; new laundry; spacious, fully-furnished living, dining, and sitting rooms. Financially responsible gay male. \$350/mth includes heat. Call Bob at 963-9833.

**Responsible, employed GWM** to share spacious home 5 minutes from downtown. \$185/mo includes: utilities & laundry facilities. References required. Call 476-7464.

**Room to Rent** to GWM in Beloit. Kitchen & Television privileges. Downtown location - 2 bedroom apt. 608-362-8626.

**Room with separate half bath** in large private residence, near area 68th & Wisconsin Ave. Furnished or unfurnished, parking. Quiet environment for student. Rent negotiable, need general help. 778-1423 please leave message, or write: P.O. Box 983, Milw., WI. 53201

**GWM, 35, Madison Law Student** starting this fall. Looking for neat, quiet, responsible, non-smoking male or female to share 2-bedroom apartment beginning Aug. 15 or Sept. 1. Call Steve, 414/342-8289.

## HOUSING

**Bay View:** Lower flat, clean, bright 2 bedroom, dining room, appliances, washer, dryer, cable ready, carpet. Nice yard near lake. Available July 1, \$450, 481-1711.

**2 bedroom upper,** includes utilities and appliances. Carpeted, street parking. \$450.00 plus deposit, West Allis area. 258-6796.

## REAL ESTATE

**Artistic Retreat:** Secluded year-round cottage on Pickerel Lake, Forest County. 108' Frontage. What a view! Only \$45,000. Future Real Estate 715-674-2615.

**For Sale: Lovely 2 Bedroom Home** West Side, central air, 2 fire places, new kitchen, rec. room basement or 3rd bedroom. 871-2362 Mike or Steve \$ 47,900.

## EMPLOYMENT

**Now accepting applications** for Waiter/Waitresses. M&M Club, apply in person. 124 N. Water.

**Housekeeper, gardener, chauffeur,** personal attendant position desired. I am Caucasian male, 33, M.A.T.C. student and have several years experience in several diversified fields. Write: John, P.O. Box 71216, Milwaukee, WI 53211.

cont'd. on page 52



The Mint 2 recently celebrated its 40th Anniversary. Betty, Rosie, and their staff and friends partied the afternoon away.

## Milwaukee AIDS Activism

Until recently, Milwaukee hasn't seen any AIDS activism, in the style of ACT-UP and other similar groups from across the country. But if Daniel Trzebiatowski has his way, that's going to change, and soon.

Daniel is seeking persons affected by AIDS to join him in two separate actions. The first will be a vigil in front of the new Federal Building in downtown Milwaukee, and the second marching as a group in Milwaukee's first Gay/Lesbian Pride Parade.

The Federal Building vigil, set for 9p.m. May 28th, in front of the 'big blue'

Federal Building at 3rd and Wisconsin Avenue will occur immediately following the AIDS Candlelight Vigil Memorial Service, co-sponsored by the Milwaukee AIDS Project and Mobilization Against AIDS. Daniel is seeking a group of concerned friends, and all affected by AIDS to gather for a short speech and a vigil to make a statement about the lack of response to AIDS by the Federal Government.

In the second action Daniel is trying to organize, he "wants to make a statement in the fight against AIDS" and is looking for AIDS affected people to march as a group in the Pride Parade. His banner theme will be "With hopes of reaching

*contd. on page 16*

## Milwaukee AIDS Project

Fighting AIDS through effective service:

### Education and Prevention

- AIDS line—the latest information on AIDS
- Library/Resource Center—Wisconsin's comprehensive source for articles, pamphlets, books and videos on AIDS
- AIDS prevention education for people engaging in risk behavior

### Life Care Services

- Home care support
- Support groups
- Counseling
- Case management
- Medical, psychological and spiritual referrals
- Financial assistance
- Housing assistance

If you have questions, concerns, or need assistance, call:

Statewide: **1-800-334-AIDS**

Milwaukee: **273-AIDS**

**The Milwaukee AIDS Project**

**We support learning.**

**We promote living.**



contd. from page 15

You...Not through our deaths but our lives!"; People AFFECTED by AIDS.

All those interested are asked to contact Dan by calling 672-7400 in Milwaukee.

## Tri-Cable Named Finalist in Video Competition

TRI-CABLE Tonight, produced by Bryce Clark and Mark Behar of the Milwaukee Gay/Lesbian Cable Network, has been named a finalist in the 1989 Hometown U.S.A. Video Festival. Now in its 20th month of production, TRI-CABLE highlights Milwaukee's Gay & Lesbian community in a magazine-style television program.

Hometown U.S.A. recognizes outstanding local programs that are produced by or for local organization departments of cable systems and by public, educational and governmental access facilities. There are over thirty separate categories in the competition and awards are given in both single and series program categories. The 1989 Hometown Video Festival received over 1750 entries from 285 cities in 38 states, making Hometown the largest and most diverse cable programming competition in the nation.

Hometown Festival judging takes place in a two-step process. Preliminary judging is hosted by 17 selected sites across the United States. Final judging is hosted by the Tucson Community Cable Corporation. Winners will be announced and receive their awards on July 13 at the

National Federation of Local Cable Programmers Annual National Convention in Dallas, Texas.

TRI-CABLE can be viewed on City of Milwaukee Warner Cable Channel 14 (MATA, public access) on the first and third Tuesdays of every month at 7 p.m., and the last Sunday of every month at 6 p.m. The program is replayed the mornings or afternoons following the above dates. Beginning in September, cablecasts of TRI-CABLE will increase to two, regularly scheduled dates a week.

For more information contact: Mark Behar, 277-7671 (h), 271-1558 (w) or Bryce Clark, 271-7812 (h), 272-0524 (w).

## "Two in Twenty"

The Women's Crew Cuts, a video production cooperation at Milwaukee Area Telecommunications Authority (MATA) public access channel 14, along with the 10% Society at UWM with support from the Cream City Foundation are sponsoring a screening in two parts of "Two in Twenty" a lesbian soap opera which originally premiered in Boston in January of 1988.

Since then "Two in Twenty" has been screened in major U.S. and Canadian cities as well as London. After decades of invisibility, lesbian drama with all its romance, complexity, and humor has been captured on video. Written and directed by women "Two in Twenty" is an example of how lesbians can organize in a community to create original entertainment.

"Two in Twenty" will be shown in two parts, Friday, May 26, and Friday, June 2, contd. on page 18

### BAR HOURS:

11 Till Closing Daily

### DINING ROOM:

11:30 - 2:30 Lunch

5 - 11 Dinner

11 - 4 Sunday Brunch



124 N. Water Street

Milwaukee, Wisconsin (414) 347-1962

contd. from page 48

of rooms at Seattle's Tropics Motor Inn has been reserved for Sports Festival athletes.

To receive entry forms, or for more information about the Sports Festival, contact Team Seattle at 1206 E. Pike Street, Seattle, WA 98122, or call (206) 322-2777.

## Gay Bicycling

Milwaukee's Gay Bicycling Network has announced plans for two rides on Memorial Day Weekend.

Saturday, May 27th the group will pedal from the Lake Park Pavilion at Noon, through the 'bar district' to Grant Park. Monday, May 29th, the Network, in

conjunction with Village Church, will leave the Church, proceed across the county following the '76 E-W bike trail to Greenfield Park. Following a picnic, they'll continue south to Whitnall Park.

For more information and to 'sign-on' any of the above trips, contact Bob at 963-9833.

**BERLIN**  
The neighborhood bar  
of the future.  
954 W Belmont  
Chicago, IL 60657  
312 348-4975

**Touché**  
Chicago

beer 'n' booze  
'n' beautiful  
people

**Little Jim's**  
CHICAGO'S LATE NIGHT  
SPOT TILL 4 AM  
3501 North Halsted  
Chicago, Illinois  
(312) 871-6116

The North End  
of Chicago's  
'Halsted Strip'

**THE NORTH END**

(312) 477-7999  
3733 N. Halsted, Chicago

**BULLDOG ROAD**  
& VIDEO BARN

2914 N. Broadway, Chicago  
(312) 525-6550

LIFE IS A  
by DRAG  
ROBERT D. ARNOLD

'At the health spa  
she always gets a  
faceful of mud and  
an earful of dirt....'



# jock shorts

## SSBL Softball Schedule

**June 3 Upper Diamond**  
 11am Bad Girls vs. Alternative  
 Noon Bad Girls vs. M&M  
 1pm This Is It vs. Ballgame  
 2pm La Cage vs. Ballgame  
 3pm Wreck Room vs. Jet's Place  
 4pm Jet's Place vs. CCF

**Lower Diamond**  
 11am Fannies vs. M&M  
 Noon Alternative vs. Fannies  
 1pm Your Place vs. La Cage  
 2pm Your Place vs. This Is It  
 3pm Station II vs. Triangle  
 4pm Wreck Room vs. Triangle

## Standings as of May 13

<b>Woman's Division</b>	W/L
M&M Bad Girls	3/2
Jet's Place	3/2
Fannies	3/2
Alternative	0/5
Station II	0/6
<b>Recreational Division</b>	W/L
Triangle	4/1
La Cage	4/2
Wreck Room	3/3
M&M	2/4
CCF	1/4
<b>Competitive Division</b>	W/L
This Is It	5/1
Ballgame	4/2
Your Place	4/2

## Results, May 13

CCF 20, Alternative 10  
 Bad Girls 32, Jet's Place 3  
 Bad Girls 13, Fannies 5  
 Jet's Place 16, Alternative 14  
 La Cage 19, Station II 1  
 This Is It 12, Wreck Room 5  
 This Is It 13, La Cage 1  
 Wreck Room 23, Station II 5  
 Your Place 12, Ballgame 4  
 Triangle 10, M&M 3  
 Ballgame 19, Triangle 9  
 Your Place 15, M&M 3

## Standings

<b>Mixed League</b>	
Bermuda Triangles	78 34
Raisin Triangles	76 36
Square Triangles	65 47
Sober Sisters	62.5 49.5
Klinkiti Kleins	61.5 50.5
Generic #7	59 53
Landmark Leather Bears	59 53
Beer Garden Chumps	59 53
Scratch and Sniff	57.5 54.5
Guppies from Hell	52.5 59.5
Station II	50 62
Boot Camp Belters	49 63
Laverne and Company	46 66
N.P.S.C.	45 67
M&M Dollies	45 67
Bowling De Kleins	31 81

## Northwest Gay/ Lesbian Sports Fest

Seattle, WA- The deadline for entering events in the 1989 Northwest Gay/Lesbian Sports Festival is rapidly approaching. Individuals or teams must have their entries postmarked by June 15 to take part in the 14 sport extravaganza in Seattle during the July 1-4 Independence Day holiday weekend.

Occurring 13 months before Gay Games III, the Sports Festival will likely be the last opportunity for Lesbian and Gay athletes to compete against each other, especially in sports such as fencing, martial arts, and croquet.

The 1989 Northwest Gay/Lesbian Sports Festival offers competition in tennis, softball, croquet, swimming, bowling, racquetball, diving, water polo, martial arts, running, bench press, golf, fencing, and volleyball.

Weekend events for participants include a banquet on Monday, July 3 and an all-athlete party Sunday, July 2 at the aquarium on Seattle's historic waterfront.

Host housing can be arranged for athletes who wish it. In addition, a block *contd. on page 49*

WRECK ROOM



MILWAUKEE, WISCONSIN

266 East Erie

# THE GREAT MILWAUKEE CLASSIC WEEKEND

THURSDAYS

FREE SLICE OF PIZZA WITH EACH DRINK  
10 PM - 1:30 AM

FRIDAYS

COMPLIMENTARY BUFFET  
6 PM - 8 PM

SATURDAY & SUNDAY

BLOODY MARYS & SCREWDRIVERS \$1.75  
PITCHERS OF BEER \$3.00  
12 NOON - 9 PM

GOOD LUCK TO ALL TEAMS!

contd. from page 16

1989 at 7:00 p.m. at the UWM Union Cinema, 2200 East Kenwood Boulevard. The cost is \$5.00 (negotiable).

The series blends melodrama, lust and comedy with some of life's more serious issues such as coming out, lesbian parenting and the pleasures and perils of monogamy. And since no soap opera is complete with commercials, "Two in Twenty" is filled with zany ads for fictitious products. Combining dyke drama and off-beat humor, "Two in Twenty" is an exhilarating celebration of gay life.

## La Crosse "Picnic In The Park"

Sunday, June 25 is the date for the third annual La Crosse "Pride Day In the Park." The picnic will be held at Goose Island County Park, shelter number 3. The park is located 2 miles south of La Crosse on Highway 35.

The picnic begins at 1:00 and runs till 8:30 p.m.. Admission includes beer, soda, music and dancing. In addition the park is a perfect place to fish, hike and canoe. Canoes and boats can be rented from the park headquarters and camping reservations can be made through the park office by calling (608) 788-7018.

Admission buttons are \$3.50 in advance and \$4.00 at the gate. There will be discounts given for large groups.

## Eau Claire "Unity" Picnic

Eau Claire's beautiful Riverview Park will be the site for the Fifth Annual Unity Picnic, to be held July 1 and 2. An In Step staffer who is a former U.W.-Eau Claire alumni, assures it is the summer highlight for the Gay and Lesbian community in that part of the state.

The picnic begins at noon on Saturday. There will be games, prizes, beer, food and dancing. One event Tim always enjoyed watching were all the "closet" queens running around in the Drag Race.

The weekend will conclude with a Unity Show to be held Sunday evening at 8 at

The Downtown Express.

Tickets for the picnic are \$6 in advance. For tickets or more information write: Unity, P.O. Box 983, Eau Claire, WI 54702.

## MGMG Seeks \$

The **Madison Gay Men's Chorale** needs your help. The group is currently trying to raise money to help fund chorus productions and also for their upcoming trip to the Gayla Chorale Convention in Seattle. To donate or for more information about the group, contact them at: MGMC, Memorial Union Box 605, Madison, WI 53706.

## Friendship Group

Metro Milwaukee Friendship Group (M.M.F.G.) has announced their June activities. With the spring and summer seasons bringing warm weather, M.M.F.G. offers more outdoor events.

A bike trip along Milwaukee's scenic southside bike trail is planned for Saturday June 24. The ride will be a leisurely trek through the area so inexperienced bikers can participate. The approximately 16 mile tour will include a lunch stop.

All you flea market and rummage sale buffs are invited to tag along to the Seven Mile Fair on Sunday, June 25, to shop-until-you-drop. Afterward the group will feast at one of the area's ethnic restaurants.

The dinner-of-the-month for June is a return to one of Milwaukee's favorite Serbian eateries. M.M.F.G. dinners are held the Thursday after the monthly meeting and this month the date is June 15. Those connoisseurs indulging are asked to sign up ahead so there is an accurate head count.

M.M.F.G. meets the second Saturday of each month at the home of one of its members. If you would like to attend the next meeting, a specific activity or want more information about the group, please write to **Metro Milwaukee Friendship Group**, P.O. Box 93202, Milwaukee, WI 53202.

# ROD'S

## PATIO GRAND OPENING MEMORIAL DAY WEEKEND

Kick Off Party Friday, May 26  
Drink Specials & Cookouts All Weekend  
Outdoor Dancing Saturday & Sunday

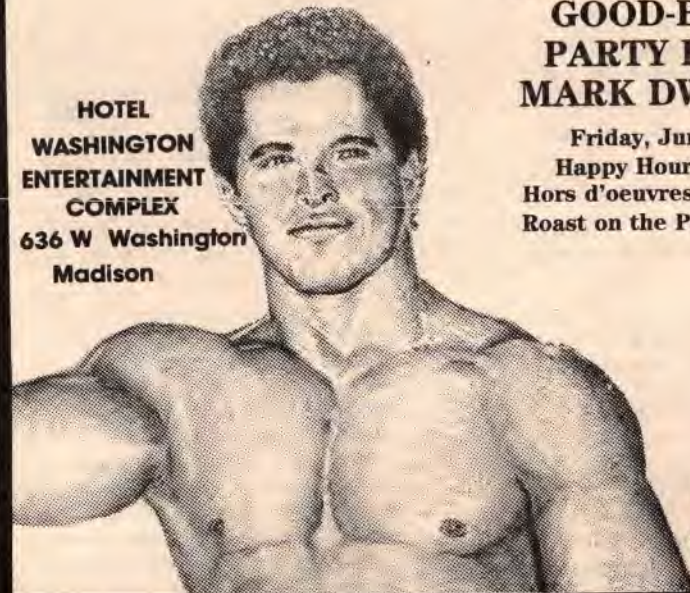
## RODNEY'S BIRTHDAY CELEBRATION

Monday & Tuesday, May 29-30  
(He's Getting So Old It Takes Two Days!)

## GRADUATION/ GOOD-BYE PARTY FOR MARK DWYER

Friday, June 2  
Happy Hour with  
Hors d'oeuvres, Buffet,  
Roast on the Patio 7:30

HOTEL  
WASHINGTON  
ENTERTAINMENT  
COMPLEX  
636 W Washington  
Madison



GOOD  
LUCK  
TO ALL  
THE  
BALL  
PLAYERS

...Come & See  
Us Sometime!



Corner of First & Washington  
Milwaukee, Wisconsin 647-9950  
Hours: M - F, 7 - Close; S - S, 4 - Close

## NIGHTLY SPECIALS

MONDAY

### TEQUILA MONDAY

\$1.75 Jumbo Margaritas

\$1.25 Shots of Cuervo

TUESDAY

### SLAMMER & WAPATULI NIGHT

\$1.00 Shots

WEDNESDAY

### MEN'S NIGHT

\$1.25 Rail Drinks &

Domestic Beer

THURSDAY

### PITCHER NIGHT

\$3.00

FRIDAY & SATURDAY

\$1.00 Shots of Rail

Schnaaps

SUNDAY

\$1.25 Bloody Marys

& Screwdrivers

## MILWAUKEE

## CLASSIC

## WEEKEND HOURS

Saturday & Sunday

10 a.m. - Close

Monday (Memorial Day)

12 noon-Close

contd. from page 45

Association (WCAA) give birth to the Memorial Day 'Blow Out' softball tourney in direct competition against the Classic.

This year promises to be the biggest Classic ever. The WCAA 'blew out' their Blow Out tournament, when their league was dissolved the weekend of May 6th. Teams from across the country that had already purchased plane tickets to Chicago for their tourney, instead opted to join in Classic play. As of May 11th, the Classic committee was being bombarded with last minute applications from across the country. The committee decided to cut-off the number of entries at 33, the most they can hold in their banquet facility. Nearly 40 teams vied for those 33 slots. The most teams the Classic had ever hosted was 25, making '89 the largest and most successful Classic ever. Even without the teams joining after Chicago canceled, Milwaukee still would have broken participation records. Twenty-seven teams had registered prior to May 5th. (And how appropriate that is for the 10th Classic!)

Teams will be coming to Milwaukee from cities that have never been here before, and this is our chance to show the U.S.A. just how great a city Milwaukee is! As always, our hospitality and friendliness will win them over, I'm sure!

Let's all pray for a great weather weekend. Most years the weather has been classic, but there have been a few where it could have been much warmer and sunnier. The better the weather, the more Milwaukee will come out to cheer-on the players. The bigger the crowd, the more fun everyone will have. See the Classic sports section for full scheduling information, and the calendar of Classic events, and join in the festivities. Be sure not to miss the opening ceremonies Saturday afternoon at Mitchell Park diamonds, behind the infamous Domes. Stay the afternoon, and enjoy the colorful pageantry of the traditional opening ceremony, and the hot action of the games before and after. Also, don't forget the Classic action on the other side of town. Not all games could be played at Mitchell, so many teams will compete at West Milwaukee Park (52nd and Burnham).

It will be a ball...I guarantee!

# BALLGAME

Open Mon.-Wed., 2-Close  
Thurs.-Sun., 11-Close

196 South 2nd Street  
273-7474

## WELCOME MILWAUKEE CLASSIC PLAYERS & FRIENDS

—RECEPTION FOR PLAYERS—

Friday, May 26, 8-10 PM  
Hors d'oeuvres Served

## SOFTBALL TEAM FUNDRAISER

\* Win a Trip for Two to St. Louis or Kansas City  
Limo, Air, Hotel: Tickets on Sale Now: June Drawing

## COCKTAIL HOUR, Monday - Friday, 4 to 8 p.m. HALF PRICE Drinks & Specials

- Monday - \$1.00 Rail & Domestic Beer; 75¢ for any Schnaaps
- Tuesday - Pull Tab Nite
- Wednesday - Tap Beer Nite: 50¢ a glass or \$2.50 pitchers
- Thursday - Buck Nite, Rail/Beer/Wine
- Friday - Play our Lotto from 4 to 8: Cash Prizes
- Saturday & Sunday - Our famous \$1.40 bloody marys, screws, salty dogs, greyhounds; \$1.75 morning glories

### ALL OUR DRINKS ARE DOUBLES

PIZZA SERVED ANYTIME

PARTY ROOM AVAILABLE

HOT DOGS SATURDAY & SUNDAY

# HEALTH

## 1 in 77 NYC Moms Infected with HIV

[Equal Times]- One out of every 77 women in New York City who had a baby in 1988 was infected with HIV, the virus believed to cause AIDS, according to a study by the New York State Health Department.

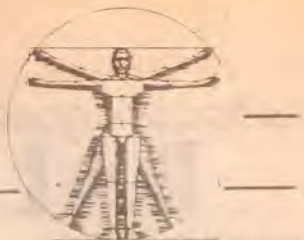
Additionally, one of every 150 new mothers throughout the state tested positive for antibodies to the virus. The study was based on samples taken from virtually every newborn child in New York State between November 30, 1987 and November 30, 1988.

Since it is known that sharing needles among drug users is a major cause for the spread of the viral infection, health professionals have assumed that the women were infected by direct sharing of needles or by having sex with infected drug users.

## AIDS Physicians Publish Journal

The Chicago-based Physicians Association for AIDS Care (PAAC), whose members have cared for over 36,000 AIDS and ARC patients, has begun publishing PAACNOTES, a bimonthly news journal. Although PAACNOTES features several clinical topics in each issue, the magazine's focus is interdisciplinary and includes reports on ethical, legal and political dimensions of the HIV epidemic.

According to Gordon Nary, Executive Director of PAAC, the magazine is designed to provide current information on treatment to physicians, other healthcare professionals and persons with HIV infection. One of PAACNOTES' distinguishing features is a section headed "Patient Notes," which provides a forum for persons with AIDS (PWAs) to discuss issues of importance to them. Nary states PAACs' mission includes fostering a more patient-oriented



healthcare system. To achieve this the patients' perspectives on their illness must be better understood by physicians and other caregivers.

For a sample copy of PAACNOTES, send \$5.00 for postage and handling to the Physicians Association for AIDS Care (PAAC), 101 West Grand Avenue, Suite 200, Chicago, IL 60610.

## AIDS Audio Tapes

Los Angeles- To meet the need for timely, accessible information on all aspects of the growing AIDS crisis AIDS Audio Update will be releasing monthly audio cassette tapes on issues important to all persons living with AIDS and all others concerned about the disease. June's premier issues is "Highlights of the Fifth International Conference on AIDS, Montreal, June 4-9, 1989." Mark Katz, M.D., a Los Angeles physician active in AIDS support organizations, will be presenting an in-depth, first-hand account of this important conference.

July's issue will feature Michael Gottlieb, M.D., immunologist and pioneering physician in the AIDS epidemic, in "Conversations With Long Term Survivors of AIDS."

Each Month a new tape will cover similar important issues associated with the AIDS crisis. People with AIDS are employed and actively involved in AIDS Audio Update. Thirty percent of pretax profits goes directly to organizations supporting people living with AIDS.

Tapes are available individually for \$10.00. An annual subscription of twelve tapes is available for \$99.00. (California residents add 6.5% sales tax.) Tapes may be ordered from the following address or by calling the 24 hour toll-free number: Aids Audio Update, P.O. Box 461370, Los Angeles, CA 90046, 1- (800)-999-9559 extension A. Payment may be made by

contd. on page 27

## classic x

contd. from page 44

way to do it. The birth of the Classic put Milwaukee on the national Gay and Lesbian sporting map. The Thanksgiving weekend Holiday Invitational bowling Tournament (HIT), and the Classic are 'Grand-Daddies' in the sense they are two of the oldest continuing G/L sporting events in the country. It's quite a claim for Milwaukee, and something we should all be proud of, along with being the first and still only 'Gay Rights State.'

The only years Milwaukee didn't host the Classic since its 1978 inception were '79 & '85, when Milwaukee hosted NAGAA's G/L World Series of Softball over Labor Day Weekend. The organization and fund raising involved in hosting the Series, made it impossible to host the Classic that Spring.

Due to the escalating cost and work involved in hosting the Classic, Wayne suggested that the SSBL take over the Classic and in 1986, the first edition of the Milwaukee Classic was born. The format stayed basically the same, and many of the same individuals involved in the previous tournaments organized the new Milwaukee Classic, including: Ron Burbey, Tom Salzsieder, Suzi Arnold, Ken Wenzel and Jerry Warzyn. In '86, out-of-town teams included representatives from Chicago, the Twin Cities, New York, Toronto, Boston and Atlanta. '86 also saw an explosion in support from many of Milwaukee's bars and businesses. Their support was gained in '85 thanks to Milwaukee hosting Series 9, and built upon in '86 when the weekend became known as the Milwaukee Classic.

In '87 the Classic introduced separate tournaments for recreational teams and competitive teams. Some cities were tired of the same teams or cities winning year after year due to their higher skill levels, and the creation of the recreational division gave them a chance at winning over similarly skilled teams. Some teams are in it just to win, others just to have fun, and this gave them both a chance.

'88 saw Chicago's Windy City Athletic

contd. on page 46

231 S. 2nd Street

OPEN NOON DAILY

C'EST LA VIE

WEDNESDAY NIGHT,  
9 to 1

\$1.50 Doubles,  
25¢ Soda &  
Tap Beer

THURSDAY NITE LOTTO

Drawings Start  
10 PM - ???  
Free Slice Pizza  
With Double

WELCOME CLASSIC PLAYERS!

IF YOU DIDN'T SCORE AT THE GAME, BRING YOUR LUBE & RUBBERS AND SCORE AT C'EST LA VIE!

SUNDAY AFTERNOONS

\*Dart League  
\*Buffet  
\*25¢ Taps &  
\$1.50 Doubles

# Classic X

By Tom Salszeider

The 10th Annual Milwaukee Classic Softball Tournament will be held over Memorial Day Weekend. The Saturday Softball Beer League (SSBL) will play host to 33 teams from throughout the United States and Canada, the largest tournament ever held in Milwaukee, and one of the largest held anywhere. Because of the cancellation of a tournament by the Windy City Athletic Association in Chicago, more teams made plans to motor 90 miles north to Milwaukee to join our tournament.

The Milwaukee Classic was started in 1978 as the Wreck Room Classic and has been held each year except for 1979 and 1985 when Milwaukee played host to the Gay Softball World Series.

A third division has been added to the tournament this year. A Women's Division will be held along with the Competitive and Recreational Divisions. The Women's Division includes M&M Bad Girls, Jet's Place, Alternative, and Lambda Rights Network of Milwaukee; 1270 - Boston; Lost & Found - Chicago; and Angie's Birds from Kansas City. Competitive teams include Ballgame, This Is It, and YP of Milwaukee; Sidetracks, Bistro, Christopher Street and Harrods of Chicago; Newark - Niners; Saloon Americans - Twin Cities; 'BAMA Express - Birmingham; Stuff - Kansas City; Burkhart's - Atlanta; Bikestop - Philadelphia. The Recreational Division includes M&M Peanuts, La Cage, Triangle and Wreck Room of Milwaukee; Ty's Breakers and Buddies of New York; North End and Carol's Speakeasy of Chicago; Stan's Pub and Venture Inn of Philadelphia; Mets - Boston; Colby Generals - Toronto; and Numbers of Nashville.

Teams will arrive on Friday, May 26 and will register at the Marc Plaza Hotel. Games will start on Saturday morning at 8am at Mitchell Park, behind The Domes, and at West Milwaukee Park 52nd and Burnham. Opening ceremonies are scheduled for 1pm at Mitchell Park. Games will continue until 7pm on



Saturday evening. On Sunday, games will resume at Mitchell Park only, at 8am. The Women's championship game is slated for 1pm, the Recreational Division championship will begin at 2:30, and the Competitive game will begin at 4pm.

Following the games, the players will be feted at the Awards Banquet at the War Memorial Center. Cocktails will be served from 5:30 to 7:30, with dinner at 7:30, and entertainment and awards follow. Because of the limited space of the War Memorial, banquet tickets will not be available to the public, as in the past.

The SSBL welcomes the out-of-town players and fans, and hopes everyone has a great time during their stay in Milwaukee.



## Classic Thoughts...

By Ron Gelman

Memorial Day Weekend, 1989 marks the 10th annual Milwaukee Classic Softball Tournament. That's a big milestone for any event, much less a softball tournament for Gays and Lesbians.

### Bravo!

The Milwaukee Classic, originally born as the Wreck Room Classic Invitational softball tournament, has evolved over the years to be 'thee' G/L softball tournament in the U.S.A. Of course, there is the North American Gay Athletic Association (NAGAA)'s G/L World Series of Softball, but that's a different animal.

When Wayne Bernhagen, deceased former owner of the Wreck Room, decided to start the annual Milwaukee tourney, the Saturday Softball Beer League (SSBL) in Milwaukee was in its infancy. Gay invitational softball tournaments were also a new idea. Wayne wanted to promote Milwaukee, and its Gay/Lesbian community, and softball seemed a good

cont'd. on page 45

21

# Sunday, May 28 MR. & MISS GAY FOX VALLEY PAGEANT

SHOW STARTS 9:30 PM

Memorial Day Monday,

May 29

# BAR BUST, 5 to 9 PM

CELEBRATE THE GRAND OPENING OF OUR  
DECK & VOLLEYBALL COURT WITH A  
BBQ COOKOUT

Coming June 23

# THE BOYS TOWN GANG

AT THE PIVOT CLUB

4815 W. Prospect, Appleton  
(414) 730-0440





# the arts

by Kevin Michael

## “Juno and the Paycock”

By Kevin Michael

The closing production of the 1988-89 season of the Milwaukee Repertory Theater was Sean O’Casey’s “Juno and the Paycock.” The play is set in 1922 of the Boyle family apartment in a tenement house in Dublin. Remember at this time that from 1916-1924, the Irish were involved in a fight for their independence from England (not unlike what is happening in Northern Ireland today).

Kenneth Albers did a most convincing job of direction by blending the elements of his assembled cast into a fine honed and textured performing ensemble. For this very reason, the play was the best that I had the opportunity to view on the main stage this season.

Rose Pickering, as Juno, turned out one of the best of her characterizations to date. Too often her strong personality and acting choices overpower the character such that the audience is subjected to another Rose Pickering as.... However in this case, her choices were right on target and the character blossomed quite beautifully.

So too, James Pickering’s “Joxer” Daly, was believable and quite amusing. Here also, Pickering pulled in much of the overdone humor and exaggeration which often accompanies his acting. Joxer worked well by not being overpowering.

John Malloy’s turn at “Captain” Boyle was sculpted well and did not go beyond the fine tuning of the entire production. In addition good characters were developed by Barry Lynch as Johnny Boyle, Marie Mathay as Masie Madigan, and Steven J. Gefroh as Jerry Devine.

Rose Pickering’s song delivered with Catherine Lynn Davis in Act II kept the simplicity of the piece but was performed very well. In addition, all actors used an

Irish brogue which did not interfere with the delivery of their lines and was effective as well.

The set offered a believable shanty look and the lighting complemented effectively.

Albers impressed me here much more as director than he ever has on stage. He was able to blend this cast ever so well and to create just the right “feel” for this compelling O’Casey piece. It would be my hope both as a director and as Associate Artistic Director, Albers be used in this capacity much more. He was able to draw out from these actors a piece that made for “a darlin’ play” to utilize the Rep’s own advertising strategy. With this as a measure, I can’t wait to see what next season will have to offer. Bravo!

## “The Rat In The Skull”

By Kevin Michael

It was much in the same vein that I had the opportunity not long after attending “Juno” at the Milwaukee Rep to view this play presented by the Milwaukee Chamber Theatre as part of their Seventh Annual Shaw Festival.

George Bernard Shaw represents much of what is great about our theatre tradition. His use of the language is superb and his plays such as “Saint Joan” and “Pygmalion” are great works. However, it is not often that all remember that Shaw was an Irishman born in Dublin. He was greatly influenced by the works of Ibsen and he saw theatre as a unique platform for advocating social change and reform.

With this as a backdrop, it is my personal belief that Shaw, himself would be most pleased to see this production of “The Rat in the Skull” included within this festival. “Rat” deals with modern day tensions and the issues which

contd. on page 23

# MILWAUKEE CLASSIC



43  
& 9

## HIGHLIGHTS

\*Friday, May 26th—Registration at the Marc Plaza, 5 to 11 p.m.

\*Saturday, May 27th—8:00 a.m. play begins for Competitive Division at Mitchell Field (behind the Domes) and for Recreational and Women’s Divisions at West Milwaukee Park (50th & Burnham)

Opening Ceremonies at 1 p.m. at Mitchell Park

\*Sunday, May 28th—All games at Mitchell Park, Championship Games begin at 1:00 p.m. Banquet and Awards Ceremony at the War Memorial Center 5:30 p.m. Cocktails 7:30 p.m. Dinner & Awards

# Classic '89



## Classic Welcome Letter

Dear Players, Guests and Friends:

Welcome to the 1989 Milwaukee Classic Softball Tournament. This is a special year for us as it marks the 10th Anniversary of our Memorial Day Weekend Tournament and, in addition, it is the largest tournament the S.S.B.L. has ever hosted. It is a record of consistency the S.S.B.L. holds with pride.

A well earned "thank you" to all the men and women of our league, sponsors, supporters and volunteers whose support, year after year, has allowed the S.S.B.L. and the Milwaukee Classic to be a success.

While in Milwaukee we encourage you to visit our sponsors and supporters, but most of all, enjoy your brief stay.

Good luck to all the teams!

Sincerely,  
Lou LaSota  
Commissioner  
Pat Lasota  
Women's Commissioner

Ron Thomas  
Men's Tournament Director  
Patty Brown  
Women's Tournament Director

## Where to Find Out- Of-Town Teams...

- Ballgame:** Ty's (New York); Express (Birmingham)
- This Is It:** Americans (Twin Cities); Harrods (Chicago)
- Your Place:** Sidetracks (Chicago); Stuff (Kansas City); C-Street (Chicago)
- La Cage:** Bistro Too (Chicago); Bikestop (Philadelphia); Niners (Newark)
- M&M:** Mets (Boston); Numbers (Nashville)
- Triangle:** Generals (Toronto); Burkharts (Atlanta)
- Wreck Room:** Buddies (New York); Venture Inn (Philadelphia); Carol's (Chicago)
- Alternatives:** Angie's (Kansas City); North End (Chicago)
- Jet's Place:** 1270 (Boston); LRN (Milwaukee)
- M&M:** Lost and Found (Chicago); Stans Pub (Philadelphia)

## Classic Schedule Highlights

- **Friday, May 26th** — Registration at the Marc Plaza, 5 to 11 p.m.  
11p.- Team Managers Meeting at 11p.m., hospitality suite.
- **Saturday May 27th-** 8:00 a.m. Play begins for Competitive Division at Mitchell Field (behind the Domes) and for Recreational and Women's Divisions at West Milwaukee Park (50th & Burnham)
- Opening Ceremonies at 1 p.m. at Mitchell Park
- Games from 2p.m. until 8p.m. at both Parks.
- **Sunday, May 28th** — All games at Mitchell Park, Championship Games began at 1:00 p.m.

Banquet and Awards Ceremony at the War Memorial Center  
5:30 p.m. Cocktail  
7:30 p.m. Dinner & Awards

contd. on page 44

contd. from page 22

confront the classic struggle in Northern Ireland between Protestant and Catholic. It's much as if we have traveled through time from "Juno's" time frame in the 20's to today with the same struggle, conflict, and lack of resolution to this many sided dilemma.

The play features four characters only and yet all represent one of the players involved in the current conflict. We first meet Roche, the Catholic terrorist who wishes a free Ireland at all costs — including himself — to reach his goal. He is presently interred in an English police station in London and has just been "worked over" by a Protestant Northern Irish detective. In the London station is the Sergeant, Harris, who must investigate the allegations of brutality when his rookie officer, Naylor, a black, left the interrogation room. Harris is a Brit who wishes that the "paddys" would just allow him to retire in peace and settle their own problem and Naylor, whose race too has suffered much persecution and bigotry, would rather just work an eight to five day of "coppering" with no care or concern for the issues of the day. Thus, his racial status is vital to the full presentation of the question by Ron Hutchinson, the playwright.

The direction of this play by Tom Blair, an actor with the Milwaukee Rep, is first rate. He builds the emotions and hate in this piece to a great piece of theatre. It's as if we are watching two men at the end of their ropes who represent the totality of the populations of both sides in Northern Ireland.

The presences of both James DeVita as Roche, and J.D.Nelson, as Nelson, the Protestant interrogator are acting dynamite! They explode and burst at just the right moments for maximum effect. Don Forston's Harris is also good, only LeWan Alexander's Naylor, is not fully on the mark.

The simplistic set works well as does the media evidence of the violence which sets the right tone for this examination of the brutality of this unfortunate situation in all its ugliness. Also, the blocking and use of space which is often violated aptly is a metaphor for the real life-lived horror.

An excellent piece of work by the Milwaukee Chamber Theatre. Encore!

## Clavis Theatre: 'The Glass Menagerie'

Clavis Theatre Ensemble performs "The Glass Menagerie" by Pulitzer Prize-winning playwright Tennessee Williams through June 11 at the new theatre in the lower level of the Prospect Mall.

In staging this American classic, Clavis Theatre Ensemble adds a new dimension to the story of a Southern family striving to maintain its dignity and sense of humor in the face of poverty and despair. Known for bringing vibrant works of contemporary theatre to Milwaukee, including 28 premiere productions, Clavis Theatre's daring and innovative approach will reopen the eyes of audiences to the beauty, tenderness and humor in Williams' masterful drama.

"The Glass Menagerie" involves the fragile relationship between Amanda Wingfield and her son and daughter, Tom and Laura, as they struggle with each other in a search for inner peace. Amanda drives Tom into a fantasy world of movies and liquor, and Laura into an illusory world of glass animals, as the family relationship becomes violent, tender and comic by turns.

The play stars Brian Gunter, who played Jack Henry Abbott in Clavis' recent production of "In the Belly of the Beast," and Kay Knudsen, who performs in the current production of "Agnes of God." Ensemble members Peter Reeves and Amy Zeh also star.

Performances are \$14.00 Fridays at 8 p.m. and Saturdays at 9 p.m.; \$10.00 Wednesdays, Thursdays and Sundays and \$9.00 Saturdays at 5 p.m.. Reserve tickets by phone: 273-3043.



# WELCOME CLASSIC PLAYERS!

## the dance

Join Us for the Latest in Dance Music  
All Weekend Long!  
DJ Kim Nightly from 10 PM

## the shaft

Our Lower-Level Levi/Leather Bar  
Open 9 PM Nightly

## annual cookout

Join Us Memorial Day Monday For  
Our 3 PM Patio Cookout



CLUB 219  
219 S. 2nd St., 274-3732  
Milwaukee

HOURS: Mon.-Fri. Open 4 PM  
Sat. & Sun. Open 2 PM  
2 for 1 Cocktail Hr. Mon.-Fri.

Fannie's Wishes to Extend an Invitation To All  
To Support This Worthy Cause

# THE SOCIAL EVENT

## ENTERTAINERS

# AGAINST AIDS

Sunday, June 11

IN THE STREET / RAIN OR SHINE  
FANNIES, 200 E. WASHINGTON  
Bar Opens at 1 PM  
Showtime 4:30

Entertainers Include:  
Holly & Company, Several 219 Girls, Legs,  
Mary Anne, Rochelle, Penny, Cindy Schu,  
Cheri, Kim & Other Guest Entertainers!  
Emceed by Holly Brown

FOR THE BENEFIT OF THE MILWAUKEE AIDS PROJECT (MAP)  
Proceeds Go To Direct Patient Support of Milwaukee Area PWAs

TICKETS: \$5 Advance/\$6 Door  
TABLES: \$5 (small), \$10 (large)  
TICKETS & TABLES NOW ON SALE AT: LaCAGE,  
M&M, C'EST LA VIE & FANNIE'S



# inklings

by Tim Hensiak

## Roommate's Lover Becomes a 'Live-In'

Although he's embarrassed to admit it, the one thing Mike wants more than anything else in the world is to fall in love with an absolutely wonderful guy. Next to that (to be honest a distant second best) he would like his best friend and roommate John, to fall in love with an absolutely wonderful guy. And that is exactly what happens.

Handsome, intelligent, articulate and kind, Luke has only one problem: his intensely moody, possibly totally bananas roommate who once threw a knife (fortunately, it was dull) at a date Luke brought home.

Understandably, John and Luke's romance unfolds at John's place....Which is also Mike's place. Luke is a big guy, with a big appetite, and Mike can't help noticing that more than one-third of every meal he cooks disappears. Or that when Luke plops his huge body into Mike's antique rocking chair, there is an ominous creaking. Or that he never does dishes or dusts. "I'm sharing an apartment with bigfoot," Mike mutters to himself.

The situation takes a rapid turn for the worse one day when Mike comes home from work to find John and Luke, as per usual, stretched out on the couch. Before Mike's appalled eyes, another Luke, his friend Bill, clops out of the kitchen.

"I couldn't believe it!" he shrieks to me from a corner phone booth a few moments later. "I can't take it anymore! It's a horror movie-Clone Of Bigfoot!"

What did you say to him? I ask.

"How can I talk to someone on cloud nine?" Mike wails. "I can't tell my best friend his boyfriend is in the way."

What kind of best friend, I say, practically installs a man in the apartment you share without saying a word?

"Maybe I'm just jealous," Mike says miserably. "If I had a boyfriend, too, I know it wouldn't bug me so much."

But you don't have a boyfriend at the

moment. And if you did all four of you would probably be going crazy crammed into a not-quite-two-bedroom apartment.

"But where can they go? His place is out and they can't neck in the back row of the movies."

True, I admit. You can't just tell John to find another apartment, after all, the place is half his. But you can try to work out some sort of compromise so you don't feel pushed aside.

"Get serious," Mike said, "What am I going to say, 'Luke can't come over on Tuesdays or Fridays?'"

Why not, I say. Being specific can only help. In fact, I think you should go home right now and make an actual list of what you don't like.

Which is precisely what Mike does, that same evening. He is surprised to find that when he gets down to the nitty-gritty, the catalog of Things That Drive Me Up the Wall-such as Luke's gargantuan appetite, and his friend Bill - isn't so long after all.

Nonetheless, Mike's hand is shaking when he gives John the list the next night, while Luke is out picking up a jumbo pepperoni pizza.

If John were a perfect friend and an ideal roommate - which he isn't, he would have avoided this mess in the first place - he would have immediately realized his error in judgment and apologized for his thoughtlessness. Instead, he blows up for a full five minutes.

Then he gives Mike a hug and apologizes.

(Mike tells me all this later, calling from his apartment, where he is contently alone eating leftover jumbo pepperoni pizza while John and Luke are taking in a double feature.)

*contd. from page 39*  
overgrown Snoopy that it is the world's largest condom.

Of course, the final edited version of these movies may be slightly different, but in any case I hope to see you at the movies.

Copyright 1989 by Wells Ink

25

# glamour

## The 219 Girls Show

SPECIAL GUESTS

## MEMORIAL DAY WEEKEND



CANDI STRATTEN

Showtimes:

**FRIDAY, MAY 26,  
SHOWTIME 10:30**

**SUNDAY, MAY 28,  
SHOWTIME 11:30**

**WITH MISS KELLY LAUREN  
(MISS CONTINENTAL USA '89)**



KELLY LAUREN

**CLUB 219 — THE BEST IN FEMALE ILLUSION**

# steppin' OUT

by Ron Geiman



Back again! It's been an exciting eventful two weeks since I last wrote this column. I'm surprised the last issue even got out, considering the **Madison March Weekend** fell on our production weekend. I was in Madison from Friday evening May 5th until Sunday afternoon, then had to high-tail it back here & get the magazine ready for our Monday print date.

The **Names Project Quilt** display was an emotional highlight for me. You can read more about it in the Briefs section, but as their buttons say "See It... And Understand." What had the most impact on me was hearing the recitation of The Names of all those who have had quilt panels made for them. I'd recommend in the future, that the readers of The Names be taped, and then the tape replayed for the rest of the weekend. I was there for the Opening Ceremony & heard The Names. I went back on Sunday & looked at the panels when there wasn't such a crowd to contend with. But, I missed hearing The Names being read in the background...The Names made it even more emotional.

The Rally & March were reaffirming in their pride & camaraderie. Considering the cold weather, I was amazed at the turnout. The In Step entry was in the last quarter of the Parade line-up & I didn't get a true feel of the crowd size until we were all lined up on State Street & I could see the march stretching 7 or 8 blocks, from curb to curb. It was beautiful. If Milwaukee can get that kind of turnout, the committee should be very satisfied.

All the Madison bars were packed wall-to-wall. People came in from all over the state, and several groups from out-of-state participated. A bus load of people from Green Bay's Club 125 made their presence known, too.

Meanwhile, I had my photographer, Doug, cover things back here in

Milwaukee. The Mint's 40th Anniversary celebration packed in the crowds all afternoon & evening long. Congrats to Betty, Rosie & staff on reaching the 40th mile stone...quite a feat to accomplish. I heard the food was great.

That evening, across the street at **Shadow's II**, it was customer appreciation nite, complete with drinks, more food & door prizes.

After the Madison trip, **Club 125** headed back to the Bay for a Sunday night show by the Canadian male dancers. Those men... they're enough to make anyone pledge allegiance to the Maple-Leaf flag!

The **Napalese** played host May 9th to Mr. & Miss Pivot, Cassie Carter, and more as part of their weekly Tuesday nite entertainment schedule. Don't forget, the first Tuesday of every month is their talent contest.

Happy Birthday to **New Leaf** co-owner Al, who celebrated his aging at his Janesville bar. The big 30 - it's all downhill from there...

**Brandy's II** celebrated its grand opening weekend May 12 through the 14th, with lots of cocktails, a Saturday night party with free tap beer, hors d'oeuvres & champagne & a Sunday Beer Bust. Jerry & his staff seem to have a hit on their hands. The original Brandy's was totally destroyed by fire a few months back & it's good to see them back in business.

Wausau's **R-Bar** had one of its rare shows May 13th, when they presented "Kings & Queens for Mother's Day." The Queenie Sisters made an appearance, as well as Rhonda & guest entertainers. It was show time at Club 125 on the 14th, with the return of Ms Mona & Rhonda. That Rhonda sure gets around.

That brings us up to deadline time, the afternoon of the 18th, and thank God because I have writer's cramp!

contd. on page 27

and (Holy Blackmail, Batman!) forces them to end their crime fighting careers. The movie ends on a high note when the producers of PBS's "This Old House," impressed with their handiwork on the Bat Cave, tap the Caped Crusader and Boy Wonder to take over the jobs left vacant by the departure of host, Bob Villa and ace carpenter, Norm.

### • Lethal Weapon 2

Film goes who were pleased by shots of Mel Gibson's bare behind in the original will really have something to be excited about in this experimental film sequel. Set entirely at a nude beach, the movie uses close-ups and interesting camera angles of Mel, lying on his stomach and talking about why he never

worries about getting tan lines. Definitely a three hanky movie, if you know what I mean.

### • Ghostbusters II

"Who you gonna call" when a demonic spirit casts a powerful horniness spell on the giant 100-foot Snoopy and Bullwinkle balloons used in the annual Macy's Thanksgiving Day parade? The Ghostbusters are forced to call in reinforcements when the huge inflatable creatures drown parade commentator, Willard Scott, underneath a spurt of slime after making love while floating above Long Island. The demon fighters put a cap on the messy situation by commandeering the Goodyear blimp and convincing the  
contd. on page 40

# The NEW LEAF



**COCKTAIL HOUR 4-8 MONDAY-FRIDAY**  
**50¢ TAPPERS, \$1.00 RAILS, \$1.50 TOP SHELF**

**NIGHTLY SPECIALS START AT 9 PM**

- Sunday: —DOUBLE HEADER!— \$4 Beer Bash 2 to 8 & \$4 Beer Bash 9 to Close (with DJ)
- Monday: 25¢ Tap Beer & \$1 Schnaaps Shots
- Tuesday: \$1 RAIL, DOMESTIC BEER & SHOTS  
•EUCHRE GAMES Start at 7 Sharp
- Wednesday: Womyn's Night, 75¢ Schnaaps Shots, \$4 BEER BASH & DJ
- Thursday: Men's Night, HALF PRICE NITE! 75¢ Rails/Domestic Beer/Shots; \$1.00 TOP SHELF; DJ
- Friday: \$5 BEER BASH Starts at 8 PM, plus \$1.00 Shots Schnaaps & DJ

**OPEN 4 PM DAILY / 2 PM ON SUNDAYS**

Hwy 51 South, Rt. #7, Janesville, Wisconsin  
752-5650

(Between Janesville & Beloit—on Hwy 51 Just South of the Airport)

Plenty of Private Parking



# j u i c y



# b i t s

by W.W.Wells III

## Summer Movie Preview

With their eyes on the box office and the lucrative summer movie season looming on the horizon, the not-so-original thinking Hollywood big-wigs, hoping to cash in on the relative success of Harvey Fierstein's Torch Song Trilogy, went scurrying across the country in search of gay writers willing to pen screenplays for this summer's big budget productions. I had the opportunity to read many of these original screenplays, and so I'm able to preview this summer's cinematic bill of fare, which brings back some of the screen's most recognizable heroes in stories with a slightly gay bent.

- Star Trek V: The Vinyl Brassier

The crew of the starship Enterprise encounters their biggest challenge when a huge, powerful and rather tackily dressed outer space slut, clad entirely in imitation leather with boobs the size of large asteroids, uses her gigantic plastic bra to slingshot the Enterprise through a black hole. Meanwhile, Mr. Spock demonstrates Safe Sex practices of his home planet and shows Dr. McCoy and Captain Kirk how to put on a condom made from "Vulcanized" rubber.

- Indiana Jones and the Last Cabaret

Cabaret's Liza Minelli and Joel Gray reprise their roles and help Indiana Jones battle the Nazis with some nifty song and dance numbers in this last hurrah for Steven Spielberg's daring swashbuckler. The movie sheds new light on Indy's private life and includes a peek into his closet to see what he's hiding. The film also features Oscar nominee and Tiger Beat centerfold, River Phoenix, as a young Indiana Jones battling an evil band of female impersonators in an opening flashback sequence, which explains Indy's fear of snakes when he's attacked by a drag queen brandishing a feather

boa.

- Batman

Scandal rocks Gotham City when the fiendish Joker, disguised as a swishy interior designer, convinces Batman and Robin to re-do the Bat Cave. While going over fabric swatches and paint charts, the Dynamic Duo let both their guard and pants down. The Joker takes polaroids

2139 Racine St  
Racine, WI  
634-9804  
Hwy 32 South

# JO'DEE'S

Int'l

## MEMORIAL DAY WEEKEND S.E.W.A.P. BENEFIT

'SOMEWHERE IN TIME'

MAY 26—SOCK HOP  
MAY 27—SURPRISE NIGHT  
MAY 28—WIN, LOSE OR DRAW  
MAY 29—COOK OUT  
Fun & Prizes Throughout  
The Weekend  
JO'DEE'S WELCOMES OUR  
NEWEST BARTENDER, BRIAN

contd. from page 26

I'm sure you'll all do your part to welcome all the Classic players to our fair city. The largest Gay/Lesbian softball event in Milwaukee's history occurs Memorial Day Weekend. Full details in the Jock Shorts/Classic section, elsewhere this issue.

This weeks Condom Sense: "When in doubt... 'Shroud your spout!'"

contd. from page 20

check, money order, Visa or MasterCard. The premier issue ships in June. AIDS organizations interested in receiving AIDS Audio Update or participating in the production or distribution of the series may contact the address listed above or call (213) 656-0860.

## AIDS Help Line Offers Research Info

Washington, D.C. [Milwaukee Sentinel]- Federal health officials have established a national, toll-free telephone service through which people infected with the AIDS virus can learn whether they are eligible for government-sponsored studies of experimental treatments at medical centers around the country.

AIDS activists frequently have criticized the National Institutes of Health for not making information on its studies of experimental treatments easily available to those interested in volunteering as research subjects.

The information service can be reached by dialing 1-800-TRIALS-A between 8 a.m. and 6 p.m. Milwaukee time.

**Thomas E. Martin**  
ATTORNEY AT LAW  
General Practice of Law  
Twelve Years Experience  
765-9413



515 S. Broadway  
Green Bay  
432-9646

# COMING LIVE to the

# NAPALESE LOUNGE

# Sunday, June 11

9 PM — 1 AM

# CAUTION

A SIX-PIECE DANCE BAND

\$2 Cover

PULL TABS DAILY  
4 to 7

# calendar



## THURSDAY, MAY 25

**SEWAP:** Anonymous HIV Testing for Racine/Kenosha area, 6 to 9p.m., at South Eastern Wisc. AIDS Project (SEWAP) office, 5830 3rd Avenue, Suite 101, Kenosha. Phone 658-3154. No appointment necessary.

**Main Club [Superior]:** Pot O'Gold Party, to benefit AARCH, AIDS Resource Coalition, 7p.m., Hors d'oeuvres, door prizes, raffles.

**La Cage:** Miss Gay Milwaukee Pageant (Wisconsin - USA Preliminary) presented by King Productions. First of eight preliminary pageants. Showtime 9:30p.m., contestants judged on personal interview, talent & evening gown.

## FRIDAY, MAY 26

**Edelweiss Champagne/Buffer Reception:** Foundation Community Center (225 S. 2nd), 7:30-9:30, free for Edelweiss Ticket holders.

**Edelweiss River/Harbor Cruise:** To benefit Milw. L/G Pride Committee, departs 10p.m. Cash bar, 2 hour cruise of harbor & river. \$20 per person, \$35 per couple. Board at Old World 3rd St. River Dock, just south of Juneau Ave.

**Ballgame:** Classic Players Reception, 8-10, Hors d'oeuvres.

**Two In Twenty:** A Lesbian soap opera comes to Milw. as a benefit for the Crew Cuts at MATA. Part one tonite 7p.m., UWM Union Cinema (2200 E. Kenwood). \$5 (negotiable).

**International Mr. Leather Contest [Chicago]:** Thru the 29th.

**Milw. Classic 10:** Registration at Marc Plaza Hotel, 5 to 11 (See Classic Section for more info).

**Jo'dee's [Racine]:** SEWAP Benefit Weekend, Sock Hop.

*contd. on page 30.*



*Brandy II, Green Bay, opened at its new location and celebrated with a Grand Opening weekend, packed with specials.*

1753 S. KK

# JET'S PLACE

672-5580

## WELCOME ALL CLASSIC PLAYERS: GOOD LUCK TO ALL!!

MAY 27

### AIDS BENEFIT SHOW

'ANYTHING GOES'

SHOW AT 10:30 PM-\$2.00 COVER  
ALL MONEY GOES TO M.A.P.

WATCH FOR THE JUNE 9, 1989

'PARADE OF STARS' SHOW

Sponsored By The Milwaukee Lesbian/Gay  
Pride Committee

BUY A DOVE  
FOR AIDS

BUY A DOVE  
FOR AIDS

cont'd. from page 35

in a committed relationship, and dating is probably off limits. Funny thing, why can't I go by myself rather than endure the less than entertaining company of some straight guy.

Cookie exchanges during the holiday season and Mary Kay parties seem to be the exclusive domain of heterosexual women. I eat cookies, and might consider make up under the proper circumstances (just kidding). Instead, we are relegated to softball games, beer tasting parties, and potlucks.

Baby showers are becoming more commonplace in the lesbian community as fertility improves with lesbian couples. While I've never actually attended such an event, I am told that lesbian baby showers often resemble those given to heterosexual women. The major difference: the jokes are different. Perhaps a turkey for the now useless baster.

This is not to down grade the quality of social opportunities in the lesbian community. I would be the first to admit that our social opportunities are outstanding. I just pose the question, Are we missing something?

Most likely, friends from work, family and total strangers have invited many of us to these types of social opportunities. But, like all aspects of our society, it would be best to share this experience with other lesbians.

Actually, we do have some opportunities that reflect the heterosexual model of entertainment. *Two in Twenty* is a lesbian soap opera that was produced in Boston, Massachusetts. Complete with commercials, this production is being showed at UWM two Fridays, May 25, and June 2, buy the women's cable production company, Crew Cuts. Recognizing the value of the lesbian experience in media, *Two in Twenty* parodies true life soap operas using lesbian themes.

Also, we have our share of books, music and a few movies that make our lives more interesting. My point, if there is one, is to show that because of our bias' or lack of opportunity, we don't participate in the

same social things that heterosexuals do. This isn't because we're not capable, but because the opportunity doesn't exist. Long live lesbian Tupperware!

• • •

Speaking of lesbian and gay pride, hats off to the Milwaukee Lesbian and Gay Pride Committee for their stunning line up of Pride activities. The ML/GPC theme, celebrating Stonewall - 20 years, is excellent, and merits discussion for those of us who were 5 years old when Stonewall happened.

The most exciting events in my opening are the advertisements in support of gay pride which will appear in *InStep* and *Wisconsin Light*. Also, the ML/GPC is planning a gay pride parade/march for the first time in years. Time to start planning to get the guts out. Thanks!



**It's Not a BIRD or a PLANE!!**

THEN WHO IS IT???

**(Keep Watching... Future Issues!)**

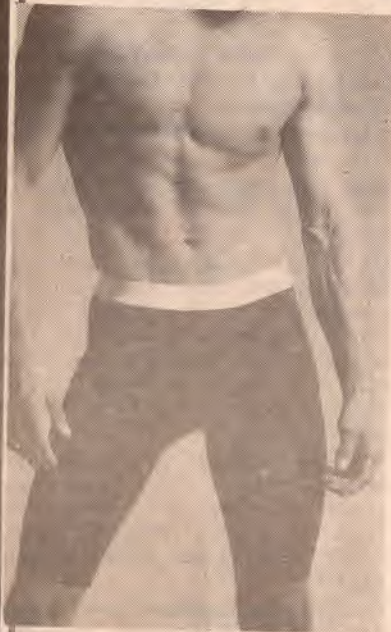
# TRIANGLE

OPEN 5 PM  
MON.-FRI.  
OPEN 2 PM  
SAT./SUN.

COCKTAIL  
HOUR  
5 TO 9  
MON.-FRI.

## 'SPANDEX CONTEST'

Thursday, June 1  
11 PM



\*\$75 Winner  
\*\$50 1st R.U.  
\*\$25 2nd R.U.

AS A BENEFIT FOR THE  
MILWAUKEE LESBIAN/GAY  
PRIDE COMMITTEE

135 East National / Milwaukee / 643-9758

# Miss M's Walkers Point CAFE

**Milwaukee's Late Night  
Hot Spot**  
1106 South 1st Street

## MILWAUKEE CLASSIC SPECIALS

### STEAK & EGGS

Rib Eye Steak (6 oz.) with  
2 Eggs, American Fries, Toast  
& Jelly, and Juice ..... **\$4.95**

### Country Breakfast

3 Eggs, 2 Bacon Strips,  
2 Sausages, with American  
Fries, Toast & Jelly, Coffee,  
Milk or Juice ..... **\$4.95**

### Cheese Burger

1/3 lb. served with Homemade  
French Fries, Cole Slaw, Lettuce,  
Tomato & Pickle, Coffee or  
Soda ..... **\$3.75**

## EXTENDED CLASSIC WEEKEND HOURS

**Friday, Saturday,  
Sunday, May 23-25  
Open 11 p.m.-Noon**

contd. from page 28

### SATURDAY, MAY 27

**Jet's Place:** AIDS Benefit Show "Anything Goes" at 10:30, Buy a Dove for AIDS. \$2 cover goes to MAP.

**Milw. Classic '89:** Play begins 8am at Mitchell & West Milw. Park. (See Classic Section for details) Opening Ceremony 1p.m. at Mitchell.

**Gay Bicycling Network:** Departs Lake Park Pavilion, noon for 32 mile trip to Grant Park. Flat terrain. All biking skills welcome. Call Bob at 963-9833.

**Alternative:** Special Classic hours, open at 10am.

**Jo'dee's [Racine]:** SEWAP Benefit Weekend, Surprise nite.

**Memorial Day Weekend Bash:** Don't Look Back Production's ML/GPC Benefit Women's Dance Party (men welcome), 8p.m.-1am, \$5 admission, Lake Park Pavilion (3133 E. Newberry Blvd.)

### SUNDAY, MAY 28

**Loose Ends:** ML/GPC Benefit Spaghetti Dinner, 4-8p.m.

**Triangle:** ML/GPC Benefit Beer Bust, 7-11p.m.

**Pivot Club [Appleton]:** Mr. & Miss Gay Fox Valley Pageant, show starts at 9:30p.m.

**6th International AIDS Candlelight Memorial:** The Milw. AIDS Project, in association with Mobilization Against AIDS, presents an interdenominational service to honor those who have died of AIDS & to support the living. St. Paul's Episcopal Church. 914 E. Knapp St., 7:30 sharp.

**Milwaukee Classic '89:** Games from 8am-on, Mitchell Park, Championship games begin 1p.m., Banquet & Awards ceremony at War Memorial Center, 5:30-on. (See Classic Section for more info.)

**Memorial Appreciation Picnic [Green Bay]:** All the bars provide the picnic, Baird's Creek Park, Noon-? Call bars for details. Beer, food, provided, Free, thanks to the bars!

**Alternative:** Special Classic hours, open 10am.

contd. on page 31

# darla's view...

by Darla Kashian

## Are We Missing Something?

This column stems from a yearning to have a recipe exchange. There are many things that we miss in life only because we're lesbians. For example, I've never been to a Tupperware party. I'm not even really sure what Tupperware is. I mean, what is it made of? Is Tupperware an endangered species?

In fact, I was recently invited to my first Tupperware party, but other engagements made attending impossible.

After looking at the Tupperware catalog, I saw many items that would be of great use to the lesbian on the go. For example, grains, dried beans and other natural foods can be stored and stacked in Tupperware containers. And everything matches. Cake carriers and casserole dishes for the weekly potlucks. But no, we

haven't the Tupperware experience.

There are other things, too. For example, my co-workers recently offered to fix me up with a guy so that the six of us, me and my date, them and their husbands, could go out for dinner. I lacked the guts to tell them that I am a lesbian. But even if they knew, would they fix me up with their sisters, friends, or in my case, moms? Doubt it.

Instead, they feel compelled to fix me up with their long lost heterosexual cousin who hasn't had a date years. In all fairness, he could be the long lost gay cousin who has been dating quite regularly without the assistance of relatives.

I refused their most generous offer, but embarrassingly, I went so far as to say that I could arrange my own date, neglecting the very important fact that I'm

contd. on page 36



"For the Best Seats  
In Town"

# Fannies

(414) 643-9633  
200 East Washington  
Milwaukee, WI 53204

Fannie's Is Now Serving Food!  
Open Friday, Saturday & Sunday at 3 PM

## WELCOME 'CLASSIC' PLAYERS

## MEMORIAL DAY WEEKEND

•DJ Friday, Saturday & Sunday

•Memorial Day Monday Cook-Out 4 PM

**And Don't Forget:**

Join Us For Our June 4th Brewer's Game.

Brewers vs. Yankees!

2 Bus Loads...Call For Details



Shadow's II staffers were kept busy during the bar's Customer Appreciation party.

contd. from page 31

**THURSDAY, JUNE 1**

**Triangle:** "Spandex" Contest, 11p.m. \$150 in prizes, ML/GPC Benefit.

**FRIDAY, JUNE 2**

**Two In Twenty:** A Lesbian soap opera, Part 2. A benefit for Crew Cuts, 7p.m., UWM Union Cinema (2200 E. Kenwood). \$5, (negotiable).

**Beer Town Badgers:** Chicago bar tour, leaves Boot Camp at 8p.m. Cost \$15.50, Club Members \$14.50.

**Jet's Place:** ML/GPC Benefit Beer Bust, 9p.m.-1am.

**SATURDAY, JUNE 3**

**Memories [La Crosse]:** Show presented by Miss Dalois, Miss Gay La Crosse & friends. Showtime 9p.m., \$2 donation at the door, proceeds & tips donated to La Crosse AIDS Project.

**Who's [Green Bay]:** Gloria P. Hole's Farewell Show as Miss Who's.

**SUNDAY, JUNE 4**

**Love, Loving And Symbiosis:** Seminar with Ted Bruce, M.S. The Counseling Center of Milwaukee, 2038 N. Bartlett Ave., 6:30-9:00p.m. \$5. 271-2565.

**MONDAY, JUNE 5**

**This Is It:** ML/GPC Fundraiser, 10p.m.-12p.m.

**FRIDAY, JUNE 9**

**Jet's Place:** "Parade of Stars" Show for ML/GPC, 10:30p.m.

**SATURDAY, JUNE 10**

**Oberons Club Nite:** Shaft 219, 10:30 till close, raffle tickets on sale at downstairs door.

**Cream City Chorus:** Car Wash, M&M Parking lot, 1-5p.m.

**Who's [Green Bay]:** Janet Planet's Farewell show as Ms. Who's.

**Pride Ride '89:** Bicycle trip, leaves War Memorial Center at Noon.

**Ballgame:** ML/GPC Pride Ride Benefit, 4-8p.m.



contd. from page 30

**Jo'dee's [Racine]:** SEWAP Benefit Weekend, Win, Lose or Draw.

**New Bar [Madison]:** Buck Night, Special Holiday "Buck Drop", over \$1,200 in cash & prizes dropped off balcony at midnight.

**Club 219:** Special Classic 219 Girls Show with special guest Kelly Lauren, Miss Gay Continental USA '89. Showtime 11:30.

**MONDAY, MAY 29 MEMORIAL DAY**

**Your Place:** Special Holiday Cookout, benefit for ML/GPC, 3 to 7p.m.

**MNDC + /MGA [Stevens Point]:** Annual Memorial Day Picnic. Iverson Park, Girl Scout Lodge, starts 12, free food, beer & fun. After picnic, Platwood Club opens at 7 until? For members & their friends.

**Fannies:** Mem. Day Cookout, 4p.m.

**Jo'dee's [Racine]:** SEWAP Benefit Weekend, Cookout.

**Gay Bicycling Network:** Departs Village Church for annual ride with Lutherans Concerned to Greenfield Park and Whitnall Park. Call Bob for more information at 963-9833.

**Pivot Club [Appleton]:** Beer Bust 5 - 9, Grand opening of Deck & Volleyball court, Cookout.

**Alternative:** Special noon opening.

**New Bar [Madison]:** Mem. Day Bash, Miller Time Party. \$1.25 for any Miller product all nite long.

**Club 219:** Annual Memorial Day Patio Cookout, 3p.m.

**TUESDAY, MAY 30**

**Club 219:** 219 Girls Benefit Show for ML/GPC, 11:30p.m.

**WEDNESDAY, MAY 31**

**Back East [Madison]:** Jock Strap Contest, cash prizes.

**In Step Deadline:** 7p.m. tonite for June 8-June 21st Issue #11, covers Milwaukee Lesbian/Gay Pride Week Activities.

**ML/GPC "Proud Crowd" Ad Deadline:** Get your name listed in ML/GPC'd Proud Crowd Ad in In Step's June 8th Issue, for a minimum \$5 donation. 32-Pride.

contd. on page 34



CORNER I-94 & HWY C  
(East Frontage Road)  
KENOSHA 857-7900

**MONDAYS**

\$5 All You Can Drink  
(Bar Rail or Tappers)

**TUESDAYS**

\$4 Beer & Soda Bust  
**WEDNESDAYS**  
Half Price All Nite!  
75¢ Rail, 50¢ Tappers  
All 50s, 60s, 70s

Music

**THURSDAYS**

\$4 Beer & Wine Bust  
**SATURDAYS**

Now Open at 3 PM  
Drink Specials

**DJ FRIDAY  
& SATURDAY**

**SUNDAYS**

\$1 Bloody Marys &  
50¢ Tappers From 3 to 7  
Various Special Events  
From 3 to 7

COMING SOON...Sat. & Sun.  
Afternoon BINGO!  
With Door Prizes!



*LaCage*

# WELCOME CLASSIC PLAYERS!

## MISS GAY MILWAUKEE PAGEANT

(PRELIMINARY FOR MISS GAY WISC.-USA)

**THURSDAY, MAY 25**

**9:30 PM**

A KING PRODUCTION

### ATTENTION CLASSIC PLAYERS...

The 6th Annual Team  
Drinking Contest  
Thur., Fri., Sat. & Sun. Night  
Trophies & Prizes to the Top  
Three Teams

801 - 805 South 2nd Street  
Milwaukee  
4383-8330

'MILWAUKEE'S GAY ENTERTAINMENT CENTER'

# JAZZ

## HOLLY & CO.



**SAT. 9:30 PM, SUN. 10:30 PM**

P L U S

**THE TWO HOTTEST DANCE  
FLOORS IN THE STATE!**

*dance dance dance*