

-  [Home](#)
-  [Events](#)
-  [Pageants](#)
-  [Karaoke](#)
-  [Specials](#)
-  [Gallery](#)
-  [Sports Teams](#)
-  [Links](#)
-  [E-mail](#)
-  [Get Directions](#)



Holiday Hours

Sunday- Christmas Eve
Dec 24- Open @ 7Pm

Monday- Christmas Day
Dec 25- Open @ 7Pm

Sunday- New Years Eve
Dec 31- Open @ 11Am

Monday- New Years Day
Jan 1- Open @ 11Am

Now Playing



NTN Trivia

RACEDAY

Texas Hold'em





Stand Up Gay Comedians

STAGE

AT THE SHELTER CLUB



open 1 hour before game time

Free Food Half Time
Fallout Drink Bust During Game



T-Shirts
Hats
Sweet Shirts
And More

The Shelter
Green Bay, WI

Check out the NEW Shelter Store

[Click here to visit our store!](#)

The Shelter's Now Serving A New Menu



[Click Here](#)



The Shelter Presents:

New Years Eve

Dec. 31st,
2006

Open 4pm-?
Free Hats/Horns
Buffet @ 1am

The Shelter
Green Bay, WI

The Shelter

  **Green Bay, WI**

730 N. Quincy Street
Green Bay, WI 54302

920-432-BOMB(2662)

OPEN Daily!

4pm - Close

\$1.75 Bottles of Rolling Rock & Pabst Everyday!

Join The Shelter E-mail list:



POLICE LINE DO NOT CROSS POLICE LINE DO NOT CROSS POLICE LINE DO NOT CROSS



Drink Responsibly.
Drive Responsibly.

-  [Home](#)
-  [Events](#)
-  [Pageants](#)
-  [Karaoke](#)
-  [Specials](#)
-  [Gallery](#)
-  [Sports Teams](#)
-  [Links](#)
-  [E-mail](#)
-  [Get Directions](#)



Holiday Hours

Sunday- Christmas Eve
Dec 24- Open @ 7Pm

Monday- Christmas Day
Dec 25- Open @ 7Pm

Sunday- New Years Eve
Dec 31- Open @ 11Am

Monday- New Years Day
Jan 1- Open @ 11Am

Now Playing



NTN Trivia

RACEDAY

Texas Hold'em





Stand Up Gay Comedians

STAGE

AT THE SHELTER CLUB



open 1 hour before game time

Free Food Half Time
Fallout Drink Bust During Game



T-Shirts
Hats
Sweet Shirts
And More

The Shelter
Green Bay, WI

Check out the NEW Shelter Store

[Click here to visit our store!](#)

The Shelter's Now Serving A New Menu



[Click Here](#)



The Shelter Presents:

New Years Eve

Dec. 31st,
2006

Open 4pm-?
Free Hats/Horns
Buffet @ 1am

The Shelter

The Shelter

  **Green Bay, WI**

730 N. Quincy Street
Green Bay, WI 54302

920-432-BOMB(2662)

OPEN Daily!

4pm - Close

\$1.75 Bottles of Rolling Rock & Pabst Everyday!

Join The Shelter E-mail list:



POLICE LINE DO NOT CROSS POLICE LINE DO NOT CROSS POLICE LINE DO NOT CROSS



Drink Responsibly.
Drive Responsibly.

-  [Home](#)
-  [Events](#)
-  [Pageants](#)
-  [Karaoke](#)
-  [Specials](#)
-  [Gallery](#)
-  [Sports Teams](#)
-  [Links](#)
-  [E-mail](#)
-  [Get Directions](#)

NTN Trivia

Now Playing  **RACEDAY**

Texas Hold'em 

Up Coming Events

SHELTER SHOWDOWN

IT'S A DOG EAT DOG SHOW!



SHOWCASE YOUR TALENT!

THURSDAYS @ MIDNIGHT

ENTER & WIN \$25 CASH

DJ CARL

TC HAMMOND

HOSTED BY

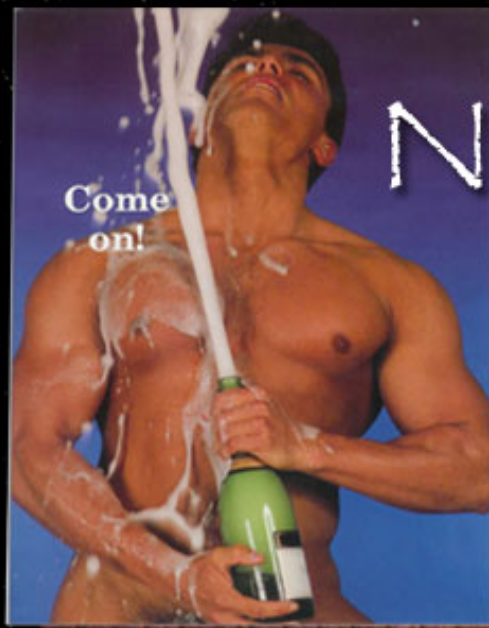
\$1.50 CAPTAIN & COKES and \$2 DOMESTIC BOTTLES

The Shelter

 Green Bay, WI

730 N. Quincy St., Green Bay WI 54302

www.TheShelterClub.com * (920)432-BOMB(2662)



The Shelter Presents:

New Years Eve

Dec. 31st,
2006

Open 11am-?
Free Hats/Horns
Buffet @ 1am

The Shelter
Green Bay, WI

The Shelter Club's White Party!!



www.TheShelterClub.com

3

SNOWBALL

Saturday, Jan. 13th

The Shelter
Green Bay, WI

\$2 Domestic Bottles
\$2 Shots

730 N. Quincy St., Green Bay, WI * (920)432-BOMB(2662)

Mr & Miss Shelter Pageant 2007

2pm-2:30pm Registration
3pm Interview
10:30 Pageant Time
\$100 Entry Fee
\$1000 Prize Package

Steven Lloyd
Mr. Shelter 2006

Chantel
Miss Shelter 2006

January, 20th 2007

The Shelter

Green Bay, WI

www.TheShelterClub.com

730 N. Quincy St., Green Bay, WI * (920)432-BOMB(2662)



Sunday
Jan. 21th, 2007

Omelet Bar
Salad Bar
Breakfast Bar
Lunch Bar

\$11.50
(juice & coffee)

Dessert/Fruit Bar

Over 30 Total Items

(11am-2pm)

Sunday Brunch



730 N. Quincy St., Green Bay WI 54302
www.TheShelterClub.com * (920)432-BOMB(2662)

\$11.95
(per person- includes complimentary juice)



www.TheShelterClub.com

All 80's All Night

10pm Event Time

SO 80'S

kicking up a decade of hits!



The Last Saturday of Every Month Is Now 80's Night!!

Saturday, Jan. 27th

The Shelter
Green Bay, WI

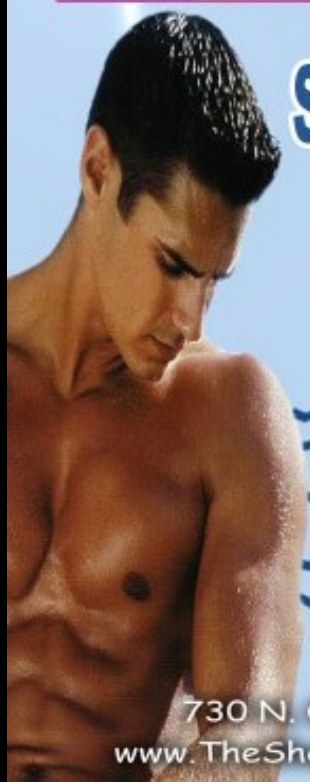
730 N. Quincy St., Green Bay, WI * (920)432-BOMB(2662)

\$2 Domestic Bottles

\$2 Shots

SHELTER SHOWDOWN

IT'S A DOG EAT DOG SHOW!



SHOWCASE YOUR TALENT!

THURSDAYS @ MIDNIGHT

ENTER & WIN \$25 CASH

DJ CARL

TC HAMMOND

HOSTED
BY

\$1.50 CAPTAIN & COKES and \$2 DOMESTIC BOTTLES

The Shelter
Green Bay, WI

730 N. Quincy St., Green Bay WI 54302

www.TheShelterClub.com * (920)432-BOMB(2662)

Dec. 21, 2006

You Are Invited
To Our Annual **Holiday
Celebration**



Pic w/
Santa Claus



Thursday 9pm-11pm

FREE TAP BEER AND COMPLIMENTARY HORS D'OEUVRES

Please bring an unwrapped boy's or girl's gift, or a gift certificate, to be shared with those less fortunate. This year's gifts will be distributed to families affected by HIV.

The Shelter
Green Bay, WI

The Shelter, 730 N. Quincy St. Green Bay, WI 54302
www.TheShelterClub.com * 920-432-BOMB(2662)

The Shelter Club's White Party!!

10pm Event Time



www.TheShelterClub.com

SNOWBALL

Saturday, Jan. 13th

The Shelter
Green Bay, WI

730 N. Quincy St., Green Bay, WI * (920)432-BOMB(2662)

\$2 Domestic Bottles

\$2 Shots

Mr & Miss Shelter Pageant 2007

2pm-2:30pm Registration

3pm Interview

10:30 Pageant Time

\$100 Entry Fee

\$1000 Prize Package

Steven Lloyd
Mr. Shelter 2006

Chantel
Miss Shelter 2006

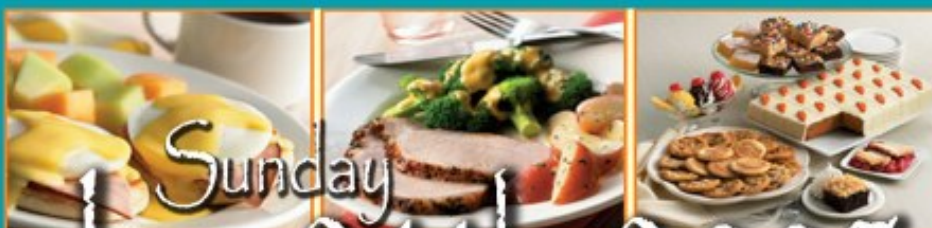
January, 20th 2007

The Shelter

Green Bay, WI

www.TheShelterClub.com

730 N. Quincy St., Green Bay, WI * (920)432-BOMB(2662)



Sunday

Jan. 21th, 2007

Omelet Bar

Salad Bar

Breakfast Bar

Lunch Bar

Dessert/Fruit Bar

Over 30 Total Items

\$11.50

(per person- includes complimentary juice & coffee)



(11am-2pm)

Sunday Brunch



730 N. Quincy St., Green Bay WI 54302

www.TheShelterClub.com * (920)432-BOMB(2662)

www.TheShelterClub.com

All 80's All Night

10pm Event Time

SO 80'S

kicking up a decade of hits!



The Last Saturday of Every Month Is Now 80's Night!!

Saturday, Jan. 27th

The Shelter
Green Bay, WI

730 N. Quincy St., Green Bay, WI * (920)432-BOMB₍₂₆₆₂₎

\$2 Domestic Bottles

\$2 Shots

-  [Home](#)
-  [Events](#)
-  [Pageants](#)
-  [Karaoke](#)
-  [Specials](#)
-  [Gallery](#)
-  [Sports Teams](#)
-  [Links](#)
-  [E-mail](#)
-  [Get Directions](#)





Mr & Miss Shelter Pageant



2007

2pm-2:30pm Registration

3pm Interview

10:30 Pageant Time

\$100 Entry Fee

\$1000 Prize Package



Steven Lloyd
Mr. Shelter 2006



Chantel
Miss Shelter 2006

January, 20th 2007

The Shelter

 Green Bay, WI

www.TheShelterClub.com 730 N. Quincy St., Green Bay, WI * (920)432-BOMB(2662)



-  [Home](#)
-  [Events](#)
-  [Pageants](#)
-  [Karaoke](#)
-  [Specials](#)
-  [Gallery](#)
-  [Sports Teams](#)
-  [Links](#)
-  [E-mail](#)
-  [Get Directions](#)

Now Playing

buzztime
»PLAY ALONG TV»

NTN Trivia

RACEDAY

Texas Hold'em



SHELTER SHOWDOWN

IT'S A DOG EAT DOG SHOW!



SHOWCASE YOUR TALENT!

THURSDAYS @ MIDNIGHT

ENTER & WIN \$25 CASH

DJ CARL

TC HAMMOND

HOSTED BY

\$1.50 CAPTAIN & COKES and \$2 DOMESTIC BOTTLES

The Shelter
Green Bay, WI

730 N. Quincy St., Green Bay WI 54302

www.TheShelterClub.com * (920)432-BOMB(2662)

-  [Home](#)
-  [Events](#)
-  [Pageants](#)
-  [Karaoke](#)
-  [Specials](#)
-  [Gallery](#)
-  [Sports Teams](#)
-  [Links](#)
-  [E-mail](#)
-  [Get Directions](#)

Specials

All Drinks \$6.00



Ask your bartender for *daily* drink specials

Martinis

Apple Martini

Absolut Vodka, DeKuyper Apple Pucker, with Sugar around rim

Colada Martini

Malibu, Pineapple Rum, and Pineapple Juice

Watermelon Martini

Absolut Vodka, DeKuyper Watermelon Pucker Triple Sec, Bacardi Watermelon and Cranberry Juice

Berrylicious Martini

Stoli Blueberi, Stoli Strasberi, Bacardi Razz and Cranberry Juice

Dirty Martini

Absolut Vodka or Tanqueray Gin with Olive Juice

Classic Martini

Absolut Vodka, and a hint of vermouth

Chocolate Martini

3 Olive Chocolate, Godiva and Dr. McGillicuddy's Vanilla

Chocolate Mint Martini

Stoli Vanilla, Godiva and Dr. McGillicuddy's

Shelter Cosmopolitan

Absolut Kurant, Triple Sec, Lime Juice and Cranberry Juice

Traditional Cosmopolitan

Absolut Citron, Triple Sec, Lime Juice and Cranberry Juice

Tie Me To The Bedpost

Absolut Citron, Midori, Malibu, Sweet and Sour



Offers You This Fine Drink Selection

-  [Home](#)
-  [Events](#)
-  [Pageants](#)
-  [Karaoke](#)
-  [Specials](#)
-  [Gallery](#)
-  [Sports Teams](#)
-  [Links](#)
-  [E-mail](#)
-  [Get Directions](#)

A RadioActive Production



furnaboot 2006

[Click Here](#)
For Photos & Videos

[Click Here](#)
For More



The Shelter presents
Halloween Bash 2006
Pictures



[Click Here](#)
For More



The Shelter presents
Mr. & Miss Shelter
2006 Pageant Pictures

GALLERIES

[Click Here](#)
For More



The Shelter presents
New Years 2006
Pictures

Shelter Team Sports

Darts

Softball



Home



Events



Pageants



Karaoke



Specials



Gallery



Sports Teams



Links



E-mail



**Get
Directions**

-  [Home](#)
-  [Events](#)
-  [Pageants](#)
-  [Karaoke](#)
-  [Specials](#)
-  [Gallery](#)
-  [Sports Teams](#)
-  [Links](#)
-  [E-mail](#)
-  [Get Directions](#)



Host Hotel

Ask For the Shelter Club Rate (\$55.00)



The Shelter  **Newsletter**
Green Bay, WI





-  [Home](#)
-  [Events](#)
-  [Pageants](#)
-  [Karaoke](#)
-  [Specials](#)
-  [Gallery](#)
-  [Sports Teams](#)
-  [Links](#)
-  [E-mail](#)
-  [Get Directions](#)

The Shelter

730 N. Quincy Street
Green Bay, WI 54302
920-432-BOMB(2662)

Fax:920-432-0611

Email: Info@TheShelterClub.com

First Name:

Last Name:

Email:

Address Line 1:

Address Line 2:

City:

State:

Zip:

Phone Number:

Add me to your mailing list

Comments:



Home



Events



Pageants



Karaoke



Specials



Gallery



Sports Teams



Links



E-mail



Get Directions

Get Directions

Now Playing

buzztime
» PLAY ALONG TV

NTN Trivia

RACEDAY

Texas Hold'em



FROM:

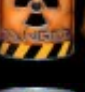

Address or Intersection:

City:

State:

ZIP Code:

Country:

 [Home](#) [Events](#) [Pageants](#) [Karaoke](#) [Specials](#) [Gallery](#) [Sports Teams](#) [Links](#) [E-mail](#) [Get Directions](#)

Shelter Dart Teams

As Of Nov. 2nd, 2006

Shelter 1 (East)

Player	Total Games Played	Wins	League Placement	7-8-9-H
Dale J.	56	12	47	0-0-1-0
Brandon S.	28	3	93	1-0-0-1
Jermey	12	2	109	0-0-0-0
Kari	38	1	129	2-1-0-0
Carl (Sub)	6	1	113	0-0-0-0
Marty (Sub)	12	2	110	1-0-0-0
Todd (Sub)	42	4	86	2-0-0-0
Nicole (Sub)	6	0	136	0-0-0-0

Shelter 2 (East)

Player	Total Games Played	Wins	League Placement	7-8-9-H
Marcas	48	20	13	0-1-0-3
Scott	48	23	5	0-0-0-1
Greg	48	15	28	0-0-0-2
Nicole B (Sub)	18	5	75	0-1-0-0
Justin	44	3	97	0-0-0-0

Shelter 3 (East)

Player	Total Games Played	Wins	League Placement	7-8-9-H
Jemal	28	3	94	0-0-0-0
Dale J (Sub)	56	12	47	0-0-1-0
Brain	14	1	125	0-0-0-0

Shelter 4 (West)

Player	Total Games Played	Wins	League Placement	7-8-9-H
Tony (MGO)	46	16	23	0-0-0-4
Kelli Jo	44	7	64	1-0-0-0
Heith	52	22	9	2-0-1-3
Dee Dee (Sub)	24	5	78	0-0-0-0
Tammy Faye (Sub)	12	3	90	0-0-0-0
Malissa (Sub)	6	0	135	0-0-0-0

Shelter 5 (West)

Player	Total Games Played	Wins	League Placement	7-8-9-H
Adam	50	18	18	4-0-0-1
Scott M	42	20	11	0-1-0-1
Alex	50	27	3	6-0-1-1
Butta	50	10	57	1-0-0-0

Shelter 6 (West)

Player	Total Games Played	Wins	League Placement	7-8-9-H
Ben	44	16	22	0-0-0-1
Jason	43	15	27	2-0-0-1
Richard	8	0	143	0-0-0-0

Shelter Softball Team



Player	Position	Number	
Dale J.	Catcher	3	
Todd C.	Pitcher	74	
Scott G.	Short Stop	8.5	
John J.	3rd Base	4	
Marcus	RF	33	
Greg K.	CF	7	
Kelli Jo	2nd Base	10	
Dee Dee	LF	13	
Jeremy	1st Base	21	

-  [Home](#)
-  [Events](#)
-  [Pageants](#)
-  [Karaoke](#)
-  [Specials](#)
-  [Gallery](#)
-  [Sports Teams](#)
-  [Links](#)
-  [E-mail](#)
-  [Get Directions](#)



Shelter Club

Dale J.

#4

Manager/Catcher



Shelter Club

Todd C.
#74
Pitcher



Shelter Club

Dee Dee
#13
Left Field



Shelter Club

Greg k.
#7
Right Field



Shelter Club

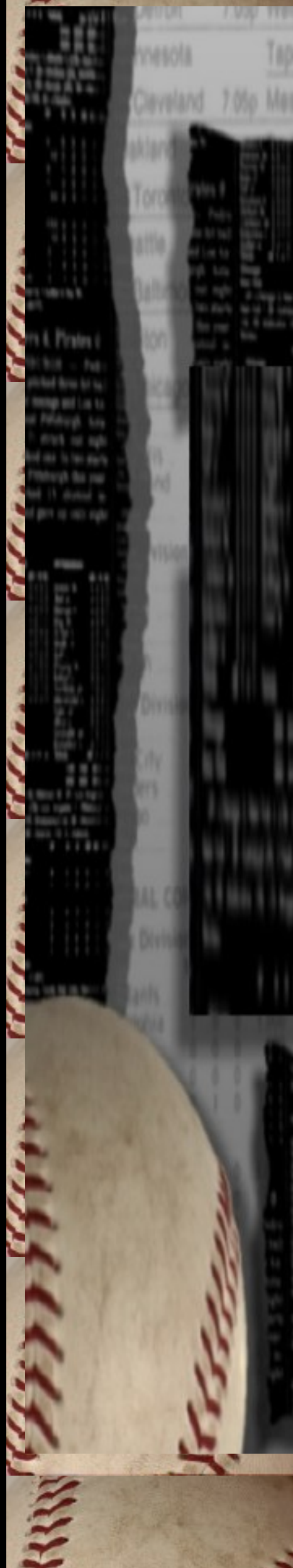
Jeremy
#21
1st Base

Minnesota	Tapani (r)	7-14	5.08	0-1	120	525	0-2	210	3.88
Cleveland	70sp Mess (r)	9-10	4.47	0-0	70	257	0-1	182	6.27



Shelter Club

John J.
#3
3rd Base





Shelter Club

Kelli Jo
#10
2nd Base



Shelter Club

Marcus
#33
Center Field

Minnesota	Tapani (r)	7-14	5-08	0-1	12-0	5-25	0-2	21-0	3-88
Cleveland	70sp Mess (r)	9-10	4-47	0-0	7-0	2-57	0-1	18-2	8-27



Shelter Club

Scott
#8.5
Short Stop



Shelter Club

Bill/Brandon
#2/#1
Cheerleaders

Turnabout 2006



Home



Events



Pageants



Karaoke



Specials



Gallery



Sports Teams



Links



E-mail



**Get
Directions**









Anita Buffet "Steven Lloyd" Video

Alexis Longwood "DJ Alex" Video



Cirque Du SoGay

Photos By Steven S.

 [Home](#)

 [Events](#)

 [Pageants](#)


 [Karaoke](#)

 [Specials](#)

 [Gallery](#)

 [Sports Teams](#)

 [Links](#)

 [E-mail](#)

 [Get Directions](#)



Mr. & Miss Shelter 2006



Home



Events



Pageants



Karaoke



Specials



Gallery



Sports Teams



Links



E-mail



**Get
Directions**

Winners

Miss Shelter 2006 -Chantel & Mr. Shelter 2006 -Steven Llyod









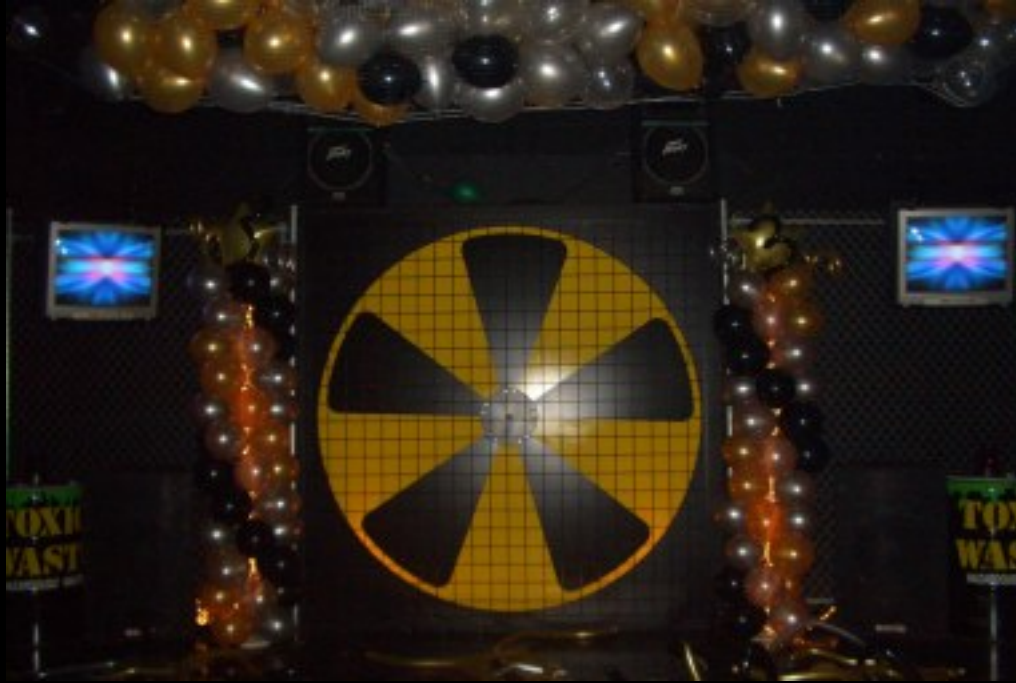
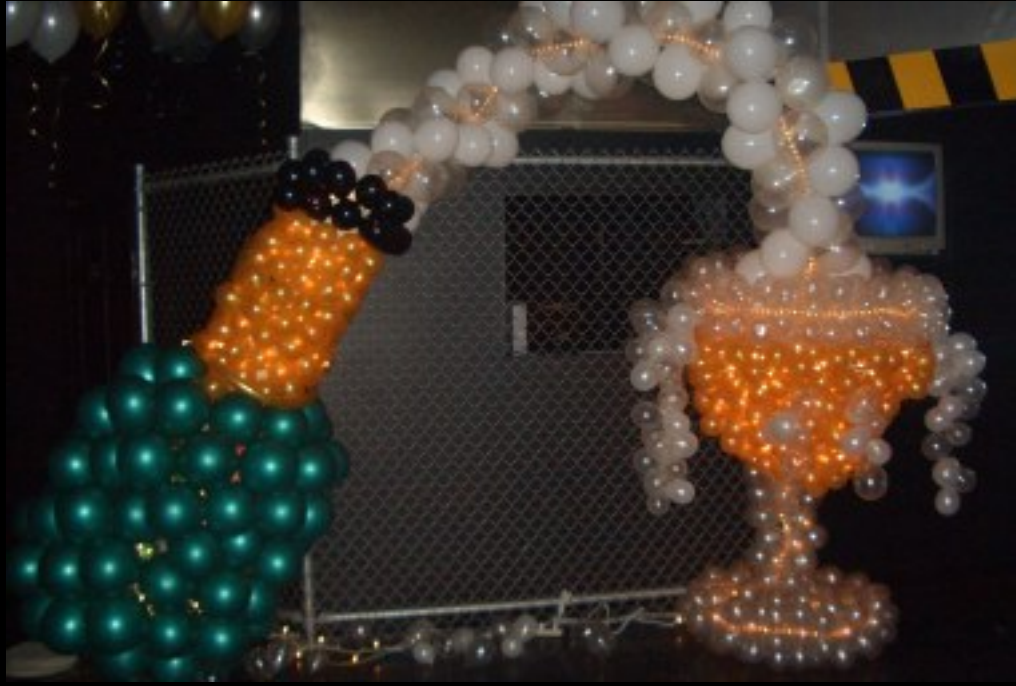






New Years 2006

-  [Home](#)
-  [Events](#)
-  [Pageants](#)
-  [Karaoke](#)
-  [Specials](#)
-  [Gallery](#)
-  [Sports Teams](#)
-  [Links](#)
-  [E-mail](#)
-  [Get Directions](#)









Winners



Anita Shelter
Miss Shelter 2005

Emeritus



Congratulations!!

Chantel
Miss Shelter 2006

&

Steven Lloyd
Mr. Shelter 2006

Mr. & Miss Shelter Rules



Home



Events



Pageants



Karaoke



Specials



Gallery



Links



E-mail



**Get
Directions**

Mr. & Miss Shelter

Rules

Categories

Prize Package

Mr. & Miss Shelter 2007

Contestants must be males at least 21 years of age and able to show proof of age. This Pageant is open to any US resident.

Judging will be on a total point accumulation system. The contestant with the highest talent score will break any ties.

Contestants will be judged in the following categories:

Miss Shelter

Personal Interview	(15 points possible per judge)	1pt <i>Increments</i>
Presentation	(20 points possible per judge)	2pt <i>Increments</i>
Talent	(30 points possible per judge)	3pt <i>Increments</i>
Gown	(20 points possible per judge)	2pt <i>Increments</i>
Onstage Question	(15 points possible per judge)	1pt <i>Increments</i>

Mr. Shelter

Personal Interview	(15 points possible per judge)	1pt <i>Increments</i>
Club wear	(20 points possible per judge)	2pt <i>Increments</i>
Talent	(30 points possible per judge)	3pt <i>Increments</i>
Swimwear	(20 points possible per judge)	2pt <i>Increments</i>
Onstage Question	(15 points possible per judge)	1pt <i>Increments</i>

Talent presentation will be limited to Seven (7) minutes. You may use large and small props during this competition, allowed. Talents over Seven (7) minutes will have administrative points deducted. Five (5) minute set up time will be given for props.

Any type of talent presentation is acceptable, except those that may cause injury to the audience or any other person. Music MUST be turned in on CD at the time of registration. You should have your talent number recorded as Track 1 of your CD and your crowning number on Track 2 of the same CD. Do not use commercial CD's or have any other music on these CD's.

The use of, or dispensing of illegal drugs or marijuana will not be tolerated while a contestant is participating in the Mr. & Miss Shelter Pageant. Immediate disqualification will result for those that break this rule.

Any contestant that is not in the appointed place at the appointed time will lose administrative points.

Any contestant, contestant's dancer, helper, etc. who is caught in the act of stealing or tampering with another person's possessions will be immediately disqualified and removed from the location of the contest.

The Shelter Club reserves the right to make any decision concerning any matter not covered by these rules and regulations.

Mr. & Miss Shelter will be required to sign a contract with RadioActive Productions before ANY prize money is paid. Failure to sign the contract will mean the forfeiture of the title.

A copy of the contract is in the current Contestant Handbook distributed before the Pageant.

Any contestant in the Top 3 NOT staying on stage for the entire crowning and picture taking will forfeit their placement and prize money.

Within 7 days of winning the Pageant, Mr. & Miss Shelter must have and maintain an email address and cell phone or contact number for the entire length of their reign.

No excessive glitter, fire, water, unwrapped straw (hay), or live animals may be used in any category in this competition.

Mr. & Miss Shelter categories



Home



Events



Pageants



Karaoke



Specials



Gallery



Links



E-mail



**Get
Directions**

Mr. & Miss Shelter

Rules

Categories

Prize Package

Mr. & Miss Shelter 2007

Interview

Mr. & Miss Contestants

15 pts.

The Judges Panel will interview each contestant individually. The purpose of interview is to allow the judges some insight into the character of each contestant. During the interview the judges are afforded the opportunity to evaluate each contestant's basic qualities, such as intelligence, ability to communicate, attitude, etc. Interview is intended to be relaxed and professional. Suggested attire is casual daywear to professional business attire, although the contestant should wear what they feel comfortable wearing. Interview for each contestant will be no longer than 7 minutes.

Presentation (Shelter Wear)

Miss Contestants

20 pts.

During this category, contestants will be introduced to the audience and judges in their "Shelter Wear". Contestants may choose a costume/outfit of any style representing The Shelter Club. Focus on Creativity, fit, hair, makeup, the bars theme, etc.

Club wear

Mr. Contestants

20 pts.

Club Wear is defined as an outfit that is worn to clubs in the United States. The judges are looking for style, fit, and presentation. The use of props in this category is not allowed. Each contestant will model individually for the judges, and then be brought back for comparative competition. This category is your chance to show personal style and individuality. NO Beads or Rhinestones will be allowed on your club wear. Focus on masculinity.

Talent

Mr. & Miss Contestants

30 pts.

Talent can be any type of presentation, as long as it doesn't create danger to the contestant or any other person. Talent will be limited to seven (7) minutes. Prop setup and teardown will be limited to five (5) minutes total. Talents over seven (7) minutes will have points deducted. There are no restrictions to the number of people involved in the talent. Music must be marked on track 1 of a CD, with the contestants name clearly marked. Please always bring a back-up copy. All talent music is to be turned in at registration. Props are allowed in this category. Any type of talent presentation is acceptable except those that cause injury to the audience or any other person. No fire, water, excessive glitter or live animals may be used in any talent presentation.

Swimwear

Mr. Contestants

20 pts.

Swimwear is not a bodybuilding contest. The judges will be looking for overall confidence and poise. Contestants swimwear in the category must be Board Shorts. No briefs, square cuts, box cuts, Bermuda shorts, string

bikinis, speedos, or thongs. Each contestant will compete individually in front of the judges, and then be brought back in a group for comparative judging. Back-up persons will not be allowed on stage during this category. Contestants' board shorts can be of any color.

Comparative/Competitive Evening Gown

Miss Contestants

20pts.

This category will be a little different from what many of the queens are used to. The Shelter Club has chosen "Comparative/Competitive" Evening Gown for our Evening Gown category. Contestants Evening Gowns must be basic fabric gowns. You are not allowed to have beading, sequins, rhinestones, glitter, or jewels of any kind on your gown. Jewelry accessories such as rings, chokers, earrings, necklaces, etc. are allowed to be worn with your gown, but your gown must be a basic fabric. Focus on creativity, hair, make-up, and your modeling. You may choose one solid color gown, or have multi-color fabric gown, such as animal print or rainbow, etc. But your gown cannot have beading, sequins, rhinestones, glitter, jewels, mirrors, etc. of any kind. Contestants will be called out individually to model their gown, and then will be brought back on stage for the "Comparative/Competitive" portion of this category. Each contest will be able to free model their fabric gown with all contestants on stage. You may choose to stand in one place, or walk in front of another contestant, but you cannot touch the other contestant or step on their gown. We want to see how competitive you can be during comparative judging.

On Stage Question

Mr. & Miss Contestants

15pts.

At the time of registration, contestants will write down a question. This question will then be used during our "On Stage Question" portion of the contest. Contestants will randomly pick a question from a hat, be asked that question, and then will have one minute to answer the question. The question that each contestant writes down at the time of registration cannot be political, religious, or controversial. The question that each contestant writes down must be a general question that either a male or female contestant could answer. If a contestant picks his or her own question during the "On Stage Question" portion of the contest, he or she will then have to pick another question.

Mr. & Miss Shelter Prize Package



Home



Events



Pageants



Karaoke



Specials



Gallery



Links



E-mail



**Get
Directions**

Mr. & Miss Shelter

Rules

Categories

Prize Package

PRIZES AND AWARDS

**** Mr. Shelter 2007 will receive:**

\$100.00 - Cash (Paid the night you win).
Award Medallion, Sash, and Trophy (\$150.00)
Bar Tab (\$50.00)
Three (3) Paid booking at The Shelter Club BOMB Show (\$300.00)
\$100.00 -- Cash (Paid the night you give up title).

*** Mr. Shelter 2007 (1st Runner-Up) will receive:**

\$50.00 - Cash (Paid the night you win).
Award Medallion

**** Miss Shelter 2007 will receive:**

\$100.00 - Cash (Paid the night you win).
Crown (\$300.00)
Award, Sash, Trophy and Flowers (\$200.00)
Three (3) Paid booking at The Shelter Club BOMB Show (\$300.00)
\$100.00 -- Cash (Paid the night you give up title).

*** Miss Shelter 2007 (1st Runner-Up) will receive:**

\$50.00 - Cash (Paid the night you win).
Award and Flowers

New Years Eve

 [Home](#)

 [Events](#)

 [Pageants](#)

 [Karaoke](#)

 [Specials](#)

 [Gallery](#)

 [Sports Teams](#)

 [Links](#)

 [E-mail](#)

 [Get Directions](#)



The Shelter Presents:

New Years Eve

Dec. 31st,
2006

Open 4pm-?
Free Hats/Horns
Buffet @ 1am

The Shelter
 Green Bay, WI

730 N. Quincy St., Green Bay WI 54302
www.TheShelterClub.com * (920)432-BOMB(2662)

 [Home](#)

 [Events](#)

 [Pageants](#)

 [Karaoke](#)

 [Specials](#)

 [Gallery](#)

 [Sports Teams](#)

 [Links](#)

 [E-mail](#)

 [Get Directions](#)

Coming In 2007



Stand Up Gay Comedians
STAGE
AT THE SHELTER CLUB

The Last Friday of Every Month

-  Home
-  Events
-  Pageants
-  Karaoke
-  Specials
-  Gallery
-  Sports Teams
-  Links
-  E-mail
-  Get Directions

The Shelter
Appetizers

- Cream Cheese Stuffed Jalapenos Poppers.....\$3.75
- Battered Old-Fashioned Mushrooms.....\$3.25
- Battered Onion Rings.....\$2.75
- Breaded Mozzarella Cheese Sticks.....\$3.25
- Breaded White Cheddar Nuggets.....\$3.25
- Garlic Bread.....SM(4).....\$2.50.....LG(6).....\$4.25
-  Garlic Cheese Bread.....(SM).....\$3.25.....(LG).....\$4.75
- French Fries.....\$2.25
- Waffle Fries.....\$2.75
-  Potato Triangles(6).....\$2.25
- Buffalo Wings (12).....\$5.75
- Chicken Tenderloin Strips.....\$5.25.....w/fries.....\$6.25
- Popcorn Chicken...w/fries.....\$5.25
-  Mini Corn Dogs.....w/fries.....\$4.25
- Potato Skins.....SM(4).....\$4.25.....LG(6).....\$5.75
-  Chips & Sasha.....\$2.50
Tortilla Chips served w/ Salsa or Shelter Gourmet Cheese Dip



The Shelter
Wraps

Served with Coleslaw, Chips and Pickle
Add Fries for \$1.00 more



-  **Chicken Caesar Wrap**.....\$6.50
Chicken, swiss cheese, Parmesan, lettuce with caesar dressing.
-  **BBQ Tender Wrap**.....\$6.50
Chicken Tenders, Sweet Baby Rays BBQ, swiss cheese and lettuce.
- Steak Wrap**.....\$6.50
Steak, mushroom, green pepper, onion, lettuce and swiss cheese with ranch dressing.
- Buffalo Chicken Wrap**.....\$6.50
Breaded chicken, The Shelter's famous hot sauce, swiss cheese and lettuce with ranch dressing.
-  **Italian Wrap**.....\$6.50
Grilled chicken, pepperoni, lettuce, swiss, provolone, mozzarella, and parmesan cheese with italian dressing.
- Chicken Bacon Wrap**.....\$6.50
Grilled chicken, bacon, Swiss cheese and lettuce with ranch dressing.

Add Ons:

- Swiss Cheese.....\$0.25
- American Cheese.....\$0.25
- Mushrooms.....\$0.25
- Onions.....\$0.25
- Jalapeno.....\$0.50

The Shelter
Burgers

All Baskets are served with lettuce, pickels, coleslaw and fries.

- Hamburger.....\$2.75.....Basket.....\$4.25
- Cheese Burger.....\$3.25.....Basket.....\$4.75
- Double Cheese Burger.....\$4.50.....Basket.....\$6.50
- Bacon Cheese Burger.....\$3.75.....Basket.....\$5.75
- Mushroom & Swiss Burger.....\$3.75.....Basket.....\$5.75
- Veggie Burger.....\$3.75.....Basket.....\$5.75
-  **Southwest Jalapeno Burger**.....\$4.75.....Basket.....\$6.75
Melted Jack cheese topped with jalapeños, and spicy southwestern mayonnaise.
-  **BOMB Burger**.....\$4.75.....Basket.....\$6.75
10oz Burger, 2 Slices of melted American cheese topped with red onion, tomato, lettuce and pickles.

The Shelter
Sandwiches

- Grilled Chicken...w/lettuce & mayo.....\$2.75.....Basket...\$4.75

Breaded Chicken...w/lettuce & mayo...\$3.75.....Basket...\$5.75
Chicken Cordon Bleu.....\$4.25.....Basket...\$6.25
Breaded chicken breast, topped with ham and melted swiss cheese.

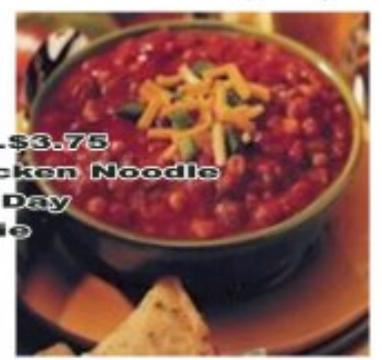
Chicken Parmesan.....\$4.25.....Basket...\$6.25
Breaded chicken breast, topped with marinara sause and melted mozzarella cheese.

Country Fried Steak...w/ swiss cheese....\$4.75...Basket...\$6.75
Veal Parmesan.....\$4.25.....Basket...\$6.25
Breaded veal, topped with marinara sause and melted mozzarella cheese.

Cod Sandwich.....\$3.75.....Basket...\$5.75
Steak Sandwich.....w/chips...\$6.75.....Basket...\$7.75
Add Mushrooms, Onions, or Cheese for \$0.25 each



The Shelter **SOUP** **NEW** Chili served everyday!



Cup.....\$2.50.....Bowl.....\$3.75
Saturday, Sunday & Monday.....Chicken Noodle
Tuesday.....Soup of the Day
Wednesday.....Chicken Pot Pie
Thursday.....Chicken Tortilla
Friday.....Chicken & Wild Rice

Add a cup of soup to any basket for \$1.00

Thursday's Only

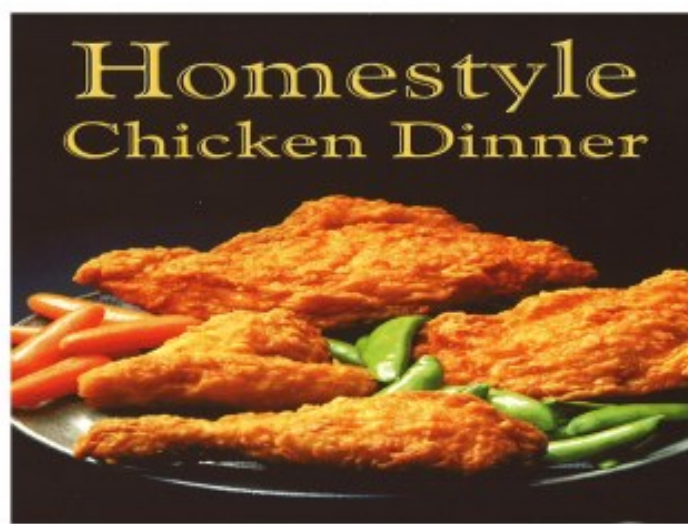


10oz Marinated Ranchero Steak Dinner

Served with choose of Fries, Mashed or Hashbrowns, and Vegetable



\$6.75



Homestyle Chicken Dinner

4 Piece Chicken Dinner

Served with Coleslaw & Choose of Fries, Mashed or Hasbrowns

\$6.75



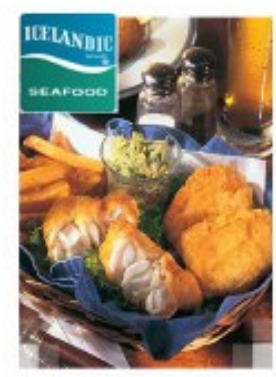
riverside foods

21 Piece Shrimp Basket

Served with Coleslaw & Fries



\$6.75



3 Piece Cod Dinner

Served with Coleslaw & Fries

\$6.75

5 Piece Perch Basket.....\$7.50

Served with Coleslaw & Fries

The Shelter
PIZZA

Cheese	9" ...\$4.25.....	12" ...\$6.25
Sausage	9" ...\$4.75.....	12" ...\$6.75
Pepperoni	9" ...\$4.75.....	12" ...\$6.75
Sausage & Mush ...	9" ...\$5.25.....	12" ...\$7.50
Pepperoni & Mush ..	9" ...\$5.25.....	12" ...\$7.50
Sausage & Pepperoni ..	9" ...\$5.25.....	12" ...\$7.50

Shelter Deluxe.....**9"**...\$6.25.....**12"**...\$8.25
Sausage, pepperoni, mushroom, onion & green pepper.


Chicken Supreme.....**9"**...\$6.75.....**12"**...\$8.75
Marinated grilled chicken breast, mushroom, onion, green pepper and Italian seasonings.

4 Meat Lovers.....**9"**...\$6.75.....**12"**...\$8.75
Sausage, pepperoni, ground beef and Canadian bacon.

 **BBQ Chicken**.....**9"**...\$6.25.....**12"**...\$8.25
Grilled chicken breast, Sweet Baby Ray's BBQ and Italian seasonings.

The Bomb.....**9"**...\$7.50.....**12"**...\$9.50
Sausage, pepperoni, bacon, ground beef, canadian bacon mushroom, onion, green pepper and black olive.

Veggie.....**9"**...\$5.50.....**12"**...\$7.50
Mushroom, onion, green pepper, green olive and black olive.

 **Steak Supreme**.....**9"**...\$6.75.....**12"**...\$8.75
Seasoned grilled Steak, mushroom, onion, and green pepper.



Add toppings:

Sausage, pepperoni, bacon, ground beef, canadian bacon, mushroom, onion, pineapple, Jalapeno peppers, green pepper and black or green olives.

Price per topping: 9"- \$.50 12"- \$.75

Wednesday Nights

Buy One 12" Pizza Get A Single Topping 12" Free
Dine In Only- \$.50 For To Go Orders

All our pizzas are made with 100%

GRANDE

Fine Italian Cheeses

The Shelter

Combination Platters


	Wisconsin Veggie	\$6.25
	<i>Cheddar Nuggets, Mozzarella Sticks, Cheesy Broccoli, Onion Rings, Cheesy Cauliflower, & Mushrooms.</i>	
	Bourbon Street	\$6.50
	<i>Lemon Cream Cheese Jalapenos, Potato Wedges, Mushrooms, Buffalo Wings, & Onion Rings</i>	
	Brew House	\$6.75
	<i>Shrimp, Chicken Strips, Cream Cheese Jalapenos, Mushrooms, Mozzarella Sticks & Onion Rings</i>	

The Shelter

Daily Specials

 **Buffalo Chicken Wrap**.....\$5.50
Breaded Chicken, The Shelter's Famous Hot Sauce, Swiss Cheese and Lettuce.

 **Cheese Burger Basket**.....\$3.75
1/3 Pound Burger, Served with Fries, Coleslaw and Pickles.

 **Shrimp Basket**.....\$5.75

Wednesday

21 piece Breaded Shrimp, Served with Fries, Coleslaw and Cocktail Sauce.



Thursday

Steak Sandwich.....\$5.75

6oz Tenderloin, Served with Chips, Coleslaw and Pickle.



Friday

Perch Basket.....\$6.50

5pcs of Perch, Served with Fries, Coleslaw and Tarter Sauce



Saturday

Chicken Parmesan.....\$5.25

Breaded Chicken Breast, Topped w/ Marinara, Mozzarella, with Fries & Coleslaw.



Sunday

Chicken Tenders Basket.....\$5.25

4pc Chicken Tenderloin Strips, Served with Fries.