

MAPFEST



A Festival & Concert To Benefit AIDS

Sunday, September 4, 1994
Milwaukee's Performing Arts Center

IN **CONCERT**



SUEDE

SUEDE

THE FLIRTATIONS

7:30 p.m.
**Performing Arts
Center Vogel Hall**

Tickets \$15



THE FLIRTATIONS

See the center spread for more information...



***Congratulations MAP
on MAPFEST '94!***



**THIS
IS IT!**

**418 East Wells Street
Milwaukee
278-9192**

Milwaukee's Friendliest Bar!



WELCOME

**to the
9th Annual
MAPFEST!**

MAPFEST began nine years ago as one of the first fundraisers to meet the challenges of a "new" epidemic called AIDS. The volunteers who produce this event, many of whom are still with the Milwaukee AIDS Project and AIDS Resource Center of Wisconsin, Inc. today, became known as the Fundraising Committee. Since 1985, more volunteers have joined in the production efforts of MAPFEST. The gratitude we have for these volunteers is hard to express.

MAPFEST is unique. This Gay and Lesbian event shall always honor the colorful and diverse community which has given so selflessly and generously throughout the years. Today we celebrate with pride and help those in need.

This year's MAPFEST goal is to raise at least \$48,000. Funds raised today will be used to provide high quality prevention programs as well as to provide services to more than 1,000 men, women and children living with HIV disease. Services include legal assistance, case management, housing and rent assistance, art therapy, Positive Approaches To Health, support groups, a food pantry and much more. Your contributions today will also provide people with HIV disease in Wisconsin with greater access to vital clinical drug trials.

The Milwaukee AIDS Project, Southeast Wisconsin AIDS Project-Kenosha, Northwest Wisconsin AIDS Project-Eau Claire and Wisconsin Community-Based Research Consortium (WCRC) are service agencies of the AIDS Resource Center of Wisconsin, Inc.

We would like to express our deep appreciation to the Gay and Lesbian community for your loyal support throughout the years. Celebrate with compassion and dignity! Enjoy!

Ronnie Marks ■ MAPFEST Co-Chair
Gary Steen ■ MAPFEST Co-Chair

Beth D'Amato ■ Marketplace Co-Chair
John Goff ■ Outreach Co-Chair
Tiffany Herrera ■ Entertainment Co-Chair
Jeff Howe ■ Communications Chair
Dan Larson ■ Games Co-Chair
Bea McGee
Jim Moore ■ Food Chair
Lauren Mott-Smith
Tim O'Brien ■ Dance Co-Chair
Lowell Peterson ■ Outreach Co-Chair
Church "Richard Rolbiecki" ■ Entertainment Co-Chair
Greg Shirley ■ Decorations/Signs/Marketplace Co-Chair
Brian Swales ■ Dance Co-Chair
Tom Wayer ■ Volunteer Chair
Jerry Whiz ■ Games Co-Chair

SCHEDULE OF EVENTS

Music, music, music...laughs, laughs, laughs!
Don't miss the myriad of fun and entertainment!

At 7:30 p.m., SUEDE and
THE FLIRTATIONS perform
a special MAPFEST concert
in Vogel Hall! General
admission is \$15 per
person! Don't miss it!

CONCERT
TICKETS
AVAILABLE AT
THE MAIN
INFORMATION
TENT!

PECK PAVILION

- 1:45 P.M. ■ Rufus and the Gospel Singers
- 2:45 P.M. ■ Shoreline Dancers
- 3:00 P.M. ■ Dog Show with Host
- 4:00 P.M. ■ Fest City Singers
- 4:30 P.M. ■ Shoreline Dancers
- 5:00 P.M. ■ Regional Contest 1
- 6:00 P.M. ■ Regional Contest 2
- 7:00 P.M. ■ Regional Contest 3
- 8:00 P.M. ■ Baby Jane Hudson
- 9:00 P.M. ■ "I'm the Queen, Goddamit" Revue
A Tribute to Miss M
- 10:00 P.M. ■ Closing Ceremonies



is, once again,
Proud to be a
Principal Sponsor
of MAPFEST

WE'RE HERE,

WE'RE QUEER,

WE DO IT EVERY YEAR!

IN STEP MAGAZINE

225 South 2nd Street • Milwaukee, WI 53204

Voice: 414/278-7840 • Fax: 414/278-5868

**A VERY SPECIAL
EXPRESSION OF
APPRECIATION...**

1994 MAPFEST SPONSORS

PRINCIPAL SPONSORS

Bottom Line Travel
In Step Magazine
M & M Club/Glass Menagerie
Miller Brewing Company
This Is It!
The Wisconsin Light

MAJOR SPONSORS

AfterWords Bookstore & Espresso Bar
Cream City Foundation
Sinai Samaritan Medical Center Medical Specialities Clinic
Stein Garden & Gifts

SPONSORS

Stein Medical/Home Health

CONTRIBUTORS

Abyss Body Works—Tarot Readings
AIDS Activist TV on 3rd Wednesday/Channel 47
Alternative Connections, Inc.
Constant Reader Bookshop
Fest City Singers
Holiday Invitational Tournament
Attorney Thomas E. Martin

IN-KIND CONTRIBUTORS

- AfterWords Bookstore & Espresso Bar
- Artesian Water Co.
- Aurora Health Care
- B & C Enterprises
- Bayshore Mall
- Beer Capitol Distributing, Inc.
- Behlendorf Floral Shop
- Horizon Graphics
- In Step Magazine
- Shelby Keefe
- Kraft Food Service
- LAMM
- Lesbian Alliance of Metro Milwaukee Education Fund, Inc.
- Sandy Lewis
- Midnight Graphics
- Miller Brewing Company
- Outpost Natural Foods Co-op
- PAC Box Office
- PAC Food Service
- People's Books
- Performing Arts Center
- Professional Marketing Services
- Quality Color Graphics
- St. Helen's Parish
- Stein Garden & Gifts
- Streff Advertising, Inc.
- Third Street Pier
- 3B's
- Triangle
- Garth Wagmann
- Wagner's in Bay View
- Walkers Point Arcade
- Wisconsin Bingo Supply & Equipment Co., Inc.
- The Wisconsin Light
- Z Ticket Company
- The Boelter Companies
- Boomerang
- Boot Camp
- Bottom Line Travel
- Broadway Papers
- Caprile Marketing/Design
- Chanticleer Guest House
- Coca-Cola Company
- Colders Furniture Appliance & Electronics
- Curry Copy Center
- Czar's Cafe
- DKC's Armadillo Grill
- Downtown Ryder Truck Rental
- Edelweiss
- The 1100 Club
- Fannie's
- Gil's Espresso Bongo Lounge
- Karen Gotzler
- Great Lakes Security
- Greater Milwaukee Maritime Association
- Holiday Invitational Tournament
- Holiday Inn—City Centre

**and the many, many entertainers and volunteers
who made this event possible...**

**SHOPPING
GALORE!**

MAPFEST's Marketplace

Jewelry, artwork, t-shirts and more!

RETAIL BOOTHS

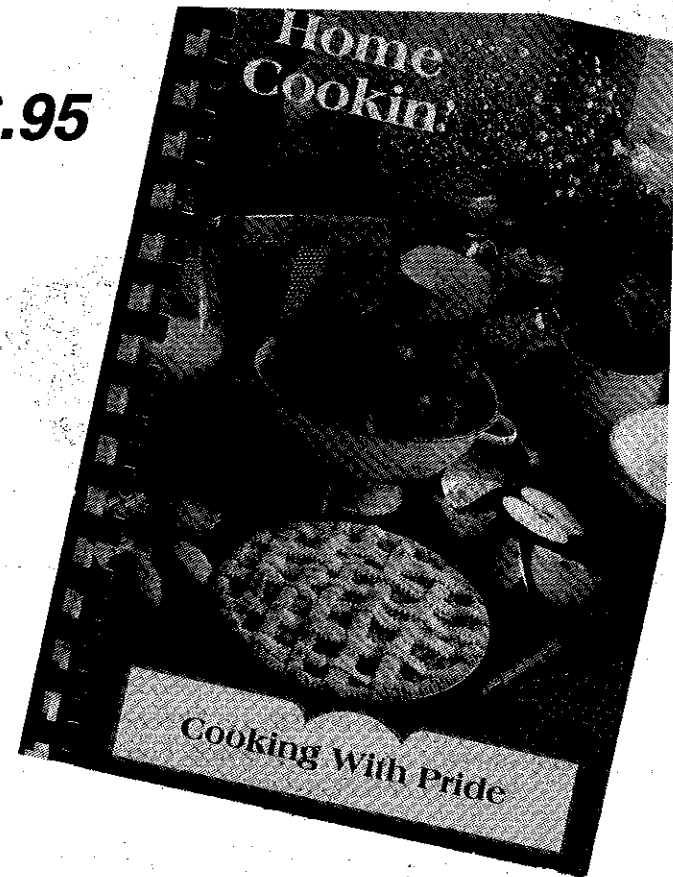
Abyss Body Works-Tarot Readings ■ ACT UP Milwaukee
Afterwords Bookstore & Espresso Bar ■ ARTVARKS
Artwerks ■ Basel Pottery
Bob's Custom Leather ■ Ear-things, Etc.
Gaia Traditions ■ Greater Milwaukee Maritime Association
Mary Hood ■ Jay's Design
Douglas Krimmer ■ Maggie's Mesa
Milwaukee Indian Health Board, Inc.
Milwaukee-National Organization for Women
Milwaukee Video Postcard ■ PrideFest
Toni A. Seebantz ■ The Three Fates
Tie Me Down ■ Timothies Interior Design
Viktor-Victoria ■ We're Everywhere

INFORMATION BOOTHS

AIDS Resource Center of Wisconsin, Inc./AIDS Walk Wisconsin
The Back Door, BBS ■ Bottom Line Travel
Commitment '94 ■ The Counseling Center
Cream City Foundation ■ Human Rights Campaign Fund
Human Rights League ■ Log Cabin Club of Wisconsin
Medical College of Wisconsin Center for AIDS Intervention
Milwaukee Metropolitan Community Church ■ Milwaukee GAMMA
Milwaukee Indian Health Board, Inc. ■ Milwaukee Women's Center, Inc.
Mobilization for Survival ■ Planned Parenthood of Wisconsin, Inc.
UWM Union Theatre ■ Waddell & Reed
Waukesha County Council on Alcoholism & Other Drug Abuse
Wisconsin AIDS Fund ■ Wisconsin Cream City Chorus

"Cooking With Pride" The Cookbook with 400 Recipes

\$6.95



A VERY SPECIAL BENEFIT FOR THE MILWAUKEE AIDS PROJECT

**\$2.00 from each cookbook sold at MAPFEST
will go to MAP Client Services**

Sponsored by the Wisconsin Light



**NEW
THIS
YEAR!**

DANCE, DANCE, DANCE! DANCE TENT

1:00—10:00 p.m.

MAPFEST'S newest attraction
will be rocking with your favorite dance tunes.
Don't miss it!

THE LUCK OF THE DRAW

**Drawing at 8:30 p.m.
on Peck Pavilion Stage**



**TEST
THE
ODDS!**

Feeling especially lucky?
Take your chance on the MAPFEST Raffle, offering a variety of surprises—
all worth emptying your wallet for.
This year's selection includes:

- Round-trip tickets for two to Florida
(St. Petersburg/Tampa, Orlando, Fort Myers, Fort Lauderdale)
courtesy of Bottom Line Travel
- Moonlight cruise for two aboard the *Edelweiss*
- One night stay for two at the Chanticleer Guest House in Sturgeon Bay
- Bookshelf Stereo System
courtesy of Colder's Furniture Appliances and Electronics

**In addition,
baskets of wine and liquor
will be raffled off throughout the festival
by our favorite basket lady.**



**NEW
THIS
YEAR!**

A COLORFUL TRIBUTE

7:00 p.m. ■ Riverfront

Dedicate a balloon in the name of a loved one.
Join us at 7 p.m. when the balloons will be released in a colorful tribute
to our family members and loved ones.
Balloons will be on sale throughout the day.

MAPFEST DOG SHOW

3:00 p.m. ■ Peck Pavilion



**IS FIFI
CHI-CHI
IN PINK
TULLE?**

The hilarious MAPFEST Dog Show
stages another popular return,
featuring the best in canine fashion and poise.
Dogs vie for many coveted titles including Butchest, Nelliest, Dog/Owner
Look-A-Like, Most Likely to Date a Pit Bull and Daintiest Pedicure.
Think your dog has what it takes?
REGISTER AT MAPFEST.



**PRIZES
GALORE!**

GAME ARCADE

This year's game arcade can't be missed.
Many old favorites will be featured as well as some new
attractions, giving you the opportunity to win great prizes.
The Bulldozer, Over & Under, the Money Table and Dart Poker
are some of the 20 games that will test your skills.

SPECIAL CONCERT PERFORMANCE

SUEDE ■ THE FLIRTATIONS

7:30 p.m. ■ Performing Arts Center Vogel Hall

TICKETS AVAILABLE AT THE MAPFEST MAIN INFORMATION TENT

Performances by Suede and The Flirtations will culminate a day full of games, laughs and super entertainment.

Sponsored by the Lesbian Alliance of Metro Milwaukee Education Fund, Inc., In Step Magazine and The Wisconsin Light.

SUEDE

"She is the bright spot where the crowd gathers."
—Maryland Musician Magazine



SUEDE

If you saw Suede sing "Sister" at the 1993 March on Washington, you know why that performance was heralded as one of the best of the day.

"This is a fireball performer. Voices like hers come along maybe once in a generation."
—New York Post

Among the most sought-after entertainers of her kind, Suede has performed at Bill Clinton's Inaugural Ball, was featured on ABC's 20/20 and has received numerous awards, including New York's prestigious Bistro Award.

Suede's music is an intriguing blend of popular, jazz and blues styles. She is an accomplished self-taught musician and writer on piano, guitar and trumpet, yet it is Suede's vocals that are truly extraordinary.

"Suede brought the press to its feet, not a mean feat."
—Private Lives Magazine

"...a spectacular evening of song and style...in the front ranks of the next generation of jazz greats."
—Michael's Thing Weekly, NYC

THE FLIRTATIONS

THE FLIRTATIONS, as seen in the movie "Philadelphia," are back at MAPFEST by popular demand as the world's first and only politically active, multicultural, all-gay a cappella vocal quartet.



"Glorious voices and grand social consciousness."
—New York Press

"Oh spare me, these guys are almost too good!"
—Bay Area Reporter

THE FLIRTATIONS

Since 1988, the Flirtations have been thrilling audiences across the continent with their unique blend of politics, musical artistry and humor. Their glorious voices, on-stage honesty and their equal commitment to social change leaves audiences begging for more.

"The boys in this band sing out proud."
—New York Daily News

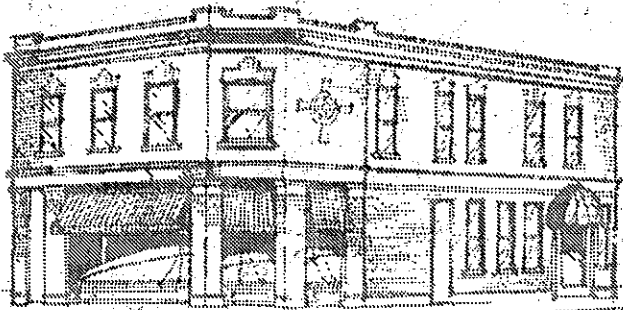
"The Flirtations cause a sensation wherever they perform."
—Gay Community News, Boston



M&M CLUB

- Lunch & Dinner Daily
- Sunday Brunch
- Party Room Available
- Cocktail Hour

CABARET ENTERTAINMENT
MAJOR CREDIT CARDS ACCEPTED



124 North Water Street, Milwaukee 414.347.1962



Abyss Body Works—Tarot Readings
(414) 332-8836

**AIDS Activist TV on 3rd Wednesday/
Channel 47**
(414) 291-2848

Alternative Connections, Inc.
(414) 765-1233

Constant Reader Bookshop
(414) 291-0452

Holiday Invitational Tournament
(414) 871-4735 • (414) 672-8960

Attorney Thomas E. Martin
(414) 765-9413

Bottom Line *Travel*

3468 S. 13th Street ▾ Milwaukee, WI 53215

**DO NOT LET THE CHILL
OF WINTER GET YOU BLUE
LET US HELP YOU . . .**

→ Get Away → Get Away → Get Away →

Stop By Our Booth

- ~ Watch a Video ~
- ~ Pick Up a Calendar of Events ~
- ~ Bring Your Questions ~
- ~ Free Balloons for All Kids ~

Congratulations
MAPFEST

Traveling on Business?
Let Us Serve Your Corporate
Travel Needs

383-1244 or 800 933-8330

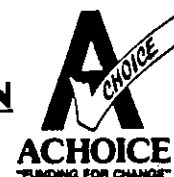
As one of the original funding sources,
the
Cream City Foundation
is proud to once again be a sponsor of

MAPfest '94

Sunday, September 4



CREAM CITY FOUNDATION
Milwaukee Enterprise Center • 2821 North 4th Street
Milwaukee, WI 53212 • Phone: (414)265-0880



AfterWords

AfterWords Bookstore & Espresso Bar

is pleased to participate in the

Ninth Annual MAPfest

Sunday, September 4, 1994

While at MAPfest, stop at our booth for a large variety of AIDS-related literature, periodicals, red ribbon pins and related items in addition to our usual large selection of T-Shirts, Music CDs & Cassettes, jewelry, books, magazines and much, much more!

**AfterWords 2710 N. Murray Ave.
Milwaukee, WI 53211 (414) 963-9089**

JEWELRY • CLOTHING • SMALL APPLIANCES • FURNITURE • TOYS • GAMES • ARTWORK • BEDS

• IRONS • TOASTERS • BLENDERS • BRIC-ABRAC • TABLES •

WE NEED YOU!

• RECORDS • TOOLS • FURNITURE • SILVERWARE • DISHES • POTS AND

VOLUNTEERS are needed immediately for start-up
of the AIDS Resource Center of Wisconsin, Inc.
RESALE SHOP.

DONATIONS of items are also being accepted NOW!

Questions? Stop at the ARCW Booth or call
(414) 273-1991, EXT. 275

PANS • BLANKETS • CAMERAS • TVs • RADIOS • RUGS • SOFAS • DRESSERS • TABLES • CHAIRS

**AIDS RESOURCE CENTER
OF WISCONSIN, INC.
HOLIDAY GREETING CARDS
ARE NOW ON SALE!**

PLEASE SEE THE
ARCW BOOTH
FOR ORDER FORMS
AND MORE INFORMATION...

Bayshore presents the
1994
JEAN JACKET AUCTION
to benefit the
Milwaukee AIDS Project
November 12th 7pm

Fifty jean jackets
"creatively modified" by local
artists & notables will be
auctioned during this gala
evening of entertainment
featuring
cocktails, hors d'oeuvres,
music and fashion show

Jackets donated by GAP
For additional information 332-8136



**FEST CITY
SINGERS
MILWAUKEE
263-SING**

JOIN US !

**Fest City Christmas
DEC 11 - 7:30 PM
South Shore Pavillion**



Sinai Samaritan Medical Center

MEDICAL SPECIALITIES CLINIC

Coordinated, collaborative, quality care

- Outpatient, multidisciplinary HIV care
- Coordination with inpatient and home care services
 - Convenient downtown location
- Care partners with community health centers

Gary Hollander, PhD, Program Manager

Kathie Adler, RN • Clinic Coordinator

Carmen Anderson • Clinic Clerk

José Avila, RN • Nurse Clinician

Kelly Balliet, MD • Physician

Joni Hodor, RD, NS • Nutritionist

Marty McCann, MSSW • Medical Social Worker

Marchelle Odom • Medical Assistant

(414) 283-7837

Stein

MEDICAL / HOME HEALTH

"The first name in Wisconsin Health Care."

- ▶ Skilled Nursing
- ▶ Home Health Aide Services
- ▶ In-home Physical, Occupational and Speech Therapy
- ▶ Respiratory and Infusion Therapies
- ▶ Durable Medical Equipment
- ▶ Billing for Medicare, Medicaid, Title 19 and most private insurance companies
- ▶ Free delivery and 24 hour emergency service



3724 West Wisconsin Avenue
(414) 342-7755 • (800) 472-2256

Proud Sponsor of MAPFEST



ARMADILLO GRILL

A FUN PLACE TO EAT

"The Best Fajitas In Town"

*Willard Romantini - Milwaukee Magazine - July 1993

"Best Margaritas"

*Kate Bast - Milwaukee Magazine - August 1993

1285 N. VAN BUREN • 291-9833 • TUES - SAT. 4:00 - CLOSE



MILWAUKEE

NOVEMBER 24 - 27, 1994

ENTRIES CLOSE NOVEMBER 8, 1994

TOURNAMENT CONTACTS:

BOB DOORNEK
(608) 831-4038

CINDY OLSHESKE
(414) 328-3636



SERVING WISCONSIN WITH PRIDE

The AIDS Resource Center of Wisconsin, Inc., borne from the commitment of the Gay and Lesbian community, continues a dedication to providing the highest quality in AIDS and HIV support and prevention.

ARCW strives to meet the diverse needs of the Gay and Lesbian community through:

- ▼ Comprehensive case management and support services for men and women with HIV disease
 - ▼ HIV prevention education
 - ▼ Clinical research on HIV therapies
 - ▼ Volunteer opportunities
- ▼ Strong public policy advocacy on HIV issues

Milwaukee AIDS Project
Southeast Wisconsin AIDS Project—Kenosha
Northwest Wisconsin AIDS Project—Eau Claire
Wisconsin Community-Based Research Consortium

Service agencies of the
**AIDS RESOURCE CENTER
OF WISCONSIN, INC.**

P.O. BOX 92487 ▼ MILWAUKEE, WI 53202-0487
(414) 273-1991 ▼ (800) 359-9272

For good advice on AIDS, call the Wisconsin AIDSline (414) 273-1991 ▼ (800) 359-9272

SAVE THE DATE

AIDS WALK WISCONSIN

SEPTEMBER 18, 1994

A TEN KILOMETER FUNDRAISING WALK

ALONG MILWAUKEE'S LAKEFRONT • STARTING AT SUMMERFEST

BENEFITING:

- Milwaukee AIDS Project • Madison AIDS Support Network
 - Center Project, Inc.-Green Bay • Southeast Wisconsin AIDS Project-Kenosha
 - Northwest Wisconsin AIDS Project-Eau Claire • Wisconsin Community-Based Research Consortium
- AND 14 OTHER AIDS SERVICE ORGANIZATIONS THROUGHOUT WISCONSIN

TO REGISTER CALL

1-800-348-WALK

Produced by the AIDS Resource Center of Wisconsin, Inc.



Aurora
HealthCare



MILLER BREWING COMPANY

THE
RATH
FOUNDATION, INC.



STEIN
MEDICAL/HOVE HEALTH



**Good beer keeps its head.
You should too.**



Know your limit. Think when you drink *Miller*.